



TRILOBITE TESTING, INC

DRILL STEM TEST REPORT

Berexco, LLC

9/1s/37w Cheyenne KS

2020 N. Bramblewood
Wichita, KS 67206

Mears 'A' #4-9

Job Ticket: 56977

DST#: 4

ATTN: Bryan Bynog

Test Start: 2014.03.19 @ 10:13:00

GENERAL INFORMATION:

Formation: **Pawnee**

Deviated: No Whipstock: ft (KB)

Time Tool Opened: 13:22:00

Time Test Ended: 21:35:30

Test Type: Conventional Bottom Hole (Reset)

Tester: James Winder/ Brando

Unit No: 57

Interval: 4476.00 ft (KB) To 4520.00 ft (KB) (TVD)

Reference Elevations: 3153.00 ft (KB)

Total Depth: 4520.00 ft (KB) (TVD)

3142.00 ft (CF)

Hole Diameter: 7.88 inches Hole Condition: Fair

KB to GR/CF: 11.00 ft

Serial #: 8671 Inside

Press@RunDepth: 29.62 psig @ 4477.00 ft (KB)

Capacity: 8000.00 psig

Start Date: 2014.03.19

End Date:

2014.03.19

Last Calib.:

2014.03.19

Start Time: 10:13:05

End Time:

21:35:30

Time On Btm:

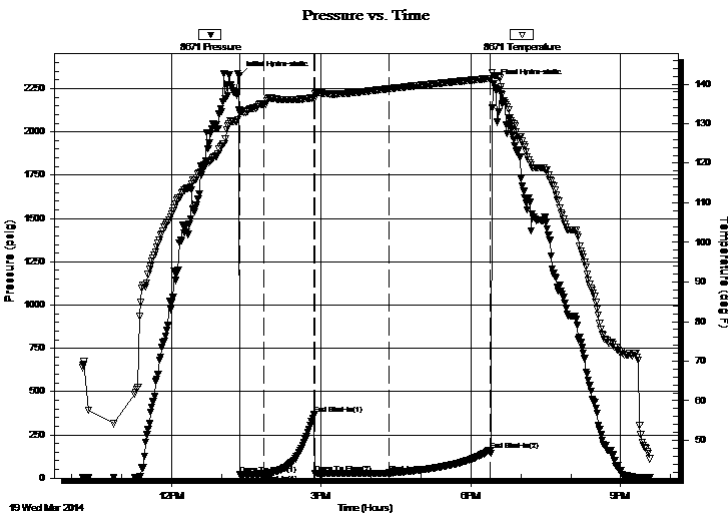
2014.03.19 @ 13:21:30

Time Off Btm:

2014.03.19 @ 18:27:15

TEST COMMENT: 30 - IF: Blow built to 1/4", died back to 1/8" at close
60 - ISI: No blow back
90 - FF: No blow
120 - FSI: No blow back

PRESSURE SUMMARY



Time (Min.)	Pressure (psig)	Temp (deg F)	Annotation
0	2324.84	133.51	Initial Hydro-static
1	19.59	132.67	Open To Flow (1)
30	24.29	134.97	Shut-In(1)
90	370.66	136.56	End Shut-In(1)
91	26.17	136.36	Open To Flow (2)
180	29.62	138.81	Shut-In(2)
301	161.33	141.41	End Shut-In(2)
306	2280.60	142.21	Final Hydro-static

Recovery

Length (ft)	Description	Volume (bbl)
20.00	SOCM 98% m, 2% o	0.10
1.00	Free Oil 100% o	0.00

Gas Rates

Choke (inches)	Pressure (psig)	Gas Rate (Mcf/d)

* Recovery from multiple tests



**TRILOBITE
TESTING, INC**

DRILL STEM TEST REPORT

FLUID SUMMARY

Berexco, LLC

9/1s/37w Cheyenne KS

2020 N. Bramblewood
Wichita, KS 67206

Mears 'A' #4-9

Job Ticket: 56977

DST#: 4

ATTN: Bryan Bynog

Test Start: 2014.03.19 @ 10:13:00

Mud and Cushion Information

Mud Type: Gel Chem

Cushion Type:

Oil API:

deg API

Mud Weight: 10.00 lb/gal

Cushion Length:

ft

Water Salinity:

ppm

Viscosity: 51.00 sec/qt

Cushion Volume:

bbbl

Water Loss: 6.40 in³

Gas Cushion Type:

Resistivity: ohm.m

Gas Cushion Pressure:

psig

Salinity: 1300.00 ppm

Filter Cake: 2.00 inches

Recovery Information

Recovery Table

Length ft	Description	Volume bbl
20.00	SOCM 98% _m , 2% _o	0.098
1.00	Free Oil 100% _o	0.005

Total Length: 21.00 ft Total Volume: 0.103 bbl

Num Fluid Samples: 0

Num Gas Bombs: 0

Serial #:

Laboratory Name:

Laboratory Location:

Recovery Comments:

Pressure vs. Time

