

# LITHOLOGY STRIP LOG

## WellSight Systems

Scale 1:240 (5"=100') Imperial  
Measured Depth Log

Well Name: MEARS A 4-9  
Location: NWNE 9 1S-37W CHEYENNE COUNTY, KANSAS  
License Number: 15-023-21371  
Spud Date: 3-11-2014  
Surface Coordinates: 330' FNL & 1175' FWL  
Region: MIDCONTINENT  
Drilling Completed: 3-20-2014

Bottom Hole Coordinates: 3142  
Ground Elevation (ft): 3142  
Logged Interval (ft): 3000 To: 4700  
Formation: LKC, PAWNEE  
Type of Drilling Fluid: CHEMICAL GEL  
K.B. Elevation (ft): 3153  
Total Depth (ft): 4620  
Printed by WellSight Log Viewer from WellSight Systems 1-800-447-1534 www.WellSight.com

### OPERATOR

Company: BEREXCO, LLC.  
Address: 2020 N. BRAMBLEWOOD  
WICHITA, KS. 67206

### GEOLOGIST

Name: WILLIAM B. BYNOG  
Company: P.O.BOX 687  
Address: PINECLIFFE, CO. 80471

### SURVEY'S




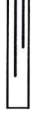




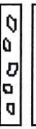



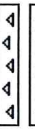


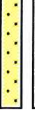




DEPTH	ANGLE
314'	3/4
3600'	1 1/4

### DSTs

DST#1 3975-4030', DST#2 4112-4240', DST#3 4225-4320', DST#4 4476-4520'

### Comments

RAN 5 1/2 PRODUCTION PIPE  
E LOG TOTAL DEPTH WAS 15 FEET DEEPER THAN MUD LOG, SLIDE MUD LOG 10-15 FEET DOWN HOLE TO FIT E LOG DEPTHS

ROCK TYPES			
 Anhy	 Coal	 Lmst	 Shcol
 Bent	 Congl	 Meta	 Shgy
 Brec	 Dol	 Mrlst	 Sltst
 Cht	 Gyp	 Salt	 Ss
 Clyst	 Igne	 Shale	 Till

**ACCESSORIES**

- Gyp
  - Ls
  - Mrst
  - Sltstrg
  - Ssstrg
- TEXTURE**
- Boundst
  - Chalky
  - Cryxln
  - Earthy
  - Finexln
  - Grainst
  - Lithogr
  - Microxln
  - Mudst
  - Packst
  - Wackest

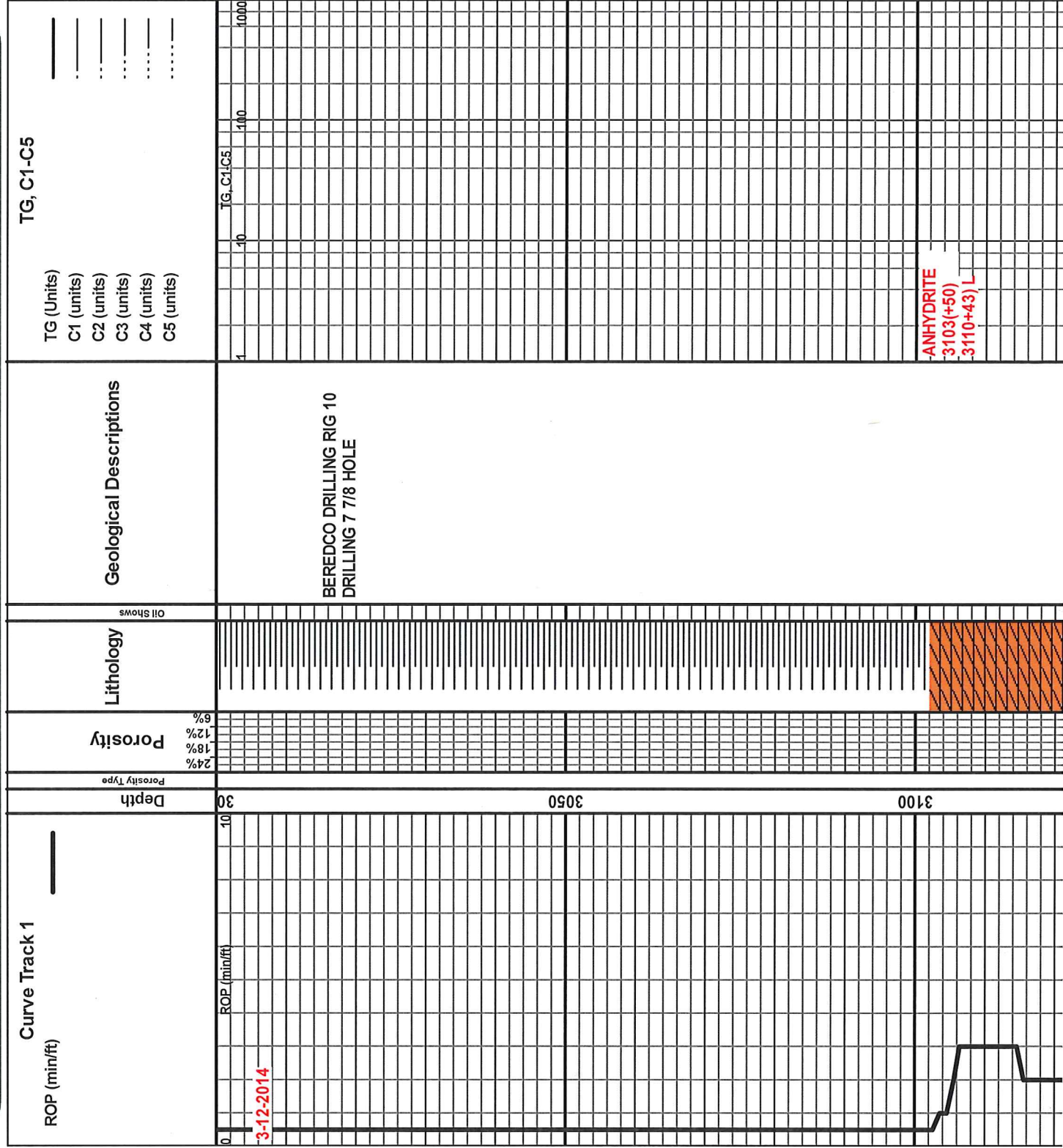
- Crin
  - Echin
  - Fish
  - Foram
  - Fossil
  - Gastro
  - Oolite
  - Ostra
  - Pelec
  - Pellet
  - Pisolite
  - Plant
  - Strom
- STRINGER**
- Anhy
  - Arg
  - Bent
  - Coal
  - Dol

- Minxl
  - Nodule
  - Phos
  - Pyr
  - Salt
  - Sandy
  - Silt
  - Sil
  - Sulphur
  - Tuff
- FOSSIL**
- Algae
  - Amph
  - Belm
  - Bioclist
  - Brach
  - Bryozoa
  - Cephal
  - Coral

- MINERAL**
- Anhy
  - Arggrn
  - Arg
  - Bent
  - Bit
  - Brecfrag
  - Calc
  - Carb
  - Chtdk
  - Chtit
  - Dol
  - Feldspar
  - Ferrpel
  - Ferr
  - Glau
  - Gyp
  - Hvymn
  - Kaol
  - Marl

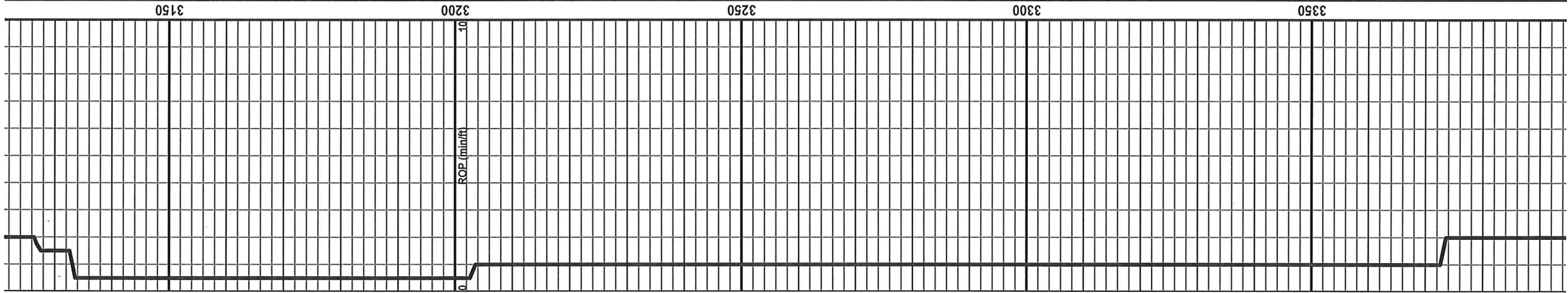
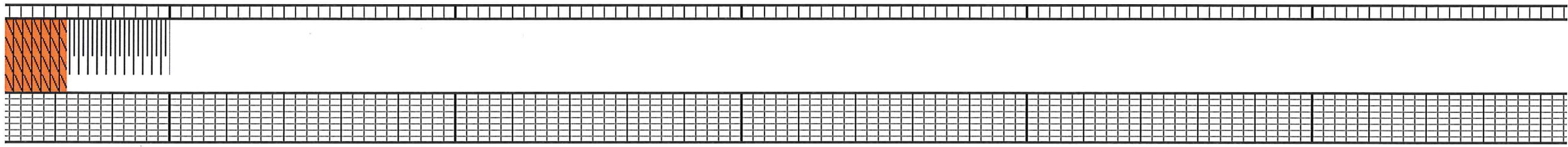
**OTHER SYMBOLS**

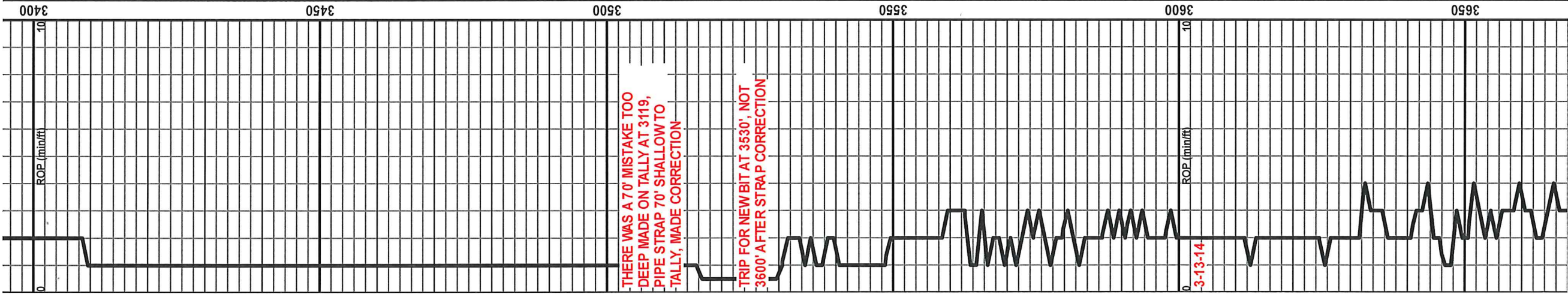
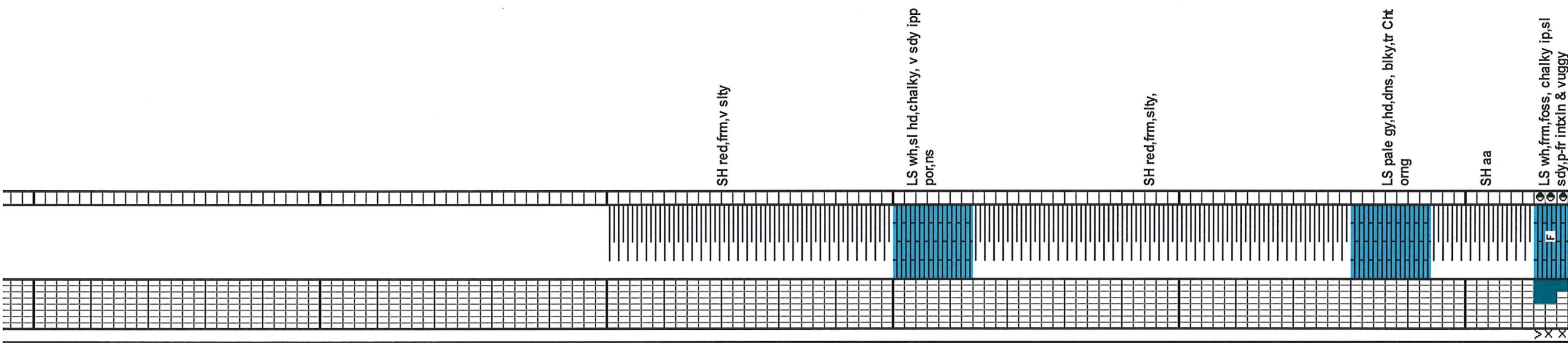
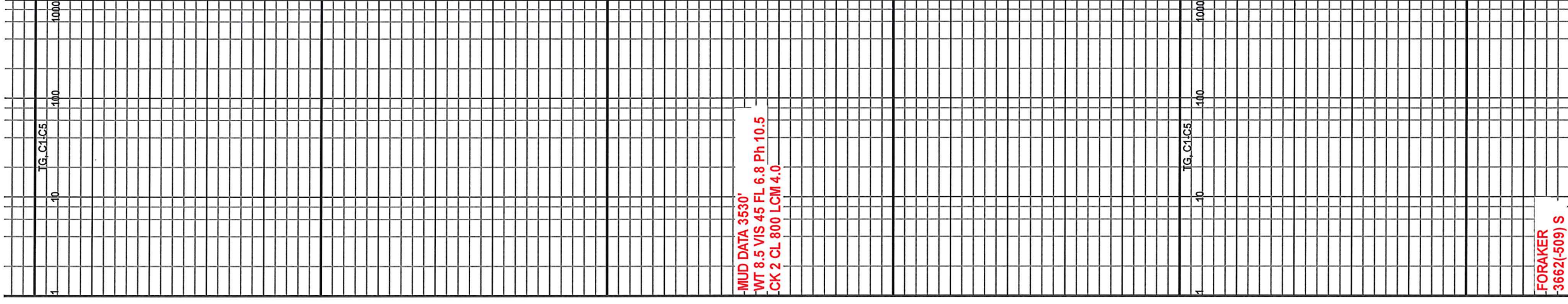
- POROSITY**
- Earthy
  - Fenest
  - Fracture
  - Inter
  - Moldic
  - Organic
  - Pinpoint
  - Vuggy
- SORTING**
- Well
  - Moderate
  - Poor
- ROUNDING**
- Rounded
  - Subrnd
  - Subang
- INTERVAL**
- Dst
  - Dst
- EVENT**
- Rft
  - Sidewall

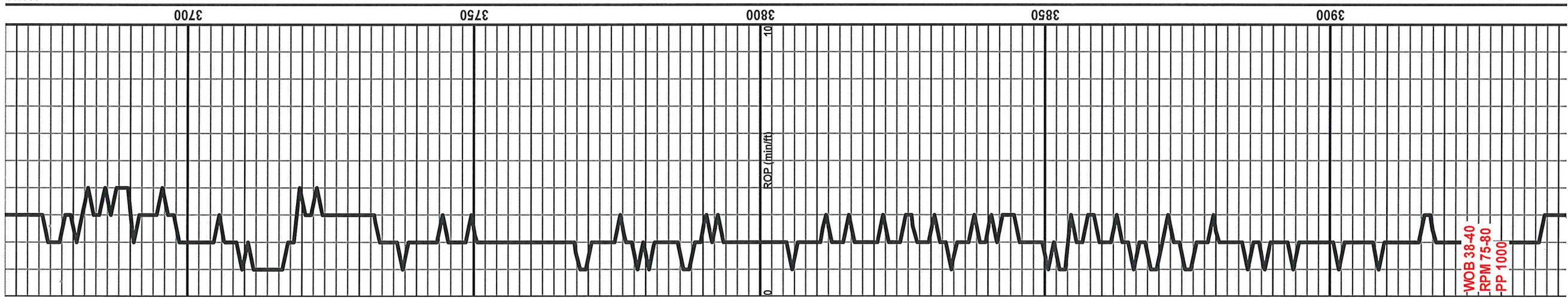
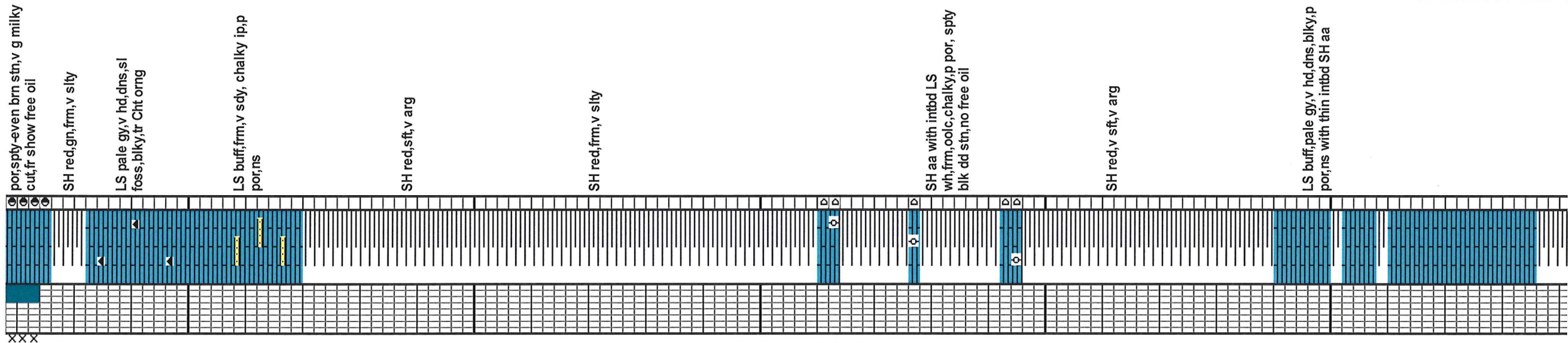
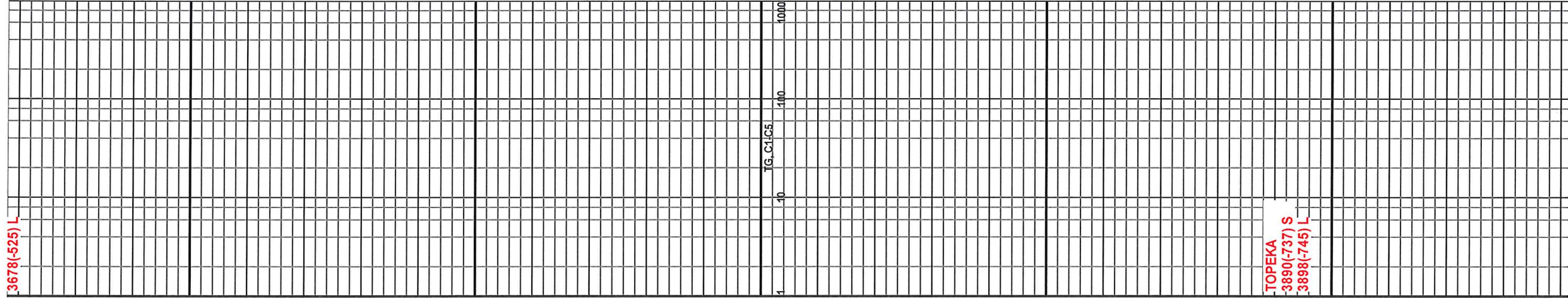


BASE TOP (CORRECTED TO S TRAP)  
3133(+20) S, MISTAKE AT 3119'  
3144(+9) L

TG, C1, C5  
1000  
100  
10  
1

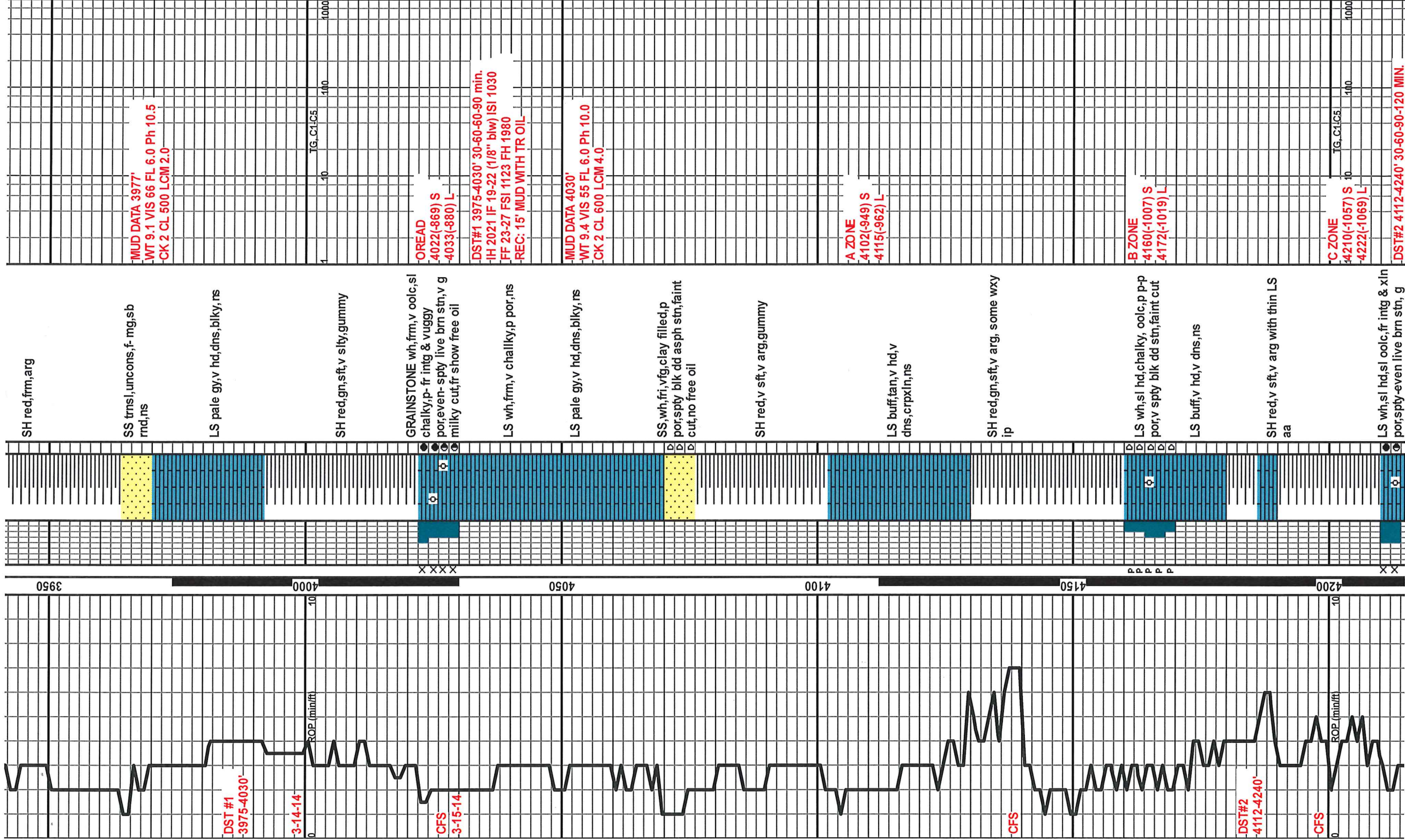






3678(-525) L

TOPEKA  
3890(-737) S  
3898(-745) L



IH 2130 IF 24-51 (2 3/4 blw) ISI 678  
 FSI 58-112 (3 1/2"blw) FSI 657  
 FH 1978  
 REC: 185' TOTAL FLUID  
 5' CLEAN OIL, 15' OILY MUD(2%G,48  
 % O & 50% M), 105' OCM (2%G, 14%  
 O & 87%M) & 60' O & WCM (3%G,5%  
 O, 14% W & 78%M)  
 MUD DATA 4240'  
 WT 9.5 VIS 68 FL 6.8 Ph 9.5  
 CK 2 CL 700 LCM 4.0

D ZONE  
 4254(-1101) S  
 4274(-1121) L

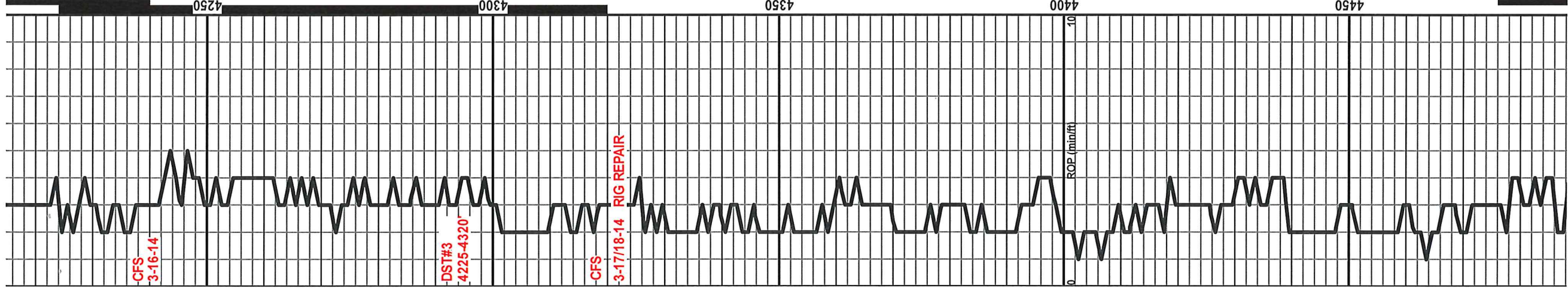
E ZONE  
 4301(-1148) S  
 4310(-1157) L

DST#3 4225-4320' 30-60-90-120 min.  
 IH 2226 IF 186-516 (bob in 1 3/4 min. )  
 ISI 835 (bob bb in 14 1/4 min.) FF  
 536-794 (bob in 2 3/4 min)  
 FSI 842 (bob in 16 min.GTS in 50  
 min.) FH 2167  
 REC: 1855' TOTAL FLUID  
 1735' MCO & 120' WATER (1%O,92% W  
 & 7%M)  
 MUD DATA 4320'  
 WT 9.9 VIS 48 FL 7.6 Ph 10.0  
 CK 2 4 CL 800 LCM 4.0

F ZONE  
 4344(-1191) S  
 4360(-1207) L

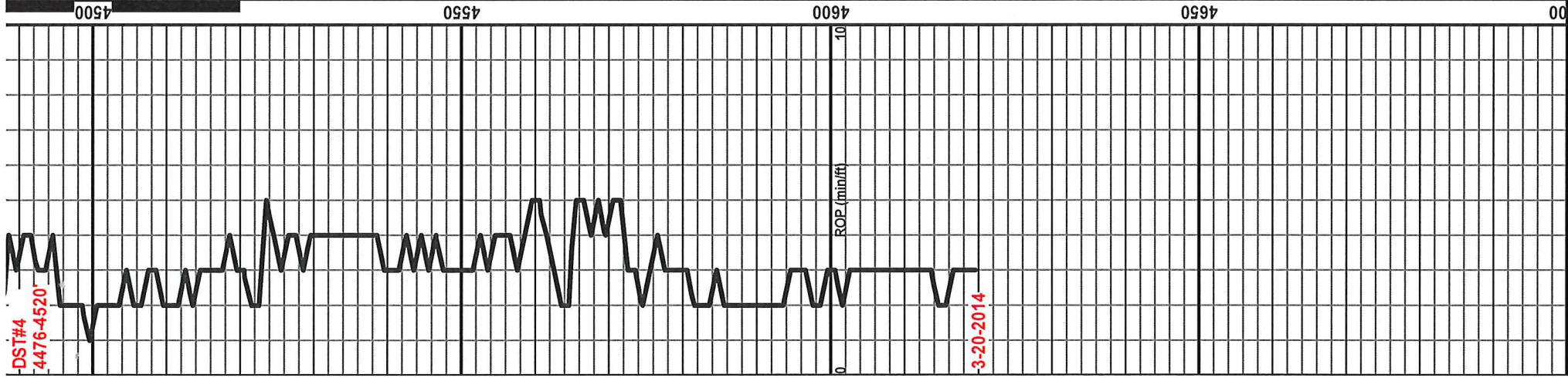
1 10 100 1000  
 TG, C1,C5

milky cut,p show free oil  
 LS buff,v hd,dns, blk,y,ns  
 SH aa  
 LS buff,pale gy,hd,sl foss,p  
 intxn por,v spty brn live stn,p  
 cut,no free oil  
 SH red,sft,v arg  
 LS wh,frm,micxln, oolc,fr,xln  
 & moldic por, spty-even live  
 brn stn,v g milky cut,fr show  
 free oil  
 LS buff,hd,dns,sl chalky,ns  
 SH red,frm,v slty,sdy ip  
 LS wh,frm,foss, gran,p por,ns  
 SH red,frm,slty with thin LS aa  
 LS buff,v hd,blk,y, dns,ns  
 SH aa some gy gn,frm,arg,wxy  
 ip  
 LS pale gy,buff,hd, sl  
 foss,dns,chalky ip,ns  
 SH aa

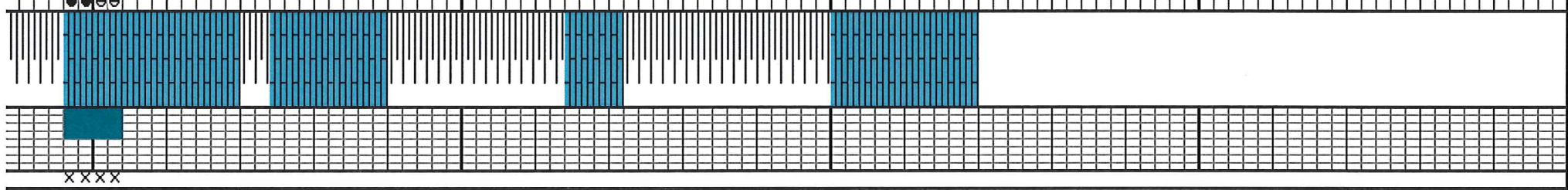


DST#4  
4476-4520'

3-20-2014



4500 4550 4600 4650 00



GRAINSTONE wh, frm, v oolc, cin, fr intg por, sply-even live brn stm, v g milky cut, fr show free oil

LS pale gy, v hd, dns, blk, ns with thin SH aa

SH gn, gy, frm, wxy

LS buff, v hd, dns, blk, chalky ip, ns

SH aa some red, frm, arg

LS buff, hd, foss, chalky ip, p por, ns

RTD 4620'  
LTD 4635'

PAWNEE  
4496(-1343) S  
4506(-1353) L

DST#4 4476-4520' 30-60-90-120 min.  
IH 2325 IF 20-24 (1/4" blw) ISI 371  
FF 26-30 FSI 161 FH 2281  
REC: 1' CO & 20' OCM (2%O)

1 10 100 1000

TG, C1, C5