



## DRILL STEM TEST REPORT

Prepared For: **Prospect Oil & Gas Corp**

P O Box 837  
Russell KS 67665

ATTN: Brad Hutchison

**28-14-15 Russell,KS**

**Leas-Ball #1**

Start Date: 2010.10.29 @ 01:21:27

End Date: 2010.10.29 @ 07:04:21

Job Ticket #: 40870                      DST #: 1

Trilobite Testing, Inc  
PO Box 362 Hays, KS 67601  
ph: 785-625-4778 fax: 785-625-5620

Printed: 2014.06.17 @ 10:00:54



**TRILOBITE TESTING, INC**

# DRILL STEM TEST REPORT

Prospect Oil & Gas Corp  
 P O Box 837  
 Russell KS 67665  
 ATTN: Brad Hutchison

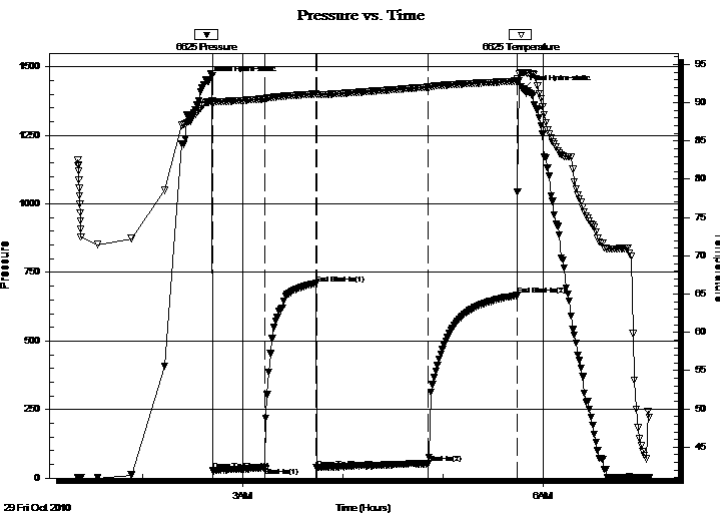
**Leas-Ball #1**  
**28-14-15 Russell,KS**  
 Job Ticket: 40870 **DST#: 1**  
 Test Start: 2010.10.29 @ 01:21:27

## GENERAL INFORMATION:

Formation: **LKC A-B**  
 Deviated: No Whipstock: ft (KB)  
 Time Tool Opened: 02:42:22  
 Time Test Ended: 07:04:21  
 Interval: **3015.00 ft (KB) To 3090.00 ft (KB) (TVD)**  
 Total Depth: 3090.00 ft (KB) (TVD)  
 Hole Diameter: 7.88 inches Hole Condition: Fair  
 Test Type: Conventional Bottom Hole (Initial)  
 Tester: Ray Schwager  
 Unit No: 42  
 Reference Elevations: 1814.00 ft (KB)  
 1806.00 ft (CF)  
 KB to GR/CF: 8.00 ft

**Serial #: 6625 Inside**  
 Press@RunDepth: 52.38 psig @ 3023.00 ft (KB) Capacity: 8000.00 psig  
 Start Date: 2010.10.29 End Date: 2010.10.29 Last Calib.: 2010.10.29  
 Start Time: 01:21:27 End Time: 07:04:21 Time On Btm: 2010.10.29 @ 02:39:22  
 Time Off Btm: 2010.10.29 @ 05:48:21

TEST COMMENT: IFP-w k bl 1/2"to 3"bl  
 ISIP- no bl bk  
 FFP-w k bl 1/4"bl  
 FSIP-no bl bk



## PRESSURE SUMMARY

Time (Min.)	Pressure (psig)	Temp (deg F)	Annotation
0	1448.61	90.09	Initial Hydro-static
3	27.78	90.03	Open To Flow (1)
34	38.82	90.51	Shut-In(1)
65	709.70	91.16	End Shut-In(1)
65	37.24	91.03	Open To Flow (2)
132	52.38	92.04	Shut-In(2)
185	666.72	92.84	End Shut-In(2)
189	1417.88	93.97	Final Hydro-static

## Recovery

Length (ft)	Description	Volume (bbl)
65.00	GCM 10%G90%Mw /show of oil	0.91

## Gas Rates

Choke (inches)	Pressure (psig)	Gas Rate (Mcf/d)





**TRILOBITE  
TESTING, INC**

# DRILL STEM TEST REPORT

**TOOL DIAGRAM**

Prospect Oil & Gas Corp

**Leas-Ball #1**

P O Box 837  
Russell KS 67665

**28-14-15 Russell,KS**

Job Ticket: 40870

**DST#: 1**

ATTN: Brad Hutchison

Test Start: 2010.10.29 @ 01:21:27

## Tool Information

Drill Pipe:	Length: 3014.00 ft	Diameter: 3.80 inches	Volume: 42.28 bbl	Tool Weight:	2200.00 lb
Heavy Wt. Pipe:	Length: 0.00 ft	Diameter: 0.00 inches	Volume: 0.00 bbl	Weight set on Packer:	25000.00 lb
Drill Collar:	Length: 0.00 ft	Diameter: 0.00 inches	Volume: 0.00 bbl	Weight to Pull Loose:	55000.00 lb
			<u>Total Volume: 42.28 bbl</u>	Tool Chased	4.00 ft
Drill Pipe Above KB:	20.00 ft			String Weight: Initial	42000.00 lb
Depth to Top Packer:	3015.00 ft			Final	43000.00 lb
Depth to Bottom Packer:	ft				
Interval between Packers:	75.00 ft				
Tool Length:	96.00 ft				
Number of Packers:	2	Diameter: 6.75 inches			

Tool Comments:

## Tool Description

Tool Description	Length (ft)	Serial No.	Position	Depth (ft)	Accum. Lengths
Change Over Sub	1.00			2995.00	
Shut In Tool	5.00			3000.00	
Hydraulic tool	5.00			3005.00	
Packer	5.00			3010.00	21.00 Bottom Of Top Packer
Packer	5.00			3015.00	
Stubb	1.00			3016.00	
Perforations	7.00			3023.00	
Recorder	0.00	6625	Inside	3023.00	
Recorder	0.00	8652	Outside	3023.00	
Blank Spacing	64.00			3087.00	
Bullnose	3.00			3090.00	75.00 Bottom Packers & Anchor

**Total Tool Length: 96.00**



**TRILOBITE  
TESTING, INC**

# DRILL STEM TEST REPORT

**FLUID SUMMARY**

Prospect Oil & Gas Corp

**Leas-Ball #1**

P O Box 837  
Russell KS 67665

**28-14-15 Russell,KS**

Job Ticket: 40870

**DST#: 1**

ATTN: Brad Hutchison

Test Start: 2010.10.29 @ 01:21:27

## Mud and Cushion Information

Mud Type: Gel Chem

Cushion Type:

Oil API:

deg API

Mud Weight: 9.00 lb/gal

Cushion Length:

ft

Water Salinity:

ppm

Viscosity: 59.00 sec/qt

Cushion Volume:

bbbl

Water Loss: 7.56 in<sup>3</sup>

Gas Cushion Type:

Resistivity: ohm.m

Gas Cushion Pressure:

psig

Salinity: 2800.00 ppm

Filter Cake: 1.00 inches

## Recovery Information

Recovery Table

Length ft	Description	Volume bbl
65.00	GCM 10%G90%M w/show of oil	0.912

Total Length: 65.00 ft      Total Volume: 0.912 bbl

Num Fluid Samples: 0

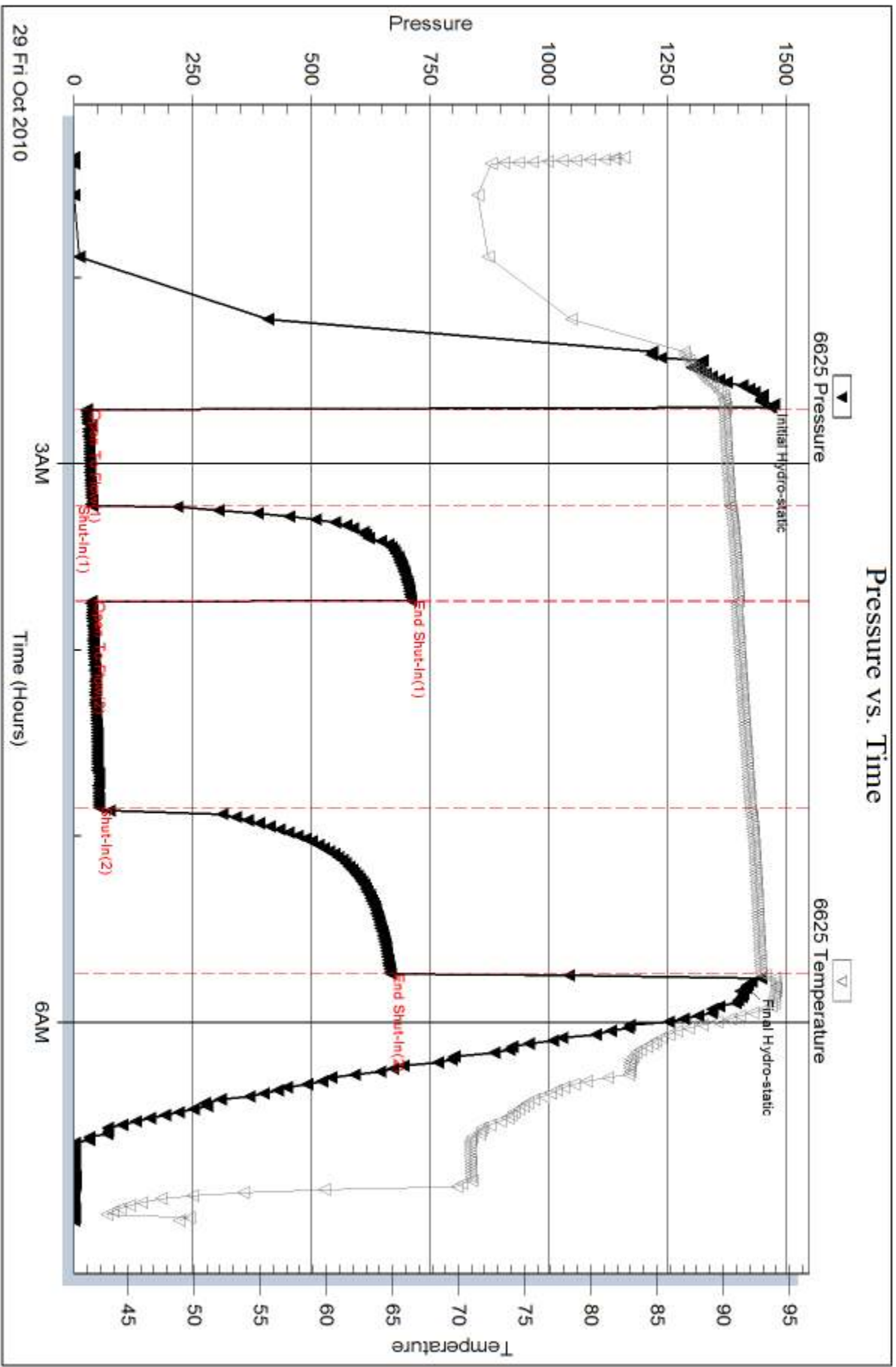
Num Gas Bombs: 0

Serial #:

Laboratory Name:

Laboratory Location:

Recovery Comments:

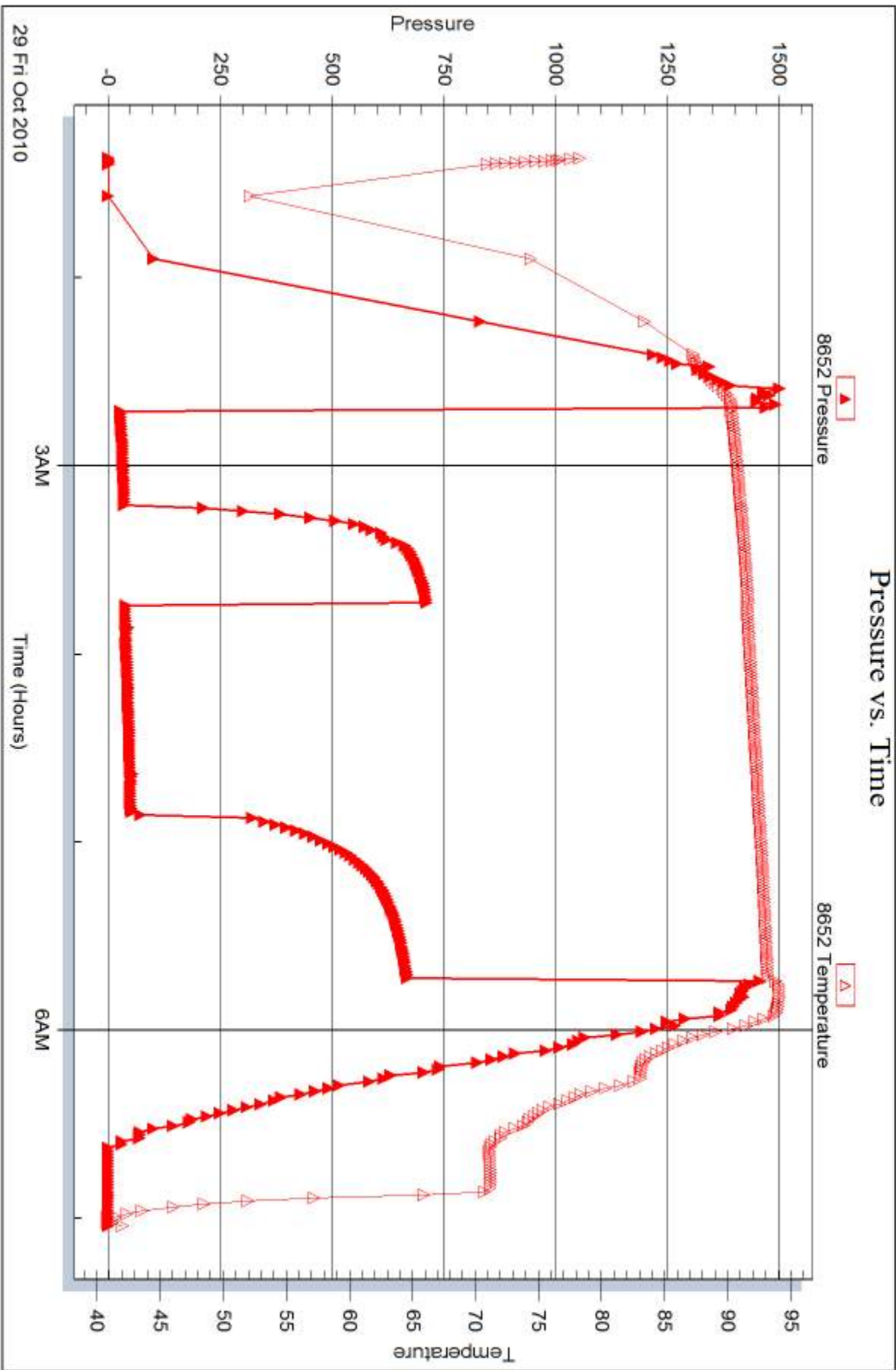


Serial #: 8652

Outside Prospect Oil & Gas Corp

28-14-15 Russell, KS

DST Test Number: 1





## DRILL STEM TEST REPORT

Prepared For: **Prospect Oil & Gas Corp**

P O Box 837  
Russell KS 67665

ATTN: Brad Hutchison

**28-14-15 Russell,KS**

**Leas-Ball #1**

Start Date: 2010.10.29 @ 12:52:35

End Date: 2010.10.29 @ 16:48:30

Job Ticket #: 40871                      DST #: 2

Trilobite Testing, Inc  
PO Box 362 Hays, KS 67601  
ph: 785-625-4778 fax: 785-625-5620

Printed: 2014.06.17 @ 10:00:29





**TRILOBITE TESTING, INC**

# DRILL STEM TEST REPORT

Prospect Oil & Gas Corp

**Leas-Ball #1**

P O Box 837  
Russell KS 67665

**28-14-15 Russell,KS**

ATTN: Brad Hutchison

Job Ticket: 40871

**DST#: 2**

Test Start: 2010.10.29 @ 12:52:35

## GENERAL INFORMATION:

Formation: **LKC E-F**

Deviated: No Whipstock: ft (KB)

Time Tool Opened: 14:30:30

Time Test Ended: 16:48:30

Test Type: Conventional Bottom Hole (Reset)

Tester: Ray Schwager

Unit No: 42

**Interval: 3090.00 ft (KB) To 3125.00 ft (KB) (TVD)**

Reference Elevations: 1814.00 ft (KB)

Total Depth: 3125.00 ft (KB) (TVD)

1806.00 ft (CF)

Hole Diameter: 7.88 inches Hole Condition: Fair

KB to GR/CF: 8.00 ft

**Serial #: 6625 Inside**

Press@RunDepth: 18.17 psig @ 3097.00 ft (KB)

Capacity: 8000.00 psig

Start Date: 2010.10.29 End Date: 2010.10.29

Last Calib.: 2010.10.29

Start Time: 12:52:35 End Time: 16:48:30

Time On Btm: 2010.10.29 @ 14:27:30

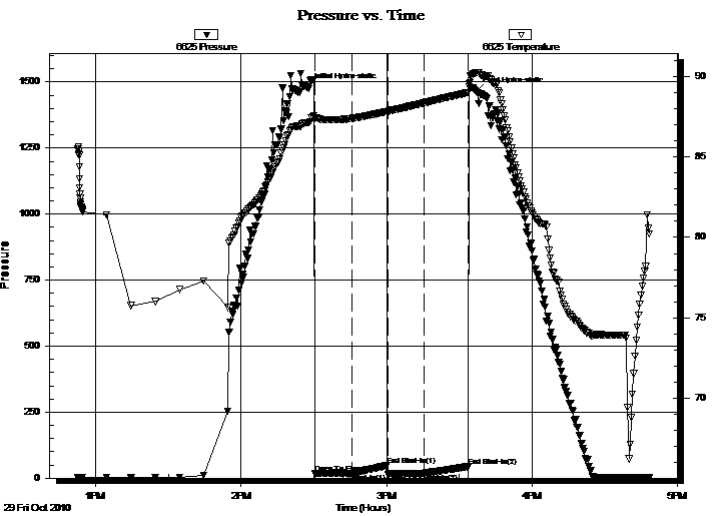
Time Off Btm: 2010.10.29 @ 15:37:00

TEST COMMENT: IFP-w k bl surface to 1/4"bl

ISIP-no bl

FFP-1/4"bl

FSIP-no bl



## PRESSURE SUMMARY

Time (Min.)	Pressure (psig)	Temp (deg F)	Annotation
0	1478.04	87.11	Initial Hydro-static
3	16.89	87.41	Open To Flow (1)
18	17.63	87.38	Shut-In(1)
33	47.40	87.81	End Shut-In(1)
33	14.11	87.82	Open To Flow (2)
48	18.17	88.35	Shut-In(2)
66	43.09	88.99	End Shut-In(2)
70	1462.73	90.23	Final Hydro-static

## Recovery

Length (ft)	Description	Volume (bbl)
5.00	SOCM5%O95%M	0.07

\* Recovery from multiple tests

## Gas Rates

Choke (inches)	Pressure (psig)	Gas Rate (Mcf/d)



**TRILOBITE TESTING, INC**

# DRILL STEM TEST REPORT

Prospect Oil & Gas Corp

**Leas-Ball #1**

P O Box 837  
Russell KS 67665

**28-14-15 Russell,KS**

ATTN: Brad Hutchison

Job Ticket: 40871

**DST#: 2**

Test Start: 2010.10.29 @ 12:52:35

## GENERAL INFORMATION:

Formation: **LKC E-F**

Deviated: No Whipstock: ft (KB)

Time Tool Opened: 14:30:30

Time Test Ended: 16:48:30

Test Type: Conventional Bottom Hole (Reset)

Tester: Ray Schwager

Unit No: 42

**Interval: 3090.00 ft (KB) To 3125.00 ft (KB) (TVD)**

Reference Elevations: 1814.00 ft (KB)

Total Depth: 3125.00 ft (KB) (TVD)

1806.00 ft (CF)

Hole Diameter: 7.88 inches Hole Condition: Fair

KB to GR/CF: 8.00 ft

**Serial #: 8652 Outside**

Press@RunDepth: psig @ 3097.00 ft (KB)

Capacity: 8000.00 psig

Start Date: 2010.10.29 End Date: 2010.10.29

Last Calib.: 2010.10.29

Start Time: 12:53:35 End Time: 16:48:00

Time On Btm:

Time Off Btm:

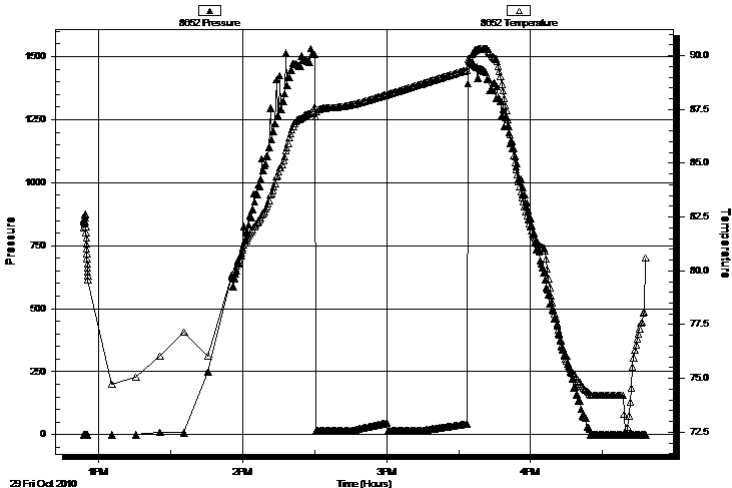
TEST COMMENT: IFP-w k bl surface to 1/4"bl

ISIP-no bl

FFP-1/4"bl

FSIP-no bl

Pressure vs. Time



## PRESSURE SUMMARY

Time (Min.)	Pressure (psig)	Temp (deg F)	Annotation

## Recovery

Length (ft)	Description	Volume (bbl)
5.00	SOCM5%O95%M	0.07

## Gas Rates

Choke (inches)	Pressure (psig)	Gas Rate (Mcf/d)

\* Recovery from multiple tests



**TRILOBITE  
TESTING, INC**

# DRILL STEM TEST REPORT

**TOOL DIAGRAM**

Prospect Oil & Gas Corp

**Leas-Ball #1**

P O Box 837  
Russell KS 67665

**28-14-15 Russell,KS**

Job Ticket: 40871

**DST#: 2**

ATTN: Brad Hutchison

Test Start: 2010.10.29 @ 12:52:35

## Tool Information

Drill Pipe:	Length: 3079.00 ft	Diameter: 3.80 inches	Volume: 43.19 bbl	Tool Weight: 2200.00 lb
Heavy Wt. Pipe:	Length: 0.00 ft	Diameter: 0.00 inches	Volume: 0.00 bbl	Weight set on Packer: 25000.00 lb
Drill Collar:	Length: 0.00 ft	Diameter: 0.00 inches	Volume: 0.00 bbl	Weight to Pull Loose: 55000.00 lb
			<u>Total Volume: 43.19 bbl</u>	Tool Chased 0.00 ft
Drill Pipe Above KB:	10.00 ft			String Weight: Initial 42000.00 lb
Depth to Top Packer:	3090.00 ft			Final 42000.00 lb
Depth to Bottom Packer:	ft			
Interval between Packers:	35.00 ft			
Tool Length:	56.00 ft			
Number of Packers:	2	Diameter: 6.75 inches		

Tool Comments:

## Tool Description

Tool Description	Length (ft)	Serial No.	Position	Depth (ft)	Accum. Lengths
Change Over Sub	1.00			3070.00	
Shut In Tool	5.00			3075.00	
Hydraulic tool	5.00			3080.00	
Packer	5.00			3085.00	21.00 Bottom Of Top Packer
Packer	5.00			3090.00	
Stubb	1.00			3091.00	
Perforations	6.00			3097.00	
Recorder	0.00	6625	Inside	3097.00	
Recorder	0.00	8652	Outside	3097.00	
Perforations	25.00			3122.00	
Bullnose	3.00			3125.00	35.00 Bottom Packers & Anchor

**Total Tool Length: 56.00**



**TRILOBITE  
TESTING, INC**

# DRILL STEM TEST REPORT

**FLUID SUMMARY**

Prospect Oil & Gas Corp

**Leas-Ball #1**

P O Box 837  
Russell KS 67665

**28-14-15 Russell,KS**

Job Ticket: 40871

**DST#: 2**

ATTN: Brad Hutchison

Test Start: 2010.10.29 @ 12:52:35

## Mud and Cushion Information

Mud Type: Gel Chem

Cushion Type:

Oil API:

deg API

Mud Weight: 9.00 lb/gal

Cushion Length:

ft

Water Salinity:

ppm

Viscosity: 59.00 sec/qt

Cushion Volume:

bbbl

Water Loss: 7.56 in<sup>3</sup>

Gas Cushion Type:

Resistivity: ohm.m

Gas Cushion Pressure:

psig

Salinity: 2800.00 ppm

Filter Cake: 1.00 inches

## Recovery Information

Recovery Table

Length ft	Description	Volume bbl
5.00	SOCM5%O95%M	0.070

Total Length: 5.00 ft      Total Volume: 0.070 bbl

Num Fluid Samples: 0

Num Gas Bombs: 0

Serial #:

Laboratory Name:

Laboratory Location:

Recovery Comments:

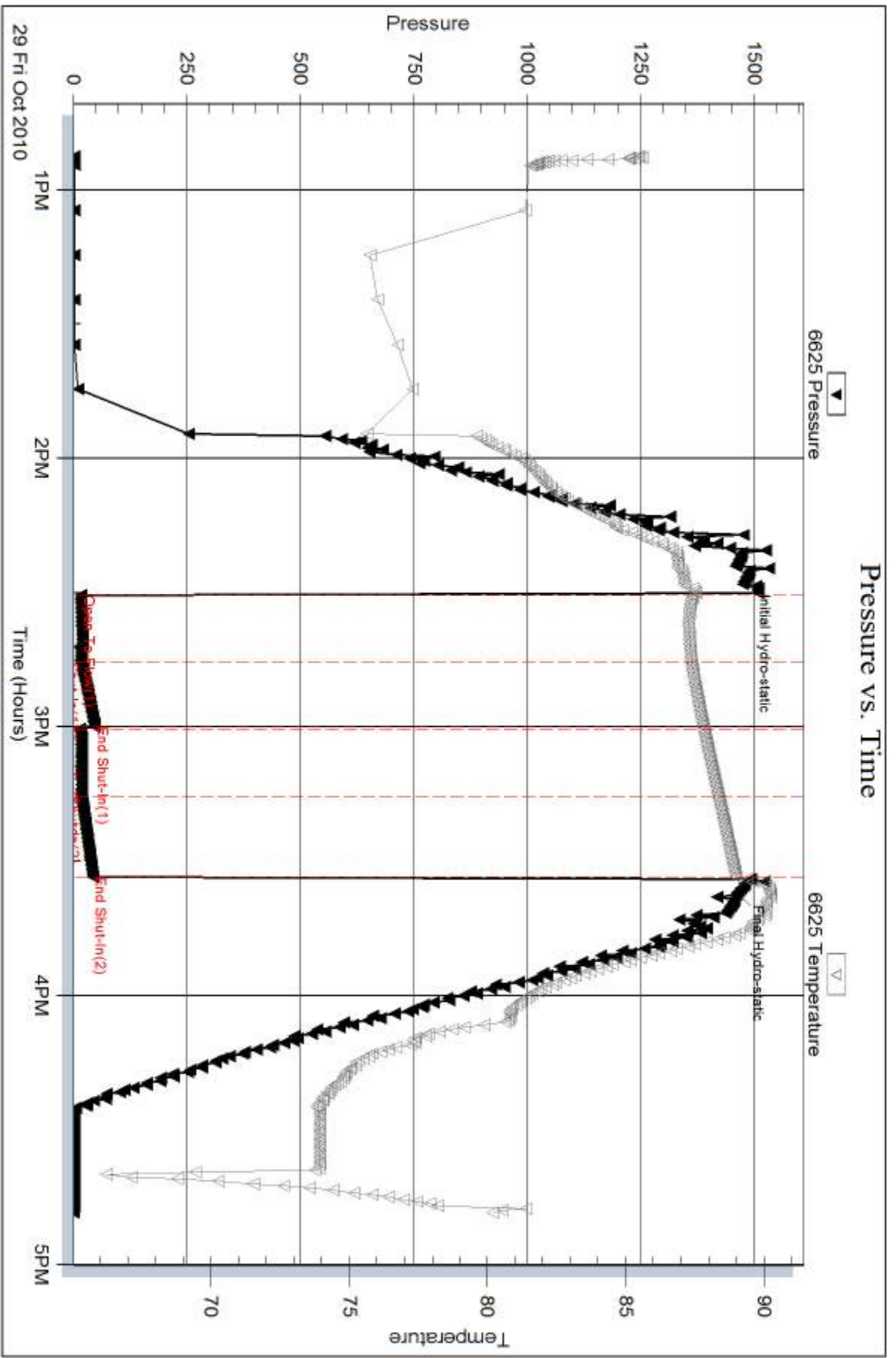
Serial #: 6625

Inside

Prospect Oil & Gas Corp

28-14-15 Russell, KS

DST Test Number: 2



Trilobite Testing, Inc

Ref. No: 40871

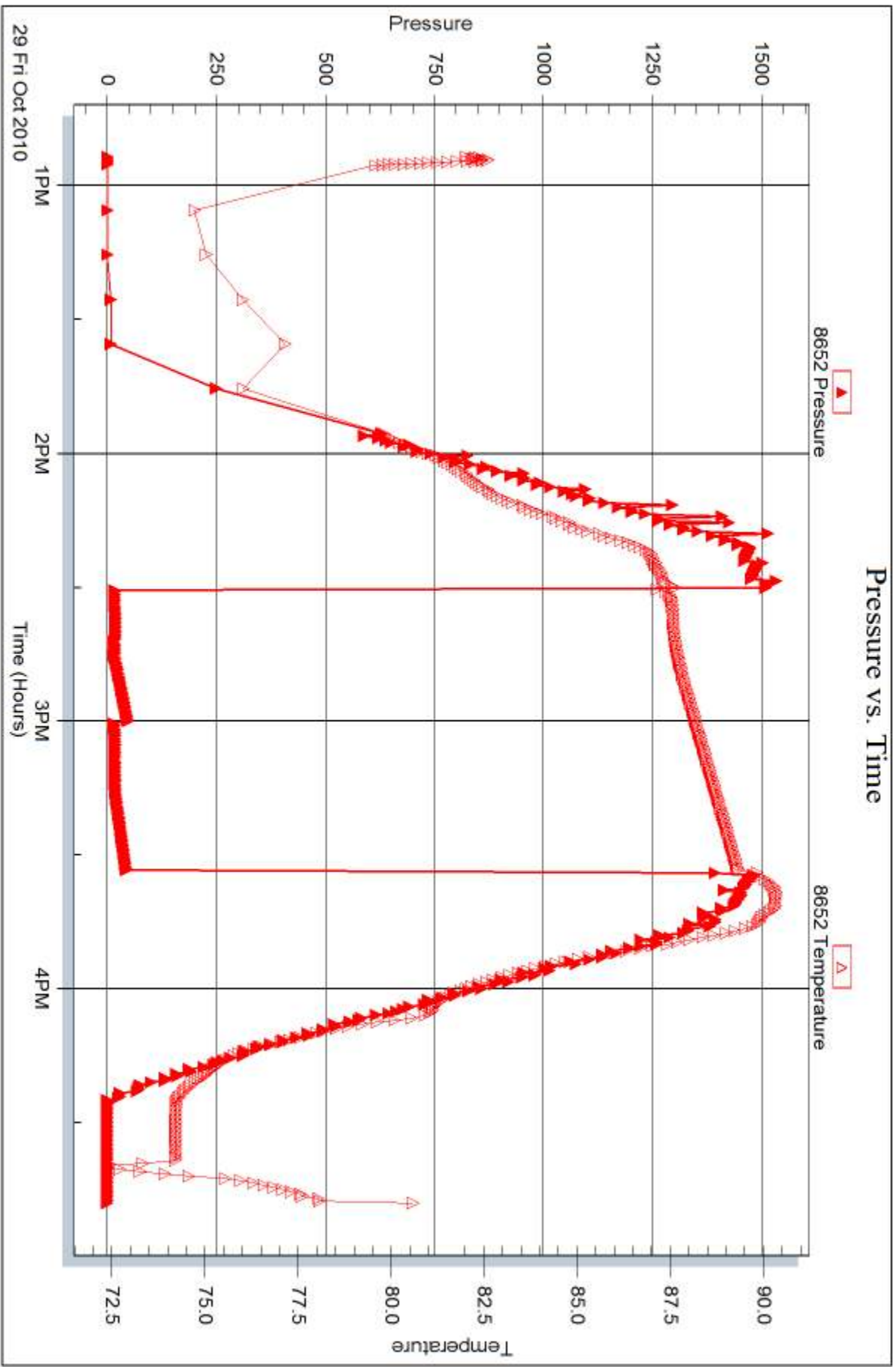
Printed: 2014.06.17 @ 10:00:30

Serial #: 8652

Outside Prospect Oil & Gas Corp

28-14-15 Russell, KS

DST Test Number: 2





## DRILL STEM TEST REPORT

Prepared For: **Prospect Oil & Gas Corp**

P O Box 837  
Russell KS 67665

ATTN: Brad Hutchison

**28-14-15 Russell,KS**

**Leas-Ball #1**

Start Date: 2010.10.30 @ 02:41:10

End Date: 2010.10.30 @ 07:42:04

Job Ticket #: 40872                      DST #: 3

Trilobite Testing, Inc  
PO Box 362 Hays, KS 67601  
ph: 785-625-4778 fax: 785-625-5620

Printed: 2014.06.17 @ 09:59:34



**TRILOBITE TESTING, INC**

# DRILL STEM TEST REPORT

Prospect Oil & Gas Corp

**Leas-Ball #1**

P O Box 837  
Russell KS 67665

**28-14-15 Russell,KS**

ATTN: Brad Hutchison

Job Ticket: 40872

**DST#: 3**

Test Start: 2010.10.30 @ 02:41:10

## GENERAL INFORMATION:

Formation: **LKC**

Deviated: No Whipstock: ft (KB)

Time Tool Opened: 04:13:05

Time Test Ended: 07:42:04

Test Type: Conventional Bottom Hole (Reset)

Tester: Ray Schwager

Unit No: 42

**Interval: 3160.00 ft (KB) To 3230.00 ft (KB) (TVD)**

Reference Elevations: 1814.00 ft (KB)

Total Depth: 3230.00 ft (KB) (TVD)

1806.00 ft (CF)

Hole Diameter: 7.88 inches Hole Condition: Fair

KB to GR/CF: 8.00 ft

**Serial #: 6625 Inside**

Press@RunDepth: 20.77 psig @ 3164.00 ft (KB)

Capacity: 8000.00 psig

Start Date: 2010.10.30 End Date: 2010.10.30

Last Calib.: 2010.10.30

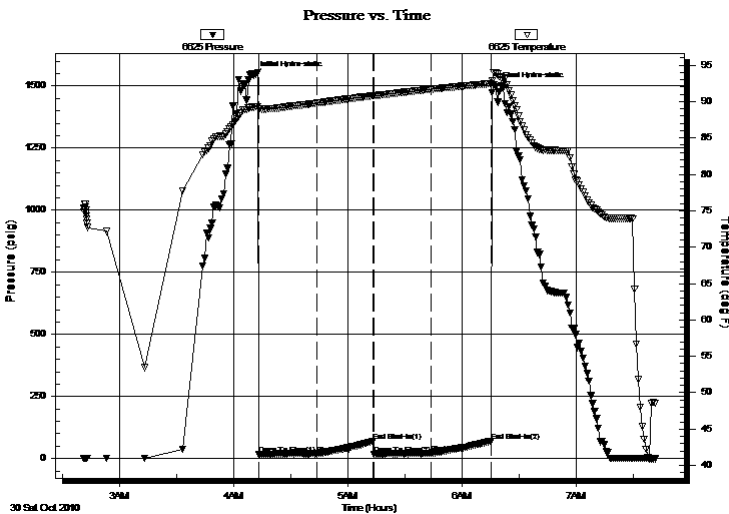
Start Time: 02:41:10 End Time: 07:42:04

Time On Btm: 2010.10.30 @ 04:10:35

Time Off Btm: 2010.10.30 @ 06:17:35

TEST COMMENT: IFP-w k bl surface to 1/4"bl  
ISIP-no bl  
FFP-w k bl 2"to 2 1/2"bl  
FSIP-no bl

## PRESSURE SUMMARY



Time (Min.)	Pressure (psig)	Temp (deg F)	Annotation
0	1542.20	89.25	Initial Hydro-static
3	16.55	89.05	Open To Flow (1)
33	18.69	89.78	Shut-In(1)
63	70.13	90.79	End Shut-In(1)
63	18.57	90.79	Open To Flow (2)
93	20.77	91.68	Shut-In(2)
125	70.23	92.45	End Shut-In(2)
127	1496.71	93.93	Final Hydro-static

## Recovery

Length (ft)	Description	Volume (bbl)
0.00	45'GIP	0.00
15.00	SOCM 5%O95%M	0.21

## Gas Rates

Choke (inches)	Pressure (psig)	Gas Rate (Mcf/d)

\* Recovery from multiple tests







**TRILOBITE  
TESTING, INC**

# DRILL STEM TEST REPORT

**TOOL DIAGRAM**

Prospect Oil & Gas Corp

**Leas-Ball #1**

P O Box 837  
Russell KS 67665

**28-14-15 Russell,KS**

Job Ticket: 40872

**DST#: 3**

ATTN: Brad Hutchison

Test Start: 2010.10.30 @ 02:41:10

## Tool Information

Drill Pipe:	Length: 3170.00 ft	Diameter: 3.80 inches	Volume: 44.47 bbl	Tool Weight: 2200.00 lb
Heavy Wt. Pipe:	Length: 0.00 ft	Diameter: 0.00 inches	Volume: 0.00 bbl	Weight set on Packer: 25000.00 lb
Drill Collar:	Length: 0.00 ft	Diameter: 0.00 inches	Volume: 0.00 bbl	Weight to Pull Loose: 55000.00 lb
			<u>Total Volume: 44.47 bbl</u>	Tool Chased 0.00 ft
Drill Pipe Above KB:	31.00 ft			String Weight: Initial 42000.00 lb
Depth to Top Packer:	3160.00 ft			Final 42000.00 lb
Depth to Bottom Packer:	ft			
Interval between Packers:	70.00 ft			
Tool Length:	91.00 ft			
Number of Packers:	2	Diameter: 6.75 inches		

Tool Comments:

## Tool Description

Tool Description	Length (ft)	Serial No.	Position	Depth (ft)	Accum. Lengths
Change Over Sub	1.00			3140.00	
Shut In Tool	5.00			3145.00	
Hydraulic tool	5.00			3150.00	
Packer	5.00			3155.00	21.00 Bottom Of Top Packer
Packer	5.00			3160.00	
Stubb	1.00			3161.00	
Perforations	3.00			3164.00	
Recorder	0.00	6625	Inside	3164.00	
Recorder	0.00	8652	Outside	3164.00	
Blank Spacing	63.00			3227.00	
Bullnose	3.00			3230.00	70.00 Bottom Packers & Anchor

**Total Tool Length: 91.00**



**TRILOBITE  
TESTING, INC**

# DRILL STEM TEST REPORT

## FLUID SUMMARY

Prospect Oil & Gas Corp

**Leas-Ball #1**

P O Box 837  
Russell KS 67665

**28-14-15 Russell,KS**

Job Ticket: 40872

**DST#: 3**

ATTN: Brad Hutchison

Test Start: 2010.10.30 @ 02:41:10

### Mud and Cushion Information

Mud Type: Gel Chem

Cushion Type:

Oil API:

deg API

Mud Weight: 9.00 lb/gal

Cushion Length:

ft

Water Salinity:

ppm

Viscosity: 60.00 sec/qt

Cushion Volume:

bbbl

Water Loss: 8.77 in<sup>3</sup>

Gas Cushion Type:

Resistivity: ohm.m

Gas Cushion Pressure:

psig

Salinity: 2800.00 ppm

Filter Cake: 1.00 inches

### Recovery Information

Recovery Table

Length ft	Description	Volume bbl
0.00	45'GIP	0.000
15.00	SOCM 5%O95%M	0.210

Total Length: 15.00 ft      Total Volume: 0.210 bbl

Num Fluid Samples: 0

Num Gas Bombs: 0

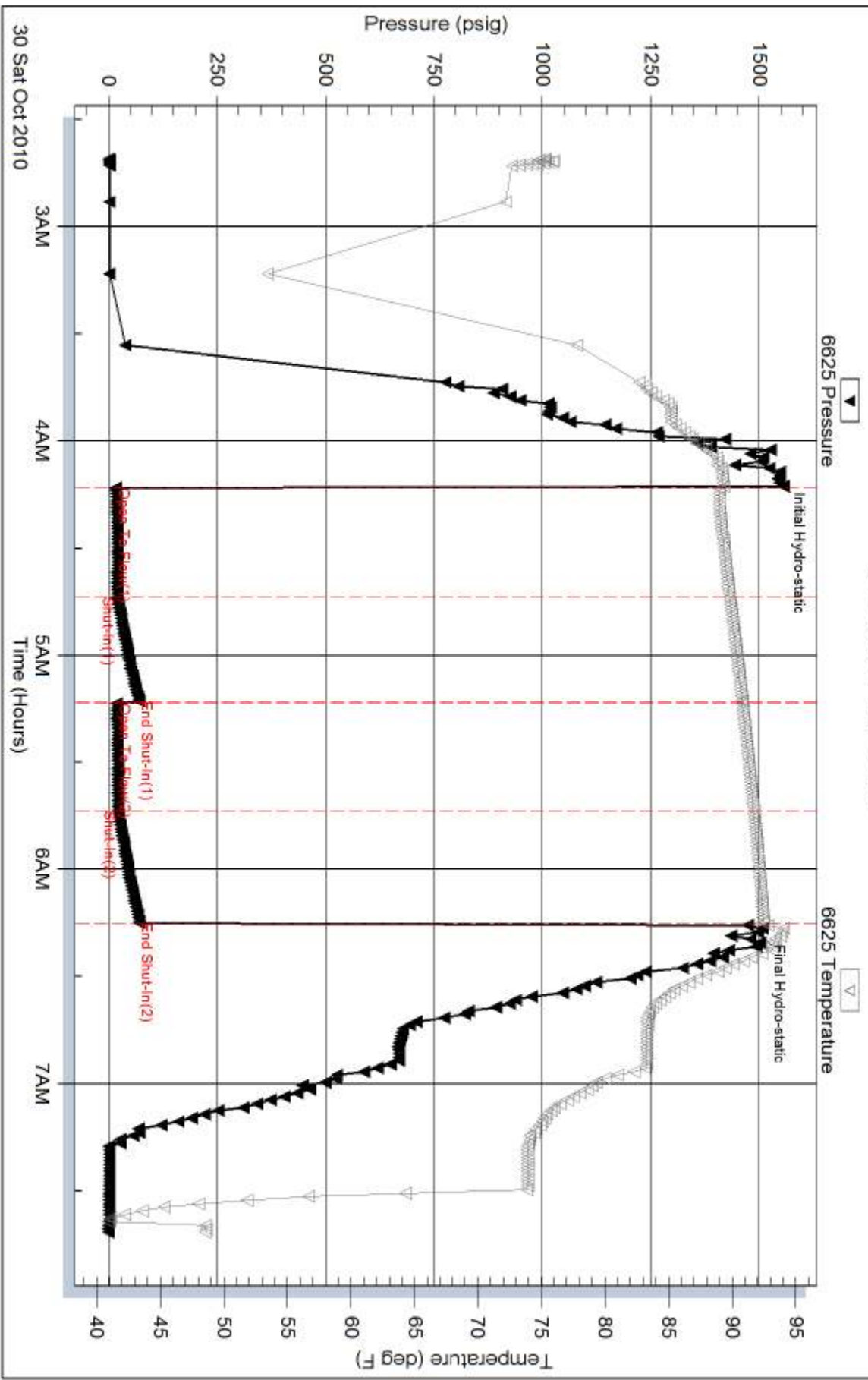
Serial #:

Laboratory Name:

Laboratory Location:

Recovery Comments:

### Pressure vs. Time



Serial #: 8652

Outside Prospect Oil & Gas Corp

28-14-15 Russell, KS

DST Test Number: 3

