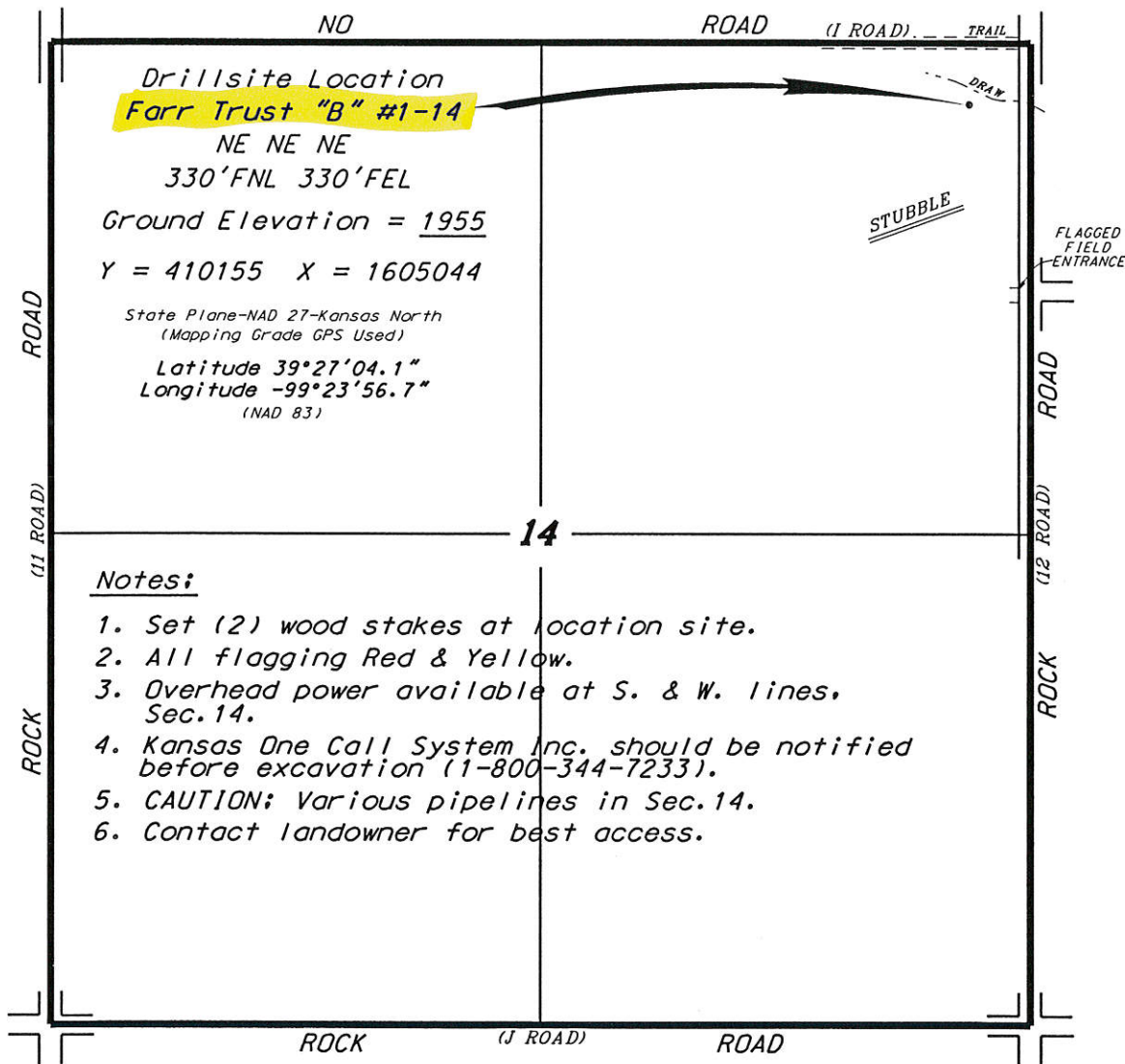
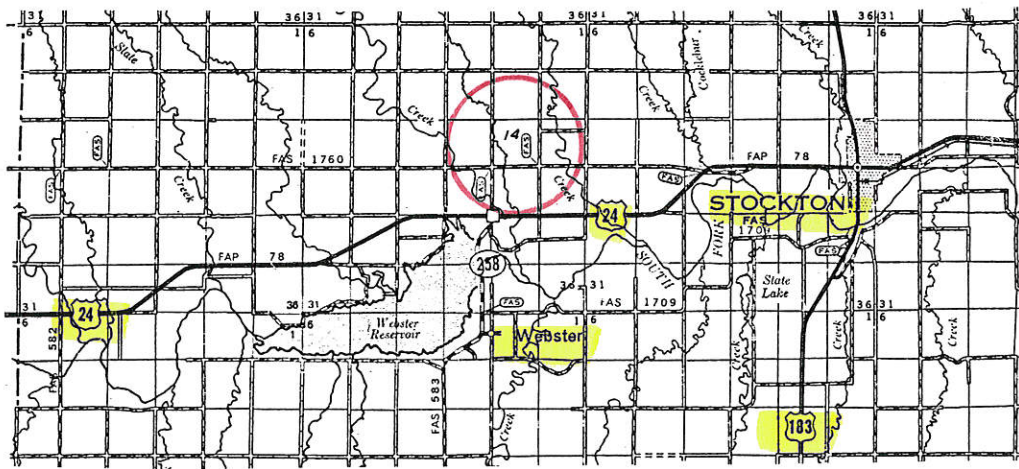


MCCOY PETROLEUM CORPORATION
 FARR LEASE
 NE.1/4, SECTION 14, T7S, R19W
 ROOKS COUNTY, KANSAS

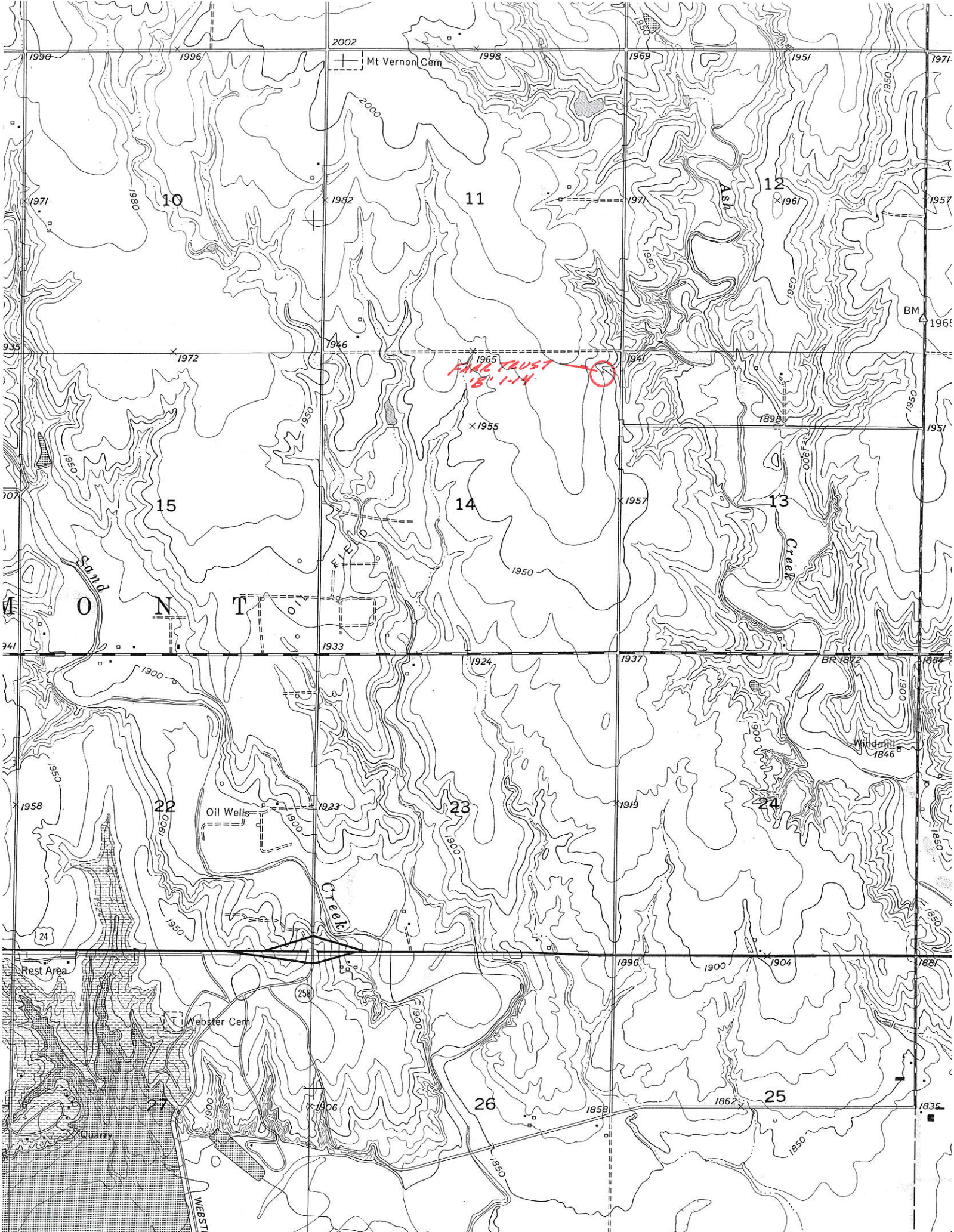


*Ingress and egress to location as shown on this plot is for usage only and may not be legally opened for public use. Contact landowner, tenant and county road department for access.



* Controlling data is based upon the best maps and photographs available to us and upon a regular section of land containing 640 acres.
 * Approximate section lines were determined using the normal standard of care of oilfield surveyors practicing in the state of Kansas. The section corners, which establish the precise section lines, were not necessarily located, and the exact location of the drillsite location in the section is not guaranteed. Therefore, the operator securing this service and accepting this plot and all other parties relying thereon agree to hold Central Kansas Oilfield Services, Inc., its officers and employees harmless from all losses, costs and expenses and said entities released from any liability from incidental or consequential damages.
 * Elevations derived from National Geodetic Vertical Datum.

Date June 3, 2014



2002
Mt Vernon Cem

11

12

10

14

13

15

23

24

22

26

25

27

MAY TRUST
181-14

Spring
Creek

Creek

Oil Wells

Windmill
1846

Rest Area

Webster Cem

Quarry

WEBSTER

BM
1961

BR 1872

24

1881

1835

1990

1996

2002

1998

1969

1951

1971

1971

1981

1992

1977

1961

1957

1935

1972

1946

1965

1941

1898

1951

1907

1960

1950

1955

1957

1900

1951

1941

1900

1933

1924

1937

1900

1884

1958

1950

1923

1924

1919

1900

1950

24

1950

1900

1900

1904

1900

1881

1906

1906

1906

1858

1896

1900

1881

1858

1862

1858

1858

1862

1850

1835

1835

1850

1850

1850

1850

1850

1835