

# Saman Sharifaie

## Petroleum Geologist

### GEOLOGIST'S REPORT

#### DRILLING TIME AND SAMPLE LOG

COMPANY: **Martin Drilling Co., Inc.**  
LEASE: **Abell Ranch "A" #1 -31**

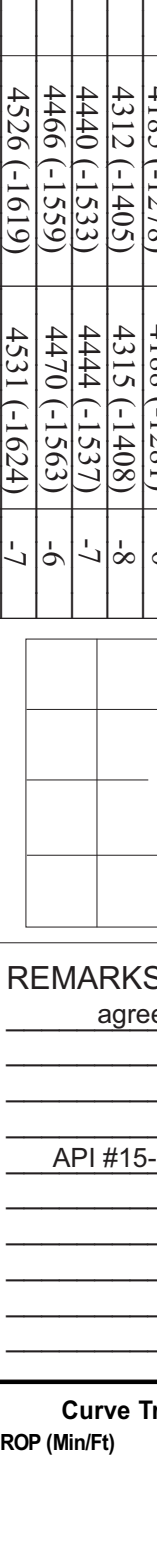
FIELD: **Wildcat**  
LOCATION: **330' FNL & 330' EWL**  
SEC: **31 TWPSE 12S RGE 30W**  
COUNTY: **Gore STATE Kansas**  
CONTRACTOR: **Martin Drilling #22**  
SPUD: **02/21/14 COMP 03/03/14**  
RTD: **4:02:51 LTD 46:27'**  
MUD UP: **3:00' TYPE MUD Chemical**

SAMPLES SAVED FROM: **3600'** TO RTD  
DRILLING TIME KEPT FROM: **3600'** TO RTD  
SAMPLES EXAMINED FROM: **3600'** TO RTD  
GEOLOGICAL SUPERVISION FROM: **3300'**

REFERENCE WELL: **Abell Ranch "A" #1 -30**  
CND: **D.L. MEL; S.M.C**  
Porewater: **Hydrilite**

ELEVATIONS  
KB 2907'

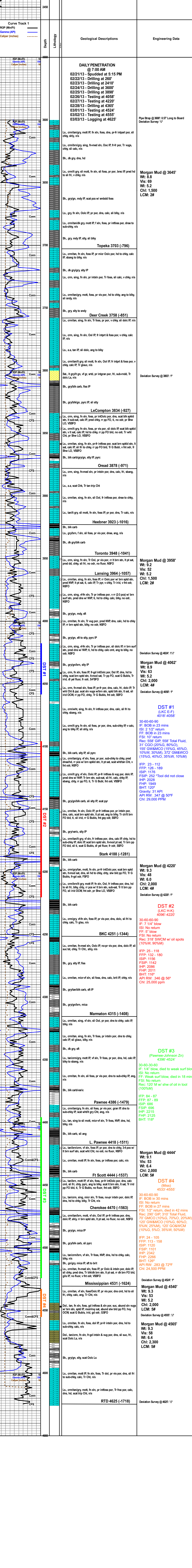
Formation	Sample Tops	E-log Tops	Strat Pos.
Ambyndrite	2395 (+512)	2395 (+512)	-1
Basal Ambyndrite	2419 (+488)	2421 (+486)	-1
Timaska	3703 (-796)	3703 (-796)	-4
Healdier	3919 (-1012)	3923 (-1016)	-6
Stark	4183 (-1278)	4188 (-1283)	-8
Martin	4312 (-1405)	4315 (-1408)	-8
FT Scott	4440 (-1533)	4444 (-1537)	-7
Cherokee	4466 (-1559)	4470 (-1563)	-6
Mississippian	4526 (-1619)	4531 (-1624)	-7



REMARKS Due to fair to good shows of oil in multiple pay zones and positive DST results, it is recommended and agreed upon by all parties that production casing be set to further evaluate this well.

Respectfully Submitted,  
API #15-063-22177  
Saman Sharifaie  
Petroleum Geologist

\*Tops have been adjusted to electric logs



Deviation Survey @ 4524: 1"

Deviation Survey @ 4555: 1/2"

Deviation Survey @ 4625: 1/2"