

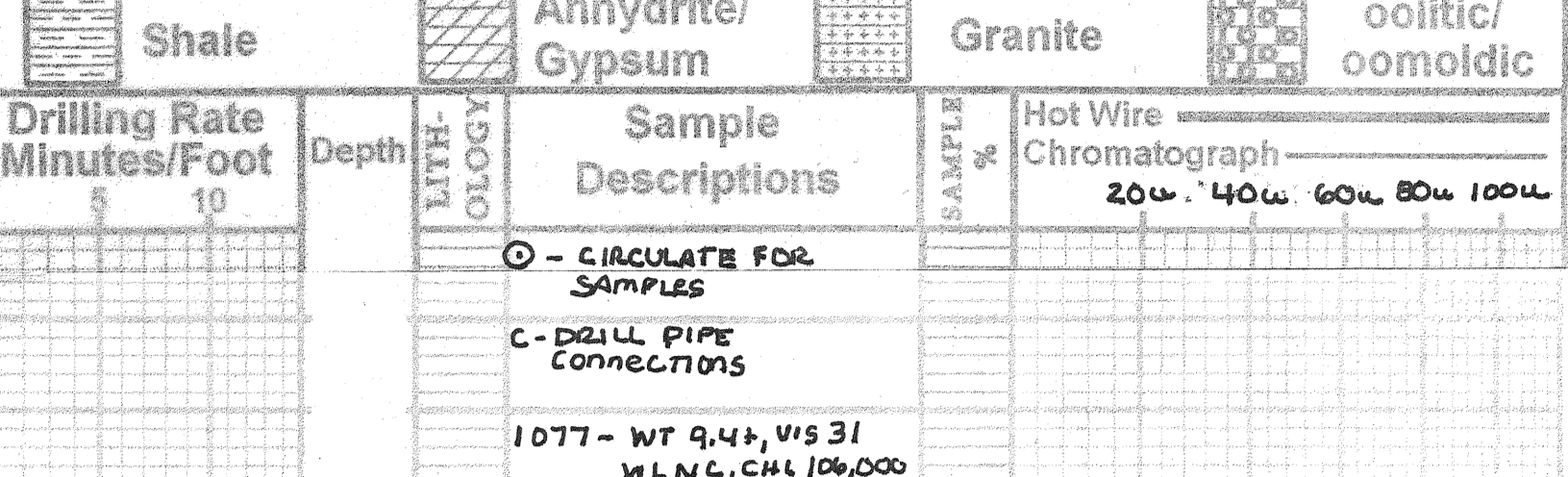


Geological Report

Geological Report details including well name (VINCENT OIL CORP. MAJOR 3-21), location (Ford County, Kansas), and various technical specifications like depth (4150 feet) and completion date (3-1-14).

Table with 4 columns: Date, Time, Penetration (ft/min), and Bit Record. It lists data for various dates in 2014, including bit rates and penetration values.

Table titled 'Formation Tops' with columns for Sample Tops, Electric Tops, and Dates. It lists geological formation names like BASSON, CASING, and HERBERT SHALE with their corresponding depths and dates.



Legend for geological symbols: Sandstone, Siltstone, Shale, Limestone, Dolomite, Anhydrite/Gypsum, Chert, Granite Wash, Granite, Coal/Carb. Shale, Conglomerate, oolitic/oolimoid.

Table with columns: Drilling Rate (Minutes/Foot), Depth, Sample Descriptions, and Hot Wire Chromatograph. It provides data for various depths and sample types.

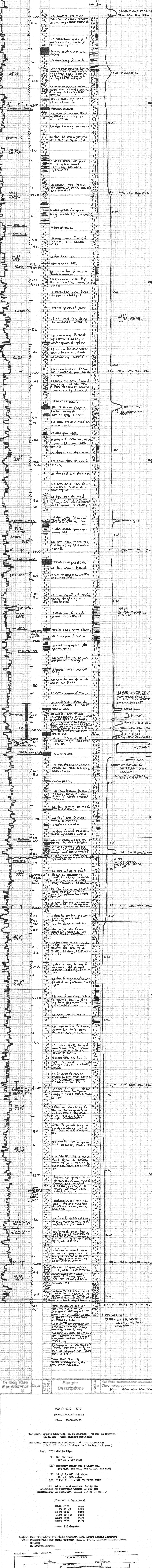


Table with columns: Drilling Rate (Minutes/Foot), Depth, Sample Descriptions, and Hot Wire Chromatograph. It provides data for depths 5000, 5100, 5200, 5300, 5400, and 5500 feet.

Notes and observations: '1st open: strong blow OEBB in 60 seconds - NO Gas to Surface', '2nd open: blow OEBB in 3 minutes - NO Gas to Surface', and 'Rec: 920 Gas in Pipe'.

