

LINN OPERATING INC. SHORE C-4 ATU-58  
 202' FSL  
 255' FWL  
 SW/4 OF SW/4 OF SW/4 OF SW/4 OF  
 SECTION 18, T-30-S, R-39-W  
 LATITUDE: 37°25'57.27852" N  
 LONGITUDE: 101°38'01.70687" W  
 GROUND ELEVATION: 3224.6'



*Keller*  
 Surveying &  
 Mapping

2330 B LAKEVIEW DRIVE  
 AMARILLO, TEXAS 79109  
 PH: (806)418-5253

DRAWN BY: MTK  
 APPROVED BY: JJK  
 SCALE: 1" = 500'  
 DATE: 12/20/13

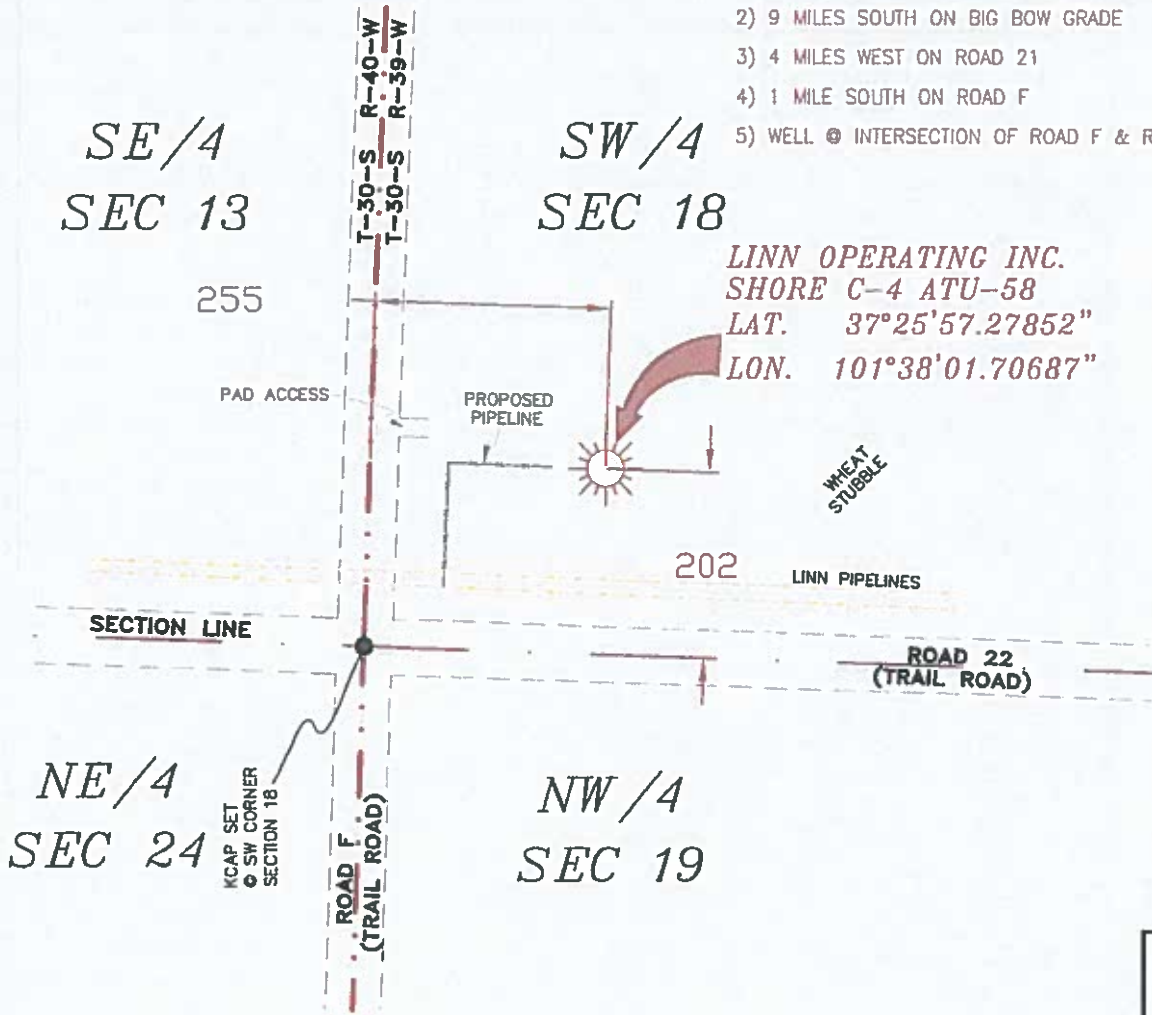
**LINN**  
 Energy

HARRISLINE

2225 W. OKLAHOMA AVE.  
 ULYSSES KANSAS 67880  
 PH: (620)356-6940  
 FAX: (620)356-6950

**DRIVING DIRECTIONS:**

- BEGINNING AT INTERSECTION OF US HWY 160 & HWY 25
- 1) 11 MILES WEST ON HWY 160 TO BIG BOW GRADE
  - 2) 9 MILES SOUTH ON BIG BOW GRADE
  - 3) 4 MILES WEST ON ROAD 21
  - 4) 1 MILE SOUTH ON ROAD F
  - 5) WELL @ INTERSECTION OF ROAD F & ROAD 22



LINN OPERATING INC.  
 SHORE C-4 ATU-58  
 LAT. 37°25'57.27852"  
 LON. 101°38'01.70687"

**NOTES:**

- 1) THIS PLAN DOES NOT REPRESENT A TRUE BOUNDARY SURVEY. THE FOOTINGS AND LINES SHOWN ARE FROM LINES OF OCCUPATION WHICH MAY NOT BE ACTUAL PROPERTY LINES.
- 2) CONTRACTOR TO CONTACT ONE-CALL FOR FOREIGN UTILITY LOCATIONS PRIOR TO ANY EXCAVATION OR CONSTRUCTION.
- 3) NAD 27 LAT-LONG

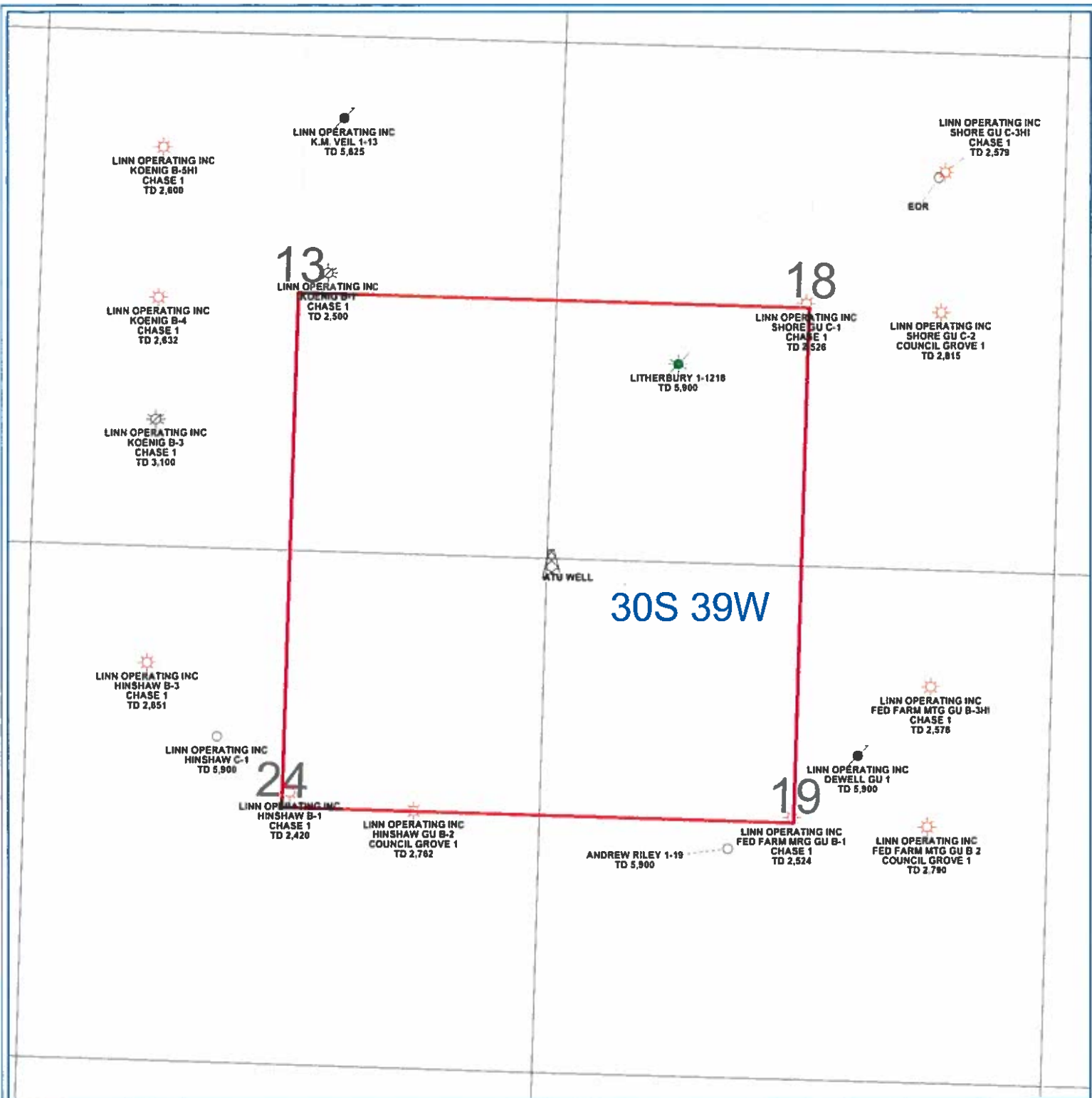


JOHN DAVID KELLER, L.S. NO. 1518



T-30-S, R-39&40-W  
 STANTON COUNTY, KANSAS

**LINN OPERATING INC.**  
**SHORE C4 ATU-58**  
 SECTIONS 18 & 19, T-30-S, R39-W,  
 SECTIONS 13 & 24, T-30-S, R-40-W,  
 STANTON COUNTY,  
 KANSAS



PETRA 12/10/2012 10 28 47 AM

<b>LINN OPERATING INC</b>	
<b>KANSAS HUGOTON</b>	
<b>ATU LOCATION</b>	
Sec 19 - 30S - 39W Stanton Co.	
<b>WELL SYMBOLS</b>	
	ATU Well Location
	Gas Well
	Plugged and Abandoned
	Plugged & Abandoned Gas Well
	Plugged And Abandoned Oil and
December 10, 2012	

# PLAT AND CERTIFICATION OF ACREAGE ATTRIBUTABLE TO A GAS WELL

Kansas Corporation Commission, Conservation Division  
 Finney State Office Building, 130 South Market, Room 2078  
 Wichita, Kansas 67202

API NUMBER 15- \_\_\_\_\_

LOCATION OF WELL: COUNTY Stanton

OPERATOR LINN Operating, Inc.

202 S feet from south/north line of section

LEASE Shore

255 W feet from east / west line of section

WELL NUMBER C-4 ATU-58

FIELD Hugoton-Panoma

SECTION 18 TWP 30 (S) RG 39W E/W

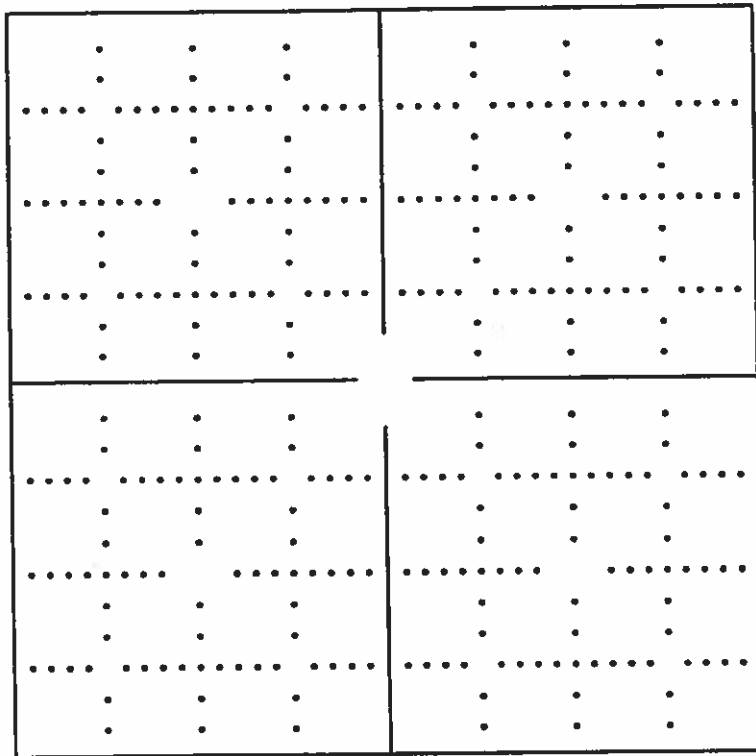
IS SECTION X REGULAR or \_\_\_\_\_ IRREGULAR

IF SECTION IS IRREGULAR, LOCATE WELL FROM  
 NEAREST CORNER BOUNDARY. (check line below)

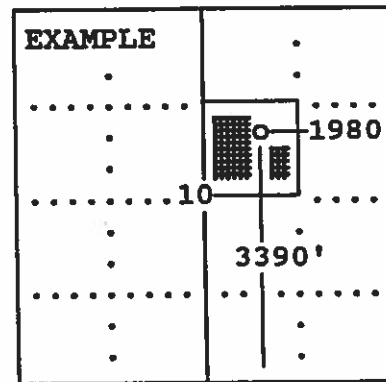
Section corner used: \_\_\_\_\_ NE \_\_\_\_\_ NW \_\_\_\_\_ SE \_\_\_\_\_ SW

NUMBER OF ACRES ATTRIBUTABLE TO WELL 640  
 QTR/QTR/QTR OF ACREAGE SW - SW - SW

(Show the location of the well and shade attributable acreage for prorated or spaced wells).  
 (Show the footage to the nearest lease or unit boundary line; and show footage to the nearest common source supply well).



*see attached  
map*



SEWARD CO.

The undersigned hereby certifies as Regulatory Compliance Advisor (title) for  
LINN Operating, Inc. (Co.), a duly authorized agent, that all

information shown hereon is true and correct to the best of my knowledge and belief, that all acreage claimed attributable to the well named herein is held by production from that well and hereby make application for an allowable to be assigned to the well upon the filing of this form and the State test, whichever is later.

Signature *Mindy Potora*

Subscribed and sworn to before me on this 17th day of June, 19 2014

*Mindy Potora*

Notary Public

FORM CG-8 (12/94)

My Commission expires \_\_\_\_\_

