

GEOLOGICAL FILE



GAMMA-GUARD SIDEWALL NEUTRON LOG

COMPANY: FIELD TRINT
 WELL: Young #1
 FIELD: GARLISCH SW
 COUNTY: KINGMAN STATE: KANSAS
 Location: 200' W - 1/2 E - SW - NE Other Services: BOTTOM GAMMA
 Sec. 27 Twp 28^s Rge 8^w

Permanent Datum: GROUND LEVEL Elev. 1621 Elev. KB 1632
 Log Measured From: KELLY BUSHING 9 Ft. Above Perm. Datum D.F. 1621
 Drilling Measured From: KELLY BUSHING G.L. 1621

Date	GAMMA	GUARD	NEUTRON
Run No.	ONE	ONE	ONE
Depth—Driller	4092	4092	4092
Depth—Welex	4088	4088	4088
Bltn. Log Inter.	4060	4074	4087
Top Log Inter.	SURFACE	230	3000
Casing—Driller	8 5/8 @ 230	@	@
Casing—Welex	230		
Bit Size	7 7/8		
Type Fluid in Hole	DRILLING MUD		
Dens. Visc.	9.1 47		
pH Fluid Loss	12.5 19.0 ml		
Source of Sample	FLOWLINE		
R _{pa} @ Meas. Temp.	.44 @ 58 °F	@ °F	@ °F
R _{pl} @ Meas. Temp.	.40 @ 60 °F	@ °F	@ °F
R _{pr} @ Meas. Temp.	.50 @ 62 °F	@ °F	@ °F
Source R _{pr} / R _{pr}	MEASURED		
R _m @ BHT	.24 @ 112 °F	@ °F	@ °F
Time Since Circ.	2 HRS.		
Max. Rec. Temp.	112 °F @ 712	°F @	°F @

Ticket No. 80552 Remarks:

In-Mud Type or Additional Samples	SCALE CHANGES		EQUIPMENT DATA	
	Type Log	Depth	Run No.	Tool Type and No.
Sample No. - Driller		G-GRD-SW 4087	ONE	901-13
id in Hole				17112
Visc.				DECENT.
kg Loss				
of Sample				
leas. Temp.	@ °F			
leas. Temp.	@ °F			
leas. Temp.	@ °F			
R _m / R _{pr}				
HT				
TT				
HT				

Welex does not guarantee the accuracy of any interpretation of log data, conversion of log data to physical rock parameters, or recommendations which may be given by Welex personnel or which may appear on the log or in any other form. Any user of such data, interpretations, conversions, or recommendations agrees that Welex is not responsible, except in the event of gross negligence or willful misconduct, for any loss, damages, or expenses resulting from the use thereof.

EQUIPMENT DATA		NEUTRON	
Run No.	ONE	Run No.	ONE
Log Type	901	Log Type	NEUTRON-NEUTRON
Tool Model No.	3 5/8"	Tool Model No.	901
Diameter	102A-A	Diameter	4"
Detector Model No.	SLINT	Detector Model No.	166
Type	4"	Type	HE-3
Length	28'	Length	10"
Source Model No.		Source Model No.	241
Serial No.		Serial No.	607
Spacing		Spacing	
Type		Type	Am-Be
Strength		Strength	5 CURIES

LOGGING DATA		GAMMA RAY		NEUTRON	
Speed	T.C.	Speed	T.C.	Speed	T.C.
Sens.		Sens.		Sens.	
Zero		Zero		Zero	
API GR Units		API GR Units		API N. Units	

Source Model No.	24/607
Serial No.	607
Spacing	AM-Be
Type	5 CURIES
Strength	

LOGGING DATA

GENERAL		GAMMA RAY		NEUTRON				
Speed	T.C.	Sens.	Zero	API G R. Units	T.C.	Sens.	Zero	API N. Units
ft/Min.	Sec.	Settings	Div. L or R	per Log Div.	Sec.	Settings	Div. L or R	per Log Div.
From 4087	2	120	10	12	2	3300	2.2	165
To 3000	1	120	10	12				
SURFACE								

* See TIME MARKERS

5" = 100'

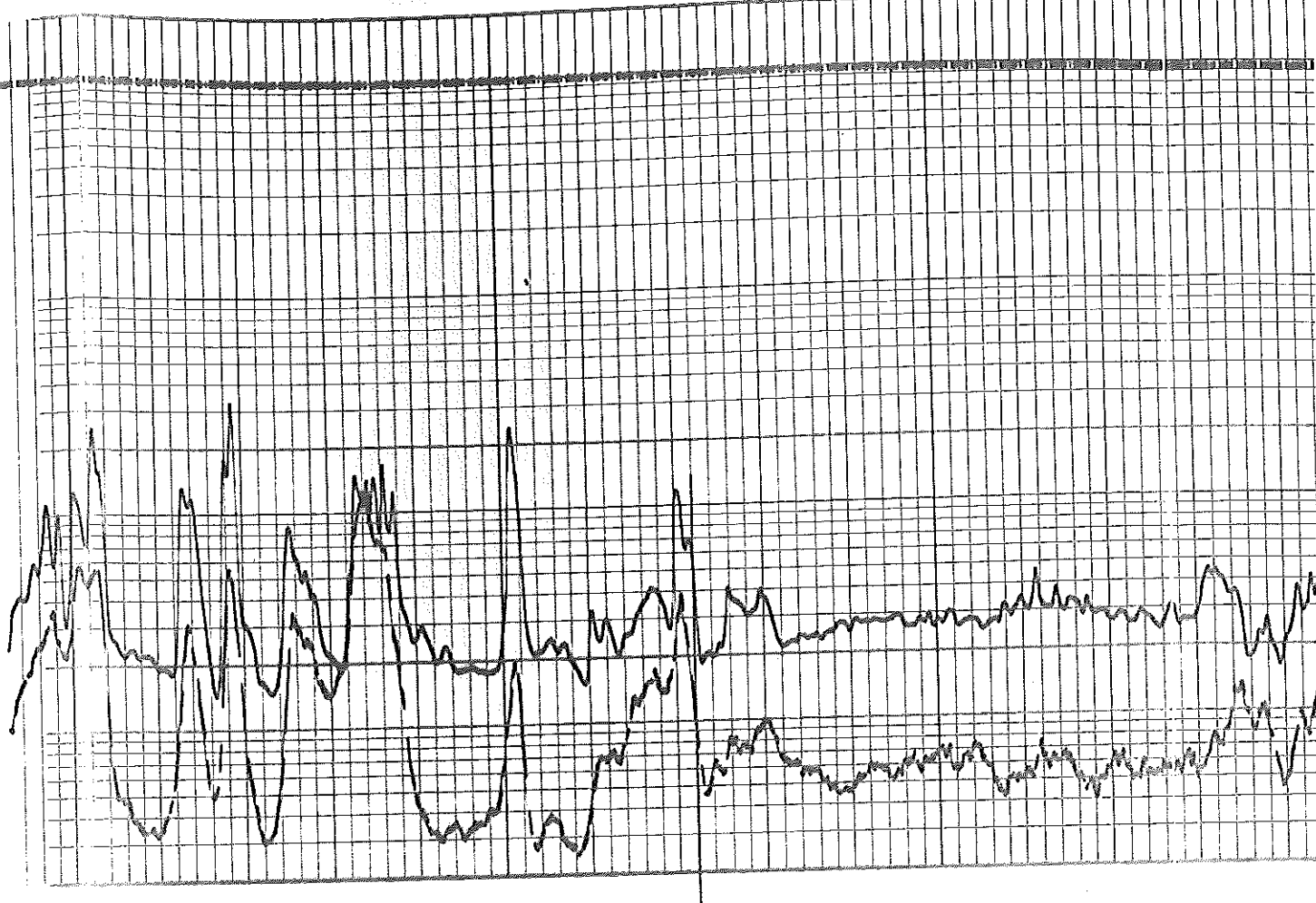
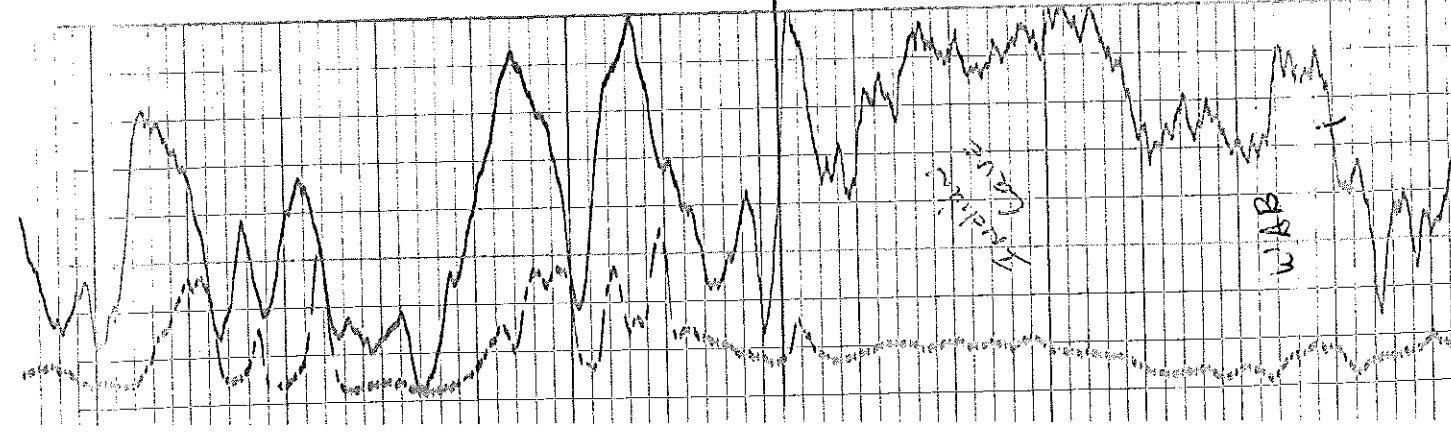
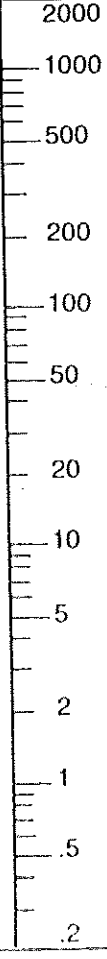
CALLIPER
Average Diameter in. 16

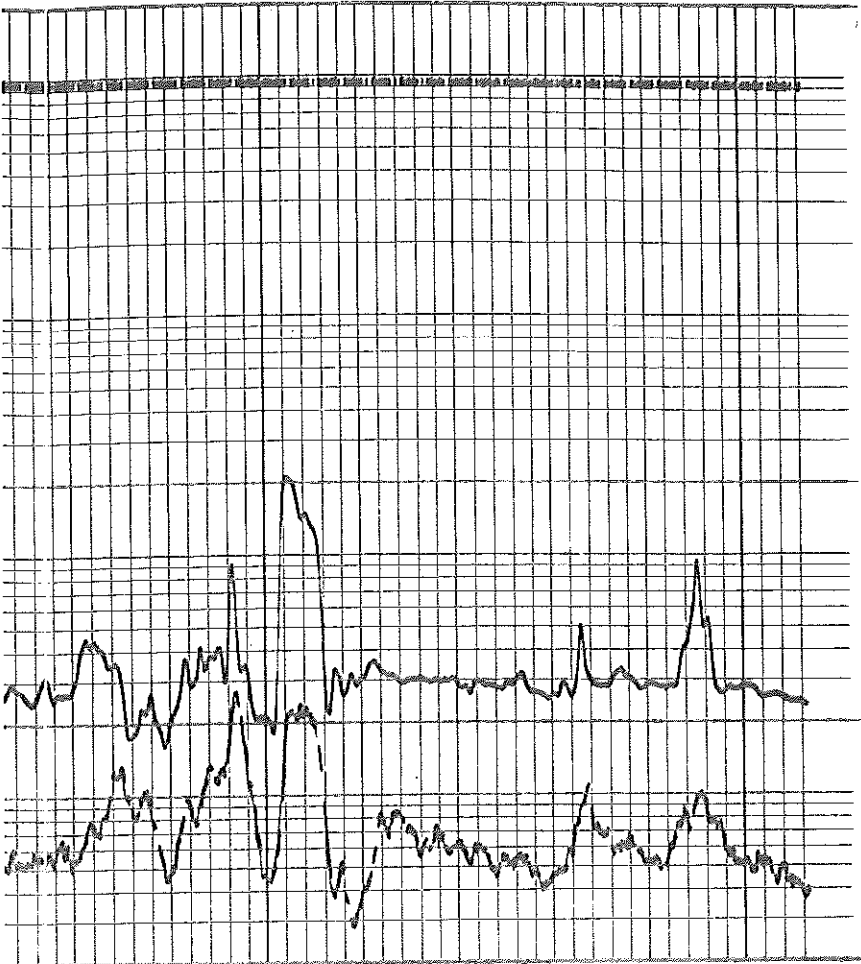
NEUTRON COUNT RATE
API Neutron Units 3663

$R_w = .05$

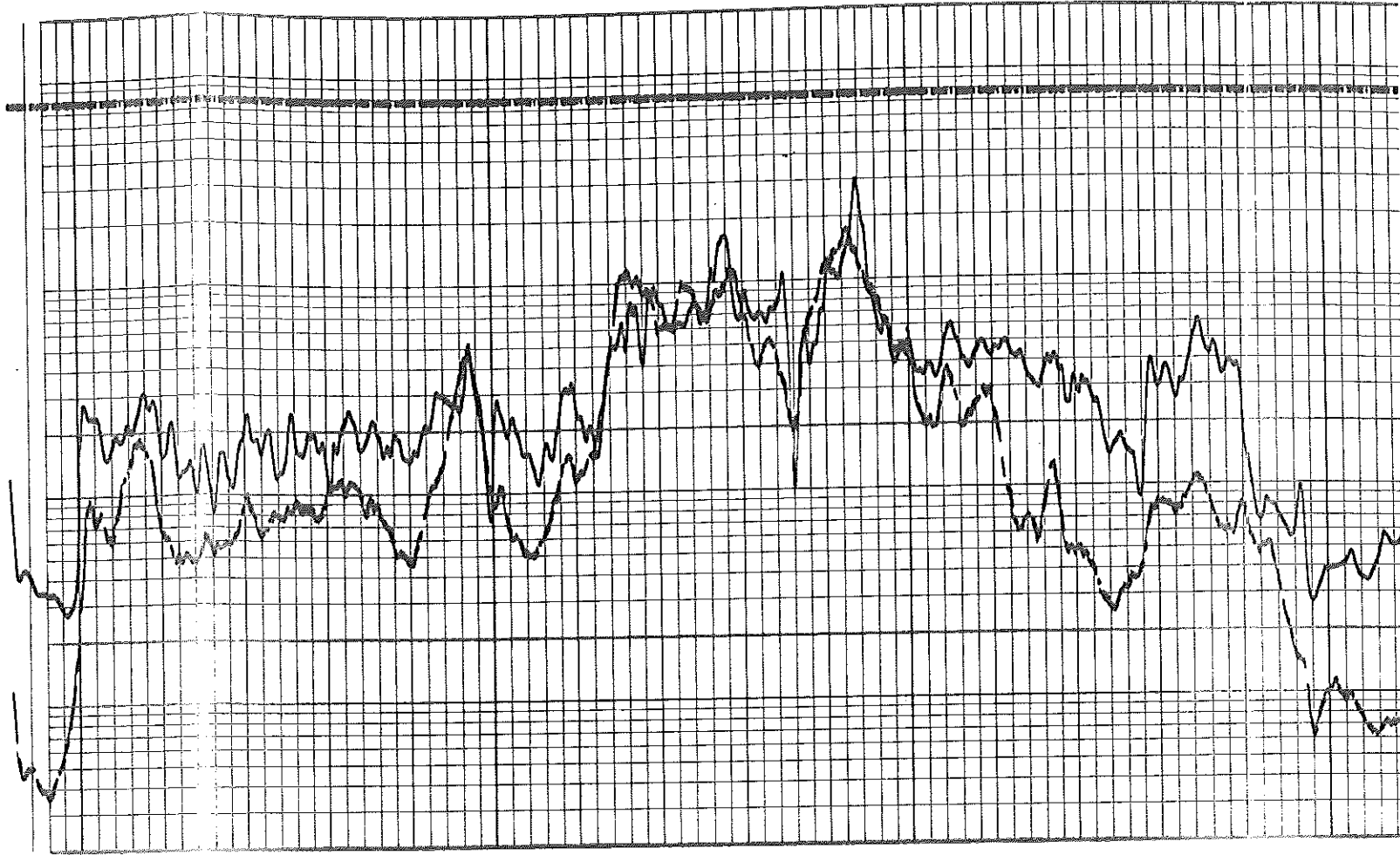
GAMMA
API Gamma Ray Units 120
360

GUARD RESISTIVITY OHMS M²/M



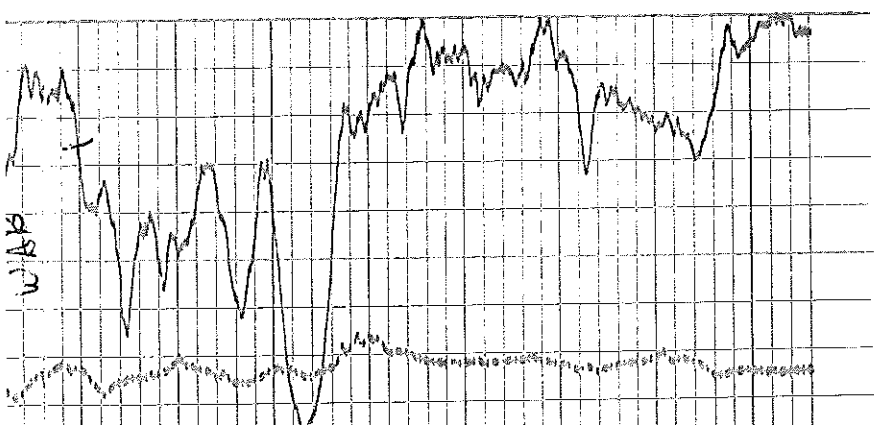


2300

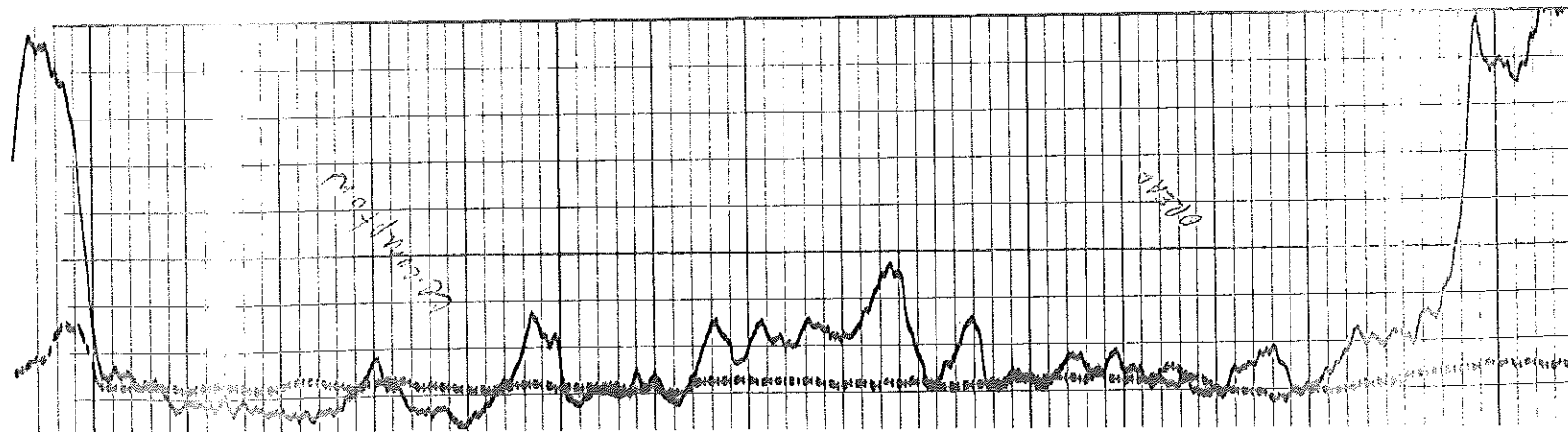


3000

3100

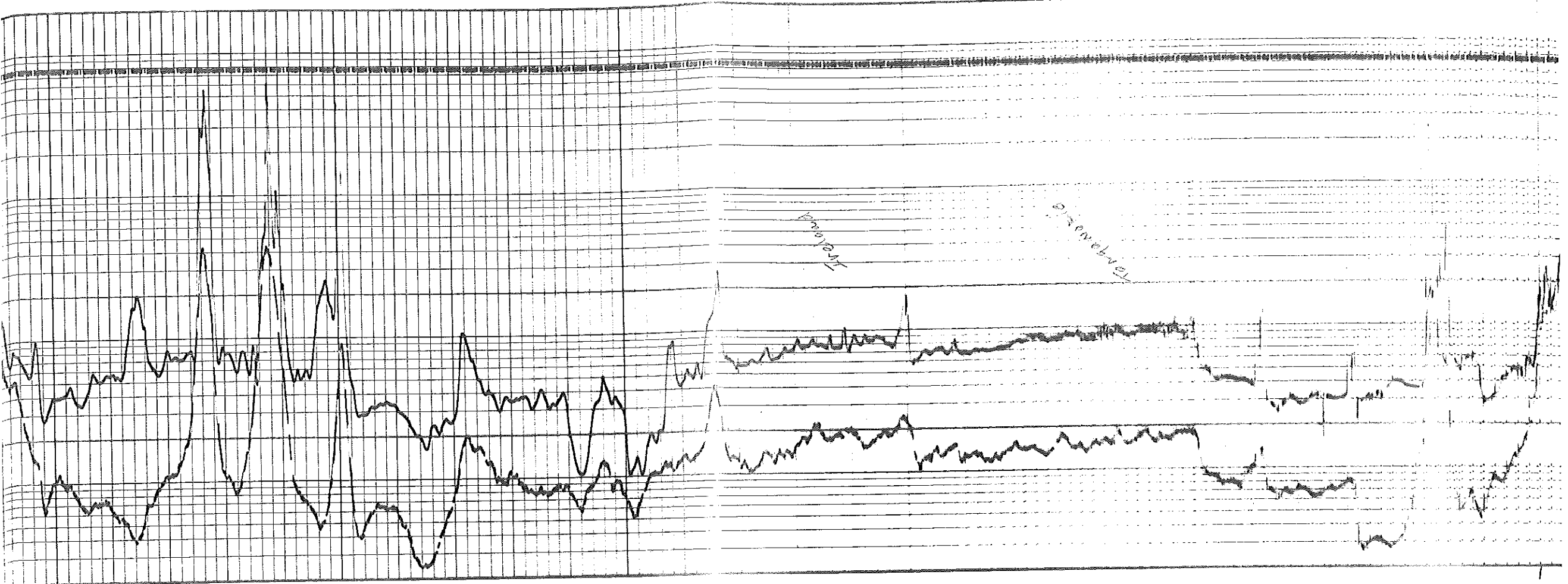


WAB



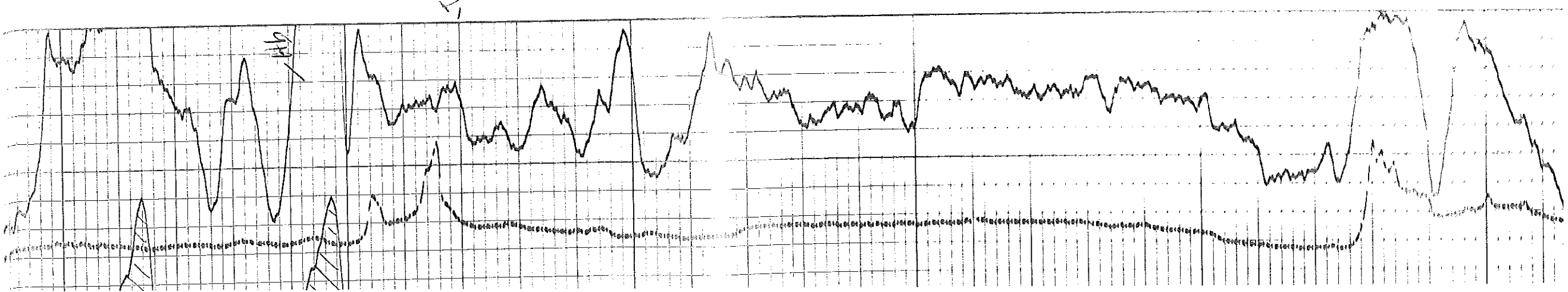
201/1/23

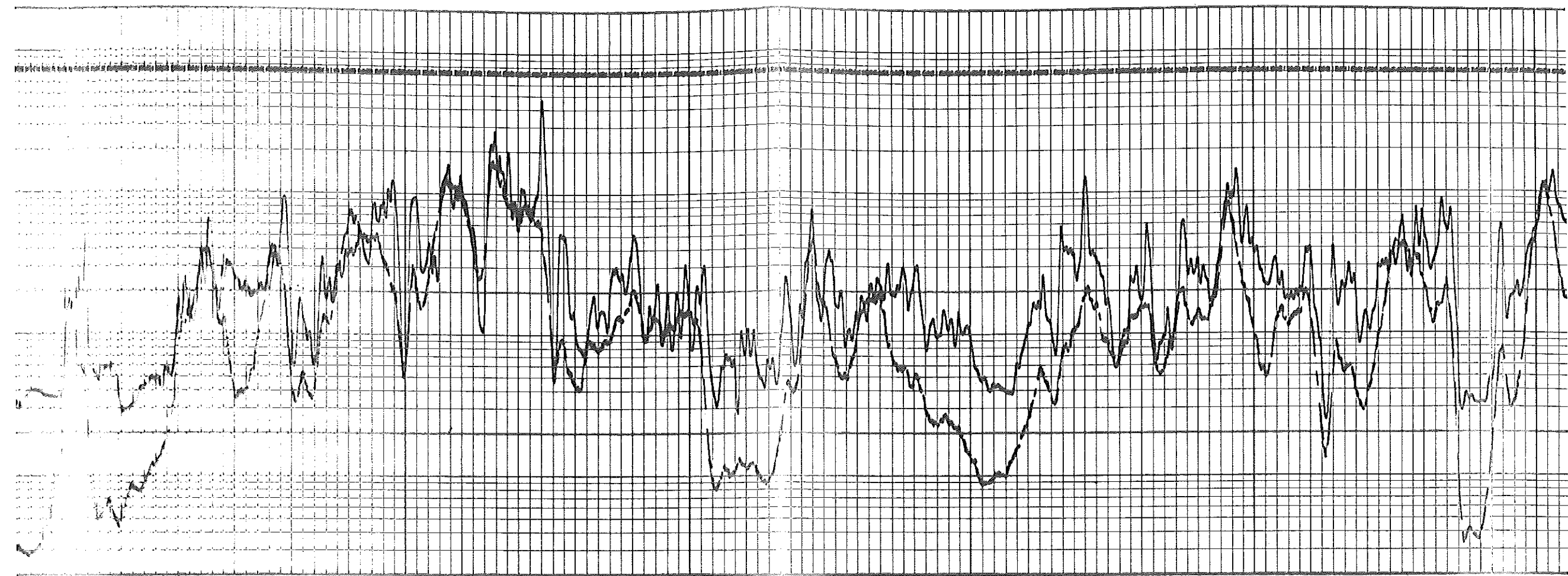
02710



3200

3300

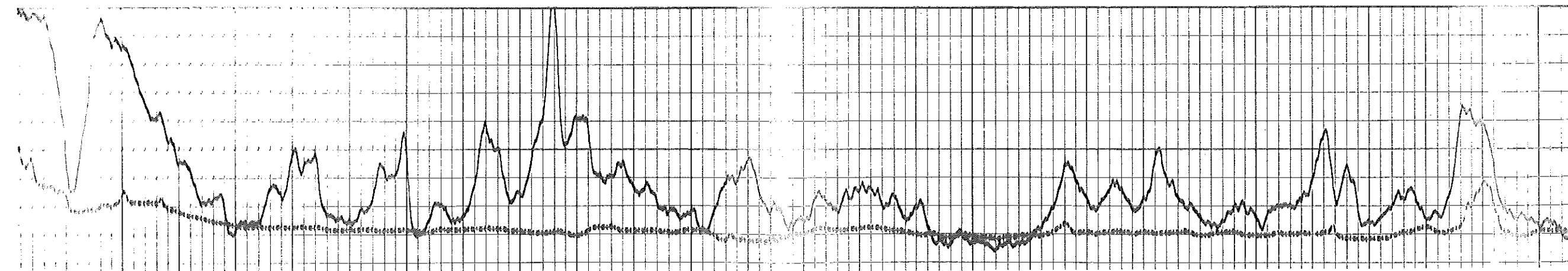


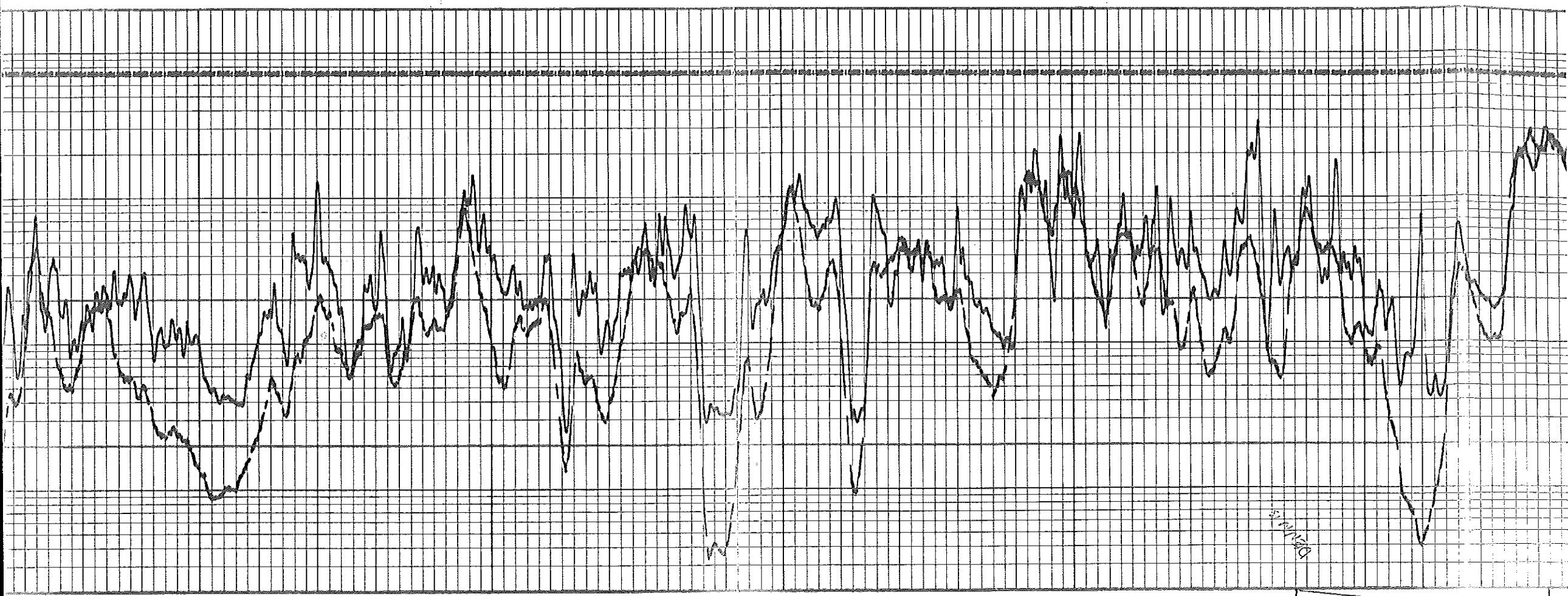


3500

3600

Low

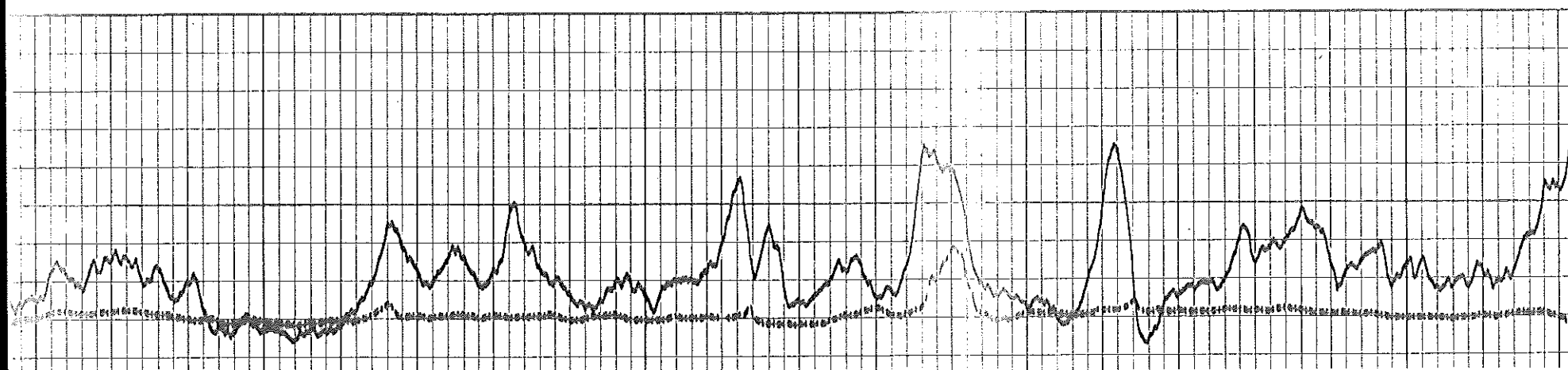




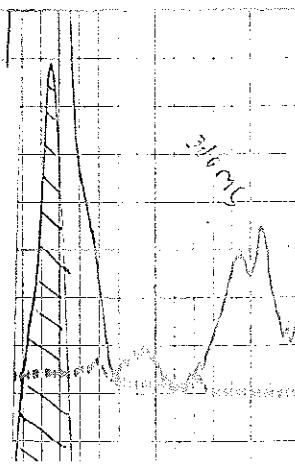
3600

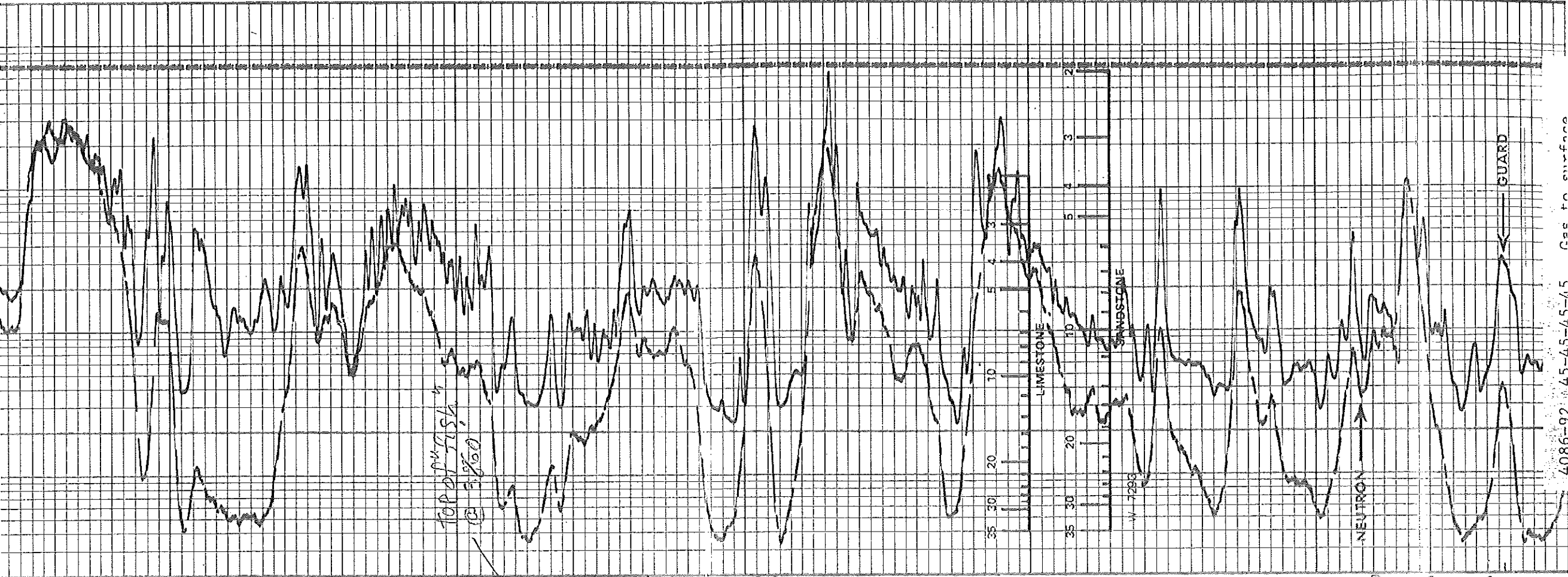
3700

STARTED



-82, 45-45-30-30,
blow, died in 35 min.
60' GC & OSM.
1st 40-40
2nd 54-54
327-109
118 F
Hole 1st. 2 deg.
strap 3' short.

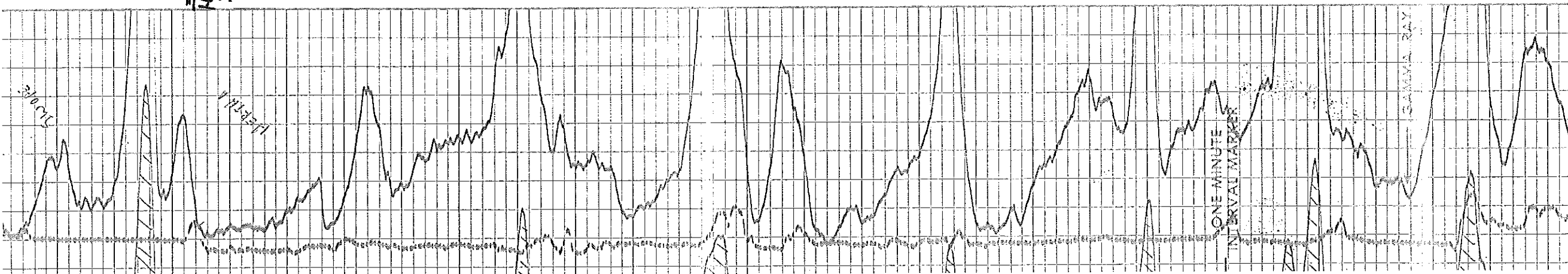




4086-97 45-45-45-75 Gas to surface

380 3900 4000

North
3804
(-2172)

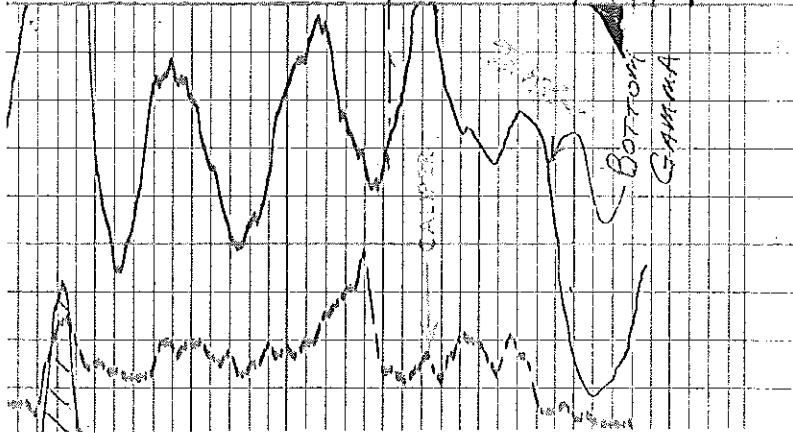


31072

LEATH

ONE MINUTE
INTERVAL MARKER

GAMMA RAY

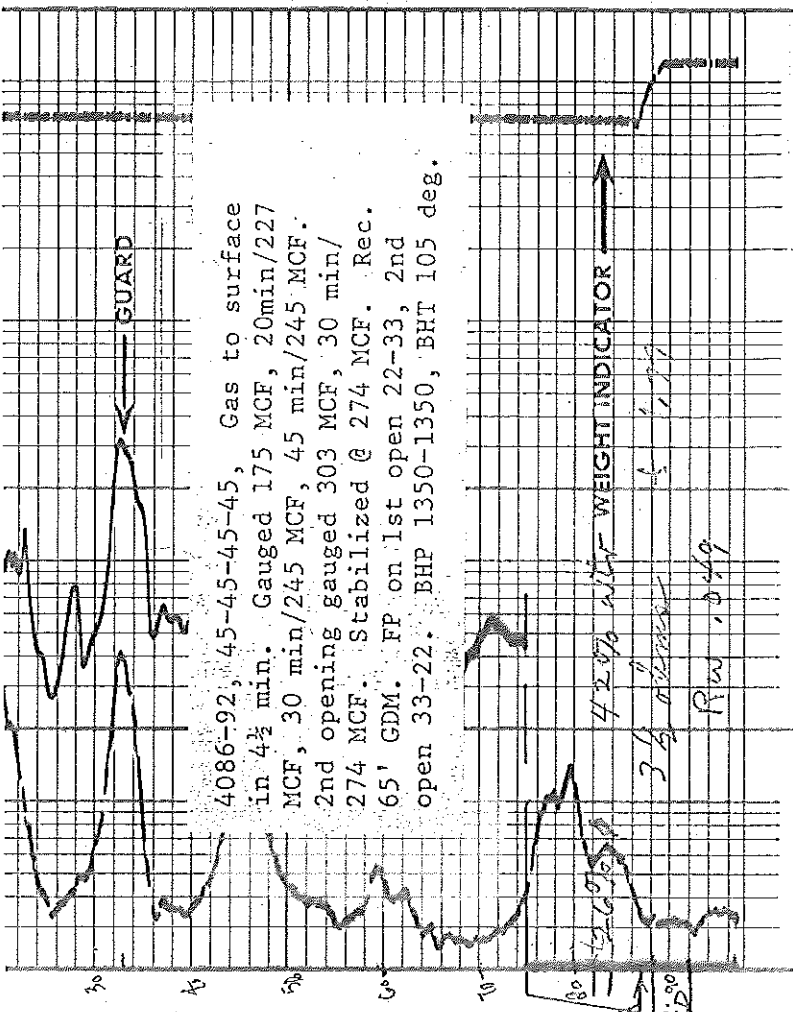


120
360

GAMMA
API Gamma Ray Units

16"

CALIPER
Average Diameter in.



4086-92, 45-45-45, Gas to surface
in 4½ min. Gauged 175 MCF, 20min/227
MCF, 30 min/245 MCF, 45 min/245 MCF.
2nd opening gauged 303 MCF, 30 min/
274 MCF. Stabilized @ 274 MCF. Rec.
65' GDM. FP on 1st open 22-33, 2nd
open 33-22. BHP 1350-1350, BHT 105 deg.

42% wt- WEIGHT INDICATOR
3 1/2 diam
Rw = .049

2000
1000
500
200
100
50
20
10
5
2
1
0.5
0.2

GUARD RESISTIVITY OHMS M²/M

363

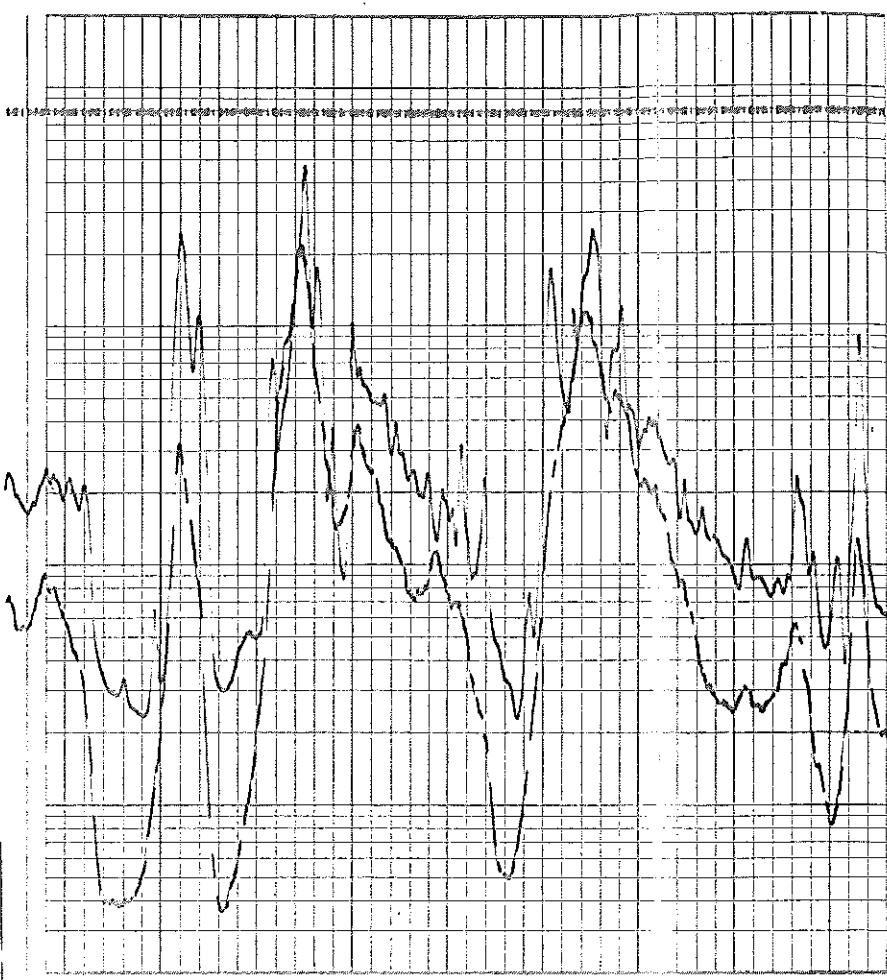
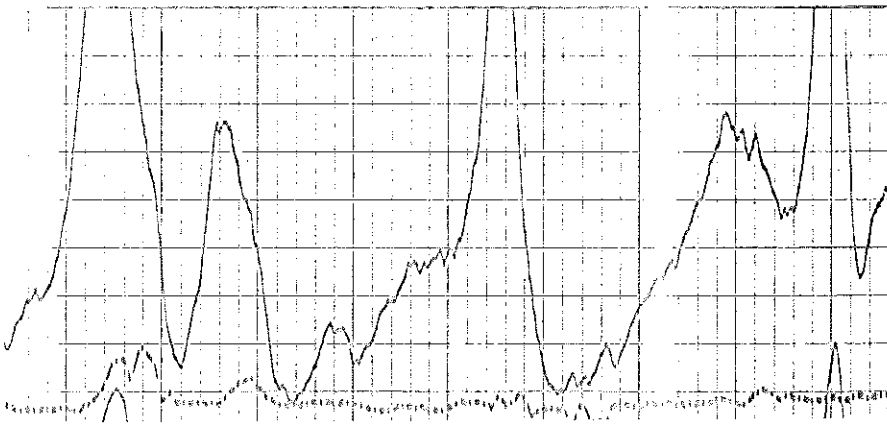
3663

NEUTRON COUNT RATE
API Neutron Units

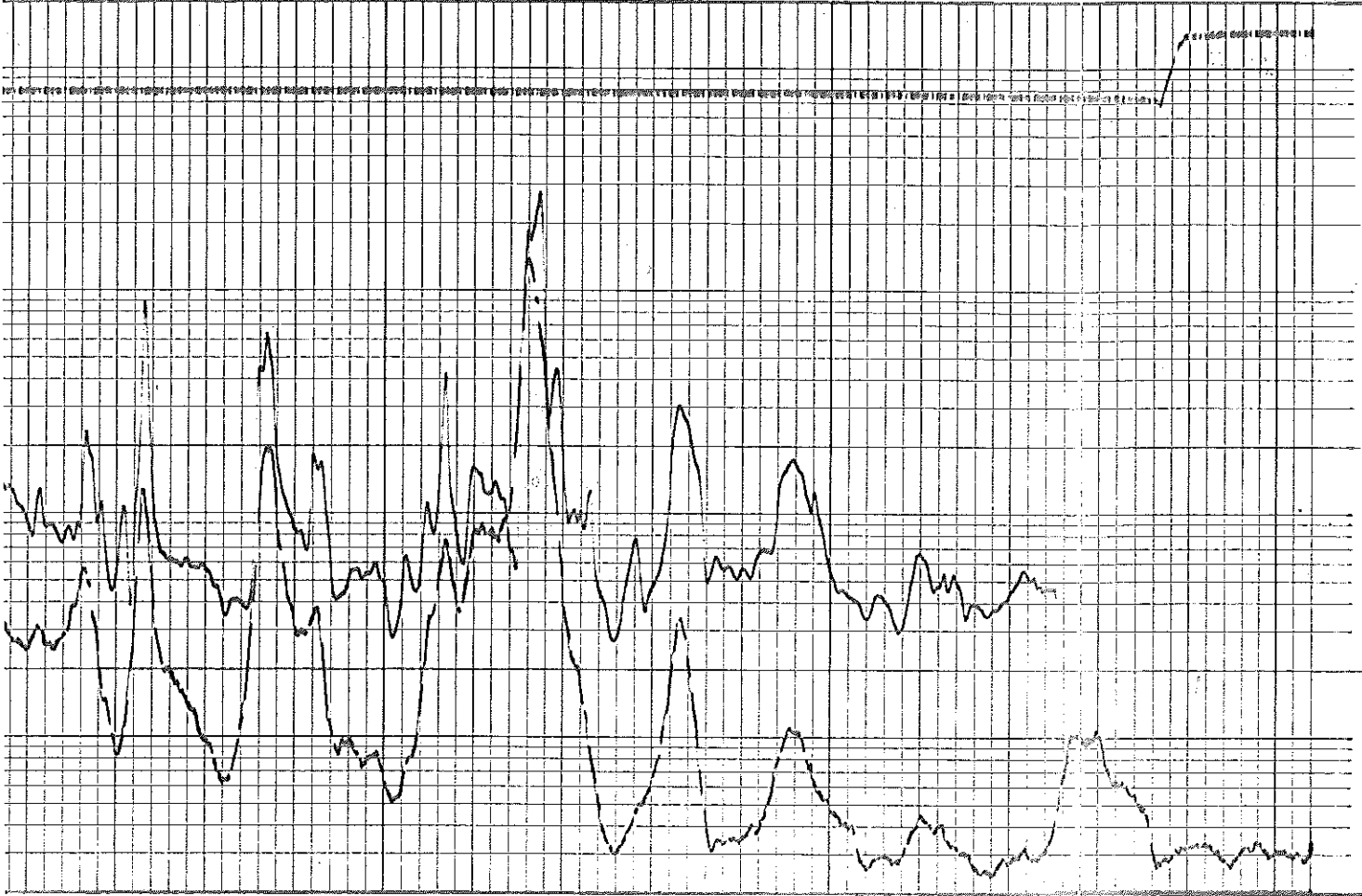
Rw = .05

T.D. LOGGED 4087'
T.D. DRILLER 4092'
T.D. WELEX 4088'

REPEAT SECTION

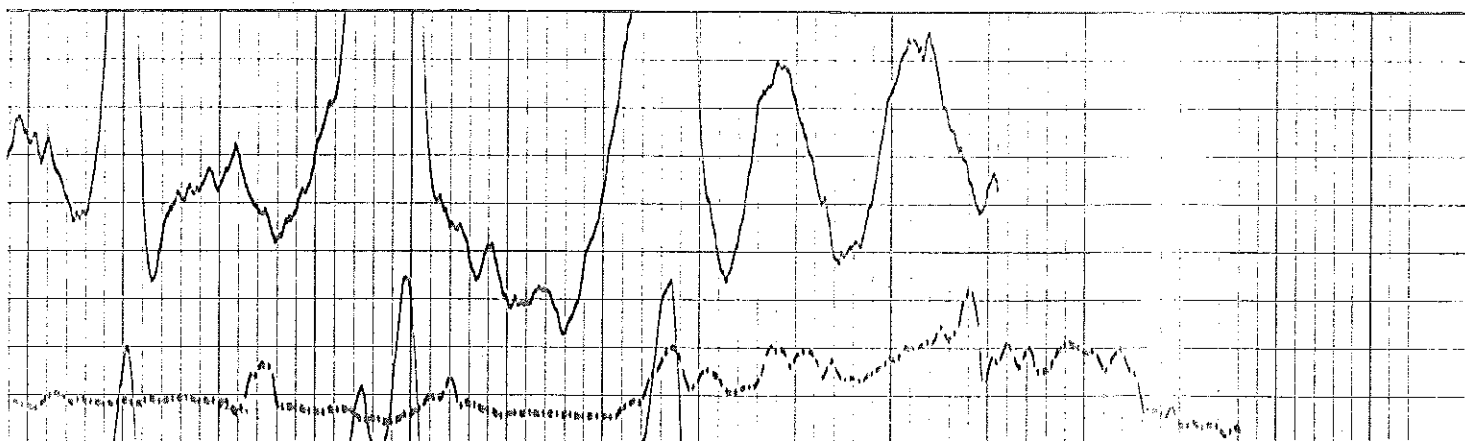


3900

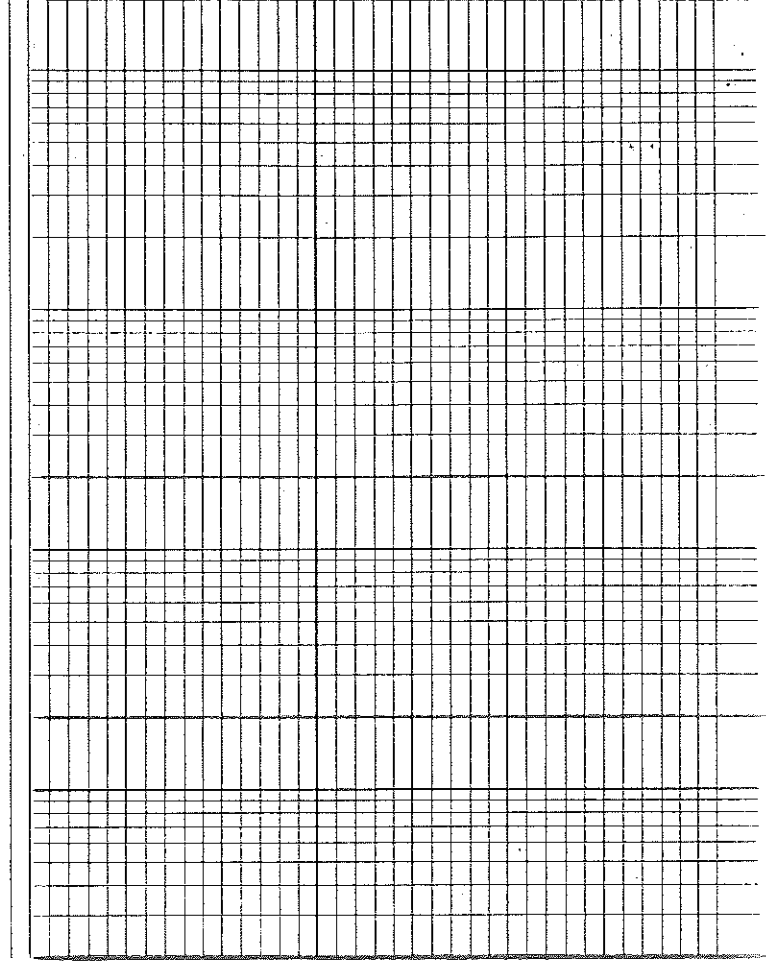


4000

4100



BOTTOM GAMMA

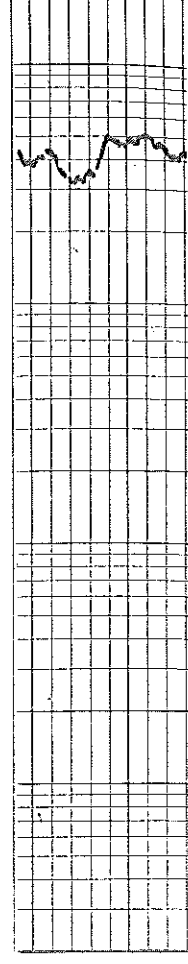


SCORE SURVEY

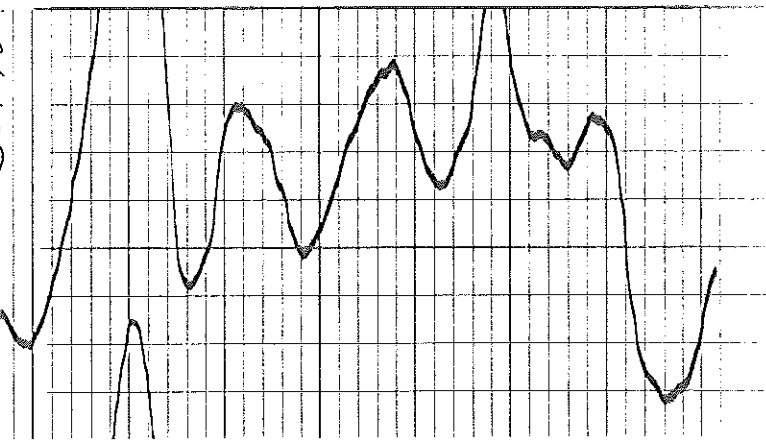
0

2700 API NEUTRON UNITS

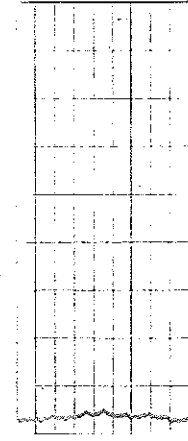
3300



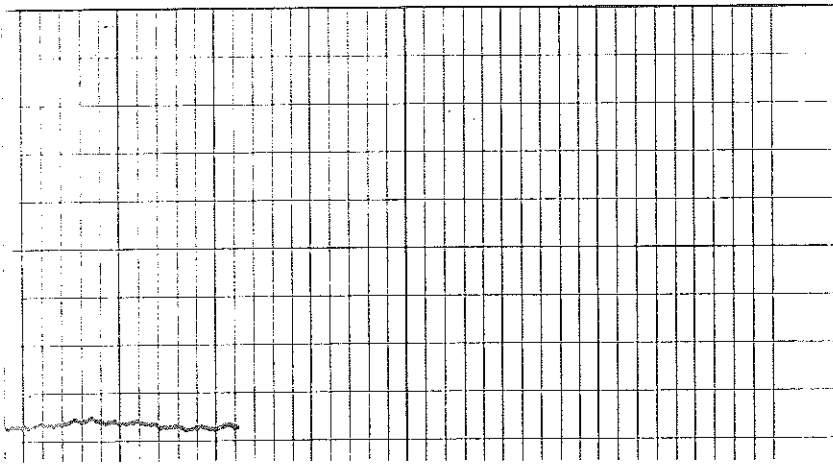
BOTTOM GAMMA



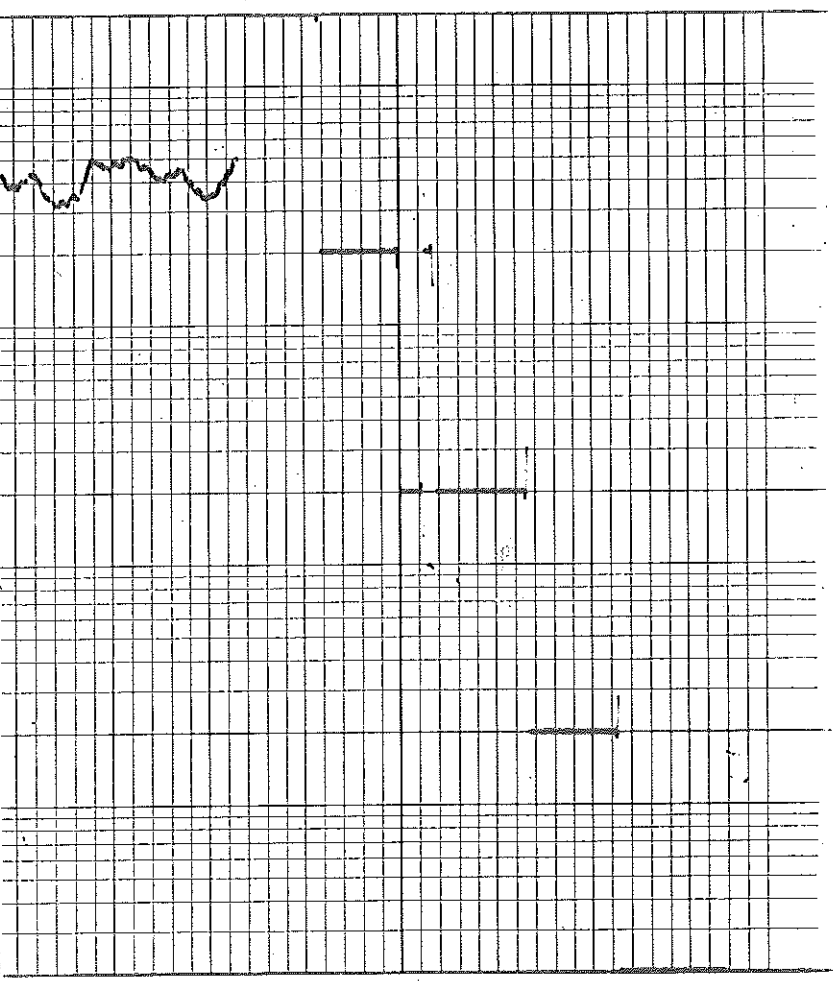
GAMMA BACKGROUND



GAMMA BACKGROUND

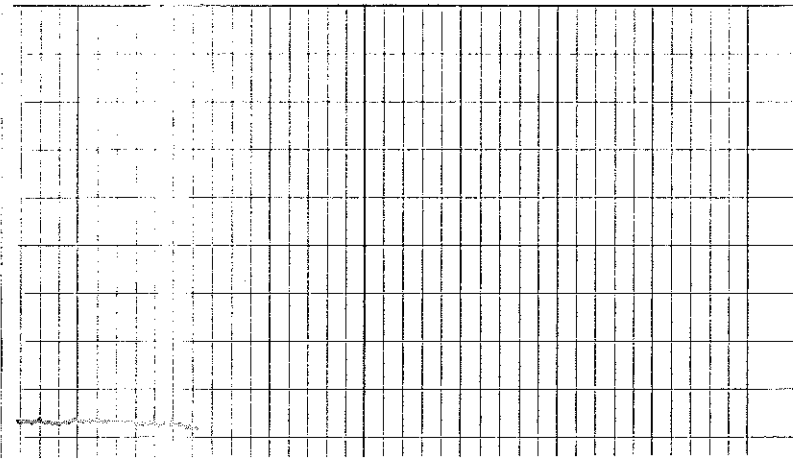


x 100 API NEUTRON UNITS 3300

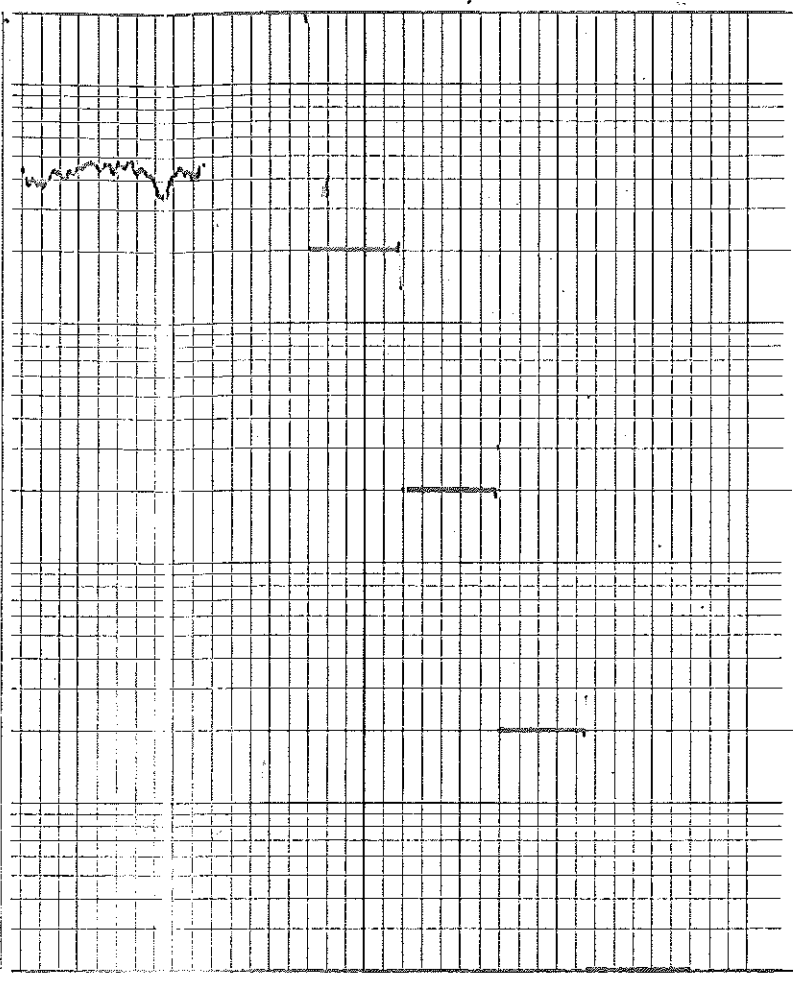


2000 u
200 u
20 u
2 u
.2 u

GAMMA BACKGROUND



AFTER SURVEY 2700 API NEUTRON UNITS 3300



2000 u
200 u
20 u
2 u
.2 u

