

# ADVANTAGE ELEVATIONS

OIL FIELD SURVEYORS

BOX 8604 - PRATT, KS 67124  
(620) 672-6491

617144

INVOICE NO.

MURFIN DRILLING CO.

OPERATOR

1-24

NO.

JTT

FARM

Stafford

COUNTY

24

S

23s

T

12w

R

330' ENL. & 1700' FEL. of Sec.

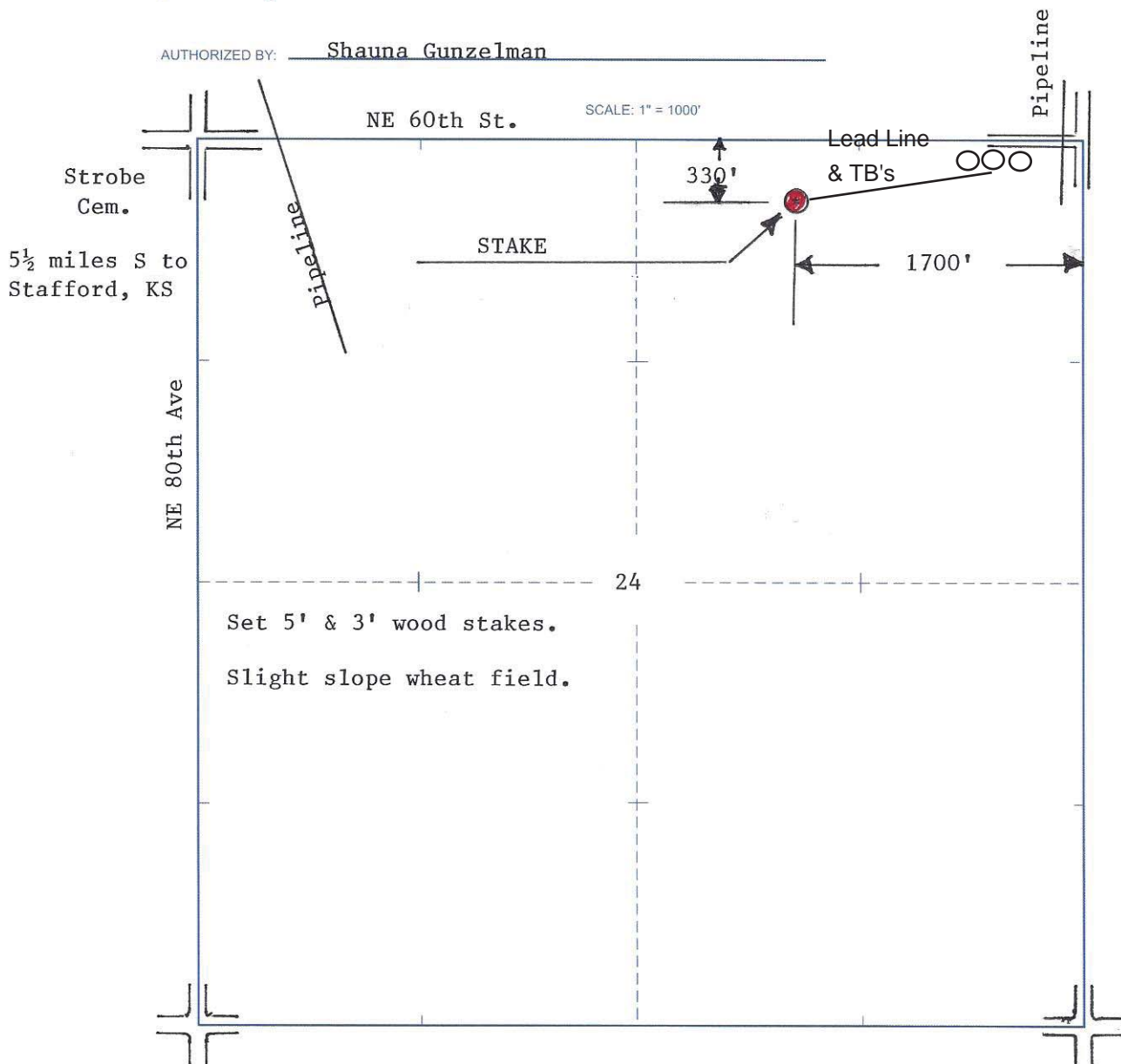
LOCATION

ELEVATION: 1846' GR

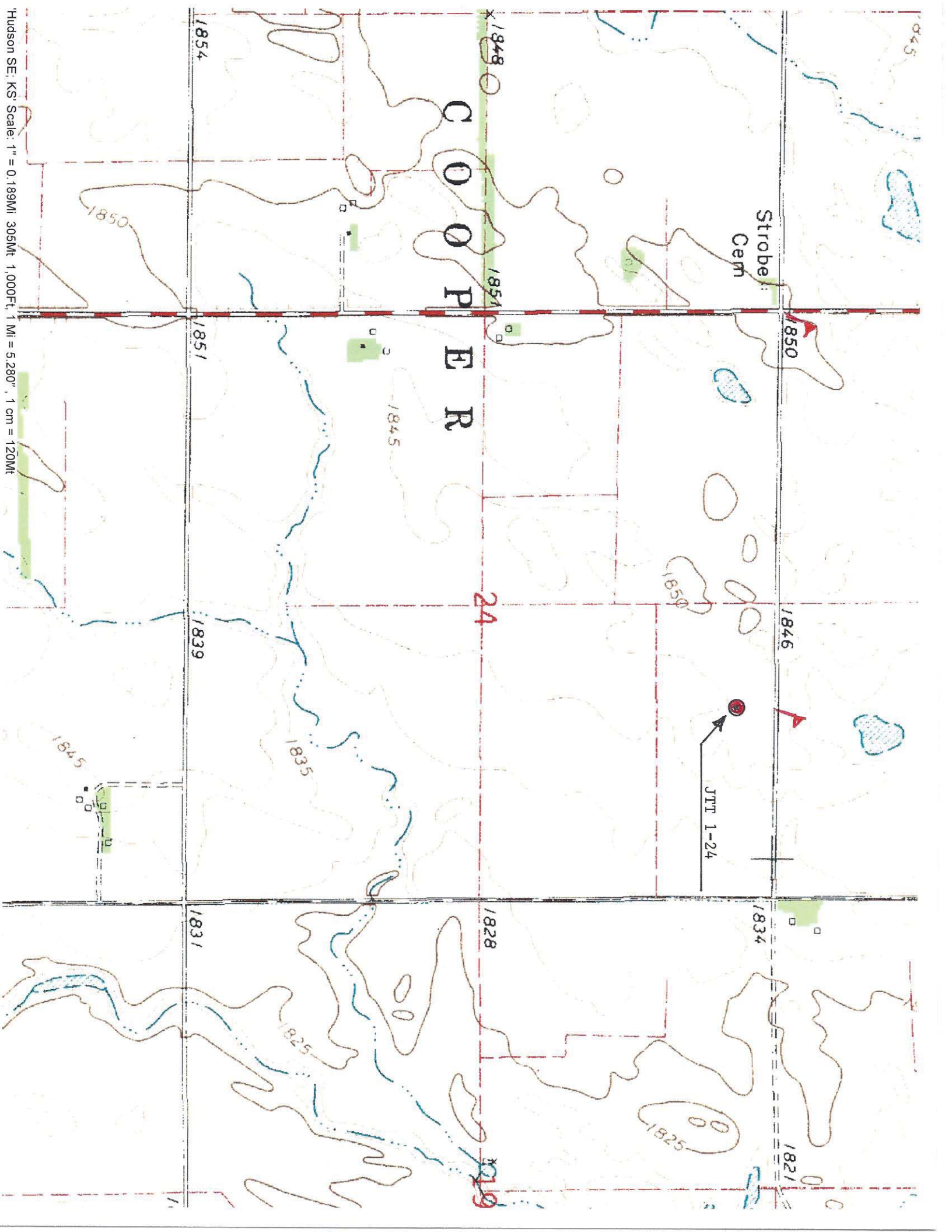


MURFIN DRILLING CO.  
250 N Water St., Ste 300  
Wichita, KS 67202

AUTHORIZED BY: Shauna Gunzelman



DATE STAKED: 6/17/14



COOPER

Strobe Cem

24

JTT 1-24