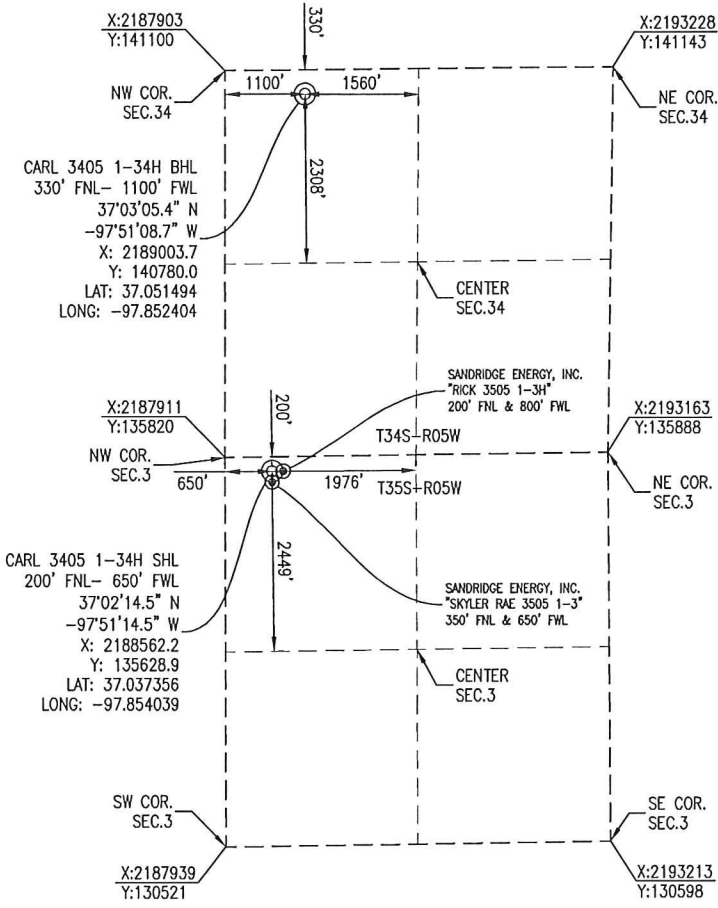


HARPER COUNTY, KANSAS
 200' FNL- 650' FWL SECTION 3 TOWNSHIP 35S RANGE 05W 6TH P.M.



BOTTOM HOLE INFORMATION PROVIDED
 BY OPERATOR LISTED AND CORNER
 COORDINATES ARE TAKEN FROM POINTS
 SURVEYED IN THE FIELD.

ELEVATION:
 1255' GR. AT STAKE

OPERATOR: SANDRIDGE ENERGY, INC. **WELL NO:** 1-34H

LEASE NAME: CARL 3405

TOPOGRAPHIC & VEGETATION: LOCATION FELL IN A FIELD

GOOD DRILL SITE: YES **REFERENCE STAKES OR ALTERNATE LOCATION STAKES SET:** NONE

BEST ACCESSIBILITY TO LOCATION: NORTH OR WEST LINE

DISTANCE & DIRECTION FROM HWY JCT OR TOWN: FROM THE JCT. OF KS-44 & BLUFF CITY RD (±8.6 MILES EAST OF ANTHONY, KS) TRAVEL SOUTH ON BLUFF CITY RD FOR ±8.0 MILES, TURN LEFT (EAST) ON SE 80 RD & TRAVEL ±1.0 MILES TO THE NORTHWEST CORNER OF SECTION 3, T35S-R05W.



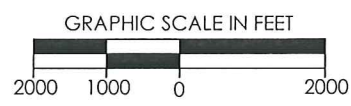
(THE FOLLOWING INFORMATION WAS GATHERED USING A GPS RECEIVER ACCURACY ±2-3 METERS)

GPS DATUM: NAD-27
LAT: 37.037356
LONG: -97.854039

STATE PLANE COORDINATES:
ZONE: KS-SOUTH NAD-27
X: 2188562.2
Y: 135628.9

DATE STAKED: 6-05-2014

GENERAL NOTES:
 THE TIES AND FOOTAGES SHOWN ON THIS PLAT ARE FROM LINES OF OCCUPATION FROM A SURVEY MADE ON THE GROUND AND / OR BEARING AND DISTANCES FROM THE GENERAL LAND OFFICE PLAT OF THE AREA SHOWN AND MAY NOT BE THE ACTUAL PROPERTY CORNERS. THIS PLAT DOES NOT REPRESENT A TRUE BOUNDARY SURVEY. DRILL SITE CONDITION DETERMINATIONS WERE MADE BY SANDRIDGE ENERGY INC. REPRESENTATIVES.



REVISION		SandRidge	
△	MOVED SHL (06-05-2014)	"CARL 3405 1-34H" PART OF THE NW 1/4 OF SECTION 3, T-35-S, R-05-W PROPOSED DRILL SITE HARPER COUNTY, KANSAS	
SCALE: 1" = 2000'		PLOT DATE: 06-06-2014	DRAWN BY: MF SHEET NO.: 1 OF 4

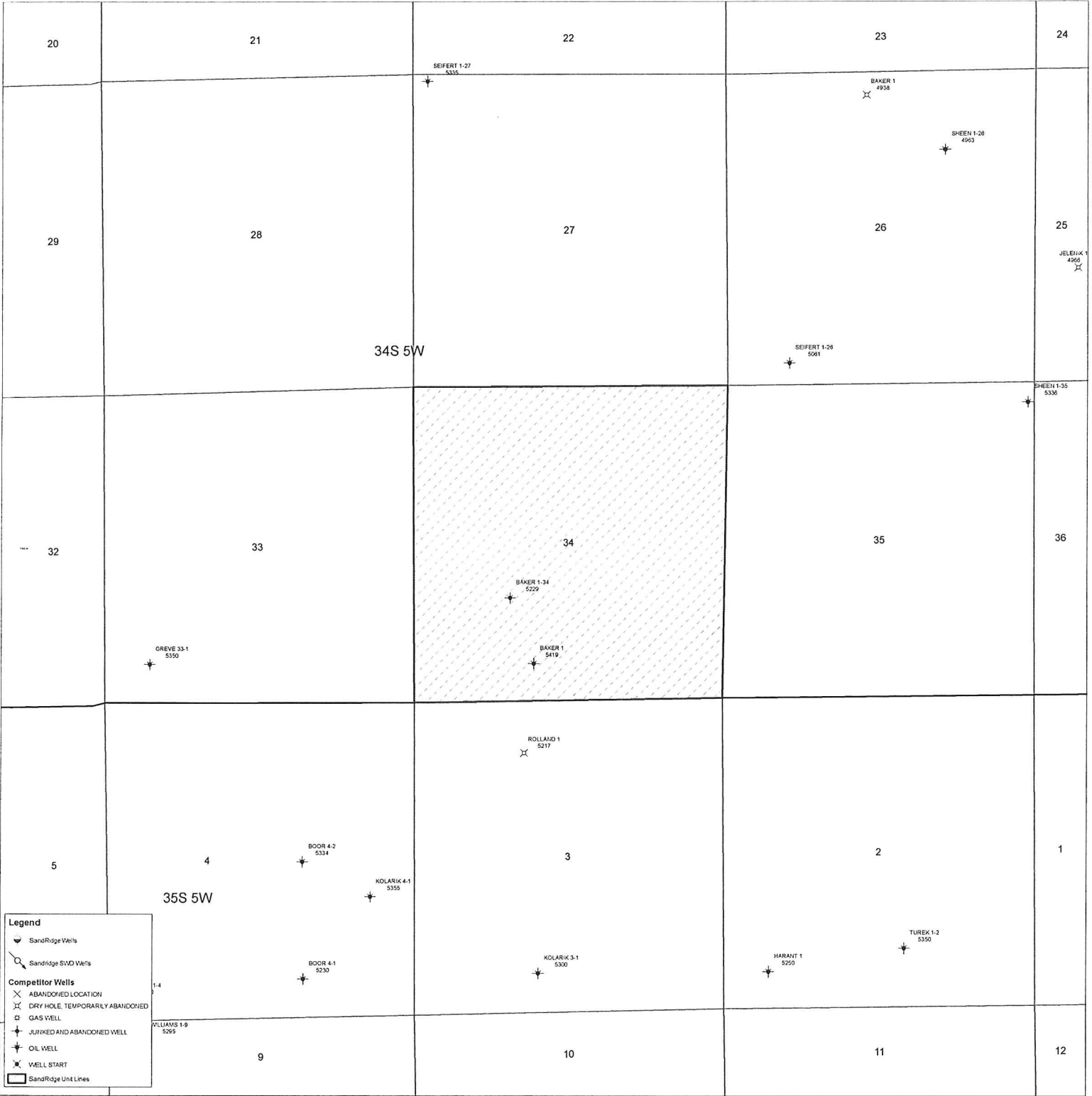
Carl 3405 1-34H
Lease Information Sheet

Unit Description:

All of Section 34-34S-5W
Harper County

Surface Owner:

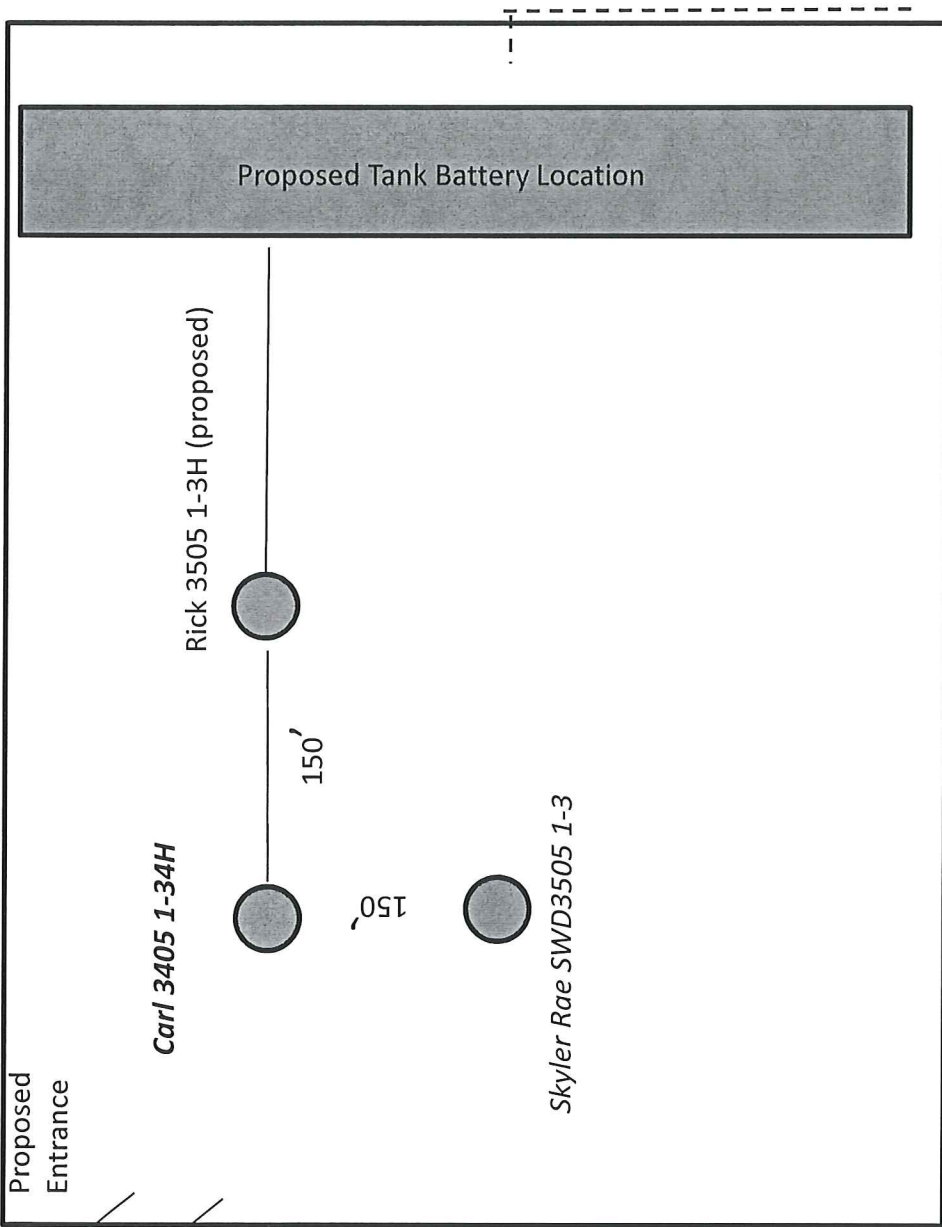
SandRidge Exploration and Production, LLC
123 Robert S Kerr Avenue
Oklahoma City, Oklahoma 73102



Legend

- SandRidge Wells
- SandRidge SVD Wells
- Competitor Wells
- ABANDONED LOCATION
- DRY HOLE, TEMPORARILY ABANDONED
- GAS WELL
- JUNKED AND ABANDONED WELL
- OIL WELL
- WELL START
- SandRidge Unit Lines

Carl 3405 1-34H



Proposed Electric Line