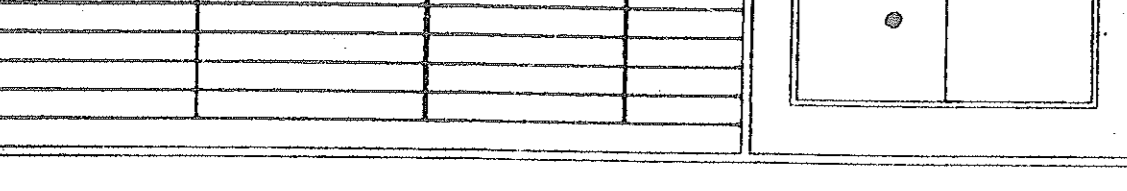


GEOLOGIST'S REPORT
DRILLING TIME AND SAMPLE LOG

OPERATOR CORAL PRODUCTION CORP.
 LEASE GRIEBEL WELL NO. 9-1
 FIELD SE-SW-NE-SW
 LOCATION 1,420' FSL & 1,855' FWL
 SEC. 9 TWP. 7S RGE. 19W
 COUNTY ROOKS STATE KS

CONTRACTOR DISCOVERY DRILLING - RIG #1
 COMM: 5/9/14 COMP: 5/16/2014
 RTD: 3415' LOG TO: 3475'
 SAMPLES SAVED FROM 2900' TO 3475'
 DRILLING TIME KEPT FROM 2,850' TO 3,475'
 SAMPLES EXAMINED FROM 2,900' TO 3,475'
 GEOLOGICAL SUPERVISION FROM 2,900' TO 3,475'
 MUD UP 2,620' TYPE MUD CHEMICAL
 WELL SITE GEOLOGIST RICHARD J. HALL - CPG No. 5820

FORMATION	LOG TOP	DATUM	SAMPLE TOP	STRUCT. COMP.
SC ANHY	1472	+493	1473	NA
TOPEKA	2916	-951	2916	FLAT
HEERMAN SH.	3118	-1153	3120	-2
TORONTO	3142	-1177	3142	-2
LANING	3161	-1196	3160	-2
"H" ZONE	3292	-1327	3293	-2
BKC	3371	-1406	3378	+1
ARBUCKLE	3416	-1451	3417	+4
ARB. POROSITY	3452	-1487	3453	NA

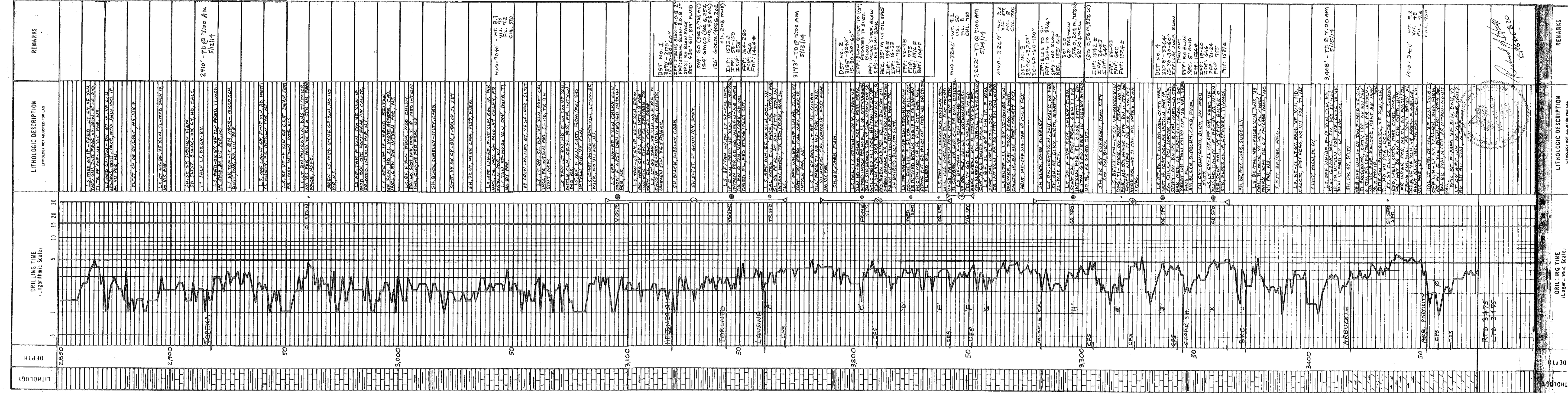


REFERENCE WELL FOR STRUCTURAL COMPARISON TEXAS OIL & GAS CORP., DRYDEN
No. 1, E12-SE-SE-SEC. 8-T7S-R19W, ROOKS CO., KS. KR 1741'

ELEVATION
 KB 1,965'
 DF
 GL 1,957'
 Measurements Are All From KB

CASING RECORD
 SURFACE 8 5/8" @ 263'
 PRODUCTION 5 1/2" @ 3268'

ELECTRICAL SURVEYS
 PIONEER
 - DUAL IND.
 - NEUTRON DENSITY
 - MICROLOG



REMARKS

LITHOLOGIC DESCRIPTION
 LITHOLOG NOT ADJUSTED FOR LOG

DRILLING TIME
 (Logarithmic Scale)

DEPTH
 (Logarithmic Scale)