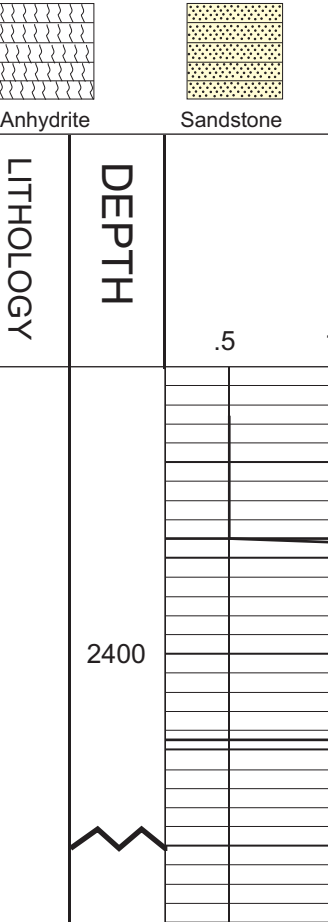


GEOLOGIST'S REPORT
DRILLING TIME AND SAMPLE LOG

COMPANY **SHAKESPEARE OIL CO.** ELEVATIONS
 LEASE **BLUJS-1-32** EL 3066'
 FIELD **Widbeat** DF _____
 LOCATION **3351 FNL, 1440 FWL** GL 3056'
 SEC **32** TWPSP **17S** RGE **33W**
 COUNTY **Scott** STATE **Kansas** Measurements Are All From **KB**
 CONTRACTOR **HD Rig #2** From **KB**
 SPUD **4-28-14** COMP _____
 RTD **3490'** LTD **3** CASING _____
 MUD UP **3490'** TYPE MUD **Chemical** CONDUCTOR **N/A**
 SAMPLES SAVED FROM **3800'** to RTD SURFACE **8-5/8" @ 268'**
 DRILLING TIME KEPT FROM **3800'** to RTD PRODUCTION **5 1/2 @ 1**
 SAMPLES EXAMINED FROM **3800'** to RTD ELECTRICAL SURVEYS
 GEOLOGICAL SUPERVISION FROM **3900'** to RTD CND/D/SP/P/E
 GEOLOGIST ON WELL **Tim Priest** Micro
 By: **Weatherford**

FORMATION TOPS ELECTRIC LOG SAMPLE
 Anhydrite
 Heebner Shale
 Lansing
 Stark
 B/K.C.
 Fort Scott
 Cherokee Shale
 Mississippian



REMARKS
 Respectfully Submitted,
 Tim Priest
 Petroleum Geologist

API #15-171-21051-00-00

