



TRILOBITE TESTING, INC

DRILL STEM TEST REPORT

Shakespeare Oil Co. Inc.

14-16s-34w-Scott CO, KS

202 W. Main St.
Salem, IL 62881

Radnor #2-14

Job Ticket: 56537

DST#: 3

ATTN: Wes Hansen

Test Start: 2014.05.22 @ 05:10:00

GENERAL INFORMATION:

Formation: **Myric Station-Ft. Sc**

Deviated: No Whipstock: ft (KB)

Time Tool Opened: 08:20:45

Time Test Ended: 12:59:45

Test Type: Conventional Bottom Hole (Reset)

Tester: Cornelio Landa III

Unit No: 65

Interval: 4550.00 ft (KB) To 4611.00 ft (KB) (TVD)

Reference Elevations: 3129.00 ft (KB)

Total Depth: 4611.00 ft (KB) (TVD)

3117.00 ft (CF)

Hole Diameter: 7.88 inches Hole Condition: Good

KB to GR/CF: 12.00 ft

Serial #: 8737 Outside

Press@RunDepth: 50.51 psig @ 4554.00 ft (KB)

Capacity: 8000.00 psig

Start Date: 2014.05.22 End Date: 2014.05.22

Last Calib.: 2014.05.22

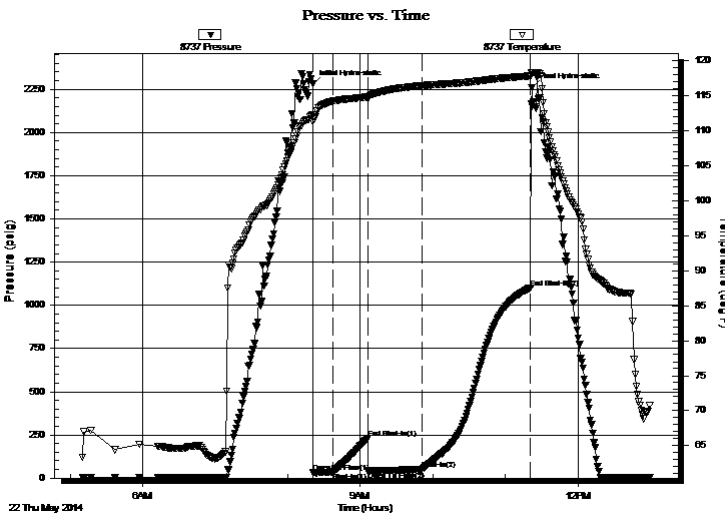
Start Time: 05:10:15 End Time: 12:59:45

Time On Btm: 2014.05.22 @ 08:20:30

Time Off Btm: 2014.05.22 @ 11:21:45

TEST COMMENT: IF: B.o.b. in 9 min.
IS: Bled off in 3 min.-No return
FF: Surface Blow -Built to 7 1/2 in.-Died back to 7 in.
FS: Bled off in 2 min.- No return

PRESSURE SUMMARY



| Time (Min.) | Pressure (psig) | Temp (deg F) | Annotation |
|-------------|-----------------|--------------|----------------------|
| 0 | 2279.50 | 112.21 | Initial Hydro-static |
| 1 | 31.09 | 111.31 | Open To Flow (1) |
| 17 | 36.05 | 114.22 | Shut-In(1) |
| 46 | 230.85 | 114.81 | End Shut-In(1) |
| 46 | 40.00 | 114.81 | Open To Flow (2) |
| 91 | 50.51 | 116.44 | Shut-In(2) |
| 181 | 1101.34 | 117.81 | End Shut-In(2) |
| 182 | 2259.80 | 118.25 | Final Hydro-static |

Recovery

| Length (ft) | Description | Volume (bbl) |
|-------------|---------------------|--------------|
| 0.00 | GIP=504 | 0.00 |
| 63.00 | O&Gcm 20o 40g 40m | 0.88 |
| 63.00 | G & Ocm 20g 20o 60m | 0.88 |
| | | |
| | | |

* Recovery from multiple tests

Gas Rates

| | Choke (inches) | Pressure (psig) | Gas Rate (MMcf/d) |
|--|----------------|-----------------|-------------------|
| | | | |



**TRILOBITE
TESTING, INC**

DRILL STEM TEST REPORT

FLUID SUMMARY

Shakespeare Oil Co. Inc.

14-16s-34w-Scott CO, KS

202 W. Main St.
Salem, IL 62881

Radnor #2-14

Job Ticket: 56537

DST#: 3

ATTN: Wes Hansen

Test Start: 2014.05.22 @ 05:10:00

Mud and Cushion Information

Mud Type: Gel Chem

Cushion Type:

Oil API:

deg API

Mud Weight: 9.00 lb/gal

Cushion Length:

ft

Water Salinity:

ppm

Viscosity: 53.00 sec/qt

Cushion Volume:

bbbl

Water Loss: 10.36 in³

Gas Cushion Type:

Resistivity: 0.00 ohm.m

Gas Cushion Pressure:

psig

Salinity: 10000.00 ppm

Filter Cake: 1.00 inches

Recovery Information

Recovery Table

| Length ft | Description | Volume bbl |
|--------------|---------------------|---------------|
| 0.00 | GIP=504 | 0.000 |
| 63.00 | O&Gcm 20o 40g 40m | 0.884 |
| 63.00 | G & Ocm 20g 20o 60m | 0.884 |

Total Length: 126.00 ft

Total Volume: 1.768 bbl

Num Fluid Samples: 0

Num Gas Bombs: 0

Serial #:

Laboratory Name:

Laboratory Location:

Recovery Comments:

Serial #: 8737

Outside Shakespeare Oil Co. Inc.

Radnor #2-14

DST Test Number: 3

