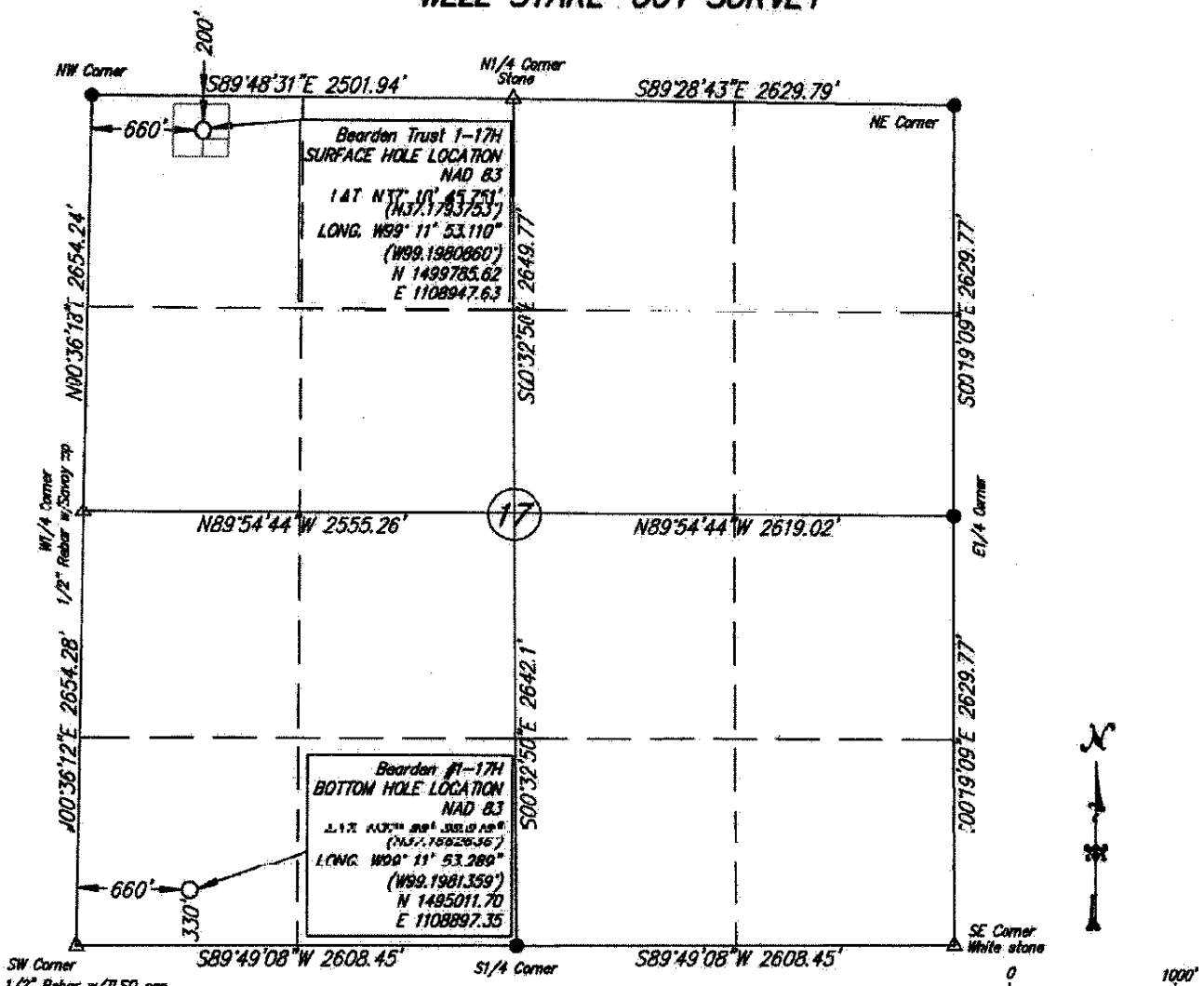


WELL STAKE-OUT SURVEY



SW Corner
1/2" Rebar w/ILSO cap
Lease Name: Bearden Trust
Well No. 1-17H
Surface Hole Elevation at Stake: 1886.09 NAVD88

Well Location Co./State: Comanche County, Kansas
Well Location Section: 17-1335-R1/W

Alternate Datums:

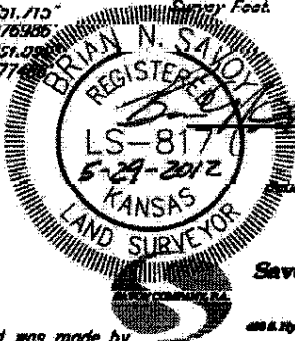
	Horz. Datum NAD 87	
Bearden Trust #1-17H Surface Hole	Lat. N37°10'43.639"	Long. W89°11'51.710"
	N37.1793496	W89.1976905
Bearden Trust #1-17H Bottom Hole	Lat. N37°10'50.450"	Long. W89°11'51.090"
	N37.1662378	W89.1977688

SURVEY DATUMS (shown on drawing)
Horizontal Datum NAD83 (CORSS96)
Vertical Datum NAD83 (CORSS96)
Kansas SPCS South Zone (US Feet)

State of Kansas)
) SS
Sedgwick County)

This is to certify that this map or plat and the survey on which it is based was made by me or under my direct supervision and that, to the best of my knowledge and belief, this is a true and correct exhibit of said survey. The well shown hereon was staked May 29, 2012 at the coordinate location noted.

● = 1/2" rebar with Savoy cap, set
△ = monument found as noted
Bearings shown on this survey are Grid bearings based on NAD 83 Kansas SPCS South Zone. Distances are in US Survey Feet.



Brian N. Savoy, RLS #817
This survey is valid only if print bears Surveyor's seal, signed in blue ink.

Savoy Company, P.A.
Local Surveyors
608 S. 10th Street, Suite 101, Wichita, KS 67202

POE & ASSOCIATES, INC.
CONSULTING ENGINEERS
5040 E. Central, Suite 200
Phone 316/685-4114 Wichita, KS 67208-4242 FAX 316/685-4444

NOI APPLICATION- BEARDEN TRUST 1-17H

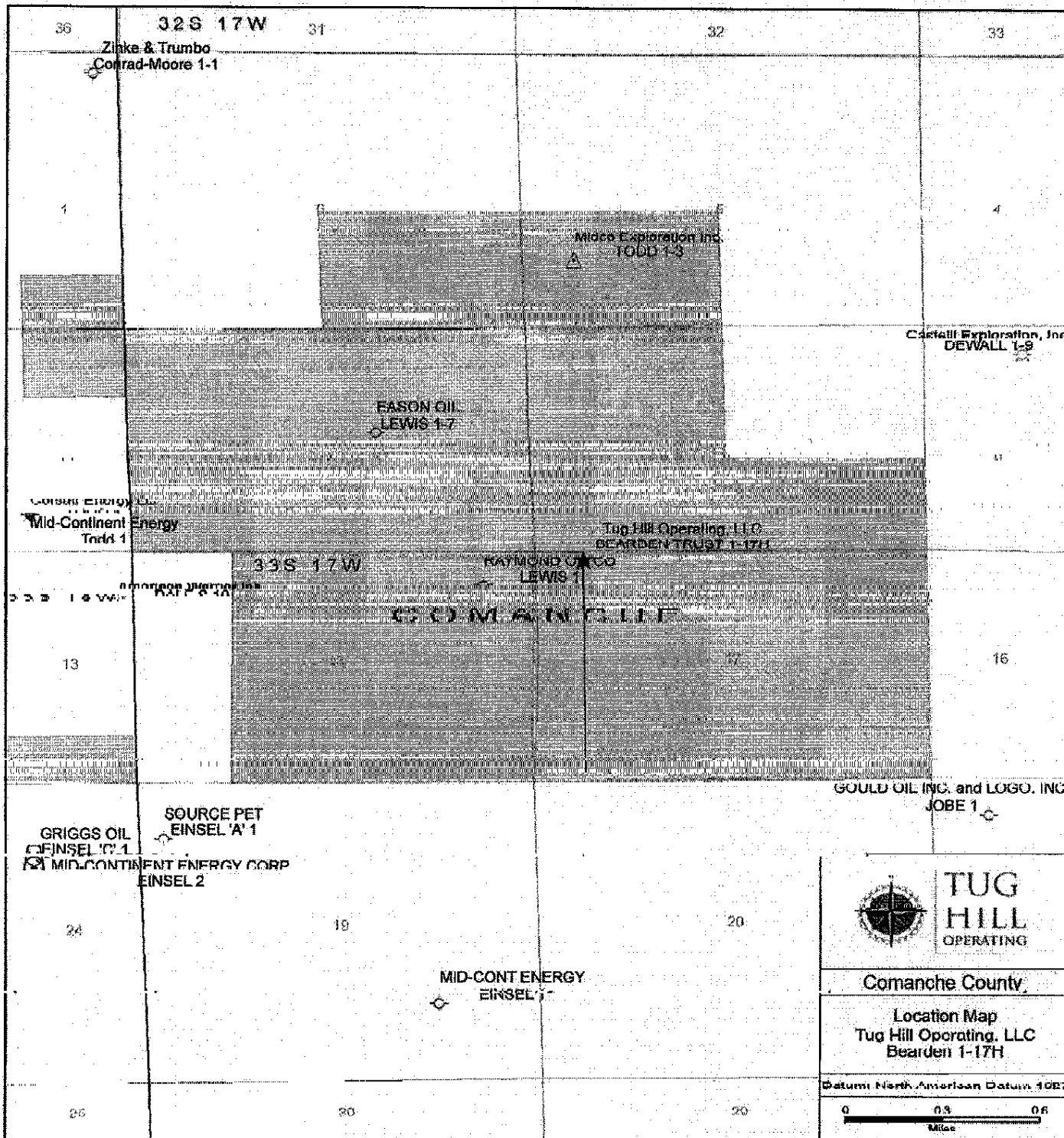
Lease Information Lease #1:

County Comanche
Lessor John G Arnold Jr
Lessee Cheyenne Exploration LLC
Lease Date 11/2/2011
Recording Information Bk 119/ Pg 645
Legal Description T33S R17W Sec 17: ALL

Lease Information Lease #2:

County Comanche
Lessor Patti G Bearden Revocable Trust
Lessee Cheyenne Exploration LLC
Lease Date 11/2/2011
Recording Information Bk 119/ Pg 647
Legal Description T33S R17W Sec 17: ALL

Unitization: None



TUG HILL OPERATING

Comanche County

Location Map
Tug Hill Operating, LLC
Bearden 1-17H

Datum: North American Datum 1983

0 0.3 0.6
Miles