

Company **MIKE KELSO OIL**
 Well **ESFELD #6**
 Field
 County **BARTON** State **KANSAS**

Location **NE - NW - SW**
 SEC. **20** TWP. **16** RGE. **11W**
 Permanent Datum **GROUND LEVEL** Elevation **1869**
 Log Measured From **GROUND LEVEL**
 Drilling Measured From **GROUND LEVEL**
 Other Services
 Elevation
 K.B. 1869
 D.F.
 G.L. 1869

Date	5-8-2012						
Run Number	ONE						
Depth Driller	3694						
Depth Logger	3583						
Bottom Logged Interval	3582						
Top Log Interval							
Open Hole Size							
Type Fluid	WATER						
Density / Viscosity							
Max. Recorded Temp.							
Estimated Cement Top							
Time Well Ready							
Time Logger on Bottom							
Equipment Number	53						
Location	GREAT BEND						
Recorded By	LANCE GREGG						
Witnessed By	MIKE KELSO						
Borehole Record		Tubing Record					
Run Number	Bit	From	To	Size	Weight	From	To
Casing Record	Size	Mq/ft		Top	Bottom		
Surface String							
Prot. String	6			0	3309		
Production String				0	3428		
Liner	4.5						

<<< Fold Here >>>

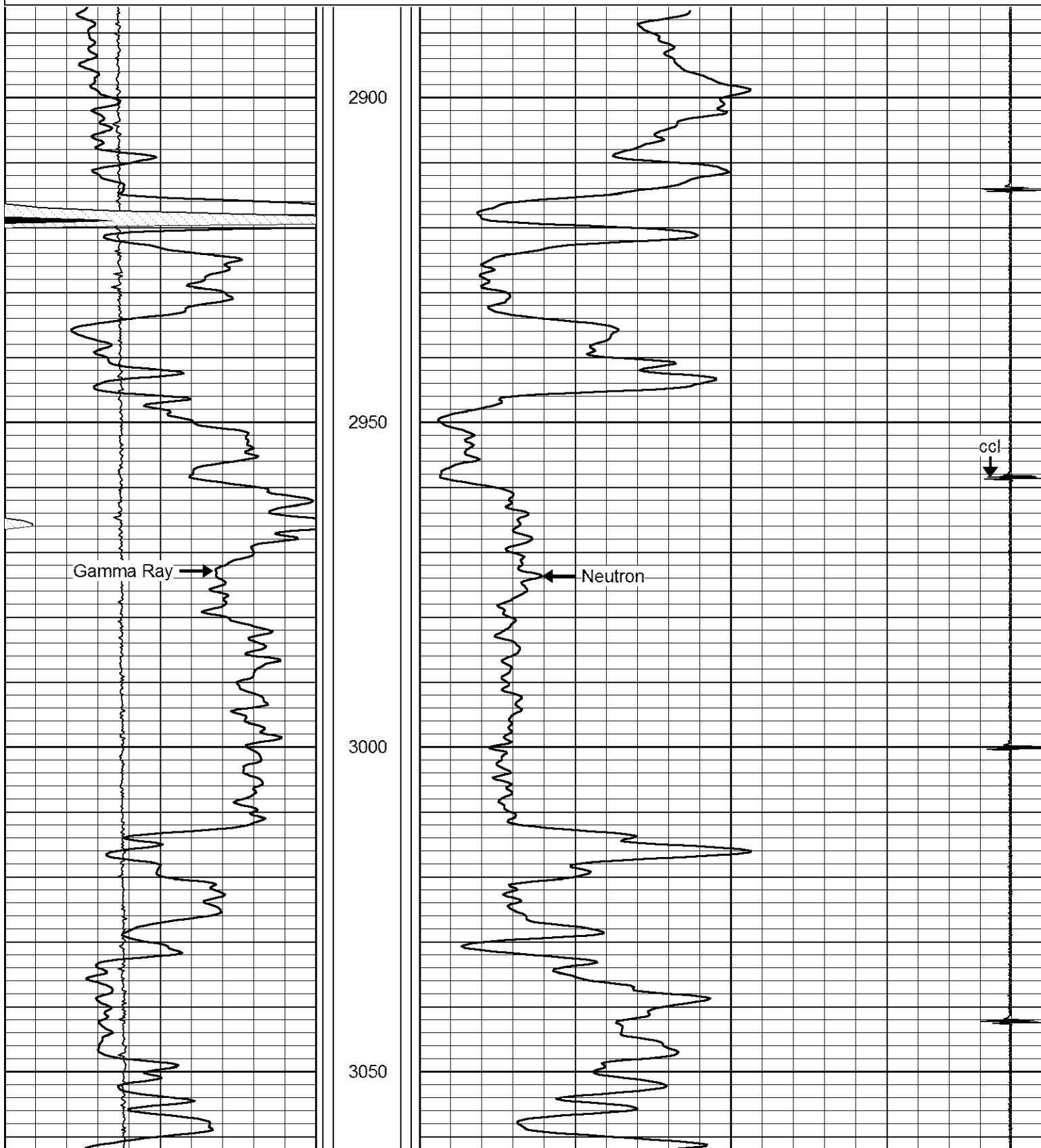
All interpretations are opinions based on inferences from electrical or other measurements and we cannot and do not guarantee the accuracy or correctness of any interpretation, and we shall not, except in the case of gross or willful negligence on our part, be liable or responsible for any loss, costs, damages, or expenses incurred or sustained by anyone resulting from any interpretation made by any of our officers, agents or employees. These interpretations are also subject to our general terms and conditions set out in our current Price Schedule.

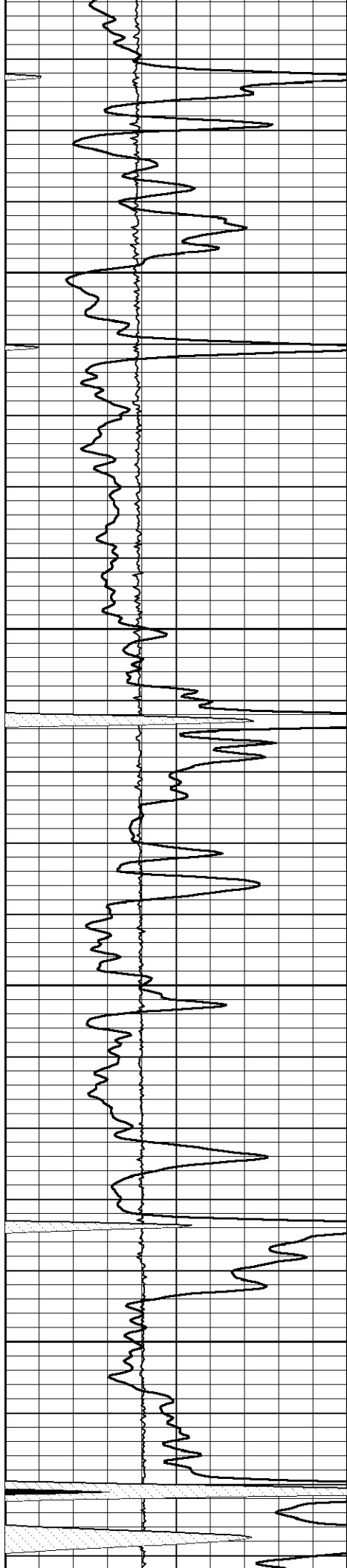
Comments

THANK YOU FOR USING LOG TECH OF KANSAS

Database File: esfeld.db
 Dataset Pathname: pass3
 Presentation Format: gr-n-ccl
 Dataset Creation: Tue May 08 16:53:29 2012 by Log 6.1
 Charted by: Depth in Feet scaled 1:240

0	GR (GAPI)	150	260	NEUTRON (cps)	1200
0	LTEN (lb)	1500		9	ccl
150	GR (GAPI)	300			
300	GR (GAPI)	450			



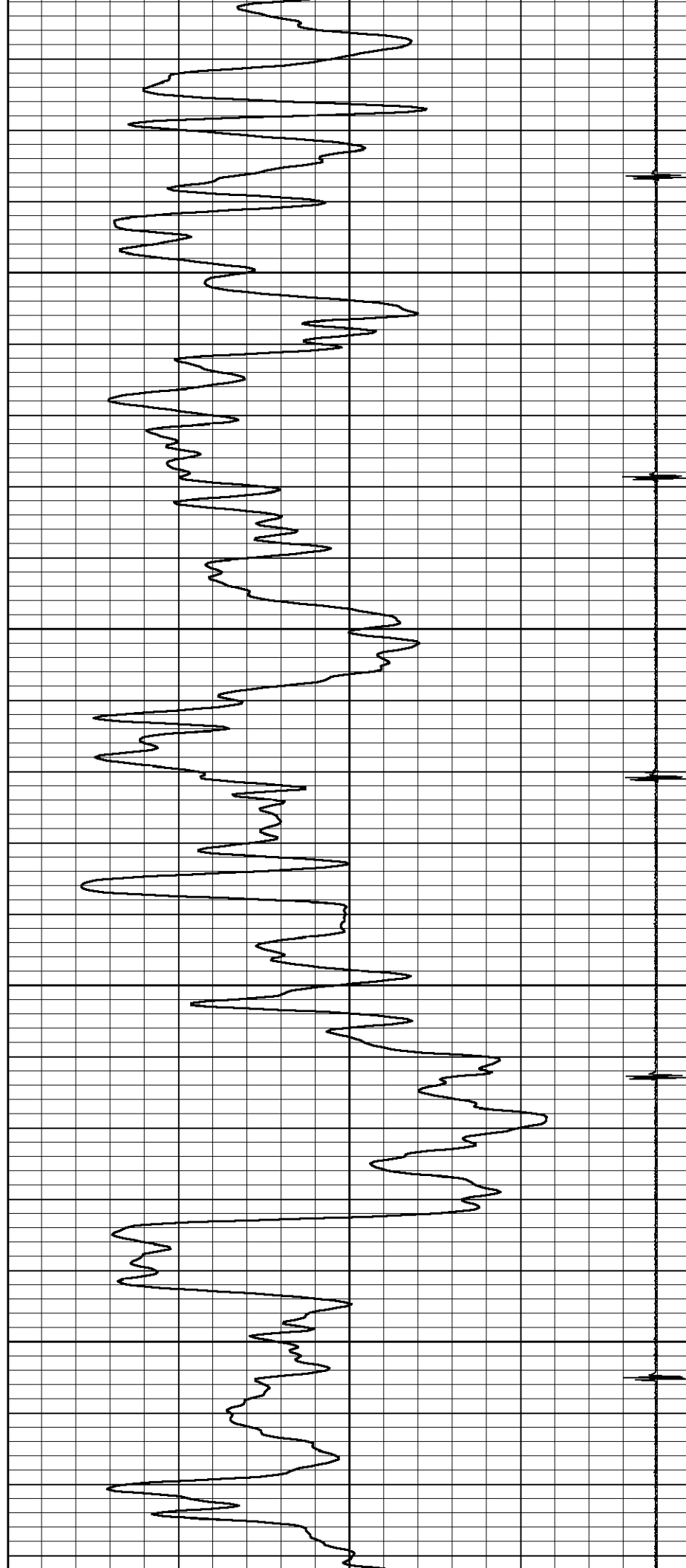


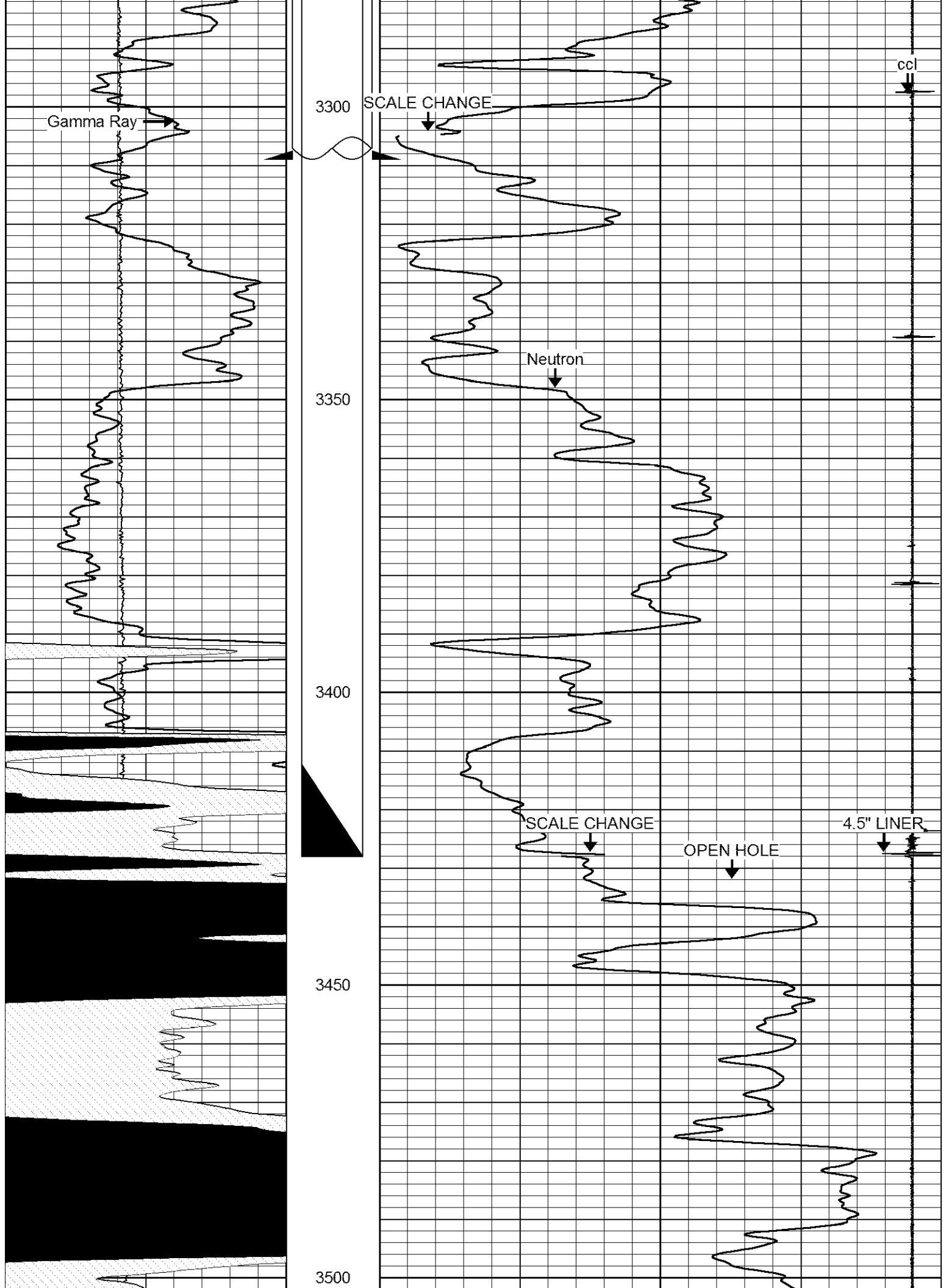
3100

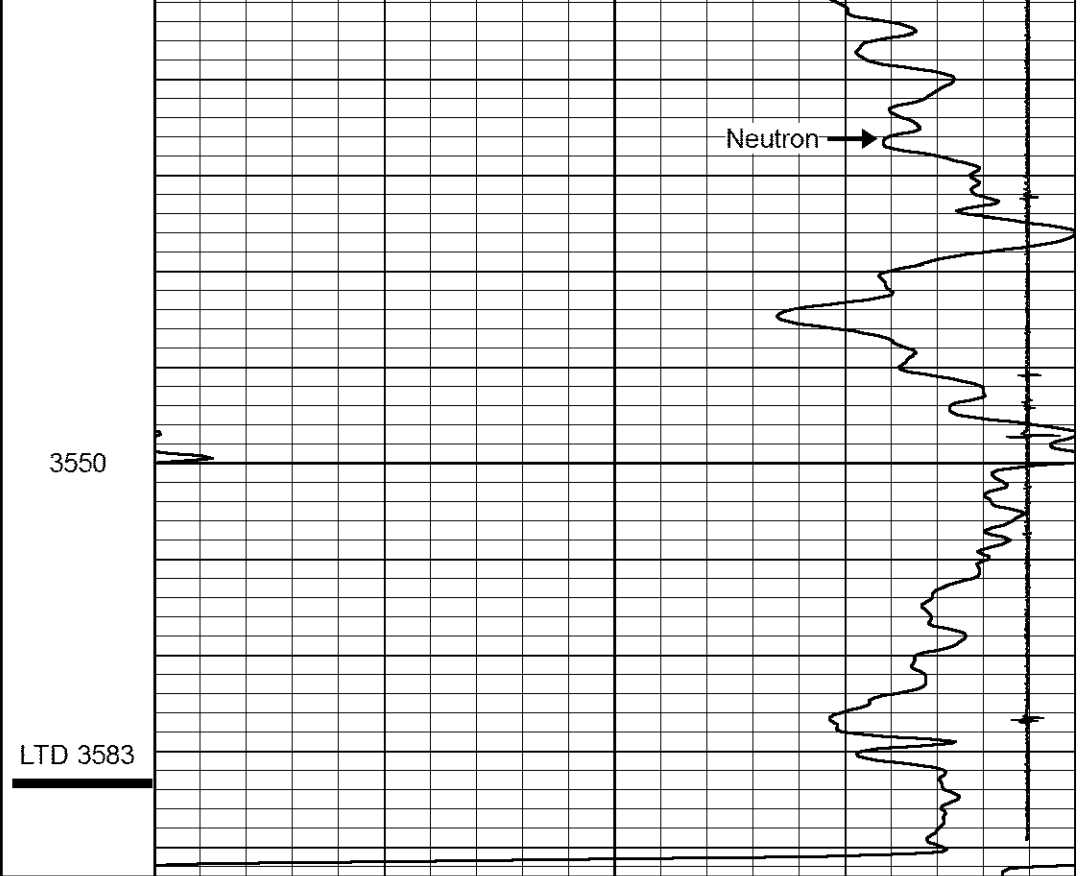
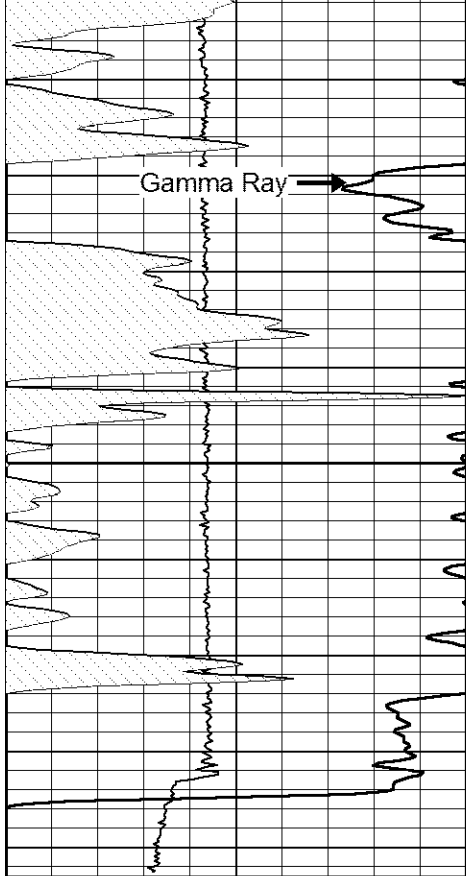
3150

3200

3250







3550

LTD 3583

0	GR (GAPI)	150
0	LTEN (lb)	1500
150	GR (GAPI)	300
300	GR (GAPI)	450

260 NEUTRON (cps) 3500

9 ccl -1



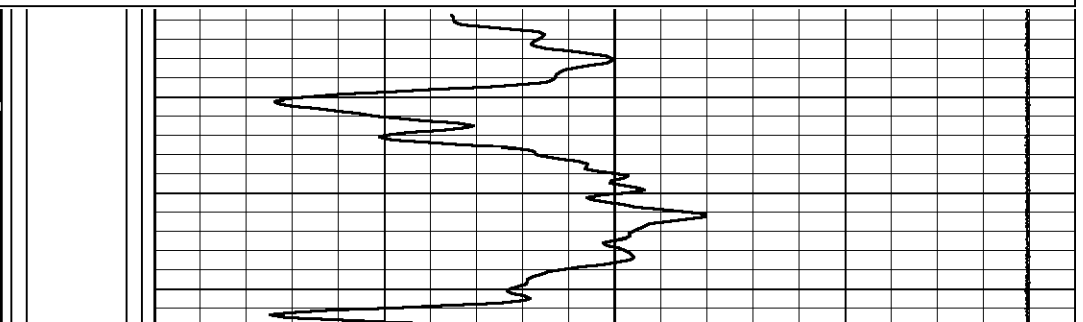
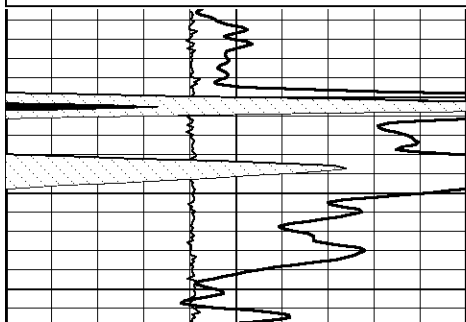
REPEAT SECTION

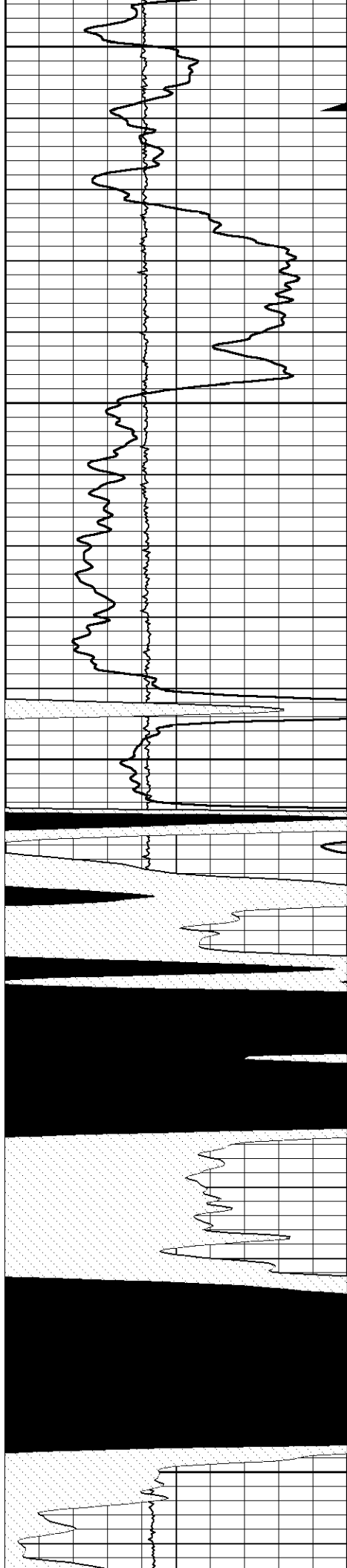
Database File: esfeld.db
 Dataset Pathname: pass4
 Presentation Format: gr-n-ccl
 Dataset Creation: Tue May 08 17:22:57 2012 by Log 6.1
 Charted by: Depth in Feet scaled 1:240

0	GR (GAPI)	150
0	LTEN (lb)	1500
150	GR (GAPI)	300
300	GR (GAPI)	450

260 NEUTRON (cps) 1200

9 ccl -1





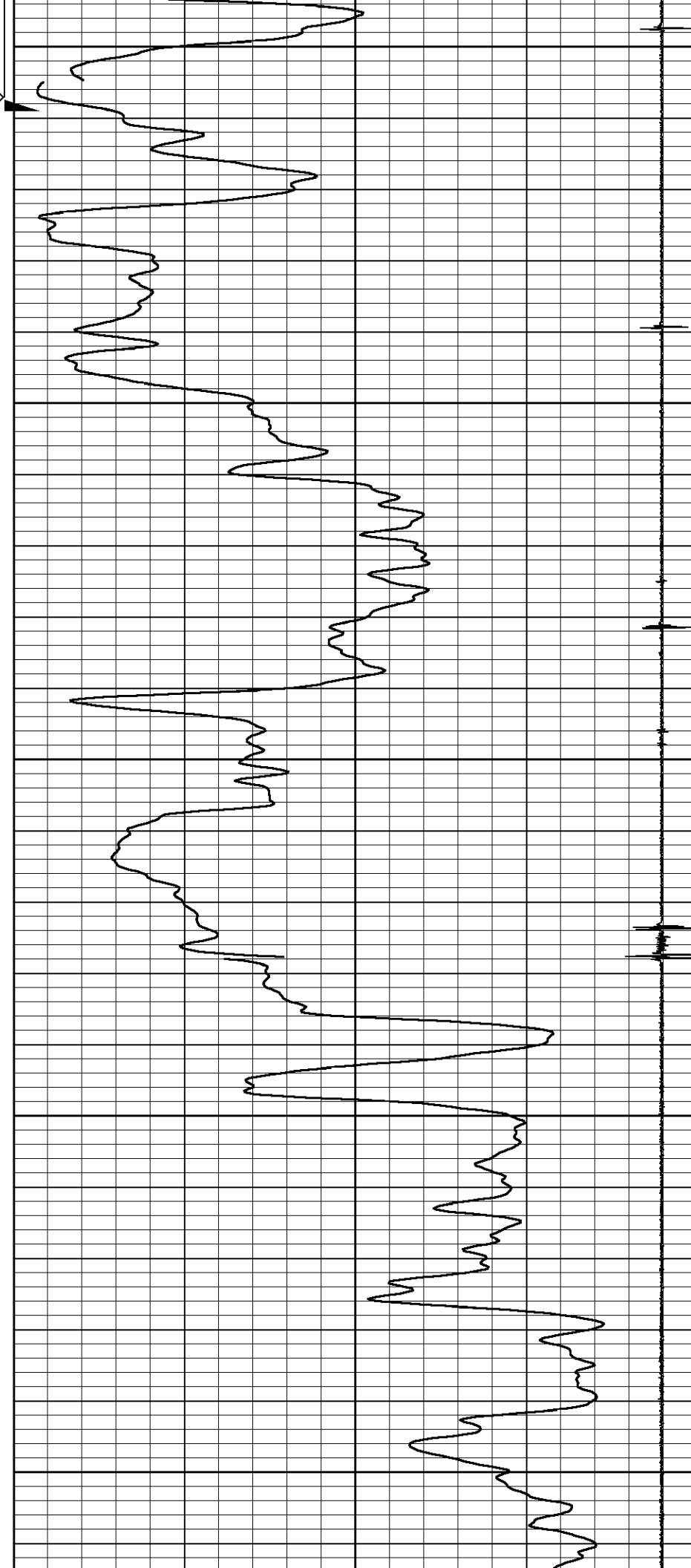
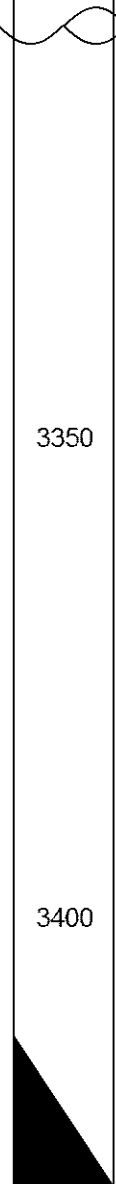
3300

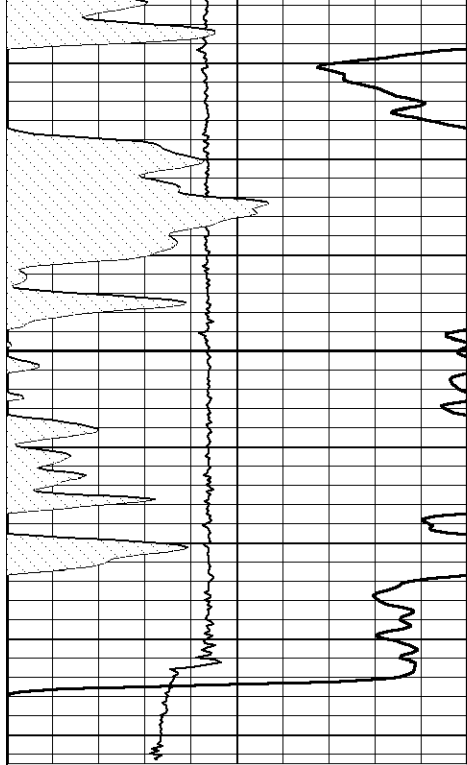
3350

3400

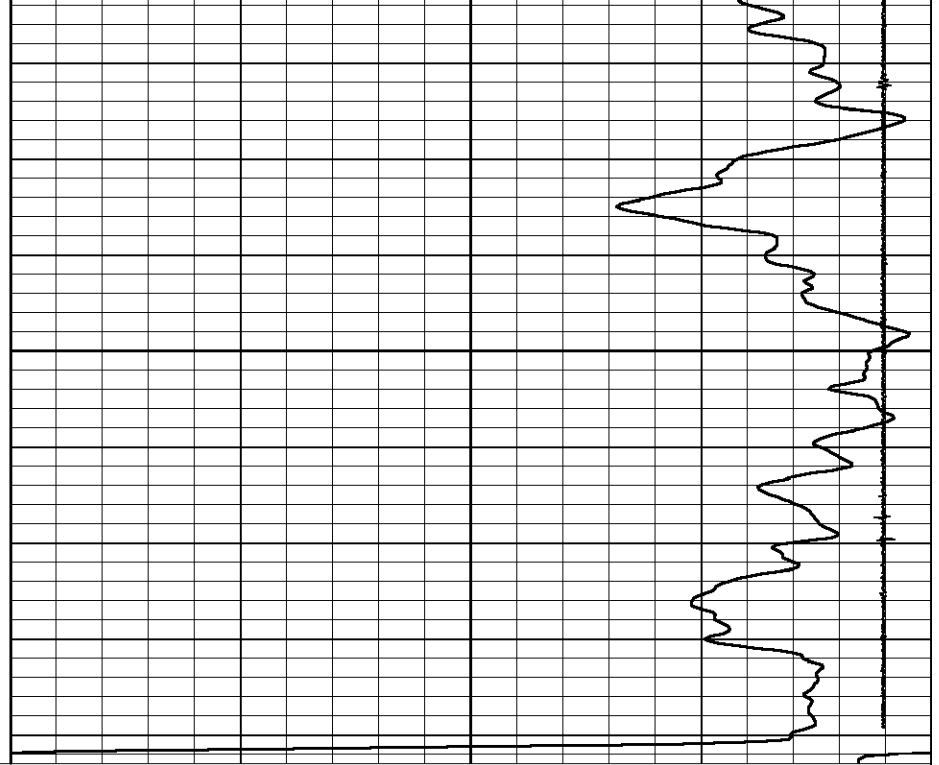
3450

3500





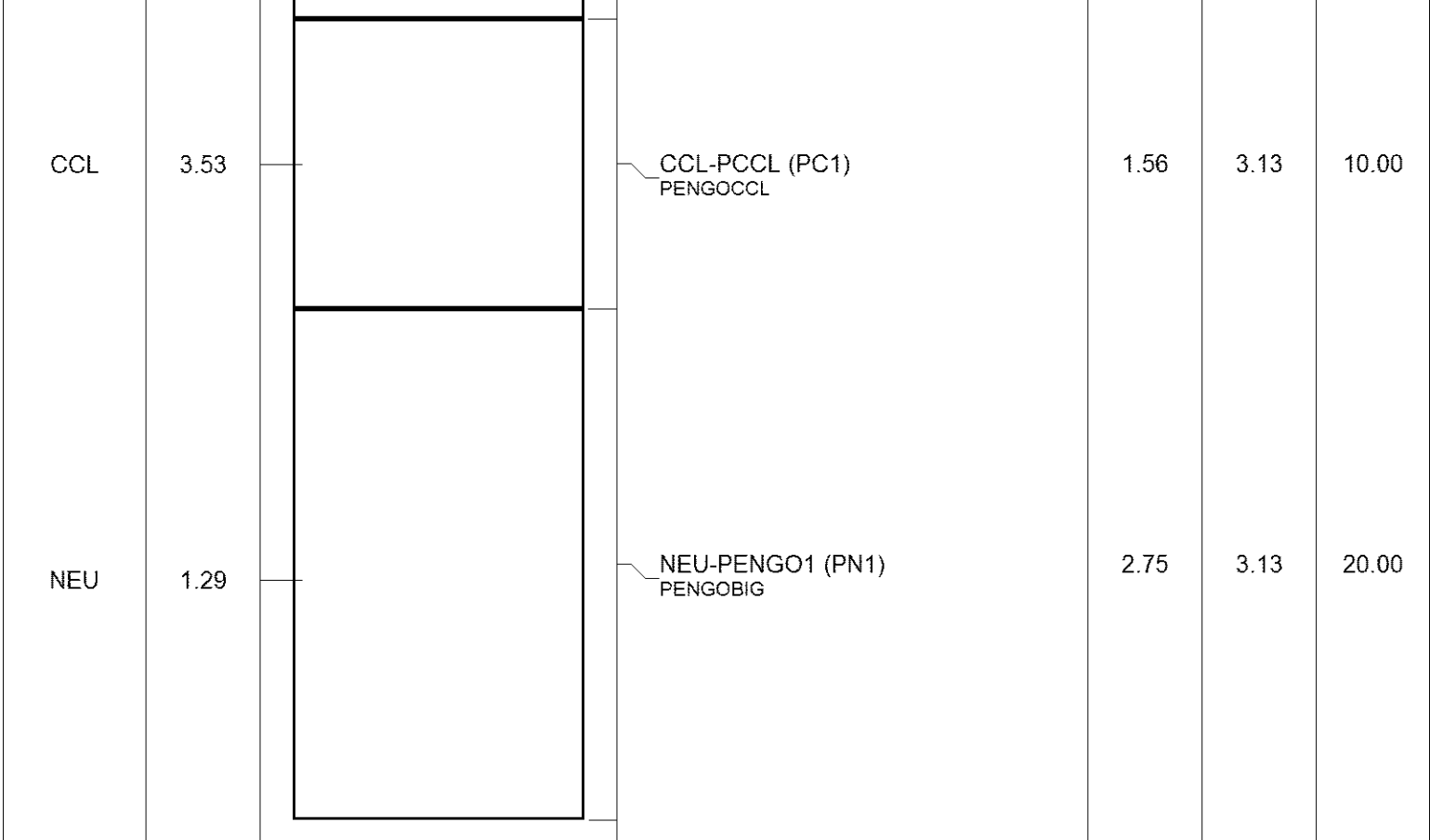
3550



0	GR (GAPI)	150
0	LTEN (lb)	1500
150	GR (GAPI)	300
300	GR (GAPI)	450

260	NEUTRON (cps)	3500
9	ccl	-1

Sensor	Offset (ft)	Schematic	Description	Len (ft)	OD (in)	Wt (lb)
			CHD-STNDRD (1) Standard Cable Head	1.00	1.44	10.00
GR	7.73		GR-pgr1 (pgr01) pengobiggr	4.13	3.13	30.00



Dataset: esfeld.db: field/well/run1/pass4
 Total Length: 9.44 ft
 Total Weight: 70.00 lb
 O.D.: 3.13 in