

# **Geological Report**

American Warrior, Inc.

**Elmer's #2-19**

1360' FNL & 1029' FEL

Sec. 19 T17s R21w

Ness County, Kansas



**American Warrior, Inc.**

## General Data

Well Data: American Warrior, Inc.  
Elmer's #2-19  
1360' FNL & 1029' FEL  
Sec. 19 T17s R21w  
Ness County, Kansas  
API # 15-135-25760-0000

Drilling Contractor: Petromark Drilling, LLC. Rig #1

Geologist: Jason T Alm

Spud Date: May 14, 2014

Completion Date: May 21, 2014

Elevation: 2253' Ground Level  
2259' Kelly Bushing

Directions: Bazine KS, at the intersection of Hwy 96 and  
Austin St. North 8 mi. to 210 Rd. East ¼ mi. South  
into location.

Casing: 221' 8 5/8" surface casing

Samples: 10' wet and dry, 3900' to RTD

Drilling Time: 3700' to RTD

Electric Logs: None

Drillstem Tests: One, Trilobite Testing, Inc. "Jace McKinney"

Problems: None

Remarks: None

## Formation Tops

<b>Formation</b>	<b>American Warrior, Inc.</b>
	Elmer's #2-19
	Sec. 19 T17s R21w
	1360' FNL & 1029' FEL
Anhydrite	<b>1560', +699</b>
Base	<b>1594', +665</b>
Heebner	<b>3722', -1463</b>
Lansing	<b>3766', -1507</b>
BKc	<b>4038', -1779</b>
Pawnee	<b>4146', -1887</b>
Fort Scott	<b>4224', -1965</b>
Cherokee	<b>4239', -1980</b>
Mississippian	<b>4312', -2053</b>
Osage	<b>4326', -2067</b>
RTD	<b>4346', -2087</b>

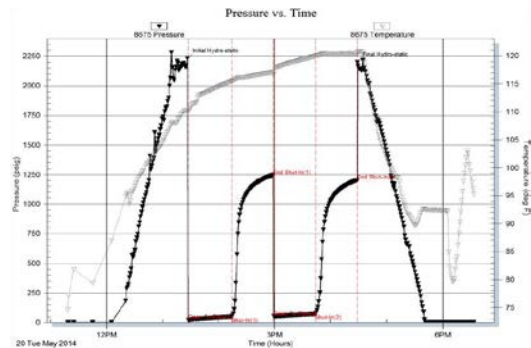
## Sample Zone Descriptions

**Mississippian Osage (4326', -2067):**      **Covered in DST #1**  
 Dolo – Δ – Fine sucrosic crystalline with poor inter-crystalline and vuggy porosity, chert, mostly fresh with scattered poor to fair vuggy porosity, scattered light oil stain, no show of free oil, light odor, very dull yellow fluorescents, 10-21 units hotwire.

**Drill Stem Tests**  
Trilobite Testing, Inc.  
"Jace McKinney"

**DST #1      Mississippian Osage**

Interval (4334' – 4346') Anchor Length 12'  
 IHP – 2228 #  
 IFP – 45" – Built to 2 ¼" in.      20-48 #  
 ISI – 45" – Dead      1245 #  
 FFP – 45" – Built to 1 ¼" in.      51-72 #  
 FSI – 45" – Dead      1202 #  
 FHP – 2197 #  
 BHT – 121°F



Recovery:      10' MCWO      40% Oil, 40% Water  
                   58' MCW      60% Water w/ oil scum  
                   58' MCW      90% Water w/ oil scum

**Structural Comparison**

	American Warrior, Inc. Elmer's #2-19 Sec. 19 T17s R21w 1360' FNL & 1029' FEL	Leben Oil Corp. Wolfe #1 Sec. 19 T17s R21w 4620' FSL & 660' FEL		American Warrior, Inc. Elmer's #1-19 Sec. 19 T17s R21w 550' FNL & 1920' FEL	
<b>Formation</b>					
Anhydrite	<b>1560', +699</b>	1548', +705	<b>(+6)</b>	1572', +701	<b>(-2)</b>
Base	<b>1594', +665</b>	1584', +669	<b>(+4)</b>	1607', +666	<b>(-1)</b>
Heebner	<b>3722', -1463</b>	3714', -1461	<b>(+2)</b>	3735', -1462	<b>(-1)</b>
Lansing	<b>3766', -1507</b>	3758', -1505	<b>(+2)</b>	3779', -1506	<b>(-1)</b>
BKc	<b>4038', -1779</b>	NA	<b>NA</b>	4051', -1778	<b>(-1)</b>
Pawnee	<b>4146', -1887</b>	NA	<b>NA</b>	4155', -1882	<b>(-5)</b>
Fort Scott	<b>4224', -1965</b>	4218', -1965	<b>FL</b>	4233', -1960	<b>(-5)</b>
Cherokee	<b>4239', -1980</b>	4232', -1979	<b>(-1)</b>	4247', -1974	<b>(-6)</b>
Mississippian	<b>4312', -2053</b>	4314', -2061	<b>(+8)</b>	4322', -2049	<b>(-4)</b>
Osage	<b>4326', -2067</b>	4322', -2069	<b>(+2)</b>	4338', -2065	<b>(-2)</b>

**Summary**

The location for the Elmer's #2-19 was found via 3-D seismic survey. The new well ran structurally as expected via the survey. One Drill Stem Test was conducted which was negative. After all gathered data had been examined the decision was made to plug and abandon the Elmer's #2-19 well.

Respectfully Submitted,

Jason T Alm  
Hard Rock Consulting, Inc.