

Saman Sharifaie

Petroleum Geologist

GEOLOGIST'S REPORT

DRILLING TIME AND SAMPLE LOG

COMPANY **Martin Drilling Co., Inc.**
LEASE **Hammerichind #1-24**

FIELD **Wildcat**
LOCATION **660' FSL & 330' FWL**

SEC **24** TWPSP **4S** RANGE **31W**
COUNTY **Rushville** STATE **Kansas**

CONTRACTOR **Martin Drilling #2**
SPUD **03/04/14** COMP **03/12/14**

RTD **4:58P** LTD **4:53A**
MUD UP **3:76'** TYPE MUD **Chemical**

SAMPLES SAVED FROM **3640'** TO RTD
DRILLING TIME KEPT FROM **3640'** TO RTD

SAMPLES EXAMINED FROM **3640'** TO RTD
GEOLOGICAL SUPERVISION FROM **3340'**

REFERENCE WELL **Gilbert Unit #1-26**

CASING
CONDUCTOR **8-5/8" at 226'**
SURFACE **8-5/8" at 226'**
PRODUCTION **5-1/2" at 551'**

ELECTRICAL SURVEYS
CND: DIL. MEL. SANC
Pioneer Pipeline

ELEVATIONS
KB 291.6'

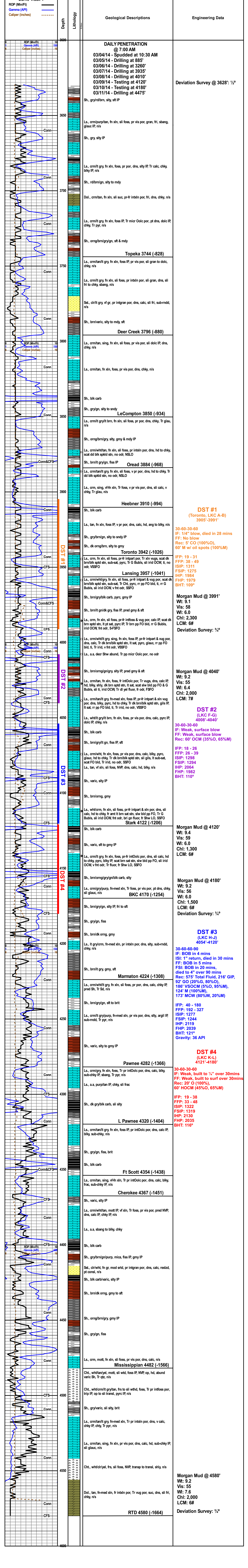
MEASUREMENTS ARE ALL FROM KELLY BUSHING

Formation	Sample Tops	E-log Tops	Strat Pos.
Anhydrite	2673 (+243)	2673 (+243)	-4
Base Anhydrite	2706 (+210)	2706 (+210)	-2
Truska	3744 (-828)	3744 (-828)	-2
Hedberg	3009 (-993)	3010 (-994)	-2
Leadbiter	3056 (-1040)	3057 (-1041)	-1
Lensing	4124 (-1208)	4122 (-1206)	1
Stark	4283 (-1369)	4282 (-1368)	-2
Pawnee	4366 (-1450)	4367 (-1451)	-2
Cherokee	4480 (-1564)	4482 (-1566)	-5
Mississippian			

REMARKS Due to fair shows of oil in multiple pay zones and positive DST results, it is recommended and agreed upon by all parties that production casing be set to further evaluate this well.

Respectfully Submitted,
Saman Sharifaie
Petroleum Geologist

API #15-153-20991
*Tops have been adjusted to electric logs



API #15-153-20991