



DRILL STEM TEST REPORT

Prepared For: **Eagle Creek Corp**

8100 E 22nd St. North BLDG1500 Suite A
Wichita, KS 67226

ATTN: Gary Gensch

Barnhart #1-19

19-17s-34w Scott,KS

Start Date: 2014.05.04 @ 11:40:44

End Date: 2014.05.04 @ 17:50:29

Job Ticket #: 56345 DST #: 1

Trilobite Testing, Inc
PO Box 362 Hays, KS 67601
ph: 785-625-4778 fax: 785-625-5620

Printed: 2014.05.13 @ 09:37:32

Eagle Creek Corp
19-17s-34w Scott,KS
Barnhart #1-19
DST # 1
LKC "I"
2014.05.04



TRILOBITE TESTING, INC

DRILL STEM TEST REPORT

Eagle Creek Corp
 8100 E 22nd St. North BLDG1500 Suite A
 Wichita, KS 67226
 ATTN: Gary Gensch

19-17s-34w Scott, KS
Barnhart #1-19
 Job Ticket: 56345 **DST#: 1**
 Test Start: 2014.05.04 @ 11:40:44

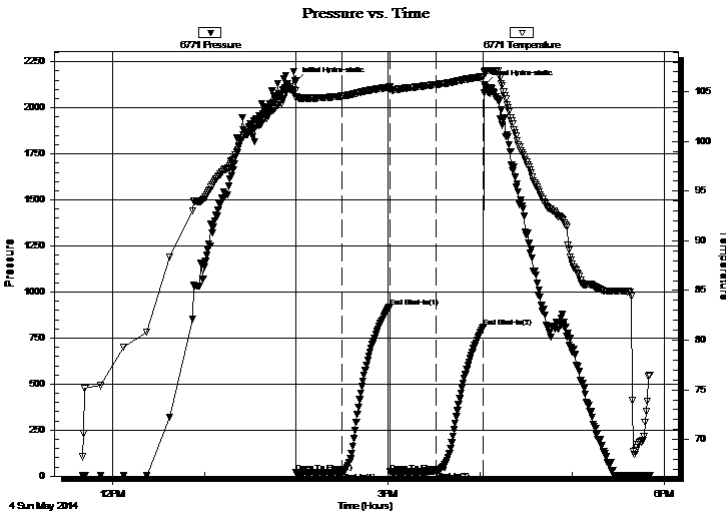
GENERAL INFORMATION:

Formation: **LKC "I"**
 Deviated: No Whipstock: ft (KB)
 Time Tool Opened: 13:59:44
 Time Test Ended: 17:50:29
 Interval: **4272.00 ft (KB) To 4312.00 ft (KB) (TVD)**
 Total Depth: 4312.00 ft (KB) (TVD)
 Hole Diameter: 7.88 inches Hole Condition: Fair
 Test Type: Conventional Bottom Hole (Initial)
 Tester: Shane McBride
 Unit No: 55
 Reference Elevations: 3144.00 ft (KB)
 3136.00 ft (CF)
 KB to GR/CF: 8.00 ft

Serial #: 6771 Inside
 Press@RunDepth: 24.88 psig @ 4273.00 ft (KB) Capacity: 8000.00 psig
 Start Date: 2014.05.04 End Date: 2014.05.04 Last Calib.: 2014.05.04
 Start Time: 11:40:44 End Time: 17:50:29 Time On Btm: 2014.05.04 @ 13:59:29
 Time Off Btm: 2014.05.04 @ 16:02:44

TEST COMMENT: Surface blow died in 11 min.
 No return
 No blow
 No return

PRESSURE SUMMARY



Time (Min.)	Pressure (psig)	Temp (deg F)	Annotation
0	2143.88	105.13	Initial Hydro-static
1	18.95	104.43	Open To Flow (1)
30	21.70	104.57	Shut-In(1)
62	919.97	105.47	End Shut-In(1)
62	23.03	105.22	Open To Flow (2)
92	24.88	105.73	Shut-In(2)
123	811.15	106.53	End Shut-In(2)
124	2126.63	107.05	Final Hydro-static

Recovery

Length (ft)	Description	Volume (bbl)
5.00	mud w/oil scum 100%m	0.02
0.00	show of oil on top 1/2"	0.00

Gas Rates

	Choke (inches)	Pressure (psig)	Gas Rate (Mcf/d)



**TRILOBITE
TESTING, INC**

DRILL STEM TEST REPORT

Eagle Creek Corp
8100 E 22nd St. North BLDG1500 Suite A
Wichita, KS 67226
ATTN: Gary Gensch

19-17s-34w Scott, KS
Barnhart #1-19
Job Ticket: 56345 **DST#: 1**
Test Start: 2014.05.04 @ 11:40:44

GENERAL INFORMATION:

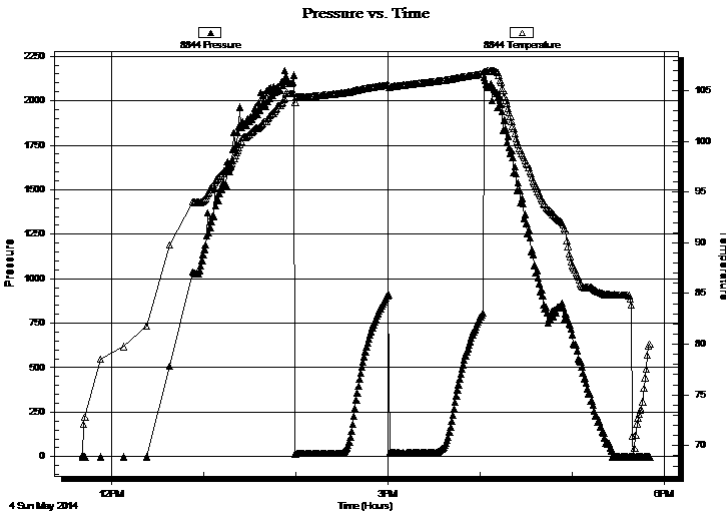
Formation: **LKC "I"**
Deviated: No Whipstock: ft (KB)
Time Tool Opened: 13:59:44
Time Test Ended: 17:50:29
Interval: **4272.00 ft (KB) To 4312.00 ft (KB) (TVD)**
Total Depth: 4312.00 ft (KB) (TVD)
Hole Diameter: 7.88 inches Hole Condition: Fair
Test Type: Conventional Bottom Hole (Initial)
Tester: Shane McBride
Unit No: 55
Reference Elevations: 3144.00 ft (KB)
3136.00 ft (CF)
KB to GR/CF: 8.00 ft

Serial #: 8844 Outside

Press@RunDepth: psig @ 4273.00 ft (KB) Capacity: 8000.00 psig
Start Date: 2014.05.04 End Date: 2014.05.04 Last Calib.: 2014.05.04
Start Time: 11:41:12 End Time: 17:50:42 Time On Btm:
Time Off Btm:

TEST COMMENT: Surface blow died in 11 min.
No return
No blow
No return

PRESSURE SUMMARY



Time (Min.)	Pressure (psig)	Temp (deg F)	Annotation

Recovery

Length (ft)	Description	Volume (bbl)
5.00	mud w/oil scum 100%m	0.02
0.00	show of oil on top 1/2"	0.00

Gas Rates

Choke (inches)	Pressure (psig)	Gas Rate (Mcf/d)



**TRILOBITE
TESTING, INC**

DRILL STEM TEST REPORT

TOOL DIAGRAM

Eagle Creek Corp

19-17s-34w Scott,KS

8100 E 22nd St. North BLDG1500 Suite A
Wichita, KS 67226

Barnhart #1-19

Job Ticket: 56345

DST#: 1

ATTN: Gary Gensch

Test Start: 2014.05.04 @ 11:40:44

Tool Information

Drill Pipe:	Length: 4254.00 ft	Diameter: 3.80 inches	Volume: 59.67 bbl	Tool Weight: 1500.00 lb
Heavy Wt. Pipe:	Length: 0.00 ft	Diameter: 0.00 inches	Volume: 0.00 bbl	Weight set on Packer: 25000.00 lb
Drill Collar:	Length: 30.00 ft	Diameter: 2.25 inches	Volume: 0.15 bbl	Weight to Pull Loose: 85000.00 lb
			<u>Total Volume: 59.82 bbl</u>	Tool Chased 0.00 ft
Drill Pipe Above KB:	32.00 ft			String Weight: Initial 62000.00 lb
Depth to Top Packer:	4272.00 ft			Final 62000.00 lb
Depth to Bottom Packer:	ft			
Interval between Packers:	40.00 ft			
Tool Length:	60.00 ft			
Number of Packers:	2	Diameter: 6.75 inches		

Tool Comments:

Tool Description

Tool Description	Length (ft)	Serial No.	Position	Depth (ft)	Accum. Lengths
Change Over Sub	1.00			4253.00	
Shut In Tool	5.00			4258.00	
Hydraulic tool	5.00			4263.00	
Packer	5.00			4268.00	20.00 Bottom Of Top Packer
Packer	4.00			4272.00	
Stubb	1.00			4273.00	
Recorder	0.00	6771	Inside	4273.00	
Recorder	0.00	8844	Outside	4273.00	
Anchor	34.00			4307.00	
Bullnose	5.00			4312.00	40.00 Bottom Packers & Anchor
Total Tool Length:	60.00				



**TRILOBITE
TESTING, INC**

DRILL STEM TEST REPORT

FLUID SUMMARY

Eagle Creek Corp

19-17s-34w Scott,KS

8100 E 22nd St.North BLDG1500 Suite A
Wichita, KS 67226

Barnhart #1-19

Job Ticket: 56345

DST#: 1

ATTN: Gary Gensch

Test Start: 2014.05.04 @ 11:40:44

Mud and Cushion Information

Mud Type: Gel Chem

Cushion Type:

Oil API:

0 deg API

Mud Weight: 9.00 lb/gal

Cushion Length:

ft

Water Salinity:

0 ppm

Viscosity: 55.00 sec/qt

Cushion Volume:

bbbl

Water Loss: 7.14 in³

Gas Cushion Type:

Resistivity: 0.00 ohm.m

Gas Cushion Pressure:

psig

Salinity: 2300.00 ppm

Filter Cake: 1.00 inches

Recovery Information

Recovery Table

Length ft	Description	Volume bbl
5.00	mud w /oil scum 100%m	0.025
0.00	show of oil on top 1/2"	0.000

Total Length: 5.00 ft Total Volume: 0.025 bbl

Num Fluid Samples: 0

Num Gas Bombs: 0

Serial #:

Laboratory Name:

Laboratory Location:

Recovery Comments:

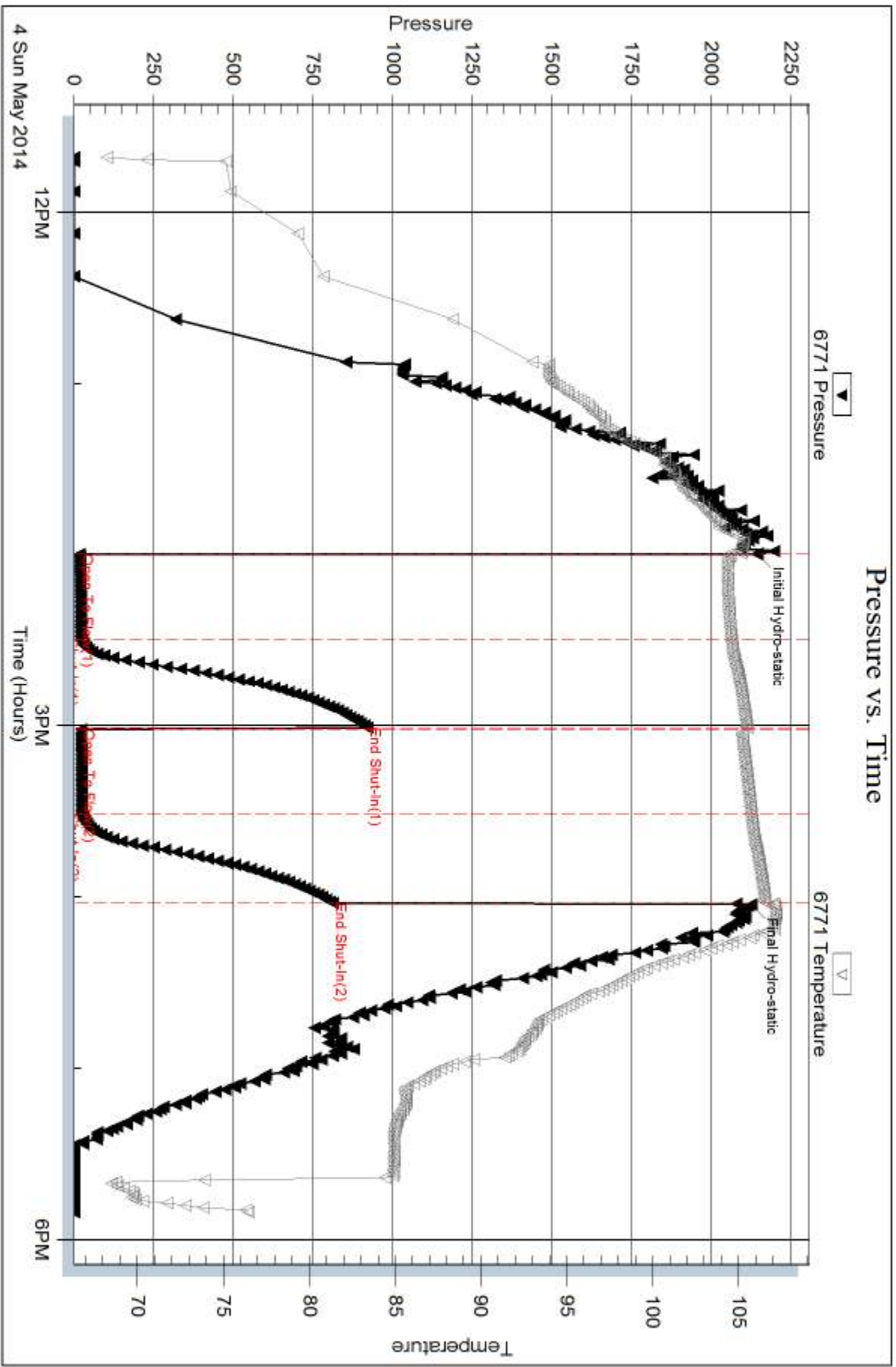
Serial #: 6771

Inside

Eagle Creek Corp

Barnhart #1-19

DST Test Number: 1

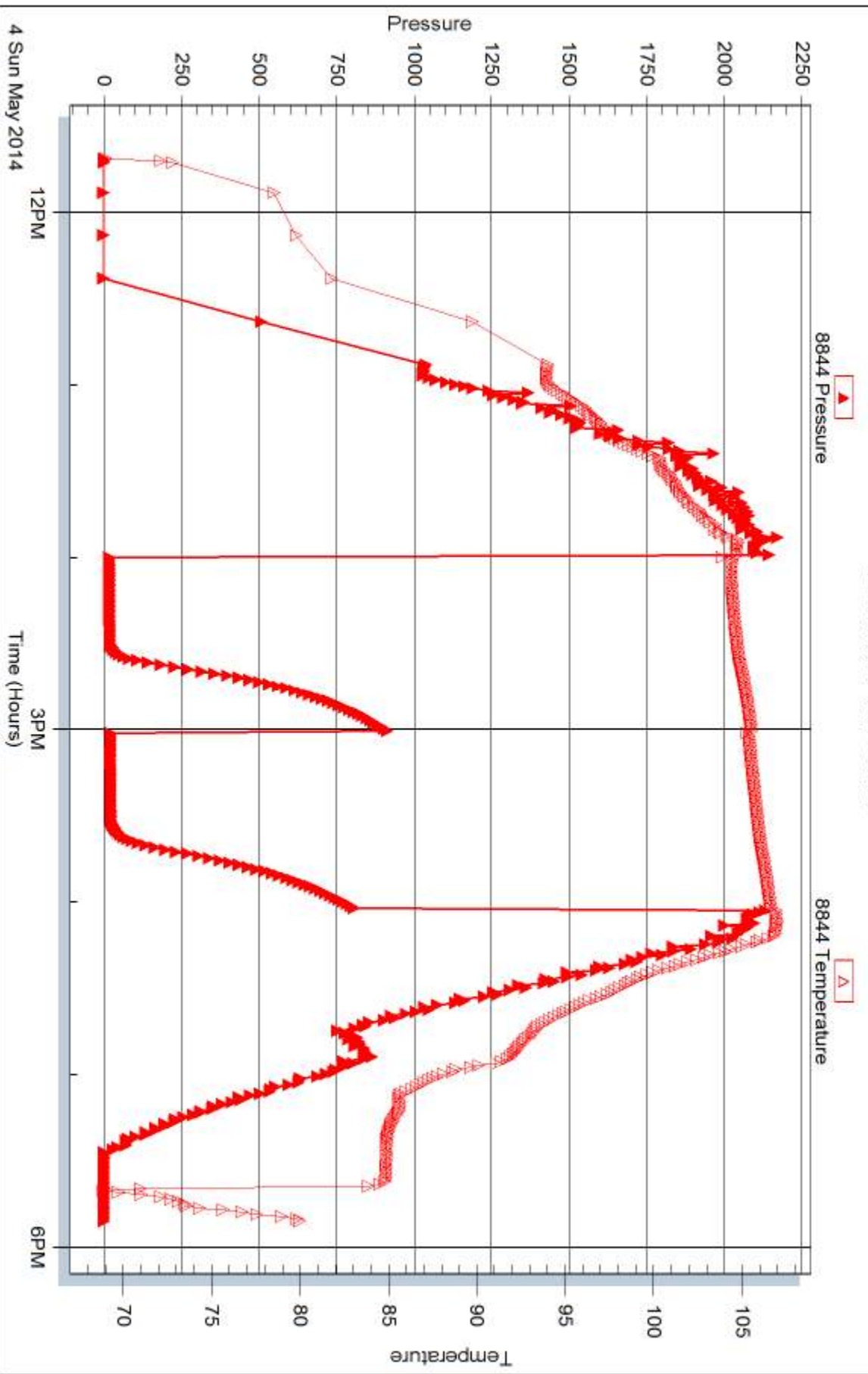


Tribble Testing, Inc

Ref. No: 56345

Printed: 2014.05.13 @ 09:37:33

Pressure vs. Time





DRILL STEM TEST REPORT

Prepared For: **Eagle Creek Corp**

8100 E 22nd St. North BLDG1500 Suite A
Wichita, KS 67226

ATTN: Gary Gensch

Barnhart #1-19

19-17s-34w Scott,KS

Start Date: 2014.05.05 @ 03:50:36

End Date: 2014.05.05 @ 10:04:36

Job Ticket #: 56346 DST #: 2

Trilobite Testing, Inc
PO Box 362 Hays, KS 67601
ph: 785-625-4778 fax: 785-625-5620

Printed: 2014.05.13 @ 09:36:42



TRILOBITE TESTING, INC.

DRILL STEM TEST REPORT

Eagle Creek Corp
 8100 E 22nd St. North BLDG1500 Suite A
 Wichita, KS 67226
 ATTN: Gary Gensch

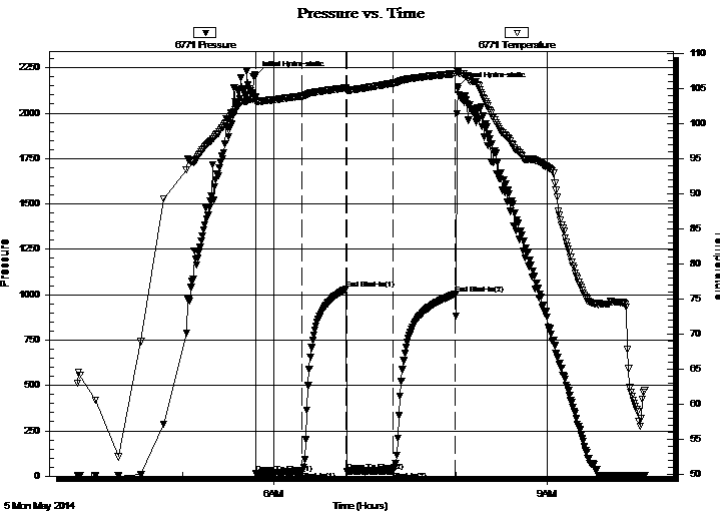
19-17s-34w Scott, KS
Barnhart #1-19
 Job Ticket: 56346 **DST#: 2**
 Test Start: 2014.05.05 @ 03:50:36

GENERAL INFORMATION:

Formation: **LKC lower J - upper**
 Deviated: No Whipstock: ft (KB)
 Time Tool Opened: 05:48:21
 Time Test Ended: 10:04:36
 Interval: **4328.00 ft (KB) To 4355.00 ft (KB) (TVD)**
 Total Depth: 4355.00 ft (KB) (TVD)
 Hole Diameter: 7.88 inches Hole Condition: Fair
 Test Type: Conventional Bottom Hole (Reset)
 Tester: Shane McBride
 Unit No: 55
 Reference Elevations: 3144.00 ft (KB)
 3136.00 ft (CF)
 KB to GR/CF: 8.00 ft

Serial #: 6771 Inside
 Press@RunDepth: 28.40 psig @ 4329.00 ft (KB) Capacity: 8000.00 psig
 Start Date: 2014.05.05 End Date: 2014.05.05 Last Calib.: 2014.05.05
 Start Time: 03:50:36 End Time: 10:04:36 Time On Btm: 2014.05.05 @ 05:48:06
 Time Off Btm: 2014.05.05 @ 08:01:21

TEST COMMENT: 1/4" blow died in 17 min.
 No return
 No blow
 No return



PRESSURE SUMMARY

Time (Min.)	Pressure (psig)	Temp (deg F)	Annotation
0	2205.43	103.77	Initial Hydro-static
1	15.90	103.16	Open To Flow (1)
31	24.25	103.94	Shut-In(1)
60	1031.58	105.08	End Shut-In(1)
60	27.77	104.81	Open To Flow (2)
91	28.40	105.75	Shut-In(2)
132	1002.86	107.14	End Shut-In(2)
134	2144.88	107.37	Final Hydro-static

Recovery

Length (ft)	Description	Volume (bbl)
5.00	free oil (tar) 100%o	0.02
15.00	mud w/tar balls 100%m	0.07

* Recovery from multiple tests

Gas Rates

Choke (inches)	Pressure (psig)	Gas Rate (Mcf/d)



TRILOBITE TESTING, INC.

DRILL STEM TEST REPORT

Eagle Creek Corp
 8100 E 22nd St. North BLDG1500 Suite A
 Wichita, KS 67226
 ATTN: Gary Gensch

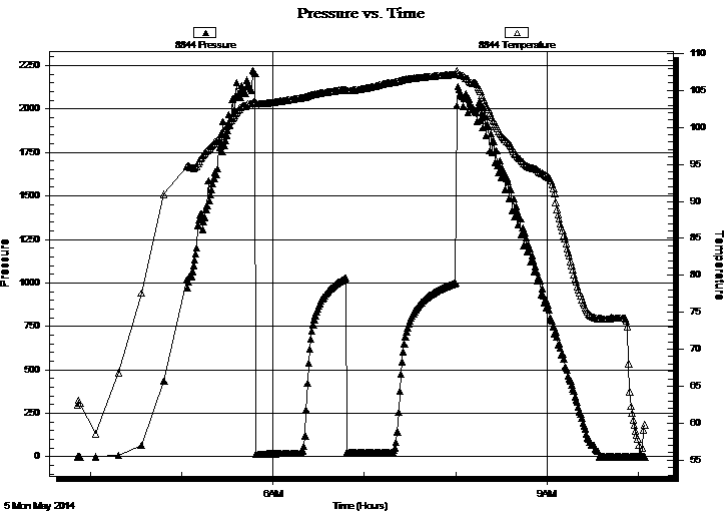
19-17s-34w Scott, KS
Barnhart #1-19
 Job Ticket: 56346 **DST#: 2**
 Test Start: 2014.05.05 @ 03:50:36

GENERAL INFORMATION:

Formation: **LKC lower J - upper**
 Deviated: No Whipstock: ft (KB)
 Time Tool Opened: 05:48:21
 Time Test Ended: 10:04:36
Interval: 4328.00 ft (KB) To 4355.00 ft (KB) (TVD)
 Total Depth: 4355.00 ft (KB) (TVD)
 Hole Diameter: 7.88 inches Hole Condition: Fair
 Test Type: Conventional Bottom Hole (Reset)
 Tester: Shane McBride
 Unit No: 55
 Reference Elevations: 3144.00 ft (KB)
 3136.00 ft (CF)
 KB to GR/CF: 8.00 ft

Serial #: 8844 Outside
 Press@RunDepth: psig @ 4329.00 ft (KB) Capacity: 8000.00 psig
 Start Date: 2014.05.05 End Date: 2014.05.05 Last Calib.: 2014.05.05
 Start Time: 03:51:11 End Time: 10:04:41 Time On Btm:
 Time Off Btm:

TEST COMMENT: 1/4" blow died in 17 min.
 No return
 No blow
 No return



PRESSURE SUMMARY

Time (Min.)	Pressure (psig)	Temp (deg F)	Annotation

Recovery

Length (ft)	Description	Volume (bbl)
5.00	free oil (tar) 100%o	0.02
15.00	mud w/tar balls 100%m	0.07

* Recovery from multiple tests

Gas Rates

	Choke (inches)	Pressure (psig)	Gas Rate (Mcf/d)



**TRILOBITE
TESTING, INC**

DRILL STEM TEST REPORT

TOOL DIAGRAM

Eagle Creek Corp

19-17s-34w Scott,KS

8100 E 22nd St. North BLDG1500 Suite A
Wichita, KS 67226

Barnhart #1-19

Job Ticket: 56346

DST#: 2

ATTN: Gary Gensch

Test Start: 2014.05.05 @ 03:50:36

Tool Information

Drill Pipe:	Length: 4288.00 ft	Diameter: 3.80 inches	Volume: 60.15 bbl	Tool Weight: 1500.00 lb
Heavy Wt. Pipe:	Length: 0.00 ft	Diameter: 0.00 inches	Volume: 0.00 bbl	Weight set on Packer: 25000.00 lb
Drill Collar:	Length: 30.00 ft	Diameter: 2.25 inches	Volume: 0.15 bbl	Weight to Pull Loose: 85000.00 lb
			<u>Total Volume: 60.30 bbl</u>	Tool Chased 0.00 ft
Drill Pipe Above KB:	10.00 ft			String Weight: Initial 60000.00 lb
Depth to Top Packer:	4328.00 ft			Final 60000.00 lb
Depth to Bottom Packer:	ft			
Interval between Packers:	27.00 ft			
Tool Length:	47.00 ft			
Number of Packers:	2	Diameter: 6.75 inches		

Tool Comments:

Tool Description

Tool Description	Length (ft)	Serial No.	Position	Depth (ft)	Accum. Lengths
Change Over Sub	1.00			4309.00	
Shut In Tool	5.00			4314.00	
Hydraulic tool	5.00			4319.00	
Packer	5.00			4324.00	20.00 Bottom Of Top Packer
Packer	4.00			4328.00	
Stubb	1.00			4329.00	
Recorder	0.00	6771	Inside	4329.00	
Recorder	0.00	8844	Outside	4329.00	
Anchor	21.00			4350.00	
Bullnose	5.00			4355.00	27.00 Bottom Packers & Anchor
Total Tool Length:	47.00				



**TRILOBITE
TESTING, INC**

DRILL STEM TEST REPORT

FLUID SUMMARY

Eagle Creek Corp

19-17s-34w Scott,KS

8100 E 22nd St.North BLDG1500 Suite A
Wichita, KS 67226

Barnhart #1-19

Job Ticket: 56346

DST#: 2

ATTN: Gary Gensch

Test Start: 2014.05.05 @ 03:50:36

Mud and Cushion Information

Mud Type: Gel Chem

Cushion Type:

Oil API:

0 deg API

Mud Weight: 9.00 lb/gal

Cushion Length:

ft

Water Salinity:

0 ppm

Viscosity: 55.00 sec/qt

Cushion Volume:

bbbl

Water Loss: 7.13 in³

Gas Cushion Type:

Resistivity: 0.00 ohm.m

Gas Cushion Pressure:

psig

Salinity: 2300.00 ppm

Filter Cake: 1.00 inches

Recovery Information

Recovery Table

Length ft	Description	Volume bbl
5.00	free oil (tar) 100%o	0.025
15.00	mud w /tar balls 100%m	0.074

Total Length: 20.00 ft Total Volume: 0.099 bbl

Num Fluid Samples: 0

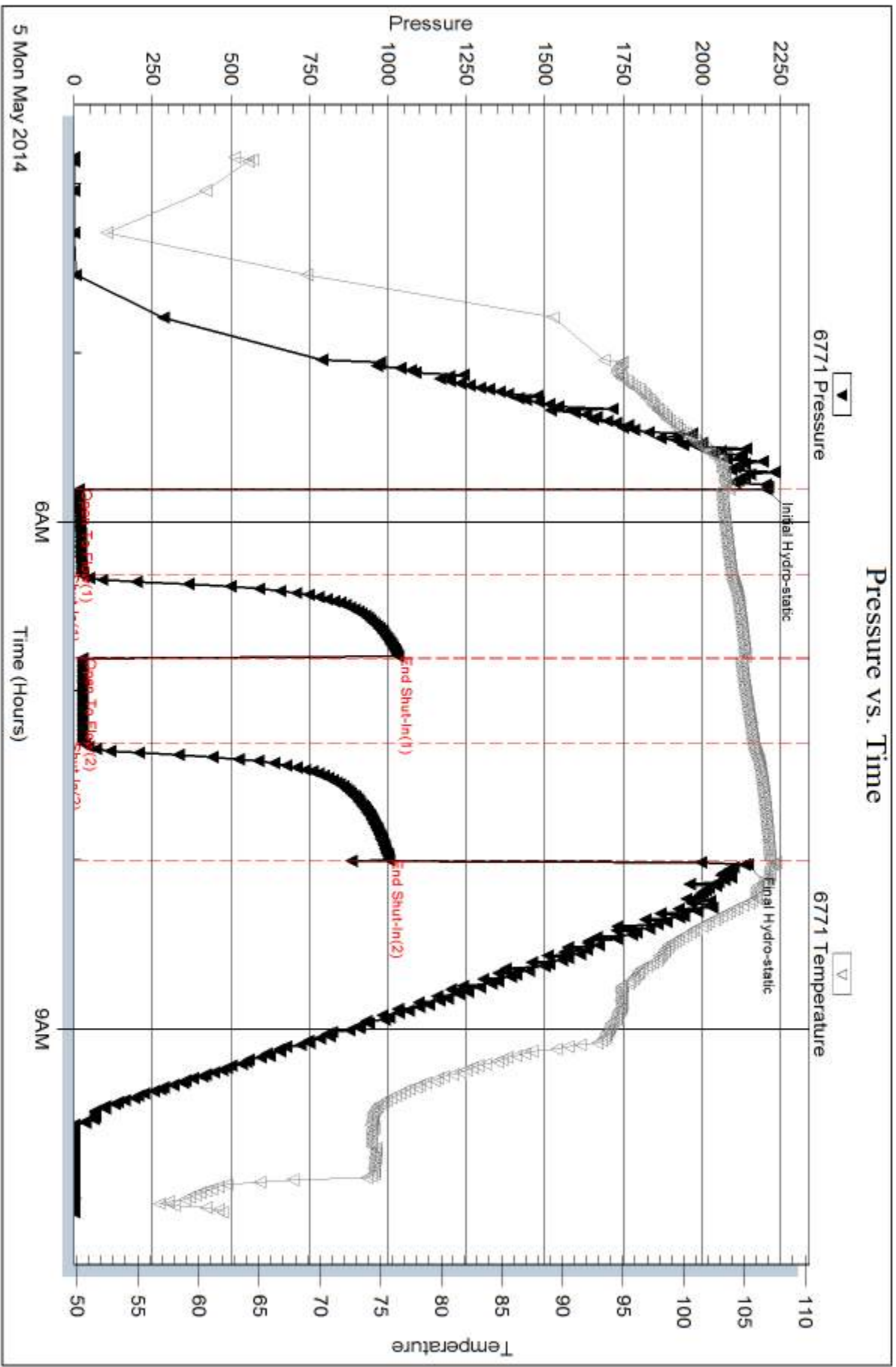
Num Gas Bombs: 0

Serial #:

Laboratory Name:

Laboratory Location:

Recovery Comments:

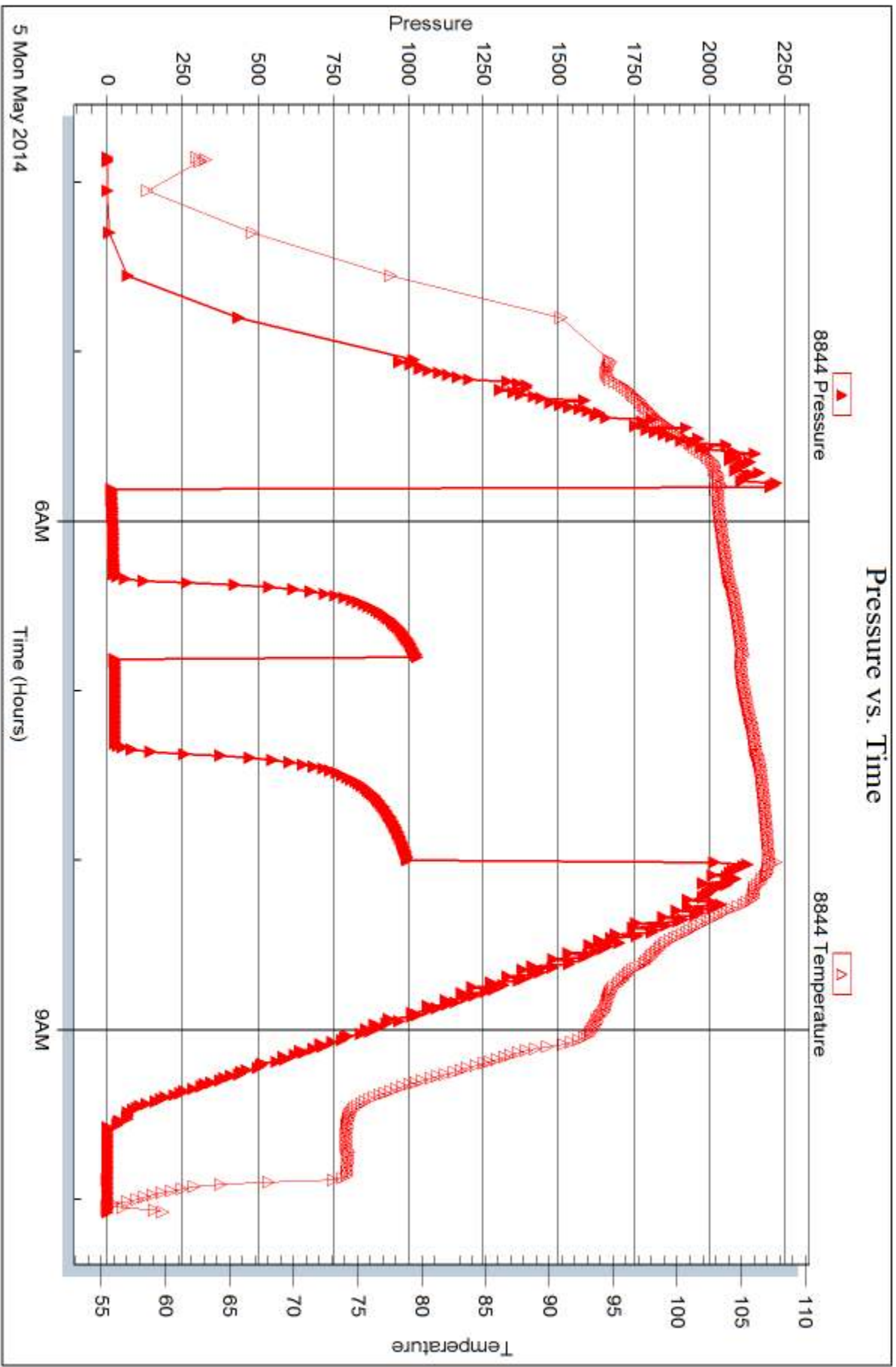


Serial #: 8844

Outside Eagle Creek Corp

Barnhart #1-19

DST Test Number: 2



Triobite Testing, Inc

Ref. No: 56346

Printed: 2014.05.13 @ 09:36:43



DRILL STEM TEST REPORT

Prepared For: **Eagle Creek Corp**

8100 E 22nd St. North BLDG1500 Suite A
Wichita, KS 67226

ATTN: Gary Gensch

Barnhart #1-19

19-17s-34w Scott,KS

Start Date: 2014.05.06 @ 05:02:44

End Date: 2014.05.06 @ 13:47:44

Job Ticket #: 56347 DST #: 3

Trilobite Testing, Inc
PO Box 362 Hays, KS 67601
ph: 785-625-4778 fax: 785-625-5620

Printed: 2014.05.13 @ 09:36:19



**TRILOBITE
TESTING, INC**

DRILL STEM TEST REPORT

Eagle Creek Corp
8100 E 22nd St. North BLDG1500 Suite A
Wichita, KS 67226
ATTN: Gary Gensch

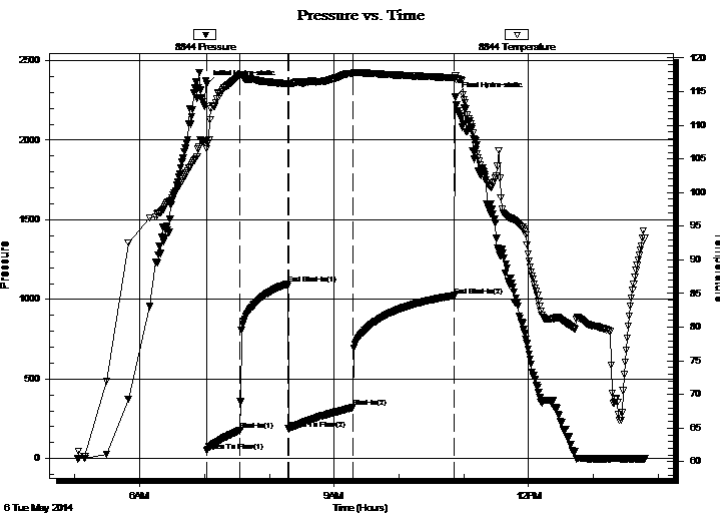
19-17s-34w Scott, KS
Barnhart #1-19
Job Ticket: 56347 **DST#: 3**
Test Start: 2014.05.06 @ 05:02:44

GENERAL INFORMATION:

Formation: **Marmaton A-B**
Deviated: No Whipstock: ft (KB) Test Type: Conventional Bottom Hole (Reset)
Time Tool Opened: 07:02:14 Tester: Shane McBride
Time Test Ended: 13:47:44 Unit No: 55
Interval: 4457.00 ft (KB) To 4514.00 ft (KB) (TVD) Reference Elevations: 3144.00 ft (KB)
Total Depth: 4514.00 ft (KB) (TVD) 3136.00 ft (CF)
Hole Diameter: 7.88 inches Hole Condition: Fair KB to GR/CF: 8.00 ft

Serial #: 8844 Outside
Press@RunDepth: 322.23 psig @ 4458.00 ft (KB) Capacity: 8000.00 psig
Start Date: 2014.05.06 End Date: 2014.05.06 Last Calib.: 2014.05.06
Start Time: 05:02:44 End Time: 13:47:44 Time On Btm: 2014.05.06 @ 07:01:59
Time Off Btm: 2014.05.06 @ 10:52:14

TEST COMMENT: B.O.B. in 12 min.
No return
B.O.B. in 18 min.
No return



PRESSURE SUMMARY

Time (Min.)	Pressure (psig)	Temp (deg F)	Annotation
0	2351.82	107.74	Initial Hydro-static
1	48.08	106.50	Open To Flow (1)
31	176.26	117.42	Shut-In(1)
75	1098.29	116.16	End Shut-In(1)
76	186.79	115.95	Open To Flow (2)
136	322.23	117.69	Shut-In(2)
230	1024.29	117.08	End Shut-In(2)
231	2271.32	117.36	Final Hydro-static

Recovery

Length (ft)	Description	Volume (bbl)
186.00	g & o c w 10g 10o 80w	2.34
124.00	g o & m c w 10g 15o 20m 55w	1.74
124.00	g o & w c m 10g 20o 20w 50m	1.74
124.00	s g o & w c m 5g 10o 10w 75m	1.74
83.00	s g o c m 5g 10o 85m	1.16
10.00	s g o 5g 95o	0.14

* Recovery from multiple tests

Gas Rates

	Choke (inches)	Pressure (psig)	Gas Rate (Mcf/d)



TRILOBITE TESTING, INC.

DRILL STEM TEST REPORT

Eagle Creek Corp
8100 E 22nd St. North BLDG1500 Suite A
Wichita, KS 67226
ATTN: Gary Gensch

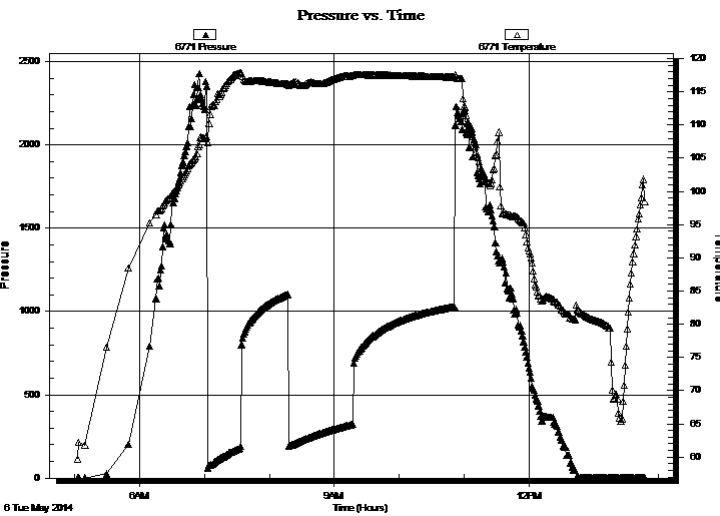
19-17s-34w Scott, KS
Barnhart #1-19
Job Ticket: 56347 **DST#: 3**
Test Start: 2014.05.06 @ 05:02:44

GENERAL INFORMATION:

Formation: **Marmaton A-B**
Deviated: No Whipstock: ft (KB) Test Type: Conventional Bottom Hole (Reset)
Time Tool Opened: 07:02:14 Tester: Shane McBride
Time Test Ended: 13:47:44 Unit No: 55
Interval: **4457.00 ft (KB) To 4514.00 ft (KB) (TVD)** Reference Elevations: 3144.00 ft (KB)
Total Depth: 4514.00 ft (KB) (TVD) 3136.00 ft (CF)
Hole Diameter: 7.88 inches Hole Condition: Fair KB to GR/CF: 8.00 ft

Serial #: 6771 Inside
Press@RunDepth: psig @ 4458.00 ft (KB) Capacity: 8000.00 psig
Start Date: 2014.05.06 End Date: 2014.05.06 Last Calib.: 2014.05.06
Start Time: 05:02:34 End Time: 13:47:34 Time On Btm:
Time Off Btm:

TEST COMMENT: B.O.B. in 12 min.
No return
B.O.B. in 18 min.
No return



PRESSURE SUMMARY

Time (Min.)	Pressure (psig)	Temp (deg F)	Annotation

Recovery

Length (ft)	Description	Volume (bbl)
186.00	g & o c w 10g 10o 80w	2.34
124.00	g o & m c w 10g 15o 20m 55w	1.74
124.00	g o & w c m 10g 20o 20w 50m	1.74
124.00	s g o & w c m 5g 10o 10w 75m	1.74
83.00	s g o c m 5g 10o 85m	1.16
10.00	s g o 5g 95o	0.14

* Recovery from multiple tests

Gas Rates

Choke (inches)	Pressure (psig)	Gas Rate (Mcf/d)



**TRILOBITE
TESTING, INC**

DRILL STEM TEST REPORT

TOOL DIAGRAM

Eagle Creek Corp
8100 E 22nd St. North BLDG1500 Suite A
Wichita, KS 67226
ATTN: Gary Gensch

19-17s-34w Scott, KS
Barnhart #1-19
Job Ticket: 56347 **DST#: 3**
Test Start: 2014.05.06 @ 05:02:44

Tool Information

Drill Pipe:	Length: 4438.00 ft	Diameter: 3.80 inches	Volume: 62.25 bbl	Tool Weight: 1500.00 lb
Heavy Wt. Pipe:	Length: 0.00 ft	Diameter: 0.00 inches	Volume: 0.00 bbl	Weight set on Packer: 25000.00 lb
Drill Collar:	Length: 30.00 ft	Diameter: 2.25 inches	Volume: 0.15 bbl	Weight to Pull Loose: 85000.00 lb
			<u>Total Volume: 62.40 bbl</u>	Tool Chased 0.00 ft
Drill Pipe Above KB:	31.00 ft			String Weight: Initial 62000.00 lb
Depth to Top Packer:	4457.00 ft			Final 68000.00 lb
Depth to Bottom Packer:	ft			
Interval between Packers:	57.00 ft			
Tool Length:	77.00 ft			
Number of Packers:	2	Diameter: 6.75 inches		

Tool Comments:

Tool Description	Length (ft)	Serial No.	Position	Depth (ft)	Accum. Lengths
-------------------------	--------------------	-------------------	-----------------	-------------------	-----------------------

Change Over Sub	1.00			4438.00	
Shut In Tool	5.00			4443.00	
Hydraulic tool	5.00			4448.00	
Packer	5.00			4453.00	20.00 Bottom Of Top Packer
Packer	4.00			4457.00	
Stubb	1.00			4458.00	
Recorder	0.00	6771	Inside	4458.00	
Recorder	0.00	8844	Outside	4458.00	
Anchor	5.00			4463.00	
Change Over Sub	1.00			4464.00	
Drill Pipe	31.00			4495.00	
Change Over Sub	1.00			4496.00	
Perforations	13.00			4509.00	
Bullnose	5.00			4514.00	57.00 Bottom Packers & Anchor

Total Tool Length: 77.00



**TRILOBITE
TESTING, INC**

DRILL STEM TEST REPORT

FLUID SUMMARY

Eagle Creek Corp
8100 E 22nd St. North BLDG1500 Suite A
Wichita, KS 67226
ATTN: Gary Gensch

19-17s-34w Scott, KS
Barnhart #1-19
Job Ticket: 56347 **DST#: 3**
Test Start: 2014.05.06 @ 05:02:44

Mud and Cushion Information

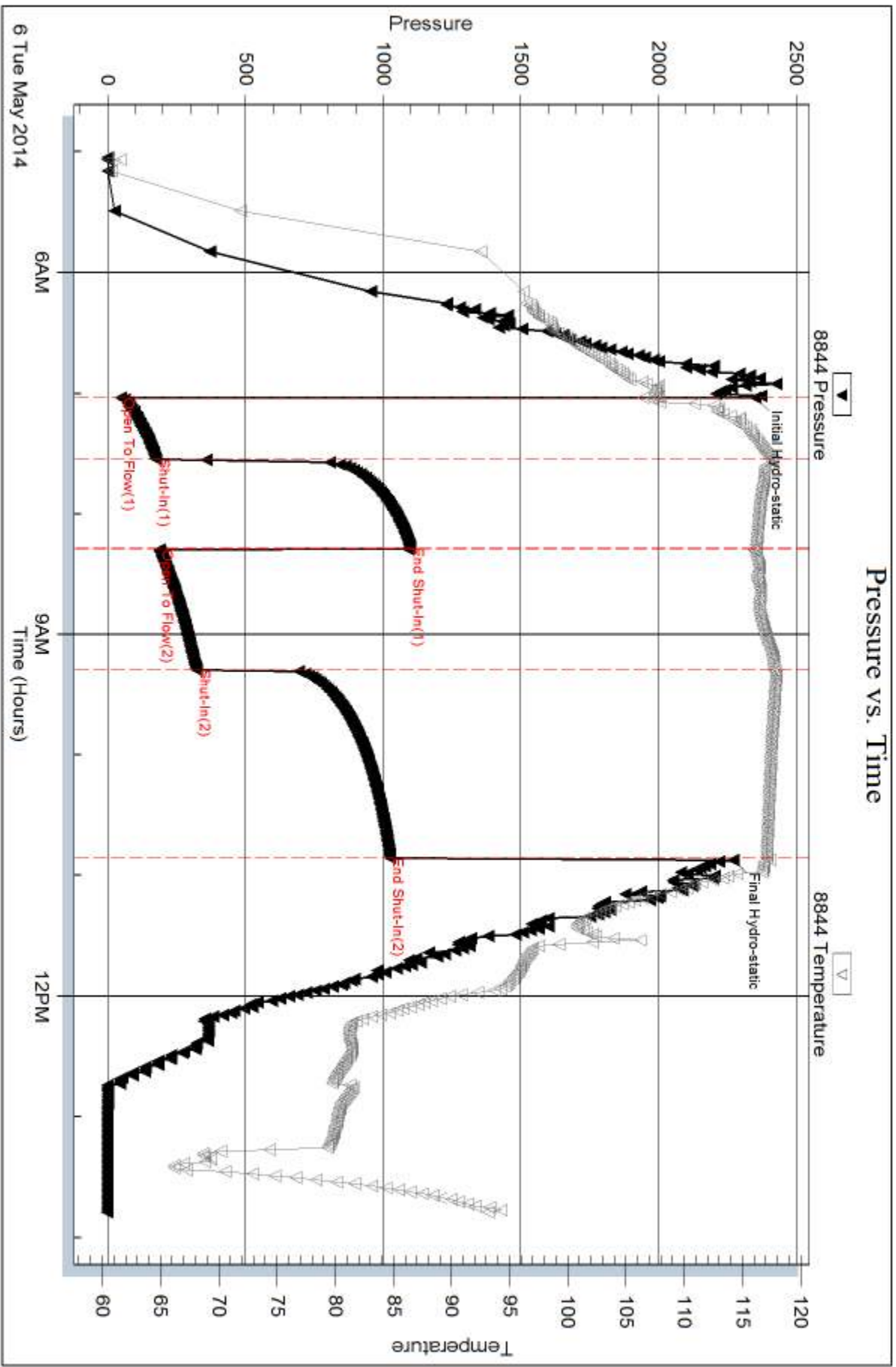
Mud Type: Gel Chem	Cushion Type:	Oil API: 30 deg API
Mud Weight: 10.00 lb/gal	Cushion Length: ft	Water Salinity: 28500 ppm
Viscosity: 42.00 sec/qt	Cushion Volume: bbl	
Water Loss: 10.74 in ³	Gas Cushion Type:	
Resistivity: 0.00 ohm.m	Gas Cushion Pressure: psig	
Salinity: 8000.00 ppm		
Filter Cake: 1.00 inches		

Recovery Information

Recovery Table

Length ft	Description	Volume bbl
186.00	g & o c w 10g 10o 80w	2.336
124.00	g o & m c w 10g 15o 20m 55w	1.739
124.00	g o & w c m 10g 20o 20w 50m	1.739
124.00	s g o & w c m 5g 10o 10w 75m	1.739
83.00	s g o c m 5g 10o 85m	1.164
10.00	s g o 5g 95o	0.140
0.00	90' weak gas in pipe	0.000

Total Length: 651.00 ft Total Volume: 8.857 bbl
 Num Fluid Samples: 0 Num Gas Bombs: 0 Serial #:
 Laboratory Name: Laboratory Location:
 Recovery Comments: rw .176 @ 97*f = 28,500 chlor



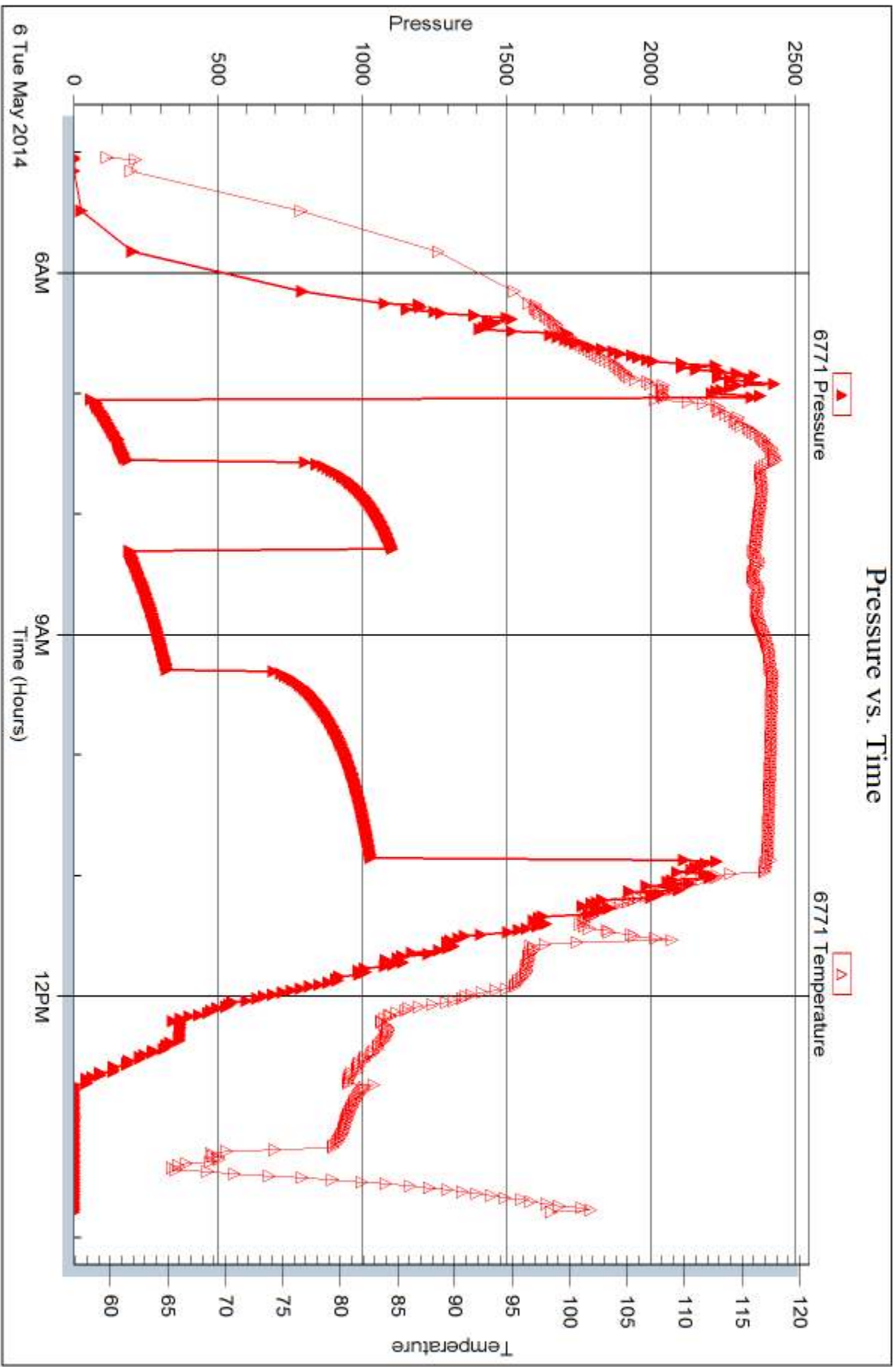
Serial #: 6771

Inside

Eagle Creek Corp

Barnhart #1-19

DST Test Number: 3





DRILL STEM TEST REPORT

Prepared For: **Eagle Creek Corp**

8100 E 22nd St. North BLDG1500 Suite A
Wichita, KS 67226

ATTN: Gary Gensch

Barnhart #1-19

19-17s-34w Scott,KS

Start Date: 2014.05.06 @ 22:00:23

End Date: 2014.05.07 @ 06:49:23

Job Ticket #: 56348 DST #: 4

Trilobite Testing, Inc
PO Box 362 Hays, KS 67601
ph: 785-625-4778 fax: 785-625-5620

Printed: 2014.05.13 @ 09:35:57



TRILOBITE TESTING, INC

DRILL STEM TEST REPORT

Eagle Creek Corp
 8100 E 22nd St. North BLDG1500 Suite A
 Wichita, KS 67226
 ATTN: Gary Gensch

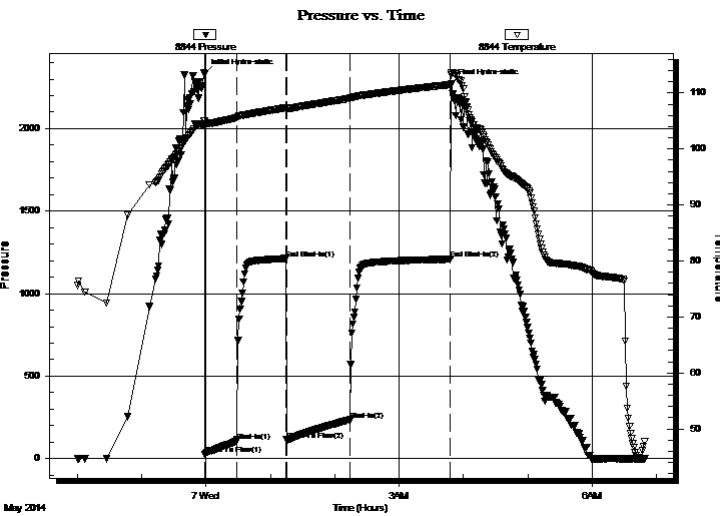
19-17s-34w Scott, KS
Barnhart #1-19
 Job Ticket: 56348 **DST#: 4**
 Test Start: 2014.05.06 @ 22:00:23

GENERAL INFORMATION:

Formation: **Marmaton C**
 Deviated: No Whipstock: ft (KB)
 Test Type: Conventional Bottom Hole (Reset)
 Time Tool Opened: 23:59:08 Tester: Shane McBride
 Time Test Ended: 06:49:23 Unit No: 55
 Interval: **4515.00 ft (KB) To 4535.00 ft (KB) (TVD)** Reference Elevations: 3144.00 ft (KB)
 Total Depth: 4535.00 ft (KB) (TVD) 3136.00 ft (CF)
 Hole Diameter: 7.88 inches Hole Condition: Fair KB to GR/CF: 8.00 ft

Serial #: 8844 Outside
 Press@RunDepth: 235.44 psig @ 4516.00 ft (KB) Capacity: 8000.00 psig
 Start Date: 2014.05.06 End Date: 2014.05.07 Last Calib.: 2014.05.07
 Start Time: 22:00:23 End Time: 06:49:23 Time On Btm: 2014.05.06 @ 23:58:53
 Time Off Btm: 2014.05.07 @ 03:48:38

TEST COMMENT: B.O.B. in 8 min.
 Surface return in 10 min., died in 26 min.
 B.O.B. in 20 min.
 SSurface blow in 9 min. died in 52 min.



PRESSURE SUMMARY

Time (Min.)	Pressure (psig)	Temp (deg F)	Annotation
0	2331.19	104.99	Initial Hydro-static
1	26.79	104.08	Open To Flow (1)
30	105.52	105.57	Shut-In(1)
76	1212.93	107.35	End Shut-In(1)
76	114.38	106.85	Open To Flow (2)
136	235.44	109.02	Shut-In(2)
229	1208.93	111.47	End Shut-In(2)
230	2273.24	113.21	Final Hydro-static

Recovery

Length (ft)	Description	Volume (bbl)
31.00	g o c m 35g 10o 55m	0.16
682.00	c g o 35g 65o	9.57
0.00	155' gas in pipe	0.00

* Recovery from multiple tests

Gas Rates

Choke (inches)	Pressure (psig)	Gas Rate (Mcf/d)



TRILOBITE TESTING, INC.

DRILL STEM TEST REPORT

Eagle Creek Corp

19-17s-34w Scott, KS

8100 E 22nd St. North BLDG1500 Suite A
Wichita, KS 67226

Barnhart #1-19

Job Ticket: 56348

DST#: 4

ATTN: Gary Gensch

Test Start: 2014.05.06 @ 22:00:23

GENERAL INFORMATION:

Formation: **Marmaton C**

Deviated: No Whipstock: ft (KB) Test Type: Conventional Bottom Hole (Reset)

Time Tool Opened: 23:59:08 Tester: Shane McBride

Time Test Ended: 06:49:23 Unit No: 55

Interval: 4515.00 ft (KB) To 4535.00 ft (KB) (TVD) Reference Elevations: 3144.00 ft (KB)

Total Depth: 4535.00 ft (KB) (TVD) 3136.00 ft (CF)

Hole Diameter: 7.88 inches Hole Condition: Fair KB to GR/CF: 8.00 ft

Serial #: 6771

Inside

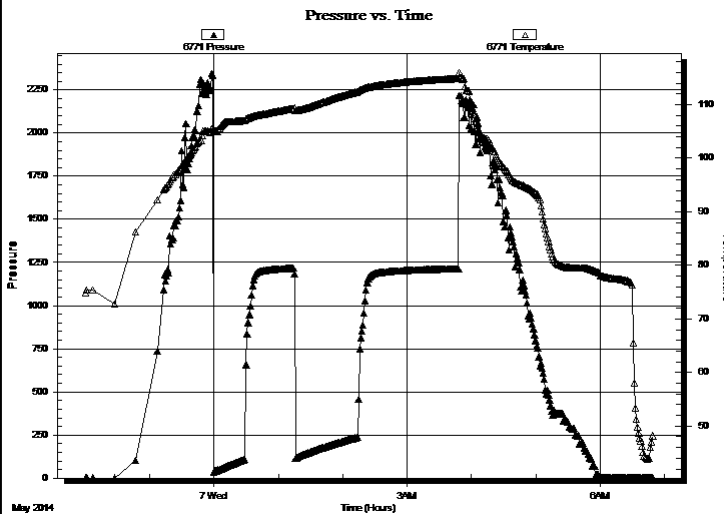
Press@RunDepth: psig @ 4516.00 ft (KB) Capacity: 8000.00 psig

Start Date: 2014.05.06 End Date: 2014.05.07 Last Calib.: 2014.05.07

Start Time: 22:00:16 End Time: 06:49:16 Time On Btm:

Time Off Btm:

TEST COMMENT: B.O.B. in 8 min.
Surface return in 10 min., died in 26 min.
B.O.B. in 20 min.
SSurface blow in 9 min. died in 52 min.



PRESSURE SUMMARY

Time (Min.)	Pressure (psig)	Temp (deg F)	Annotation

Recovery

Length (ft)	Description	Volume (bbl)
31.00	g o c m 35g 10o 55m	0.16
682.00	c g o 35g 65o	9.57
0.00	155' gas in pipe	0.00

* Recovery from multiple tests

Gas Rates

Choke (inches)	Pressure (psig)	Gas Rate (Mcf/d)



**TRILOBITE
TESTING, INC**

DRILL STEM TEST REPORT

TOOL DIAGRAM

Eagle Creek Corp

19-17s-34w Scott,KS

8100 E 22nd St. North BLDG1500 Suite A
Wichita, KS 67226

Barnhart #1-19

Job Ticket: 56348

DST#: 4

ATTN: Gary Gensch

Test Start: 2014.05.06 @ 22:00:23

Tool Information

Drill Pipe:	Length: 4475.00 ft	Diameter: 3.80 inches	Volume: 62.77 bbl	Tool Weight: 1500.00 lb
Heavy Wt. Pipe:	Length: 0.00 ft	Diameter: 0.00 inches	Volume: 0.00 bbl	Weight set on Packer: 25000.00 lb
Drill Collar:	Length: 30.00 ft	Diameter: 2.25 inches	Volume: 0.15 bbl	Weight to Pull Loose: 85000.00 lb
			<u>Total Volume: 62.92 bbl</u>	Tool Chased 0.00 ft
Drill Pipe Above KB:	10.00 ft			String Weight: Initial 62000.00 lb
Depth to Top Packer:	4515.00 ft			Final 66000.00 lb
Depth to Bottom Packer:	ft			
Interval between Packers:	20.00 ft			
Tool Length:	40.00 ft			
Number of Packers:	2	Diameter: 6.75 inches		

Tool Comments:

Tool Description

Tool Description	Length (ft)	Serial No.	Position	Depth (ft)	Accum. Lengths
Change Over Sub	1.00			4496.00	
Shut In Tool	5.00			4501.00	
Hydraulic tool	5.00			4506.00	
Packer	5.00			4511.00	20.00 Bottom Of Top Packer
Packer	4.00			4515.00	
Stubb	1.00			4516.00	
Recorder	0.00	6771	Inside	4516.00	
Recorder	0.00	8844	Outside	4516.00	
Anchor	14.00			4530.00	
Bullnose	5.00			4535.00	20.00 Bottom Packers & Anchor
Total Tool Length:	40.00				



**TRILOBITE
TESTING, INC**

DRILL STEM TEST REPORT

FLUID SUMMARY

Eagle Creek Corp
8100 E 22nd St. North BLDG1500 Suite A
Wichita, KS 67226
ATTN: Gary Gensch

19-17s-34w Scott, KS
Barnhart #1-19
Job Ticket: 56348 **DST#: 4**
Test Start: 2014.05.06 @ 22:00:23

Mud and Cushion Information

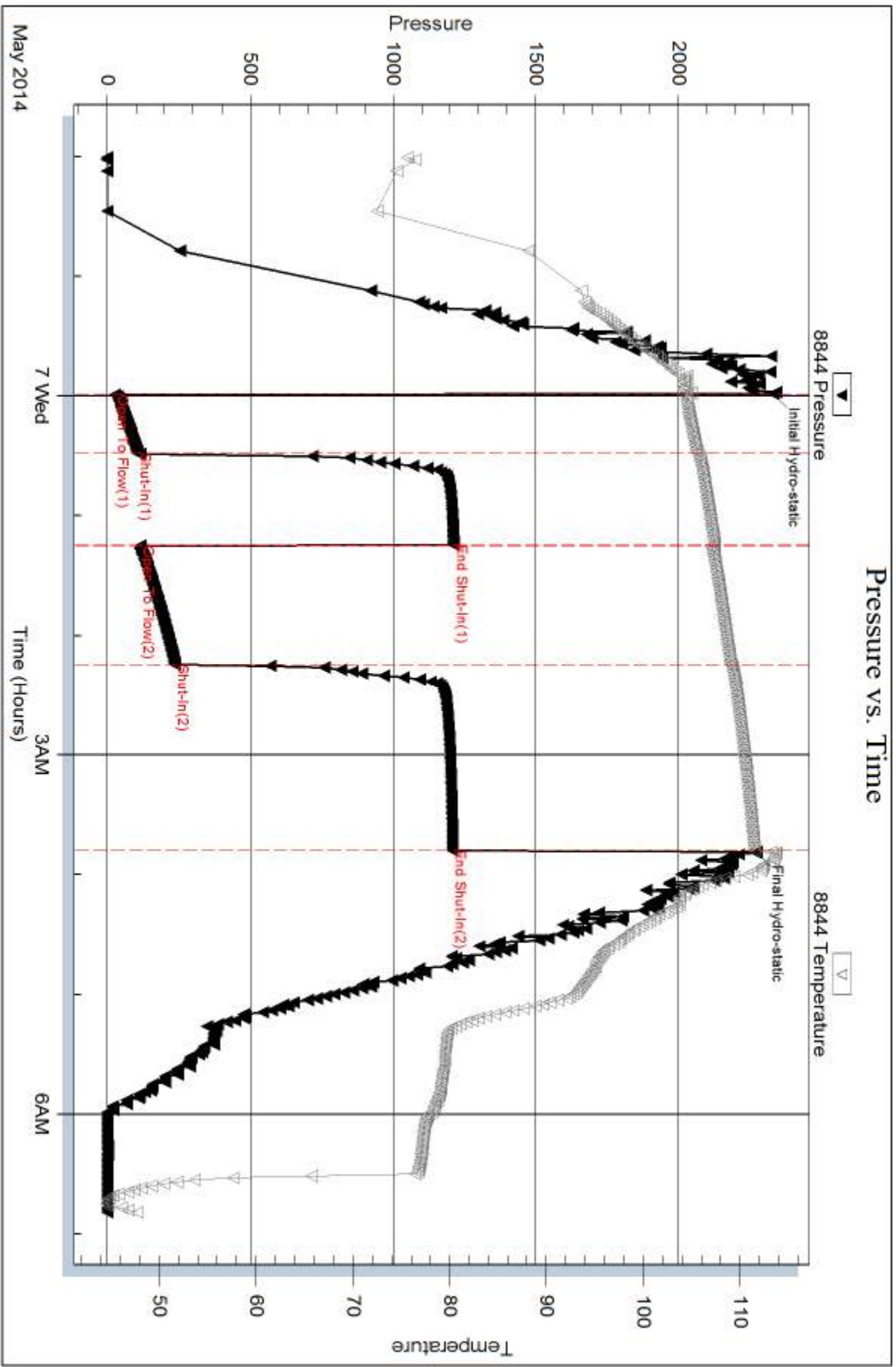
Mud Type: Gel Chem	Cushion Type:	Oil API: 23 deg API
Mud Weight: 9.00 lb/gal	Cushion Length: ft	Water Salinity: 0 ppm
Viscosity: 55.00 sec/qt	Cushion Volume: bbl	
Water Loss: 7.13 in ³	Gas Cushion Type:	
Resistivity: 0.00 ohm.m	Gas Cushion Pressure: psig	
Salinity: 2300.00 ppm		
Filter Cake: 1.00 inches		

Recovery Information

Recovery Table

Length ft	Description	Volume bbl
31.00	g o c m 35g 10o 55m	0.162
682.00	c g o 35g 65o	9.567
0.00	155' gas in pipe	0.000

Total Length: 713.00 ft Total Volume: 9.729 bbl
Num Fluid Samples: 0 Num Gas Bombs: 0 Serial #:
Laboratory Name: Laboratory Location:
Recovery Comments:



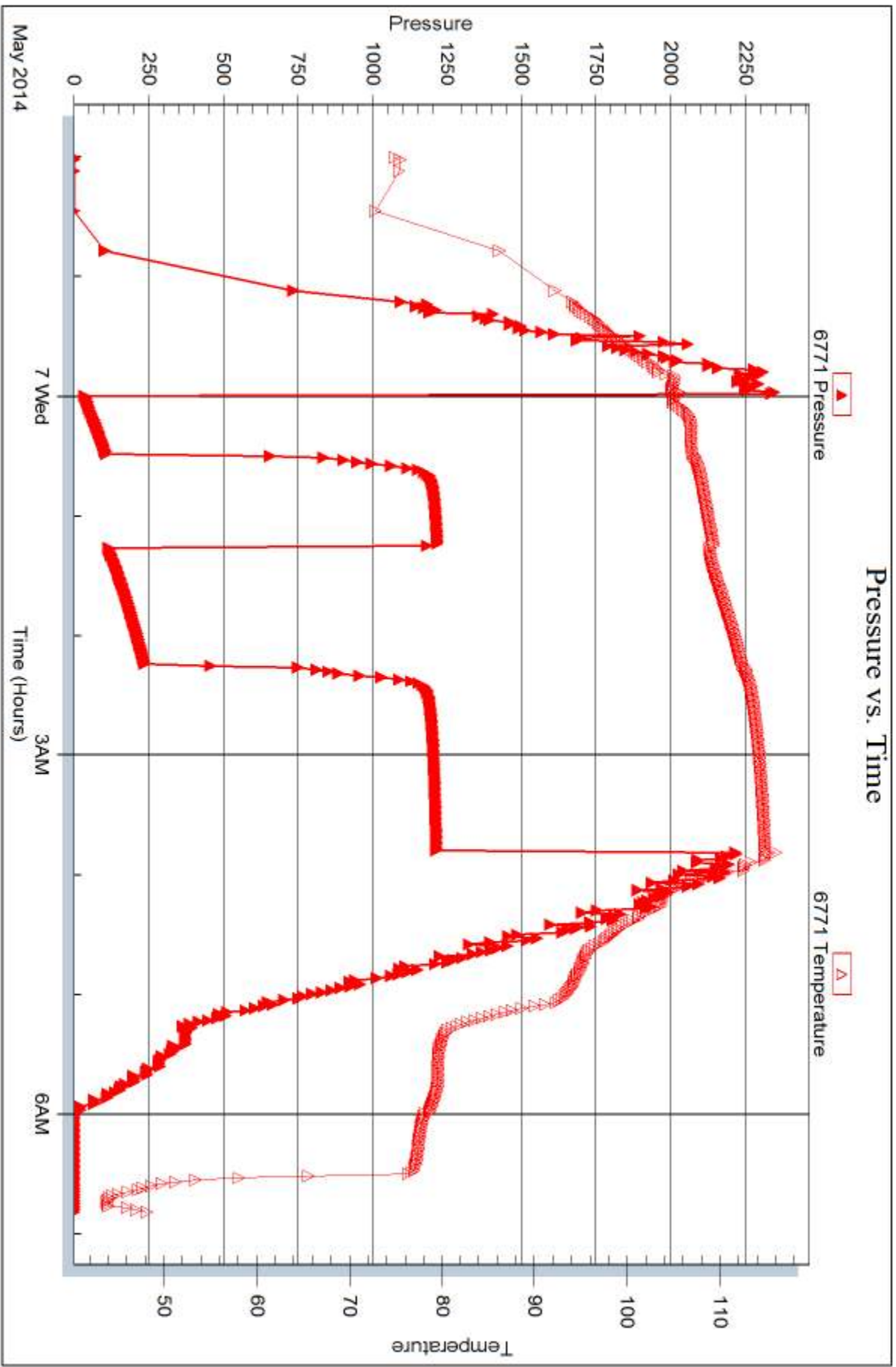
Serial #: 6771

Inside

Eagle Creek Corp

Barnhart #1-19

DST Test Number: 4



Trilobite Testing, Inc

Ref. No: 56348

Printed: 2014.05.13 @ 09:35:59



DRILL STEM TEST REPORT

Prepared For: **Eagle Creek Corp**

8100 E 22nd St. North BLDG1500 Suite A
Wichita, KS 67226

ATTN: Gary Gensch

Barnhart #1-19

19-17s-34w Scott,KS

Start Date: 2014.05.07 @ 20:41:00

End Date: 2014.05.08 @ 02:48:30

Job Ticket #: 56349 DST #: 5

Trilobite Testing, Inc
PO Box 362 Hays, KS 67601
ph: 785-625-4778 fax: 785-625-5620

Printed: 2014.05.13 @ 09:33:28



TRILOBITE TESTING, INC

DRILL STEM TEST REPORT

Eagle Creek Corp
 8100 E 22nd St. North BLDG1500 Suite A
 Wichita, KS 67226
 ATTN: Gary Gensch

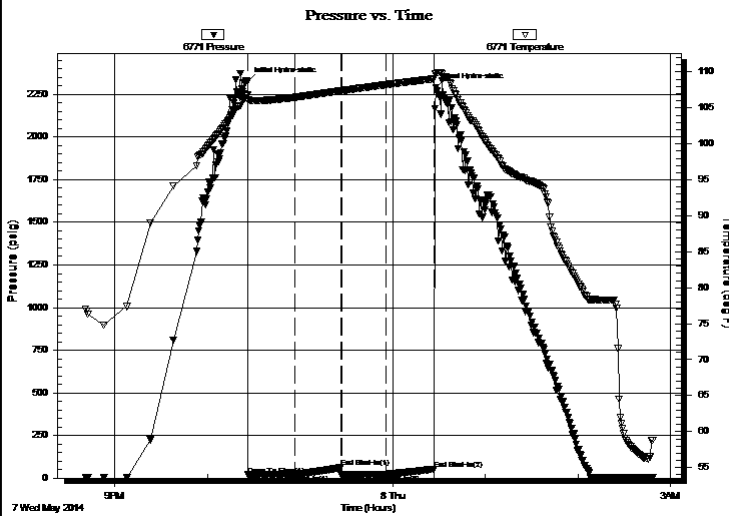
19-17s-34w Scott, KS
Barnhart #1-19
 Job Ticket: 56349 **DST#: 5**
 Test Start: 2014.05.07 @ 20:41:00

GENERAL INFORMATION:

Formation: **Pawnee**
 Deviated: No Whipstock: ft (KB)
 Time Tool Opened: 22:26:15
 Time Test Ended: 02:48:30
 Interval: **4568.00 ft (KB) To 4608.00 ft (KB) (TVD)**
 Total Depth: 4608.00 ft (KB) (TVD)
 Hole Diameter: 7.88 inches Hole Condition: Fair
 Test Type: Conventional Bottom Hole (Reset)
 Tester: Shane McBride
 Unit No: 55
 Reference Elevations: 3144.00 ft (KB)
 3136.00 ft (CF)
 KB to GR/CF: 8.00 ft

Serial #: 6771 Inside
 Press@RunDepth: 23.77 psig @ 4569.00 ft (KB) Capacity: 8000.00 psig
 Start Date: 2014.05.07 End Date: 2014.05.08 Last Calib.: 2014.05.08
 Start Time: 20:41:00 End Time: 02:48:30 Time On Btm: 2014.05.07 @ 22:25:45
 Time Off Btm: 2014.05.08 @ 00:28:00

TEST COMMENT: 1/4" blow died in 17 min.
 No return
 No blow
 No return



PRESSURE SUMMARY

Time (Min.)	Pressure (psig)	Temp (deg F)	Annotation
0	2325.41	106.78	Initial Hydro-static
1	19.61	106.15	Open To Flow (1)
31	21.74	106.47	Shut-In(1)
61	61.77	107.39	End Shut-In(1)
61	21.41	107.39	Open To Flow (2)
90	23.77	108.24	Shut-In(2)
121	53.55	109.05	End Shut-In(2)
123	2287.83	109.81	Final Hydro-static

Recovery

Length (ft)	Description	Volume (bbl)
3.00	s o c m 5%o 95%m	0.01
0.00	show of oil on top 1"	0.00

* Recovery from multiple tests

Gas Rates

Choke (inches)	Pressure (psig)	Gas Rate (Mcf/d)



TRIOLOBITE TESTING, INC

DRILL STEM TEST REPORT

Eagle Creek Corp

19-17s-34w Scott, KS

8100 E 22nd St. North BLDG1500 Suite A
Wichita, KS 67226

Barnhart #1-19

Job Ticket: 56349

DST#: 5

ATTN: Gary Gensch

Test Start: 2014.05.07 @ 20:41:00

GENERAL INFORMATION:

Formation: Pawnee

Deviated: No Whipstock: ft (KB)

Time Tool Opened: 22:26:15

Time Test Ended: 02:48:30

Test Type: Conventional Bottom Hole (Reset)

Tester: Shane McBride

Unit No: 55

Interval: 4568.00 ft (KB) To 4608.00 ft (KB) (TVD)

Total Depth: 4608.00 ft (KB) (TVD)

Hole Diameter: 7.88 inches Hole Condition: Fair

Reference Elevations: 3144.00 ft (KB)

3136.00 ft (CF)

KB to GR/CF: 8.00 ft

Serial #: 8844 Outside

Press@RunDepth: psig @ 4569.00 ft (KB)

Start Date: 2014.05.07

End Date:

2014.05.08

Start Time: 20:40:48

End Time:

02:48:03

Capacity: 8000.00 psig

Last Calib.:

2014.05.08

Time On Btm:

Time Off Btm:

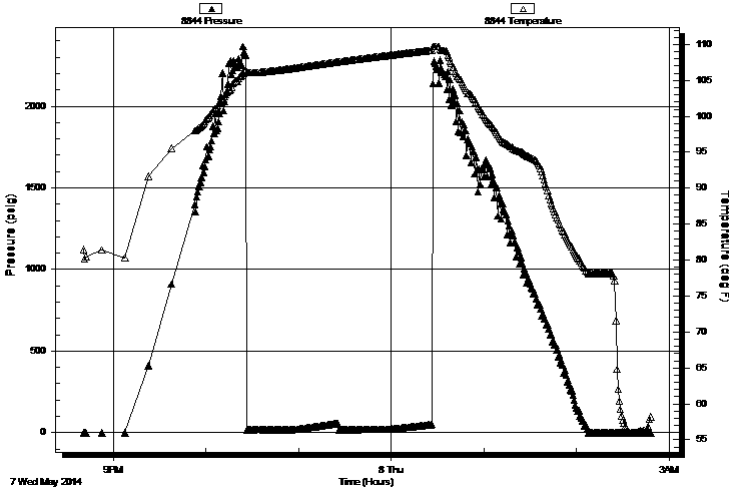
TEST COMMENT: 1/4" blow died in 17 min.

No return

No blow

No return

Pressure vs. Time



PRESSURE SUMMARY

Time (Min.)	Pressure (psig)	Temp (deg F)	Annotation

Recovery

Length (ft)	Description	Volume (bbl)
3.00	s o c m 5% o 95% m	0.01
0.00	show of oil on top 1"	0.00

Gas Rates

	Choke (inches)	Pressure (psig)	Gas Rate (Mcf/d)

* Recovery from multiple tests



**TRILOBITE
TESTING, INC**

DRILL STEM TEST REPORT

TOOL DIAGRAM

Eagle Creek Corp
8100 E 22nd St. North BLDG1500 Suite A
Wichita, KS 67226
ATTN: Gary Gensch

19-17s-34w Scott, KS
Barnhart #1-19
Job Ticket: 56349 **DST#: 5**
Test Start: 2014.05.07 @ 20:41:00

Tool Information

Drill Pipe:	Length: 4538.00 ft	Diameter: 3.80 inches	Volume: 63.66 bbl	Tool Weight: 1500.00 lb
Heavy Wt. Pipe:	Length: 0.00 ft	Diameter: 0.00 inches	Volume: 0.00 bbl	Weight set on Packer: 25000.00 lb
Drill Collar:	Length: 30.00 ft	Diameter: 2.25 inches	Volume: 0.15 bbl	Weight to Pull Loose: 85000.00 lb
			<u>Total Volume: 63.81 bbl</u>	Tool Chased 0.00 ft
Drill Pipe Above KB:	20.00 ft			String Weight: Initial 64000.00 lb
Depth to Top Packer:	4568.00 ft			Final 64000.00 lb
Depth to Bottom Packer:	ft			
Interval between Packers:	40.00 ft			
Tool Length:	60.00 ft			
Number of Packers:	2	Diameter: 6.75 inches		

Tool Comments:

Tool Description

Tool Description	Length (ft)	Serial No.	Position	Depth (ft)	Accum. Lengths
Change Over Sub	1.00			4549.00	
Shut In Tool	5.00			4554.00	
Hydraulic tool	5.00			4559.00	
Packer	5.00			4564.00	20.00 Bottom Of Top Packer
Packer	4.00			4568.00	
Stubb	1.00			4569.00	
Recorder	0.00	6771	Inside	4569.00	
Recorder	0.00	8844	Outside	4569.00	
Anchor	34.00			4603.00	
Bullnose	5.00			4608.00	40.00 Bottom Packers & Anchor
Total Tool Length:	60.00				



**TRILOBITE
TESTING, INC**

DRILL STEM TEST REPORT

FLUID SUMMARY

Eagle Creek Corp

19-17s-34w Scott,KS

8100 E 22nd St.North BLDG1500 Suite A
Wichita, KS 67226

Barnhart #1-19

Job Ticket: 56349

DST#: 5

ATTN: Gary Gensch

Test Start: 2014.05.07 @ 20:41:00

Mud and Cushion Information

Mud Type: Gel Chem

Cushion Type:

Oil API:

0 deg API

Mud Weight: 9.00 lb/gal

Cushion Length:

ft

Water Salinity:

0 ppm

Viscosity: 55.00 sec/qt

Cushion Volume:

bbbl

Water Loss: 7.14 in³

Gas Cushion Type:

Resistivity: 0.00 ohm.m

Gas Cushion Pressure:

psig

Salinity: 2300.00 ppm

Filter Cake: 1.00 inches

Recovery Information

Recovery Table

Length ft	Description	Volume bbl
3.00	s o c m 5%o 95%m	0.015
0.00	show of oil on top 1"	0.000

Total Length: 3.00 ft Total Volume: 0.015 bbl

Num Fluid Samples: 0

Num Gas Bombs: 0

Serial #:

Laboratory Name:

Laboratory Location:

Recovery Comments:

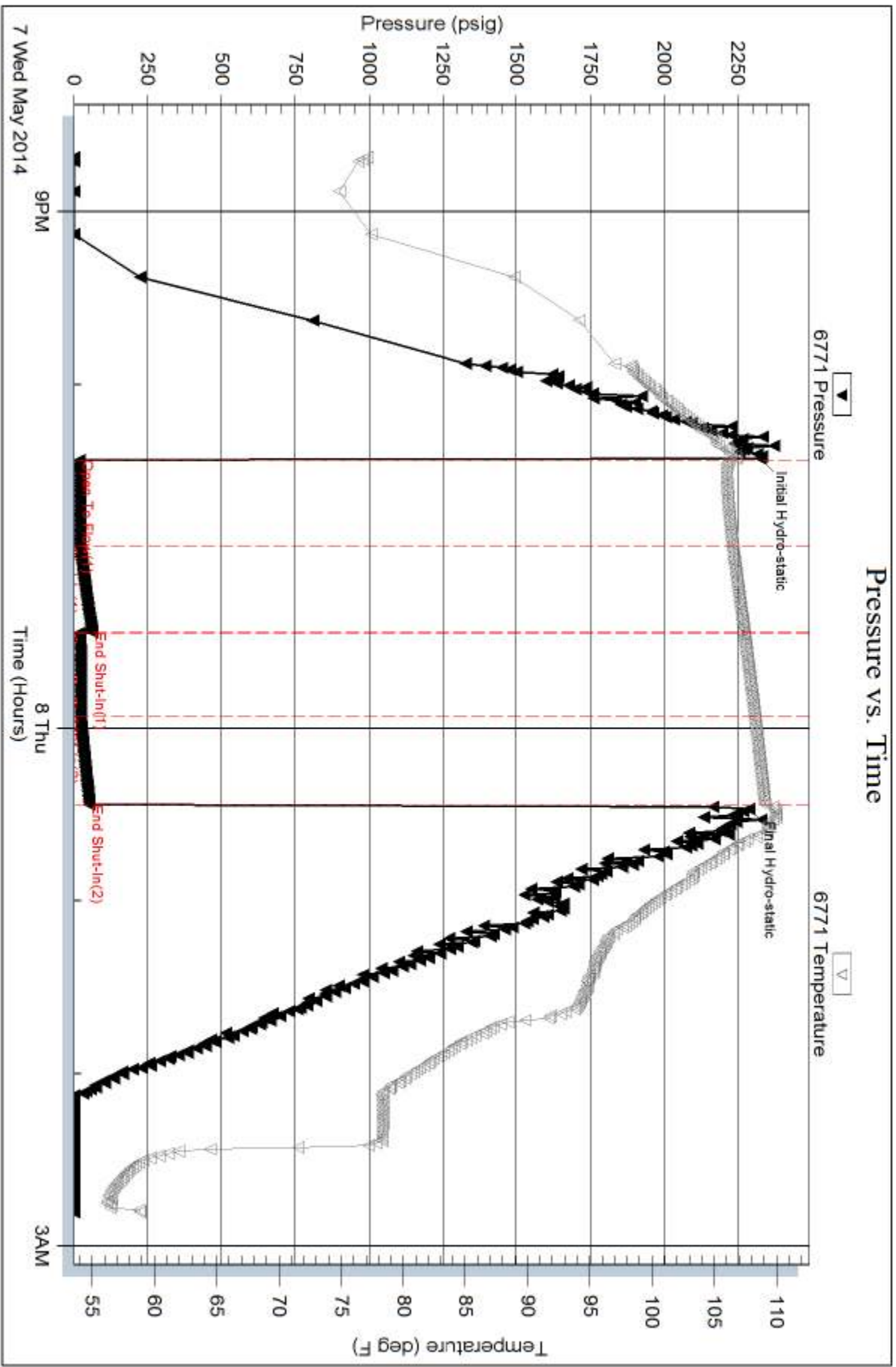
Serial #: 6771

Inside

Eagle Creek Corp

Barnhart #1-19

DST Test Number: 5

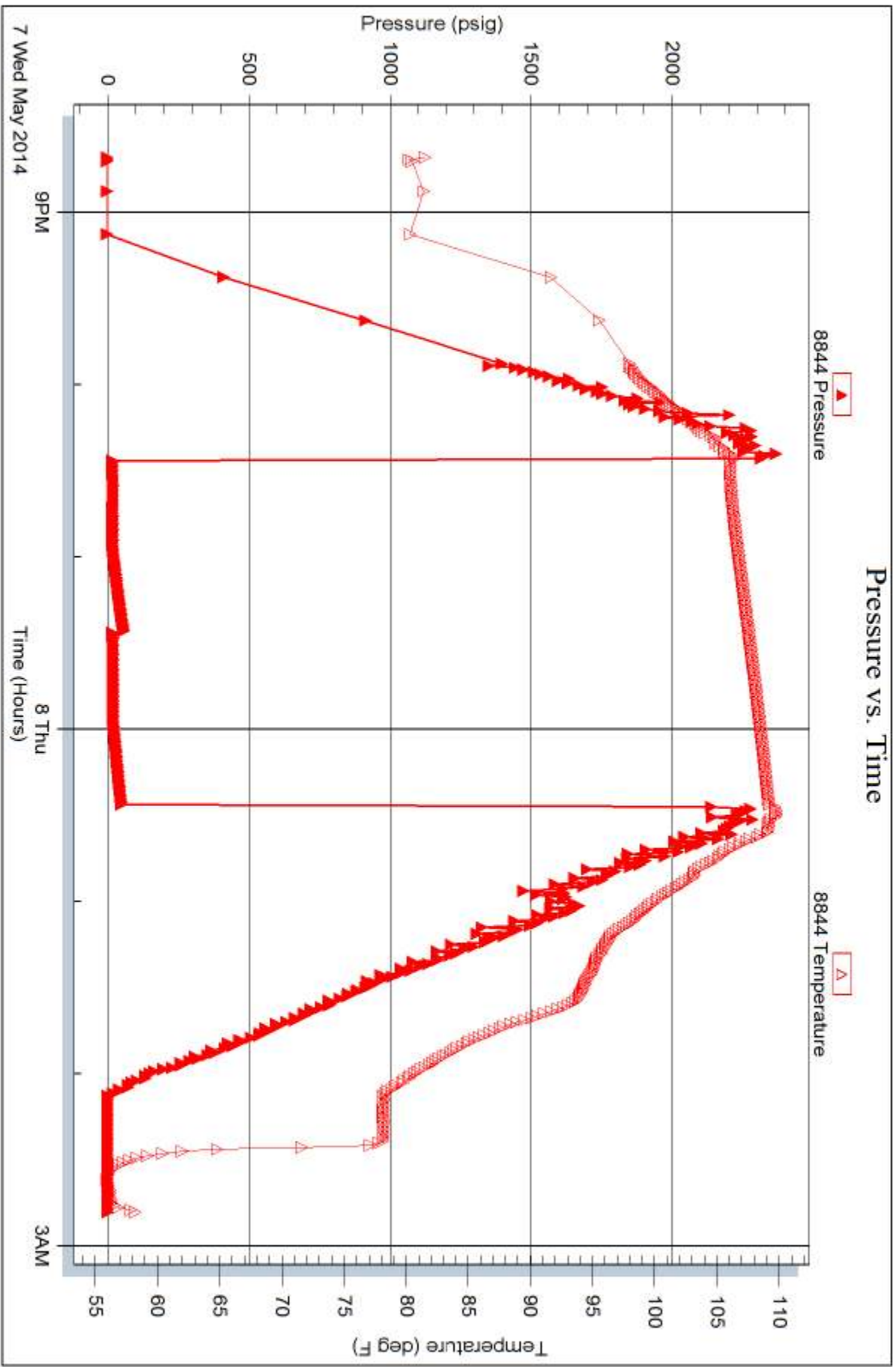


Serial #: 8844

Outside Eagle Creek Corp

Barnhart #1-19

DST Test Number: 5





TRILOBITE TESTING INC.

1515 Commerce Parkway • Hays, Kansas 67601

Test Ticket

NO. 56345

Well Name & No. Barnhart #1-19 Test No. #1 Date 5/4/14
 Company Eagle Creek Corporation Elevation 3144 KB 3136 GL
 Address 8100 E 22nd St North - BLDG 1500 Sweetwater, Wichita, KS 67226
 Co. Rep / Geol. Dave Collewant / Gary Gensch Rig Val # 4
 Location: Sec. 19 Twp. 17S Rge. 34W Co. Scott State Ks

Interval Tested 4272 4312 Zone Tested LKC "I"
 Anchor Length 40 Drill Pipe Run 4254 Mud Wt. 9.3
 Top Packer Depth 4267 Drill Collars Run 30' Vis 55
 Bottom Packer Depth 4272 Wt. Pipe Run --- WL 7.2
 Total Depth 4312 Chlorides 2300 ppm System LCM #3

Blow Description Surface blow died on 11 min
No return
No blow
No return

Rec	Feet of	%gas	%oil	%water	%mud
<u>5'</u>	<u>Mud w/oil scum</u>		<u>Scum</u>		<u>100</u>
	<u>Show of free oil on top 1/2 in</u>				

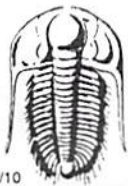
Rec Total 5' BHT 107° Gravity --- API RW --- @ --- ° F Chlorides --- ppm

(A) Initial Hydrostatic 2143 Test 1250 T-On Location 10:15
 (B) First Initial Flow 18 Jars --- T-Started 11:40
 (C) First Final Flow 21 Safety Joint --- T-Open 13:58
 (D) Initial Shut-In 919 Circ Sub N/C T-Pulled 15:58
 (E) Second Initial Flow 23 Hourly Standby --- T-Out 17:50
 (F) Second Final Flow 24 Mileage 43 RT 66.65
 (G) Final Shut-In 811 Sampler ---
 (H) Final Hydrostatic 2126 Straddle --- Ruined Shale Packer ---
 Shale Packer --- Ruined Packer ---

Initial Open 30 Extra Packer --- Extra Copies ---
 Initial Shut-In 30 Extra Recorder --- Sub Total 0
 Final Flow 30 Day Standby --- Total 1316.65
 Final Shut-In 30 Accessibility 150.00 MP/DST Disc't ---
 Sub Total 1316.65

Approved By Gary Gensch Our Representative [Signature]

TriLOBite Testing Inc. shall not be liable for damaged of any kind of the property or personnel of the one for whom a test is made, or for any loss suffered or sustained, directly or indirectly, through the use of its equipment, or its statements or opinion concerning the results of any test, tools lost or damaged in the hole shall be paid for at cost by the party for whom the test is made.



TRILOBITE TESTING INC.

1515 Commerce Parkway • Hays, Kansas 67601

Test Ticket

NO. 56346

4/10

Well Name & No. Barnhart #1-19 Test No. #2 Date 5/5/14
 Company Eagle Creek Corporation Elevation 3144 KB 3136 GL
 Address 8100 E 22nd St North BLDG-1300 Suite B Wichita, KS 67224
 Co. Rep / Geo. Gary Gensel Rig Val #4
 Location: Sec. 19 Twp. 17S Rge. 34W Co. Scott State KS

Interval Tested 4328 4355 Zone Tested Lower J - upper K
 Anchor Length 27 Drill Pipe Run 4288 Mud Wt. 9.3
 Top Packer Depth 4323 Drill Collars Run 30' Vis 55
 Bottom Packer Depth 4328 Wt. Pipe Run — WL 7.2
 Total Depth 4355 Chlorides 2300 ppm System LCM #3

Blow Description 1/4" in blow, dried in 17 min
No return
No blow
No return

Rec	Feet of	%gas	%oil	%water	%mud
<u>5'</u>	<u>Free Oil (TAR)</u>		<u>100%</u>		
<u>15'</u>	<u>mud w/ Tar balls</u>		<u>Spots</u>		<u>100%</u>
Rec	Feet of	%gas	%oil	%water	%mud
Rec	Feet of	%gas	%oil	%water	%mud
Rec	Feet of	%gas	%oil	%water	%mud

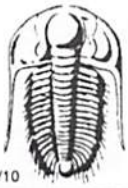
Rec Total 20' BHT 107° Gravity — API RW — @ — ° F Chlorides — ppm

(A) Initial Hydrostatic 2205 Test 1250 T-On Location 03:35
 (B) First Initial Flow 15 Jars — T-Started 03:50
 (C) First Final Flow 24 Safety Joint — T-Open 05:45
 (D) Initial Shut-In 1031 Circ Sub N/C T-Pulled 07:45
 (E) Second Initial Flow 27 Hourly Standby — T-Out 10:05
 (F) Second Final Flow 28 Mileage 43 RT 66.65 Comments —
 (G) Final Shut-In 1002 Sampler —
 (H) Final Hydrostatic 2144 Straddle — Ruined Shale Packer —
 Shale Packer — Ruined Packer —

Initial Open 30 Extra Packer — Extra Copies —
 Initial Shut-In 30 Extra Recorder — Sub Total 0
 Final Flow 30 Day Standby — Total 1316.65
 Final Shut-In 30 Accessibility B 150⁰⁰ MP/DST Disc't —
 Sub Total 1316.65

Approved By Gary Gensel Our Representative [Signature]

Trilobite Testing Inc. shall not be liable for damaged of any kind of the property or personnel of the one for whom a test is made, or for any loss suffered or sustained, directly or indirectly, through the use of its equipment, or its statements or opinion concerning the results of any test, tools lost or damaged in the hole shall be paid for at cost by the party for whom the test is made.



TRILOBITE TESTING INC.

1515 Commerce Parkway • Hays, Kansas 67601

Test Ticket

NO. 56347

Well Name & No. Barnhart #1-19 Test No. #3 Date 3/6/14
 Company Eagle Creek Corporation Elevation 3144 KB 3136 GL
 Address 8100 E 22nd St North BLDG 1500 Suite A Wichita, KS 67224
 Co. Rep / Geo. GARY Gensch Rig Val #4
 Location: Sec. 19 Twp. 17S Rge. 34W Co. Scott State Ks

Interval Tested 4457 4514 Zone Tested Marmaton A-B
 Anchor Length 57 Drill Pipe Run 4438' Mud Wt. 9.5
 Top Packer Depth 4452 Drill Collars Run 30' Vis 42
 Bottom Packer Depth 4457 Wt. Pipe Run — WL 10.8
 Total Depth 4514 Chlorides 8,000 ppm System LCM #1

Blow Description B.O.B. in 12 min | Rec: 186' 10 gas 100 oil 80 water mud
No return | Rec: gas oil water mud
B.O.B. in 18 min | (90' used GAS in pipe)
No return

Rec	Feet of Spg	%gas	%oil	%water	%mud
<u>10</u>	<u>590cm</u>	<u>5</u>	<u>95</u>	<u>—</u>	<u>—</u>
<u>83</u>	<u>590cm</u>	<u>5</u>	<u>10</u>	<u>—</u>	<u>85</u>
<u>124</u>	<u>590 3/4 cm</u>	<u>5</u>	<u>10</u>	<u>10</u>	<u>75</u>
<u>124</u>	<u>60 3/4 cm</u>	<u>10</u>	<u>20</u>	<u>20</u>	<u>50</u>
<u>124</u>	<u>60 3/4 cm</u>	<u>10</u>	<u>15</u>	<u>55</u>	<u>20</u>

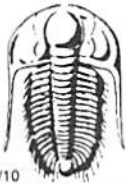
Rec Total 651 BHT 117 Gravity 30 API RW 176 @ 97 °F Chlorides 28,500 ppm

(A) Initial Hydrostatic 2351 Test 1250 T-On Location 04:35
 (B) First Initial Flow 48 Jars _____ T-Started 05:02
 (C) First Final Flow 176 Safety Joint _____ T-Open 07:02
 (D) Initial Shut-In 1098 Circ Sub N/C T-Pulled 10:47
 (E) Second Initial Flow 186 Hourly Standby _____ T-Out 13:58
 (F) Second Final Flow 322 Mileage 43 RT 66.65 Comments _____
 (G) Final Shut-In 1024 Sampler _____
 (H) Final Hydrostatic 2271 Straddle _____ Ruined Shale Packer _____
 Shale Packer _____ Ruined Packer _____
 Extra Packer _____ Extra Copies _____
 Extra Recorder _____

Initial Open 30
 Initial Shut-In 45
 Final Flow 60
 Final Shut-In 90
 Accessibility 150"
 Sub Total 1316.65
 Sub Total 0
 Total 1316.65
 MP/DST Disc't _____

Approved By Gary Gensch Our Representative [Signature]

Trilobite Testing Inc. shall not be liable for damaged of any kind of the property or personnel of the one for whom a test is made, or for any loss suffered or sustained, directly or indirectly, through the use of its equipment, or its statements or opinion concerning the results of any test, tools lost or damaged in the hole shall be paid for at cost by the party for whom the test is made.



TRILOBITE TESTING INC.

1515 Commerce Parkway • Hays, Kansas 67601

Test Ticket

NO. 56348

4/10

Well Name & No. Barnhart # 1-19 Test No. #4 Date 5/7/14
 Company Eagle Creek Corporation Elevation 3144 KB 31310 GL
 Address 8100 E 22nd St. North. BLDG 1500 Suite # Wichita, KS 67226
 Co. Rep / Geo. Gary Gensch Rig Val #4
 Location: Sec. 19 Twp. 17 Rge. 34w Co. Scott State Ks

Interval Tested 4515 4535 Zone Tested Marmaton C
 Anchor Length 20 Drill Pipe Run 4475' Mud Wt. 9.3
 Top Packer Depth 4510 Drill Collars Run 30' Vis 42
 Bottom Packer Depth 4515 Wt. Pipe Run --- WL 10.8
 Total Depth 4535 Chlorides 8,000 ppm System LCM #1

Blow Description B.O.B. in 8 min
Surface return in 9 min. died in 20 min.
B.O.B. in 20 min.

Surface return in 9 min died in 52 min

Rec	Feet of	%gas	%oil	%water	%mud
<u>682'</u>	<u>090</u>	<u>35</u>	<u>65</u>		
<u>31'</u>	<u>gocm</u>	<u>35</u>	<u>10</u>		<u>55</u>
Rec	Feet of	%gas	%oil	%water	%mud
Rec	Feet of <u>(155 GAS in pipe?)</u>	%gas	%oil	%water	%mud
Rec	Feet of <u>No smell</u>	%gas	%oil	%water	%mud

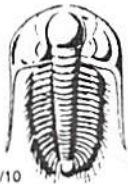
Rec Total 713' BHT 113° Gravity 23 API RW --- @ --- °F Chlorides --- ppm

(A) Initial Hydrostatic	<u>2331</u>	<input checked="" type="checkbox"/> Test	<u>1250</u>	T-On Location	<u>21:15</u>
(B) First Initial Flow	<u>26</u>	<input type="checkbox"/> Jars		T-Started	<u>22:00</u>
(C) First Final Flow	<u>105</u>	<input type="checkbox"/> Safety Joint		T-Open	<u>23:57</u>
(D) Initial Shut-In	<u>1212</u>	<input checked="" type="checkbox"/> Circ Sub	<u>N/C</u>	T-Pulled	<u>03:42</u>
(E) Second Initial Flow	<u>114</u>	<input type="checkbox"/> Hourly Standby		T-Out	<u>@ 06:55</u>
(F) Second Final Flow	<u>235</u>	<input checked="" type="checkbox"/> Mileage	<u>43RT</u> 66.65	Comments	
(G) Final Shut-In	<u>1208</u>	<input type="checkbox"/> Sampler			
(H) Final Hydrostatic	<u>2273</u>	<input type="checkbox"/> Straddle		<input type="checkbox"/> Ruined Shale Packer	

Initial Open	<u>30</u>	<input type="checkbox"/> Shale Packer		<input type="checkbox"/> Ruined Packer	
Initial Shut-In	<u>45</u>	<input type="checkbox"/> Extra Packer		<input type="checkbox"/> Extra Copies	
Final Flow	<u>100</u>	<input type="checkbox"/> Extra Recorder		Sub Total	<u>0</u>
Final Shut-In	<u>90</u>	<input type="checkbox"/> Day Standby		Total	<u>1316.65</u>
		<input checked="" type="checkbox"/> Accessibility		MP/DST Disc't	
		Sub Total	<u>1316.65</u>		

Approved By Gary Gensch Our Representative [Signature]

Trilobite Testing Inc. shall not be liable for damaged of any kind of the property or personnel of the one for whom a test is made, or for any loss suffered or sustained, directly or indirectly, through the use of its equipment, or its statements or opinion concerning the results of any test, tools lost or damaged in the hole shall be paid for at cost by the party for whom the test is made.



TRILOBITE TESTING INC.

1515 Commerce Parkway • Hays, Kansas 67601

Test Ticket

NO. 56349

Well Name & No. Barnhart #1-19 Test No. #5 Date 5/8/14
 Company Eagle Creek Corporation Elevation 3144 KB 3136 GL
 Address 8100 E 22nd St. North BLDG 1500 Suite A Wichita, KS 67226
 Co. Rep / Geo. Gary Gensch Rig Val #4
 Location: Sec. 19 Twp. 17S Rge. 34W Co. Scott State Ks

Interval Tested 4568 4608 Zone Tested Paucal
 Anchor Length 40 Drill Pipe Run 4538 Mud Wt. 9.3
 Top Packer Depth 4563 Drill Collars Run 30' Vis 65
 Bottom Packer Depth 4568 Wt. Pipe Run --- WL 10.0
 Total Depth 4608 Chlorides 9000 ppm System LCM #1

Blow Description 1/4" blow died in 17 min.
No return
No blow
No return

Rec	Feet of	%gas	%oil	%water	%mud
3'	50cm	5		95	
	show FOI on top 1"				

Rec Total 3' BHT 110° Gravity --- API RW --- @ --- °F Chlorides --- ppm

(A) Initial Hydrostatic 2325 Test 1250 T-On Location 20:10
 (B) First Initial Flow 19 Jars --- T-Started 20:40
 (C) First Final Flow 21 Safety Joint --- T-Open 22:13
 (D) Initial Shut-In 61 Circ Sub N/E T-Pulled 00:15
 (E) Second Initial Flow 21 Hourly Standby --- T-Out 02:45
 (F) Second Final Flow 23 Mileage 43 RT 133.30 Comments Released & picked up tools @ 01:15 5/9/14
 (G) Final Shut-In 53 Sampler ---
 (H) Final Hydrostatic 2287 Straddle --- Ruined Shale Packer ---
 Shale Packer --- Ruined Packer ---
 Extra Packer --- Extra Copies ---
 Extra Recorder --- Sub Total 0
 Day Standby --- Total 1383.30
 Accessibility --- MP/DST Disc't ---
 Sub Total 1383.30

Approved By Gary Gensch Our Representative [Signature]

Trilobite Testing Inc. shall not be liable for damaged of any kind of the property or personnel of the one for whom a test is made, or for any loss suffered or sustained, directly or indirectly, through the use of its equipment, or its statements or opinion concerning the results of any test, tools lost or damaged in the hole shall be paid for at cost by the party for whom the test is made.