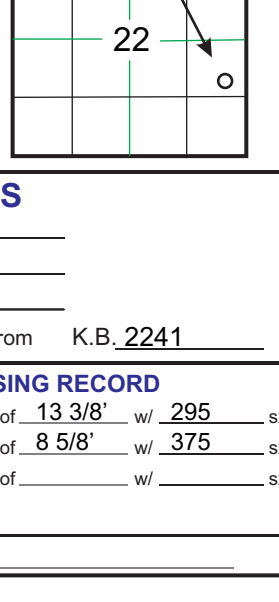


GEOLOGICAL REPORT

Larry A. Nicholson

37.415531
-99.392118

COMPANY	McCoy Petroleum	FIELD	Alford
API #	15-097-21789	CORP.	K.B. 2241
LEASE	MTPRC 'B'	D.F.	
LOCATION	SE NE SE	G.L.	2232
SECTION	1650' FSL 330' FEL	All measurements from K.B. 2241	
SURVEY	1650' FSL 330' FEL		
SECTION	22 TWP 30S		
COUNTY	Kiowa		
STATE	Ks		



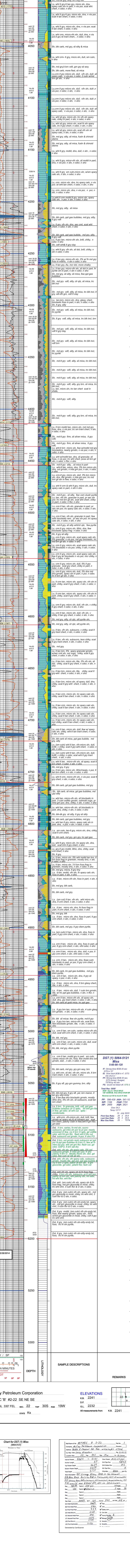
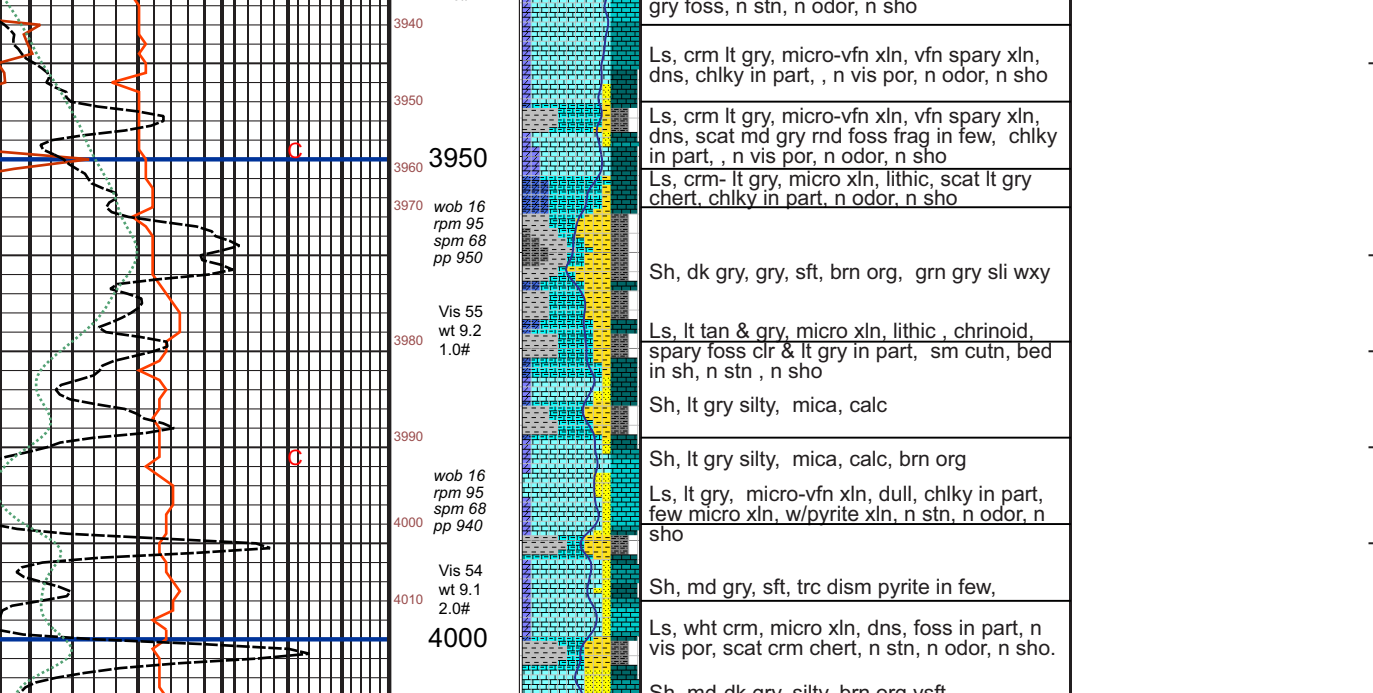
CONTRACTOR	Stirling Drilling	Rig #	4	ELEVATIONS	
SPUD	03/20/14 at 2:30 pm	K.B.	2241		
RTD	5:20 5:15 pm 3-28-14	LT	5198		
MUD UP AT	3556				
MUD TYPE	Chemical MudCo				

FORMATION	SAMPLE TOPS	SURFACE DATUM	ELEC LOG TOPS	SURSEA DIAL	REFERENCE WELL
					A
					B

REMARKS & RECOMMENDATIONS:
Based on dst results and sample shows 5 1/2 csg was set.
***Note ROP Gas, DST need to move up 3' to match log**
***TOPS are log tops**
***DST #1 5064-5121 GeoReport**
***DST #1 5061-5116 LOG**

LAN 792, Modified 5:05, 11/11, 4/12 Hanover, KS 66645 1inch = 25.4mm 8.5 x 9.5 216 mm x 2400 mm

LEGEND



COMPANY	McCoy Petroleum Corporation	ELEVATIONS	K.B. 2241
LEASE	MTPRC 'B' #2-22 NE SE	D.F.	
LOCATION	1650' FSL 330' FEL	G.L.	2232
SECTION	22 TWP 30S	All measurements from K.B. 2241	
COUNTY	Kiowa		
STATE	Ks		

