



DRILL STEM TEST REPORT

Prepared For: **McCoy Petroleum Corporation**

8080 E Central Ste 300
Wichita, KS 67206

ATTN: Larry Nicholson

MTPRC B #2-22

22-30s-19w Kiowa,KS

Start Date: 2014.03.27 @ 19:03:24

End Date: 2014.03.28 @ 07:32:39

Job Ticket #: 51974 DST #: 1

Trilobite Testing, Inc

PO Box 362 Hays, KS 67601

ph: 785-625-4778 fax: 785-625-5620

Printed: 2014.04.01 @ 16:42:02



**TRILOBITE
TESTING, INC**

DRILL STEM TEST REPORT

McCoy Petroleum Corporation

22-30s-19w Kiowa,KS

8080 E Central Ste 300
Wichita, KS 67206

MTPRC B #2-22

Job Ticket: 51974

DST#: 1

ATTN: Larry Nicholson

Test Start: 2014.03.27 @ 19:03:24

GENERAL INFORMATION:

Formation: **Mississippi**

Deviated: No Whipstock: ft (KB)

Time Tool Opened: 21:26:24

Time Test Ended: 07:32:39

Test Type: Conventional Bottom Hole (Initial)

Tester: Leal Cason

Unit No: 74

Interval: 5064.00 ft (KB) To 5121.00 ft (KB) (TVD)

Reference Elevations: 2241.00 ft (KB)

Total Depth: 5121.00 ft (KB) (TVD)

2232.00 ft (CF)

Hole Diameter: 7.88 inches Hole Condition: Good

KB to GR/CF: 9.00 ft

Serial #: 6798

Inside

Press@RunDepth: 1072.65 psig @ 5065.00 ft (KB)

Capacity: 8000.00 psig

Start Date: 2014.03.27

End Date:

2014.03.28

Last Calib.:

2014.03.28

Start Time: 19:03:25

End Time:

07:32:39

Time On Btm:

2014.03.27 @ 21:25:09

Time Off Btm:

2014.03.28 @ 02:42:24

TEST COMMENT:

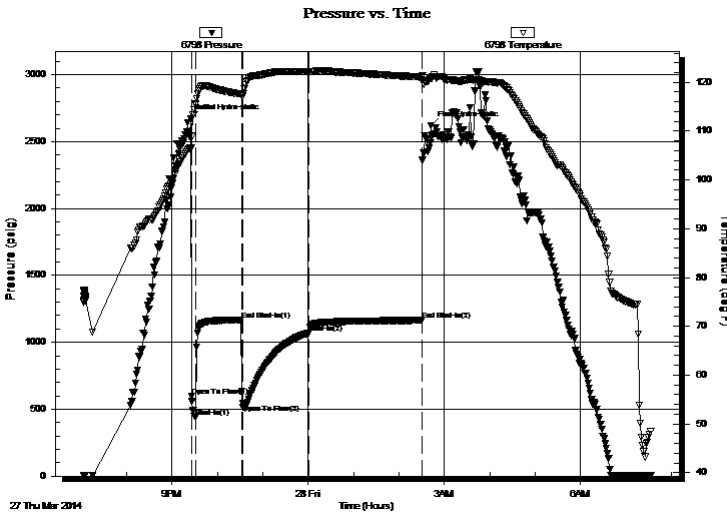
IF: Strong Blow , BOB in 20 seconds

IS: Blow Back Built to BOB in 4 minutes, GTS 12 minutes into Shut In

FF: Strong Blow , BOB in 20 seconds, GTS Immediate, Gauged W/ Merla, TSTM by 40 Minutes, Caught Sample

FSI Would Not Bleed Off, OTS in 28 minutes

PRESSURE SUMMARY



Time (Min.)	Pressure (psig)	Temp (deg F)	Annotation
0	2668.79	106.63	Initial Hydro-static
2	596.10	106.67	Open To Flow (1)
7	438.55	115.55	Shut-In(1)
67	1167.53	117.59	End Shut-In(1)
69	540.94	117.19	Open To Flow (2)
157	1072.65	122.23	Shut-In(2)
306	1164.38	121.07	End Shut-In(2)
318	2621.10	120.85	Final Hydro-static

Recovery

Length (ft)	Description	Volume (bbl)
120.00	GOWCM 5%G 5%W 30%O 60%M	0.59
4939.00	GSY Oil 10%G 90%O	68.41

Gas Rates

	Choke (inches)	Pressure (psig)	Gas Rate (Mcf/d)



**TRILOBITE
TESTING, INC**

DRILL STEM TEST REPORT

TOOL DIAGRAM

McCoy Petroleum Corporation

22-30s-19w Kiowa,KS

8080 E Central Ste 300
Wichita, KS 67206

MTPRC B #2-22

Job Ticket: 51974

DST#: 1

ATTN: Larry Nicholson

Test Start: 2014.03.27 @ 19:03:24

Tool Information

Drill Pipe:	Length: 4843.00 ft	Diameter: 3.80 inches	Volume: 67.93 bbl	Tool Weight: 2100.00 lb
Heavy Wt. Pipe:	Length: 0.00 ft	Diameter: 0.00 inches	Volume: 0.00 bbl	Weight set on Packer: 25000.00 lb
Drill Collar:	Length: 216.00 ft	Diameter: 2.25 inches	Volume: 1.06 bbl	Weight to Pull Loose: 120000.0 lb
			<u>Total Volume: 68.99 bbl</u>	Tool Chased ft
Drill Pipe Above KB:	21.00 ft			String Weight: Initial 95000.00 lb
Depth to Top Packer:	5064.00 ft			Final 110000.0 lb
Depth to Bottom Packer:	ft			
Interval between Packers:	57.00 ft			
Tool Length:	83.00 ft			
Number of Packers:	2	Diameter: 6.75 inches		

Tool Comments:

Tool Description	Length (ft)	Serial No.	Position	Depth (ft)	Accum. Lengths
------------------	-------------	------------	----------	------------	----------------

Shut In Tool	5.00			5043.00	
Hydraulic tool	5.00			5048.00	
Jars	5.00			5053.00	
Safety Joint	2.00			5055.00	
Packer	5.00			5060.00	26.00 Bottom Of Top Packer
Packer	4.00			5064.00	
Stubb	1.00			5065.00	
Recorder	0.00	6798	Inside	5065.00	
Recorder	0.00	8367	Outside	5065.00	
Perforations	4.00			5069.00	
Change Over Sub	1.00			5070.00	
Drill Pipe	32.00			5102.00	
Change Over Sub	1.00			5103.00	
Perforations	15.00			5118.00	
Bullnose	3.00			5121.00	57.00 Bottom Packers & Anchor

Total Tool Length: 83.00



**TRILOBITE
TESTING, INC**

DRILL STEM TEST REPORT

FLUID SUMMARY

McCoy Petroleum Corporation

22-30s-19w Kiowa,KS

8080 E Central Ste 300
Wichita, KS 67206

MTPRC B #2-22

Job Ticket: 51974

DST#: 1

ATTN: Larry Nicholson

Test Start: 2014.03.27 @ 19:03:24

Mud and Cushion Information

Mud Type: Gel Chem

Cushion Type:

Oil API:

deg API

Mud Weight: 10.00 lb/gal

Cushion Length:

ft

Water Salinity:

34 ppm

Viscosity: 45.00 sec/qt

Cushion Volume:

bbbl

Water Loss: 9.59 in³

Gas Cushion Type:

Resistivity: ohm.m

Gas Cushion Pressure:

psig

Salinity: 5000.00 ppm

Filter Cake: 0.02 inches

Recovery Information

Recovery Table

Length ft	Description	Volume bbl
120.00	GOWCM 5%G 5%W 30%O 60%M	0.590
4939.00	GSY Oil 10%G 90%O	68.407

Total Length: 5059.00 ft Total Volume: 68.997 bbl

Num Fluid Samples: 0

Num Gas Bombs: 0

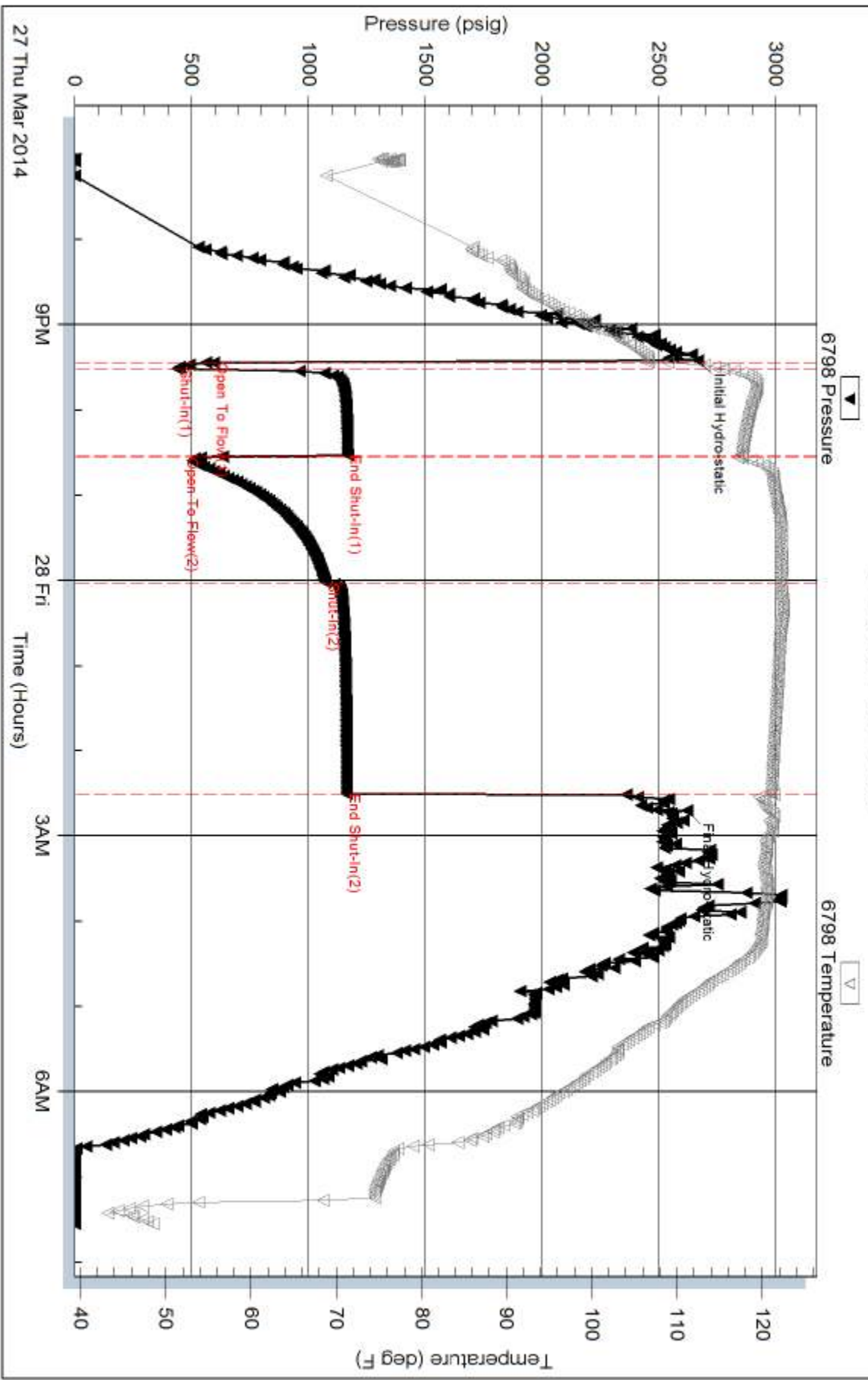
Serial #:

Laboratory Name:

Laboratory Location:

Recovery Comments: Gravity Was 32 @ 38 degrees

Pressure vs. Time

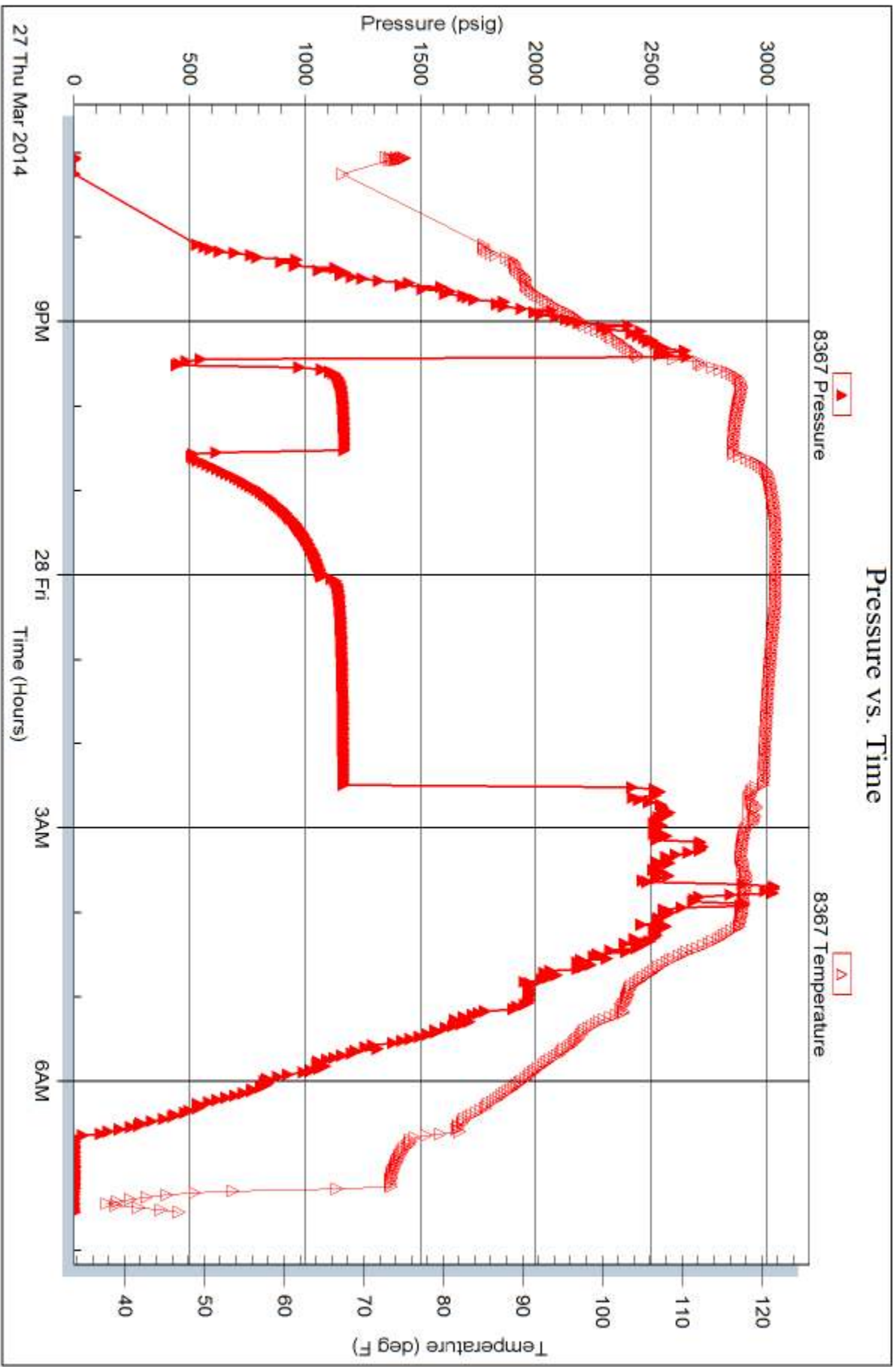


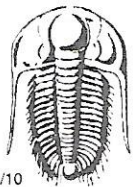
Serial #: 8367

Outside McCoy Petroleum Corporation

MTRRC B #2-22

DST Test Number: 1





TRILOBITE TESTING INC.

1515 Commerce Parkway • Hays, Kansas 67601

Test Ticket

NO. 51974

Well Name & No. MTPRC B 2-22 Test No. 1 Date 03/27/14
 Company McCoy Petroleum Corporation Elevation 2241 KB 2232 GL
 Address 8080 E Central Ste 300 Wichita, KS 67206
 Co. Rep / Geo. Larry Nicholson Rig Sterling 4
 Location: Sec. 22 Twp. 30S Rge. 19W Co. Kiowa State KS

Interval Tested 5064 - 5121 Zone Tested Mississippi
 Anchor Length 57 Drill Pipe Run 4843 Mud Wt. 9.6
 Top Packer Depth 5059 Drill Collars Run 216 Vis 45
 Bottom Packer Depth 5064 Wt. Pipe Run 0 WL 9.6
 Total Depth 5121 Chlorides 5000 ppm System LCM 4

Blow Description IF: Strong Blow, BOB in 20 seconds
ISI Blow Back Built to BOB in 4 minutes, GTS 12 minutes into shut in
FFI Strong Blow, BOB in 20 seconds, GTS immediate, banded w/meria, TSTM by 40 minutes, caught 5.1 ml
FSI: would not bleed off, OTS in 28 minutes

Rec	Feet of	%gas	%oil	%water	%mud
<u>4939</u>	<u>GSY oil</u>	<u>10</u>	<u>90</u>		
<u>120</u>	<u>60wcm</u>	<u>5</u>	<u>30</u>	<u>5</u>	<u>60</u>

Rec Total 5059 BHT 121 Gravity 34.2 API RW NIC @ NIC °F Chlorides NIC ppm

(A) Initial Hydrostatic <u>2669</u>	<input checked="" type="checkbox"/> Test <u>1350</u>	T-On Location <u>1830</u>
(B) First Initial Flow <u>596</u>	<input checked="" type="checkbox"/> Jars <u>250</u>	T-Started <u>19:03</u>
(C) First Final Flow <u>439</u>	<input checked="" type="checkbox"/> Safety Joint <u>75</u>	T-Open <u>21:26</u>
(D) Initial Shut-In <u>1168</u>	<input type="checkbox"/> Circ Sub	T-Pulled <u>02:30</u>
(E) Second Initial Flow <u>541</u>	<input checked="" type="checkbox"/> Hourly Standby <u>2 2.5h 250</u>	T-Out <u>07:32</u>
(F) Second Final Flow <u>1073</u>	<input checked="" type="checkbox"/> Mileage <u>1107</u> <u>170.50</u>	Comments
(G) Final Shut-In <u>1164</u>	<input type="checkbox"/> Sampler	
(H) Final Hydrostatic <u>2621</u>	<input type="checkbox"/> Straddle	<input type="checkbox"/> Ruined Shale Packer
	<input type="checkbox"/> Shale Packer	<input type="checkbox"/> Ruined Packer
	<input type="checkbox"/> Extra Packer	<input type="checkbox"/> Extra Copies

Initial Open 5
 Initial Shut-In 60
 Final Flow 90
 Final Shut-In 120

Sub Total 2095.50

Approved By [Signature] Our Representative [Signature]

Trilobite Testing Inc. shall not be liable for damaged of any kind of the property or personnel of the one for whom a test is made, or for any loss suffered or sustained, directly or indirectly, through the use of its equipment, or its statements or opinion concerning the results of any test, tools lost or damaged in the hole shall be paid for at cost by the party for whom the test is made.

