



DRILL STEM TEST REPORT

Prepared For: **American Warrior Inc.**

PO Box 399
Garden City, KS 67646

ATTN: Jason Alm

BCB Unit #1

20-17s-21w Ness,KS

Start Date: 2014.05.11 @ 22:43:48

End Date: 2014.05.12 @ 06:34:48

Job Ticket #: 58933 DST #: 1

Trilobite Testing, Inc
PO Box 362 Hays, KS 67601
ph: 785-625-4778 fax: 785-625-5620

Printed: 2014.05.14 @ 17:19:23



**TRILOBITE
TESTING, INC**

DRILL STEM TEST REPORT

American Warrior Inc.
PO Box 399
Garden City, KS 67646
ATTN: Jason Alm

20-17s-21w Ness,KS

BCB Unit #1

Job Ticket: 58933

DST#: 1

Test Start: 2014.05.11 @ 22:43:48

GENERAL INFORMATION:

Formation: **Miss**
 Deviated: No Whipstock: ft (KB)
 Time Tool Opened: 01:13:08
 Time Test Ended: 06:34:48
 Interval: **4303.00 ft (KB) To 4310.00 ft (KB) (TVD)**
 Total Depth: 4310.00 ft (KB) (TVD)
 Hole Diameter: 7.88 inches Hole Condition: Good
 Test Type: Conventional Bottom Hole (Initial)
 Tester: Tate Lang
 Unit No: 49
 Reference Elevations: 2233.00 ft (KB)
 2227.00 ft (CF)
 KB to GR/CF: 6.00 ft

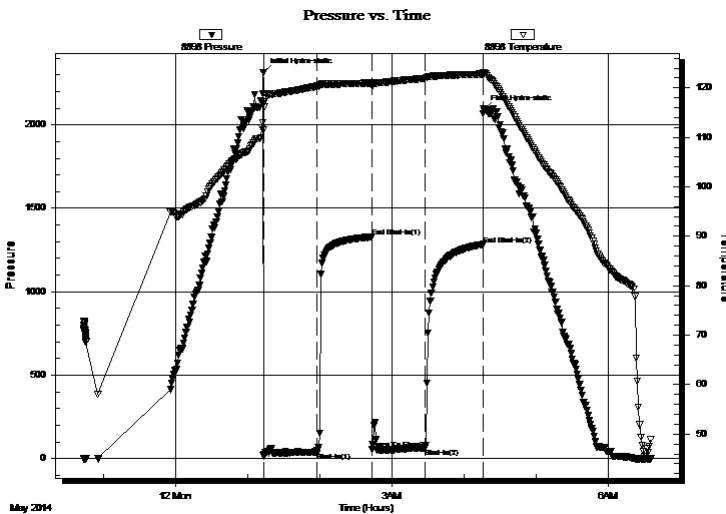
Serial #: 8898

Outside

Press@RunDepth: 62.70 psig @ 4307.00 ft (KB)
 Start Date: 2014.05.11 End Date: 2014.05.12
 Start Time: 22:43:49 End Time: 06:34:48
 Capacity: 8000.00 psig
 Last Calib.: 2014.05.12
 Time On Btm: 2014.05.12 @ 01:12:58
 Time Off Btm: 2014.05.12 @ 04:16:08

TEST COMMENT: Weak surface blow built to 2 1/2 in
 Dead no blow back
 Fair blow built to 4 1/4 in
 Dead no blow back

PRESSURE SUMMARY



Time (Min.)	Pressure (psig)	Temp (deg F)	Annotation
0	2314.64	113.08	Initial Hydro-static
1	17.28	111.50	Open To Flow (1)
45	40.24	120.32	Shut-In(1)
91	1328.01	121.03	End Shut-In(1)
91	55.61	120.40	Open To Flow (2)
135	62.70	121.97	Shut-In(2)
183	1283.75	122.81	End Shut-In(2)
184	2093.95	122.99	Final Hydro-static

Recovery

Length (ft)	Description	Volume (bbl)
120.00	WMO 80%O 10%W 10%M	0.59
10.00	WCMO 45%O 10%W 45%M	0.14

Gas Rates

	Choke (inches)	Pressure (psig)	Gas Rate (Mcf/d)



**TRILOBITE
TESTING, INC**

DRILL STEM TEST REPORT

TOOL DIAGRAM

American Warrior Inc.

20-17s-21w Ness, KS

PO Box 399
Garden City, KS 67646

BCB Unit #1

Job Ticket: 58933

DST#: 1

ATTN: Jason Alm

Test Start: 2014.05.11 @ 22:43:48

Tool Information

Drill Pipe:	Length: 4161.00 ft	Diameter: 3.80 inches	Volume: 58.37 bbl	Tool Weight: 2200.00 lb
Heavy Wt. Pipe:	Length: 0.00 ft	Diameter: 0.00 inches	Volume: 0.00 bbl	Weight set on Packer: 25000.00 lb
Drill Collar:	Length: 120.00 ft	Diameter: 2.25 inches	Volume: 0.59 bbl	Weight to Pull Loose: 65000.00 lb
			<u>Total Volume: 58.96 bbl</u>	Tool Chased 0.00 ft
Drill Pipe Above KB:	5.00 ft			String Weight: Initial 60000.00 lb
Depth to Top Packer:	4303.00 ft			Final 60000.00 lb
Depth to Bottom Packer:	ft			
Interval between Packers:	7.00 ft			
Tool Length:	34.00 ft			
Number of Packers:	2	Diameter: 6.75 inches		

Tool Comments:

Tool Description	Length (ft)	Serial No.	Position	Depth (ft)	Accum. Lengths
------------------	-------------	------------	----------	------------	----------------

Shut In Tool	5.00			4281.00	
Hydraulic tool	5.00			4286.00	
Jars	5.00			4291.00	
Safety Joint	2.00			4293.00	
Packer	5.00			4298.00	27.00 Bottom Of Top Packer
Packer	5.00			4303.00	
Stubb	1.00			4304.00	
Perforations	3.00			4307.00	
Recorder	0.00	8897	Inside	4307.00	
Recorder	0.00	8898	Outside	4307.00	
Bullnose	3.00			4310.00	7.00 Bottom Packers & Anchor

Total Tool Length: 34.00



**TRILOBITE
TESTING, INC**

DRILL STEM TEST REPORT

FLUID SUMMARY

American Warrior Inc.

20-17s-21w Ness,KS

PO Box 399
Garden City, KS 67646

BCB Unit #1

Job Ticket: 58933

DST#: 1

ATTN: Jason Alm

Test Start: 2014.05.11 @ 22:43:48

Mud and Cushion Information

Mud Type: Gel Chem

Cushion Type:

Oil API:

deg API

Mud Weight: 10.00 lb/gal

Cushion Length:

ft

Water Salinity:

ppm

Viscosity: 54.00 sec/qt

Cushion Volume:

bbbl

Water Loss: 7.97 in³

Gas Cushion Type:

Resistivity: ohm.m

Gas Cushion Pressure:

psig

Salinity: 3000.00 ppm

Filter Cake: 1.00 inches

Recovery Information

Recovery Table

Length ft	Description	Volume bbbl
120.00	WMCO 80%O 10%W 10%M	0.590
10.00	WCMO 45%O 10%W 45%M	0.140

Total Length: 130.00 ft

Total Volume: 0.730 bbl

Num Fluid Samples: 0

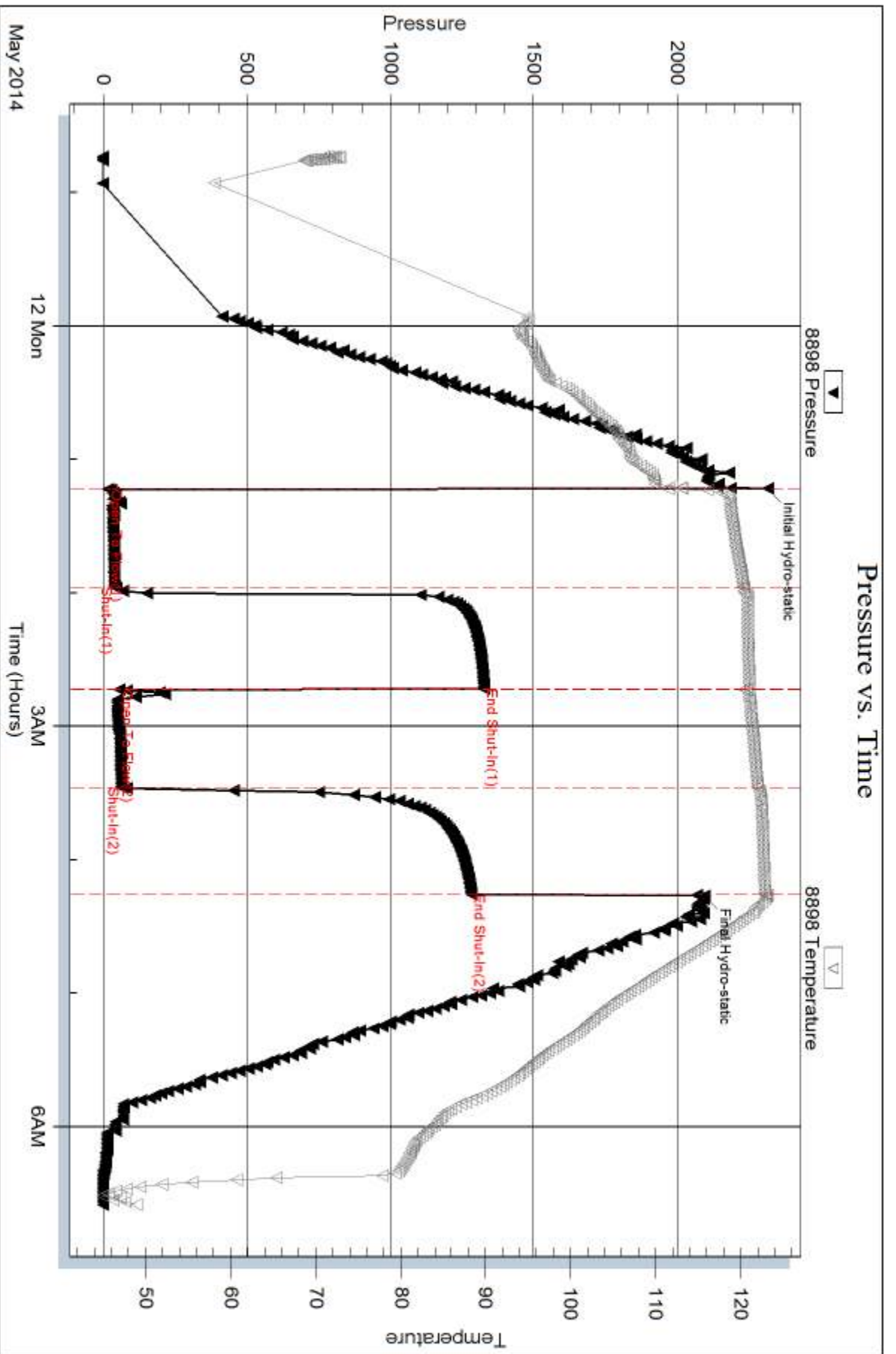
Num Gas Bombs: 0

Serial #:

Laboratory Name:

Laboratory Location:

Recovery Comments:



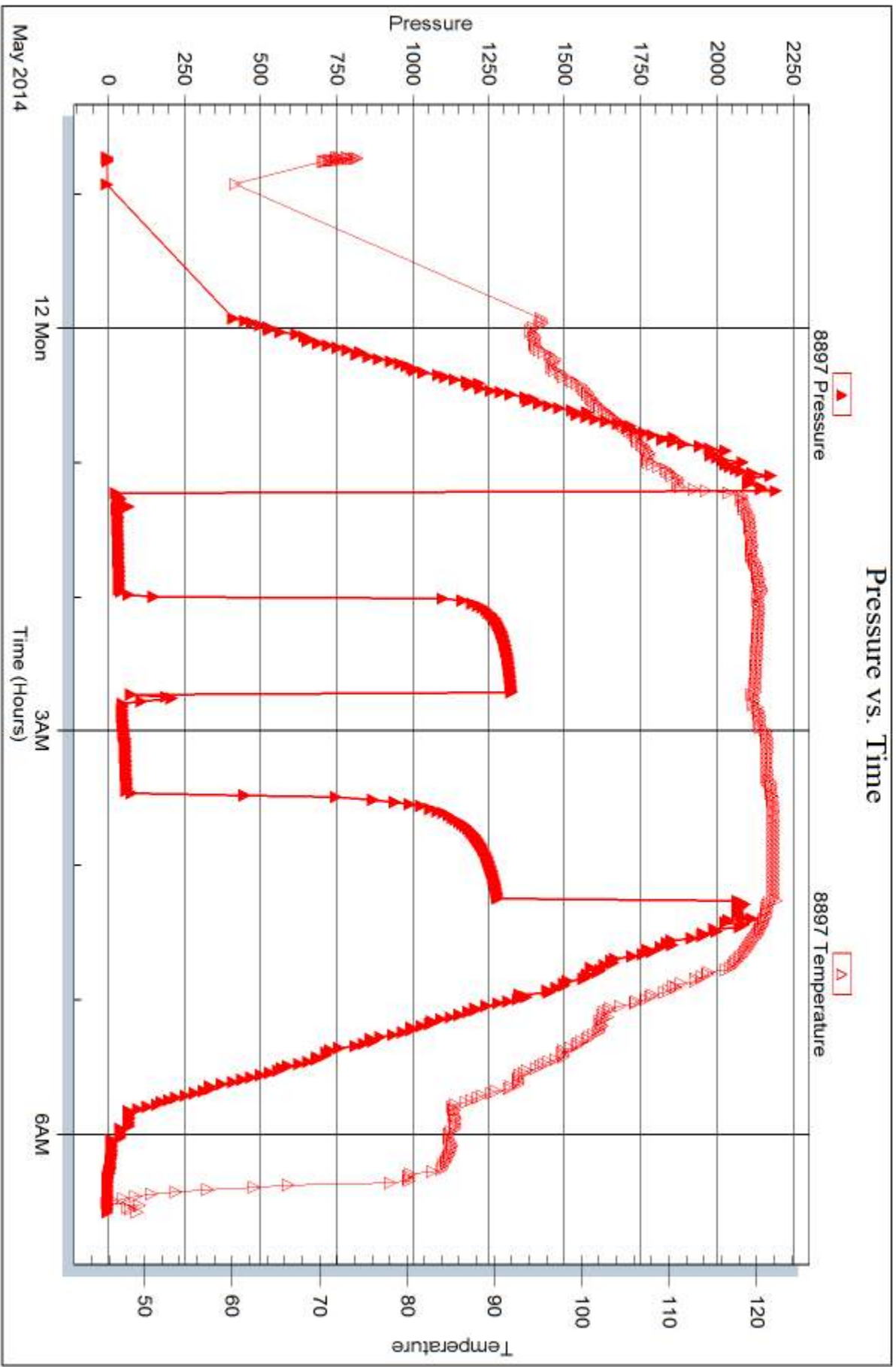
Serial #: 8897

Inside

American Warrior Inc.

BCB Unit #1

DST Test Number: 1





DRILL STEM TEST REPORT

Prepared For: **American Warrior Inc.**

PO Box 399
Garden City, KS 67646

ATTN: Jason Alm

BCB Unit #1

20-17s-21w Ness,KS

Start Date: 2014.05.12 @ 13:06:49

End Date: 2014.05.12 @ 20:24:28

Job Ticket #: 58934 DST #: 2

Trilobite Testing, Inc
PO Box 362 Hays, KS 67601
ph: 785-625-4778 fax: 785-625-5620

Printed: 2014.05.14 @ 17:18:47



**TRILOBITE
TESTING, INC**

DRILL STEM TEST REPORT

American Warrior Inc.

20-17s-21w Ness,KS

PO Box 399
Garden City, KS 67646

BCB Unit #1

Job Ticket: 58934

DST#: 2

ATTN: Jason Alm

Test Start: 2014.05.12 @ 13:06:49

GENERAL INFORMATION:

Formation: **Miss**

Deviated: No Whipstock: ft (KB)

Time Tool Opened: 15:25:59

Time Test Ended: 20:24:28

Test Type: Conventional Bottom Hole (Reset)

Tester: Tate Lang

Unit No: 49

Interval: 4310.00 ft (KB) To 4320.00 ft (KB) (TVD)

Reference Elevations: 2233.00 ft (KB)

Total Depth: 4320.00 ft (KB) (TVD)

2227.00 ft (CF)

Hole Diameter: 7.88 inches Hole Condition: Good

KB to GR/CF: 6.00 ft

Serial #: 8898 Outside

Press@RunDepth: 43.69 psig @ 4317.00 ft (KB)

Capacity: 8000.00 psig

Start Date: 2014.05.12

End Date:

2014.05.12

Last Calib.:

2014.05.12

Start Time: 13:06:50

End Time:

20:24:29

Time On Btm:

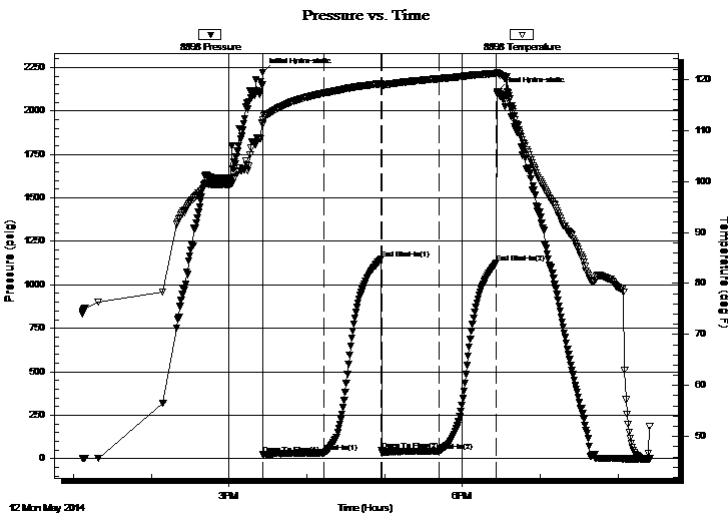
2014.05.12 @ 15:25:49

Time Off Btm:

2014.05.12 @ 18:26:49

TEST COMMENT: Weak surface blow built to 2 1/2 in
Dead no blow back
Weak surface blow built to 2 3/4 in
Dead no blow back

PRESSURE SUMMARY



Time (Min.)	Pressure (psig)	Temp (deg F)	Annotation
0	2221.79	112.09	Initial Hydro-static
1	24.13	111.21	Open To Flow (1)
48	34.46	117.27	Shut-In(1)
92	1148.17	119.13	End Shut-In(1)
92	45.94	118.71	Open To Flow (2)
136	43.69	120.10	Shut-In(2)
181	1125.09	121.13	End Shut-In(2)
181	2111.46	121.35	Final Hydro-static

Recovery

Length (ft)	Description	Volume (bbl)
15.00	100%Oil	0.07
45.00	OCM 20%O 80%M	0.22

Gas Rates

	Choke (inches)	Pressure (psig)	Gas Rate (Mcf/d)

* Recovery from multiple tests



**TRILOBITE
TESTING, INC**

DRILL STEM TEST REPORT

TOOL DIAGRAM

American Warrior Inc.

20-17s-21w Ness, KS

PO Box 399
Garden City, KS 67646

BCB Unit #1

Job Ticket: 58934

DST#: 2

ATTN: Jason Alm

Test Start: 2014.05.12 @ 13:06:49

Tool Information

Drill Pipe:	Length: 4191.00 ft	Diameter: 3.80 inches	Volume: 58.79 bbl	Tool Weight: 2200.00 lb
Heavy Wt. Pipe:	Length: 0.00 ft	Diameter: 0.00 inches	Volume: 0.00 bbl	Weight set on Packer: 25000.00 lb
Drill Collar:	Length: 120.00 ft	Diameter: 2.25 inches	Volume: 0.59 bbl	Weight to Pull Loose: 65000.00 lb
			<u>Total Volume: 59.38 bbl</u>	Tool Chased 0.00 ft
Drill Pipe Above KB:	28.00 ft			String Weight: Initial 61000.00 lb
Depth to Top Packer:	4310.00 ft			Final 61000.00 lb
Depth to Bottom Packer:	ft			
Interval between Packers:	10.00 ft			
Tool Length:	37.00 ft			
Number of Packers:	2	Diameter: 6.75 inches		

Tool Comments:

Tool Description	Length (ft)	Serial No.	Position	Depth (ft)	Accum. Lengths
------------------	-------------	------------	----------	------------	----------------

Shut In Tool	5.00			4288.00	
Hydraulic tool	5.00			4293.00	
Jars	5.00			4298.00	
Safety Joint	2.00			4300.00	
Packer	5.00			4305.00	27.00 Bottom Of Top Packer
Packer	5.00			4310.00	
Stubb	1.00			4311.00	
Perforations	6.00			4317.00	
Recorder	0.00	8897	Inside	4317.00	
Recorder	0.00	8898	Outside	4317.00	
Bullnose	3.00			4320.00	10.00 Bottom Packers & Anchor

Total Tool Length: 37.00



**TRILOBITE
TESTING, INC**

DRILL STEM TEST REPORT

FLUID SUMMARY

American Warrior Inc.

20-17s-21w Ness,KS

PO Box 399
Garden City, KS 67646

BCB Unit #1

Job Ticket: 58934

DST#: 2

ATTN: Jason Alm

Test Start: 2014.05.12 @ 13:06:49

Mud and Cushion Information

Mud Type: Gel Chem

Cushion Type:

Oil API:

deg API

Mud Weight: 9.00 lb/gal

Cushion Length: ft

Water Salinity: ppm

Viscosity: sec/qt

Cushion Volume: bbl

Water Loss: 8.78 in³

Gas Cushion Type:

Resistivity: ohm.m

Gas Cushion Pressure: psig

Salinity: 3000.00 ppm

Filter Cake: 1.00 inches

Recovery Information

Recovery Table

Length ft	Description	Volume bbl
15.00	100%Oil	0.074
45.00	OCM 20%O 80%M	0.221

Total Length: 60.00 ft Total Volume: 0.295 bbl

Num Fluid Samples: 0

Num Gas Bombs: 0

Serial #:

Laboratory Name:

Laboratory Location:

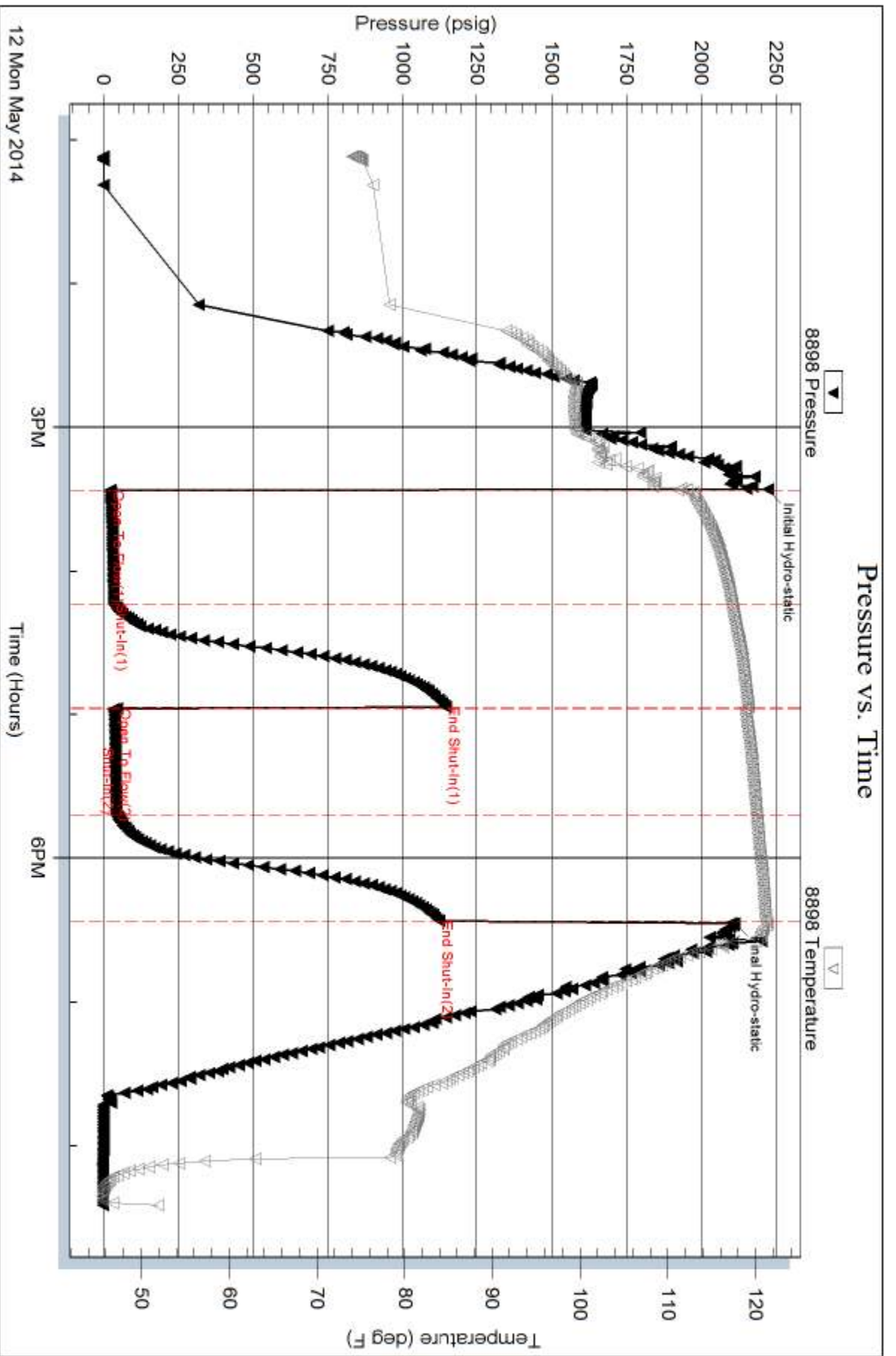
Recovery Comments:

Serial #: 8898

Outside American Warrior Inc.

BCB Unit #1

DST Test Number: 2



Tribble Testing, Inc

Ref. No: 58934

Printed: 2014.05.14 @ 17:18:48

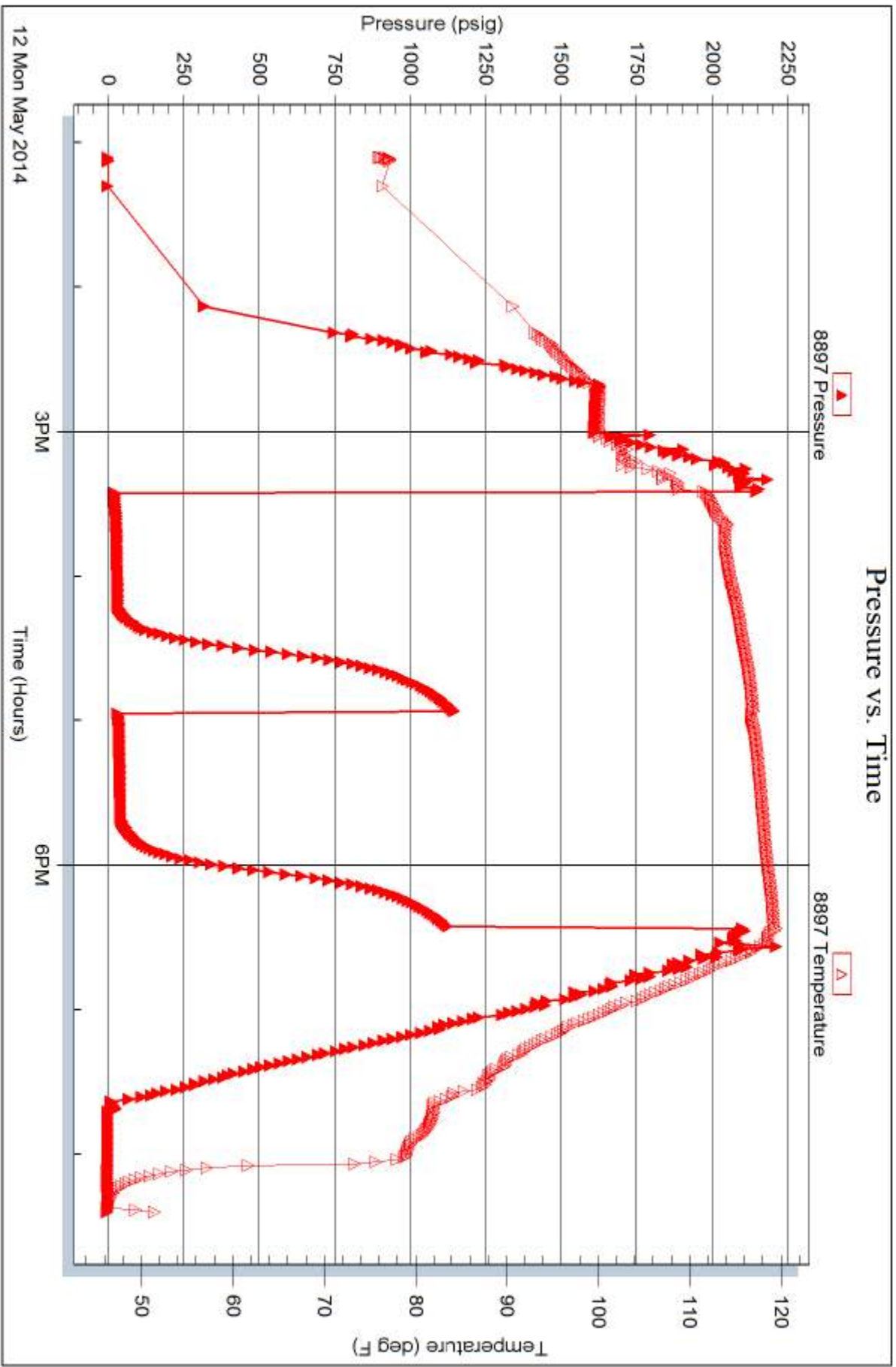
Serial #: 8897

Inside

American Warrior Inc.

BCB Unit #1

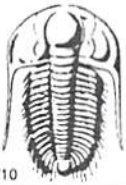
DST Test Number: 2



Tribble Testing, Inc

Ref. No: 58934

Printed: 2014.05.14 @ 17:18:48



TRILOBITE TESTING INC.

1515 Commerce Parkway • Hays, Kansas 67601

Test Ticket

NO. 58933

4/10

Well Name & No. BCB Unit #1 Test No. 1 Date 5-11-14
 Company American Warrior Inc Elevation 2233 KB 2227 GL
 Address 3118 Cummings Rd PO Box 399 Garden City MS 39746
 Co. Rep / Geo. Susan Alm Rig Petromark Rig #1
 Location: Sec. 20 Twp. 17S Rge. 21W Co. Ness State MS

Interval Tested 4303 4310 Zone Tested Miss
 Anchor Length 7' Drill Pipe Run 4161 Mud Wt. 9.5
 Top Packer Depth 4298 Drill Collars Run 120 Vis 54
 Bottom Packer Depth 4303 Wt. Pipe Run 0 WL 8.0
 Total Depth 4310 Chlorides 3000 ppm System LCM TR

Blow Description Wealth surface blow built to 2 1/2 in
Dead no blow back
Fair blow built to 4 1/4 in
Dead no blow back

Rec	Feet of	%gas	%oil	%water	%mud
Rec <u>120</u>	Feet of <u>WCMO</u>	%gas	<u>80</u> %oil	<u>10</u> %water	<u>10</u> %mud
Rec <u>10</u>	Feet of <u>WCMO</u>	%gas	<u>45</u> %oil	<u>10</u> %water	<u>45</u> %mud
Rec _____	Feet of _____	%gas	%oil	%water	%mud
Rec _____	Feet of _____	%gas	%oil	%water	%mud

Rec Total 130 BHT _____ Gravity _____ API RW _____ @ _____ °F Chlorides _____ ppm

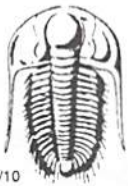
(A) Initial Hydrostatic 2315 Test 1250 T-On Location 22:00
 (B) First Initial Flow 17 Jars 250 T-Started 22:43
 (C) First Final Flow 40 Safety Joint 75 T-Open 01:12
 (D) Initial Shut-In 1328 Circ Sub _____ T-Pulled 04:12
 (E) Second Initial Flow 56 Hourly Standby _____ T-Out 06:43
 (F) Second Final Flow 63 Mileage 99 R/H 153.45 Comments _____
 (G) Final Shut-In 1284 Sampler _____
 (H) Final Hydrostatic 2094 Straddle _____

Shale Packer _____ Ruined Shale Packer _____
 Extra Packer _____ Ruined Packer _____
 Extra Recorder _____ Extra Copies _____
 Sub Total 0
 Total 1728.45
 MP/DST Disc't _____
 Sub Total 1728.45

Initial Open 45
 Initial Shut-In 45
 Final Flow 45
 Final Shut-In 48

Approved By _____ Our Representative [Signature]

Trilobite Testing Inc. shall not be liable for damaged of any kind of the property or personnel of the one for whom a test is made, or for any loss suffered or sustained, directly or indirectly, through the use of its equipment, or its statements or opinion concerning the results of any test, tools lost or damaged in the hole shall be paid for at cost by the party for whom the test is made.



TRILOBITE TESTING INC.

1515 Commerce Parkway • Hays, Kansas 67601

Test Ticket

NO. 58934

Well Name & No. BCB Unit #1 Test No. 2 Date 5-12-14
 Company American Warrior Inc Elevation 2233 KB 2227 GL
 Address _____
 Co. Rep / Geo. Sason Alm Rig Petromark #1
 Location: Sec. 20 Twp. 17S Rge. 21W Co. Ness State KS

Interval Tested 4310 4320 Zone Tested Miss.
 Anchor Length _____ Drill Pipe Run 4191 Mud Wt. 9.4
 Top Packer Depth _____ Drill Collars Run 120 Vis 60+
 Bottom Packer Depth _____ Wt. Pipe Run 0 WL 8.8
 Total Depth _____ Chlorides 3000 ppm System LCM TR

Blow Description Weak surface blow built to 2 1/2 in
Dead no blow back
Weak surface blow built to 2 3/4 in
Dead no blow back

Rec	Feet of	%gas	%oil	%water	%mud
Rec <u>15</u>	Feet of <u>Oil</u>	%gas	<u>100%</u> oil	%water	%mud
Rec <u>45</u>	Feet of <u>OCM</u>	%gas	<u>20%</u> oil	%water	<u>80%</u> mud
Rec _____	Feet of _____	%gas	%oil	%water	%mud
Rec _____	Feet of _____	%gas	%oil	%water	%mud

Rec Total 60 BHT 121 Gravity _____ API RW _____ @ _____ ° F Chlorides _____ ppm

(A) Initial Hydrostatic 2222 Test 1250 T-On Location 12:00
 (B) First Initial Flow 24 Jars 250 T-Started 13:06
 (C) First Final Flow 34 Safety Joint 75 T-Open 15:26
 (D) Initial Shut-In 1148 Circ Sub _____ T-Pulled 18:26
 (E) Second Initial Flow 44 Hourly Standby _____ T-Out 20:24
 (F) Second Final Flow 44 Mileage 153.45 Comments _____
 (G) Final Shut-In 1125 Sampler _____
 (H) Final Hydrostatic 2111 Straddle _____ Ruined Shale Packer _____
 Shale Packer _____ Ruined Packer _____
 Extra Packer _____ Extra Copies _____
 Initial Open 45 Extra Recorder _____ Sub Total 0
 Initial Shut-In 45 Day Standby _____ Total 1728.45
 Final Flow 45 Accessibility _____ MP/DST Disc't _____
 Final Shut-In 45 Sub Total 1728.45

Approved By _____ Our Representative [Signature]
 Trilobite Testing Inc. shall not be liable for damaged of any kind of the property or personnel of the one for whom a test is made, or for any loss suffered or sustained, directly or indirectly, through the use of its equipment, or its statements or opinion concerning the results of any test, tools lost or damaged in the hole shall be paid for at cost by the party for whom the test is made.