



NOTES

Company: American Warrior, Inc.

Lease: Handy 5-29

Field: Blue Bell

Location: SE-N-NW-SE (366' FNL& 2285' FEL)

Sec: 29 Twsp: 34S Rge: 31W

County: Seward State: Kansas

KB: 2730' GL: 2717'

API #: 15-175-22216-00-00

Contractor: Duke Drilling Inc. (Rig #9)

Spud: 05/13/2014 Comp: 05/26/2014

RTD: 6500' LTD: 6502'

Mud Up: 4200' Type Mud: Chemical

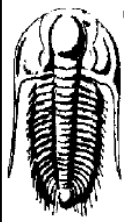
Samples Saved From: 4300' to RTD
 Drilling Time Kept From: 4300' to RTD
 Samples Examined From: 4300' to RTD
 Geological Supervision from: 4300' to RTD
 Geologist on Well: Wyatt Urban

Surface Casing: 8 5/8@1745'

Electronic Surveys: Logged by Pioneer Energy Services, DIL/BHCS, CNL/CDL, MEL

American Warrior , Inc. Well Comparison

| DRILLING WELL | | | | | COMPARISON WELL | | | | COMPARISON WELL | | | |
|------------------------------|--------|---------|------|---------|--------------------------------|---------|-------------------------|-----|----------------------------|---------|-------------------------|-----|
| American Warrior- Handy 5-29 | | | | | Charter Production-Sprinkle #1 | | | | American Warrior- Handy #1 | | | |
| SE-NW-NW-SE | | | | | C-NW-NW | | | | NE-SW-NE | | | |
| 29-34S-31W | | | | | 29-34S-31W | | | | 29-34S-31W | | | |
| 2730 KB | | | | | 2729 KB | | Structural Relationship | | 2724 KB | | Structural Relationship | |
| Formation | Sample | Sub-Sea | Log | Sub-Sea | Log | Sub-Sea | Sample | Log | Log | Sub-Sea | Sample | Log |
| Heebner | 4372 | -1642 | 4371 | -1641 | 4369 | -1640 | -2 | -1 | 4387 | -1663 | 21 | 22 |
| Toronto | 4388 | -1658 | 4389 | -1659 | 4388 | -1659 | 1 | 0 | 4412 | -1688 | 30 | 29 |
| Lansing | 4536 | -1806 | 4535 | -1805 | 4535 | -1806 | 0 | 1 | 4540 | -1816 | 10 | 11 |
| Marmaton | 5227 | -2497 | 5234 | -2504 | 5220 | -2491 | -6 | -13 | 5231 | -2507 | 10 | 3 |
| Morrow | 5776 | -3046 | 5774 | -3044 | 5758 | -3029 | -17 | -15 | 5774 | -3050 | 4 | 6 |
| Morrow Sd. | 5807 | -3077 | 5805 | -3075 | 5804 | -3075 | -2 | 0 | 5822 | -3098 | 21 | 23 |
| Chester | 5918 | -3188 | 5924 | -3194 | 5909 | -3180 | -8 | -14 | 5914 | -3190 | 2 | -4 |
| Ste. Gen | 6215 | -3485 | 6229 | -3499 | 6211 | -3482 | -3 | -17 | 6218 | -3494 | 9 | -5 |
| St. Louis | 6314 | -3584 | 6325 | -3595 | 6310 | -3581 | -3 | -14 | 6306 | -3582 | -2 | -13 |
| RTD | 6500 | -3770 | 6500 | -3770 | 6470 | -3741 | -29 | -29 | 6458 | -3734 | -36 | -36 |
| LTD | 6502 | -3772 | 6502 | -3772 | | | | | 6449 | -3725 | -47 | -47 |



TRILOBITE TESTING, INC

DRILL STEM TEST REPORT

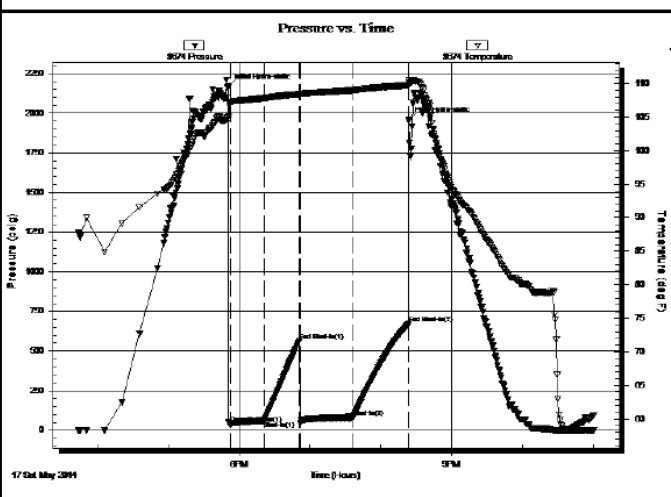
American Warrior Inc. **29-34s-34w Seward Co. KS**
 P.o Box 399 **Handy #5-29**
 Garden City KS. 67846 Job Ticket: 57209 **DST#:1**
 ATTN: Wyatt Urban Test Start: 2014.05.17 @ 15:44:00

GENERAL INFORMATION:

Formation: **Toronto**
 Deviated: No Whipstock: ft (KB) Test Type: Conventional Bottom Hole (Initial)
 Time Tool Opened: 17:52:10 Tester: Will MacLean
 Time Test Ended: 23:00:24 Unit No: 72
 Interval: **4370.00 ft (KB) To 4425.00 ft (KB) (TVD)** Reference Elevations: 2735.00 ft (KB)
 Total Depth: 4425.00 ft (KB) (TVD) 2722.00 ft (CF)
 Hole Diameter: 7.88 inches Hole Condition: Good KB to GR/CF: 13.00 ft

Serial #: 8674 Inside
 Press@RunDepth: 82.11 psig @ 4372.00 ft (KB) Capacity: 8000.00 psig
 Start Date: 2014.05.17 End Date: 2014.05.17 Last Calib.: 2014.05.17
 Start Time: 15:44:00 End Time: 23:00:24 Time On Btm: 2014.05.17 @ 17:50:55
 Time Off Btm: 2014.05.17 @ 20:23:54

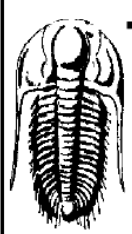
TEST COMMENT: IF- Slid 6' to Bottom Surface Blow Built to BOB in 4min
 IS- No Blow
 FF- Surface Blow Built to BOB in 2min
 FS- Very Weak Surface Blow in 18min



| PRESSURE SUMMARY | | | |
|------------------|-----------------|--------------|----------------------|
| Time (Min.) | Pressure (psig) | Temp (deg F) | Annotation |
| 0 | 2165.66 | 105.06 | Initial Hydro-static |
| 2 | 40.97 | 107.01 | Open To Flow (1) |
| 30 | 62.31 | 107.81 | Shut-in(1) |
| 61 | 562.56 | 108.42 | End Shut-in(1) |
| 61 | 49.10 | 108.25 | Open To Flow (2) |
| 106 | 82.11 | 109.01 | Shut-in(2) |
| 153 | 671.30 | 109.73 | End Shut-in(2) |
| 153 | 1956.89 | 110.55 | Final Hydro-static |

| Recovery | | |
|-------------|--------------------------------------|--------------|
| Length (ft) | Description | Volume (bbl) |
| 61.00 | GM 16%g 84%m with a couple Oil Spots | 0.30 |
| 61.00 | WGCM 3%w 24%g 73%m with a Skin | 0.30 |
| 10.00 | WGCM 2%w 3%g 95%m with a Skin | 0.05 |
| 0.00 | 744' of Weak GIP | 0.00 |

| Gas Rates | | | |
|-----------|----------------|-----------------|------------------|
| | Choke (inches) | Pressure (psig) | Gas Rate (Mcf/d) |
| | | | |



TRILOBITE TESTING, INC

DRILL STEM TEST REPORT

American Warrior Inc. **29-34s-34w Seward Co. KS**
 P.o Box 399 **Handy #5-29**
 Garden City KS. 67846 Job Ticket: 57211 **DST#: 3**
 ATTN: Wyatt Urban Test Start: 2014.05.20 @ 22:32:00

GENERAL INFORMATION:

Formation: **Marmanton**
 Deviated: No Whipstock: ft (KB) Test Type: Conventional Bottom Hole (Reset)
 Time Tool Opened: 00:34:25 Tester: Will MacLean

Time Tool Opened: 06:10:24

Tester: Will MacLean

Interval: 5223.00 ft (KB) To 5325.00 ft (KB) (TVD)

Reference Elevations: 2735.00 ft (KB)

Total Depth: 5325.00 ft (KB) (TVD)

2722.00 ft (CF)

Hole Diameter: 7.88 inches Hole Condition: Good

KB to GR/CF: 13.00 ft

Serial #: 8674 Inside

Press@RunDepth: 45.50 psig @ 5226.00 ft (KB)

Capacity: 8000.00 psig

Start Date: 2014.05.20 End Date: 2014.05.21

Last Calib.: 2014.05.21

Start Time: 22:32:00 End Time: 06:10:24

Time On Btm: 2014.05.21 @ 00:34:10

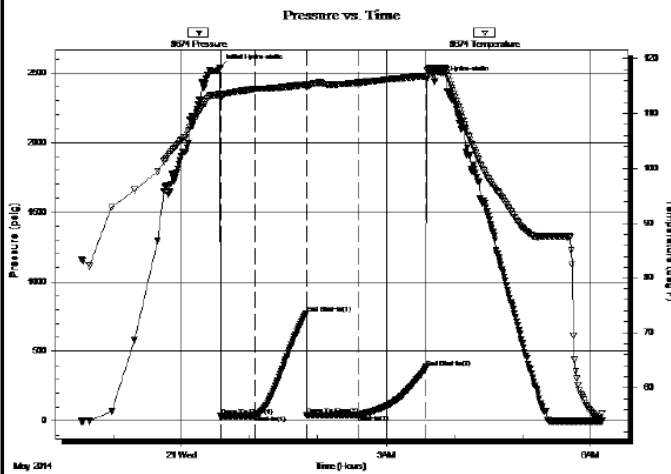
Time Off Btm: 2014.05.21 @ 03:35:39

TEST COMMENT: F- Weak Surface Blow Built to 1 1/4"

FSI- No Blow

FF- No Blow

FSI- No Blow



PRESSURE SUMMARY

| Time (Min.) | Pressure (psig) | Temp (deg F) | Annotation |
|-------------|-----------------|--------------|----------------------|
| 0 | 2538.38 | 113.68 | Initial Hydro-static |
| 1 | 32.40 | 112.72 | Open To Flow (1) |
| 31 | 39.16 | 114.48 | Shut-In(1) |
| 76 | 774.00 | 115.25 | End Shut-In(1) |
| 76 | 41.06 | 114.88 | Open To Flow (2) |
| 121 | 45.50 | 115.57 | Shut-In(2) |
| 182 | 387.03 | 116.84 | End Shut-In(2) |
| 182 | 2452.66 | 117.80 | Final Hydro-static |

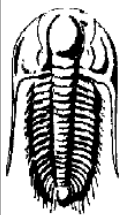
Recovery

| Length (ft) | Description | Volume (bbl) |
|-------------|--------------|--------------|
| 15.00 | WCM 3%w 97%m | 0.07 |
| | | |
| | | |
| | | |
| | | |

* Recovery from multiple tests

Gas Rates

| | Choke (inches) | Pressure (psig) | Gas Rate (Mcf/d) |
|--|----------------|-----------------|------------------|
| | | | |



TRILOBITE TESTING, INC

DRILL STEM TEST REPORT

American Warrior Inc.

29-34s-34w Seward Co. KS

P.o Box 399
Garden City KS. 67846

Handy #5-29

Job Ticket: 57212 DST#: 4

ATTN: Wyatt Urban

Test Start: 2014.05.23 @ 17:58:00

GENERAL INFORMATION:

Formation: Chester

Deviated: No Whipstock: ft (KB)

Test Type: Conventional Bottom Hole (Reset)

Time Tool Opened: 20:30:40

Tester: Will MacLean

Time Test Ended: 03:00:10

Unit No: 72

Interval: 5932.00 ft (KB) To 6010.00 ft (KB) (TVD)

Reference Elevations: 2735.00 ft (KB)

Total Depth: 6010.00 ft (KB) (TVD)

2722.00 ft (CF)

Hole Diameter: 7.88 inches Hole Condition: Good

KB to GR/CF: 13.00 ft

Serial #: 8674 Inside

Press@RunDepth: 204.04 psig @ 5935.00 ft (KB)

Capacity: 8000.00 psig

Start Date: 2014.05.23 End Date: 2014.05.24

Last Calib.: 2014.05.24

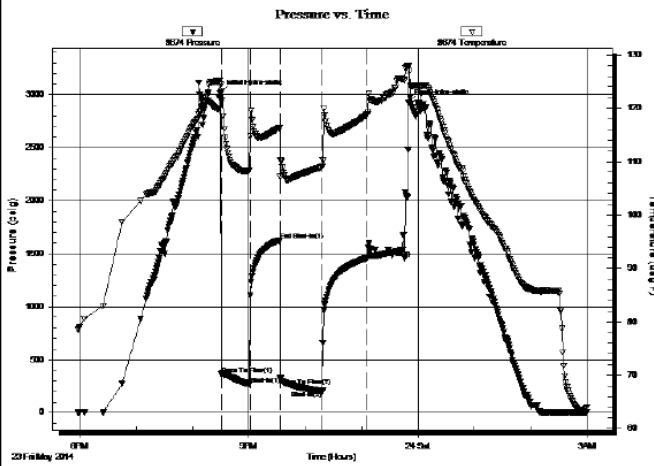
Start Time: 17:58:00 End Time: 03:00:10

Time On Btm: 2014.05.23 @ 20:29:55

Time Off Btm: 2014.05.23 @ 23:50:24

TEST COMMENT: F- Strong Surface Blow Built ROV in 20sec (Gas to Surface in 5min)

TEST COMMENT: FF- Strong Surface Blow Built BOB in 20sec (Gas to Surface in 5min)
 IS- BOB Bled off thru the Shut In Dead at End of Shut In
 FF- Strong Surface Blow BOB immediately
 FS- BOB Bled it off thru the Shut In Dead at End of Shut In



PRESSURE SUMMARY

| Time (Min.) | Pressure (psig) | Temp (deg F) | Annotation |
|-------------|-----------------|--------------|----------------------|
| 0 | 3015.13 | 124.33 | Initial Hydro-static |
| 1 | 362.19 | 123.28 | Open To Flow (1) |
| 32 | 268.80 | 108.41 | Shut-In(1) |
| 63 | 1625.49 | 116.36 | End Shut-In(1) |
| 64 | 322.58 | 107.25 | Open To Flow (2) |
| 109 | 204.04 | 109.07 | Shut-In(2) |
| 157 | 1458.44 | 118.83 | End Shut-In(2) |
| 201 | 2928.62 | 127.97 | Final Hydro-static |

Recovery

| Length (ft) | Description | Volume (bbl) |
|-------------|--------------------|--------------|
| 124.00 | GMCW 3%g 29%m 68%w | 0.61 |
| 5.00 | WCM 12%w 88%m | 0.02 |
| 0.00 | 5790' of Weak GP | 0.00 |
| | | |
| | | |
| | | |

* Recovery from multiple tests

Gas Rates

| | Choke (inches) | Pressure (psig) | Gas Rate (Mcf/d) |
|----------------|----------------|-----------------|------------------|
| First Gas Rate | 1.00 | 38.00 | 1506.44 |
| Last Gas Rate | 1.00 | 18.00 | 931.46 |
| Max. Gas Rate | 1.00 | 39.00 | 1535.19 |

ROCK TYPES

sdy lmst
 shale, gry
 shale, red
 Lmst fw<7
 Carbon Sh
 Ss

ACCESSORIES

FOSSIL

φ Oolite

OTHER SYMBOLS

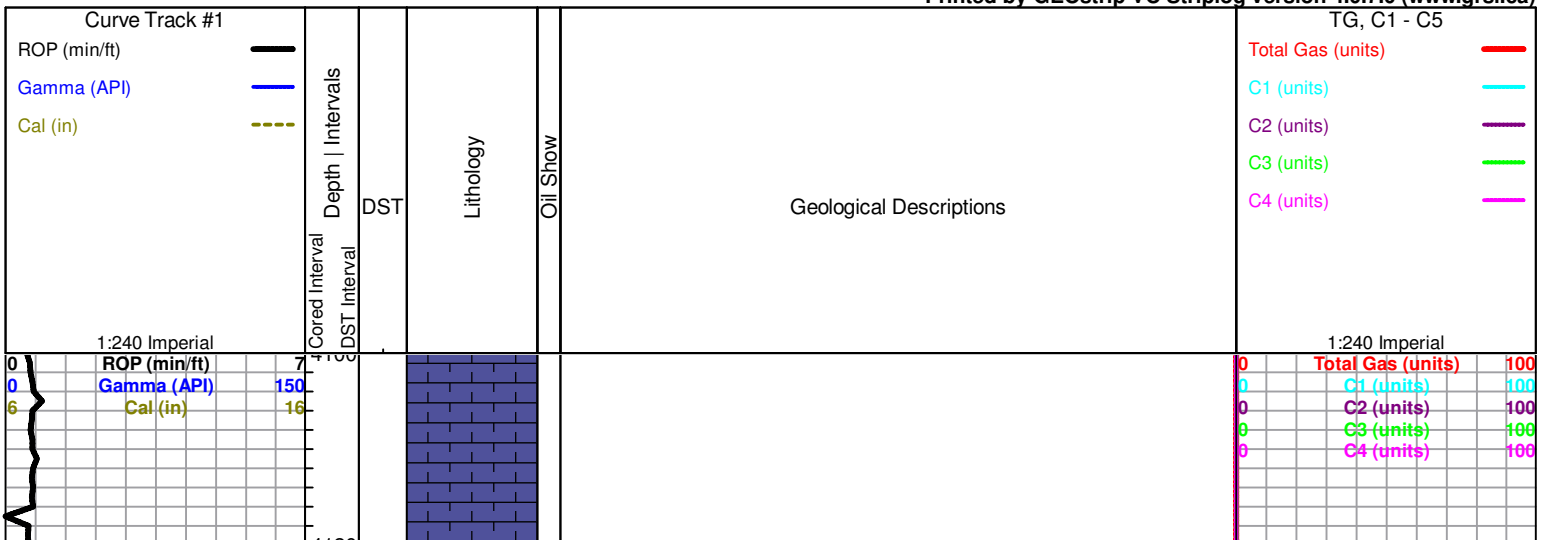
Oil Show

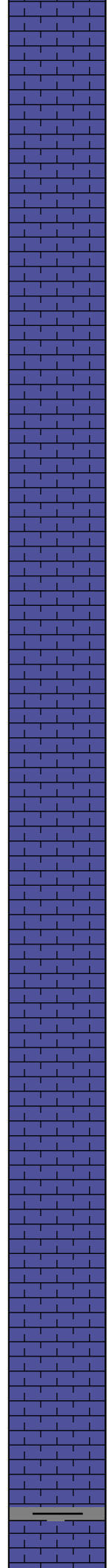
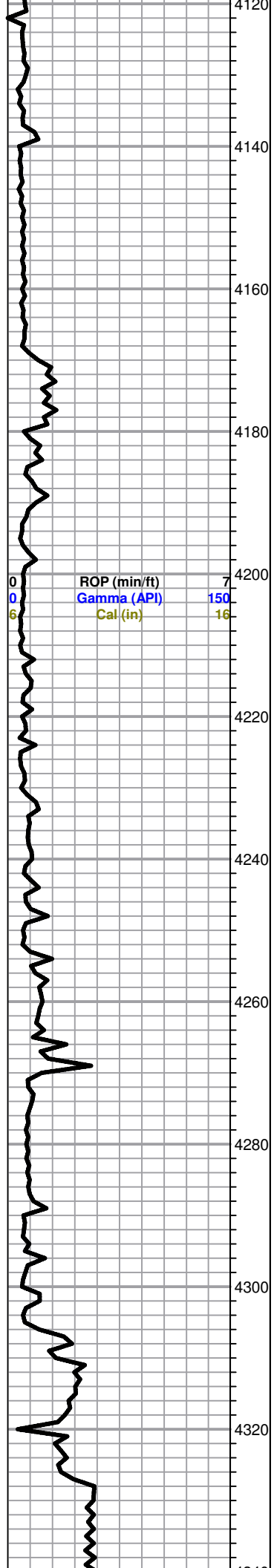
- Good Show
- Fair Show
- Poor Show
- Spotted or Trace
- Questionable Stn
- D Dead Oil Stn
- Fluorescence
- * Gas

DST

- DST Int
- DST alt
- Core
- || tail pipe

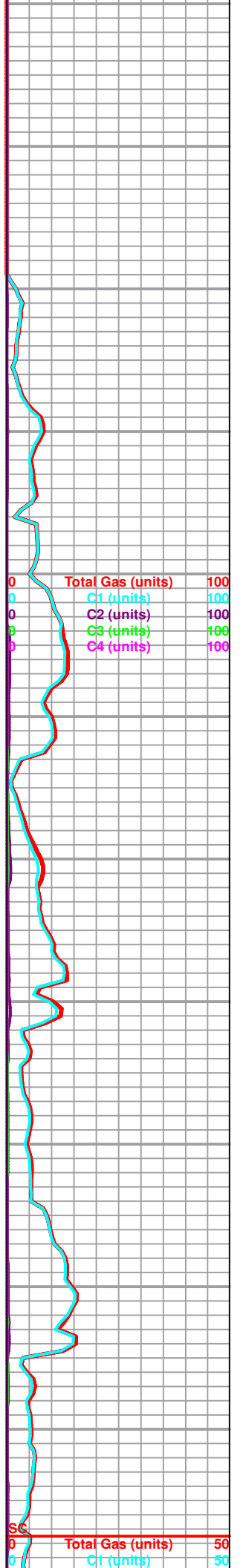
Printed by GEOstrip VC Striplog version 4.0.7.0 (www.grsi.ca)

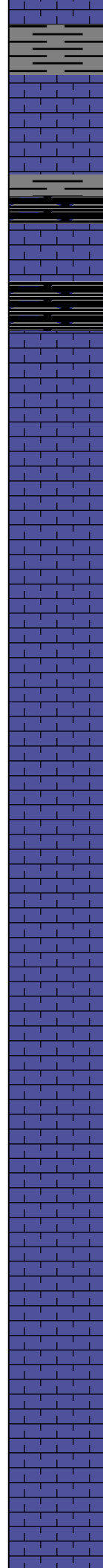
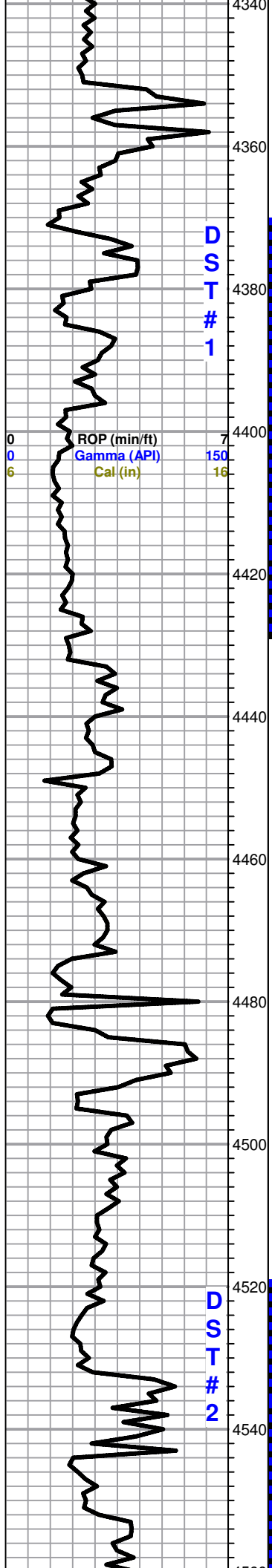




LS, cream to tan, chalky, foss, poor- fair scattered porosity, no shows

LS, cream to tan, FXL, chalky, few foss, poor scattered porosity





Sh. gray, black, silty, trace, LS, cream, FXL, few foss, sl chalky, poor visible porosity no shows

Black, gray, sh.

Heebner 4372 (-1642)

Black carb. Sh.

Toronto 4388 (-1658)

LS, cream to tan, FXL, foss, poor visible porosity, sl. chalky, no shows

LS, cream tan, FXL, chalky, few foss, trc. black stain, NSFO, no odor

LS, cream to tan, chalky, poor scattered porosity, Lt. flor. cut, Lt. back stain, NSFO, no odor

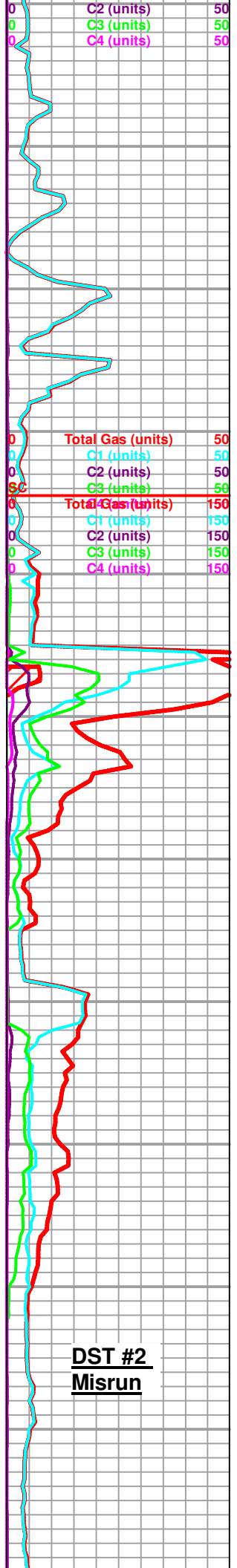
LS, cream, FXL, chalky, poor visible porosity no shows

LS, gray/ tan, FXL, dense, cherty in parts, no shows

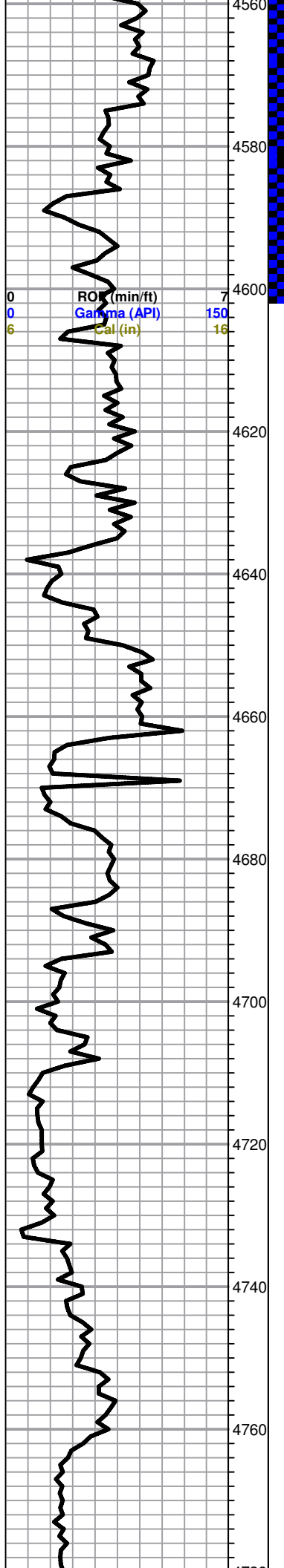
LS, tan, brown, FXL, dense, chalky in parts, poor visible porosity, no shows, trace gray F. grain sand, N/S

Lansing 4536 (-1806)

LS, cream, tan, V. chalky, foss, poor scattered porosity, Lt. Flor cut, Trc. Lt. brown stain, no odor



DST #2
Misrun



LS, tan, F-MXL, poor scattered porosity, few foss, Lt. flor. cut, trc. brown stain, no odor.

LS, cream to tan, FXL, chalky, Lt. brown stain, good flor. cut, fair odor, Lt. SFO.

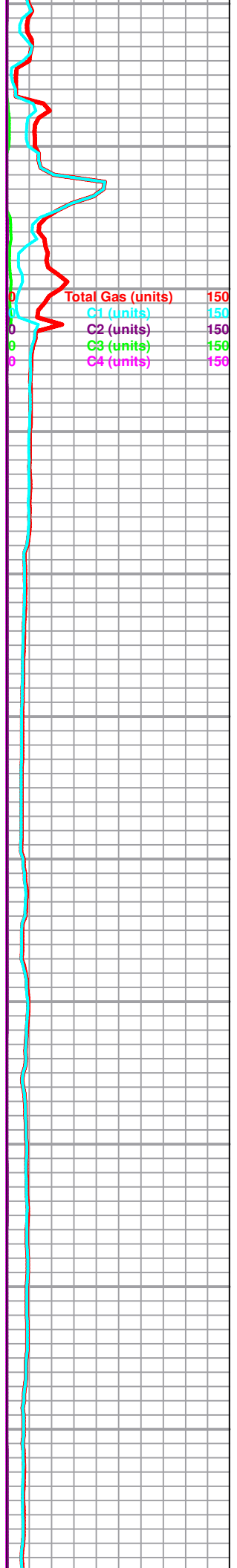
LS, tan to brown, FXL, foss, dns, poor visible porosity, no shows

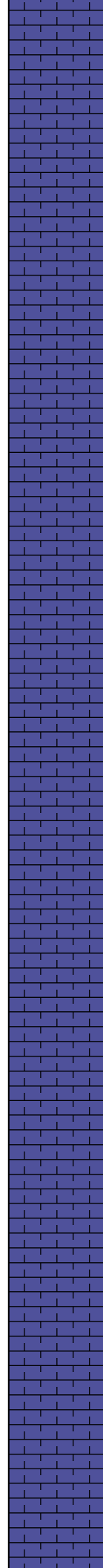
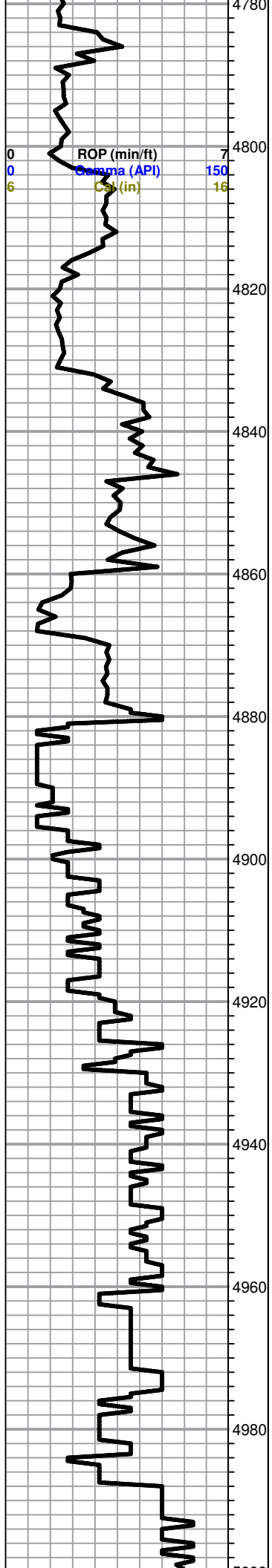
LS, cream, ool, chalky, poorly developed, poor scattered porosity, no shows

LS, tan to brown, FXL, dense, cherty, no shows

LS, cream, ool, poor scattered porosity, chalky, no shows

LS, tan to brown, ool, poorly developed, poor visible porosity, no shows





LS, tan, ool, sandy in parts, poor scattered porosity, no shows

LS, tan, FXL, ool, poor visible porosity, no shows

LS, tan to gray, FXL, dense, poor scattered porosity, no shows

LS, white to gray, FXL cherty, in parts, no visible porosity, no shows

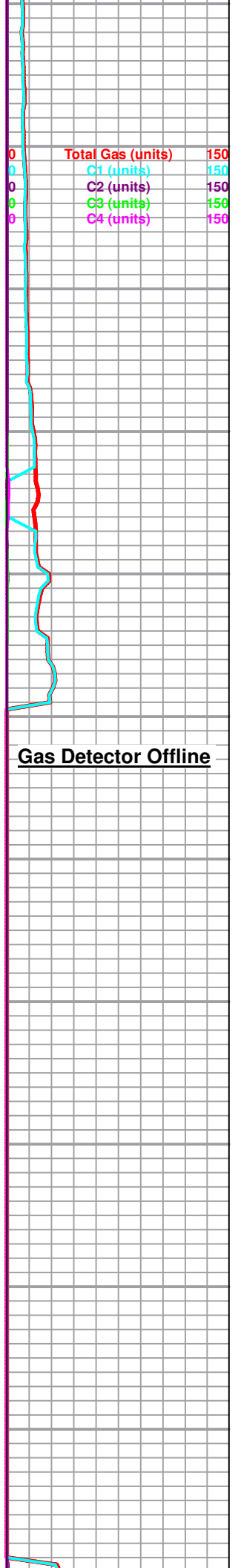
LS, brown, FXL, dense, poor scattered porosity, no shows, trace black carb Sh.

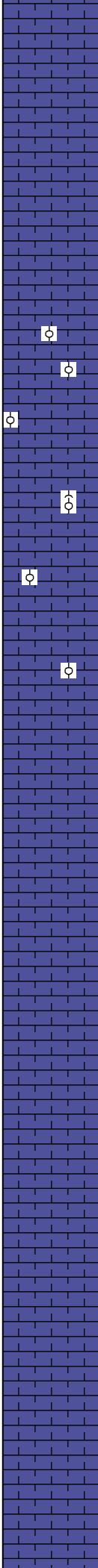
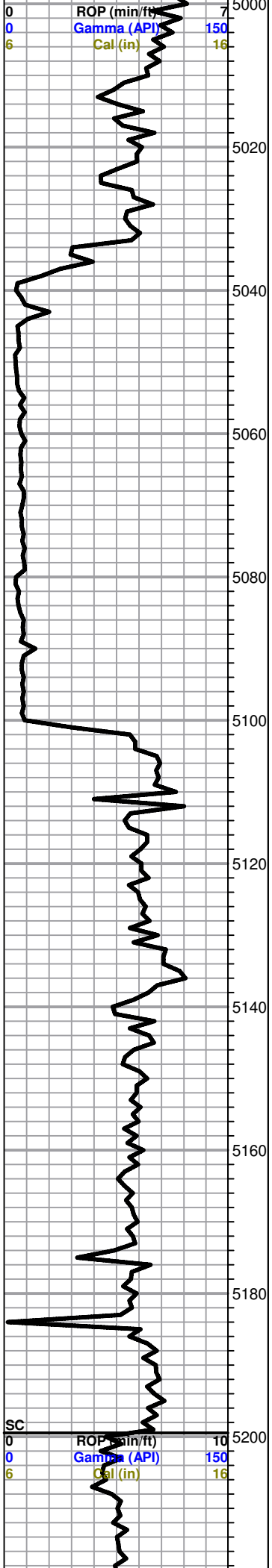
LS, tan, chalky, F-MXL, foss, poor visible porosity, no shows, trace black carb shale

Sh. gray, maroon,

LS, brown, FXL, dense, poor visible porosity, no shows

LS, tan, ool, poor scattered porosity, no shows





LS, tan to brown, FXL, few foss, poor visible porosity, cherty in parts, no shows

LS, cream to white, ool, v. chalky, good oom porosity, no shows

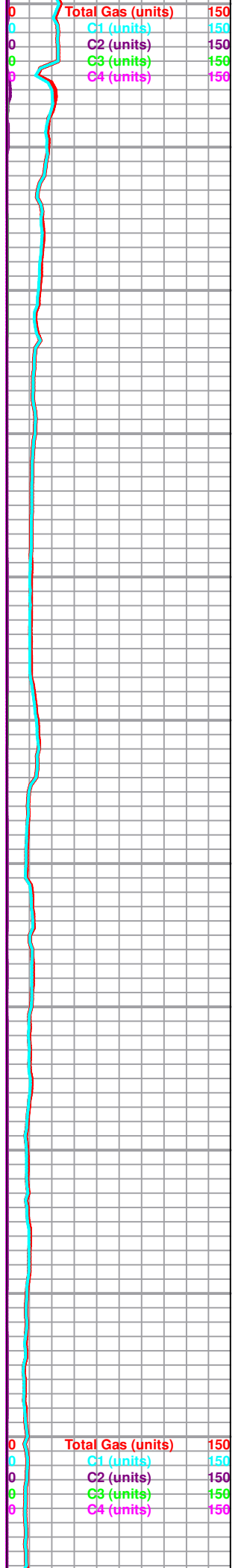
LS, cream to white, oo, chalky, good oom porosity, barren

LS, tan to brown, mottled, FXL, slightly chalky, poor scattered porosity, no shows

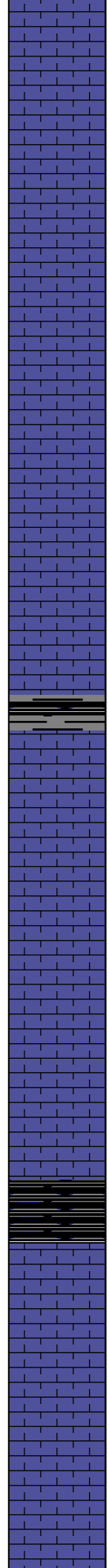
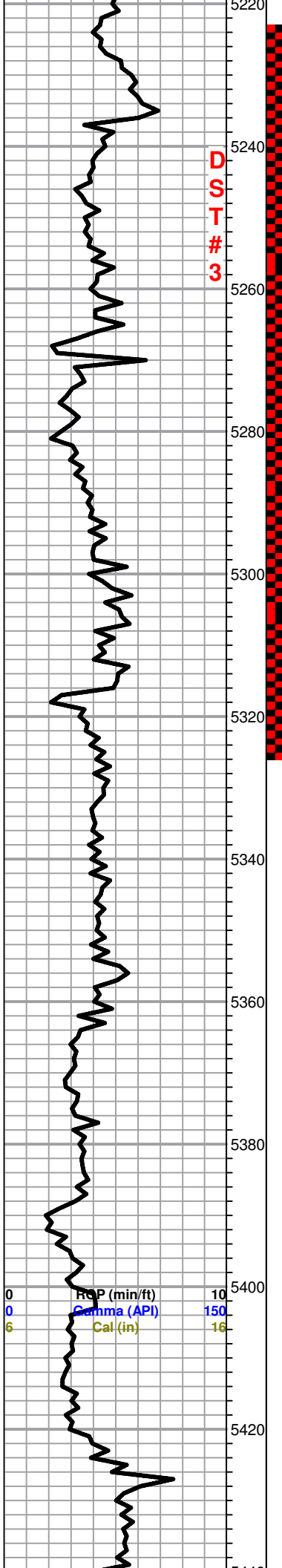
LS, tan to brown, FXL, dense, cherty, poor visible porosity, no shows

LS, brn, FXL, dense, cherty, no shows

LS, A/A



Marmaton 5227 (-2497)



LS, brown to tan, XL, dense, poor visible porosity, cherty no shows

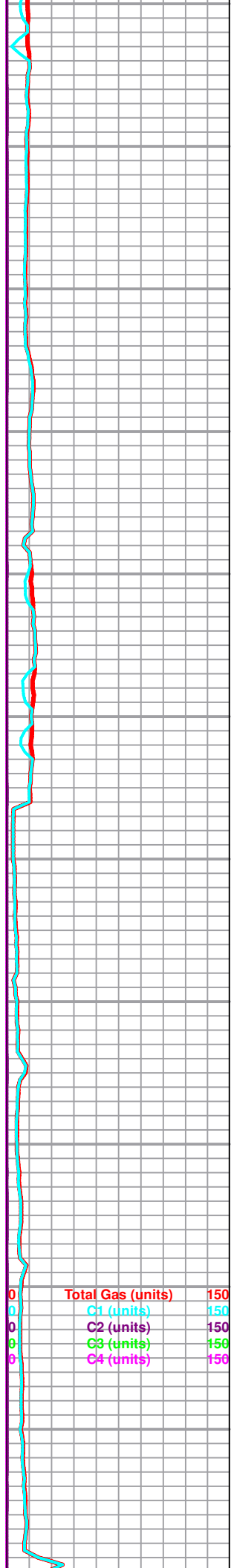
LS, cream to tan, few ool, poor scattered porosity, no shows

Slug gray/ black carb, sh.

LS, tan to ccream, FXL, chalky, poor scattered porosity, no shows

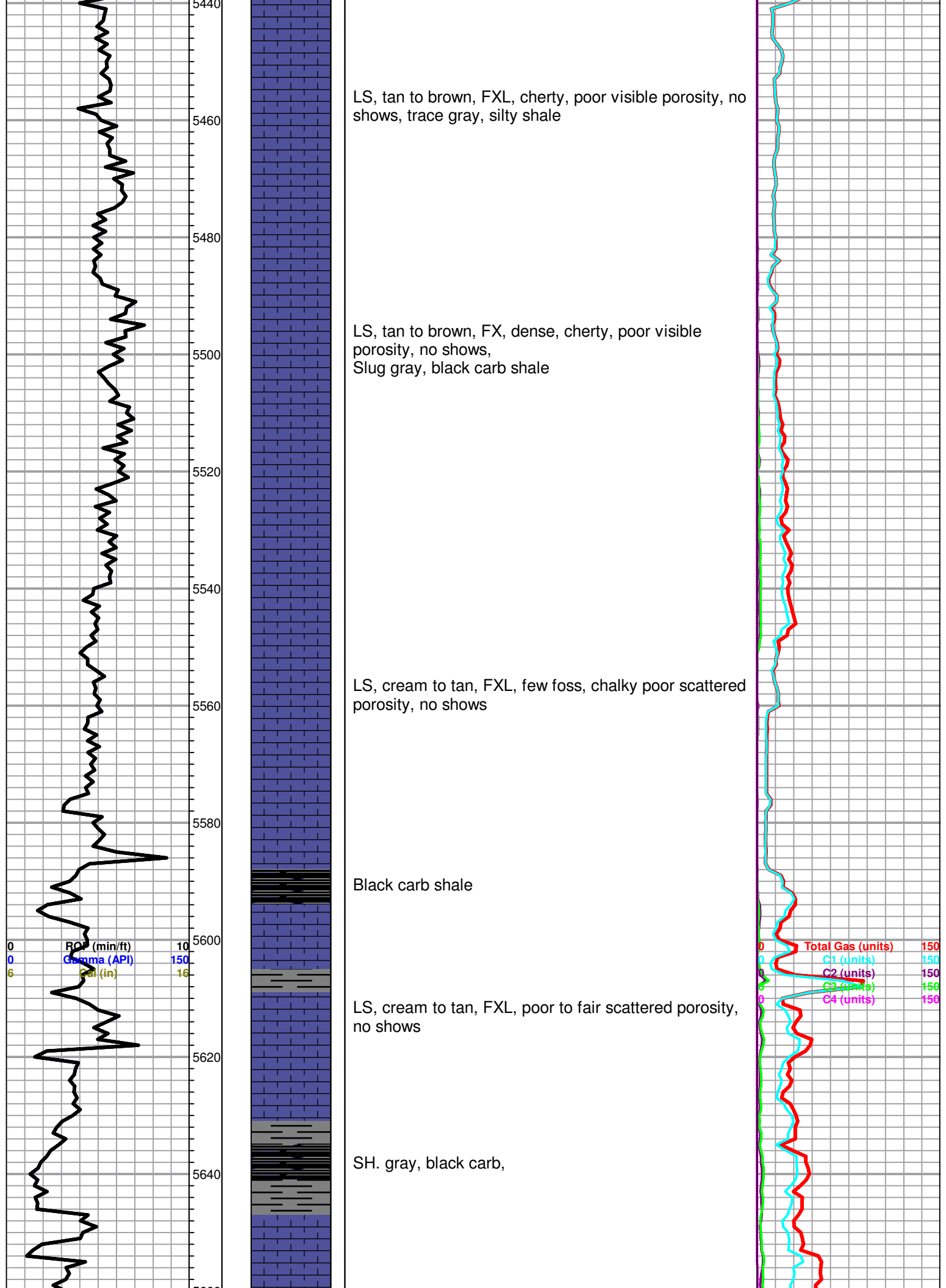
Black carb shale

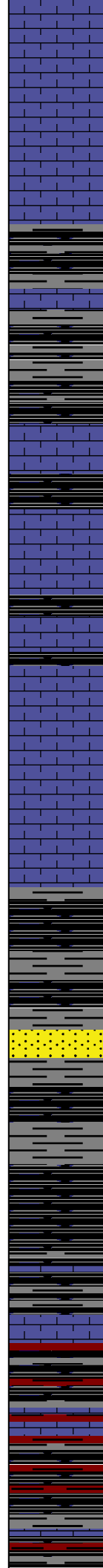
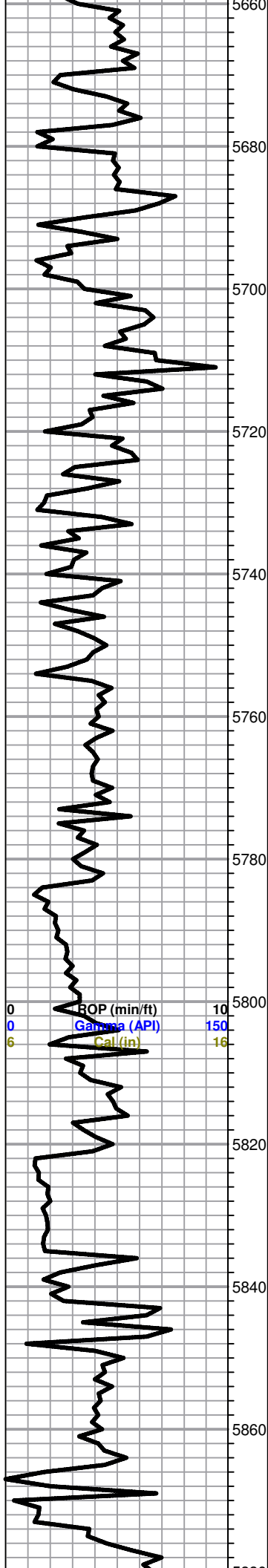
LS, tan to brown, mottled, FXL, chalky, poor scattered porosity, no shows



0 ROP (min/ft) 10
0 Gamma (API) 150
6 Cal (in) 16

0 Total Gas (units) 150
0 C1 (units) 150
0 C2 (units) 150
0 C3 (units) 150
0 C4 (units) 150





LS, tan , M-FXL, poor to fair scattered porosity, chalky, Lt. trc. spty flor cut, NSFO, no odor

Sh. black and gray, silty in parts, trc. LS>< cream to tan, FXL, slightly chalky, NSFO

LS, tan to brown, FXL, foss, poor visible porosity, no shows

Sh. black carb, trace, LS, tan, chalky, foss, poor visible porosity no shows

LS, cream, chalky, oo, poorly developed, poor scattered porosity, no shows

Morrow 5776 (-3048)

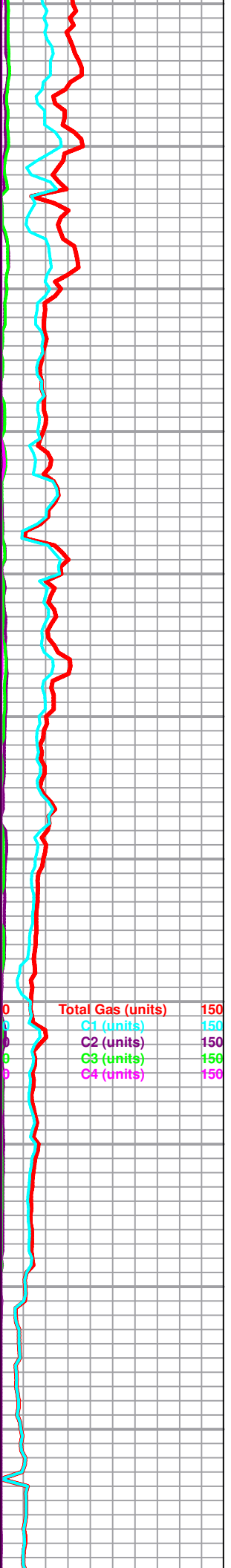
Black carb Sh.

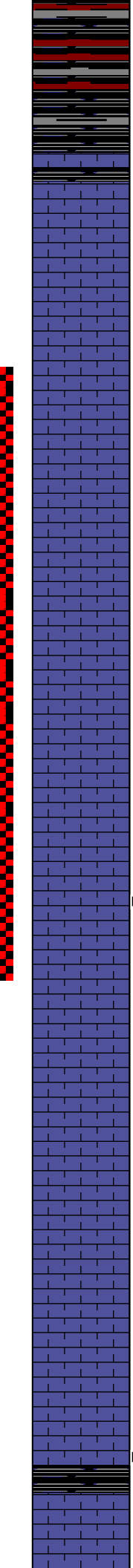
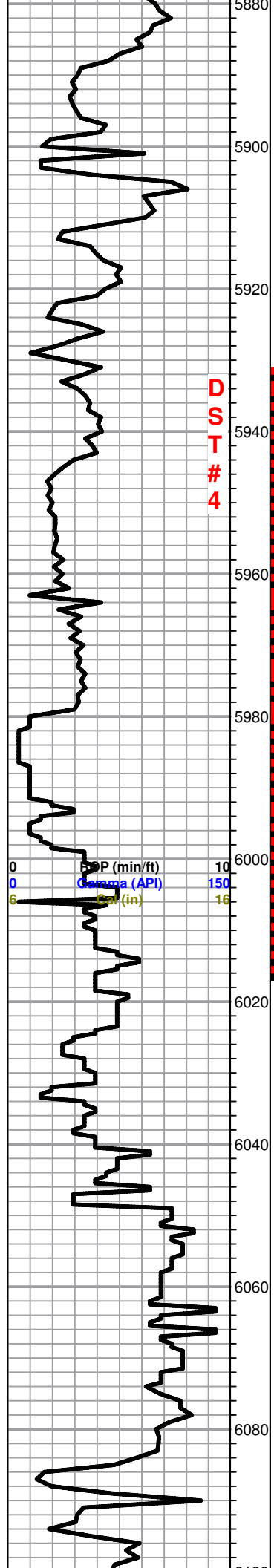
Morrow Sd. 5807

Sd. gray, F-Med. grain, well sorted, no flor., no odor, no stains

LS, cream to gray, FXL, motted, poor scattered porosity, few brown LS, cherty, no shows

Sh. gray, maroon, silty,





Black carb Sh.

Chester 5918 (-3189)

LS, cream to tan, FXL, chalky, poor scattered porosity, no shows

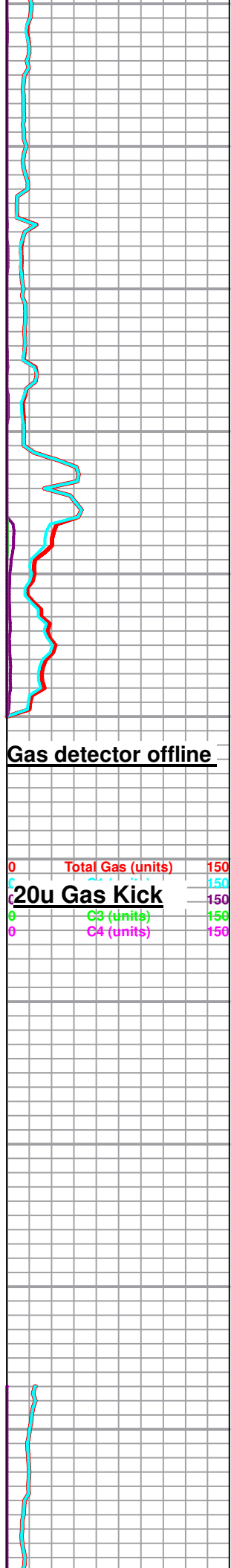
LS, cream, chalky, MXL, dns, poor visible porosity, no shows

LS, tan to brown, mottled, chalky, poor visible porosity, no shows

LS, cream, V. chalky, poor scattered porosity, Lt. flor. cut, NSFO, no odor, No stain

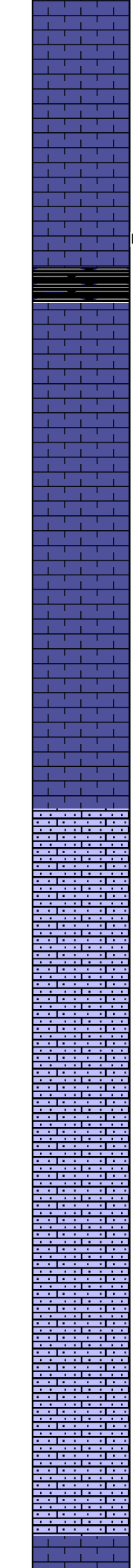
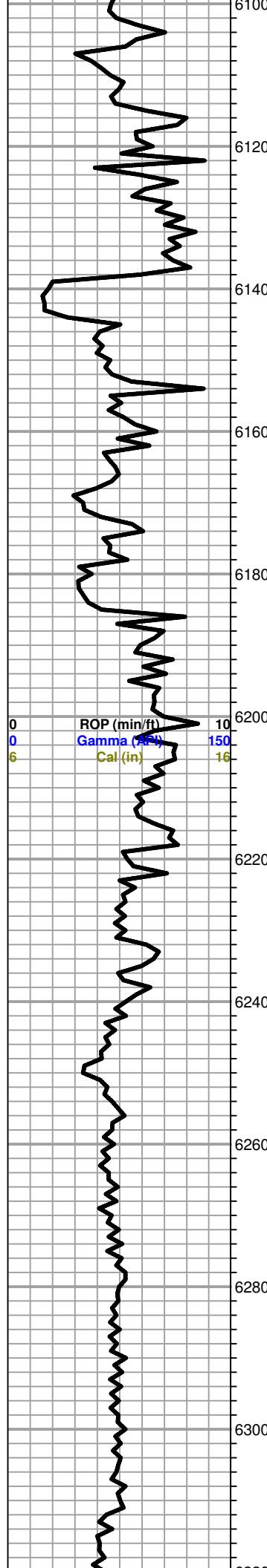
Slug of gray, black shale

Black carb Sh/ gray, silty, trace chert, white, ool, foss, no shows, trace Lt. flor. cut



Gas detector offline

0 Total Gas (units) 150
 0 C2 (units) 150
20u Gas Kick
 0 C3 (units) 150
 0 C4 (units) 150



Sh. gray, silty, greenish
 LS, tan, gray, V. chalky, poor visible porosity, trc. Lt. brown stain, fair flor. cut, trc. Lt. brown stain, odor???

LS, cream to white, FX, chalky, poor scattered porosity, no shows

LS, tan to brown, FXL, micro ool, poor scattered porosity, no shows

Ste. Gen 6215 (-3485)

Poor samples

LS, tan to gray, greenish, micro ool, FXL, dense, no shows

LS, cream to white, micro ool, dns, no shows, Slug of black gray, maroon, sh.

St. Louis 6314 (-3584)

