



**NOTES**

Company: American Warrior, Inc.

Lease: Handy 7-29

Field: Blue Bell

Location: SE-NW-NW-SW (2285' FNL & 522' FWL)

Sec:29 Twsp:34S Rge:31W

County:Seward State:Kansas

KB:2735' GL:2722'

API #: 15-175-22217-00-00

Contractor: Duke Drilling Co., Inc. (Rig #9)

Spud: 05/29/2014 Comp: 06/13/2014

RTD: 6500' LTD: 6503'

Mud Up: 4200' Type Mud: Chemical

Samples Saved From: 4300' to RTD  
 Drilling Time Kept From: 4300' to RTD  
 Samples Examined From: 4300' to RTD  
 Geological Supervision from: 4300' to RTD  
 Geologist on Well: Wyatt Urban

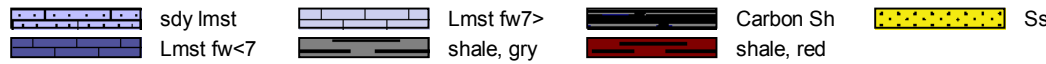
Surface Casing: 8 5/8@ 1715'

Electronic Surveys: Logged by Pioneer Energy Services: CNL/CDL, MEL, DIL

# American Warrior, Inc. Well Comparison

DRILLING WELL					COMPARISON WELL				COMPARISON WELL			
American Warrior-Handy 7-29 SE-NW-NW-SW 29-34S-31W					Charter Production-Sprinkle #1 C-NW-NW 29-34S-31W				American Warrior- Handy 5-29 SE-NW-NW-SE 29-34S-31W			
2730 KB					2729 KB		Structural Relationship		2730 KB		Structural Relationship	
Formation	Sample	Sub-Sea	Log	Sub-Sea	Log	Sub-Sea	Sample	Log	Log	Sub-Sea	Sample	Log
Heebner	4394	-1664	4391	-1661	4369	-1640	-24	-21	4371	-1641	-23	-20
Toronto	4408	-1678	4419	-1689	4388	-1659	-19	-30	4389	-1659	-19	-30
Lansing	4566	-1836	4556	-1826	4535	-1806	-30	-20	4535	-1805	-31	-21
Marmaton	5244	-2514	5239	-2509	5220	-2491	-23	-18	5234	-2504	-10	-5
Morrow	5789	-3059	5774	-3044	5758	-3029	-30	-15	5774	-3044	-15	0
Morrow Sd.	5826	-3096	5814	-3084	5804	-3075	-21	-9	5805	-3075	-21	-9
Chester	5924	-3194	5918	-3188	5909	-3180	-14	-8	5924	-3194	0	6
Ste. Gen	6229	-3499	6213	-3483	6211	-3482	-17	-1	6229	-3499	0	16
St. Louis	6325	-3595	6335	-3605	6310	-3581	-14	-24	6325	-3595	0	-10
RTD	6500	-3770	6500	-3770	6470	-3741	-29	-29	6500	-3770	0	0
LTD	6503	-3773	6503	-3773					6502	-3772	-1	-1

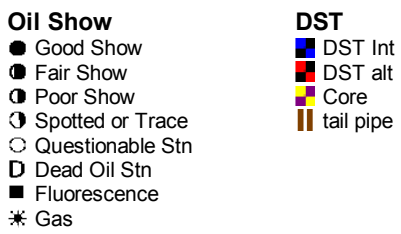
**ROCK TYPES**



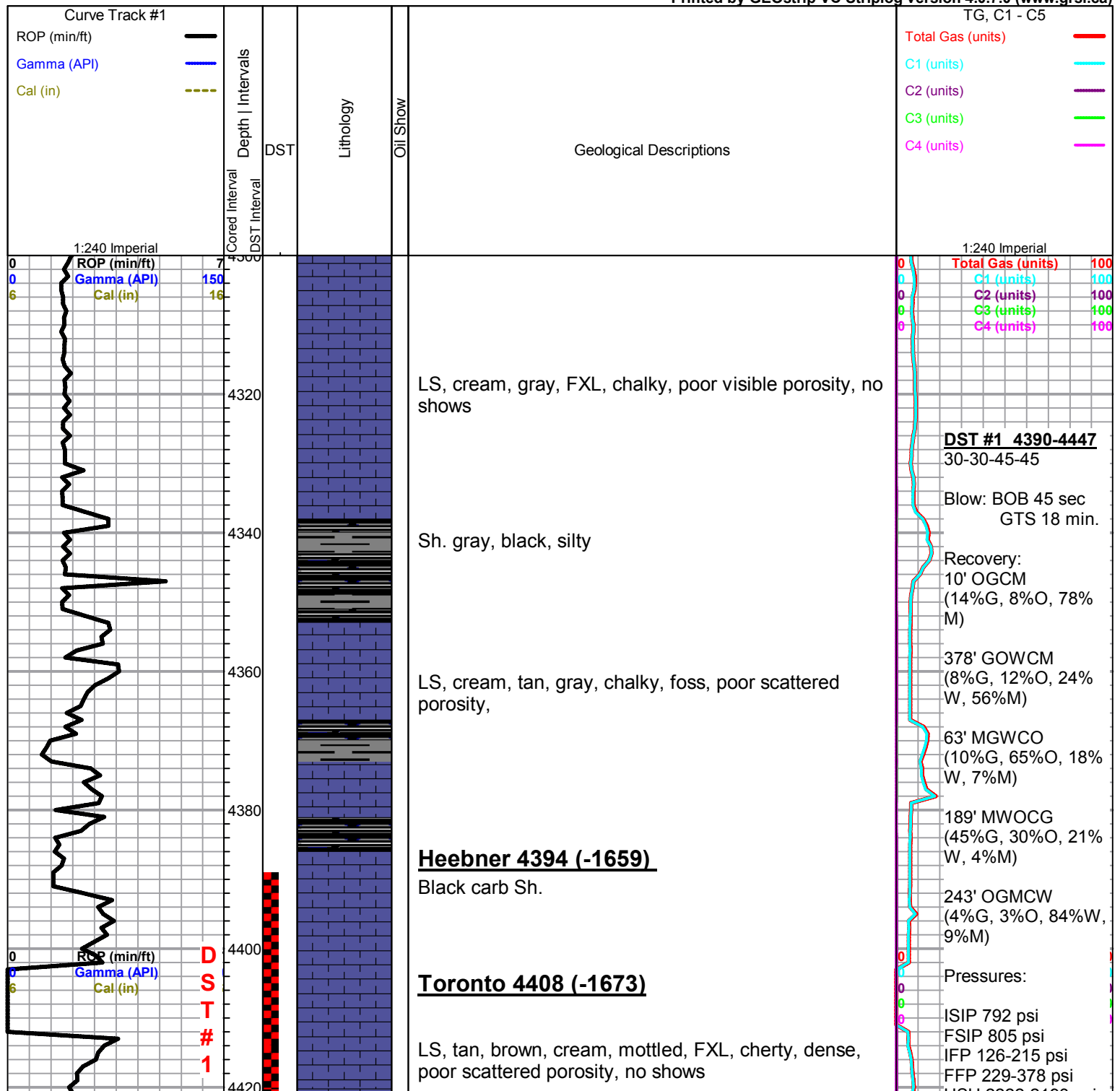
**ACCESSORIES**

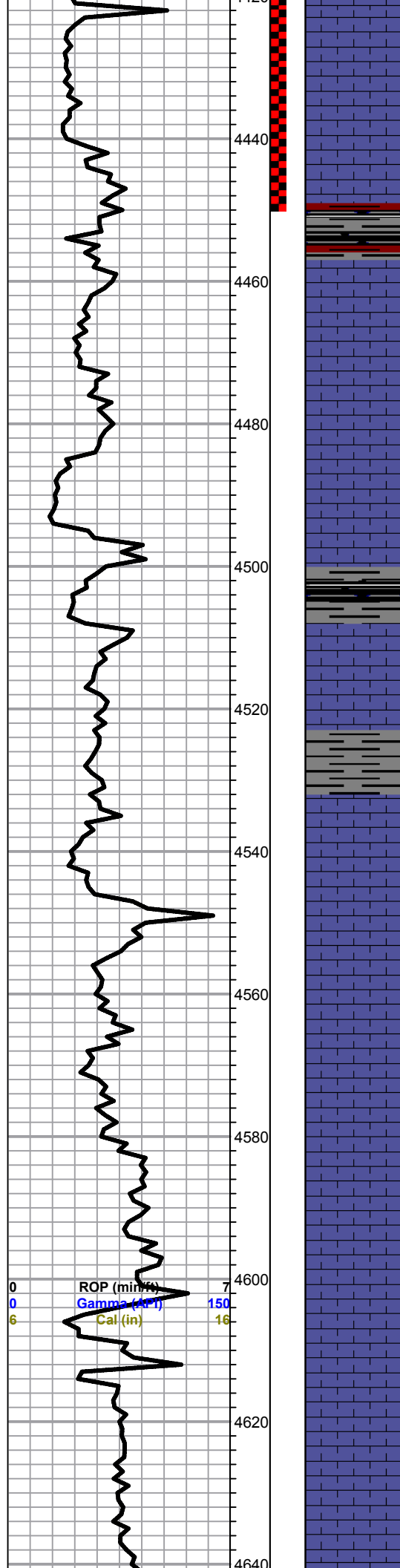


**OTHER SYMBOLS**



Printed by GEOstrip VC Striplog version 4.0.7.0 (www.grsi.ca)





LS, cream to white, FXL, poor visible porosity, chalky, Lt. FLor. cut, no stain, odor???

Sh. black, gray, silty, few maroon, trc. LS, cream to white, FXL, chalky, no shows

LS, cream to tan, FXL, foss, cherty, poor visible porosity, no shows

Sh. black, gray, silty

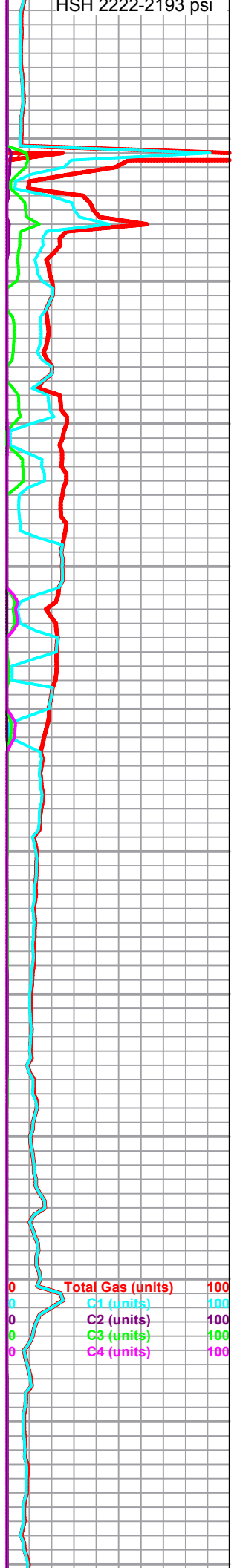
Sh. gray, silty, trc. LS cream to white, FXL, chalky, poor visible porosity, no shows

**Lansing 4566 (-1831)**

LS, cream, F-MXL, V. chalky, few foss, poor scattered porosity, NSFO, Lt. spotty flor. cut, no odor

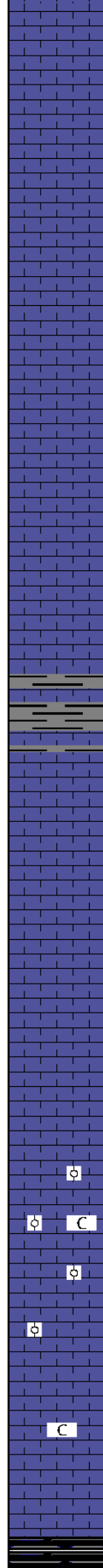
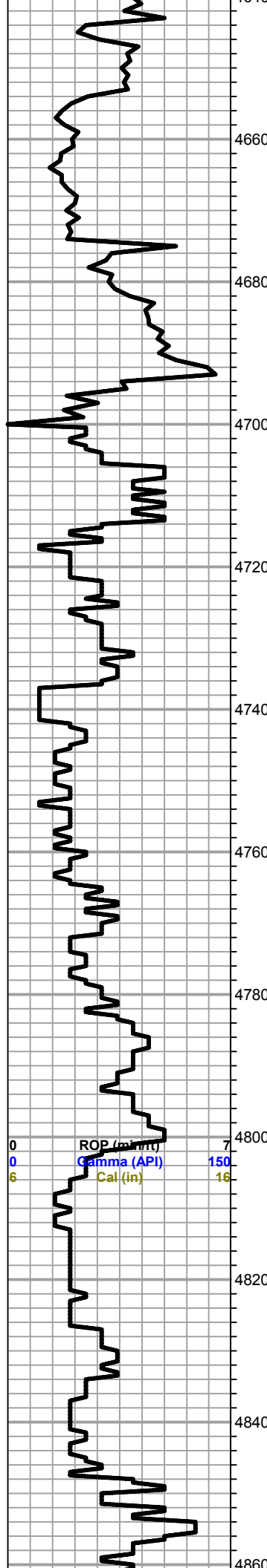
LS, tan, brown, FXL, chalky, few foss, poor scattered porosity, NSFO, trc. brown stain??, no odor, no flor. cut

LS, tan, brown, mottled, FXL, few foss, poor visible porosity, no shows



0 ROP (min) 7  
 0 Gamma (API) 150  
 6 Cal (in) 16

0 Total Gas (units) 100  
 0 C1 (units) 100  
 0 C2 (units) 100  
 0 C3 (units) 100  
 0 C4 (units) 100



LS, tan, FXL, poor visible porosity, chalky, few foss, no shows

LS, tan, brown, FXL, few foss, poor scattered porosity, chalky in parts, no shows

LS, gray, FXL, dense, cherty, poor visible porosity, no shows

LS, tan to cream, few foss, poor scatterd porosity, chalky

LS, cream to tan, FXL, gran. poor scattered porosity, slightly chalky in parts

LS, A/A, trc gray, silty shale

LS, tan, brown, cream, F-MXL, chalky, poor scattered porosity, no shows

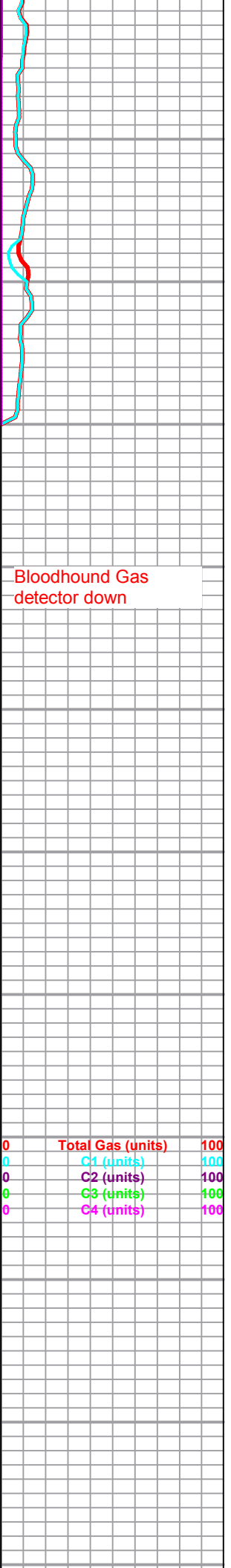
LS, tan to brown, FXL, dense, cherty, poor visible porosity, no shows

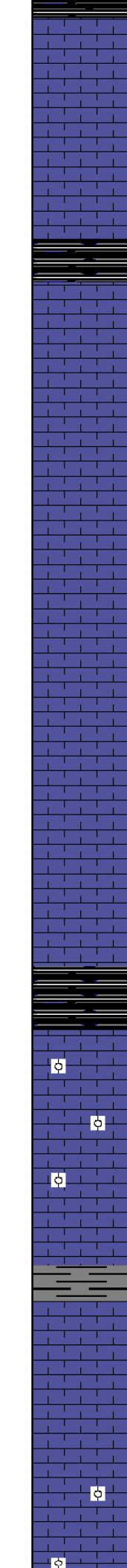
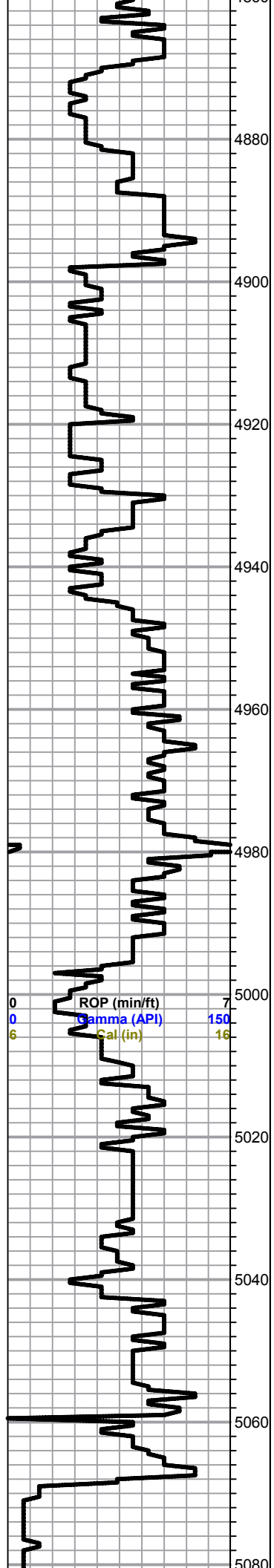
LS, tan,FXL, ool, cherty,poor scattered porosity, no shows

LS, tan, cream, V. chalky, few ool, poor scattered porosity, no shows

LS, tan to brown, FXL, cherty, few chalky, poor scattered porosity, no shows

Sh, black carb, gray





sh. black carb, gray,

4880 LS, tan, v. chalky, few foss, poor scattered porosity, no shows

4900 LS, white to gray, FXL, foss in parts, sl. chalky, poor scattered porosity, no shows

4920 LS, white to gray, FXL, foss in parts, poor scattered porosity, SL. chalky, no shows

4940 LS, tan to brown, FXL, poor scattered porosity, cherty in parts, no shows

4960 LS, cream to tan, FXL, few foss, poor visible porosity, no shows

4980

5000 Black carb. sh

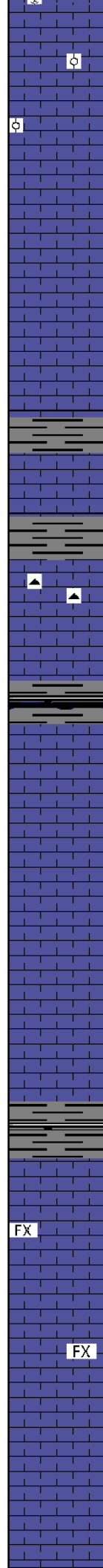
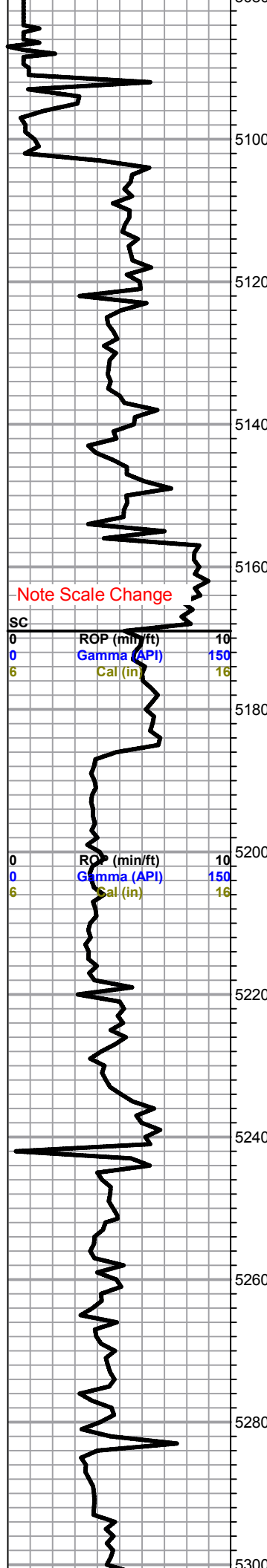
5020 LS, white, tan, ool, chalky, poor scattered porosity, no shows

5040 Slug gray sh.

5060 LS, tan, FXL, few foss, poor visible porosity, no shows

5080 LS, cream, tan, ool, chalky in pts, good vuggy scattered porosity,

0	Total Gas (units)	100
0	C1 (units)	100
0	C2 (units)	100
0	C3 (units)	100
0	C4 (units)	100



scattered porosity

LS, tan, F-MXL, ool, chalky, poor visible porosity, no shows

LS, cream to tan, FXL, poor vis porosity, no shows

Sh. gray, silty, trc, LS, cream to tan, FXL, chalky in parts, NSFO

LS, tan, brown, FXL, poor visible porosity, trace opaque and brown chert,

**BKC 5174 (-2439)**

Sh. gray, black silty

LS, tan to cream, ool, chalky, poor visible porosity, no shows, V. Lt. flor. cut, no odor, no stain

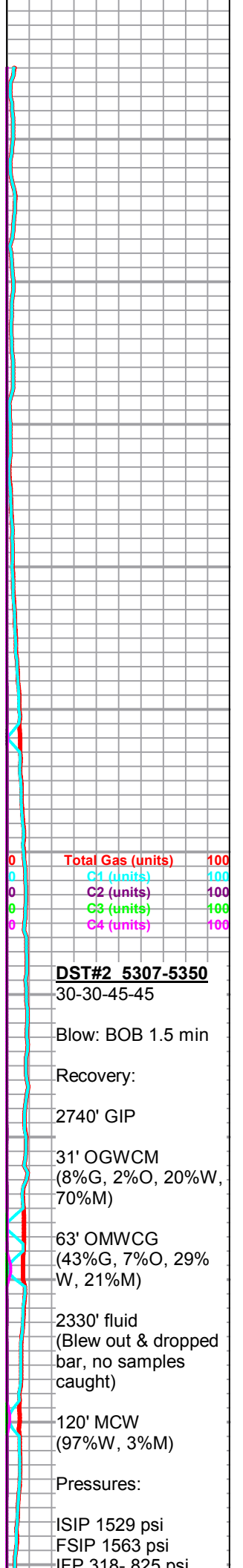
Sh. gray, black, silty

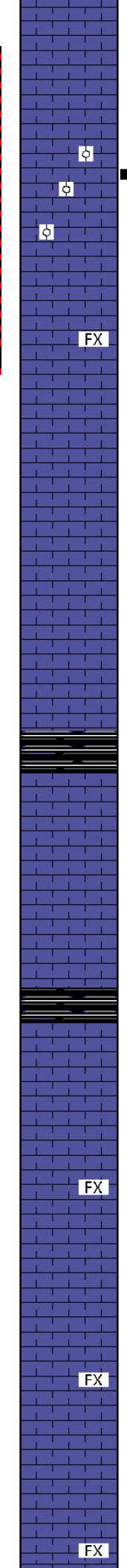
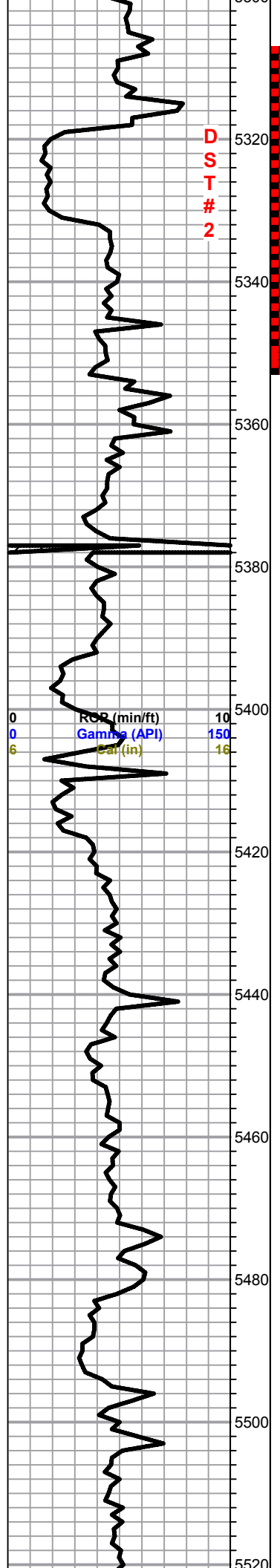
**Marmaton 5244 (-2509)**

LS, tan to brown, FXL, dense, cherty, poor visible porosity, no shows

LS, cream to tan, FXL, dense, cherty poor visible porosity, no shows

LS, cream to chalky, few scattered vuggy porosity, V. Lt. flor cut,





LS, tan, FXL, chalky, poor visible porosity, no shows

LS, tan to cream, ool, V. chalky, poor scattered porosity, good flor. cut no odor

LS, tan, FXL, chalky in parts, poor scattered porosity, no shows

LS, cream to tan, FXL, dense, few foss, poor scattered porosity, no shows

LS, cream to tan, FXL, poor visible porosity, no shows

**Cherokee 5405 (-2670)**

Sh. black carb

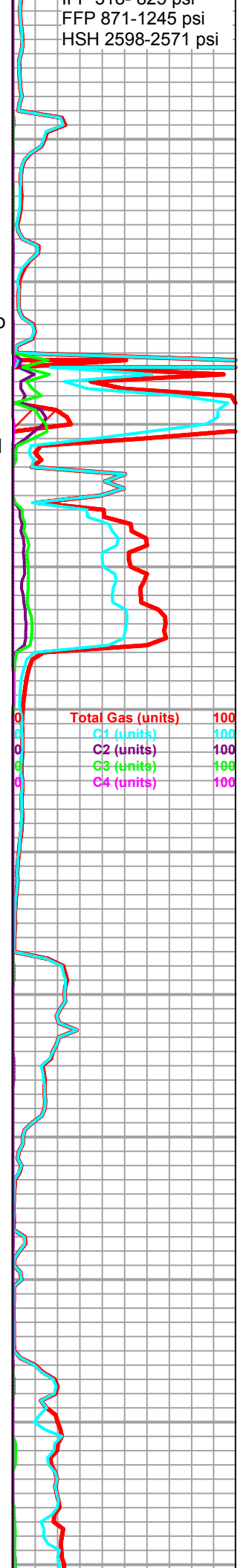
LS, cream to tan, FXL, dns. poor visible porosity, no shows

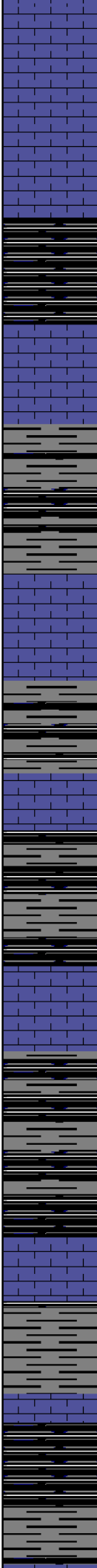
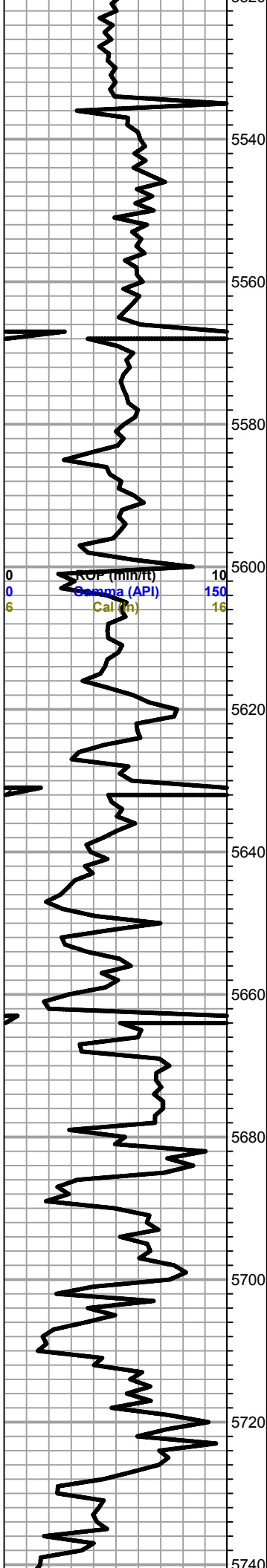
Sh. black carb

LS, tan to brown, mottled, FXL, few foss, sl. chalky, poor visible porosity, no shows

LS, cream to tan, mottled, FXL, dense, poor visible porosity, no shows

LS, brown to cream, FXL, cherty, no shows





LS, A/A

Slug black carb Sh.

LS, cream to tan, chalky, few foss, poor scattered porosity, no shows

Sh. gray, black, silty in pts

Sh. A/A, trc. LS, cream, chalky, few brown, cherty, no shows

Black carb sh.

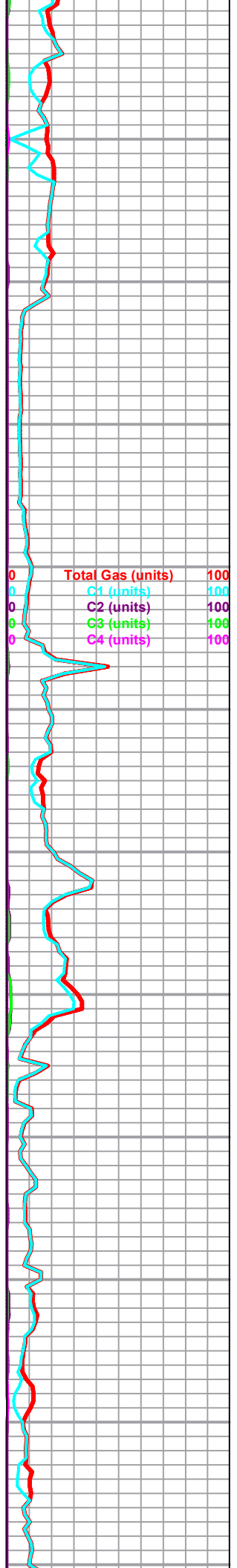
LS, tan, cream, brown, mottled, FXL, cherty, poor visible porosity, no shows

Sh. black carb

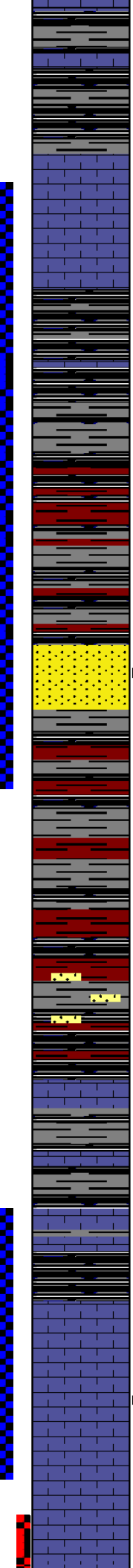
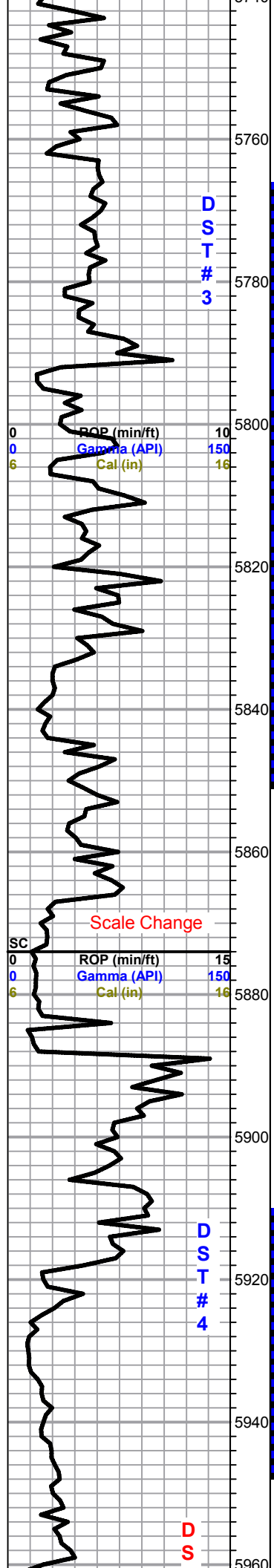
Trc. LS, cream, FXL, chalky, poor visible porosity, no shows

LS, tan, brown, motled, FXL, dense, poor visible porosity, no shows

Slug black carb, gry, shale







Sh. black carb, maroon, silty

LS, tan to brown, mottled, FXL, dense, poor visible porosity, no shows

**Morrow 5789 (-3054)**

Sh. black carb. maroon, silty

Sh. black carb, gray, maroon, silty

**Morrow Sd. 5825 (-3090)**

Sd. F- M grained, well sorted, no shows, Lt. Flor. sppty shows,

Sh. gray, black, maroon, trc. LS, tan, cream, FXL, dense, poor visible porosity, no shows

Sh. black, gray, greenish, trc. Sd . white, F. grain, well sorted, no shows

LS, tan, cream, FXL, dense, chakly, in parts, poor scattered porosity, no shows  
 Trc. Gry, black, shale

Sh. gray, black, silty in parts, no shows

**Chester 5924 (-3194)**

LS, tan, chalky, strong flor. cut, no odor, no SFO

Sh. back carb. gry, silty

**DST # 3 5766-5848**  
30-30-45-45

Blow: Weak blow

Recovery:  
10' Mud

Pressures:  
ISIP 102  
FSIP 100 psi  
IFP 32-78 psi  
FFP 62-87 psi  
HSH 2961-2962psi

Total Gas (units)	100
C1 (units)	100
C2 (units)	100
C3 (units)	100
C4 (units)	100

**DST #4 5908-5946**  
30-30-30-30

Blow: BOB 20 sec.

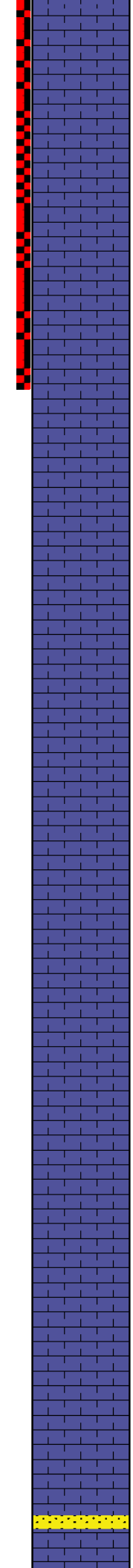
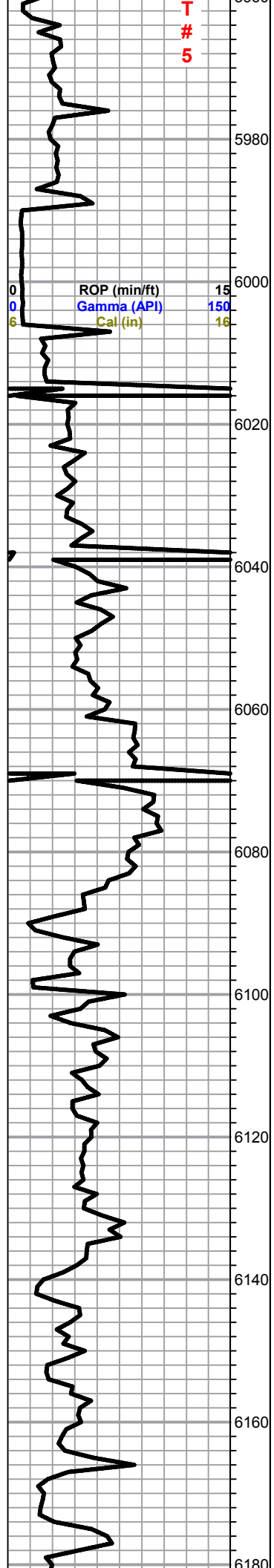
Recovery:

60' GCM  
(4%G, 96%M)

Pressures:  
ISIP 539 psi  
FSIP 851 psi  
IFP 26-29 psi  
FFP 18-22 psi  
HSH 3036-2809 psi

D  
S

T  
#  
5



LS, tan, cream, FXL, chalky, poor visible porosity, no shows, trc. black carb SH.

LS, cream, V. chalky, foss, poor scattered porosity, Lt. FLor, cut, no odor

LS, cream, V. chalky, foss, poor visible posity good flor. cut, no odor

LS, tan, brown, mottled, FXL, chalky, poor scattered porosity, no shows

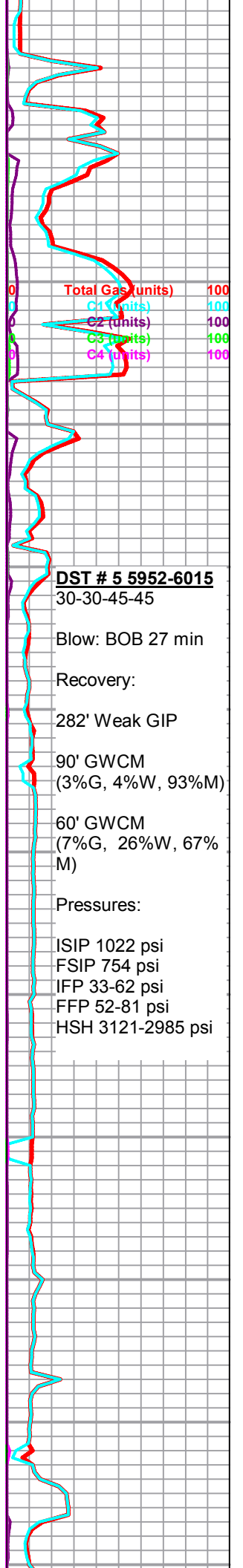
LS, brown, FXL, dense, poor scattered porosity, no shows,  
Sh. black gry, silty

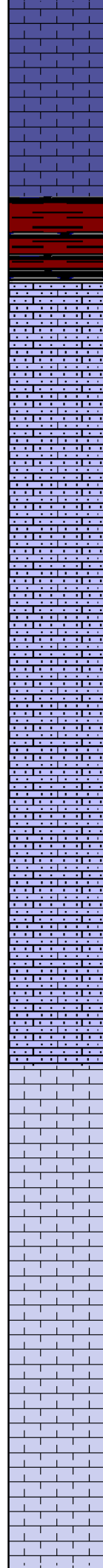
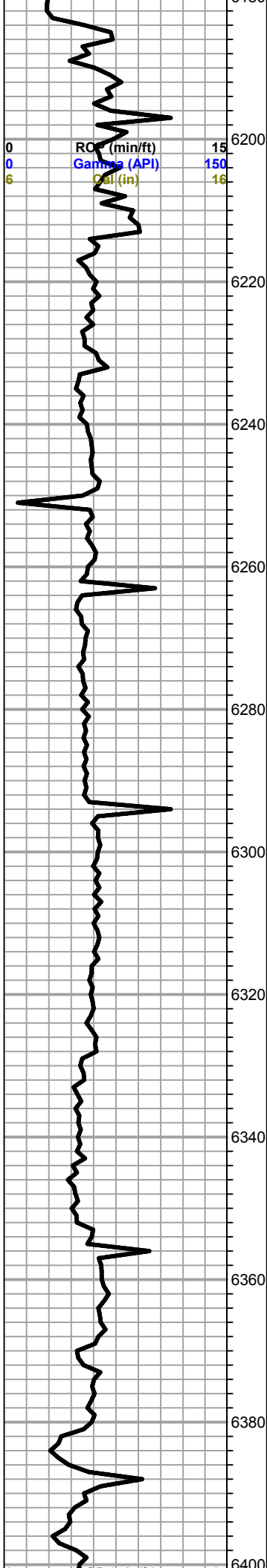
LS, cream, tan, FXL, few foss, poor visible porosity, no shows, Lt. flor. cut, trc. black, gry, sh.

LS, cream to tan, FXL, chalky, poor visible porosity, Lt. flor. cut, trc. Lt. Flor cut, no shows

LS, cream to tan, FXL, ool, dns, few foss, poor scattered porosity, no shows

LS, tan, cream, FXL, few ool, poor visible porosity, Lt. flor. cut. no shows





LS, cream, FXL, cherty, ool, poor visible porosity, fair/ poor flor. cut, no odor, no stain, Trc. Sd. tan, M. grain, well sorted, NSFO, Lt. flor cut

Slug gray, maroon, black carb sh.

**Ste. Gen 6214(-3479)**

LS cream to tan, Micro ool, chalky, friable, no shows

LS, tan, micro ool, no shows

LS, tan, sub micro ool, chalky, no shows

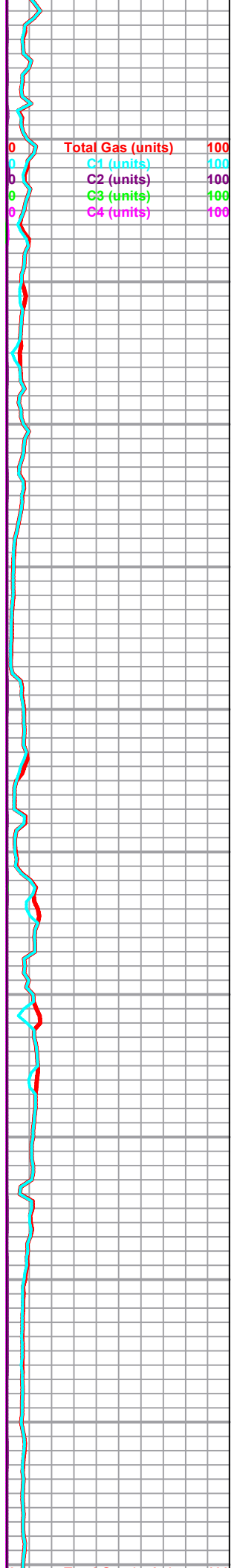
LS, tan, brown, micro ool, chalky, no shows, trc. black sh

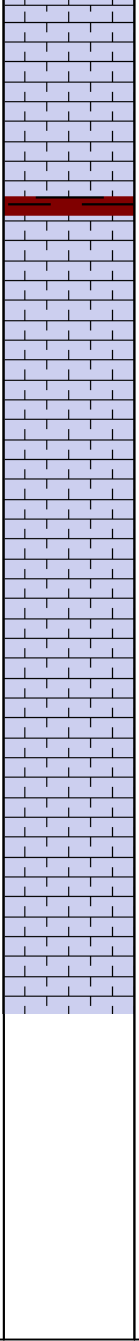
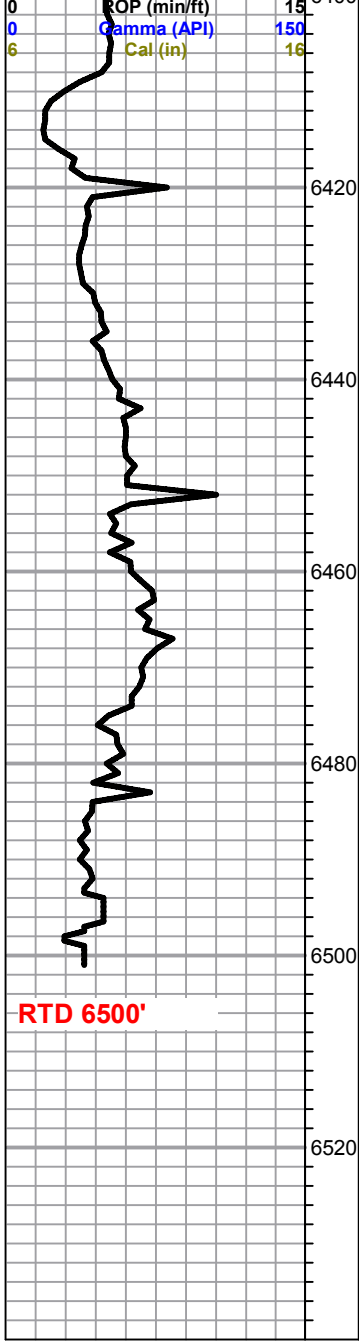
**St. Louis 6325 (-3595)**

LS, cream hite, FXL, ool, poor scattered porosity, NSFO, Lt trc. Flor cut.

■ LS, cream to white, FXL, ool, poor scattered porosity, NSFO, Lt. trc. Flor cut, NSFO, no odor

■ LS, cream, white, ool, poorly developed, chalky, poor scattered porosity, Lt. Flor. cut, No odor, no stains





LS, white, cream, ool in pts, poor scattered porosity, cherty, Lt. trc. flor. NSFO, no odor

Slug brick red, maroon shale

LS, cream, white, ool, FXL, poor visible porosity, Lt. flor. cut, no odor

LS, white, FXL, poor visible porosity, cherty, dense,

LS, white, cream, FXL, dense, cherty, poor visible porosity, no shows,

