

ADVANTAGE ELEVATIONS

OIL FIELD SURVEYORS

BOX 8604 - PRATT, KS 67124
(620) 672-6491

617143

INVOICE NO.

MURFIN DRILLING CO INC

OPERATOR

1-9

NO.

DAVID

FARM

Stafford

COUNTY

9

S

23s

T

12w

R

330' FNL & 1320' FWL of Sec.

LOCATION

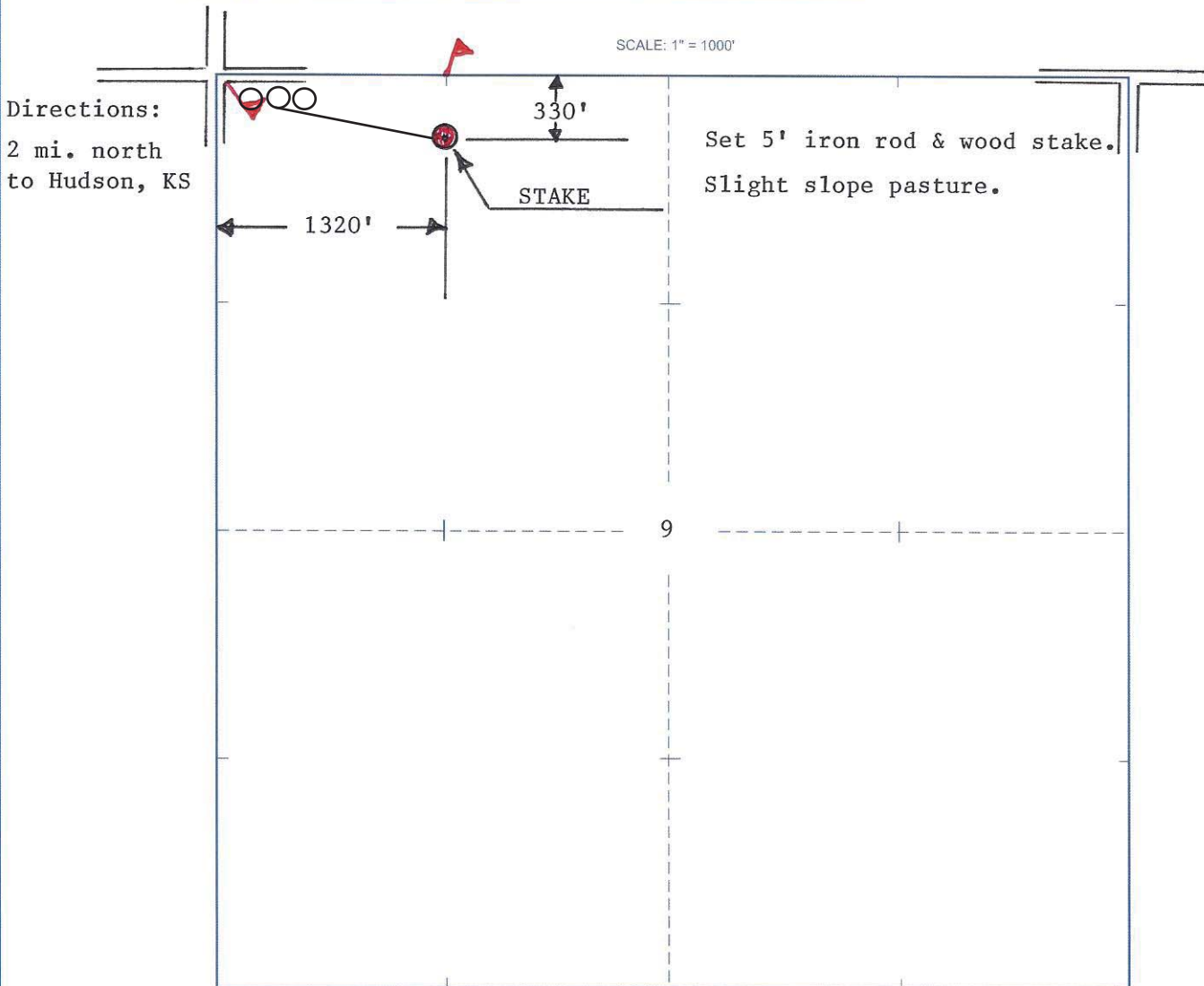
1845' GR

ELEVATION:

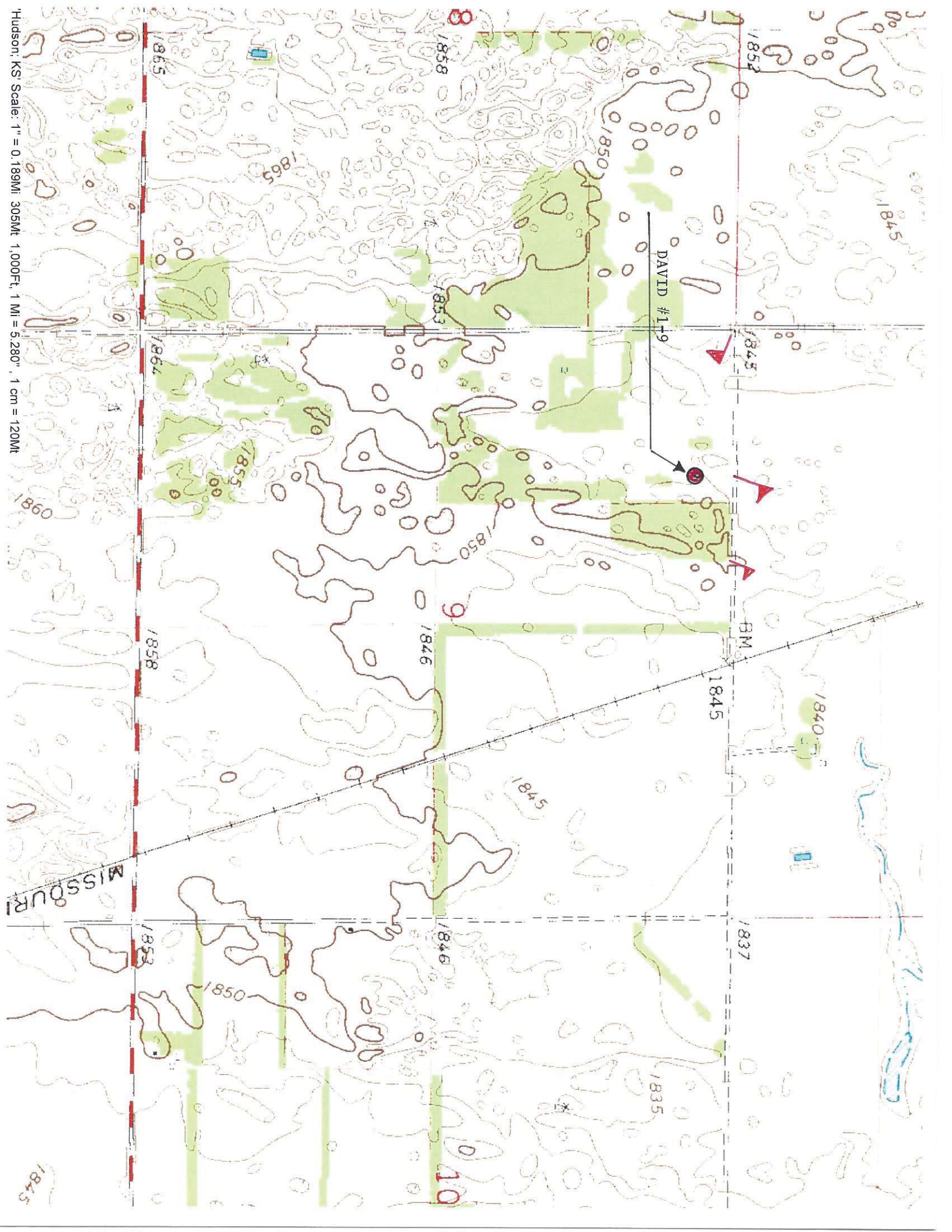


MURFIN DRILLING CO INC
250 N Water St., Ste 300
Wichita, KS 67202

AUTHORIZED BY: Shauna Gunzelman



DATE STAKED: 6/17/14



Hudson, KS Scale: 1" = 0.189MI, 305Mt, 1.000Ft, 1 MI = 5.280", 1 cm = 120Mt

1845

MISSOURI

DAVID #1-9

