

# ADVANTAGE ELEVATIONS

OIL FIELD SURVEYORS

BOX 8604 - PRATT, KS 67124  
(620) 672-6491

628141

INVOICE NO.

LOTUS OPERATING CO. LLC  
OPERATOR

1  
NO.

PETROSKY  
FARM

Pratt  
COUNTY

23 26s 14w  
S T R

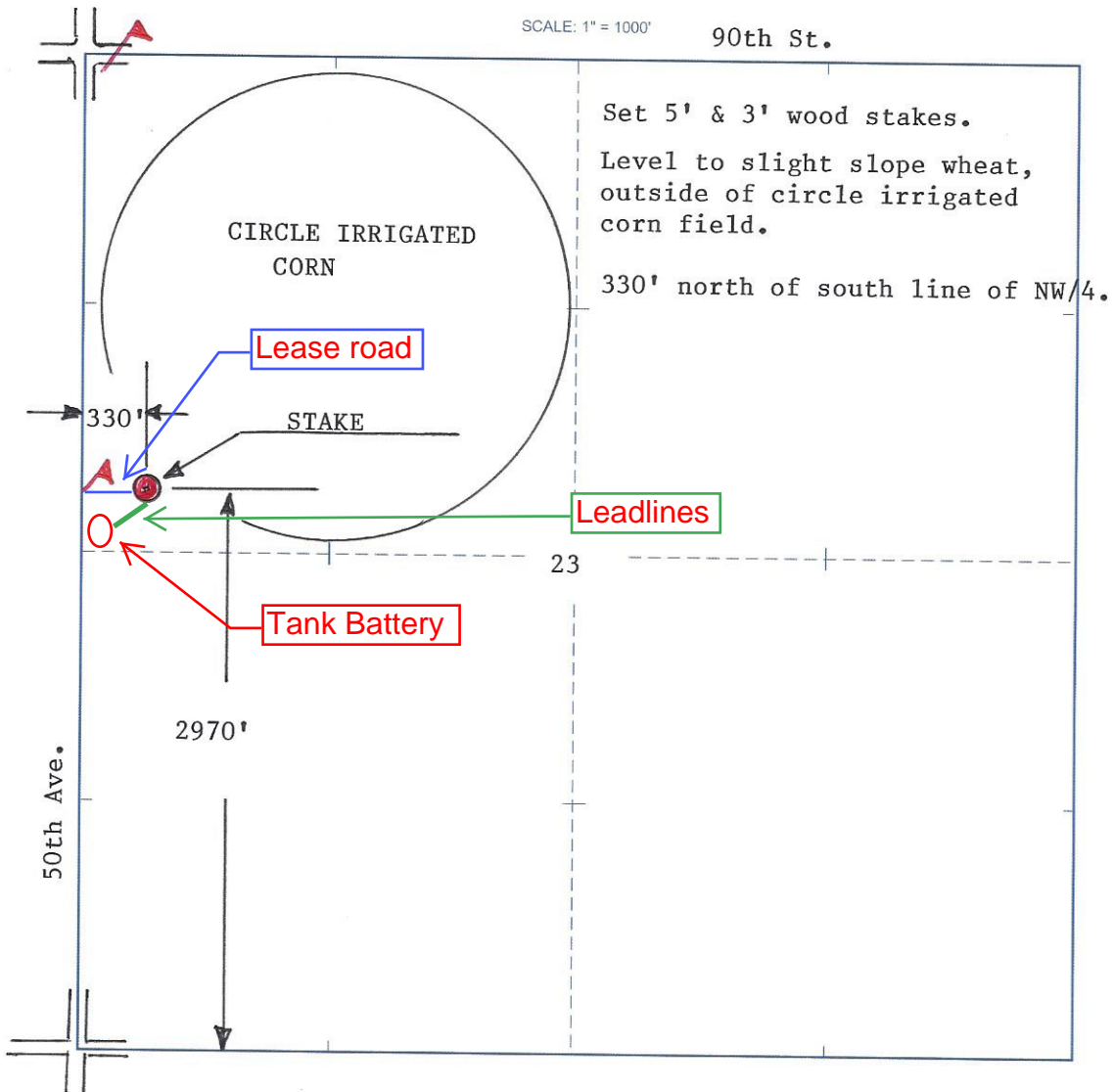
C SW SW NW  
LOCATION

ELEVATION: 1977' GR



LOTUS OPERATING CO LLC  
100 S Main, Ste 420  
Wichita, KS 67202

AUTHORIZED BY: Tim Hellman



DATE STAKED: 6/29/14

P

8

1988

1983

1974

1970

22

1980

23

1972

285

1981

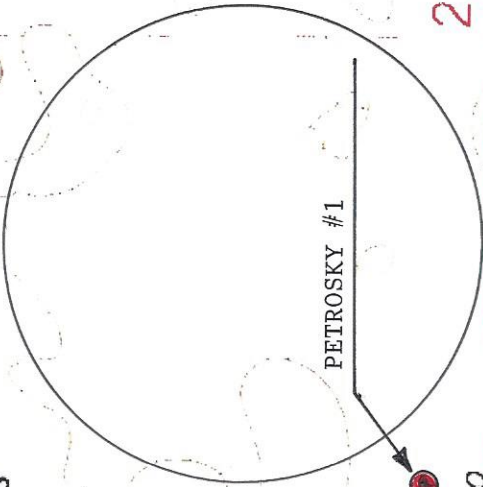
1972

1973

OLD

INDIAN

TREATY



Well

'Byers, KS' Scale: 1" = 0.189MI 305Mt 1,000Ft, 1 MI = 5.280" , 1 cm = 120Mt