

# ADVANTAGE ELEVATIONS

OIL FIELD SURVEYORS

BOX 8604 - PRATT, KS 67124  
(620) 672-6491

78141

INVOICE NO.

LOTUS OPERATING CO LLC  
OPERATOR

1  
NO.

PETROSKY  
FARM

Pratt  
COUNTY

23 26s 14w  
S T R

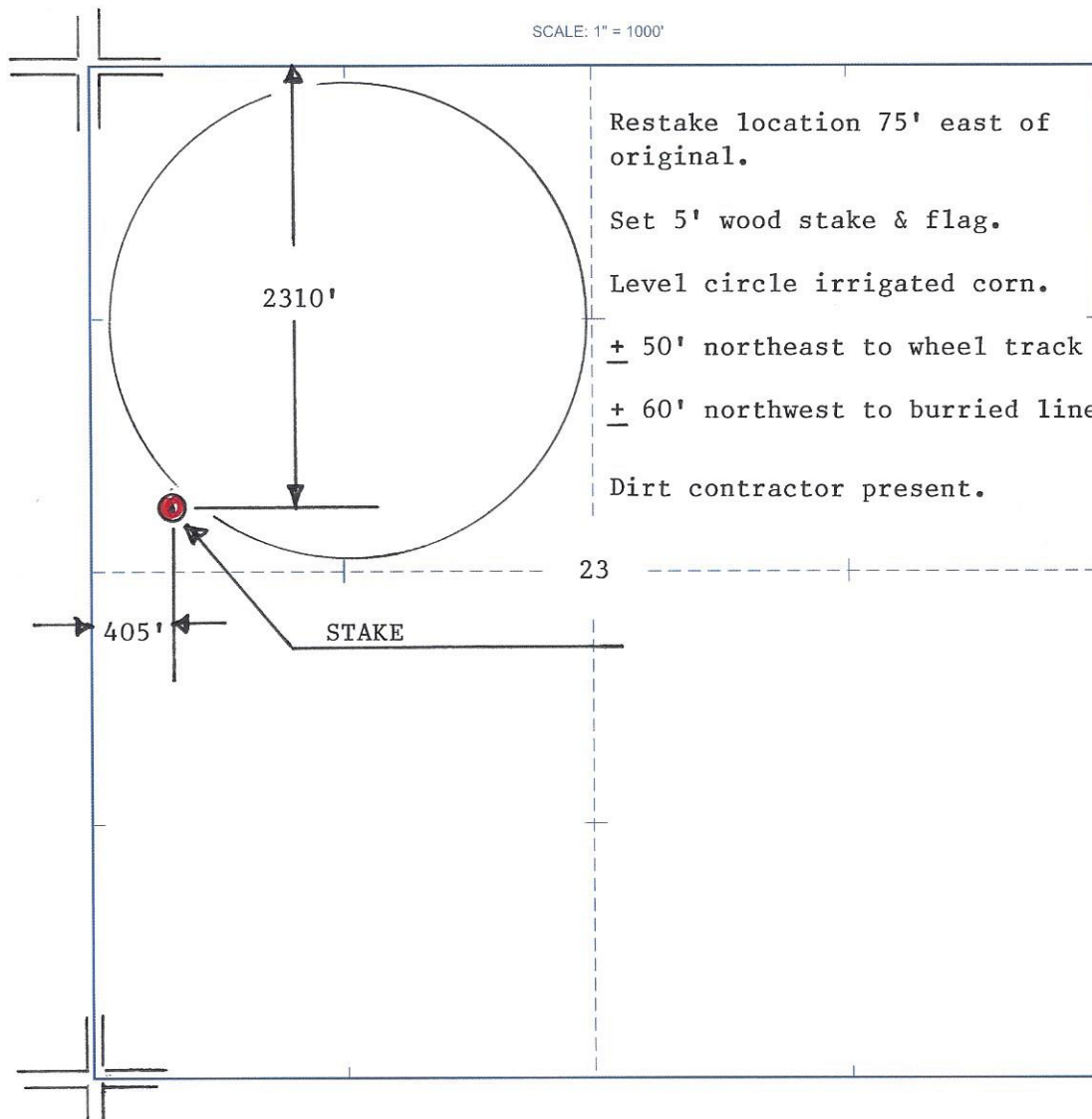
75' E of SW SW NW  
LOCATION

ELEVATION: 1977' GR



LOTUS OPERATING CO INC  
100 S Main, Ste 420  
Wichita, KS 67202

AUTHORIZED BY: Tim Hellman



DATE STAKED: 7/8/14

8

1988

1983

1974

1970

22

1980

23

1972

Well

PETROSKY #1

OLD

INDIAN

TREATY

1981

1972

1973

1980

1980

1970

Byers, KS, Scale: 1" = 0.189MI, 305Mt, 1,000Ft, 1 MI = 5,280', 1 cm = 120Mt

