



TRILOBITE TESTING, INC.

DRILL STEM TEST REPORT

Herman L. Loeb LLC
 P.O.Box 838
 Lawrenceville Ill. 62439
 ATTN: Jon Christensen

20-27s-18w Kiowa Ks.
Randel#2-20
 Job Ticket: 51885 **DST#: 1**
 Test Start: 2014.03.12 @ 12:09:39

GENERAL INFORMATION:

Formation: **Lans. A**
 Deviated: No Whipstock: ft (KB)
 Time Tool Opened: 13:57:09
 Time Test Ended: 19:24:24
 Interval: **4207.00 ft (KB) To 4223.00 ft (KB) (TVD)**
 Total Depth: 4223.00 ft (KB) (TVD)
 Hole Diameter: 7.88 inches Hole Condition: Fair
 Test Type: Conventional Bottom Hole (Initial)
 Tester: Gary Pevoteaux
 Unit No: 56
 Reference Elevations: 2218.00 ft (KB)
 2205.00 ft (CF)
 KB to GR/CF: 13.00 ft

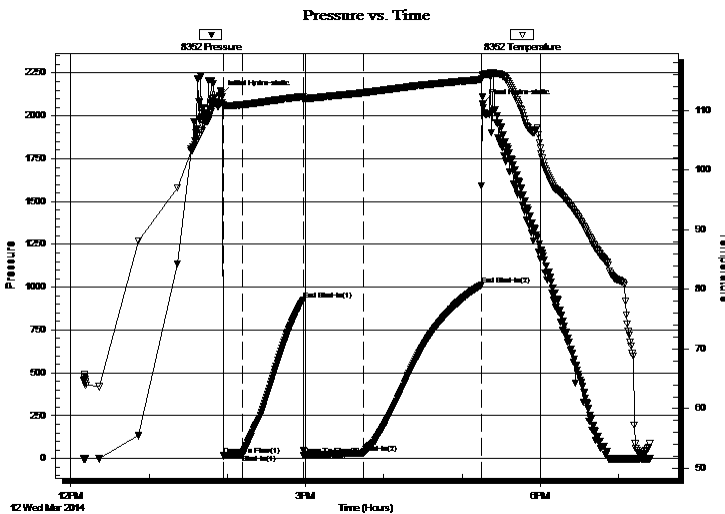
Serial #: 8352

Inside

Press @ Run Depth: 31.16 psig @ 4208.00 ft (KB) Capacity: 8000.00 psig
 Start Date: 2014.03.12 End Date: 2014.03.12 Last Calib.: 2014.03.12
 Start Time: 12:09:44 End Time: 19:24:23 Time On Btm: 2014.03.12 @ 13:55:39
 Time Off Btm: 2014.03.12 @ 17:15:54

TEST COMMENT: IF: Strong blow . B.O.B. in 9 mins.
 IS: No blow .
 FF: Fair to strong blow . B.O.B. in 22 mins.
 FS: No blow .

PRESSURE SUMMARY



Time (Min.)	Pressure (psig)	Temp (deg F)	Annotation
0	2125.33	111.26	Initial Hydro-static
2	16.61	110.85	Open To Flow (1)
16	22.08	110.92	Shut-In(1)
63	923.90	112.31	End Shut-In(1)
63	17.29	112.00	Open To Flow (2)
109	31.16	112.95	Shut-In(2)
199	1011.24	115.15	End Shut-In(2)
201	2070.00	115.95	Final Hydro-static

Recovery

Length (ft)	Description	Volume (bbl)
30.00	SOCM 2%o 98%m	0.15
0.00	450 ft.of GIP	0.00

Gas Rates

	Choke (inches)	Pressure (psig)	Gas Rate (Mcf/d)



**TRILOBITE
TESTING, INC.**

DRILL STEM TEST REPORT

FLUID SUMMARY

Herman L. Loeb LLC

20-27s-18w Kiowa Ks.

P.O.Box 838
Lawrenceville Ill. 62439

Randel#2-20

Job Ticket: 51885

DST#: 1

ATTN: Jon Christensen

Test Start: 2014.03.12 @ 12:09:39

Mud and Cushion Information

Mud Type: Gel Chem

Cushion Type:

Oil API:

deg API

Mud Weight: 10.00 lb/gal

Cushion Length:

ft

Water Salinity:

5000 ppm

Viscosity: 59.00 sec/qt

Cushion Volume:

bbbl

Water Loss: 8.99 in³

Gas Cushion Type:

Resistivity: 0.00 ohm.m

Gas Cushion Pressure:

psig

Salinity: 5000.00 ppm

Filter Cake: 0.20 inches

Recovery Information

Recovery Table

Length ft	Description	Volume bbbl
30.00	SOCM 2%o 98%m	0.148
0.00	450 ft.of GIP	0.000

Total Length: 30.00 ft Total Volume: 0.148 bbl

Num Fluid Samples: 0

Num Gas Bombs: 0

Serial #: none

Laboratory Name:

Laboratory Location:

Recovery Comments:

