

CONSOLIDATED
Oil Well Services, LLC

REMIT TO
Consolidated Oil Well Services, LLC
Dept. 970
P.O. Box 4346
Houston, TX 77210-4346

MAIN OFFICE
P.O. Box 884
Chanute, KS 66720
620/431-9210 • 1-800/467-8676
Fax 620/431-0012

INVOICE

Invoice # 268805

Invoice Date: 06/13/2014 Terms: 15/15/30,n/30

Page 1

LARIO OIL & GAS
P.O. BOX 1093
GARDEN CITY KS 67846
(316)265-5611

ZELLNER 2-33
46926
33-17S-35W
06-11-2014
KS

drilling AFE 14

Description	Hours	Unit Price	Total
CEMENT PUMP (SURFACE)	1.00	1150.00	1150.00
EQUIPMENT MILEAGE (ONE WAY)	45.00	5.25	236.25

Part Number	Description	Qty	Unit Price	Total
1102	CALCIUM CHLORIDE (50#)	677.00	.9400	636.38
1104S	CLASS "A" CEMENT (SALE)	240.00	18.5500	4452.00
1118B	PREMIUM GEL / BENTONITE	451.00	.2700	121.77
4432	8 5/8" WOODEN PLUG	1.00	100.7500	100.75

Sublet Performed	Description	Total
9996-130	CEMENT MATERIAL DISCOUNT	-796.64
9995-130	CEMENT EQUIPMENT DISCOUNT	-341.45

Description	Hours	Unit Price	Total
693 TON MILEAGE DELIVERY	1.00	890.10	890.10

Handwritten signature
JUN 18 2014
Handwritten initials

Amount Due 8020.09 if paid after 07/13/2014

Parts:	5310.90	Freight:	.00	Tax:	367.91	AR	6817.07
Labor:	.00	Misc:	.00	Total:	6817.07		
Sublt:	-1138.09	Supplies:	.00	Change:	.00		

Signed _____ Date _____



CONSOLIDATED
Oil Well Services, LLC

268805

TICKET NUMBER 46926
LOCATION Oakley, KS
FOREMAN Miles Shaw

PO Box 884, Chanute, KS 66720
620-431-9210 or 800-467-8676

**FIELD TICKET & TREATMENT REPORT
CEMENT**

DATE	CUSTOMER #	WELL NAME & NUMBER	SECTION	TOWNSHIP	RANGE	COUNTY	
6-1-14	4793	Zelner #2-35	33	175	35W	Wichita	
CUSTOMER		Lario Oil & Gas	modlocks Wood 22 3 1/2 N W into	TRUCK #	DRIVER	TRUCK #	DRIVER
MAILING ADDRESS				731	Loaf R		
CITY	STATE	ZIP CODE					

JOB TYPE Surface HOLE SIZE 12 1/4" HOLE DEPTH 374 CASING SIZE & WEIGHT 8 5/8 28 #
 CASING DEPTH 372.21 DRILL PIPE _____ TUBING _____ OTHER _____
 SLURRY WEIGHT 14.8 SLURRY VOL 1.35 WATER gal/sk _____ CEMENT LEFT in CASING 20'
 DISPLACEMENT 22 1/2 bbls DISPLACEMENT PSI _____ MIX PSI _____ RATE _____

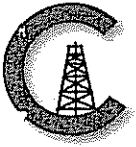
REMARKS: Safety and rig up on Duke drilling Rig # 4. Circulate casing
mix 240 sls Class A cement with 38 calcium 289 el shut down Release
plus displace 22 1/2 bbls water Shut in Cement did circulate
3 bbls top it

Thanks Miles
& crew

ACCOUNT CODE	QUANTITY or UNITS	DESCRIPTION of SERVICES or PRODUCT	UNIT PRICE	TOTAL
5401S	1	PUMP CHARGE	1150.00	1150.00
5406	45	MILEAGE	5.25	236.25
5407A	11.3 Tons	Tan Midbase delivery	1.75	890.10
1102	6.77 #	Calcium Chloride	.94	636.38
1104S	240 sls	Class A cement	18.55	4452.00
1118B	451 #	Bentonite gel	.27	121.77
4432	1	8 5/8" Wooden Plug	100.75	100.75
		Subtotal		7580.25
		less 15% discount		1138.09
		Subtotal		6442.16
		SALES TAX		307.91
		ESTIMATED TOTAL		6817.07

AUTHORIZATION Hecto. M. Shaw TITLE _____ DATE _____

I acknowledge that the payment terms, unless specifically amended in writing on the front of the form or in the customer's account records, at our office, and conditions of service on the back of this form are in effect for services identified on this form.



CONSOLIDATED
Oil Well Services, LLC

REMIT TO
FINV
Consolidated Oil Well Services, LLC
Dept. 970
P.O. Box 4346
Houston, TX 77210-4346

MAIN OFFICE
P.O. Box 884
Chanute, KS 66720
620/431-9210 • 1-800/467-8676
Fax 620/431-0012

INVOICE

Invoice # 268984

Invoice Date: 06/24/2014 Terms: 15/15/30,n/30

Page 1

LARIO OIL & GAS
P.O. BOX 1093
GARDEN CITY KS 67846
(316)265-5611

ZELLNER 2-33

46974
33-17-35
06-22-2014
KS

drilling/longstring
AFG 14127
6-26-14 LR

Description	Hours	Unit Price	Total
SINGLE PUMP	1.00	3175.00	3175.00
EQUIPMENT MILEAGE (ONE WAY)	40.00	5.25	210.00

Part Number	Description	Qty	Unit Price	Total
1126	OIL WELL CEMENT	220.00	23.7000	5214.00
1110A	KOL SEAL (50# BAG)	1100.00	.5600	616.00
1131	60/40 POZ MIX	400.00	15.8600	6344.00
1118B	PREMIUM GEL / BENTONITE	2752.00	.2700	743.04
1107	FLO-SEAL (25#)	100.00	2.9700	297.00
1144G	MUD FLUSH (SALE)	500.00	1.0000	500.00
4159	FLOAT SHOE AFU 5 1/2"	1.00	433.7500	433.75
4454	5 1/2" LATCH DOWN PLUG	1.00	567.0000	567.00
4130	CENTRALIZER 5 1/2"	16.00	61.0000	976.00
4104	CEMENT BASKET 5 1/2"	1.00	290.0000	290.00
4283	DV TOOL W/ LATCH DOWN	1.00	4900.0000	4900.00

Sublet Performed	Description	Total
9996-130	CEMENT MATERIAL DISCOUNT	-3132.12
9995-130	CEMENT EQUIPMENT DISCOUNT	-796.95

Description	Hours	Unit Price	Total
530 TON MILEAGE DELIVERY	1.00	964.00	964.00
693 TON MILEAGE DELIVERY	1.00	964.00	964.00

Amount Due 27895.58 if paid after 07/24/2014

Parts:	20880.79	Freight:	.00	Tax:	1446.52	AR	23711.24
Labor:	.00	Misc:	.00	Total:	23711.24		
Sublt:	-3929.07	Supplies:	.00	Change:	.00		

Signed _____

Date _____



CONSOLIDATED
Oil Well Services, LLC

268984

TICKET NUMBER 46974

LOCATION Oakley K.

FOREMAN Danen

miles

PO Box 884, Chanute, KS 66720
620-431-9210 or 800-467-8676

FIELD TICKET & TREATMENT REPORT
CEMENT

DATE	CUSTOMER #	WELL NAME & NUMBER	SECTION	TOWNSHIP	RANGE	COUNTY
6/22/14	4793	Zellner 2-33	33	17	35	Wichita
CUSTOMER Lario Oil + Gas			modob wto rd 22 3/2 N winto			
MAILING ADDRESS			TRUCK #	DRIVER	TRUCK #	DRIVER
CITY			731	Sory		
STATE			693	Jeff		
ZIP CODE			530	Coody		

JOB TYPE Prod 2-stage HOLE SIZE 7 7/8 HOLE DEPTH 5071 CASING SIZE & WEIGHT 5 1/2, 14"
 CASING DEPTH 5071 DRILL PIPE _____ TUBING _____ OTHER DV Tool 2458"
 SLURRY WEIGHT 14", 12" SLURRY VOL _____ WATER gal/sk _____ CEMENT LEFT in CASING Shoe Joint 20'
 DISPLACEMENT 123.24, 59.97 DISPLACEMENT PSI _____ MIX PSI _____ RATE _____

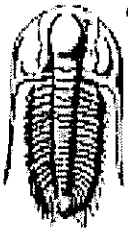
REMARKS: Safety Meeting Rig up on Duke #4 Run Casing + Float Equipment Centralizers -
120" 117" 114" 111" 108" 105" 102" 99" 96" 93" 90" 87" 84" 81" 60" 57" Basket #60
DU Tool # 58 Top of Circulate 1/2 hrs. Pump 5 bbl water mix mud Flush Pump 5 water mix 220
SKS OWC 5" Kolseal washup Pump + Lines Release plug Displace Down with 70 bbl water +
54 1/2 bbl mud Land @ 1500" Lift 800" Drop opening tool open @ 900" Circulate 3 hrs.
Plug Rathole 30 SKS 60/40 8% Gel 1/4" Floseal mix SKS Down Casing Washup Pump
+ Lines Displace Plug Down with 59.97 bbl water Land @ 1400" Lift 600"
Float Did Hold Cement Did Circulate
Approx 50 bbl to Pit

Thanks Danen + Crew

ACCOUNT CODE	QUANTITY or UNITS	DESCRIPTION of SERVICES or PRODUCT	UNIT PRICE	TOTAL
5401 C	1	PUMP CHARGE	\$ 3175.00	\$ 3175.00
5406	40	MILEAGE	\$ 5.25	\$ 210.00
5407 A	27.54	Ton Mileage Delivery	\$ 1.75	\$ 481.95
1126	220 SKS	OWC	\$ 23.70	\$ 5214.00
1110 A	1100"	Kolseal	\$.56	\$ 616.00
1131	400 SKS	60/40 Raz mix	\$ 15.86	\$ 6344.00
1118 B	2752 #	Bentonite	\$.27	\$ 743.04
1107	100 #	Floseal	\$ 2.97	\$ 297.00
1144 G	500 gal	Mud Flush	\$ 1.00	\$ 500.00
4159	1	AFU Float Shoe (w) 5 1/2	\$ 433.75	\$ 433.75
4454	1	5 1/2 Latch Down Plug Assy. (w)	\$ 567.00	\$ 567.00
4130	16	5 1/2 Centralizers (w)	\$ 61.00	\$ 976.00
4104	1	5 1/2 Basket (w)	\$ 290.00	\$ 290.00
4283	1	5 1/2 DV Tool (w) SR # 2019527	\$ 4900.00	\$ 4900.00
		SubTotal		\$ 26193.75
		Less 15%		\$ 3929.02
		SubTotal		\$ 22264.72
		SALES TAX		1446.50
		ESTIMATED TOTAL		23711.22

AUTHORIZATION [Signature] TITLE Asst. Foreman DATE _____

I acknowledge that the payment terms, unless specifically amended in writing on the front of the form or in the customer's account records, at our office, and conditions of service on the back of this form are in effect for services identified on this form.



**TRILOBITE
TESTING, INC**

DRILL STEM TEST REPORT

Lario Oil And Gas Company
301 S Market St
Wichita KS 67202
ATTN: Tim Lauer

33-17s-35w Wichita Co KS

Zellner 2-33

Job Ticket: 57668

DST#: 1

Test Start: 2014.06.17 @ 19:14:23

GENERAL INFORMATION:

Formation: **Lansing L**

Deviated: No Whipstock: ft (KB)

Time Tool Opened: 21:14:08

Time Test Ended: 02:33:08

Test Type: Conventional Bottom Hole (Initial)

Tester: Mike Roberts

Unit No: 65

Interval: 4399.00 ft (KB) To 4412.00 ft (KB) (TVD)

Reference Elevations: 3207.00 ft (KB)

Total Depth: 4412.00 ft (KB) (TVD)

3201.00 ft (CF)

Hole Diameter: 7.88 inches Hole Condition: Fair

KB to GR/CF: 6.00 ft

Serial #: 8846

Inside

Press@RunDepth: 11.72 psig @ 4407.00 ft (KB)

Capacity: 8000.00 psig

Start Date: 2014.06.17

End Date:

2014.06.18

Last Calib.: 2014.06.18

Start Time: 19:14:23

End Time:

02:33:08

Time On Btm: 2014.06.17 @ 21:13:53

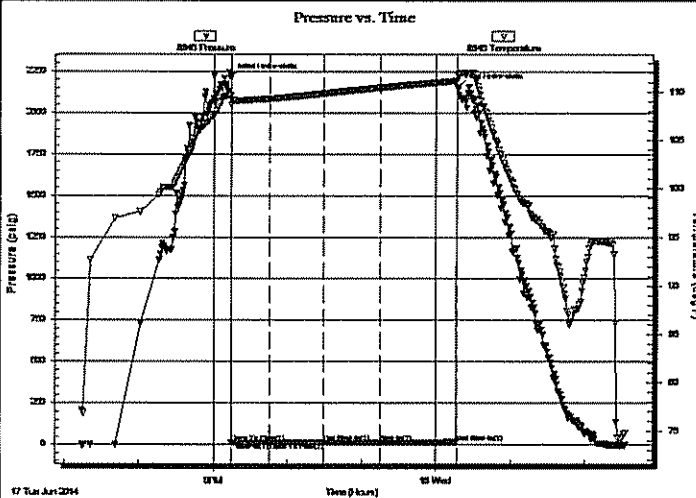
Time Off Btm: 2014.06.18 @ 00:17:08

TEST COMMENT: IF:Weak surface blow died in 2 min.

IS:No return blow

FF:No blow

FS:No return blow



PRESSURE SUMMARY

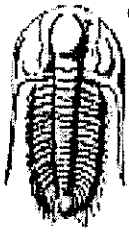
Time (Min.)	Pressure (psig)	Temp (deg F)	Annotation
0	2212.84	109.63	Initial Hydro-static
1	12.92	108.57	Open To Flow (1)
32	12.37	109.30	Shut-In(1)
76	14.11	109.86	End Shut-In(1)
76	12.33	109.86	Open To Flow (2)
121	11.72	110.46	Shut-In(2)
183	15.76	111.17	End Shut-In(2)
184	2152.38	111.76	Final Hydro-static

Recovery

Length (ft)	Description	Volume (bbl)
3.00	mud with oil spots in the tool 100%m	0.04

Gas Rates

	Choke (inches)	Pressure (psig)	Gas Rate (MMcft/d)



**TRILOBITE
TESTING, INC**

DRILL STEM TEST REPORT

FLUID SUMMARY

Lario Oil And Gas Company

33-17s-35w Wichita Co KS

301 S Market St
Wichita KS 67202

Zellner 2-33

Job Ticket: 57668

DST#: 1

ATTN: Tim Lauer

Test Start: 2014.06.17 @ 19:14:23

Mud and Cushion Information

Mud Type: Gel Chem

Cushion Type:

Oil API:

0 deg API

Mud Weight: 9.00 lb/gal

Cushion Length:

ft

Water Salinity:

0 ppm

Viscosity: 54.00 sec/qt

Cushion Volume:

bbbl

Water Loss: 8.77 in³

Gas Cushion Type:

Resistivity: 0.00 ohm.m

Gas Cushion Pressure:

psig

Salinity: 6000.00 ppm

Filter Cake: 1.00 inches

Recovery Information

Recovery Table

Length ft	Description	Volume bbbl
3.00	mud with oil spots in the tool 100% _m	0.042

Total Length: 3.00 ft

Total Volume: 0.042 bbl

Num Fluid Samples: 0

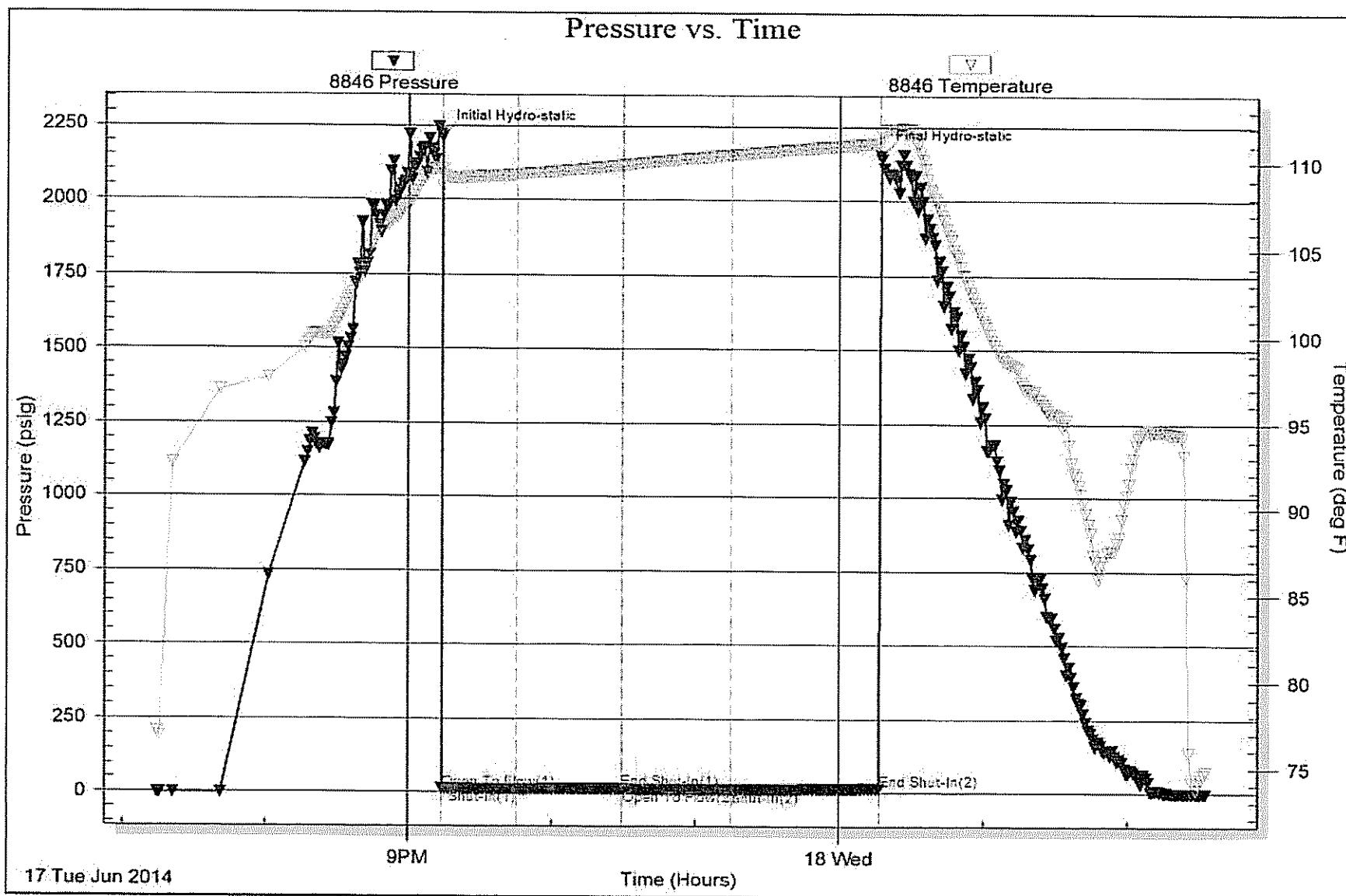
Num Gas Bombs: 0

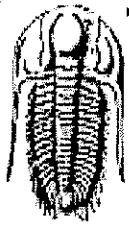
Serial #:

Laboratory Name:

Laboratory Location:

Recovery Comments:





TRILOBITE TESTING, INC

DRILL STEM TEST REPORT

Lario Oil And Gas Company

33-17s-35w Wichita Co KS

301 S Market St
Wichita KS 67202

Zellner 2-33

Job Ticket: 57669

DST#: 2

ATTN: Tim Lauer

Test Start: 2014.06.18 @ 19:55:15

GENERAL INFORMATION:

Formation: **Marmaton A**

Deviated: No Whipstock: ft (KB)

Time Tool Opened: 21:52:15

Time Test Ended: 04:27:15

Test Type: Conventional Bottom Hole (Reset)

Tester: Mike Roberts

Unit No: 65

Interval: 4520.00 ft (KB) To 4542.00 ft (KB) (TVD)

Reference Elevations: 3207.00 ft (KB)

Total Depth: 4542.00 ft (KB) (TVD)

3201.00 ft (CF)

Hole Diameter: 7.88 inches Hole Condition: Fair

KB to GR/CF: 6.00 ft

Serial #: 8846 Inside

Press@RunDepth: 305.51 psig @ 4537.00 ft (KB)

Capacity: 8000.00 psig

Start Date: 2014.06.18

End Date: 2014.06.19

Last Calib.: 2014.06.19

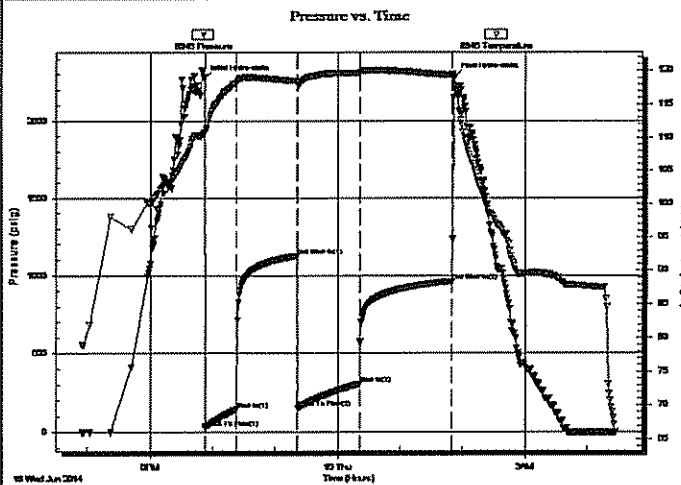
Start Time: 19:55:15

End Time: 04:27:15

Time On Blm: 2014.06.18 @ 21:51:45

Time Off Blm: 2014.06.19 @ 01:52:00

TEST COMMENT: IF:BOB in 4 min.
IS:Built to 6" blow
FF:BOB in 2 min.
FS:Built to 4" blow



PRESSURE SUMMARY

Time (Min.)	Pressure (psig)	Temp (deg F)	Annotation
0	2270.43	110.59	Initial Hydro-static
1	27.91	110.82	Open To Flow (1)
31	143.50	118.11	Shut-in(1)
89	1125.12	118.43	End Shut-in(1)
90	152.23	118.12	Open To Flow (2)
149	305.51	119.63	Shut-in(2)
239	962.46	119.29	End Shut-in(2)
241	2280.82	117.56	Final Hydro-static

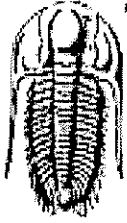
Recovery

Length (ft)	Description	Volume (bbl)
868.00	gco 10%g 90%o	12.18
62.00	gcom 20%g 30%o 50%m	0.87

* Recovery from multiple tests

Gas Rates

	Choke (inches)	Pressure (psig)	Gas Rate (MMcf/d)



**TRILOBITE
TESTING, INC**

DRILL STEM TEST REPORT

FLUID SUMMARY

Lario Oil And Gas Company

33-17s-35w Wichita Co KS

301 S Market St
Wichita KS 67202

Zellner 2-33

Job Ticket: 57669

DST#: 2

ATTN: Tim Lauer

Test Start: 2014.06.18 @ 19:55:15

Mud and Cushion Information

Mud Type: Gel Chem

Cushion Type:

Oil API:

28 deg API

Mud Weight: 9.00 lb/gal

Cushion Length:

ft

Water Salinity:

0 ppm

Viscosity: 57.00 sec/qt

Cushion Volume:

bbl

Water Loss: 9.57 in³

Gas Cushion Type:

Resistivity: 0.00 ohm.m

Gas Cushion Pressure:

psig

Salinity: 2300.00 ppm

Filter Cake: 1.00 inches

Recovery Information

Recovery Table

Length ft	Description	Volume bbl
868.00	gco 10%g 90%o	12.176
62.00	gcom 20%g 30%o 50%m	0.870

Total Length: 930.00 ft Total Volume: 13.046 bbl

Num Fluid Samples: 0

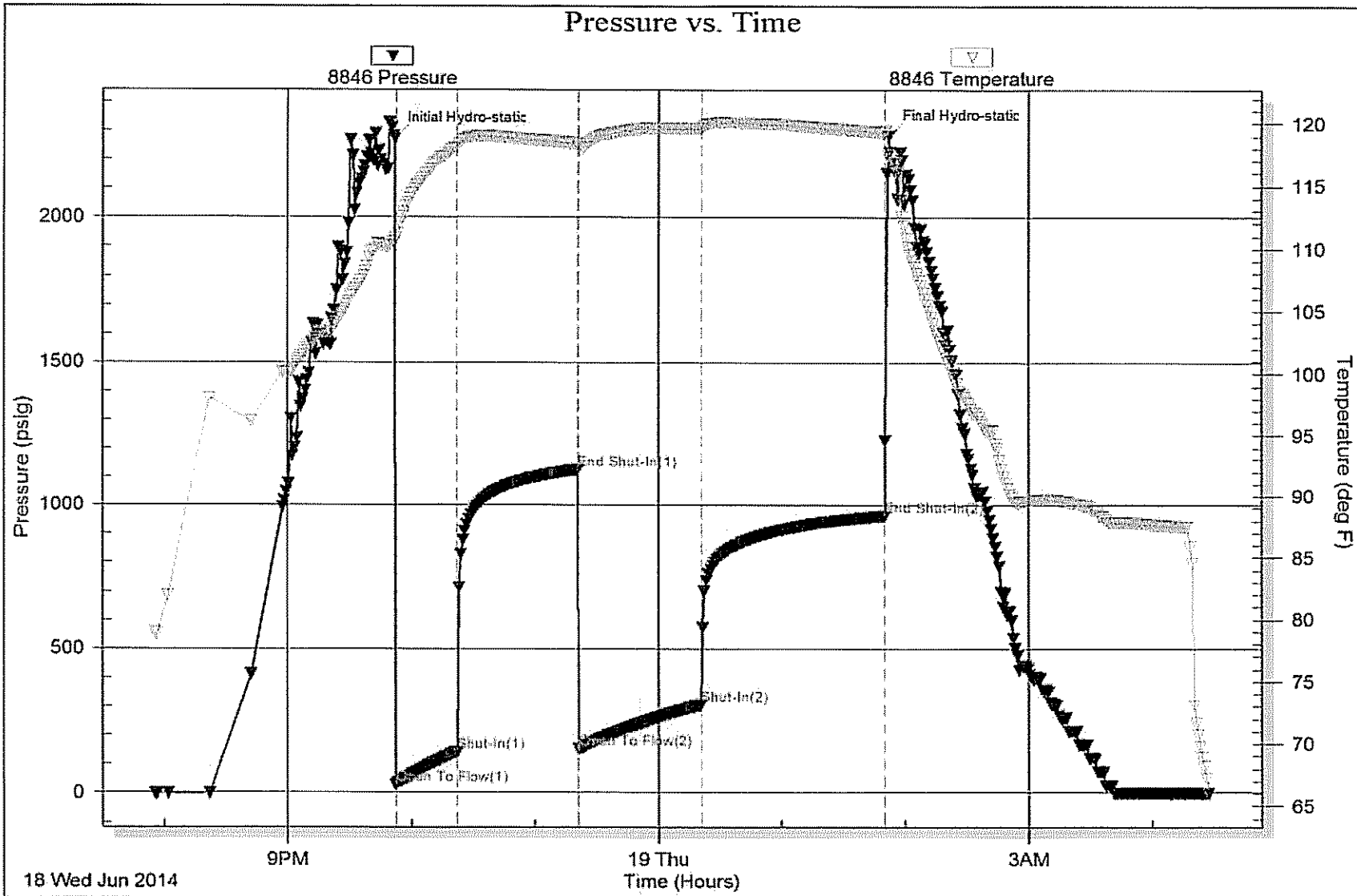
Num Gas Bombs: 0

Serial #:

Laboratory Name:

Laboratory Location:

Recovery Comments: API= 26 @ 80 corrected to 28 @ 60





**TRILOBITE
TESTING, INC.**

DRILL STEM TEST REPORT

FLUID SUMMARY

Lario Oil And Gas Company

33-17s-35w Wichita Co KS

301 S Market St
Wichita KS 67202

Zellner 2-33

Job Ticket: 57670

DST#: 3

ATTN: Tim Lauer

Test Start: 2014.06.19 @ 20:53:15

Mud and Cushion Information

Mud Type: Gel Chem

Cushion Type:

Oil API:

0 deg API

Mud Weight: 10.00 lb/gal

Cushion Length:

ft

Water Salinity:

0 ppm

Viscosity: 60.00 sec/qt

Cushion Volume:

bbbl

Water Loss: 10.37 in³

Gas Cushion Type:

Resistivity: 0.00 ohm.m

Gas Cushion Pressure:

psig

Salinity: 8000.00 ppm

Filter Cake: 1.00 inches

Recovery Information

Recovery Table

Length ft	Description	Volume bbl
5.00	mud with oil on top of tool	0.070

Total Length: 5.00 ft

Total Volume: 0.070 bbl

Num Fluid Samples: 0

Num Gas Bombs: 0

Serial #:

Laboratory Name:

Laboratory Location:

Recovery Comments:

