



CONSOLIDATED
Oil Well Services, LLC

REMIT TO
Consolidated Oil Well Services, LLC
Dept. 970
P.O. Box 4346
Houston, TX 77210-4346

MAIN OFFICE
P.O. Box 884
Chanute, KS 66720
620/431-9210 • 1-800/467-8676
Fax 620/431-0012

INVOICE

Invoice # 269048

Invoice Date: 06/25/2014 Terms: 15/15/30,n/30 Page 1

LARIO OIL & GAS
P.O. BOX 1093
GARDEN CITY KS 67846
(316) 265-5611

GEYER A 1-27
46800
27-19S-35W
06-24-2014
KS

drilling
AFS 14-141

Description	Hours	Unit Price	Total
CEMENT PUMP (SURFACE)	1.00	1150.00	1150.00
EQUIPMENT MILEAGE (ONE WAY)	40.00	5.25	210.00

Part Number	Description	Qty	Unit Price	Total
1104S	CLASS "A" CEMENT (SALE)	240.00	18.5500	4452.00
1102	CALCIUM CHLORIDE (50#)	677.00	.9400	636.38
1118B	PREMIUM GEL / BENTONITE	451.00	.2700	121.77

Sublet Performed	Description	Total
9996-130	CEMENT MATERIAL DISCOUNT	-781.52
9995-130	CEMENT EQUIPMENT DISCOUNT	-322.44

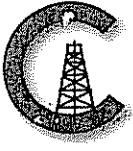
Description	Hours	Unit Price	Total
693 TON MILEAGE DELIVERY	1.00	789.60	789.60

ve
[Signature]
30
[Signature]

Amount Due 7784.38 if paid after 07/25/2014

Parts:	5210.15	Freight:	.00	Tax:	360.94	AR	6616.73
Labor:	.00	Misc:	.00	Total:	6616.73		
Sublt:	-1103.96	Supplies:	.00	Change:	.00		

Signed _____ Date _____



CONSOLIDATED
Oil Well Services, LLC

REMIT TO
FINV
Consolidated Oil Well Services, LLC
Dept. 970
P.O. Box 4346
Houston, TX 77210-4346

MAIN OFFICE
P.O. Box 884
Chanute, KS 66720
620/431-9210 • 1-800/467-8676
Fax 620/431-0012

INVOICE

Invoice # 269316

Invoice Date: 07/17/2014 Terms: 10/10/10,n/30

Page 1

LARIO OIL & GAS
P.O. BOX 1093
GARDEN CITY KS
(316) 265-5611

67846

Acc	Exp	File	DR
JUL 21 2014			

GEYER A 1-27
46601
27-19-35
7-5-14
KS

drilling AFE 14 141
longstanding
7-19-14 LK

Description	Hours	Unit Price	Total
SINGLE PUMP	1.00	3175.00	3175.00
EQUIPMENT MILEAGE (ONE WAY)	40.00	5.25	210.00

Part Number	Description	Qty	Unit Price	Total
1126	OIL WELL CEMENT	330.00	23.7000	7821.00
1110A	KOL SEAL (50# BAG)	1650.00	.5600	924.00
1131	60/40 POZ MIX	450.00	15.8600	7137.00
1118B	PREMIUM GEL / BENTONITE	3096.00	.2700	835.92
1107	FLO-SEAL (25#)	113.00	2.9700	335.61
1144G	MUD FLUSH (SALE)	500.00	1.0000	500.00
4155	FLOAT SHOE 4 1/2" 8 rd	1.00	258.5000	258.50
4453	4 1/2" LATCH DOWN PLUG	1.00	465.0000	465.00
4103	CEMENT BASKET 4 1/2"	1.00	275.0000	275.00
4129	CENTRALIZER 4 1/2"	14.00	48.5000	679.00
4276A	DV TOOL-WEATHERFORD 4 1/2"	1.00	4200.0000	4200.00

Sublet Performed	Description	Total
9995-130	CEMENT EQUIPMENT DISCOUNT	-873.81
9996-130	CEMENT MATERIAL DISCOUNT	-3514.66

Description	Hours	Unit Price	Total
566 TON MILEAGE DELIVERY	1.00	2440.40	2440.40

Amount Due 31166.07 if paid after 07/27/2014

Parts:	23431.03	Freight:	.00	Tax:	1623.20	AR	26491.16
Labor:	.00	Misc:	.00	Total:	26491.16		
Sublt:	-4388.47	Supplies:	.00	Change:	.00		

Signed _____ Date _____



CONSOLIDATED
Oil Well Services, LLC

269318

TICKET NUMBER 46601
LOCATION Oakley, Ks.
FOREMAN Danew

PO Box 884, Chanute, KS 66720
620-431-9210 or 800-467-8676

FIELD TICKET & TREATMENT REPORT
CEMENT

Ks.

DATE	CUSTOMER #	WELL NAME & NUMBER	SECTION	TOWNSHIP	RANGE	COUNTY
7/5/14	4793	Geyer "A" 1-27	27	19	35	Wichita
CUSTOMER			TRUCK #	DRIVER	TRUCK #	DRIVER
Lario Oil + Gas			731	Cory		
MAILING ADDRESS			566	Jake		
CITY			530	Steven		
STATE			529	Lance		
ZIP CODE						

JOB TYPE 2 Stage HOLE SIZE 7 7/8 HOLE DEPTH 5102 CASING SIZE & WEIGHT 4 1/2, 10.5
 CASING DEPTH 5002 DRILL PIPE _____ TUBING _____ OTHER DV Tool 2324'
 SLURRY WEIGHT 14.2, 12.5 SLURRY VOL _____ WATER gal/sk _____ CEMENT LEFT in CASING Shoe Joint 4302
 DISPLACEMENT 78.84, 36.95 DISPLACEMENT PSI _____ MIX PSI _____ RATE _____

REMARKS: Softy Meeting Rig up on Val #1 Run Casing + Float Equipment Cent. 1, 2, 7, 10, 13, 16, 19, 22, 26, 28, 31, 34, 63, 65, Basket #64 DV Tool on #64 Circulate 1/2 hr. Mix mud flush 5 water ahead + Behind it mix 330 SKS OWC 5" Kolseal washup Pump + Liner Release plug Displace Down with 40 bbl water + 38.84 mud. Release opening Tool wait 15 min Open Tool at 900' Circulate 3 hr. Plug mousehole 30 SKS Cement 60/40 8% Gel 1/4" Floseal Plug Rathole 30 SKS mix 400 SKS Down Casing washup Pump + Lines Displace with 36.95 bbl water Cement Did Circulate Float Did Hold
Bottom stage Lift 800' Land 1500' / Top stage Lift 800' Land 2100'
Approx 30 bbls To Pit
Thanks Danew + Crew

ACCOUNT CODE	QUANTITY or UNITS	DESCRIPTION of SERVICES or PRODUCT	UNIT PRICE	TOTAL
5401C	1	PUMP CHARGE	\$ 3175.00	\$ 3175.00
5406	40	MILEAGE	\$ 5.25	\$ 210.00
5407A	34.86	Ton mileage Delivery	\$ 1.75	\$ 2440.40
1126	330 SKS	OWC	\$ 23.70	\$ 7821.00
1110 A	1650 #	Kolseal	\$.56	\$ 924.00
1131	450 SKS	60/40 Poz mix	\$ 15.86	\$ 7137.00
1118 B	3096 #	Bentonite	\$.27	\$ 835.92
1107	113 #	Floseal	\$ 2.97	\$ 335.61
1144 G	500 gal	Mud Flush	\$ 1.00	\$ 500.00
4155	1	4 1/2 AFu Float Shoe (w)	\$ 258.50	\$ 258.50
4453	1	4 1/2 Latch Down Plug Assy (w)	\$ 465.00	\$ 465.00
4103	1	4 1/2 Basket (w)	\$ 275.00	\$ 275.00
4129	14	4 1/2 Centralizers (w)	\$ 48.50	\$ 679.00
4276 A	1	4 1/2 DV Tool (w)	\$ 4200.00	\$ 4200.00
			Sub Total	\$ 29256.42
			Less 15%	\$ 4388.47
			Sub Total	\$ 24867.95
			SALES TAX	1623.20
			ESTIMATED TOTAL	26491.16

Completed

AUTHORIZATION Jim Bullough TITLE J DATE 7-5-14

I acknowledge that the payment terms, unless specifically amended in writing on the front of the form or in the customer's account records, at our office, and conditions of service on the back of this form are in effect for services identified on this form.

TERMS

In consideration of the prices to be charged for Consolidated Oil Well Services, LLC (COWS) services, equipment and products and for the performance of services and supplying of materials, Customer agrees to the following terms and conditions.

Terms. Cash in advance unless satisfactory credit is established. On credit sales, invoices are payable within 30 days of the invoice date. On all invoices not paid within 30 days, Customer agrees to pay COWS interest at the rate of 18% per annum or the maximum rate allowed by law, whichever is higher. In the event COWS retains an attorney to pursue collection of any account, Customer agrees to pay all collection costs and attorney's fees incurred by COWS.

Any applicable federal, state or local sales, use occupation, consumer's or emergency taxes shall be added to the quoted price. All process license fees required to be paid to others will be added to the scheduled prices.

All COWS' prices are subject to change without notice.

SERVICE CONDITIONS

Customer warrants that the well is in proper condition to receive the services, equipment, products and materials to be supplied by COWS. The Customer shall at all time have complete care, custody, and control of the well, the drilling and production equipment at the well, and the premises about the well. A responsible representative of the Customer shall be present to specify depths, pressures, or materials used for any service which is to be performed.

(a) COWS shall not be responsible for any claim, cause of action or demand (hereinafter referred to as a 'claim') for damage to property, or injury to or death of employees and representatives, of Customer or the well owner (if different from Customer), unless such damage, injury or death is caused by the willful misconduct or gross negligence of COWS, including but not limited to sub-surface damage and surface damage arising from sub-surface damage.

(b) Unless a claim is the result of the sole willful misconduct or gross negligence of COWS, Customer shall be responsible for and indemnify and hold COWS harmless from any claim for: (1) reservoir loss or damage, or property damage resulting from sub-surface pressure, losing control of the well and/or a well blowout; (2) damages as a result of a subsurface trespass, or an action in the nature thereof, arising from a service operation performed by COWS; (3) injury to or death of persons, other than employees of COWS, or damage to property (including, but not limited to, injury to the well), or any damages whatsoever, irrespective of cause, growing out of or in any way connected with the use of radioactive material in the well hole; and (4) well damage or reservoir damage caused by (i) loss of circulation, cement invasion, cement misplacement, pumping cement or cement plugs on wells with loss of circulation, including the failure to displace plug to proper depth, (ii) sub-surface pressure and resulting failure to complete pumping of cement or cement plug, including dehydration of cement slurry or flashing, plugged float shoe, annulus bridging or plugging, or (iii) down hole tools being lost or left in the well, or becoming stuck in the well for any reason and by any cause. COWS may furnish down hole tools and may supply supervision for the running and placement of such tools but will not be liable for any damage, loss or result caused by the use of such tools.

Furthermore, Customer will be responsible for the cost to replace such tools if they are lost or left in the well.

(c) COWS makes no guarantee of the effectiveness of any COWS' products, supplies or materials, or the results of any COWS' treatment or services.

(d) Because of the uncertainty of variable well conditions and the necessity of relying on facts and supporting services furnished by others, COWS is unable to guarantee the accuracy of any chart interpretation, research analysis, job recommendation or other data furnished by COWS. COWS' personnel will use their best efforts in gathering such information and their best judgement in interpreting it, but Customer agrees that COWS shall not be responsible for any damage arising from the use of such information except where due to COWS' gross negligence or willful misconduct in the preparation or furnishing of it.

(e) COWS may buy and re-sell to Customer down hole equipment, including but not limited to float equipment, DV tools, port collars, type A & B packers, and Customer agrees that COWS is not an agent or dealer for the companies who manufacture such items, and further agrees that Customer shall be solely responsible for and indemnify COWS against any claim with regard to the effectiveness, malfunction of, or functionality of such items.

WARRANTIES - LIMITATION OF LIABILITY

COWS warrants title to the products, supplies and materials, and that the same are free from defects in workmanship and materials. THERE ARE NO OTHER WARRANTIES, EXPRESS OR IMPLIED, NOR ANY WARRANTY OF MERCHANTABILITY OR FITNESS FOR PURPOSE, WHICH EXTEND BEYOND THOSE STATED IN THE IMMEDIATELY PRECEDING SENTENCE. COWS's liability and Customer's exclusive remedy in any claim (whether in contract, tort, breach of warranty or otherwise,) arising out of the sale or use of any COWS' products, supplies, materials or services is expressly limited to the replacement of such products, supplies, materials or services or their return to COWS or, at COWS' option, an allowance to Customer of credit for the cost of such items.

Customer waives and releases all claims against COWS for any special, incidental, indirect, consequential or punitive damages.

2:00 AM

Consolidated oil well services

Friday, December 02, 2011
8:15 AM

Cement Bid For: LARIO OIL AND GAS

Type of Job: PROD 5 1/2" 1,550' FILL 5100' TD 2,400' DV

Lease: GEYER A#1-27

County: WICHITA

State: KANSAS

Legals- SEC 27-19S-35W

BOTTOM STAGE: ~~240~~ ³³⁰ SKS OWC, 5# KOLSEAL 500 GAL MUD FLUSH

YIELD ~~142~~ @13.8 PPG 600 SKR

TOP STAGE: ~~450~~ SKS 60/40 POZ, 8%GEL, 1/4# FLO SEAL

YIELD : 1.89 @12.5 PPG

4 1/2

Pump truck- 3,175.00

40 MILES - 210.00

TOTAL= 3,385.00

5 1/2 FLOAT EQUIP

1-AFU FLOAT SHOE- 433.75

1- LATCH DOWN ASSY-567.00

16-CENTRALIZERS- 976.00

1-BASKET -290.00

1-DV TOOL -4,800.00

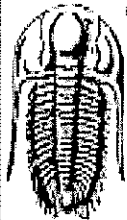
TOTAL= 7,066.75

240 SKS OWC	5,688.00
450 SKS 60/40	7,137.00
3096# GEL	835.92
1,200# KOLSEAL	672.00
113# FLO SEAL	335.61
500 GAL MUD-FLUSH	500.00
30.63 TON MILEAGE	2,144.40
TOTAL	17,312.93

	PUMPTRUCK-3,385.00 MATERIAL - 17,312.93 FLOAT EQUIP- 7,066.75
	SUB TOTAL - 27,764.68 15% DISC - 4,164.70
	TOTAL = 23,599.98

TAX INCLUDED AT INVOICING

BID BY: WALT DINKEL



**TRILOBITE
TESTING, INC**

DRILL STEM TEST REPORT

Lario Oil And Gas Company

27-19s-35w Wichita Co KS

301 S Market St.
Wichita Ks 67202

Geyer A 1-27

Job Ticket: 57672

DST#: 1

ATTN: Ian Bosmeijer

Test Start: 2014.06.29 @ 16:20:15

GENERAL INFORMATION:

Formation: "I"

Deviated: No Whipstock: ft (KB)

Time Tool Opened: 19:04:45

Time Test Ended: 00:37:30

Test Type: Conventional Bottom Hole (Initial)

Tester: Mike Roberts

Unit No: 65

Interval: 4188.00 ft (KB) To 4222.00 ft (KB) (TVD)

Reference Elevations: 3113.00 ft (KB)

Total Depth: 4222.00 ft (KB) (TVD)

3103.00 ft (CF)

Hole Diameter: 7.88 inches Hole Condition: Fair

KB to GR/CF: 10.00 ft

Serial #: 8846 Inside

Press@RunDepth: 187.89 psig @ 4217.00 ft (KB)

Capacity: 8000.00 psig

Start Date: 2014.06.29

End Date:

2014.06.30

Last Calib.: 2014.06.30

Start Time: 16:20:15

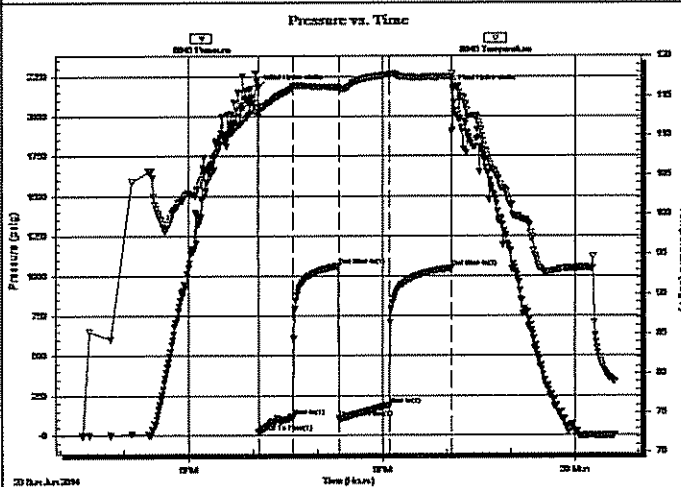
End Time:

00:37:30

Time On Btm: 2014.06.29 @ 19:04:30

Time Off Btm: 2014.06.29 @ 22:05:30

TEST COMMENT: IF:BOB in 28 min
IS:No return blow
FF:BOB in 34 min.
FS:No return blow



PRESSURE SUMMARY

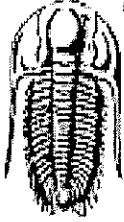
Time (Min.)	Pressure (psig)	Temp (deg F)	Annotation
0	2183.11	113.13	Initial Hydro-static
1	19.56	112.33	Open To Flow (1)
33	117.11	116.06	Shut-in(1)
75	1062.66	116.07	End Shut-in(1)
76	106.25	115.83	Open To Flow (2)
122	187.89	117.69	Shut-in(2)
180	1048.11	117.41	End Shut-in(2)
181	2173.88	116.74	Final Hydro-static

Recovery

Length (ft)	Description	Volume (bbl)
186.00	wcm 5 % w 95%m	2.61
186.00	mcw 30%m 70%w	2.61

Gas Rates

	Choke (inches)	Pressure (psig)	Gas Rate (MMc/d)



**TRILOBITE
TESTING, INC**

DRILL STEM TEST REPORT

FLUID SUMMARY

Lario Oil And Gas Company

27-19s-35w Wichita Co KS

301 S Market St.
Wichita Ks 67202

Geyer A 1-27

Job Ticket: 57672

DST#: 1

ATTN: Ian Bosmeijer

Test Start: 2014.06.29 @ 16:20:15

Mud and Cushion Information

Mud Type: Gel Chem

Cushion Type:

Oil API:

0 deg API

Mud Weight: 9.00 lb/gal

Cushion Length:

ft

Water Salinity:

15000 ppm

Viscosity: 55.00 sec/qt

Cushion Volume:

bbl

Water Loss: 8.78 in³

Gas Cushion Type:

Resistivity: 0.00 ohm.m

Gas Cushion Pressure:

psig

Salinity: 4500.00 ppm

Filter Cake: 1.00 inches

Recovery Information

Recovery Table

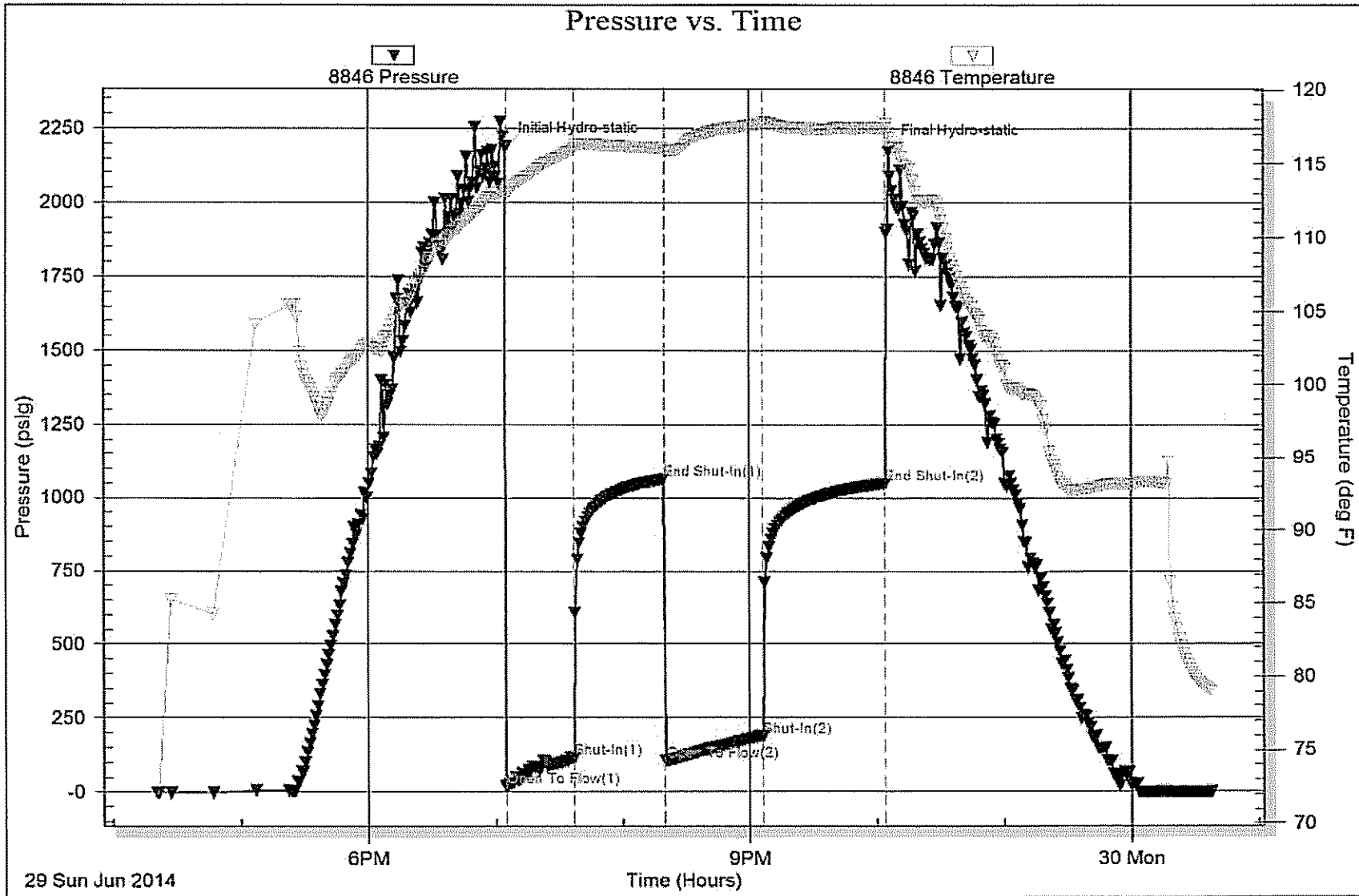
Length ft	Description	Volume bbl
186.00	w cm 5 % w 95% <i>m</i>	2.609
186.00	<i>m</i> cw 30% <i>m</i> 70% <i>w</i>	2.609

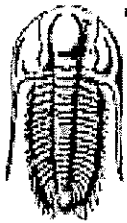
Total Length: 372.00 ft Total Volume: 5.218 bbl

Num Fluid Samples: 0 Num Gas Bombs: 0 Serial #:

Laboratory Name: Laboratory Location:

Recovery Comments: RW= .409 @ 77.9*=15,000 ppm





TRILOBITE TESTING, INC

DRILL STEM TEST REPORT

Lario Oil And Gas Company

27-19s-35w Wichita Co KS

301 S Market St.
Wichita Ks 67202

Geyer A 1-27

Job Ticket: 57673

DST#: 2

ATTN: Ian Bosmeijer

Test Start: 2014.07.01 @ 13:08:15

GENERAL INFORMATION:

Formation: Pawnee

Deviated: No Whipstock: ft (KB)

Time Tool Opened: 14:58:30

Time Test Ended: 20:10:00

Test Type: Conventional Bottom Hole (Reset)

Tester: Mike Roberts

Unit No: 65

Interval: 4524.00 ft (KB) To 4562.00 ft (KB) (TVD)

Reference Elevations: 3113.00 ft (KB)

Total Depth: 4562.00 ft (KB) (TVD)

3103.00 ft (CF)

Hole Diameter: 7.88 inches Hole Condition: Fair

KB to GR/CF: 10.00 ft

Serial #: 8846 Inside

Press@RunDepth: 164.85 psig @ 4557.00 ft (KB)

Capacity: 8000.00 psig

Start Date: 2014.07.01

End Date:

2014.07.01

Last Calib.: 2014.07.01

Start Time: 13:08:15

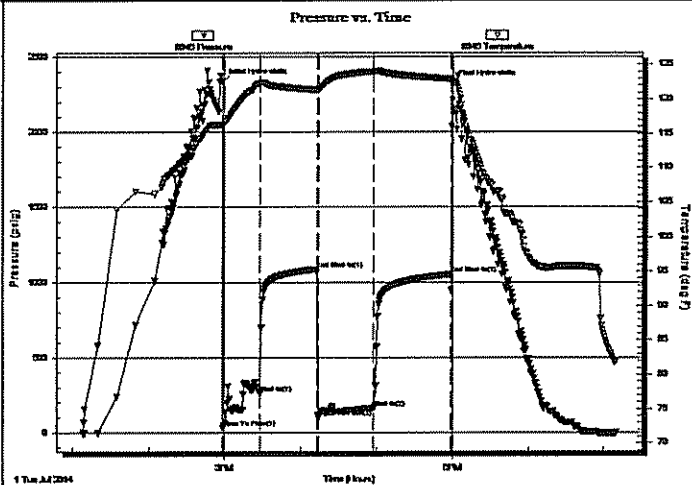
End Time:

20:10:00

Time On Btm: 2014.07.01 @ 14:58:15

Time Off Btm: 2014.07.01 @ 17:59:30

TEST COMMENT: IF:BOB in 28 min.
IS:No return blow
FF:BOB in 33 min.
FS:No return blow



PRESSURE SUMMARY

Time (Min.)	Pressure (psig)	Temp (deg F)	Annotation
0	2335.62	116.26	Initial Hydro-static
1	34.62	115.85	Open To Flow (1)
31	266.39	122.31	Shut-In(1)
75	1090.98	121.37	End Shut-In(1)
76	103.89	121.38	Open To Flow (2)
120	164.85	124.00	Shut-In(2)
180	1055.57	122.91	End Shut-In(2)
182	2321.06	122.69	Final Hydro-static

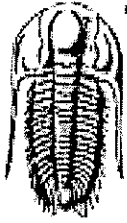
Recovery

Length (ft)	Description	Volume (bbl)
92.00	gcow m 5%g 10% w 15%O 70%m	1.29
92.00	ocgrmw 10%o 20%g 30%m 40%w	1.29
124.00	mcogw 10%m 15%O 25%g 50%m	1.74

* Recovery from multiple tests

Gas Rates

	Choke (Inches)	Pressure (psig)	Gas Rate (MMcf/d)



**TRILOBITE
TESTING, INC**

DRILL STEM TEST REPORT

FLUID SUMMARY

Lario Oil And Gas Company

27-19s-35w Wichita Co KS

301 S Market St.
Wichita Ks 67202

Geyer A 1-27

Job Ticket: 57673

DST#: 2

ATTN: Ian Bosmeijer

Test Start: 2014.07.01 @ 13:08:15

Mud and Cushion Information

Mud Type: Gel Chem

Cushion Type:

Oil API:

0 deg API

Mud Weight: 9.00 lb/gal

Cushion Length:

ft

Water Salinity:

16000 ppm

Viscosity: 65.00 sec/qt

Cushion Volume:

bbl

Water Loss: 8.78 in³

Gas Cushion Type:

Resistivity: 0.00 ohm.m

Gas Cushion Pressure:

psig

Salinity: 6400.00 ppm

Filter Cake: 1.00 inches

Recovery Information

Recovery Table

Length ft	Description	Volume bbl
92.00	gcow m 5%g 10% w 15%O 70%m	1.291
92.00	ocgmw 10%o 20%g 30%m 40%w	1.291
124.00	mcogw 10%m 15%O 25%g 50%m	1.739

Total Length: 308.00 ft Total Volume: 4.321 bbl

Num Fluid Samples: 0

Num Gas Bombs: 0

Serial #:

Laboratory Name:

Laboratory Location:

Recovery Comments: RW= .416@ 78.2 = 16,000 ppm

