



DRILL STEM TEST REPORT

Prepared For: **FG Holl Company LLC**

9431 East Central
Suite 100
Wichita, Kansas 67206+2563

ATTN: Renee Husted

Stoss # 1-35

35/17S/15W/Barton

Start Date: 2014.05.14 @ 08:58:00

End Date: 2014.05.14 @ 12:59:30

Job Ticket #: 18261 DST #: 3

Superior Testers Enterprises LLC
PO Box 138 Great Bend KS 67530
1-800-792-6902

Printed: 2014.05.14 @ 13:07:43



DRILL STEM TEST REPORT

FG Holl Company LLC
 9431 East Central
 Suite 100
 Wichita, Kansas 67206+2563
 ATTN: Renee Husted

35/17S/15W/Barton

Stoss # 1-35

Job Ticket: 18261

DST#: 3

Test Start: 2014.05.14 @ 08:58:00

GENERAL INFORMATION:

Formation: **Lansing/Kansas City**

Deviated: No Whipstock: ft (KB)

Time Tool Opened: 10:11:30

Time Test Ended: 12:59:30

Test Type: Conventional Bottom Hole (Initial)

Tester: Ken Swinney

Unit No: 3325 Great Bend/42

Interval: 3406.00 ft (KB) To 3430.00 ft (KB) (TVD)

Reference Elevations: 1999.00 ft (KB)

Total Depth: 3430.00 ft (KB) (TVD)

1991.00 ft (CF)

Hole Diameter: 7.80 inches Hole Condition: Fair

KB to GR/CF: 8.00 ft

Serial #: 6749

Inside

Press@RunDepth: 43.91 psig @ 3426.00 ft (KB)

Capacity: 5000.00 psig

Start Date: 2014.05.14

End Date: 2014.05.14

Last Calib.: 2014.05.14

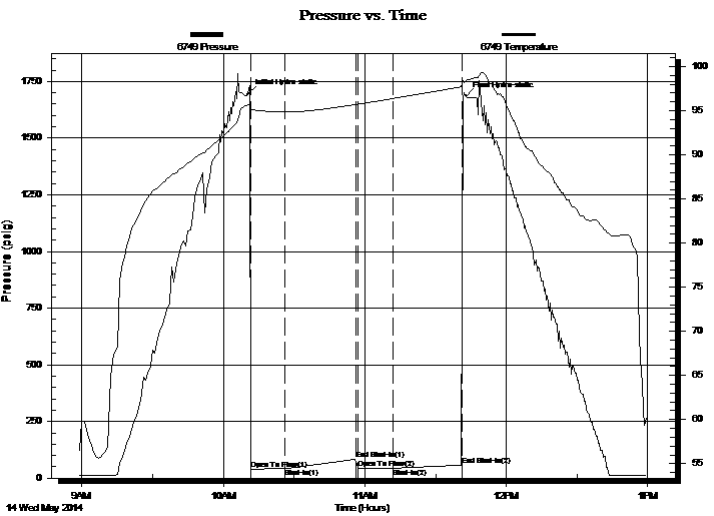
Start Time: 08:58:00

End Time: 12:59:30

Time On Btm: 2014.05.14 @ 10:10:30

Time Off Btm: 2014.05.14 @ 11:43:00

TEST COMMENT: 1ST Open 15 Minutes/Weak blow/Blow built to 3/4 inch
 1ST Shut In 30 Minutes/No blow back
 2ND Open 15 Minutes/Weak surface blow/Blow did not build/Blow died in 10 minutes
 2ND Shut In 30 Minutes/No blow back



PRESSURE SUMMARY

Time (Min.)	Pressure (psig)	Temp (deg F)	Annotation
0	1695.33	95.65	Initial Hydro-static
1	39.90	95.10	Open To Flow (1)
16	41.97	94.86	Shut-In(1)
46	83.99	95.71	End Shut-In(1)
47	42.38	95.75	Open To Flow (2)
62	43.91	96.40	Shut-In(2)
91	57.29	97.71	End Shut-In(2)
93	1684.96	98.42	Final Hydro-static

Recovery

Length (ft)	Description	Volume (bbl)
10.00	Mud w with show of oil in tool/Mud 100%	0.14

Gas Rates

Choke (inches)	Pressure (psig)	Gas Rate (Mcf/d)



DRILL STEM TEST REPORT

FG Holl Company LLC
 9431 East Central
 Suite 100
 Wichita, Kansas 67206+2563
 ATTN: Renee Husted

35/17S/15W/Barton

Stoss # 1-35

Job Ticket: 18261

DST#: 3

Test Start: 2014.05.14 @ 08:58:00

GENERAL INFORMATION:

Formation: **Lansing/Kansas City**

Deviated: No Whipstock: ft (KB)

Time Tool Opened: 10:11:30

Time Test Ended: 12:59:30

Test Type: Conventional Bottom Hole (Initial)

Tester: Ken Swinney

Unit No: 3325 Great Bend/42

Interval: 3406.00 ft (KB) To 3430.00 ft (KB) (TVD)

Reference Elevations: 1999.00 ft (KB)

Total Depth: 3430.00 ft (KB) (TVD)

1991.00 ft (CF)

Hole Diameter: 7.80 inches Hole Condition: Fair

KB to GR/CF: 8.00 ft

Serial #: 8938 Outside

Press@RunDepth: 56.86 psig @ 3427.00 ft (KB)

Capacity: 5000.00 psig

Start Date: 2014.05.14

End Date: 2014.05.14

Last Calib.: 2014.05.14

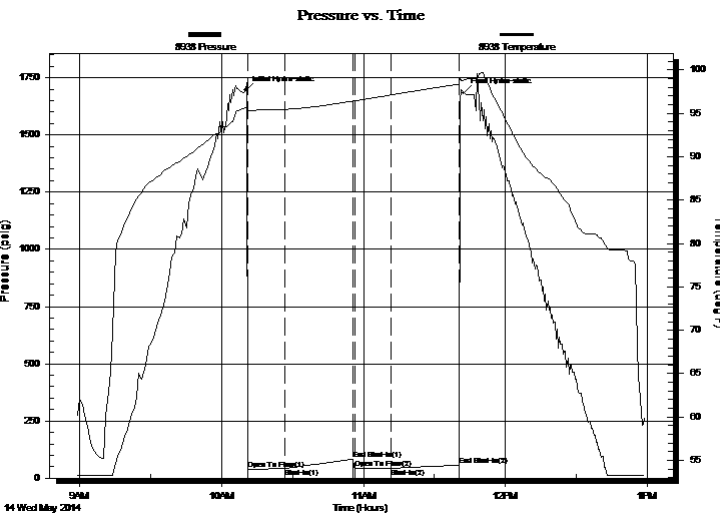
Start Time: 08:58:00

End Time: 12:59:00

Time On Btm: 2014.05.14 @ 10:10:00

Time Off Btm: 2014.05.14 @ 11:42:30

TEST COMMENT: 1ST Open 15 Minutes/Weak blow/Blow built to 3/4 inch
 1ST Shut In 30 Minutes/No blow back
 2ND Open 15 Minutes/Weak surface blow/Blow did not build/Blow died in 10 minutes
 2ND Shut In 30 Minutes/No blow back



PRESSURE SUMMARY

Time (Min.)	Pressure (psig)	Temp (deg F)	Annotation
0	1694.40	95.61	Initial Hydro-static
1	38.98	95.27	Open To Flow (1)
17	41.86	95.45	Shut-In(1)
46	83.26	96.43	End Shut-In(1)
47	41.46	96.46	Open To Flow (2)
62	42.85	97.12	Shut-In(2)
91	56.86	98.39	End Shut-In(2)
93	1683.93	98.87	Final Hydro-static

Recovery

Length (ft)	Description	Volume (bbl)
10.00	Mud w with show of oil in tool/Mud 100%	0.14

Gas Rates

Choke (inches)	Pressure (psig)	Gas Rate (Mcf/d)



DRILL STEM TEST REPORT

TOOL DIAGRAM

FG Holl Company LLC

35/17S/15W/Barton

9431 East Central
Suite 100
Wichita, Kansas 67206+2563
ATTN: Renee Husted

Stoss # 1-35

Job Ticket: 18261

DST#: 3

Test Start: 2014.05.14 @ 08:58:00

Tool Information

Drill Pipe:	Length: 3405.00 ft	Diameter: 3.80 inches	Volume: 47.76 bbl	Tool Weight: 2000.00 lb
Heavy Wt. Pipe:	Length: 0.00 ft	Diameter: 0.00 inches	Volume: 0.00 bbl	Weight set on Packer: 20000.00 lb
Drill Collar:	Length: 0.00 ft	Diameter: 0.00 inches	Volume: 0.00 bbl	Weight to Pull Loose: 65000.00 lb
			<u>Total Volume: 47.76 bbl</u>	Tool Chased 0.00 ft
Drill Pipe Above KB:	26.00 ft			String Weight: Initial 50000.00 lb
Depth to Top Packer:	3406.00 ft			Final 50000.00 lb
Depth to Bottom Packer:	ft			
Interval between Packers:	24.00 ft			
Tool Length:	51.00 ft			
Number of Packers:	2	Diameter: 6.75 inches		

Tool Comments:

Tool Description	Length (ft)	Serial No.	Position	Depth (ft)	Accum. Lengths
------------------	-------------	------------	----------	------------	----------------

Shut-In Tool	5.00			3384.00	
Hydraulic tool	5.00			3389.00	
Jars	5.00			3394.00	
Safety Joint	2.00			3396.00	
Top Packer	5.00			3401.00	
Packer	5.00			3406.00	27.00 Bottom Of Top Packer
Anchor	19.00			3425.00	
Recorder	1.00	6749	Inside	3426.00	
Recorder	1.00	8938	Outside	3427.00	
Bullnose	3.00			3430.00	24.00 Anchor Tool
Total Tool Length:	51.00				



DRILL STEM TEST REPORT

FLUID SUMMARY

FG Holl Company LLC

35/17S/15W/Barton

9431 East Central
Suite 100
Wichita, Kansas 67206+2563
ATTN: Renee Husted

Stoss # 1-35

Job Ticket: 18261

DST#: 3

Test Start: 2014.05.14 @ 08:58:00

Mud and Cushion Information

Mud Type: Gel Chem
Mud Weight: 59.00 lb/gal
Viscosity: 50.00 sec/qt
Water Loss: 8.80 in³
Resistivity: ohm.m
Salinity: 5100.00 ppm
Filter Cake: 1.00 inches

Cushion Type:
Cushion Length: ft
Cushion Volume: bbl
Gas Cushion Type:
Gas Cushion Pressure: psig

Oil API: deg API
Water Salinity: ppm

Recovery Information

Recovery Table

Length ft	Description	Volume bbl
10.00	Mud with show of oil in tool/Mud 100%	0.140

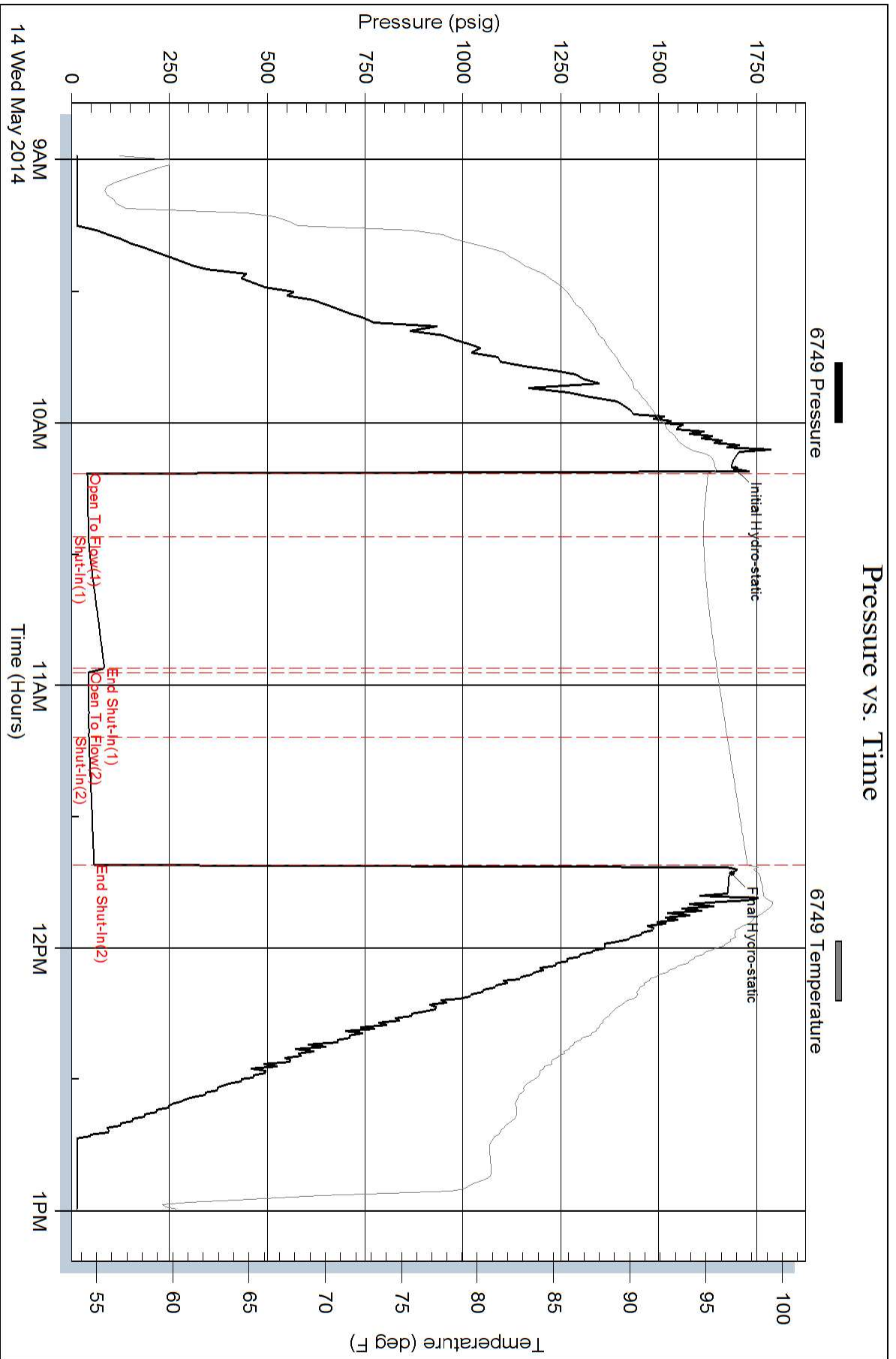
Total Length: 10.00 ft Total Volume: 0.140 bbl

Num Fluid Samples: 0 Num Gas Bombs: 0 Serial #:

Laboratory Name: Laboratory Location:

Recovery Comments:

Pressure vs. Time



Pressure vs. Time

