



## DRILL STEM TEST REPORT

Prepared For: **FG Holl Company LLC**

9431 East Central  
Suite 100  
Wichita, Kansas 67206+2563

ATTN: Renee Husted

**Stoss # 1-35**

**35/17S/15W/Barton**

Start Date: 2014.05.15 @ 21:05:00

End Date: 2014.05.16 @ 01:33:30

Job Ticket #: 18264                      DST #: 6

Superior Testers Enterprises LLC  
PO Box 138 Great Bend KS 67530  
1-800-792-6902

Printed: 2014.05.16 @ 01:44:49



# DRILL STEM TEST REPORT

FG Holl Company LLC  
 9431 East Central  
 Suite 100  
 Wichita, Kansas 67206+2563  
 ATTN: Renee Husted

**35/17S/15W/Barton**

**Stoss # 1-35**

Job Ticket: 18264

**DST#: 6**

Test Start: 2014.05.15 @ 21:05:00

## GENERAL INFORMATION:

Formation: **Lansing/Kansas City**

Deviated: No Whipstock: ft (KB)

Time Tool Opened: 22:35:30

Time Test Ended: 01:33:30

Test Type: Conventional Bottom Hole (Initial)

Tester: Ken Swinney

Unit No: 3325 Great Bend/42

**Interval: 3468.00 ft (KB) To 3488.00 ft (KB) (TVD)**

Reference Elevations: 1999.00 ft (KB)

Total Depth: 3488.00 ft (KB) (TVD)

1991.00 ft (CF)

Hole Diameter: 7.80 inches Hole Condition: Fair

KB to GR/CF: 8.00 ft

**Serial #: 6749**

**Inside**

Press@RunDepth: 37.44 psig @ 3484.00 ft (KB)

Capacity: 5000.00 psig

Start Date: 2014.05.15

End Date:

2014.05.16

Last Calib.:

2014.05.16

Start Time:

21:05:00

End Time:

01:33:30

Time On Btm:

2014.05.15 @ 22:34:30

Time Off Btm:

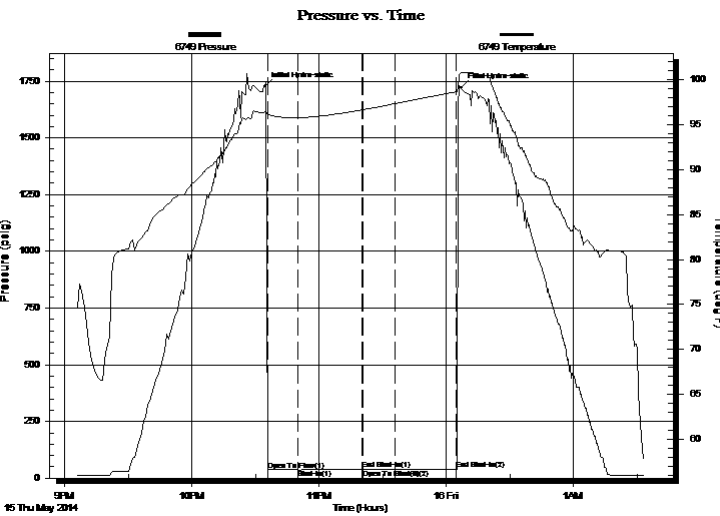
2014.05.16 @ 00:07:00

**TEST COMMENT:** 1ST Open 15 Minutes/Weak surface blow/Blow died in 10 minutes

1ST Shut In 30 Minutes/No blow back

2ND Open 15 Minutes/Dead no blow

2ND Shut In 30 Minutes/No blow back



## PRESSURE SUMMARY

Time (Min.)	Pressure (psig)	Temp (deg F)	Annotation
0	1726.62	96.43	Initial Hydro-static
1	36.57	96.12	Open To Flow (1)
16	37.29	95.78	Shut-In(1)
46	39.28	96.65	End Shut-In(1)
46	37.12	96.67	Open To Flow (2)
61	37.44	97.34	Shut-In(2)
90	38.47	98.67	End Shut-In(2)
93	1719.58	100.76	Final Hydro-static

## Recovery

Length (ft)	Description	Volume (bbl)
0.00	Mud in tool with show of oil/Mud 100%	0.00

## Gas Rates

Choke (inches)	Pressure (psig)	Gas Rate (Mcf/d)





# DRILL STEM TEST REPORT

TOOL DIAGRAM

FG Holl Company LLC

35/17S/15W/Barton

9431 East Central  
Suite 100  
Wichita, Kansas 67206+2563  
ATTN: Renee Husted

Stoss # 1-35

Job Ticket: 18264

DST#: 6

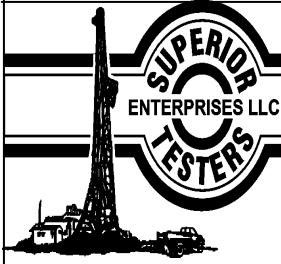
Test Start: 2014.05.15 @ 21:05:00

## Tool Information

Drill Pipe:	Length: 3469.00 ft	Diameter: 3.80 inches	Volume: 48.66 bbl	Tool Weight: 2000.00 lb
Heavy Wt. Pipe:	Length: 0.00 ft	Diameter: 0.00 inches	Volume: 0.00 bbl	Weight set on Packer: 20000.00 lb
Drill Collar:	Length: 0.00 ft	Diameter: 0.00 inches	Volume: 0.00 bbl	Weight to Pull Loose: 68000.00 lb
			<u>Total Volume: 48.66 bbl</u>	Tool Chased 0.00 ft
Drill Pipe Above KB:	28.00 ft			String Weight: Initial 50000.00 lb
Depth to Top Packer:	3468.00 ft			Final 50000.00 lb
Depth to Bottom Packer:	ft			
Interval between Packers:	20.00 ft			
Tool Length:	47.00 ft			
Number of Packers:	2	Diameter: 6.75 inches		

Tool Comments:

Tool Description	Length (ft)	Serial No.	Position	Depth (ft)	Accum. Lengths
Shut-In Tool	5.00			3446.00	
Hydraulic tool	5.00			3451.00	
Jars	5.00			3456.00	
Safety Joint	2.00			3458.00	
Top Packer	5.00			3463.00	
Packer	5.00			3468.00	27.00 Bottom Of Top Packer
Anchor	15.00			3483.00	
Recorder	1.00	6749	Inside	3484.00	
Recorder	1.00	8938	Outside	3485.00	
Bullnose	3.00			3488.00	20.00 Anchor Tool
<b>Total Tool Length:</b>	<b>47.00</b>				



# DRILL STEM TEST REPORT

**FLUID SUMMARY**

FG Holl Company LLC

**35/17S/15W/Barton**

9431 East Central  
Suite 100  
Wichita, Kansas 67206+2563  
ATTN: Renee Husted

**Stoss # 1-35**

Job Ticket: 18264

**DST#: 6**

Test Start: 2014.05.15 @ 21:05:00

## Mud and Cushion Information

Mud Type: Gel Chem  
Mud Weight: 9.00 lb/gal  
Viscosity: 56.00 sec/qt  
Water Loss: 7.20 in<sup>3</sup>  
Resistivity: ohm.m  
Salinity: 5600.00 ppm  
Filter Cake: 1.00 inches

Cushion Type:  
Cushion Length: ft  
Cushion Volume: bbl  
Gas Cushion Type:  
Gas Cushion Pressure: psig

Oil API: deg API  
Water Salinity: ppm

## Recovery Information

Recovery Table

Length ft	Description	Volume bbl
0.00	Mud in tool with show of oil/Mud 100%	0.000

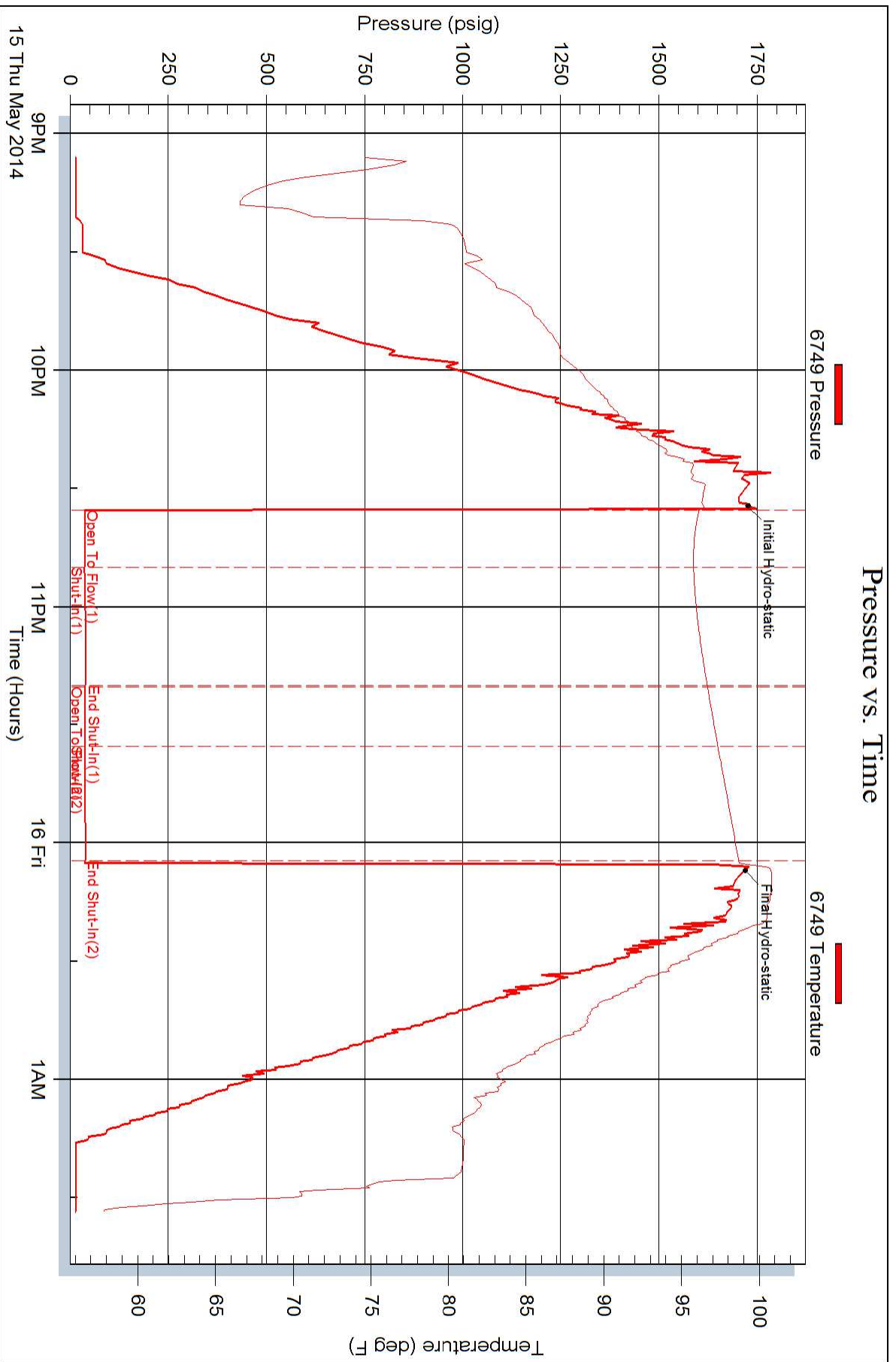
Total Length: ft Total Volume: bbl

Num Fluid Samples: 0 Num Gas Bombs: 0 Serial #:

Laboratory Name: Laboratory Location:

Recovery Comments:

### Pressure vs. Time



### Pressure vs. Time

