



TEMPORARY ABANDONMENT WELL APPLICATION

OPERATOR: License# _____
 Name: _____
 Address 1: _____
 Address 2: _____
 City: _____ State: _____ Zip: _____ + _____
 Contact Person: _____
 Phone: (_____) _____
 Contact Person Email: _____
 Field Contact Person: _____
 Field Contact Person Phone: (_____) _____

API No. 15- _____
 Spot Description: _____
 _____ - _____ - _____ - _____ Sec. _____ Twp. _____ S. R. _____ E W
 _____ feet from N / S Line of Section
 _____ feet from E / W Line of Section
 GPS Location: Lat: _____, Long: _____
(e.g. xx.xxxxx) (e.g. -xxx.xxxxx)
 Datum: NAD27 NAD83 WGS84
 County: _____ Elevation: _____ GL KB
 Lease Name: _____ Well #: _____
 Well Type: (check one) Oil Gas OG WSW Other: _____
 SWD Permit #: _____ ENHR Permit #: _____
 Gas Storage Permit #: _____
 Spud Date: _____ Date Shut-In: _____

	Conductor	Surface	Production	Intermediate	Liner	Tubing
Size						
Setting Depth						
Amount of Cement						
Top of Cement						
Bottom of Cement						

Casing Fluid Level from Surface: _____ How Determined? _____ Date: _____

Casing Squeeze(s): _____ to _____ w / _____ sacks of cement, _____ to _____ w / _____ sacks of cement. Date: _____
(top) (bottom) (top) (bottom)

Do you have a valid Oil & Gas Lease? Yes No

Depth and Type: Junk in Hole at _____ Tools in Hole at _____ Casing Leaks: Yes No Depth of casing leak(s): _____
(depth) (depth)

Type Completion: ALT. I ALT. II Depth of: DV Tool: _____ w / _____ sacks of cement Port Collar: _____ w / _____ sack of cement
(depth) (depth)

Packer Type: _____ Size: _____ Inch Set at: _____ Feet

Total Depth: _____ Plug Back Depth: _____ Plug Back Method: _____

Geological Data:

Formation Name	Formation Top	Formation Base	Completion Information
1. _____	At: _____	to _____ Feet	Perforation Interval _____ to _____ Feet or Open Hole Interval _____ to _____ Feet
2. _____	At: _____	to _____ Feet	Perforation Interval _____ to _____ Feet or Open Hole Interval _____ to _____ Feet

~~UNDER PENALTY OF PERJURY I HEREBY ATTEST THAT THE INFORMATION CONTAINED HEREIN IS TRUE AND CORRECT TO THE BEST OF MY KNOWLEDGE~~

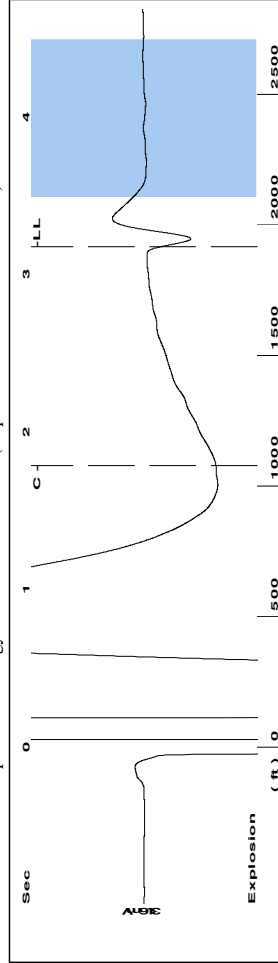
Submitted Electronically

Do NOT Write in This Space - KCC USE ONLY	Date Tested: _____	Results: _____	Date Plugged: _____	Date Repaired: _____	Date Put Back in Service: _____
	Review Completed by: _____ Comments: _____				
TA Approved: <input type="checkbox"/> Yes <input type="checkbox"/> Denied Date: _____					

Mail to the Appropriate KCC Conservation Office:

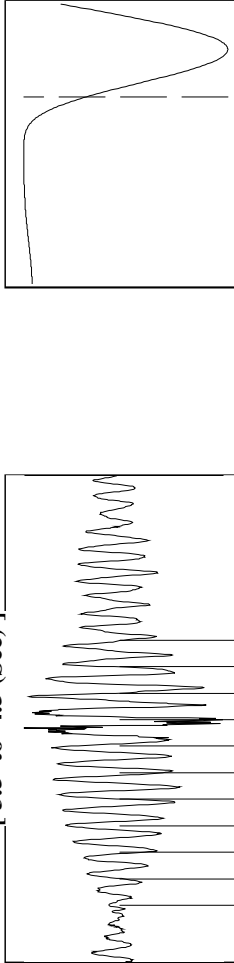
	KCC District Office #1 - 210 E. Frontview, Suite A, Dodge City, KS 67801	Phone 620.225.8888
	KCC District Office #2 / UPGS - 3450 N. Rock Road, Building 600, Suite 601, Wichita, KS 67226	Phone 316.630.4000
	KCC District Office #3 - 1500 SW Seventh Steet, Chanute, KS 66720	Phone 620.432.2300
	KCC District Office #4 - 2301 E. 13th Street, Hays, KS 67601-2651	Phone 785.625.0550

Group: Devon Energy Well: Doebbel 2-9 (acquired on: 07/11/14 09:40:22)



Filter Type High Pass Automatic Collar Count Yes Time 3.177 sec
 Manual Acoustic Velocity 163.3 ft/s Manual JTS/sec 18.3486
 Joints 60.4547 Jts
 Depth 1916.41 ft

[3.5 to 4.5 (Sec)]

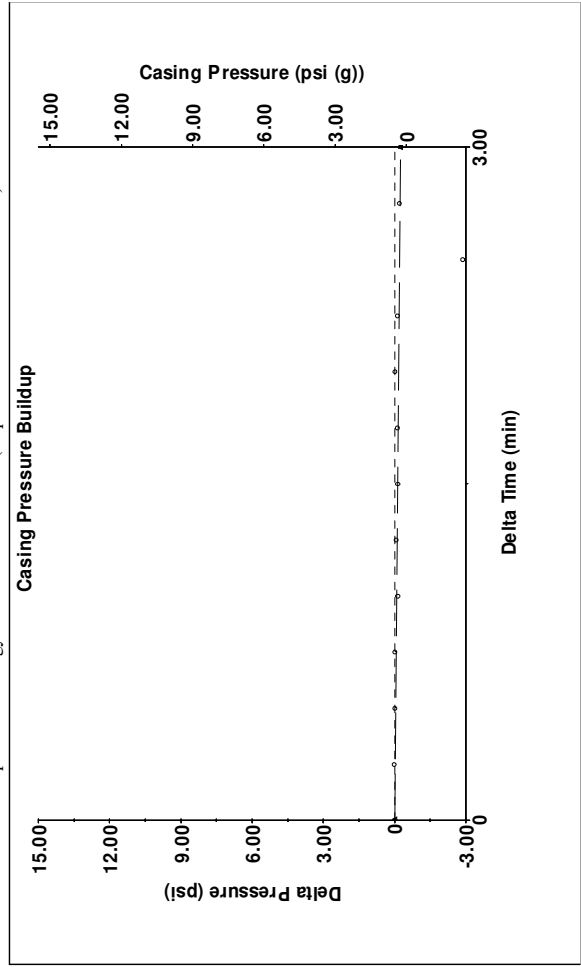


Analysis Method: Manual

Group: Devon Energy Well: Doebbel 2-9 (acquired on: 07/11/14 09:40:22)

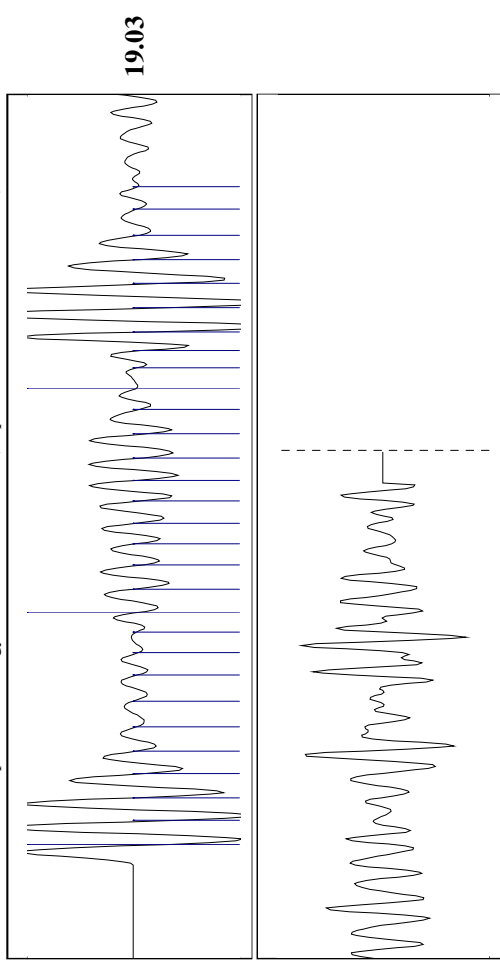
Production	Potential	Casing Pressure	0.5 psi (g)
Oil - -	BBL/D	Casing Pressure Buildup	-0.155 psi
Water - -	BBL/D	Gas Flow	0 Mscf/D
Gas - -	Mscf/D	% Liquid	100 %
IPR Method	Vogel	Gas/Liquid Interface Pressure	1.3 psi (g)
PBHP/SBHP	- -	Liquid Level Depth	1916.41 ft
Production Efficiency	0.0	Pump Intake Depth	- - ft
Oil 40 deg-API		Formation Depth	11500.00 ft
Water 1.05 Sp.Gr.H2O			
Gas 0.77 Sp.Gr.AIR			
Acoustic Velocity	1206.43 ft/s		
Formation Submergence			
Total Gaseous Liquid Column HT (TVD)	9584 ft		
Equivalent Gas Free Liquid HT (TVD)	9584 ft		
Acoustic Test			

Group: Devon Energy Well: Doebbel 2-9 (acquired on: 07/11/14 09:40:22)



Change in Pressure -0.26 psi PT14936 Range
 Change in Time 3.00 min

Group: Devon Energy Well: Doebbel 2-9 (acquired on: 07/11/14 09:40:22)



Acoustic Velocity 1206.43 ft/s Joints counted 29
 Joints Per Second 19.0289 jts/sec Joints to liquid level 60.4547
 Depth to liquid level 1916.41 ft Filter Width 20.3486
 Automatic Collar Count Yes Time to 1st Collar 0.264 1.788

Conservation Division
District Office No. 1
210 E. Frontview, Suite A
Dodge City, KS 67801



Phone: 620-225-8888
Fax: 620-225-8885
<http://kcc.ks.gov/>

Shari Feist Albrecht, Chair
Jay Scott Emler, Commissioner
Pat Apple, Commissioner

Sam Brownback, Governor

July 16, 2014

Aletha Dewbre
Devon Energy Production Company, L.P.
333 W SHERIDAN AVE
OKLAHOMA CITY, OK 73102-5015

Re: Temporary Abandonment
API 15-093-20442-00-00
DOEBBELING 2-9
SE/4 Sec.09-23S-36W
Kearny County, Kansas

Dear Aletha Dewbre:

"Your temporary abandonment (TA) application for the well listed above has been approved. In accordance with K.A.R. 82-3-111 the TA status of this well will expire 07/16/2015.

- * If you return this well to service or plug it, please notify the District Office.
- * If you sell this well you are required to file a Transfer of Operator form, T-1.
- * If the well will remain temporarily abandoned, you must submit a new TA application, CP-111, before 07/16/2015.

You may contact me at the number above if you have questions.

Very truly yours,

Michael Maier"