



TEMPORARY ABANDONMENT WELL APPLICATION

All blanks must be complete

OPERATOR: License# \_\_\_\_\_  
Name: \_\_\_\_\_  
Address 1: \_\_\_\_\_  
Address 2: \_\_\_\_\_  
City: \_\_\_\_\_ State: \_\_\_\_\_ Zip: \_\_\_\_\_ + \_\_\_\_\_  
Contact Person: \_\_\_\_\_  
Phone: ( \_\_\_\_\_ ) \_\_\_\_\_  
Contact Person Email: \_\_\_\_\_  
Field Contact Person: \_\_\_\_\_  
Field Contact Person Phone: ( \_\_\_\_\_ ) \_\_\_\_\_

API No. 15- \_\_\_\_\_  
Spot Description: \_\_\_\_\_  
\_\_\_\_ - \_\_\_\_ - \_\_\_\_ - \_\_\_\_ Sec. \_\_\_\_\_ Twp. \_\_\_\_\_ S. R. \_\_\_\_\_  E  W  
\_\_\_\_\_ feet from  N /  S Line of Section  
\_\_\_\_\_ feet from  E /  W Line of Section  
GPS Location: Lat: \_\_\_\_\_, Long: \_\_\_\_\_  
(e.g. xx.xxxxx) (e.g. -xxx.xxxxx)  
Datum:  NAD27  NAD83  WGS84  
County: \_\_\_\_\_ Elevation: \_\_\_\_\_  GL  KB  
Lease Name: \_\_\_\_\_ Well #: \_\_\_\_\_  
Well Type: (check one)  Oil  Gas  OG  WSW  Other: \_\_\_\_\_  
 SWD Permit #: \_\_\_\_\_  ENHR Permit #: \_\_\_\_\_  
 Gas Storage Permit #: \_\_\_\_\_  
Spud Date: \_\_\_\_\_ Date Shut-In: \_\_\_\_\_

	Conductor	Surface	Production	Intermediate	Liner	Tubing
Size						
Setting Depth						
Amount of Cement						
Top of Cement						
Bottom of Cement						

Casing Fluid Level from Surface: \_\_\_\_\_ How Determined? \_\_\_\_\_ Date: \_\_\_\_\_  
Casing Squeeze(s): \_\_\_\_\_ to \_\_\_\_\_ w / \_\_\_\_\_ sacks of cement, \_\_\_\_\_ to \_\_\_\_\_ w / \_\_\_\_\_ sacks of cement. Date: \_\_\_\_\_  
(top) (bottom) (top) (bottom)  
Do you have a valid Oil & Gas Lease?  Yes  No  
Depth and Type:  Junk in Hole at \_\_\_\_\_ (depth)  Tools in Hole at \_\_\_\_\_ (depth) Casing Leaks:  Yes  No Depth of casing leak(s): \_\_\_\_\_  
Type Completion:  ALT. I  ALT. II Depth of:  DV Tool: \_\_\_\_\_ w / \_\_\_\_\_ sacks of cement  Port Collar: \_\_\_\_\_ w / \_\_\_\_\_ sack of cement  
(depth) (depth)  
Packer Type: \_\_\_\_\_ Size: \_\_\_\_\_ Inch Set at: \_\_\_\_\_ Feet  
Total Depth: \_\_\_\_\_ Plug Back Depth: \_\_\_\_\_ Plug Back Method: \_\_\_\_\_

Geological Data:

Formation Name	Formation Top	Formation Base	Completion Information
1. _____	At: _____	to _____ Feet	Perforation Interval _____ to _____ Feet or Open Hole Interval _____ to _____ Feet
2. _____	At: _____	to _____ Feet	Perforation Interval _____ to _____ Feet or Open Hole Interval _____ to _____ Feet

UNDER PENALTY OF PERJURY I HEREBY ATTEST THAT THE INFORMATION CONTAINED HEREIN IS TRUE AND CORRECT TO THE BEST OF MY KNOWLEDGE

Submitted Electronically

**Do NOT Write in This Space - KCC USE ONLY**

Date Tested: \_\_\_\_\_ Results: \_\_\_\_\_ Date Plugged: \_\_\_\_\_ Date Repaired: \_\_\_\_\_ Date Put Back in Service: \_\_\_\_\_

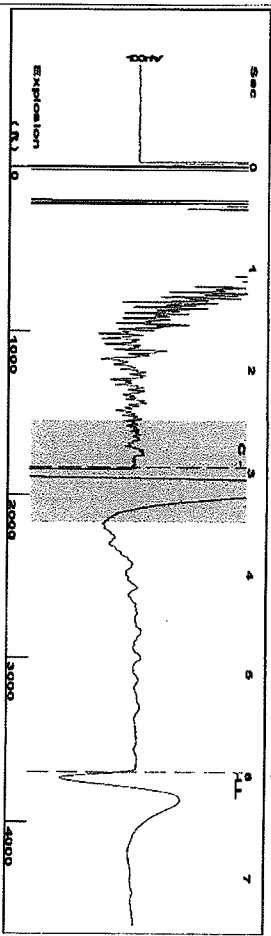
Review Completed by: \_\_\_\_\_ Comments: \_\_\_\_\_

TA Approved:  Yes  Denied Date: \_\_\_\_\_

Mail to the Appropriate KCC Conservation Office:

	KCC District Office #1 - 210 E. Frontview, Suite A, Dodge City, KS 67801	Phone 620.225.8888
	KCC District Office #2 / UPGS - 3450 N. Rock Road, Building 600, Suite 601, Wichita, KS 67226	Phone 316.630.4000
	KCC District Office #3 - 1500 SW Seventh Steet, Chanute, KS 66720	Phone 620.432.2300
	KCC District Office #4 - 2301 E. 13th Street, Hays, KS 67601-2651	Phone 785.625.0550

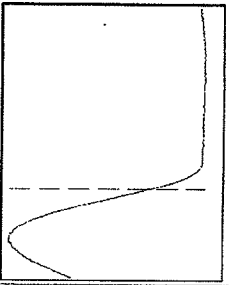
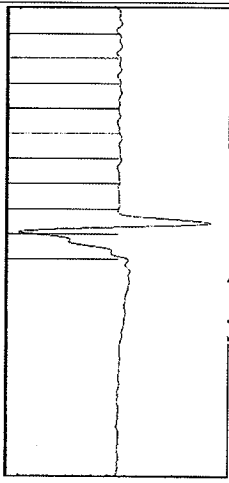
Group: Beat 2 (Liberal) Well: MORGAN K-2 (acquired on: 05/27/14 13:29:49)



Filter Type High Pass Automatic Collar Count Yes  
 Manual Acoustic Velo 1176.25 ft/s Manual JTS/sec 18.5529

[2.5 to 3.5 (Sec) ]

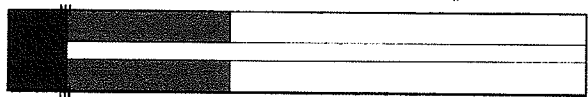
Time 5.96 sec  
 Joints 116,687 Jts  
 Depth 3698.97 ft



**Analysis Method: Automatic**

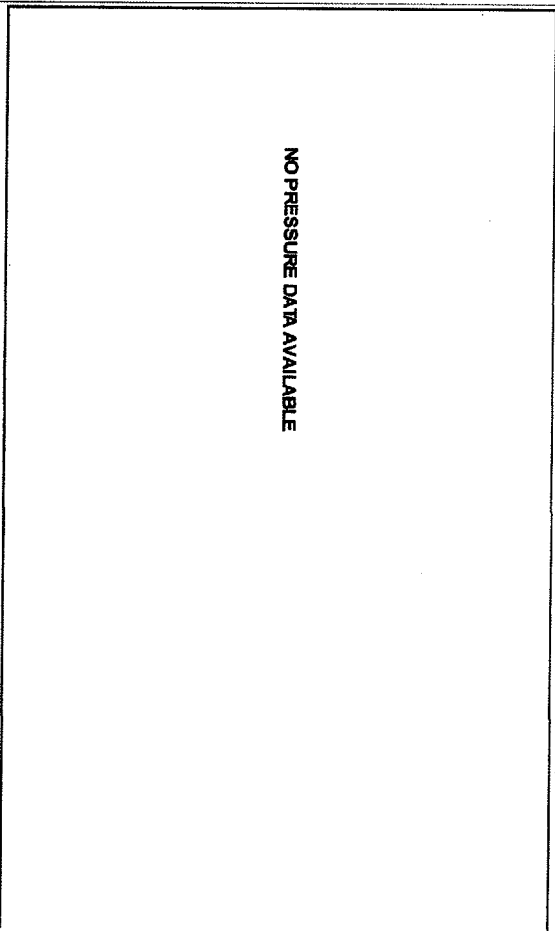
Group: Beat 2 (Liberal) Well: MORGAN K-2 (acquired on: 05/27/14 13:29:49)

Production	Potential	Casing Pressure	Producing
Oil 2	-* BBL/D	0.7 psi (g)	Annular Gas Flow
Water 1	-* BBL/D	-0.042 psi	% Liquid
Gas 35.0	-* Mscf/D	1.00 min	100 %
IPR Method PBHP/SBHP	Vogel	Gas/Liquid Interface Pressure 2.3 psi (g)	
Production Efficiency 0.0		Liquid Level Depth 3698.97 ft	
Oil 29 deg API		Pump Intake Depth 5720.00 ft	
Water 1.05 Sp.Gr.H2O		Formation Depth 5735.00 ft	
Gas 0.73 Sp.Gr.AIR			
Acoustic Velocity 1241.27 ft/s			
Formation Submergence			
Total Gaseous Liquid Column HT (TVD) 2021 ft			
Equivalent Gas Free Liquid HT (TVD) 2021 ft			
Acoustic Test			



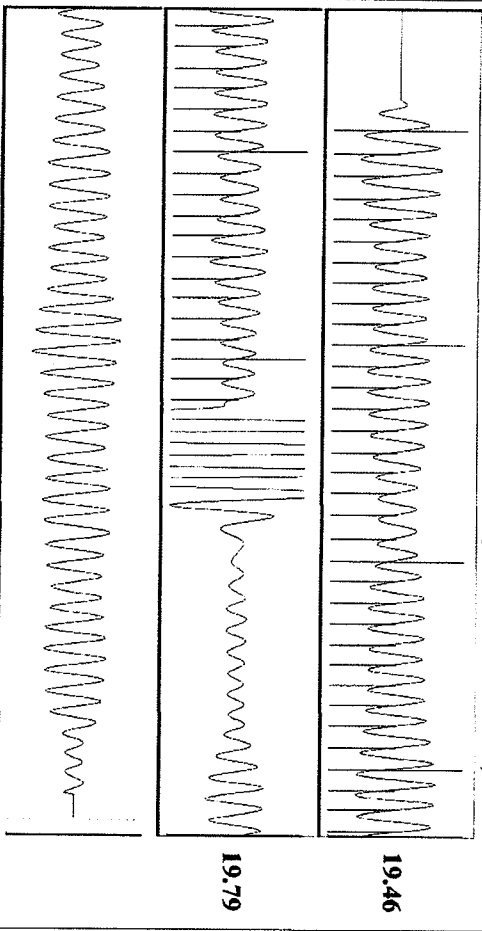
Pump Intake 741.5 psi (g)  
 Producing BHP 748.3 psi (g)  
 Static BHP 500.0 psi (g)

Group: Beat 2 (Liberal) Well: MORGAN K-2 (acquired on: 05/27/14 13:29:49)



Change in Pressure -0.04 psi NONE  
 Change in Time 1.00 min Range

Group: Beat 2 (Liberal) Well: MORGAN K-2 (acquired on: 05/27/14 13:29:49)



Acoustic Velocity 1241.27 ft/s Joints counted 52  
 Joints Per Second 19.5783 Jts/sec Joints to liquid level 116,687  
 Depth to liquid level 3698.97 ft Filter Width 16,5529  
 Automatic Collar Count Yes Time to 1st Collar 2,948

Conservation Division  
District Office No. 1  
210 E. Frontview, Suite A  
Dodge City, KS 67801



Phone: 620-225-8888  
Fax: 620-225-8885  
<http://kcc.ks.gov/>

Shari Feist Albrecht, Chair  
Jay Scott Emler, Commissioner  
Pat Apple, Commissioner

Sam Brownback, Governor

July 24, 2014

Ross King  
Merit Energy Company, LLC  
13727 NOEL RD STE 1200  
DALLAS, TX 75240

Re: Temporary Abandonment  
API 15-175-21367-00-02  
Morgan K 2  
NE/4 Sec.07-32S-33W  
Seward County, Kansas

Dear Ross King:

"Your temporary abandonment (TA) application for the well listed above has been approved. In accordance with K.A.R. 82-3-111 the TA status of this well will expire 07/24/2015.

- \* If you return this well to service or plug it, please notify the District Office.
- \* If you sell this well you are required to file a Transfer of Operator form, T-1.
- \* If the well will remain temporarily abandoned, you must submit a new TA application, CP-111, before 07/24/2015.

You may contact me at the number above if you have questions.

Very truly yours,

Michael Maier"