



# VINCENT OIL CORPORATION



Scale 1:240 Imperial

Well Name: Marfam 1-32  
Surface Location: NE NE NW NW 32-29S-24W  
Bottom Location:  
API: 15-057-20926  
License Number:  
Spud Date: 3/4/2014 Time: 5:30 PM  
Region:  
Drilling Completed: 3/14/2014 Time: 11:55 AM  
Surface Coordinates: 123 FSL & 1180 FWL  
Bottom Hole Coordinates:  
Ground Elevation: 2569.00ft  
K.B. Elevation: 2581.00ft  
Logged Interval: 4250.00ft To: 5466.00ft  
Total Depth: 5466.00ft  
Formation: MISS  
Drilling Fluid Type:

## OPERATOR

Company: Vincent Oil Corpotaion  
Address: 155 N Market ste 700  
Wichita, KS 67202  
Contact Geologist: Dick Jordan  
Contact Phone Nbr: 316-262-3573  
Well Name: Marfam 1-32  
Location: NE NE NW NW 32-29S-24W API: 15-057-20926  
Pool: Field:  
State: KS Country:

## CONTRACTOR

Contractor: Duke Drilling Co. Inc.  
Rig #: 1  
Rig Type: Rotary  
Spud Date: 3/4/2014 Time: 5:30 PM  
TD Date: 3/14/2014 Time: 11:55 AM  
Rig Release: 3/16/2014 Time: 12:00 AM

## ELEVATIONS

**ELEVATIONS**

K.B. Elevation: 2581.00ft  
K.B. to Ground: 12.00ft

Ground Elevation: 2569.00ft

**SURFACE CO-ORDINATES**

Well Type: Vertical  
Longitude: -99.9750619      Latitude: 37.4865506  
N/S Co-ord: 123 FSL  
E/W Co-ord: 1180 FWL

**OPEN HOLE LOGS**

Logging Company: Nabors Completion and Production Services Co.  
Logging Engineer: Jason Cappellucci  
Truck #: 4010  
Logging Date: 3/14/2014      Time Spent: 8  
# Logs Run: 4      # Logs Run Successful: 4

**LOGS RUN**

Tool	Logged Interval	Logged Interval	Hours	Remarks	Run #
DI	0.00ft	5468.00ft	4.00		1
CDE/NPE	4300.00ft	5468.00ft	4.00	Tool Malfun, Re-ran from 5444	1
MICRO	4300.00ft	5468.00ft	4.00		2
SONIC	600.00ft	5468.00ft	4.00		2

**LOGGING OPERATION SUMMARY**

Date	From	To	Description Of Operation
3/19/2014	0.00ft	0.00ft	

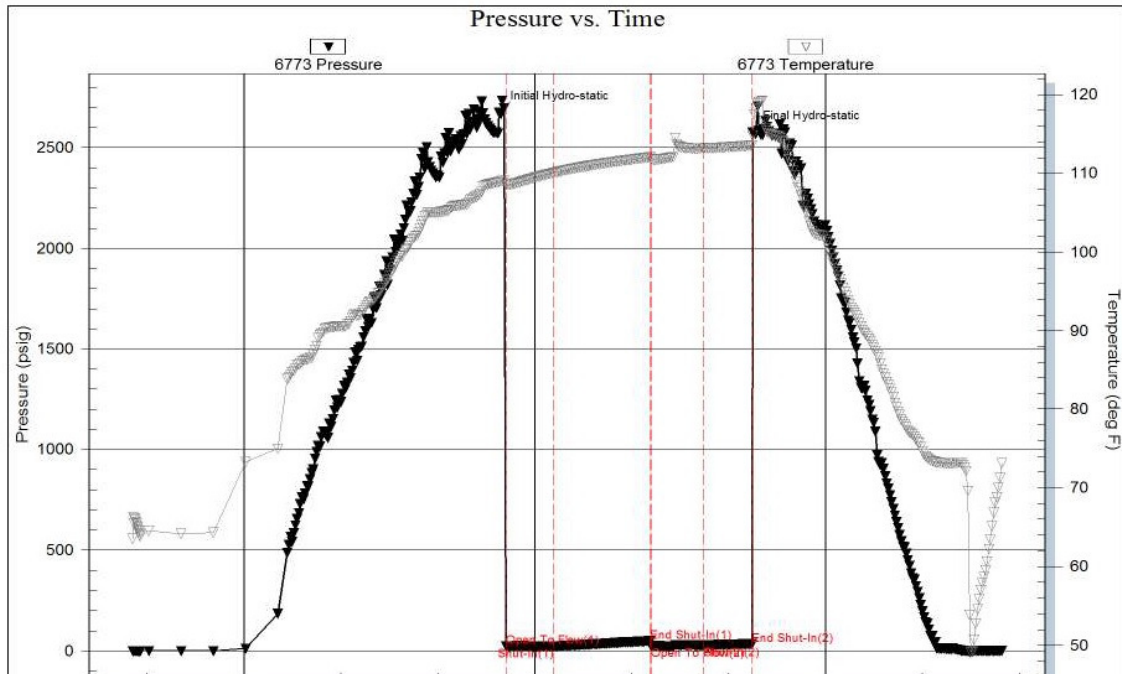
**CASING SUMMARY**

	Surface	Intermediate	Main		
Bit Size	12.25 in		7.88 in		
Hole Size	12.25 in		7.88 in		
	Size	Set At	Type	# of Joints	Drilled Out At
Surf Casing	8.625 in	650 ft	23#	15	3/5/2014 5:00 PM
Int Casing					
Prod Casing	4.5 in	5451 ft	11.6#	124	3/16/2014 12:00 AM

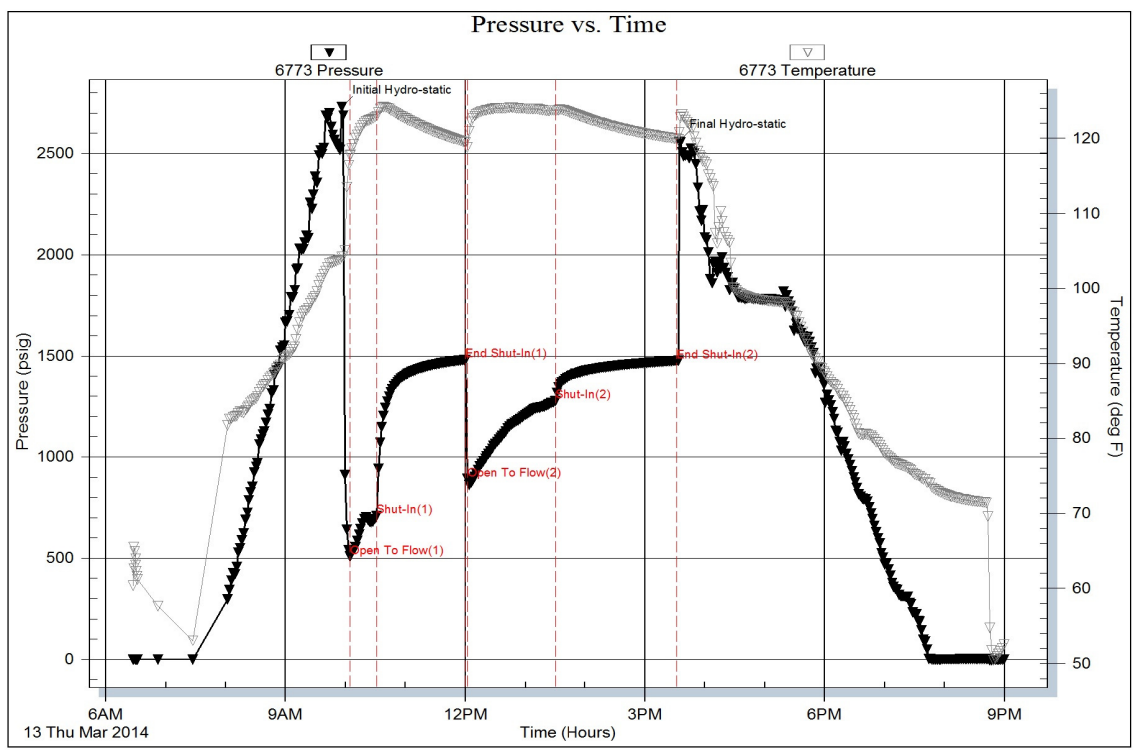
**CASING SEQUENCE**

Type	Hole Size	Casing Size	At
	0.00 in	0.00	0.00 ft

Serial #: 6773      Outside Vincent Oil Corporation      Marfam 1-32      DST Test Number: 1



Serial #: 6773 Outside Vincent Oil Corporation Marfam 1-32 DST Test Number: 2



**ROCK TYPES**

- Coal
- Lmst fw7>
- Shgy
- Shblk
- Lmst fw<7
- Ss

**ACCESSORIES**

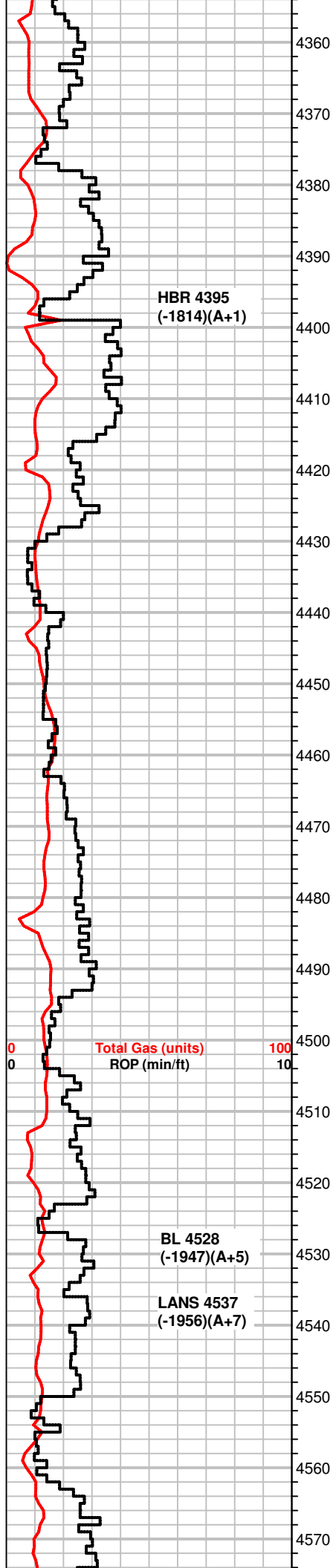
- |  |   |  |  |   |
|--|---|--|--|---|
| <p><b>MINERAL</b></p> <ul style="list-style-type: none"> <li>▲ Chert, dark</li> <li>∟ Dolomitic</li> <li>P Pyrite</li> <li>• Sandy</li> <li>• Silty</li> <li>△ Chert White</li> </ul> <p><b>MISC</b></p> <ul style="list-style-type: none"> <li>≡ Veins</li> </ul> | <p><b>FOSSIL</b></p> <ul style="list-style-type: none"> <li>○ Crinoids</li> <li>⊕ Foraminifera</li> <li>F Fossils &lt; 20%</li> <li>⊖ Oolite</li> </ul> | <p><b>STRINGER</b></p> <ul style="list-style-type: none"> <li>≡ Shale</li> </ul> | <p><b>TEXTURE</b></p> <ul style="list-style-type: none"> <li>C Chalky</li> <li>FX Finexln</li> </ul> | <p><b>DUNHAM</b></p> <ul style="list-style-type: none"> <li>MS Mudst</li> </ul> |
|--|---|--|--|---|

**OTHER SYMBOLS**

- |   |  |   |
|---|--|---|
| <p><b>POROSITY TYPE</b></p> <ul style="list-style-type: none"> <li>x Intercrystalline</li> <li>φ Interoolitic</li> <li>V Vuggy</li> <li>P Pinpoint</li> <li>∩ Moldic</li> <li>O Organic</li> <li>F Fracture</li> <li>e Earthy</li> <li>□ Fenestral</li> </ul> | <p><b>OIL SHOWS</b></p> <ul style="list-style-type: none"> <li>● Even Stn</li> <li>● Spotted Stn 50 - 75 %</li> <li>● Spotted Stn 25 - 50 %</li> <li>● Spotted Stn 1 - 25 %</li> <li>○ Questionable Stn</li> <li>D Dead Oil Stn</li> <li>■ Fluorescence</li> </ul> | <p><b>INTERVALS</b></p> <ul style="list-style-type: none"> <li>■ Core</li> <li>• DST</li> </ul> |
|---|--|---|

Curve Track #01						
Total Gas (units)	—					
ROP (min/ft)	—					
	Depth	Intervals	Porosity Types	Interpreted Lithology	Oil Shows	

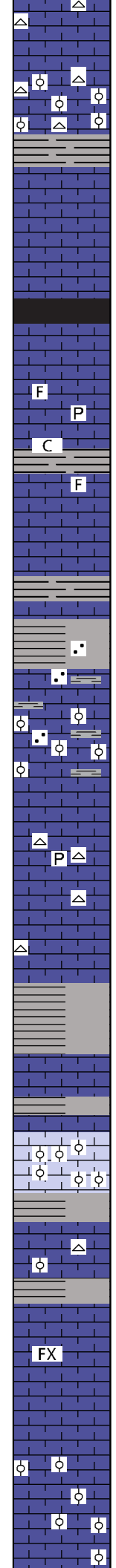
Cored Interval D R	DST Interval D R	In O	Geological Descriptions	Comment
<p>1:240 Imperial</p> <p>Total Gas (units) ROP (min/ft)</p>	<p>4150 0 100</p>		<p>4160</p> <p>4170</p> <p>4180</p> <p>4190</p> <p>4200</p> <p>4210</p> <p>4220</p> <p>4230</p> <p>4240</p> <p>4250</p>	<p>BLUESTEM LABS TRAILER W/ BLOODHOUND GAS UNIT ON LOC @ 4300</p> <p>GEO ON LOC @ 4335 9:00PM 3/9/14</p>
<p>Total Gas (units) ROP (min/ft)</p>	<p>4250 0 100</p>	<p>F</p> <p>C</p> <p>F</p>	<p>4250</p> <p>4260</p> <p>4270</p> <p>4280</p> <p>4290</p> <p>4300</p> <p>4310</p> <p>4320</p> <p>4330</p> <p>4340</p> <p>4350</p>	<p>MS, crm to gray, mottled looking matrix, some fossilif. pcs, firm, sli. chalky, Some SH, gray</p> <p>MS, gray, f-xln, fossilif, sli sandy, soft chalky pcs common, firm</p> <p>MS-WS, crm, mirco oolitic, chalky looking matrix, some SH, blk, gray Chert, blk, blocky</p> <p>MS, tan to gray, f-xln, firm, fossils(crinoids), Chert, blk</p> <p>MS, lt gray to gray, f-xln, earthy txt, chalky, soft SH, sandy, green</p> <p>MS, crm to gray, f-gr oolite pcs, friable, magnetite specs, NS</p>



HBR 4395  
(-1814)(A+1)

BL 4528  
(-1947)(A+5)

LANS 4537  
(-1956)(A+7)



MS, crm to lt. gray, f-xln, gritty txt in part, some crm to gray pcs, micro oolitic, dense  
Chert, white

SH, gray, dk, gray

SH, blk, carbonaceous

MS, crm to gray, mottled, mineral fluor, NS

F P

C F

MS, gray to crm, f-xln, firm to soft, some chalky pcs, Pyrite, fossilif. Some SH, blk

MS, crm, vf-xln, dense, earthy txt, rare fossilif, Rare SH, blk

SH, gray to green, sandy

MS, crm to brn, some mottled, f-xln, fossils, micro oolitic, sandy, dense.

MS, crm to tan, f-xln, dense, Pyrite  
Chert, white

MS-WS, crm to gray, f-xln, dense, min fluor, NS, Chert, tan, some SH, gray,

SH, gray, green

WS-PS, tan, micro oolitic, gray pcs, mottled, fossilif.

Sh, dk, gray

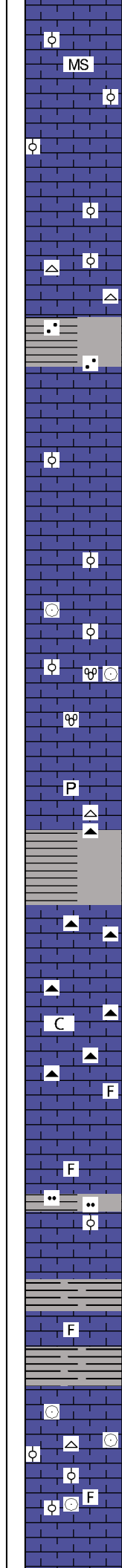
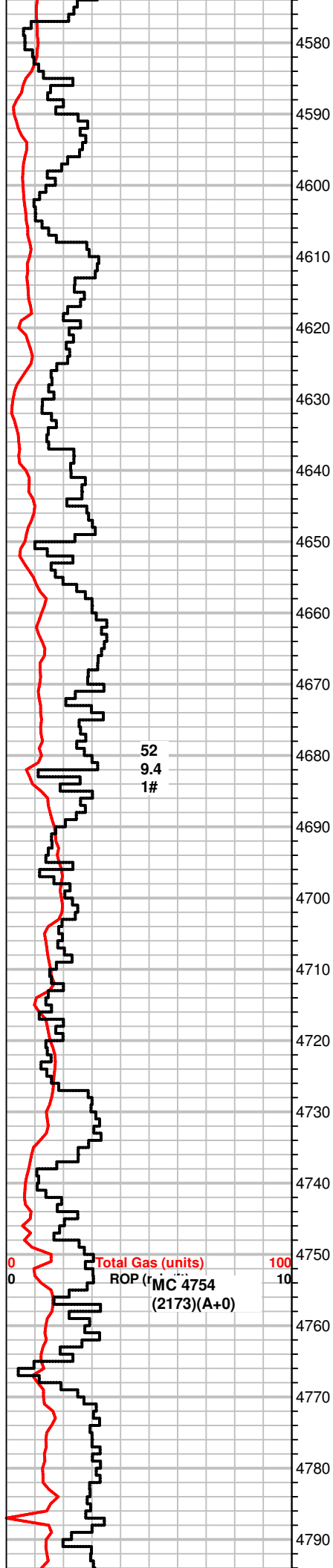
MS, brn, to tan, f-xln, dense, some fractured, fossils  
Chert, tan, some SH, gray

FX

MS, lt, gray to crm, f to m-xln, dense, NS

MS, crm to gray, brn, vf-xln to massive, some micro oolitic pcs, frim to hard, some dense, NS

19 Units, +7UGK shale gas



4580 MS, A.A, NS

4590 MS, A.A. NS  
Some SH, gray

4610 MS, crm, f-xln, dense, rare mottled pcs, Chert, opaque,  
SH, gray, sandy

4640 MS, crm to gray, vf-xln, massive txt, tite, dense, dull min. fluor, NS

4670 MS, crm to lt. gray, vf-xln, dense, gritty looking pcs throughout,  
fossilif(fusulinids, crinoids), some pcs brn, dense, f-xln, rare m-gr  
oolitic gray pcs

4680 SH, gray, dk, gray,

4690 MS brn to tan, some chalky, mottled pcs common, some brn stn,  
no fluor, no cut, NFO, some moldic, Pyrite  
Chert, tan

4700 SH, blk, green  
MS, crm to gray, dense, fossilif, some pcs m-gr oolitic,  
Chert, gray, fossilif

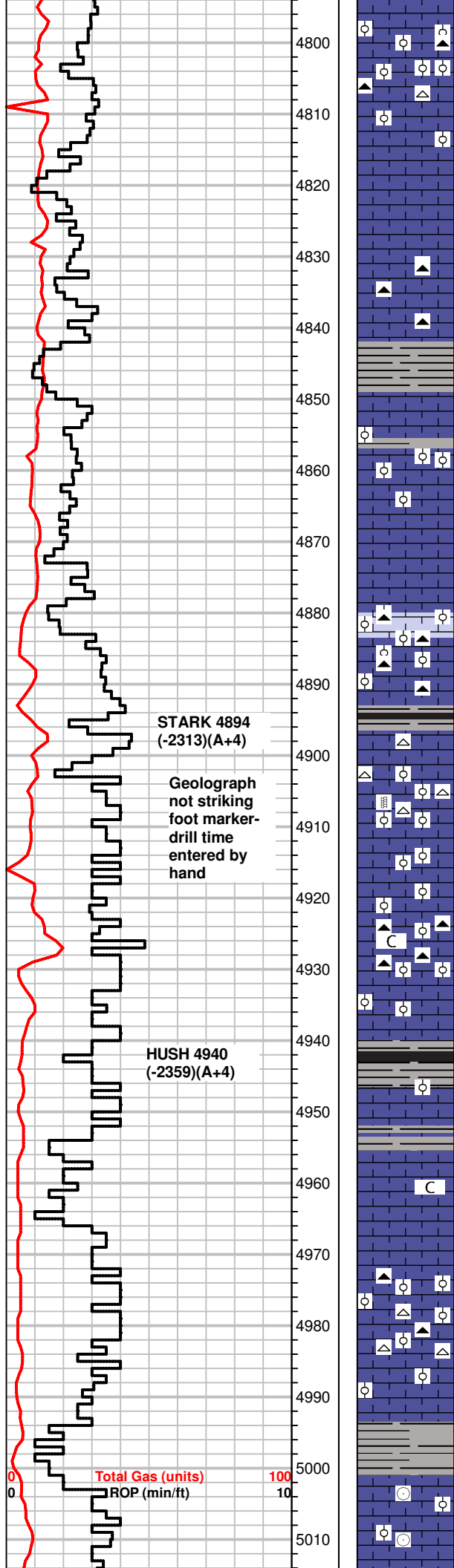
4720 MS, crm to tan, f-xln, dense, fossilif gray pcs, dense to chalky  
matrix,  
Chert, gray, brn

4740 MS, crm to gray, vf-xln, dense, massive txt, fossil frgmnts,  
SH, gray, green, silty

4760 MS, gray, some crm A.A. fossilif, f-xln gray pcs, NS

4780 MS, lt. gray, crm to brn, m-xln, fossilif, dense, dull fluor, NS

**16 Units, +9 UGK shale gas**



MS, gray, mic to f-xln pcs, dense, rare gray co-gr ooids, crinoids,  
 Chert, tan  
 Some SH, gray

MS, crm to gray, f-xln, dense, NS  
 SH, dk. gray, few small pcs

MS, tan to crm, mic-xln, dense  
 Chert, brn  
 influx SH, gray

More SH, gray, green  
 MS A.A., brn, mic-xln, fossilif.

MS, crm to tan, f-xln, firm, some fossils, some WS pcs, off white,  
 m-gr oolitic, hard  
 Chert, brn

SH, blk

**14 Units, +4 UGK, shale gas**

MS, crm, earthy, silty, gray pcs, hard, mic-xln, dense, calcite veins,  
 NS, Chert, opaque, oolitic  
 rare SH, blk

MS-WS, crm to brn, f-xln, fossilif, oolitic, dense, some chalky  
 Chert, gray fossilif, brn,

SH, gray to green, some blk pcs  
 MS, tan to gray, some grn, f-xln fossilif, dense, dull min fluor, NS

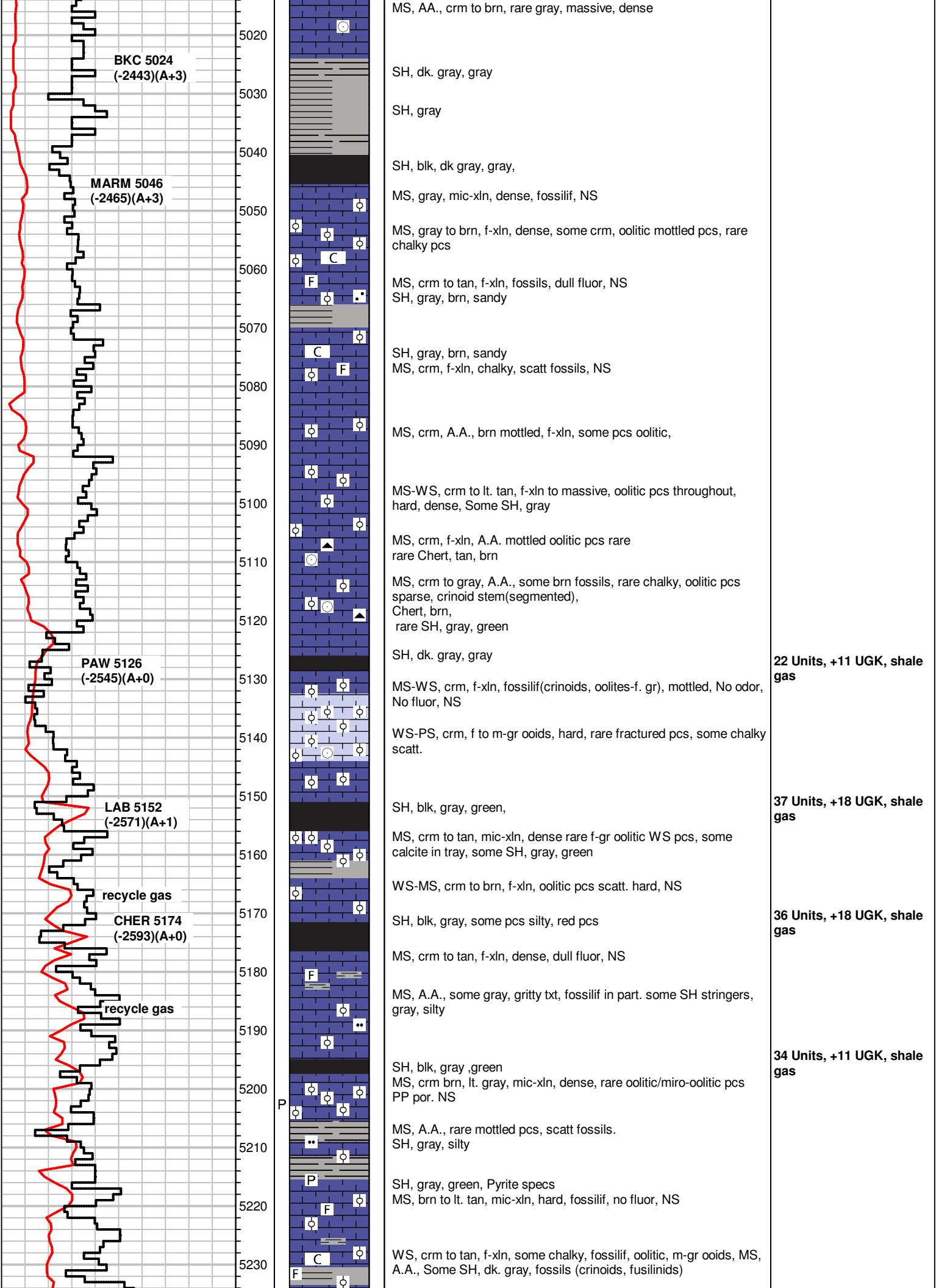
**19 Units, +10 UGK, shale gas**

MS, crm to brn, f-xln, chalky, silty, firm, min fluor, NS, Some brn  
 pcs, mic-xln, blocky, dense

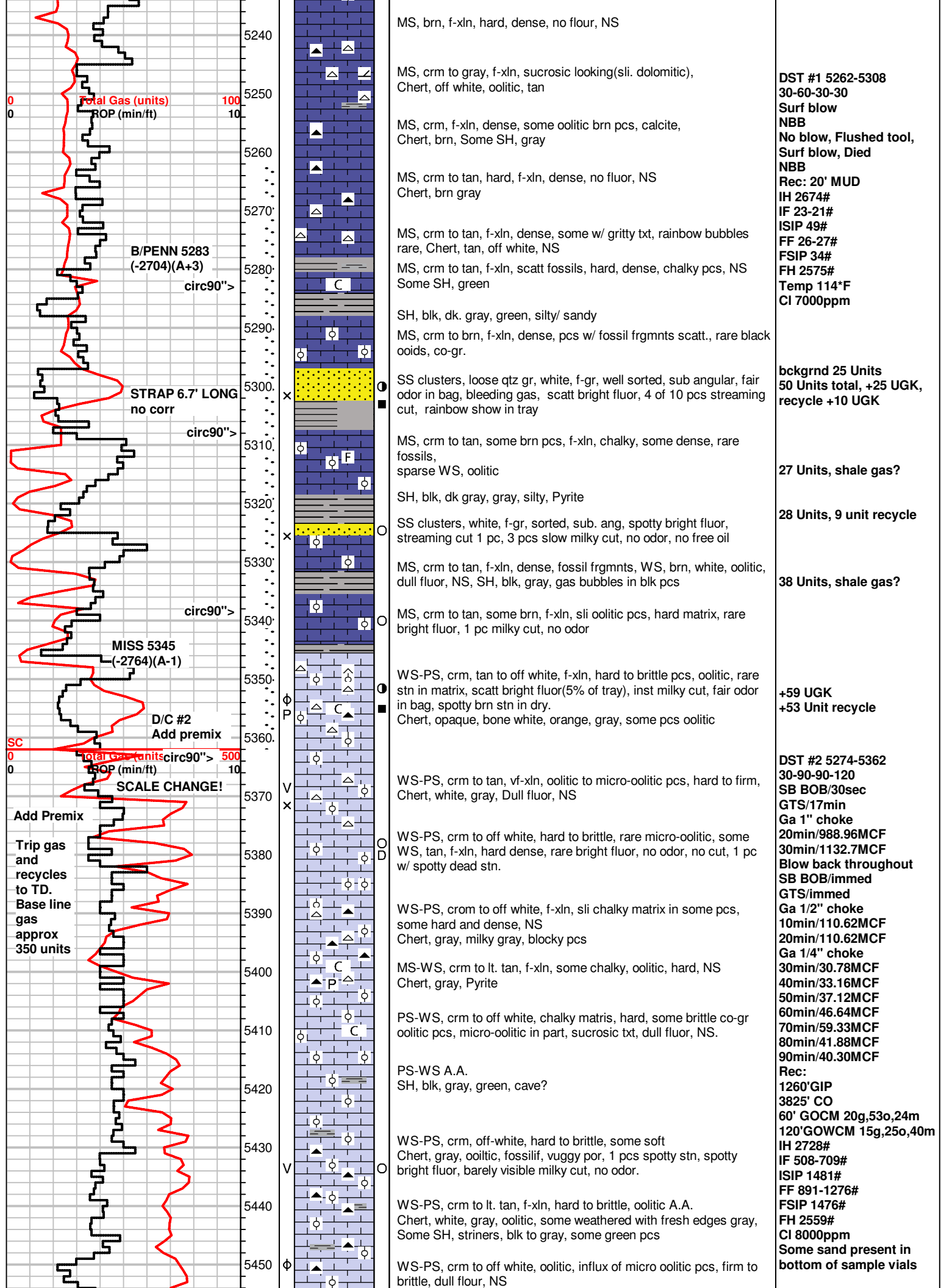
MW-WS, crm to brn, mic to f-xln, hard, NS  
 Chert, white micro oolitic, some brn, m-gr oolitic,  
 Some SH, gray, green

SH, gray, blk

MS, crm, f-xln, hard, fossilif, scatt oolitic pcs,







**DST #1 5262-5308**  
 30-60-30-30  
 Surf blow  
 NBB  
 No blow, Flushed tool,  
 Surf blow, Died  
 NBB  
 Rec: 20' MUD  
 IH 2674#  
 IF 23-21#  
 ISIP 49#  
 FF 26-27#  
 FSIP 34#  
 FH 2575#  
 Temp 114°F  
 CI 7000ppm

**bckgrnd 25 Units**  
 50 Units total, +25 UGK,  
 recycle +10 UGK

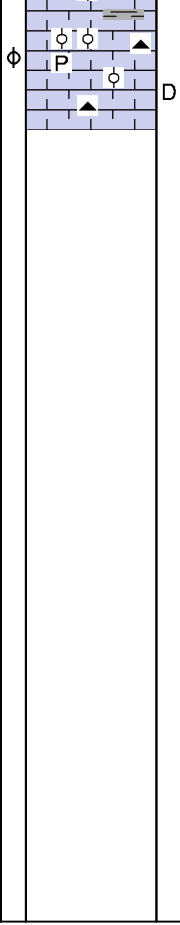
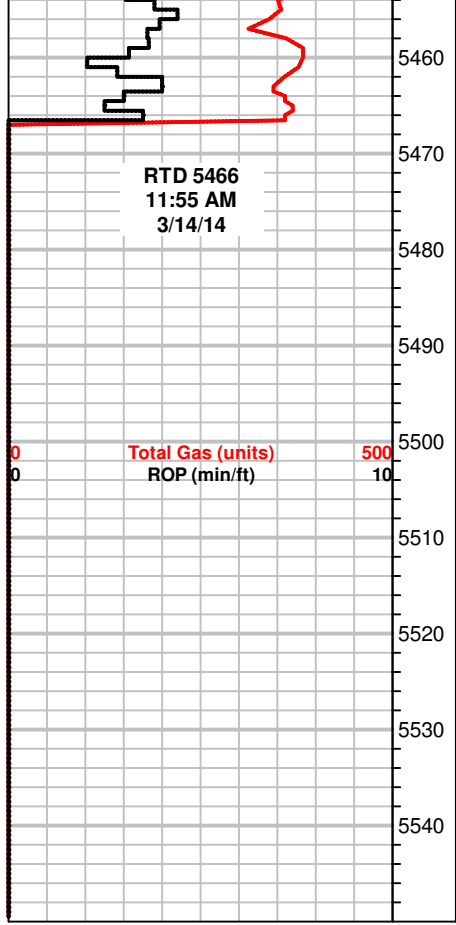
**27 Units, shale gas?**

**28 Units, 9 unit recycle**

**38 Units, shale gas?**

**+59 UGK**  
**+53 Unit recycle**

**DST #2 5274-5362**  
 30-90-90-120  
 SB BOB/30sec  
 GTS/17min  
 Ga 1" choke  
 20min/988.96MCF  
 30min/1132.7MCF  
 Blow back throughout  
 SB BOB/immed  
 GTS/immed  
 Ga 1/2" choke  
 10min/110.62MCF  
 20min/110.62MCF  
 Ga 1/4" choke  
 30min/30.78MCF  
 40min/33.16MCF  
 50min/37.12MCF  
 60min/46.64MCF  
 70min/59.33MCF  
 80min/41.88MCF  
 90min/40.30MCF  
 Rec:  
 1260'GIP  
 3825' CO  
 60' GOCM 20g,53o,24m  
 120'GOWCM 15g,25o,40m  
 IH 2728#  
 IF 508-709#  
 ISIP 1481#  
 FF 891-1276#  
 FSIP 1476#  
 FH 2559#  
 CI 8000ppm  
 Some sand present in  
 bottom of sample vials



Some MS, tan to crm, f-xln, firm,  
WS-PS, crm to off-white, firm, chalky matrix, oolitic to micro oolitic,  
some glauc specs, free Pyrite, glauc specs, dead stn 1 pc, no cut,  
no odor in bag, Chert, brn, tan