

LANE RADIOACTIVITY LOG WELLS

COMPANY S.O. 74062

FILE NO. 17437

Location of Well SW NE NW 20-16S-1W	COMPANY: DEEP ROCK OIL CORP. WELL: NORTON NO. 5 FIELD: HUNTER COUNTY: SALINE STATE: KANSAS LOCATION: SW NE NW SEC. 20 - 16S - 1W	COMPANY: DEEP ROCK OIL CORP. WELL: NORTON NO. 5 FIELD: HUNTER COUNTY: SALINE STATE: KANSAS LOCATION: SW NE NW SEC. 20-16S-1W
---	---	---

LOG MEAS. FROM	5' ABOVE BRADEN HEAD	ELEV. 1342
DRLG. MEAS. FROM	ROTARY KELLY BUSHING	ELEV. 1342
PERM. DATUM	5' ABOVE BRADEN HEAD	ELEV. 1342

TYPE OF LOG	GAMMA RAY	
RUN NO.	1 NW	
DATE	7-17-54	
TOTAL DEPTH (DRILLER)	1885	
EFFECTIVE DEPTH (DRILLER)	1500	
TOP OF LOGGED INTERVAL	1883	
BOTTOM OF LOGGED INTERVAL		
TYPE OF FLUID IN HOLE		
FLUID LEVEL		
MAXIMUM RECORDED TEMP.		
NEUTRON SOURCE STRENGTH & TYPE		
SOURCE SPACING — IN.		
LENGTH OF MEASURING DEVICE — IN.	36	
O.D. OF INSTRUMENT — IN.	3 5/8	
TIME CONSTANT — SECONDS	5	
LOGGING SPEED FT./MIN.	25	
STATISTICAL VARIATION — IN.		
SENSITIVITY REFERENCE	274	
RECORDED BY	MARGHEIM	
WITNESSED BY	MICHELS	

CASING RECORD					
RUN NO.	BIT SIZE	CASING	WT.—LB.	FROM WELL RECORD	FROM R/A LOG
1		10 3/4	32	SURF. TO 130	TO
2		7	20	SURF. TO 1913	TO
				TO	TO
				TO	TO
				TO	TO

REMARKS OR OTHER DATA

NOTE: GAMMA RAY ONLY.

GAMMA RAY

RADIATION INTENSITY INCREASES →

NEUTRON

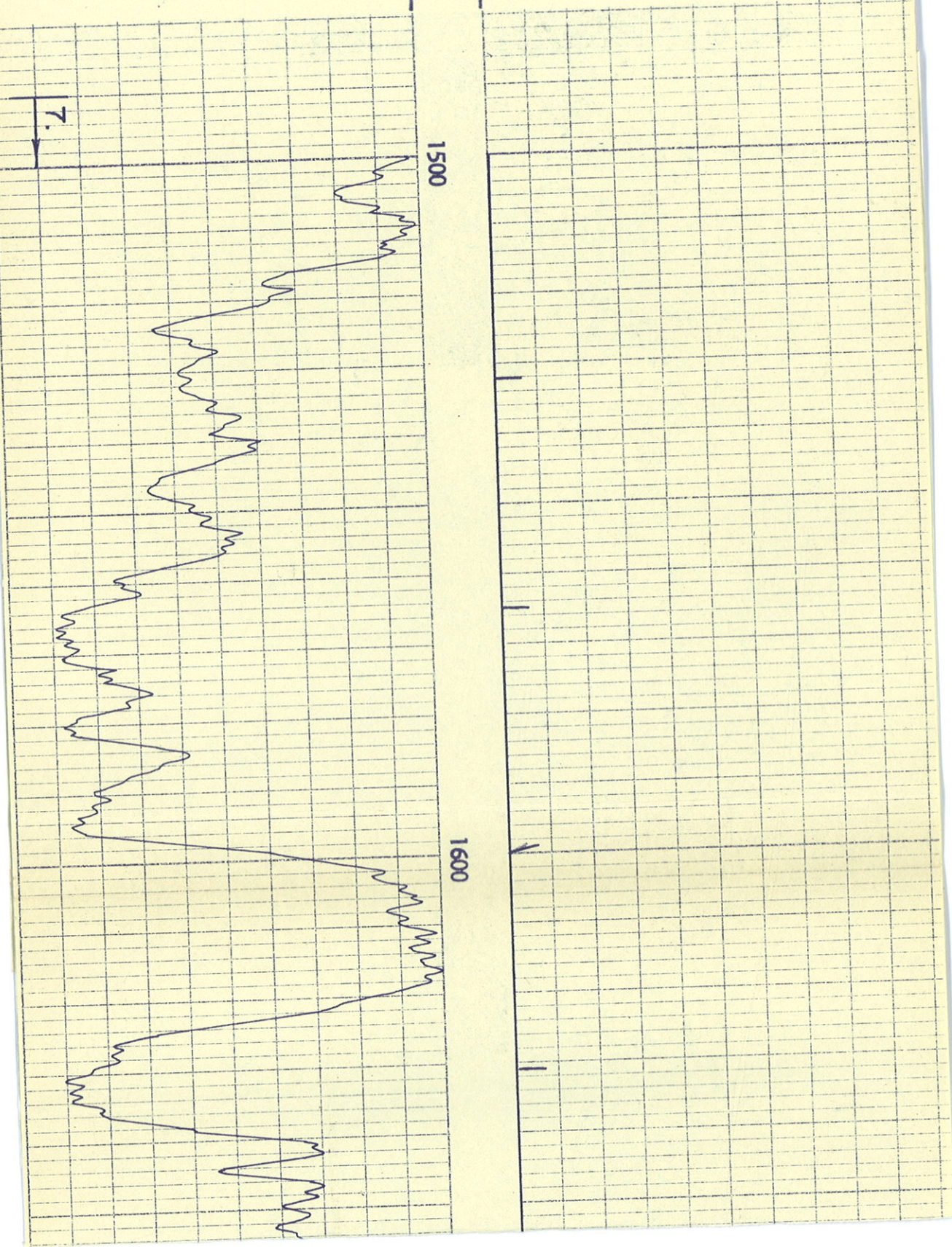
→ RADIATION INTENSITY INCREASES

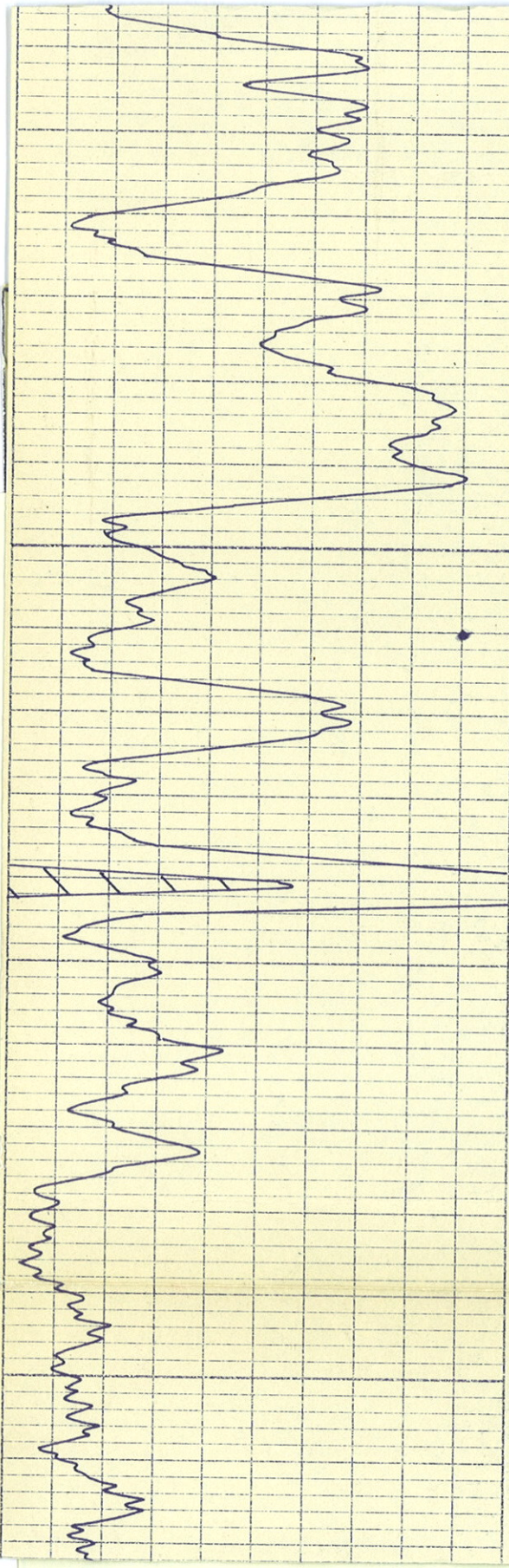
CASING &
COLLAR LOG
DEPTH

7.

1500

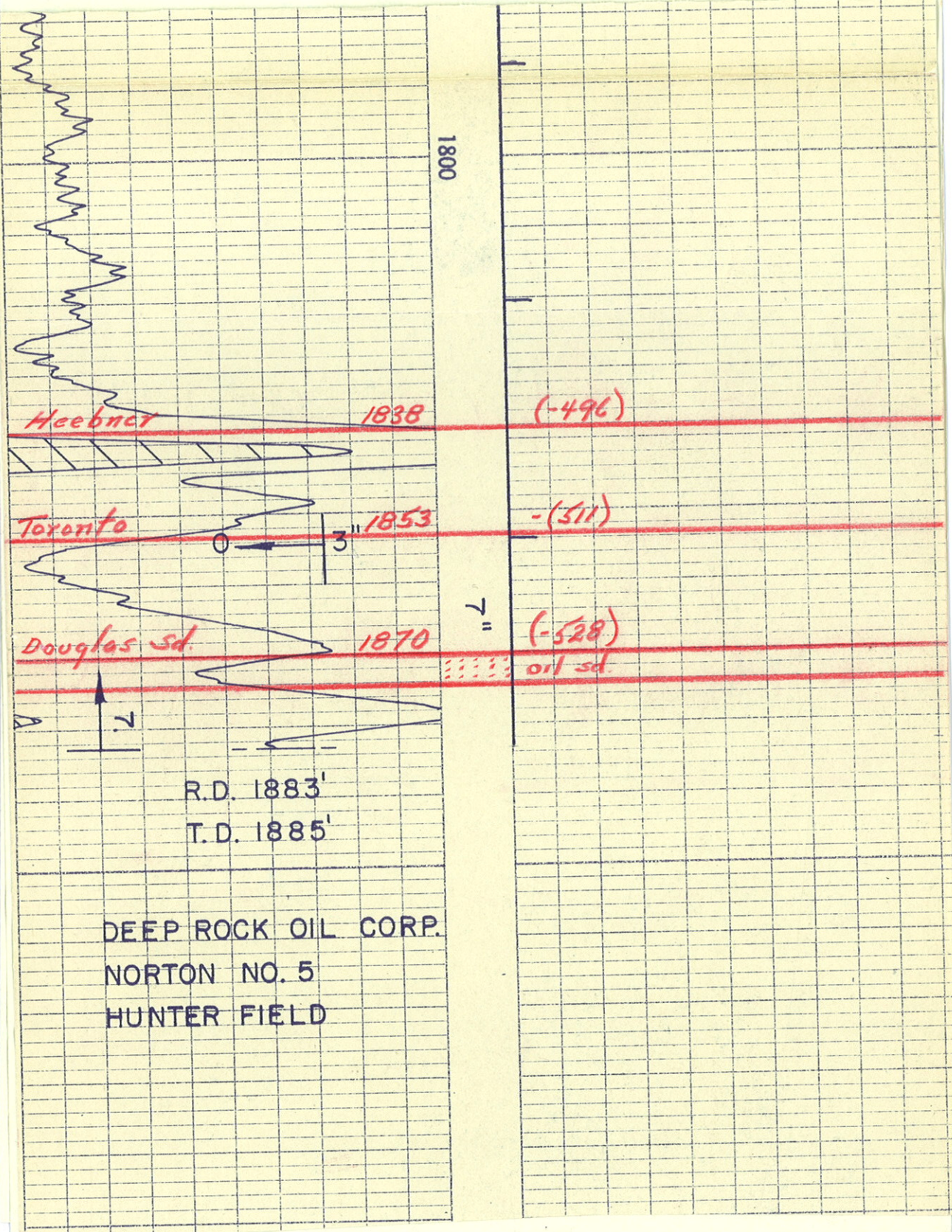
1600





1700

1800



1800

Heebner

1838

(-496)

Toronto

1853

(-511)

Douglas sd.

1870

(-528)

oil sd.

R.D. 1883'

T.D. 1885'

DEEP ROCK OIL CORP.
 NORTON NO. 5
 HUNTER FIELD