

LINN OPERATING INC. DELAY #4 ATU-117
 190' FNL
 230' FWL
 NW/4 OF NW/4 OF NW/4 OF
 SECTION 29, T-30-S, R-39-W
 LATITUDE: 37°25'01.13512" N
 LONGITUDE: 101°36'56.71036" W
 GROUND ELEVATION: 3210.9'



Keller
 Surveying &
 Mapping

2330 B LAKEVIEW DRIVE
 AMARILLO, TEXAS 79109
 PH: (806) 418-6253

DRAWN BY: JOK

APPROVED BY: JOK

SCALE: 1" = 200'

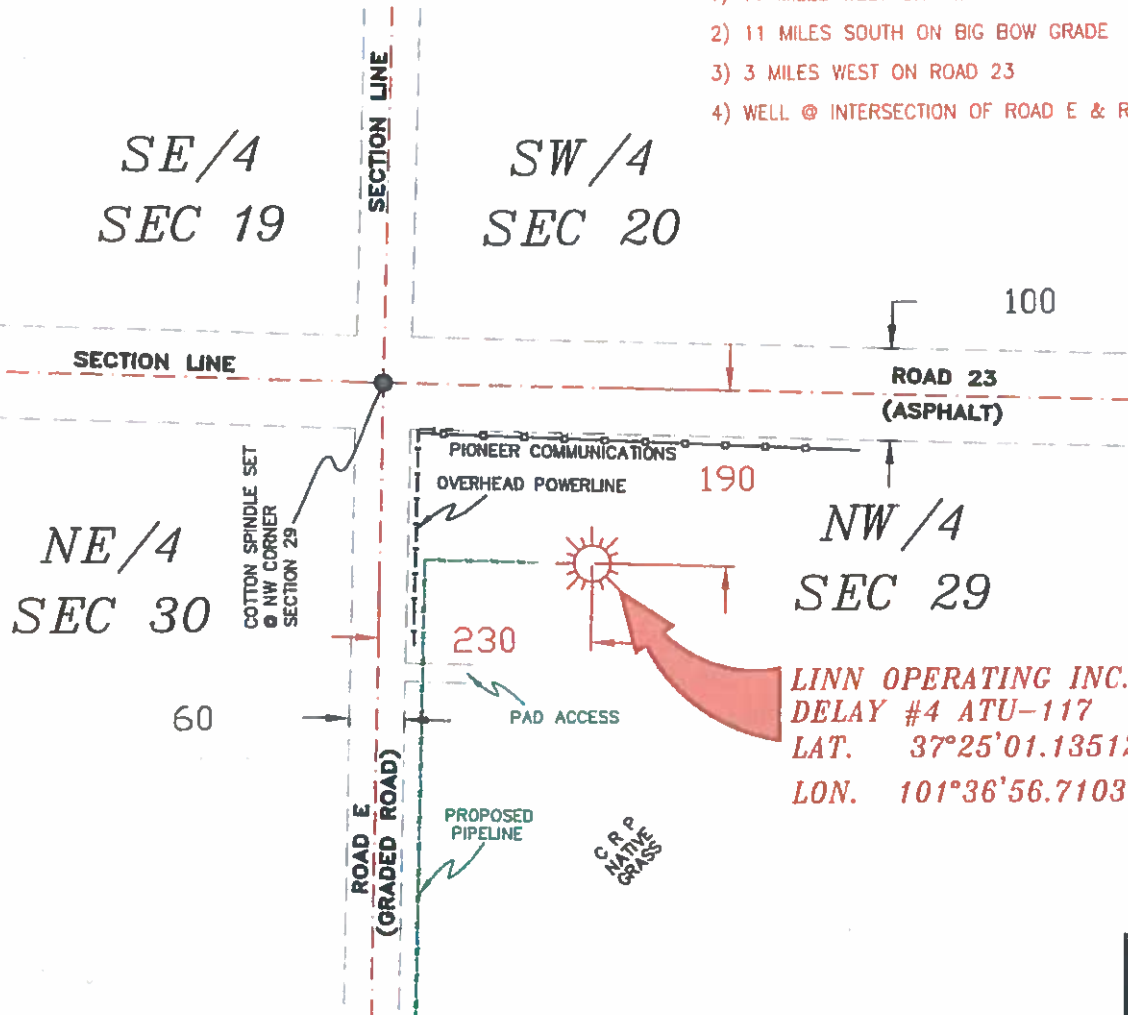
DATE: 12/30/13



2225 W. OKLAHOMA AVE.
 ULYSSES KANSAS 67880
 PH: (620) 356-6940
 FAX: (620) 356-6950

DRIVING DIRECTIONS:

- BEGINNING AT INTERSECTION OF US HWY 160 & HWY 25
- 1) 11 MILES WEST ON HWY 160 TO BIG BOW GRADE
- 2) 11 MILES SOUTH ON BIG BOW GRADE
- 3) 3 MILES WEST ON ROAD 23
- 4) WELL @ INTERSECTION OF ROAD E & ROAD 23

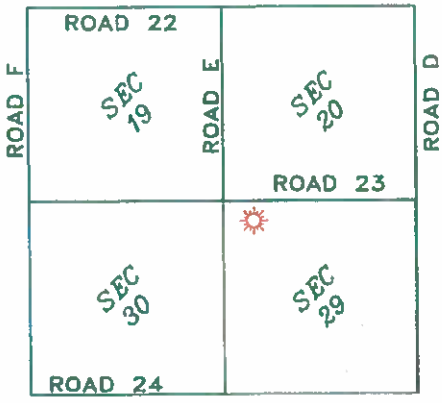


LINN OPERATING INC.
 DELAY #4 ATU-117
 LAT. 37°25'01.13512"
 LON. 101°36'56.71036"

NOTES:
 1) THIS PLAT DOES NOT REPRESENT A TRUE BOUNDARY SURVEY. THE PROPOSED AND TEST SHOWN ARE FROM LINES OF OCCUPATION WHICH MAY NOT BE ACTUAL PROPERTY LINES.
 2) CONTRACTOR TO CONTACT ONE-CALL FOR FOREIGN UTILITY LOCATIONS PRIOR TO ANY EXCAVATION OR CONSTRUCTION.
 3) NAD 27 LAT-LONG



JOHN DAVID KELLER, L.S. NO. 1518



T-30-S, R-39-W
 STANTON COUNTY, KANSAS

LINN OPERATING INC.
DELAY #4 ATU-117
 SECTIONS 19, 20, 29 & 30,
 T-30-S, R-39-W,
 STANTON COUNTY,
 KANSAS

PLAT AND CERTIFICATION OF ACREAGE ATTRIBUTABLE TO A GAS WELL

Kansas Corporation Commission, Conservation Division
 Finney State Office Building, 130 South Market, Room 2078
 Wichita, Kansas 67202

API NUMBER 15- _____

LOCATION OF WELL: COUNTY Stanton

OPERATOR LINN Operating, Inc.

190 N feet from south/north line of section

LEASE Delay

230 W feet from east / west line of section

WELL NUMBER 4 ATU-117

FIELD Hugoton-Panoma

SECTION 29 TWP 30 (S) RG 39W E/W

NUMBER OF ACRES ATTRIBUTABLE TO WELL 640

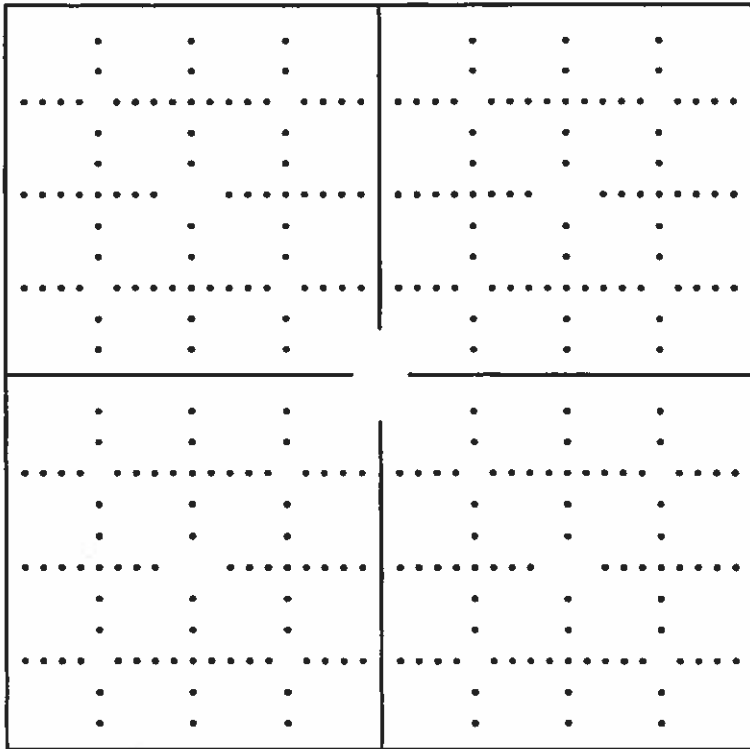
IS SECTION X REGULAR or _____ IRREGULAR

QTR/QTR/QTR OF ACREAGE NW - NW - NW

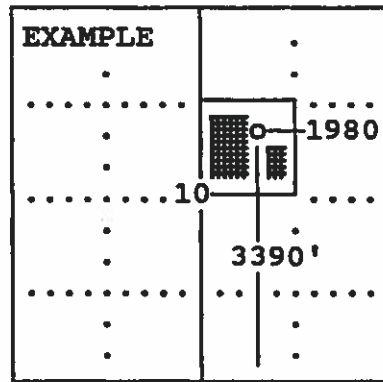
IF SECTION IS IRREGULAR, LOCATE WELL FROM NEAREST CORNER BOUNDARY. (check line below)

Section corner used: NE NW SE SW

(Show the location of the well and shade attributable acreage for prorated or spaced wells).
 (Show the footage to the nearest lease or unit boundary line; and show footage to the nearest common source supply well).



All attached maps



SEWARD CO.

The undersigned hereby certifies as Regulatory Compliance Advisor (title) for LINN Operating, Inc.

(Co.), a duly authorized agent, that all information shown hereon is true and correct to the best of my knowledge and belief, that all acreage claimed attributable to the well named herein is held by production from that well and hereby make application for an allowable to be assigned to the well upon the filing of this form and the State test, whichever is later.

Signature *Shawn Hiers*

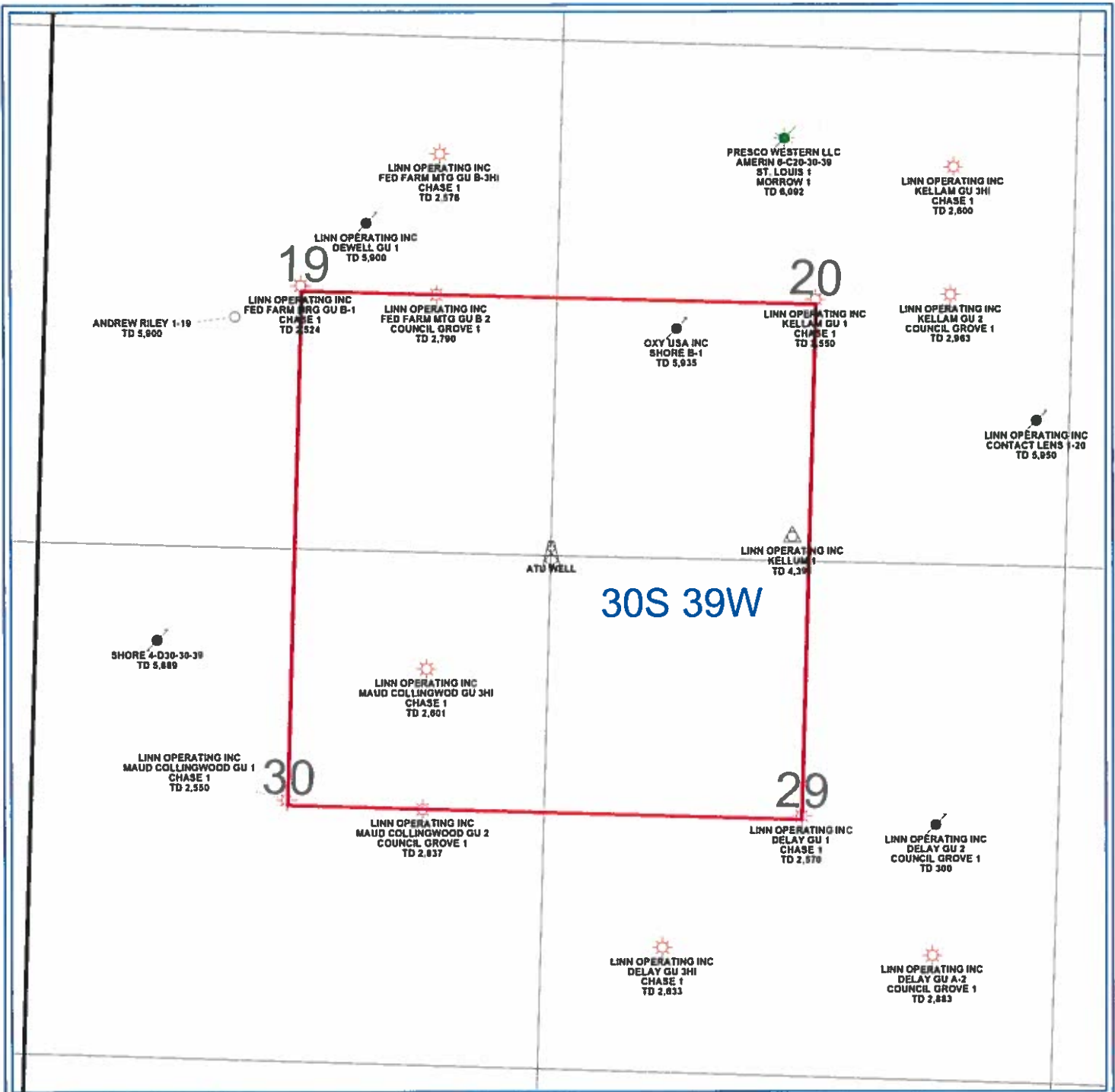
Subscribed and sworn to before me on this 1st day of July, 19 2014

Mindy Poter

My Commission expires 2/19/17



Notary Public
 FORM CG-8 (12/94)



PETRA 1/29/2013 7:44:42 AM

LINN Operating Inc

Hugoton Kansas

ATU Location

30S - 39W Stanton Co.



- WELL SYMBOLS**
- ATU Well Location
 - Gas Well
 - Plugged and Abandoned
 - Plugged And Abandoned Oil and Gas Well
 - Service Well