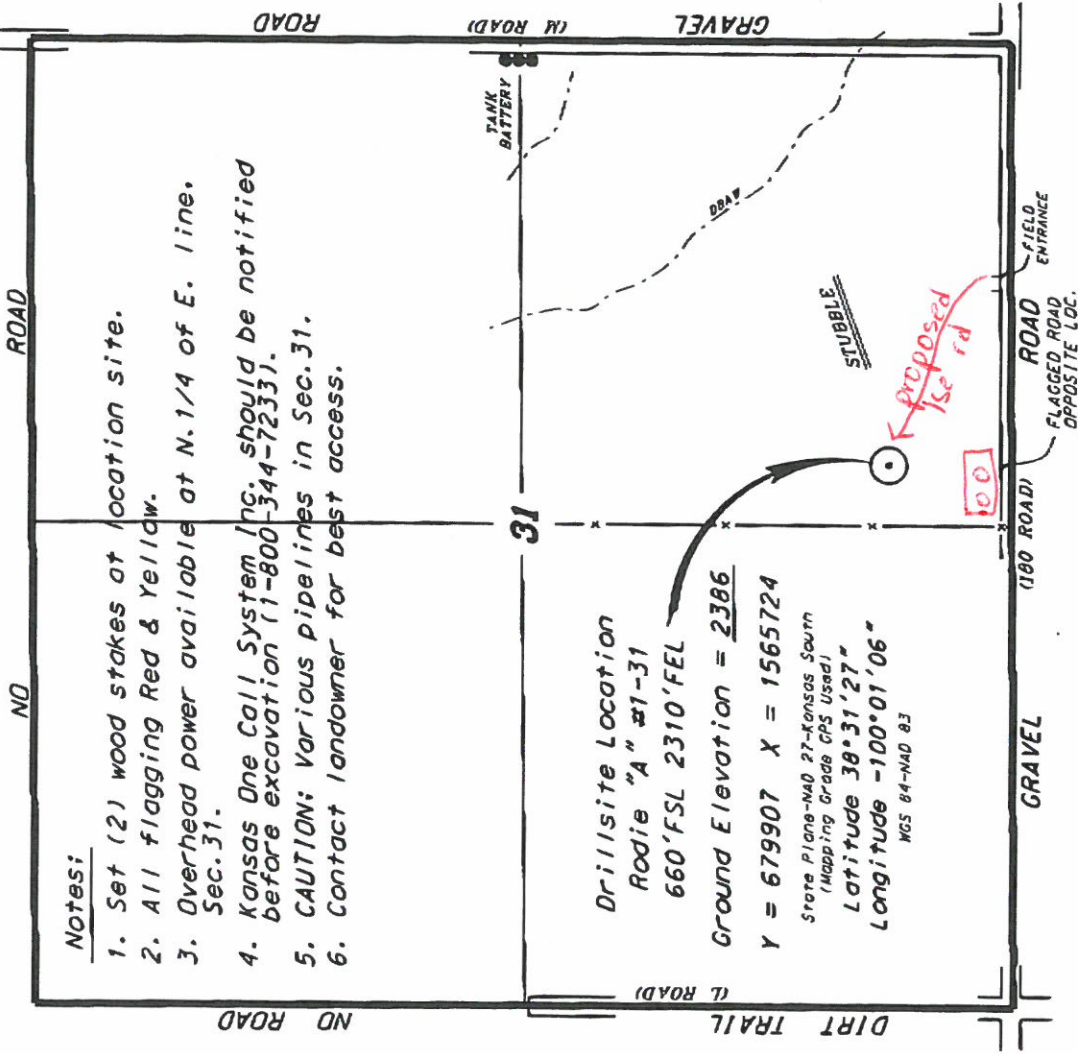


**TRANS PACIFIC OIL CORPORATION**  
**RODIE LEASE**  
 SE. 1/4, SECTION 31, T17S, R24W  
 NESS COUNTY, KANSAS



**Notes:**

1. Set (2) wood stakes at location site.
2. All flagging Red & Yellow.
3. Overhead power available at N. 1/4 of E. line. Sec. 31.
4. Kansas One Call System Inc. should be notified before excavation (1-800-344-7233).
5. CAUTION: Various pipelines in Sec. 31.
6. Contact landowner for best access.

*Drillsite Location*  
 Rodie "A" #1-31  
 660' FSL 2310' FEL

Ground Elevation = 2386

Y = 679907 X = 1565724

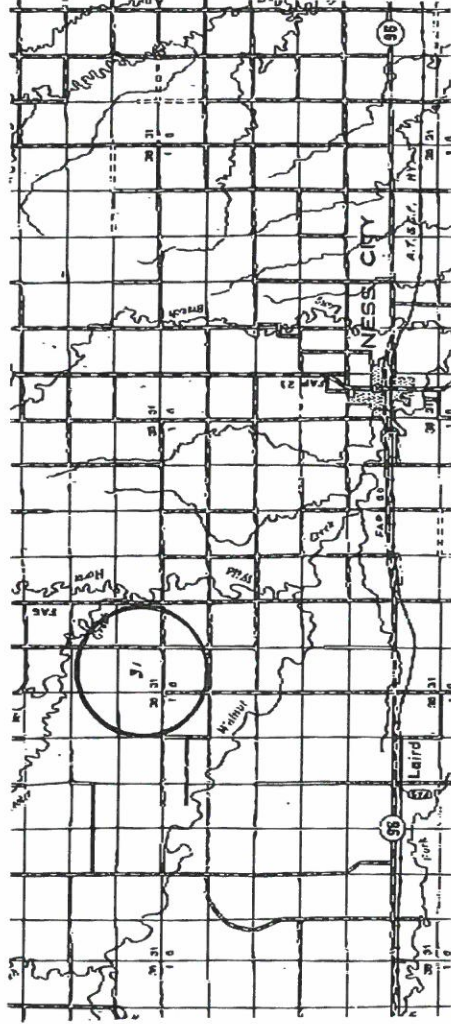
State Plane-NAD 27-Kansas South  
 (Mapping Grade GPS Used)

Latitude 38°31'27"

Longitude -100°01'06"

NGS 84-NAD 83

\*Ingress and egress to location as shown on this plot is for usage only and may not be legally opened for public use. Contact landowner, tenant and county road department for access.



• Digitized maps in paper were the best maps and photographs available to us and when a repair or replacement section lines were determined us for the normal purposes of use of all field surveys practicing in the state of Kansas. The section corners, which establish the precise section lines, were not necessarily located, and the exact location of the drillsite location in the section is not necessarily shown. The maps were prepared by Central Kansas Oilfield Services, Inc. Its officers and employees represent that they have made a diligent search of all records, books and papers and data which are released from any liability or other obligation arising from National Geographic, Westcoast, Danon.

Date July 2, 2014

**CENTRAL KANSAS OILFIELD SERVICES, INC. (620)792-1977**