



Geologist's Report

Company: Hembree, Robert F.

Lease: Petersilie #6

Field: Petersilie Northeast

Surface Location: N2-NE-SE-SE (1108' FSL & 330' FEL)

Sec: 12 Twp: 20S Rge: 24W

County: Ness State: Kansas

GL: 2323' KB: 2330'

Contractor: Pickrell Drilling Rig #10

Spud: 5/19/14 Comp: 5/24/14

RTD: 4450' LTD:

Mud Up: +/- 3400' Mud Type: Chemical Displaced

Drilling Time Kept From: 3650' to RTD

Samples Saved From: 3650' to RTD

Samples Examined: 3700' to RTD

Geological Supervision: 3950' to RTD

Geologist on Well: Kurt Talbott

Surface Casing: 8 5/8"@ 222'

Production Casing: None








Wireline Logs: None

Image Header 02

	PETERSILIE #6		PETERSILIE #4		PETERSILIE #3	
	2330 KB		2329 KB		2330 KB	
FORMATION	MD	MD SS	Log	SS	MD	SS
ANHYDRITE						
BASE ANHY						
HEEBNER	3752	-1422	3750	-1421	3752	-1422
TORONTO	3777	-1447	3778	-1449	3769	-1439
LANSING	3803	-1473	3799	-1470	3799	-1469
BASE KC	4128	-1798	4121	-1792	4118	-1788
MARMATON	4162	-1832	4157	-1828	4155	-1825
ALTAMONT	4191	-1861	4185	-1856	4186	-1856
PAWNEE	4240	-1910	4234	-1905	4230	-1900
FORT SCOTT	4312	-1982	4309	-1980	4306	-1976
OSAGE	4322	-1992	4322	-1992	4322	-1992

CHEROKEE	4338	-2008	4333	-2004	4327	-1997
MISSISSIPPIAN	NA	NA	4422	-2093	4414	-2084
TOTAL DEPTH	4450	-2120	4484	-2155	4422	-2092

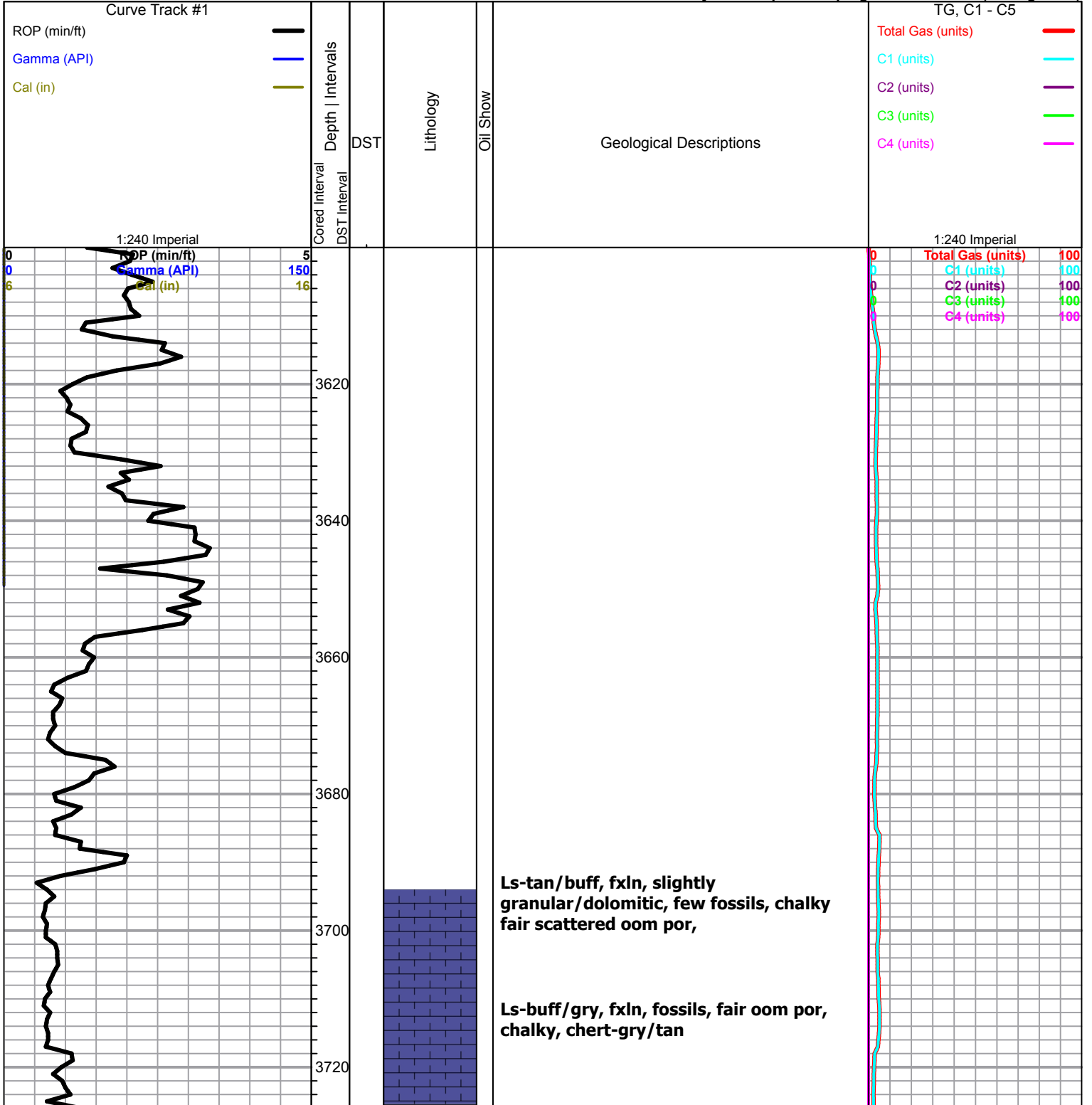
ROCK TYPES

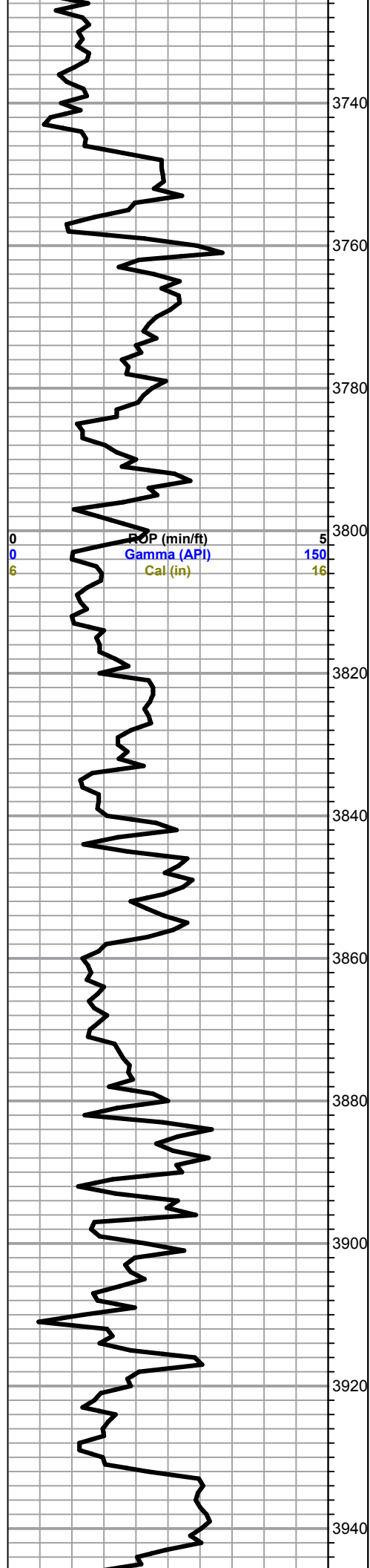
 Congl	 shale, grn	 Carbon Sh	 Ss
 Lmst fw<7	 shale, gry	 shale, red	

OTHER SYMBOLS

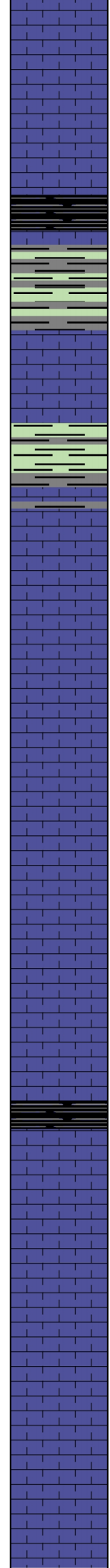
EVENTS	INTERVALS	DST
⌋ Casing Shoe	■ Core	■ DST Int
▽ RTF	· DST	■ DST alt
▶ Sidewall		
▶ Left Casing Shoe		
▶ Right Casing Shoe		

Printed by GEOstrip VC Striplog version 4.0.8.9 (www.grsi.ca)





0 ROP (min/ft) 5
 0 Gamma (API) 150
 6 Cal (in) 16



A/A slightly dolomitic chert-gry/tan,

Heebner 3752.0 (-1422.0) 0.0
Black carbon shale

Toronto 3777.0 (-1447.0) 0.0
Ls-gry/tan, fxln, few fossils/ool, dense poor scattered por, Chalky
Shale-brwn/gry

Lansing 3803.0 (-1473.0) 0.0
Ls-wht, fine to med xln, few fossils, scattered por, chalky

Ls-wht/lt gry, fxln, fossils/ool, dense, poor vis por, chalky

Ls-crm/wht, fxln, dense, poor scattered por, chalky

Ls-wht/lt gry, fxln, fossils, chalky, poor vis por,

Ls-wht/lt gry, fxln, ool, scattered iner ool to sub oom por, chalky

A/A Chert- gry
Black carbon shale

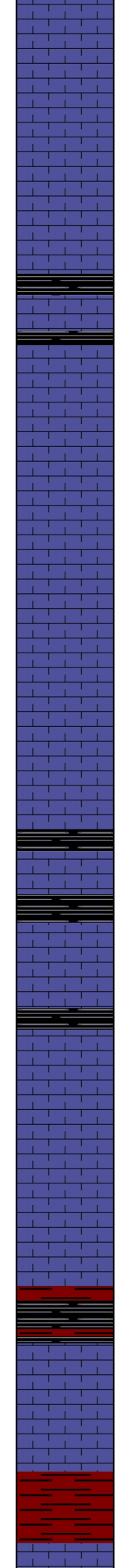
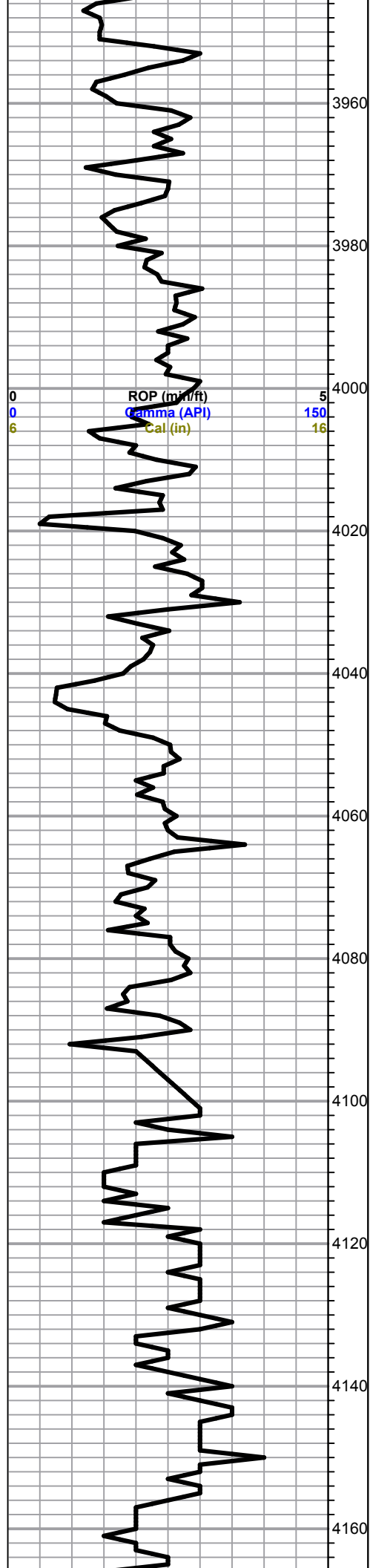
Ls-crm/tan, fxln, chalky, few fossils, chert-gry

Ls-crm/tan, fxln, ool/fossils, poor scattered por, chalky no vis shows

Ls-wht/crm, fxln, fossils/ool, oom, fair to good oom por, chalky, no vis shows

Ls-crm/tan, fxln, ool, dense, poor vis por, cherty in part, chert-tan/gry

0 **Total Gas (units)** 100
 0 **C1 (units)** 100
 0 **C2 (units)** 100
 0 **C3 (units)** 100
 6 **C4 (units)** 100



A/A

Ls-tan/lt gry, fxln, dense, cherty in part, few fossils, poor vis por, black carbon shale

Ls-crm/tan, fxln, ool, oom, scattered oom por, cahiky

Ls-crm/tan, fxln, ool, dense, poor vis por

Ls-wht/crm, ool, oom, chalky, oom por, barren

Ls-tan/lt gry, flxn, dense, poor vis por, cherty in part, chalky, Trace black carbon shale

Black carbon shale

Ls-wht/crm, fxln, fossils, poor vis por, chalky

A/A few sparry calvite cement

Base KC 4128.0 (-1798.0) 0.0

Black carbon shale

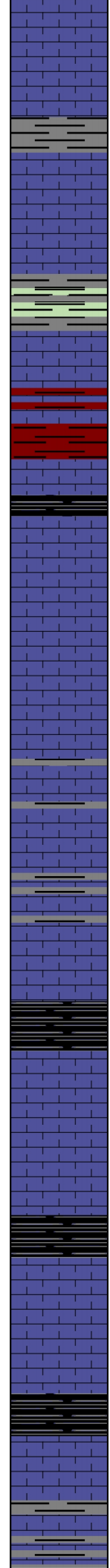
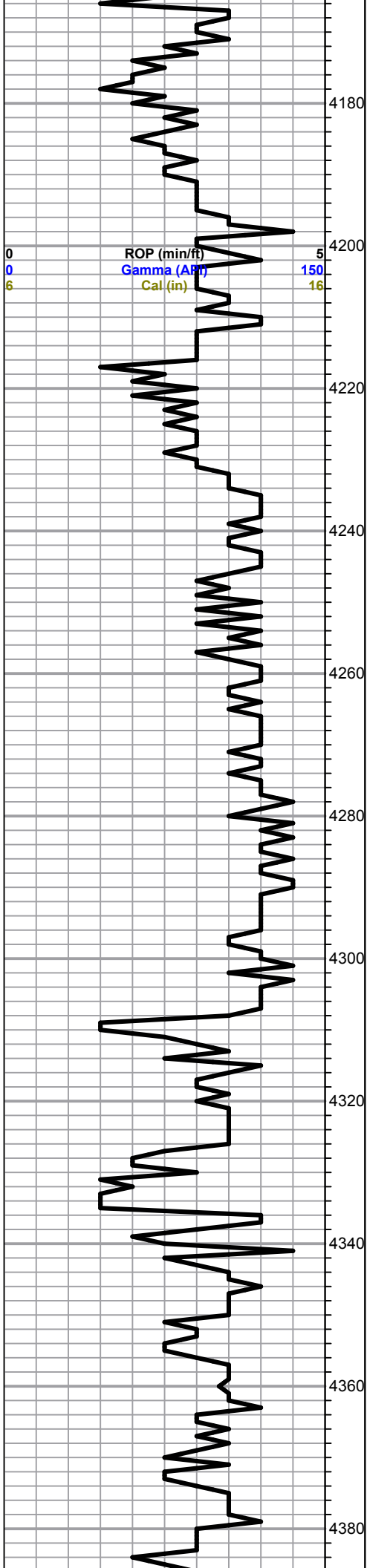
Ls-wht/gry chalky trace wht chert-fossils

A/A

Shale-gry/maroon

Marmaton 4162.0 (-1832.0) 0.0

Total Gas (units)	100
C1 (units)	100
C2 (units)	100
C3 (units)	100
C4 (units)	100



Ls-wht/crm, fxln, few fossils, sub oom in part, poor vis por, n/s

Altamont 4191.0 (-1861.0) 0.0

Ls-wht/crm, fxln, few fossils, chalky, cherty in part, poor vis por

Gry/grn shale

Ls- wht/crm, fxln, few fossils, cahlky

Shale-maroon/grn

Pawnee 4240.0 (-1910.0) 0.0

Ls-wht/crm, fxln, ool, chalky, dense, boney wht cherty

Ls-wht/gry, fxln, chalky, chert-gry

A/A

A/A few shaley in part

Black carbon shale

Fort Scott 4312.0 (-1982.0) 0.0

Ls-tan/crm, fxln, ool/fossils in part, scattered iner xln to iner ool pro, brown to dull brown stains, SFo, faint to fair odor

Ls-crm/wht, fxln, chalky, chert crm/wht-fossils

Cherokee 4338.0 (-2208.0) 0.0

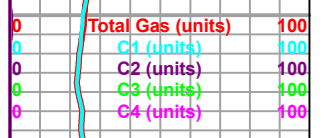
Black carbon shale

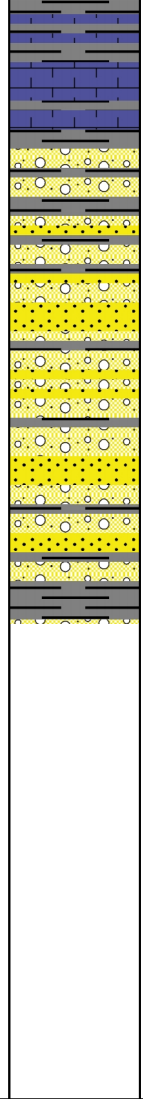
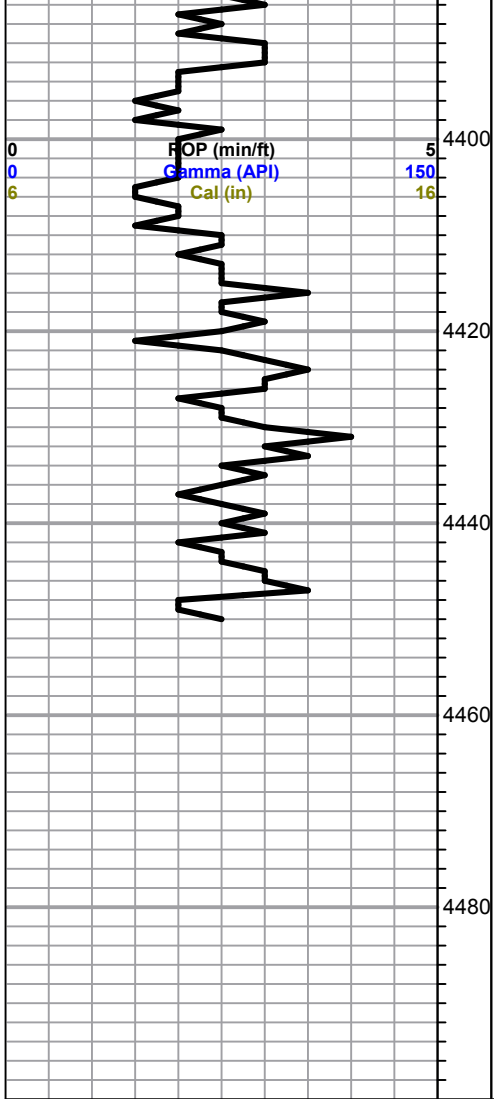
Ls-wht/crm, fxln, few ool, chalky, poor vis por,

Shale-gry/blk

Ls-tan/gry, fxln, few cherty, Trace FeS2

Grev limev shale





Grey limy shale

A/A

Conglomerate 4404.0 (-2074.0)

0.0

Trace wht/gry/amber cherty, weathered, semi trip, Scattered stains, TrSFO, faint odor

Trace sand, wht- very fine grained, shaley in part, glauc,

Sand-wht/clear, vfg sub round, friable in part, black dead stains, NSFo

A/A vc chert

A/A

Total Depth 4450.0 (-2120.0) 0.0

