

PHIL AKEY  
PETROLEUM GEOLOGIST  
GEOLOGIST'S REPORT  
DRILLING TIME AND SAMPLE LOG

COMPANY: Mull Drilling Company, Inc.  
LEASE: BVW #1-36  
FIELD: Wildcat  
LOCATION: 467 ENL & 1985' P.W.L.  
COUNTY: Edwards STATE: Kansas  
CONTRACTOR: Duke Drilling Rig #6  
CORNER: 2/28/14 COMP: 4/6/14  
RTO: 4710 LTD: 4712

DRILLING TIME KEPT FROM: 3500'  
GEOLOGICAL SUPERVISION FROM: 3750'  
GEOLOGIST ON WELL: Phil Akeley, R.G.

FORMATION TOPS  
Anhydrite 1386  
Lensing 1401  
Hushjuncy Sh. 1408  
Marmaton 1432  
Cherokee Sand 1510  
Mississippian 1584  
Kirtland 1710

FORMATION TOPS  
Lensing 1386  
Hushjuncy Sh. 1408  
Marmaton 1432  
Cherokee Sand 1510  
Mississippian 1584  
Kirtland 1710

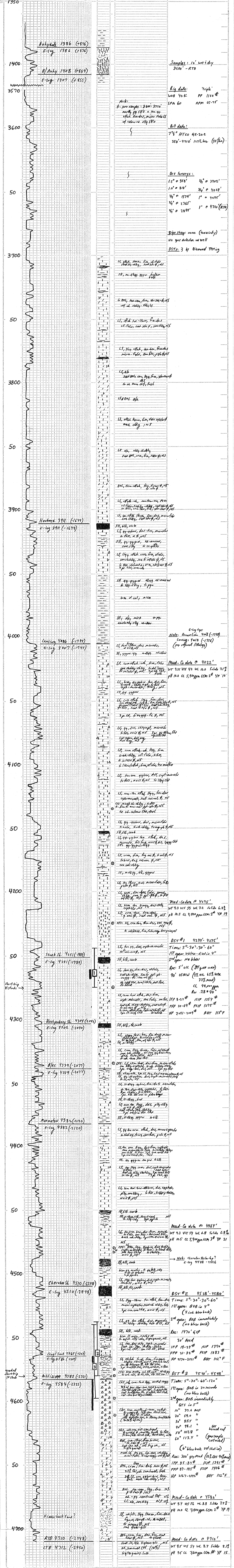
FORMATION TOPS  
Lensing 1386  
Hushjuncy Sh. 1408  
Marmaton 1432  
Cherokee Sand 1510  
Mississippian 1584  
Kirtland 1710

FORMATION TOPS  
Lensing 1386  
Hushjuncy Sh. 1408  
Marmaton 1432  
Cherokee Sand 1510  
Mississippian 1584  
Kirtland 1710

REMARKS  
The Mull Drilling Co., BVW#1-36 ran structureless, low to no reference well. Common Swath-located 2 miles to NE/northeast, the BVW#1-36 ran structurally high to the other reference well, cmx-bornholt #1, located 2 miles to the south-east.  
The positive sample shows in the Lansing K zone, 2 small Gogol sand zones, and a upper miss chert section were all DST with non commercial results.  
After review of the DST data and E-log, it was decided to plug and abandon the BVW#1-36.  
Phil Akeley, L.G.

LEGEND  
Anhydrite, Salt, Sandstone, Shale, Carb ch, Limestone, Ool. Limestone, Chert, Dolomite

SCALE 1" = 100'



COMPANY: Mull Drilling Company, Inc.  
LEASE: BVW #1-36  
LOCATION: 467 ENL & 1985' P.W.L. SEC 36 TWP 23 S RANG 20 W  
COUNTY: Edwards STATE: Kansas  
ELEVATION: 2262' KB