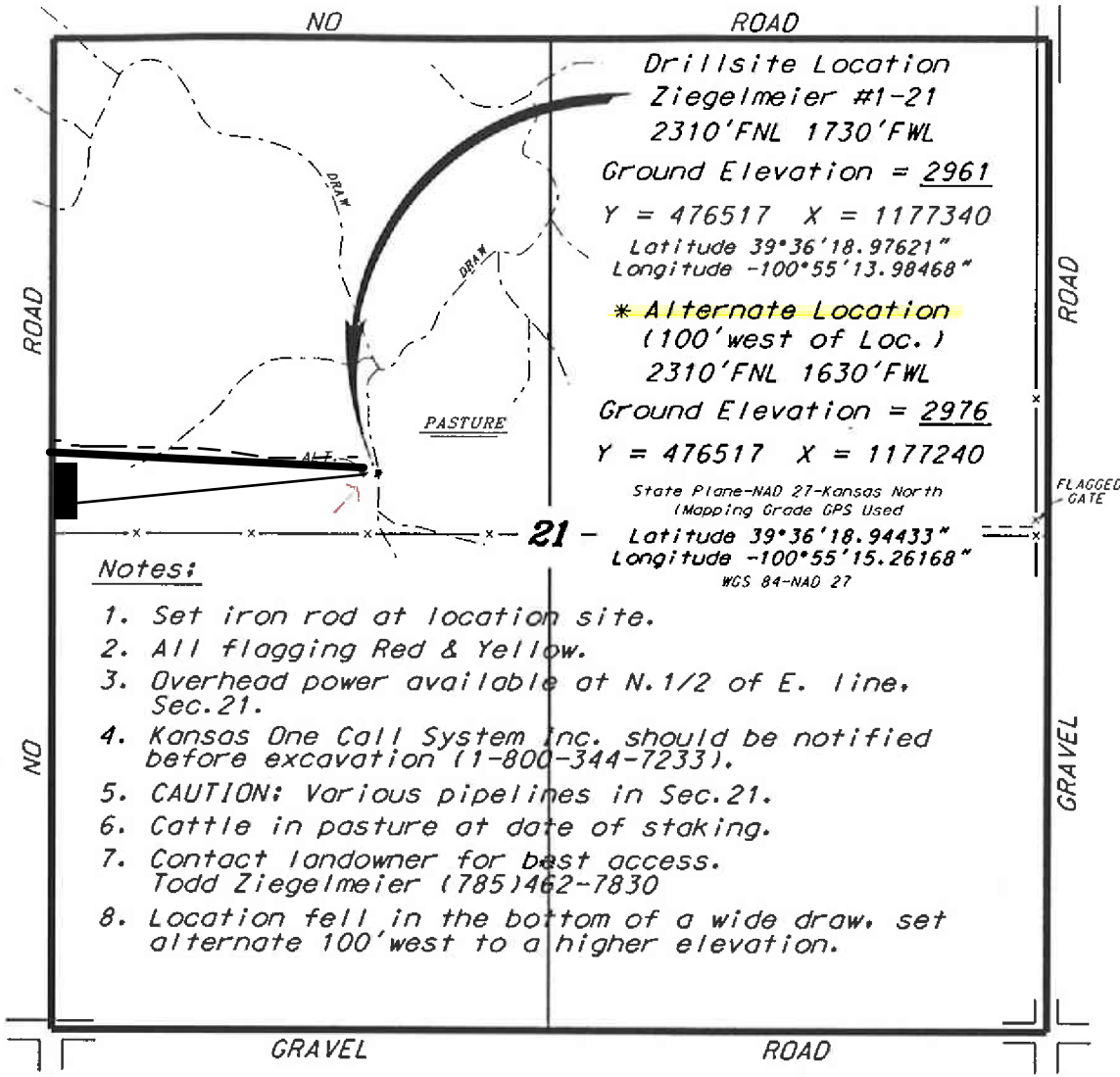


**L.D. DRILLING, INC.
ZIEGELMEIER LEASE
NW. 1/4, SECTION 21, T5S, R32W
RAWLINS COUNTY, KANSAS**

Directions:

From the intersection of Highway 36 and Highway 25 (in Atwood, Kansas) go 8.5 miles East on Highway 36, then go 15.0 miles South, then go 1.0 miles West to the SE. corner of Section 21, then go 0.56 miles North, then go 0.67 miles West to location.



Drillsite Location
Ziegelmeier #1-21
2310'FNL 1730'FWL
Ground Elevation = 2961
Y = 476517 X = 1177340
Latitude 39°36'18.97621"
Longitude -100°55'13.98468"

*** Alternate Location**
(100' west of Loc.)
2310'FNL 1630'FWL
Ground Elevation = 2976
Y = 476517 X = 1177240

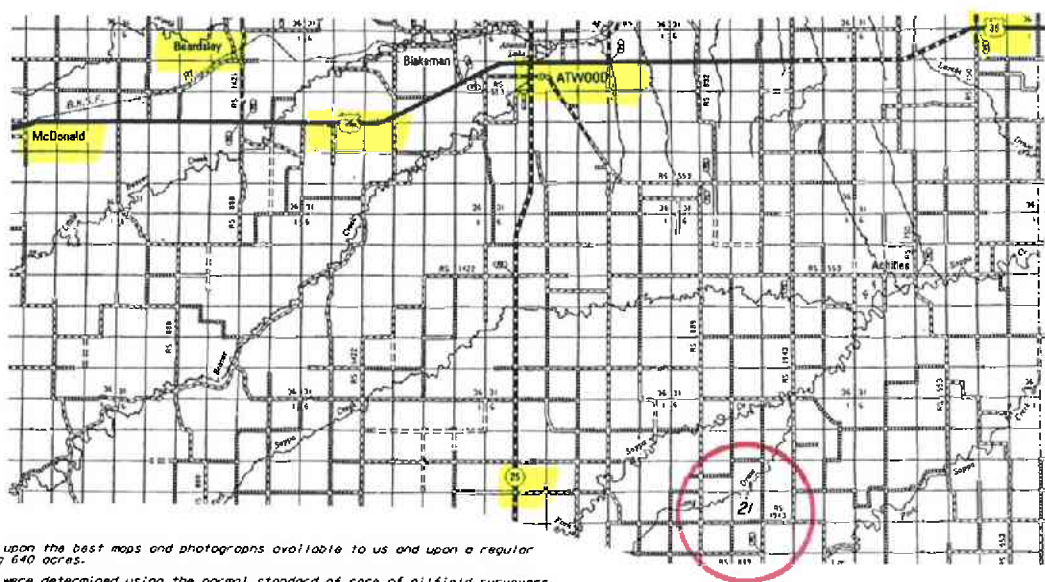
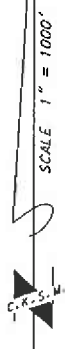
State Plane-NAD 27-Kansas North
(Mapping Grade GPS Used)

Latitude 39°36'18.94433"
Longitude -100°55'15.26168"
WGS 84-NAD 27

Notes:

1. Set iron rod at location site.
2. All flagging Red & Yellow.
3. Overhead power available at N. 1/2 of E. line, Sec. 21.
4. Kansas One Call System Inc. should be notified before excavation (1-800-344-7233).
5. CAUTION: Various pipelines in Sec. 21.
6. Cattle in pasture at date of staking.
7. Contact landowner for best access. Todd Ziegelmeier (785)462-7830
8. Location fell in the bottom of a wide draw, set alternate 100' west to a higher elevation.

* Ingress and egress to location as shown on this plot is per usage only and may not be legally opened for public use. Contact landowner, tenant and county road department for access.



Controlling data is based upon the best maps and photographs available to us and upon a regular section of land containing 640 acres.

Approximate section lines were determined using the normal standard of care of oilfield surveyors practicing in the state of Kansas. The section corners, which establish the precise section lines, were not necessarily located, and the exact location of the drillsite location in the section is not guaranteed. Therefore, the operator securing this service and accepting this plot and all other parties relying thereon agree to hold Central Kansas Oilfield Services, Inc., its officers and employees harmless from all losses, costs and expenses and said entities released from any liability from incidental or consequential damages.

Elevations derived from National Geodetic Vertical Datum.

Date July 1, 2014