



## DRILL STEM TEST REPORT

Prepared For: **Murfin Drilling Co., Inc.**

250 N Water STE 300  
Wichita, KS 67202

ATTN: Robert Hendrix

### **Solko Trust #1-25**

#### **25-4s-31w Rawlins,KS**

Start Date: 2014.03.18 @ 07:11:00

End Date: 2014.03.18 @ 15:47:00

Job Ticket #: 56367                      DST #: 1

Trilobite Testing, Inc  
PO Box 362 Hays, KS 67601  
ph: 785-625-4778 fax: 785-625-5620

Printed: 2014.03.25 @ 09:58:28



**TRILOBITE  
TESTING, INC**

# DRILL STEM TEST REPORT

Murfin Drilling Co., Inc.

**25-4s-31w Rawlins,KS**

250 N Water STE 300  
Wichita, KS 67202

**Solko Trust #1-25**

Job Ticket: 56367

**DST#: 1**

ATTN: Robert Hendrix

Test Start: 2014.03.18 @ 07:11:00

## GENERAL INFORMATION:

Formation: **Toronto - LKC " B "**

Deviated: No Whipstock: ft (KB)

Time Tool Opened: 09:28:45

Time Test Ended: 15:47:00

Test Type: Conventional Bottom Hole (Initial)

Tester: Samuel Esparza

Unit No: 71

**Interval: 3870.00 ft (KB) To 3955.00 ft (KB) (TVD)**

Reference Elevations: 2873.00 ft (KB)

Total Depth: 3955.00 ft (KB) (TVD)

2862.00 ft (CF)

Hole Diameter: 7.88 inches Hole Condition: Good

KB to GR/CF: 11.00 ft

**Serial #: 8845**

**Inside**

Press@RunDepth: 304.16 psig @ 3871.00 ft (KB)

Capacity: 8000.00 psig

Start Date: 2014.03.18

End Date:

2014.03.18

Last Calib.:

2014.03.18

Start Time: 07:11:05

End Time:

15:47:00

Time On Btm:

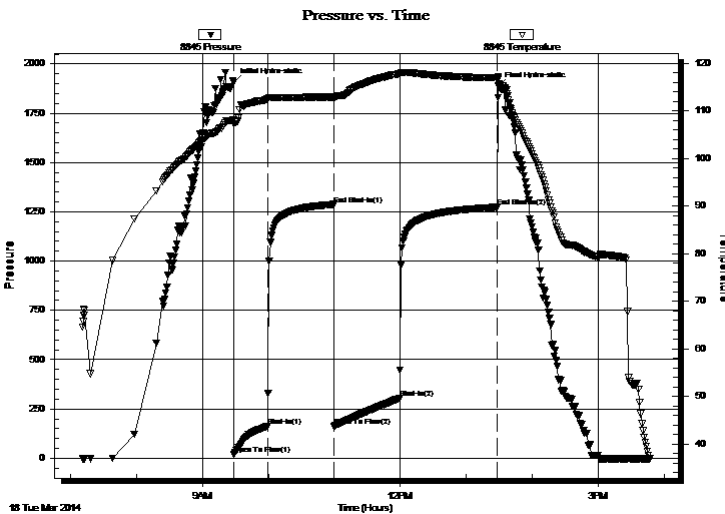
2014.03.18 @ 09:28:30

Time Off Btm:

2014.03.18 @ 13:29:00

TEST COMMENT: IF: BOB Blow @ 20 min.  
IS: No Return.  
FF: BOB Blow @ 22 min.  
FS: No Return.

## PRESSURE SUMMARY



Time (Min.)	Pressure (psig)	Temp (deg F)	Annotation
0	1906.35	108.12	Initial Hydro-static
1	20.99	107.23	Open To Flow (1)
31	163.01	112.49	Shut-In(1)
91	1287.44	112.87	End Shut-In(1)
92	163.13	112.56	Open To Flow (2)
151	304.16	117.78	Shut-In(2)
240	1273.38	116.92	End Shut-In(2)
241	1887.31	116.70	Final Hydro-static

## Recovery

Length (ft)	Description	Volume (bbl)
510.00	OMCW 5o 5m 90w	5.27
315.00	WOCM 20w 30o 50m	4.42
45.00	Oil	0.63

## Gas Rates

	Choke (inches)	Pressure (psig)	Gas Rate (Mcf/d)





**TRILOBITE  
TESTING, INC**

# DRILL STEM TEST REPORT

**TOOL DIAGRAM**

Murfin Drilling Co., Inc.

**25-4s-31w Rawlins,KS**

250 N Water STE 300  
Wichita, KS 67202

**Solko Trust #1-25**

Job Ticket: 56367

**DST#: 1**

ATTN: Robert Hendrix

Test Start: 2014.03.18 @ 07:11:00

## Tool Information

Drill Pipe:	Length: 3650.00 ft	Diameter: 3.80 inches	Volume: 51.20 bbl	Tool Weight: 2000.00 lb
Heavy Wt. Pipe:	Length: 0.00 ft	Diameter: 0.00 inches	Volume: 0.00 bbl	Weight set on Packer: 30000.00 lb
Drill Collar:	Length: 207.00 ft	Diameter: 2.25 inches	Volume: 1.02 bbl	Weight to Pull Loose: 85000.00 lb
			<u>Total Volume: 52.22 bbl</u>	Tool Chased 0.00 ft
Drill Pipe Above KB:	15.00 ft			String Weight: Initial 62000.00 lb
Depth to Top Packer:	3870.00 ft			Final 66000.00 lb
Depth to Bottom Packer:	ft			
Interval between Packers:	85.00 ft			
Tool Length:	113.00 ft			
Number of Packers:	2	Diameter: 6.75 inches		

Tool Comments:

Tool Description	Length (ft)	Serial No.	Position	Depth (ft)	Accum. Lengths
------------------	-------------	------------	----------	------------	----------------

Change Over Sub	1.00			3843.00	
Shut In Tool	5.00			3848.00	
Hydraulic tool	5.00			3853.00	
Jars	5.00			3858.00	
Safety Joint	3.00			3861.00	
Packer	5.00			3866.00	28.00 Bottom Of Top Packer
Packer	4.00			3870.00	
Stubb	1.00			3871.00	
Recorder	0.00	6772	Outside	3871.00	
Recorder	0.00	8845	Inside	3871.00	
Perforations	14.00			3885.00	
Change Over Sub	1.00			3886.00	
Drill Pipe	63.00			3949.00	
Change Over Sub	1.00			3950.00	
Bullnose	5.00			3955.00	85.00 Bottom Packers & Anchor

**Total Tool Length: 113.00**



**TRILOBITE  
TESTING, INC**

# DRILL STEM TEST REPORT

**FLUID SUMMARY**

Murfin Drilling Co., Inc.

**25-4s-31w Rawlins,KS**

250 N Water STE 300  
Wichita, KS 67202

**Solko Trust #1-25**

Job Ticket: 56367

**DST#: 1**

ATTN: Robert Hendrix

Test Start: 2014.03.18 @ 07:11:00

## Mud and Cushion Information

Mud Type: Gel Chem

Cushion Type:

Oil API:

28 deg API

Mud Weight: 9.00 lb/gal

Cushion Length:

ft

Water Salinity:

25000 ppm

Viscosity: 51.00 sec/qt

Cushion Volume:

bbbl

Water Loss: 5.19 in<sup>3</sup>

Gas Cushion Type:

Resistivity: 0.00 ohm.m

Gas Cushion Pressure:

psig

Salinity: 800.00 ppm

Filter Cake: 2.00 inches

## Recovery Information

Recovery Table

Length ft	Description	Volume bbl
510.00	OMCW 5o 5m 90w	5.268
315.00	WOCM 20w 30o 50m	4.419
45.00	Oil	0.631

Total Length: 870.00 ft      Total Volume: 10.318 bbl

Num Fluid Samples: 0

Num Gas Bombs: 0

Serial #:

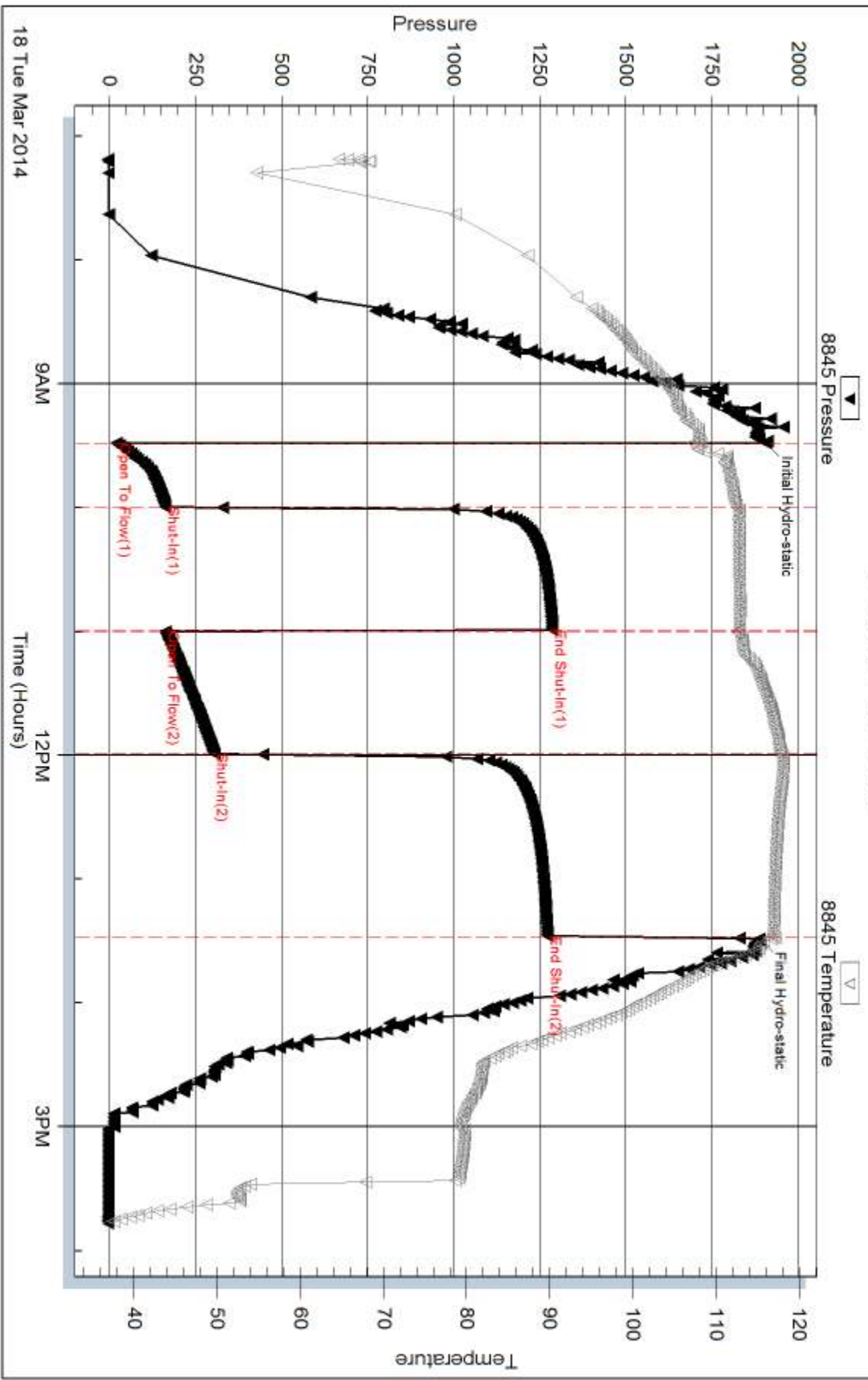
Laboratory Name:

Laboratory Location:

Recovery Comments: Gravity: 26 @ 40 degrees= 28 deg API

Water Salinity: .522 @ 36 degrees= 25,000 ppm

### Pressure vs. Time

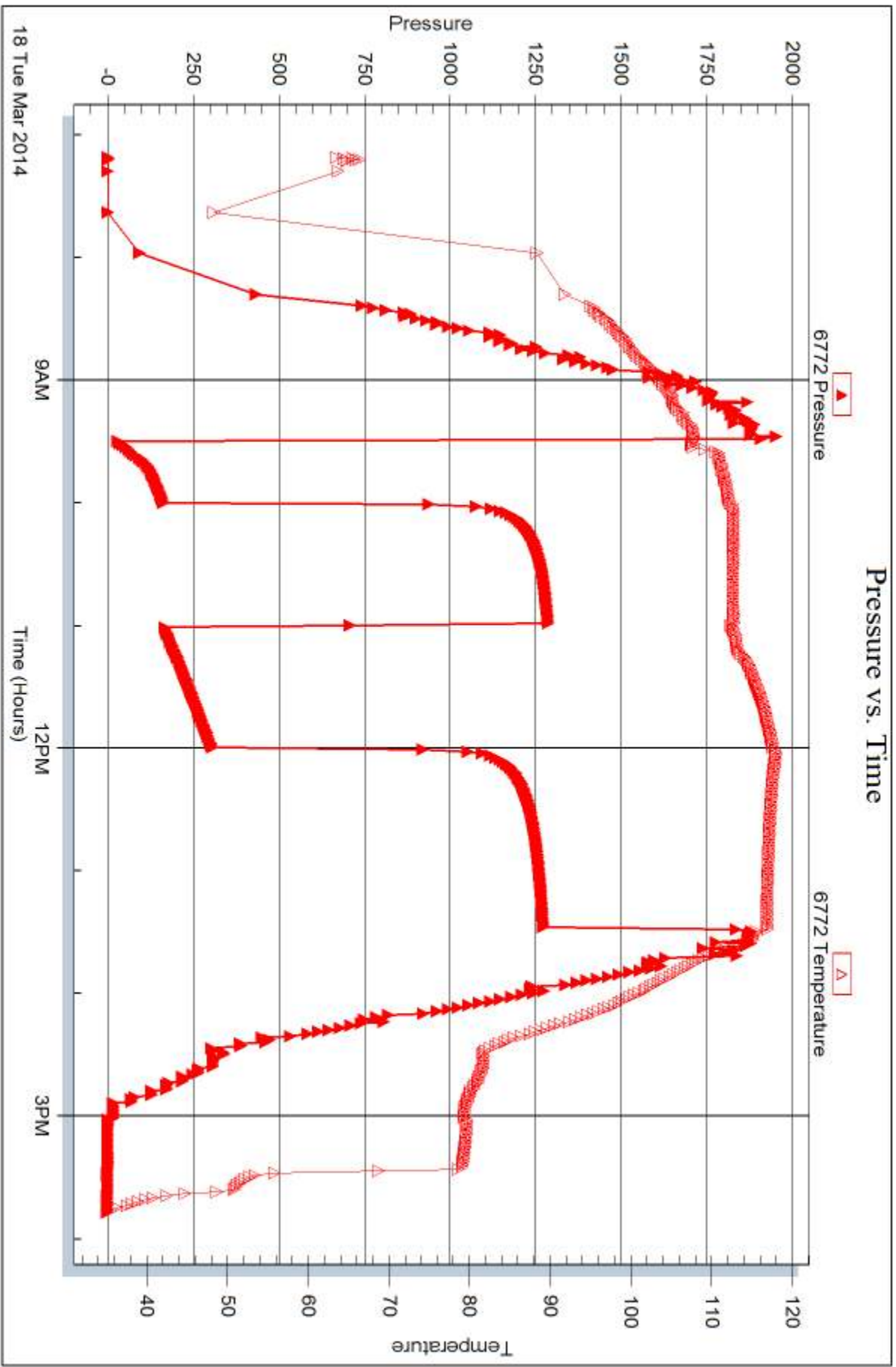


Serial #: 6772

Outside Murfin Drilling Co., Inc.

Solko Trust#1-25

DST Test Number: 1





## DRILL STEM TEST REPORT

Prepared For: **Murfin Drilling Co., Inc.**

250 N Water STE 300  
Wichita, KS 67202

ATTN: Robert Hendrix

### **Solko Trust #1-25**

#### **25-4s-31w Rawlins,KS**

Start Date: 2014.03.19 @ 03:20:00

End Date: 2014.03.19 @ 09:51:00

Job Ticket #: 56368                      DST #: 2

Trilobite Testing, Inc  
PO Box 362 Hays, KS 67601  
ph: 785-625-4778 fax: 785-625-5620

Printed: 2014.03.25 @ 09:58:02





**TRILOBITE TESTING, INC.**

# DRILL STEM TEST REPORT

Murfin Drilling Co., Inc.

**25-4s-31w Rawlins,KS**

250 N Water STE 300  
Wichita, KS 67202

**Solko Trust #1-25**

Job Ticket: 56368

**DST#: 2**

ATTN: Robert Hendrix

Test Start: 2014.03.19 @ 03:20:00

## GENERAL INFORMATION:

Formation: **LKC "E-F"**

Deviated: No Whipstock: ft (KB)

Time Tool Opened: 05:14:00

Time Test Ended: 09:51:00

Test Type: Conventional Bottom Hole (Reset)

Tester: Samuel Esparza

Unit No: 71

**Interval: 3971.00 ft (KB) To 4001.00 ft (KB) (TVD)**

Reference Elevations: 2873.00 ft (KB)

Total Depth: 4001.00 ft (KB) (TVD)

2862.00 ft (CF)

Hole Diameter: 7.88 inches Hole Condition: Good

KB to GR/CF: 11.00 ft

**Serial #: 8845 Outside**

Press@RunDepth: 32.88 psig @ 3972.00 ft (KB)

Capacity: 8000.00 psig

Start Date: 2014.03.19

End Date:

2014.03.19

Last Calib.:

2014.03.19

Start Time: 03:20:05

End Time:

09:50:59

Time On Btm:

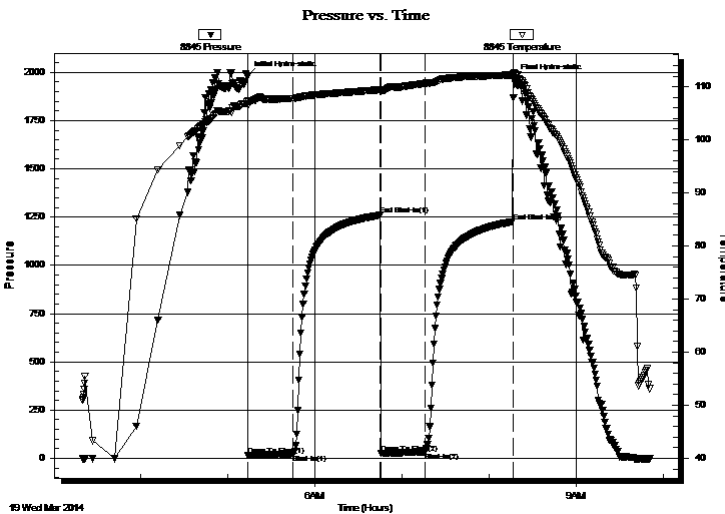
2014.03.19 @ 05:13:45

Time Off Btm:

2014.03.19 @ 08:17:15

TEST COMMENT: IF: 1" Blow.  
IS: NO Return.  
FF: No Blow.  
FS: No Return.

## PRESSURE SUMMARY



Time (Min.)	Pressure (psig)	Temp (deg F)	Annotation
0	1981.47	107.26	Initial Hydro-static
1	14.57	106.52	Open To Flow (1)
32	23.27	107.80	Shut-In(1)
92	1259.78	109.42	End Shut-In(1)
92	25.48	109.07	Open To Flow (2)
122	32.88	110.63	Shut-In(2)
183	1226.54	112.21	End Shut-In(2)
184	1969.70	112.70	Final Hydro-static

## Recovery

Length (ft)	Description	Volume (bbl)
10.00	Mud 100m ( Oil Spots )	0.05

\* Recovery from multiple tests

## Gas Rates

	Choke (inches)	Pressure (psig)	Gas Rate (Mcf/d)





**TRILOBITE  
TESTING, INC**

# DRILL STEM TEST REPORT

**TOOL DIAGRAM**

Murfin Drilling Co., Inc.

**25-4s-31w Rawlins,KS**

250 N Water STE 300  
Wichita, KS 67202

**Solko Trust #1-25**

Job Ticket: 56368

**DST#: 2**

ATTN: Robert Hendrix

Test Start: 2014.03.19 @ 03:20:00

## Tool Information

Drill Pipe:	Length: 3751.00 ft	Diameter: 3.80 inches	Volume: 52.62 bbl	Tool Weight: 2000.00 lb
Heavy Wt. Pipe:	Length: 0.00 ft	Diameter: 0.00 inches	Volume: 0.00 bbl	Weight set on Packer: 30000.00 lb
Drill Collar:	Length: 207.00 ft	Diameter: 2.25 inches	Volume: 1.02 bbl	Weight to Pull Loose: 75000.00 lb
			<u>Total Volume: 53.64 bbl</u>	Tool Chased 0.00 ft
Drill Pipe Above KB:	15.00 ft			String Weight: Initial 63000.00 lb
Depth to Top Packer:	3971.00 ft			Final 63000.00 lb
Depth to Bottom Packer:	ft			
Interval between Packers:	30.00 ft			
Tool Length:	58.00 ft			
Number of Packers:	2	Diameter: 6.75 inches		

Tool Comments:

## Tool Description

Tool Description	Length (ft)	Serial No.	Position	Depth (ft)	Accum. Lengths
Change Over Sub	1.00			3944.00	
Shut In Tool	5.00			3949.00	
Hydraulic tool	5.00			3954.00	
Jars	5.00			3959.00	
Safety Joint	3.00			3962.00	
Packer	5.00			3967.00	28.00 Bottom Of Top Packer
Packer	4.00			3971.00	
Stubb	1.00			3972.00	
Recorder	0.00	6772	Outside	3972.00	
Recorder	0.00	8845	Outside	3972.00	
Perforations	24.00			3996.00	
Bullnose	5.00			4001.00	30.00 Bottom Packers & Anchor

**Total Tool Length: 58.00**



**TRILOBITE  
TESTING, INC**

# DRILL STEM TEST REPORT

**FLUID SUMMARY**

Murfin Drilling Co., Inc.

**25-4s-31w Rawlins,KS**

250 N Water STE 300  
Wichita, KS 67202

**Solko Trust #1-25**

Job Ticket: 56368

**DST#: 2**

ATTN: Robert Hendrix

Test Start: 2014.03.19 @ 03:20:00

## Mud and Cushion Information

Mud Type: Gel Chem

Cushion Type:

Oil API:

deg API

Mud Weight: 9.00 lb/gal

Cushion Length:

ft

Water Salinity:

ppm

Viscosity: 60.00 sec/qt

Cushion Volume:

bbbl

Water Loss: 5.59 in<sup>3</sup>

Gas Cushion Type:

Resistivity: 0.00 ohm.m

Gas Cushion Pressure:

psig

Salinity: 800.00 ppm

Filter Cake: 2.00 inches

## Recovery Information

Recovery Table

Length ft	Description	Volume bbl
10.00	Mud 100m ( Oil Spots )	0.049

Total Length: 10.00 ft      Total Volume: 0.049 bbl

Num Fluid Samples: 0

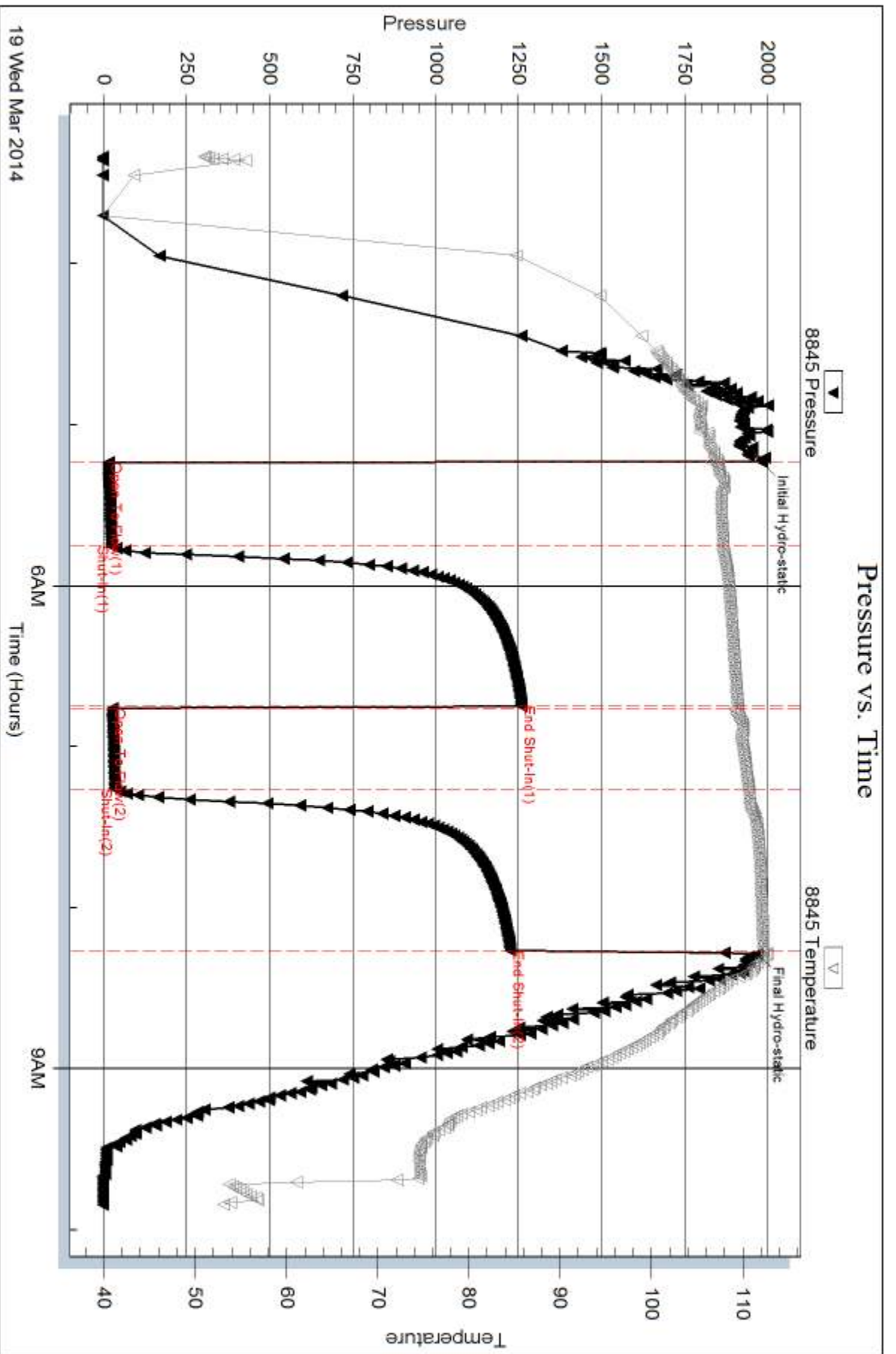
Num Gas Bombs: 0

Serial #:

Laboratory Name:

Laboratory Location:

Recovery Comments:

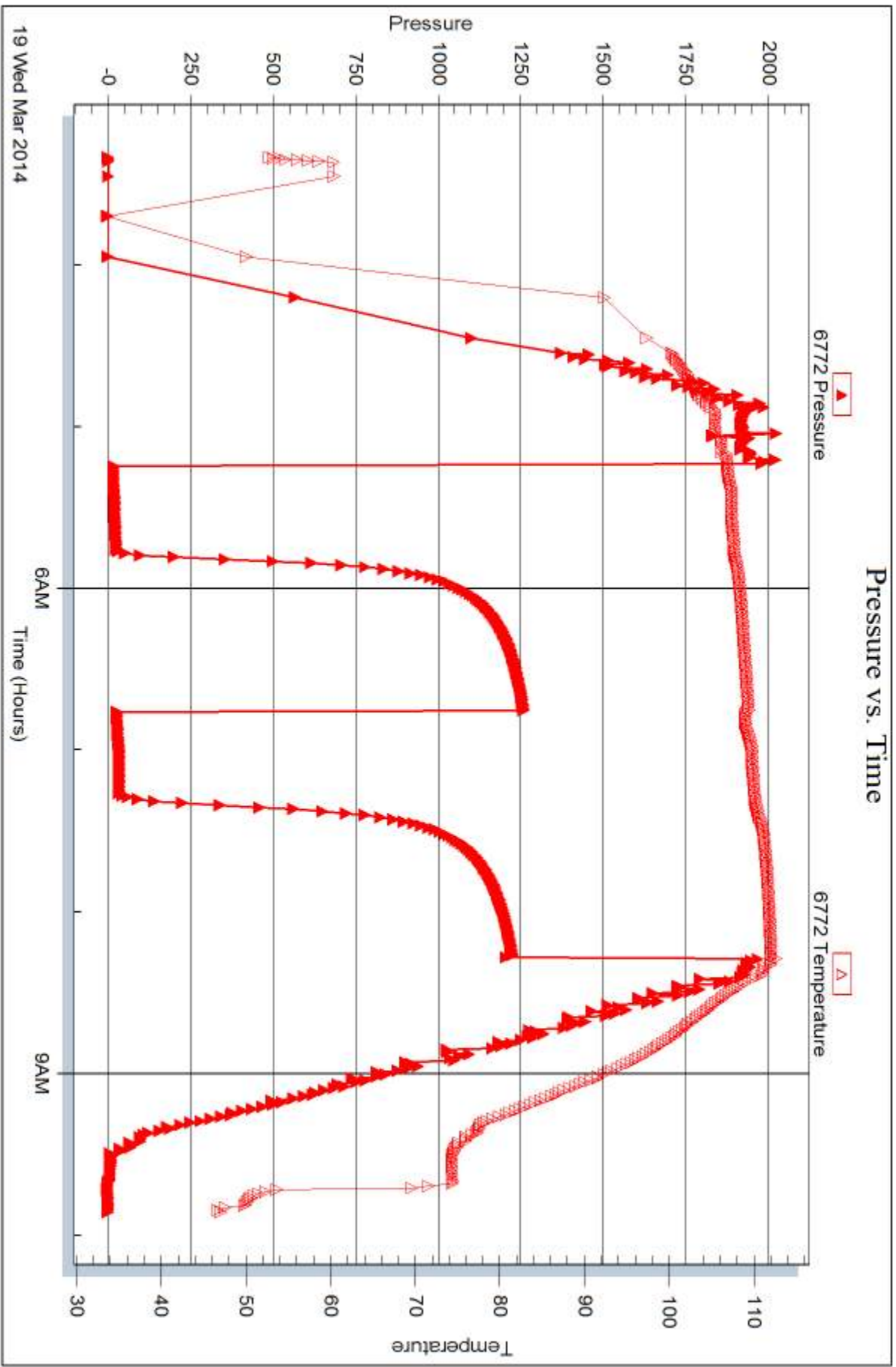


Serial #: 6772

Outside Murfin Drilling Co., Inc.

Solko Trust#1-25

DST Test Number: 2



Trilobite Testing, Inc

Ref. No: 56368

Printed: 2014.03.25 @ 09:58:05



## DRILL STEM TEST REPORT

Prepared For: **Murfin Drilling Co., Inc.**

250 N Water STE 300  
Wichita, KS 67202

ATTN: Robert Hendrix

### **Solko Trust #1-25**

#### **25-4s-31w Rawlins,KS**

Start Date: 2014.03.20 @ 02:36:00

End Date: 2014.03.20 @ 10:38:00

Job Ticket #: 56369                      DST #: 3

Trilobite Testing, Inc  
PO Box 362 Hays, KS 67601  
ph: 785-625-4778 fax: 785-625-5620

Printed: 2014.03.25 @ 09:57:27



**TRILOBITE TESTING, INC.**

# DRILL STEM TEST REPORT

Murfin Drilling Co., Inc.

**25-4s-31w Rawlins,KS**

250 N Water STE 300  
Wichita, KS 67202

**Solko Trust #1-25**

Job Ticket: 56369

**DST#: 3**

ATTN: Robert Hendrix

Test Start: 2014.03.20 @ 02:36:00

## GENERAL INFORMATION:

Formation: **LKC "H - K"**

Deviated: No Whipstock: ft (KB)

Time Tool Opened: 04:25:30

Time Test Ended: 10:38:00

Test Type: Conventional Bottom Hole (Reset)

Tester: Samuel Esparza

Unit No: 71

**Interval: 4014.00 ft (KB) To 4114.00 ft (KB) (TVD)**

Reference Elevations: 2873.00 ft (KB)

Total Depth: 4114.00 ft (KB) (TVD)

2862.00 ft (CF)

Hole Diameter: 7.88 inches Hole Condition: Good

KB to GR/CF: 11.00 ft

**Serial #: 8845**

**Inside**

Press@RunDepth: 190.35 psig @ 4015.00 ft (KB)

Capacity: 8000.00 psig

Start Date: 2014.03.20

End Date:

2014.03.20

Last Calib.:

2014.03.20

Start Time: 02:36:05

End Time:

10:37:59

Time On Btm:

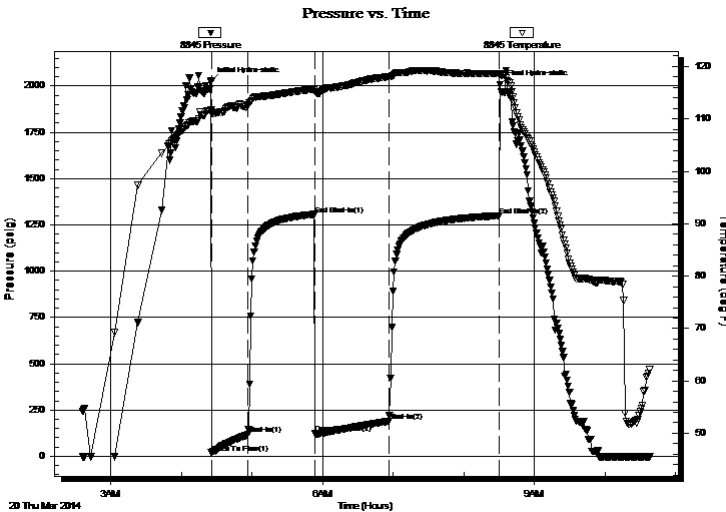
2014.03.20 @ 04:25:15

Time Off Btm:

2014.03.20 @ 08:30:45

TEST COMMENT: IF: BOB @ 26 min.  
IS: No Return.  
FF: BOB @ 29 min.  
FS: 3/4" Return.

## PRESSURE SUMMARY



Time (Min.)	Pressure (psig)	Temp (deg F)	Annotation
0	2025.57	111.81	Initial Hydro-static
1	18.83	110.95	Open To Flow (1)
32	118.66	112.59	Shut-In(1)
88	1306.97	115.68	End Shut-In(1)
89	122.87	115.16	Open To Flow (2)
152	190.35	118.04	Shut-In(2)
245	1299.79	118.63	End Shut-In(2)
246	2007.88	118.56	Final Hydro-static

## Recovery

Length (ft)	Description	Volume (bbl)
250.00	OMCW 10o 20m 70w	1.62
165.00	OCM 20o 80m	2.31
30.00	Oil 100o	0.42

\* Recovery from multiple tests

## Gas Rates

	Choke (inches)	Pressure (psig)	Gas Rate (Mcf/d)







**TRILOBITE  
TESTING, INC**

# DRILL STEM TEST REPORT

**TOOL DIAGRAM**

Murfin Drilling Co., Inc.

**25-4s-31w Rawlins,KS**

250 N Water STE 300  
Wichita, KS 67202

**Solko Trust #1-25**

Job Ticket: 56369

**DST#: 3**

ATTN: Robert Hendrix

Test Start: 2014.03.20 @ 02:36:00

## Tool Information

Drill Pipe:	Length: 3810.00 ft	Diameter: 3.80 inches	Volume: 53.44 bbl	Tool Weight: 2000.00 lb
Heavy Wt. Pipe:	Length: 0.00 ft	Diameter: 0.00 inches	Volume: 0.00 bbl	Weight set on Packer: 30000.00 lb
Drill Collar:	Length: 207.00 ft	Diameter: 2.25 inches	Volume: 1.02 bbl	Weight to Pull Loose: 85000.00 lb
			<u>Total Volume: 54.46 bbl</u>	Tool Chased 0.00 ft
Drill Pipe Above KB:	31.00 ft			String Weight: Initial 64000.00 lb
Depth to Top Packer:	4014.00 ft			Final 68000.00 lb
Depth to Bottom Packer:	ft			
Interval between Packers:	100.00 ft			
Tool Length:	128.00 ft			
Number of Packers:	2	Diameter: 6.75 inches		

Tool Comments:

## Tool Description

Tool Description	Length (ft)	Serial No.	Position	Depth (ft)	Accum. Lengths
Change Over Sub	1.00			3987.00	
Shut In Tool	5.00			3992.00	
Hydraulic tool	5.00			3997.00	
Jars	5.00			4002.00	
Safety Joint	3.00			4005.00	
Packer	5.00			4010.00	28.00 Bottom Of Top Packer
Packer	4.00			4014.00	
Stubb	1.00			4015.00	
Recorder	0.00	6772	Outside	4015.00	
Recorder	0.00	8845	Inside	4015.00	
Perforations	29.00			4044.00	
Change Over Sub	1.00			4045.00	
Drill Pipe	63.00			4108.00	
Change Over Sub	1.00			4109.00	
Bullnose	5.00			4114.00	100.00 Bottom Packers & Anchor

**Total Tool Length: 128.00**



**TRILOBITE  
TESTING, INC**

# DRILL STEM TEST REPORT

**FLUID SUMMARY**

Murfin Drilling Co., Inc.

**25-4s-31w Rawlins,KS**

250 N Water STE 300  
Wichita, KS 67202

**Solko Trust #1-25**

Job Ticket: 56369

**DST#: 3**

ATTN: Robert Hendrix

Test Start: 2014.03.20 @ 02:36:00

## Mud and Cushion Information

Mud Type: Gel Chem  
Mud Weight: 9.00 lb/gal  
Viscosity: 64.00 sec/qt  
Water Loss: 5.59 in<sup>3</sup>  
Resistivity: 0.00 ohm.m  
Salinity: 1200.00 ppm  
Filter Cake: 2.00 inches

Cushion Type:  
Cushion Length: ft  
Cushion Volume: bbl  
Gas Cushion Type:  
Gas Cushion Pressure: psig

Oil API: 27 deg API  
Water Salinity: 46000 ppm

## Recovery Information

Recovery Table

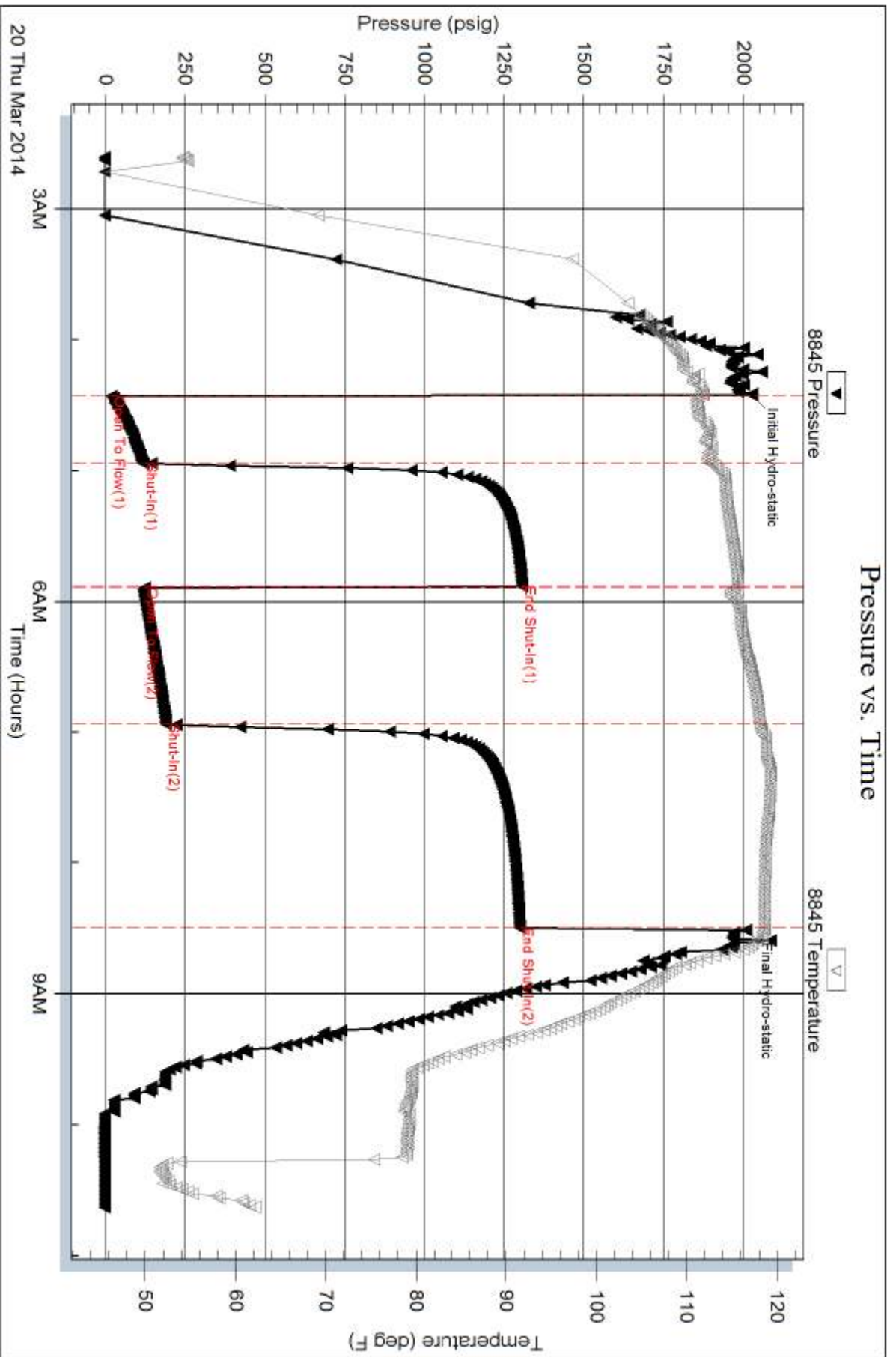
Length ft	Description	Volume bbl
250.00	OMCW 10o 20m 70w	1.621
165.00	OCM 20o 80m	2.315
30.00	Oil 100o	0.421

Total Length: 445.00 ft      Total Volume: 4.357 bbl

Num Fluid Samples: 0      Num Gas Bombs: 0      Serial #:

Laboratory Name:      Laboratory Location:

Recovery Comments: Oil API: 26 @ 50 degrees= 27 deg API  
Water Salinity: .202 @ 49 degrees= 46,000 ppm

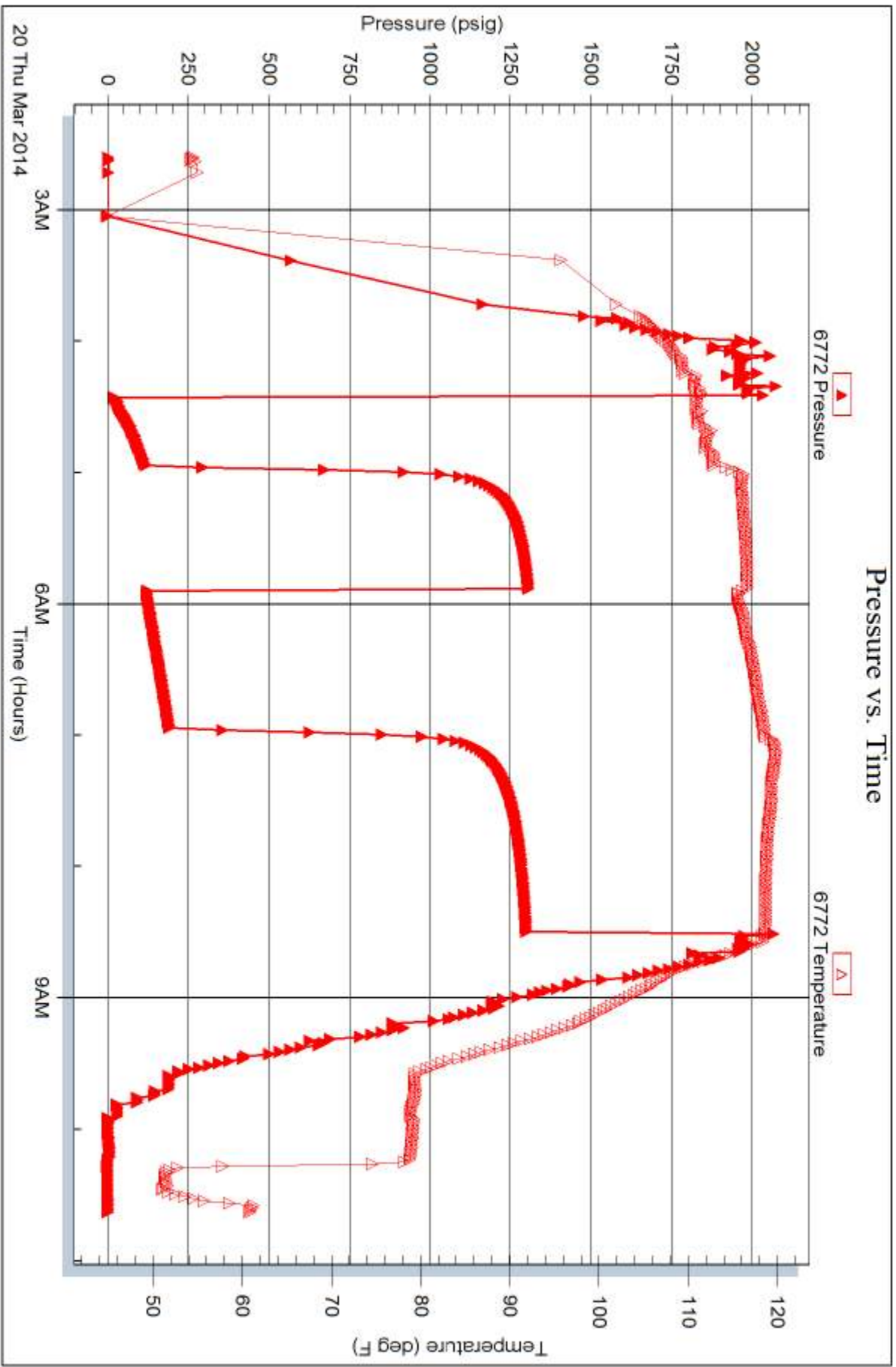


Serial #: 6772

Outside Murfin Drilling Co., Inc.

Solko Trust#1-25

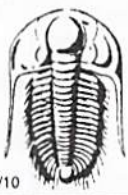
DST Test Number: 3



Tribble Testing, Inc

Ref. No: 56369

Printed: 2014.03.25 @ 09:57:29



# TRILOBITE TESTING INC.

1515 Commerce Parkway • Hays, Kansas 67601

## Test Ticket

NO. 56367

Well Name & No. Solko Trust #1-25 Test No. 1 Date 3/18/14  
 Company Murfin Drilling Co., Inc. Elevation 2873 KB 2862 GL  
 Address 250 N Water STE 300 Wichita, KS 67202  
 Co. Rep / Geo. Robert Hendrix Rig Murfin #2  
 Location: Sec. 25 Twp. 4S Rge. 31W Co. Rawlins State KS

Interval Tested 3870-3955 Zone Tested Toronto - Lansing "B"  
 Anchor Length 85' Drill Pipe Run 3650 Mud Wt. 9.1  
 Top Packer Depth 3866 Drill Collars Run 207 Vis 51  
 Bottom Packer Depth 3870 Wt. Pipe Run Ø WL 5.2  
 Total Depth 3955 Chlorides 800 ppm System LCM 4

Blow Description IF: BOB Blow @ 20 min.  
ISI: NO Return.  
FF: BOB Blow @ 22 min.  
ISI NO Return

Rec	Feet of	%gas	%oil	%water	%mud
<u>45</u>	<u>oil</u>		<u>100</u>		
<u>315</u>	<u>WOCM</u>	<u>30</u>	<u>20</u>	<u>50</u>	
<u>510</u>	<u>OMCW</u>	<u>5</u>	<u>90</u>	<u>5</u>	
Rec	Feet of	%gas	%oil	%water	%mud
Rec	Feet of	%gas	%oil	%water	%mud

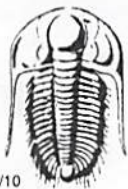
Rec Total 870 BHT 117 Gravity 28 API RW .522 @ 36 °F Chlorides 25,000 ppm

(A) Initial Hydrostatic 1906  Test 1150 T-On Location 6:15  
 (B) First Initial Flow 21  Jars 250 T-Started 7:11  
 (C) First Final Flow 163  Safety Joint 75 T-Open 9:29  
 (D) Initial Shut-In 1287  Circ Sub N/C T-Pulled ~~12:50~~ 13:32  
 (E) Second Initial Flow 163  Hourly Standby \_\_\_\_\_ T-Out 15:47  
 (F) Second Final Flow 304  Mileage 192 R/T 42rt 65.10 Comments Gravity: 26 @ 40 = 28  
 (G) Final Shut-In 1273  Sampler \_\_\_\_\_ Stayed in Hotel in Oberlin  
 (H) Final Hydrostatic 1887  Straddle \_\_\_\_\_  Ruined Shale Packer \_\_\_\_\_  
 Shale Packer \_\_\_\_\_  Ruined Packer \_\_\_\_\_  
 Extra Packer \_\_\_\_\_  Extra Copies \_\_\_\_\_

Initial Open 30  Extra Recorder \_\_\_\_\_ Sub Total 0  
 Initial Shut-In 60  Day Standby \_\_\_\_\_ Total 1540.10  
 Final Flow 60  Accessibility \_\_\_\_\_ MP/DST Disc't \_\_\_\_\_  
 Final Shut-In 90 Sub Total 1540.10

Approved By [Signature] Our Representative [Signature]

TriLOBITE TESTING Inc. shall not be liable for damaged of any kind of the property or personnel of the one for whom a test is made, or for any loss suffered or sustained, directly or indirectly, through the use of its equipment, or its statements or opinion concerning the results of any test, tools lost or damaged in the hole shall be paid for at cost by the party for whom the test is made.



# TRILOBITE TESTING INC.

1515 Commerce Parkway • Hays, Kansas 67601

## Test Ticket

NO. **56368**

Well Name & No. Solko Trust #1-25 Test No. 2 Date 3/19/14  
 Company Murfin Drilling Co., Inc. Elevation 2873 KB 2862 GL  
 Address 250 N Water St E 300 Wichita, KS 67202  
 Co. Rep / Geo. ~~Robert Hendrix~~ Robert Hendrix Rig Murfin #2  
 Location: Sec. 25 Twp. 4S Rge. 3W Co. Rawlins State KS

Interval Tested 3971-4001 Zone Tested Lansing "E-F"  
 Anchor Length 30 Drill Pipe Run 3751 Mud Wt. 9.2  
 Top Packer Depth 3967 Drill Collars Run 207 Vis 60  
 Bottom Packer Depth 3971 Wt. Pipe Run Ø WL 5.6  
 Total Depth 4001 Chlorides 800 ppm System LCM 4

Blow Description IF: 1" Blow.  
IST: NO Return.  
FF: NO Blow  
EST: NO Return.

Rec	Feet of	%gas	%oil	%water	%mud
<u>10</u>	<u>Mud (oil spots)</u>				
Rec	Feet of	%gas	%oil	%water	%mud
Rec	Feet of	%gas	%oil	%water	%mud
Rec	Feet of	%gas	%oil	%water	%mud
Rec	Feet of	%gas	%oil	%water	%mud

Rec Total 10 BHT 112 Gravity — API RW — @ — °F Chlorides — ppm

(A) Initial Hydrostatic <u>1981</u>	<input checked="" type="checkbox"/> Test <u>1250</u>	T-On Location <u>300</u>
(B) First Initial Flow <u>15</u>	<input checked="" type="checkbox"/> Jars <u>250</u>	T-Started <u>320</u>
(C) First Final Flow <u>23</u>	<input checked="" type="checkbox"/> Safety Joint <u>75</u>	T-Open <u>514</u>
(D) Initial Shut-In <u>1260</u>	<input checked="" type="checkbox"/> Circ Sub <u>N/C</u>	T-Pulled <u>8:16</u>
(E) Second Initial Flow <u>25</u>	<input type="checkbox"/> Hourly Standby	T-Out <u>9:51</u>
(F) Second Final Flow <u>33</u>	<input checked="" type="checkbox"/> Mileage <u>192 RTT</u> <u>65.10</u>	Comments <u>Stayed in metal in Oberlin</u>
(G) Final Shut-In <u>1227</u>	<input type="checkbox"/> Sampler	
(H) Final Hydrostatic <u>1970</u>	<input type="checkbox"/> Straddle	<input type="checkbox"/> Ruined Shale Packer
Initial Open <u>30</u>	<input type="checkbox"/> Shale Packer	<input type="checkbox"/> Ruined Packer
Initial Shut-In <u>60</u>	<input type="checkbox"/> Extra Packer	<input type="checkbox"/> Extra Copies
Final Flow <u>30</u>	<input type="checkbox"/> Extra Recorder	Sub Total <u>0</u>
Final Shut-In <u>60</u>	<input type="checkbox"/> Day Standby	Total <u>1640.10</u>
	<input type="checkbox"/> Accessibility	MP/DST Disc't
	Sub Total <u>1640.10</u>	

Approved By [Signature] Our Representative [Signature]

Trilobite Testing Inc. shall not be liable for damaged of any kind of the property or personnel of the one for whom a test is made, or for any loss suffered or sustained, directly or indirectly, through the use of its equipment, or its statements or opinion concerning the results of any test, tools lost or damaged in the hole shall be paid for at cost by the party for whom the test is made.



# TRILOBITE TESTING INC.

1515 Commerce Parkway • Hays, Kansas 67601

## Test Ticket

NO. **56369**

Well Name & No. S&K0 Trust #1-25 Test No. 3 Date 3/20/14  
 Company Murphy Drilling Co., Inc. Elevation 2873 KB 2862 GL  
 Address 250 N Water STE 300 Wichita, KS 67202  
 Co. Rep / Geo. Robert Hedrick Rig Murphy #2  
 Location: Sec. 25 Twp. 4S Rge. 31W Co. Rawlins State KS

Interval Tested 4014-4114 Zone Tested Logging "H-J-K"  
 Anchor Length 100' Drill Pipe Run 3810 Mud Wt. 9.2  
 Top Packer Depth 4010 Drill Collars Run 207 Vis 64  
 Bottom Packer Depth 4014 Wt. Pipe Run Ø WL 5.6  
 Total Depth 4114 Chlorides 1200 ppm System LCM 5  
 Blow Description IF: BOB 26 min.  
ISF: No Return.  
FF: BOB 29 min  
FSD: 3/4" Return.

Rec	Feet of	%gas	%oil	%water	%mud
<u>30</u>	<u>Oil</u>	<u>100</u>			
<u>165</u>	<u>OCM</u>	<u>20</u>		<u>80</u>	
<u>250</u>	<u>OMCW</u>	<u>10</u>		<u>70</u>	<u>20</u>
Rec	Feet of	%gas	%oil	%water	%mud
Rec	Feet of	%gas	%oil	%water	%mud

Rec Total 445 BHT 119 Gravity 27 API RW 202 @ 49 °F Chlorides 46,000 ppm  
 (A) Initial Hydrostatic 2026  Test 1250 T-On Location 215  
 (B) First Initial Flow 19  Jars 250 T-Started 236  
 (C) First Final Flow 119  Safety Joint 75 T-Open 426  
 (D) Initial Shut-In 1307  Circ Sub N/C T-Pulled 8:28  
 (E) Second Initial Flow 123  Hourly Standby \_\_\_\_\_ T-Out 10:38  
 (F) Second Final Flow 190  Mileage 192 RT 65.10 Comments Loaded tools  
 (G) Final Shut-In 1300  Sampler \_\_\_\_\_  
 (H) Final Hydrostatic 2008  Straddle \_\_\_\_\_  
 Initial Open 30  Shale Packer \_\_\_\_\_  
 Initial Shut-In 60  Extra Packer \_\_\_\_\_  
 Final Flow 60  Extra Recorder \_\_\_\_\_  
 Final Shut-In 90  Day Standby \_\_\_\_\_  
 Accessibility \_\_\_\_\_  
 Sub Total 1640.10

Approved By RLD/Hij Our Representative [Signature]

Trilobite Testing Inc. shall not be liable for damaged of any kind of the property or personnel of the one for whom a test is made, or for any loss suffered or sustained, directly or indirectly, through the use of its equipment, or its statements or opinion concerning the results of any test, tools lost or damaged in the hole shall be paid for at cost by the party for whom the test is made.