

# ADVANTAGE ELEVATIONS

OIL FIELD SURVEYORS

BOX 8604 - PRATT, KS 67124  
(620) 672-6491

629143

INVOICE NO.

R & B OIL & GAS

OPERATOR

2

NO.

CHAIN

FARM

Barber

COUNTY

31

S

30s

T

11w

R

C SW SW

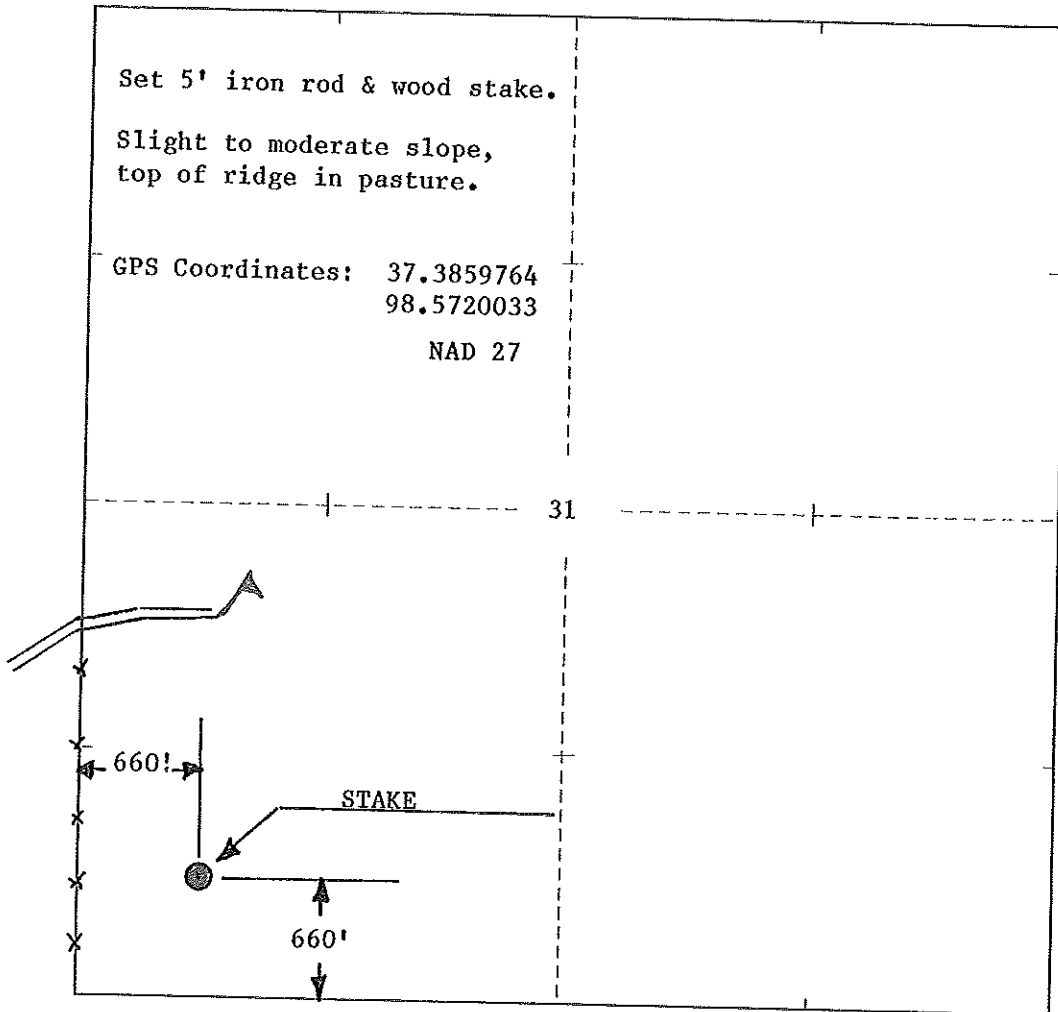
LOCATION

ELEVATION: 1748' GR

R & B OIL & GAS  
P O Box 195  
Attica, KS 67009-0195

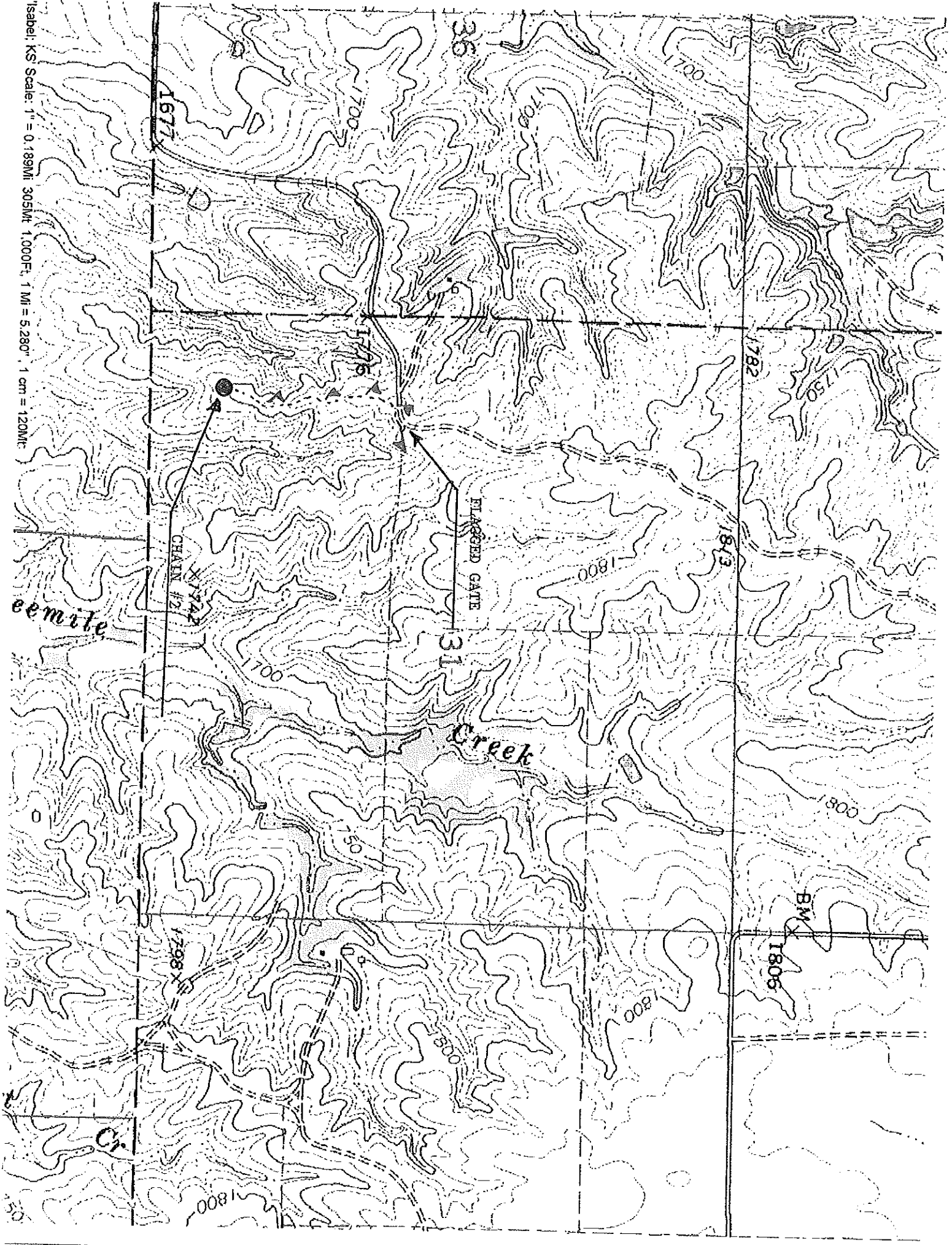
AUTHORIZED BY: Randy Newberry

SCALE: 1" = 1000'



DATE STAKED: 7/1/14

Isabel, KS Scale: 1" = 0.189MI 305Mtr 1.000Ft; 1 MI = 5.280" 1 cm = 120Mtr



1677

36

31

FLAGGED GATE

Creek

CHAIN #2

X 1742

1782

1813

BM 1806

eemite

Cr.