

Robert L. Milford

PETROLEUM GEOLOGIST
Wichita, Kansas

GEOLOGISTS REPORT

DRILLING TIME AND SAMPLE LOG

OPERATOR Murfin Drilling Company, Inc.
LEASE Frisbie #5-23
LOC. SPOT 165' w of C E2 NW

LOC. FOOTAGE 1,320' FNL 1,815' FWL
SEC. 23 TWPSP 25 RANG 36W
COUNTY Rawlins STATE KANSAS

CONTRACTOR Murfin Drilling Co., Inc. RIG NO. 8
DRILLING STARTED 3-15-2014 COMPLETED 3-24-2014
MUD DISPLACED 3,651 WUD TYPE Chemical
DRILLING TIME KEPT FROM 3,800' TO RTD
SAMPLES SAVED FROM 3,900' TO RTD
SAMPLES EXAMINED FROM 3,900' TO RTD
GEOLOGICAL SUPERVISION FROM 3,900' TO RTD

NEAREST TOWN/LOCALITY Wichita, Kansas
CENSUS RECORD 3,309'
CONDUCTOR W/ 350 sacks cement
SURFACE 8.5/8" @ 345'
PRODUCTION NONE

ELECTRICAL SURVEYS
Pioneer Wireline
Dual Induction Log
Dual Compensated

FORMATION NAME TOP LOG DATUM TOP SAMPLE DATE
Stone Corral 3,175' +139 3,177' +137
Base Stone Corral 3,207' +107 3,207' +107
Topeka 4,022' -708 4,023' -709
Lansing 4,182' -868 4,182' -868
Hebber 4,233' -919 4,233' -919
Lansing 4,485' -1141 4,486' -1142
Stark 4,504' -1190 4,505' -1191
B/KC 4,635' -1321 4,635' -1321
Pawnee 4,706' -1392 4,707' -1393
Cherokee 4,830' -1516 4,830' -1516

Porosity Log
Borehole Compensated
Sonic Log



DATE	7:00 AM DEPTH	REMARKS
3-15-14	0'	Spud @ 3:30 pm. Plug down @ 9:30 pm. Drilled out plug @ 5:30 am on 3/16 w/ PDC bit
3-16-14	440'	Cut 440' in last 24 hrs
3-17-14	3,335'	Cut 2,895' in last 24 hrs; 21.25 hrs drlg. Bit trip @ 3900'. DST #1 @ 4050'
3-18-14	4,050'	Cut 715' in last 24 hrs; 16.5 hrs drlg. DST #2 @ 4164'
3-19-14	4,164'	Cut 114' in last 24 hrs; 4.75 hrs drlg. DST #3 @ 4257'
3-20-14	4,257'	Cut 93' in last 24 hrs; 4.25 hrs drlg. DST #4 @ 4313'
3-21-14	4,313'	Cut 56' in last 24 hrs; 4.25 hrs drlg. DST #5 @ 4373'
3-22-14	4,400'	Cut 87' in last 24 hrs; 4.75 hrs drlg. DST #6 @ 4490'
3-23-14	4,505'	Cut 105' in last 24 hrs; 5.75 hrs drlg. DST #7 @ 4744'
3-24-14	4,744'	Cut 239' in last 24 hrs; 14 hrs drlg. RTD 4830' @ 8:10 pm
3-25-14	4,830'	Cut 86' in last 24 hrs; 3.25 hrs drlg. P&A

Remarks

The electric log measurements correlate from even to 2' higher to the drilling measurements.

Formation tops and lithology on this report have been corrected to the electric log.

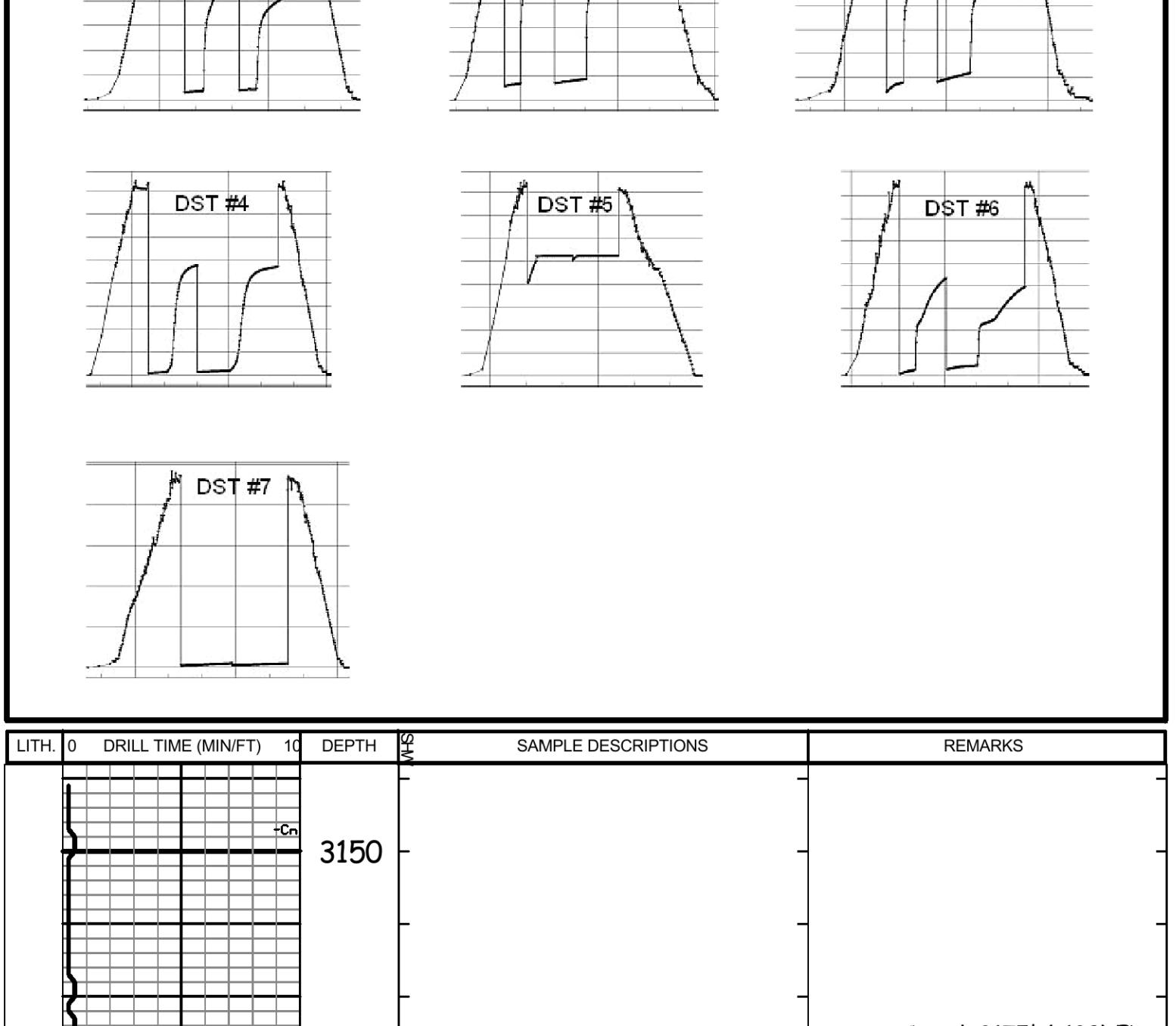
The drilling samples were deposited at the Kansas Geological Survey office in Wichita.

Respectfully submitted,

Robert L. Milford

Drill Stem Test Charts

Drill Stem Test by Trilobite Testing, Inc.



LITH	DRILL TIME (MIN/FT)	DEPTH	SAMPLE DESCRIPTIONS	REMARKS
------	---------------------	-------	---------------------	---------

