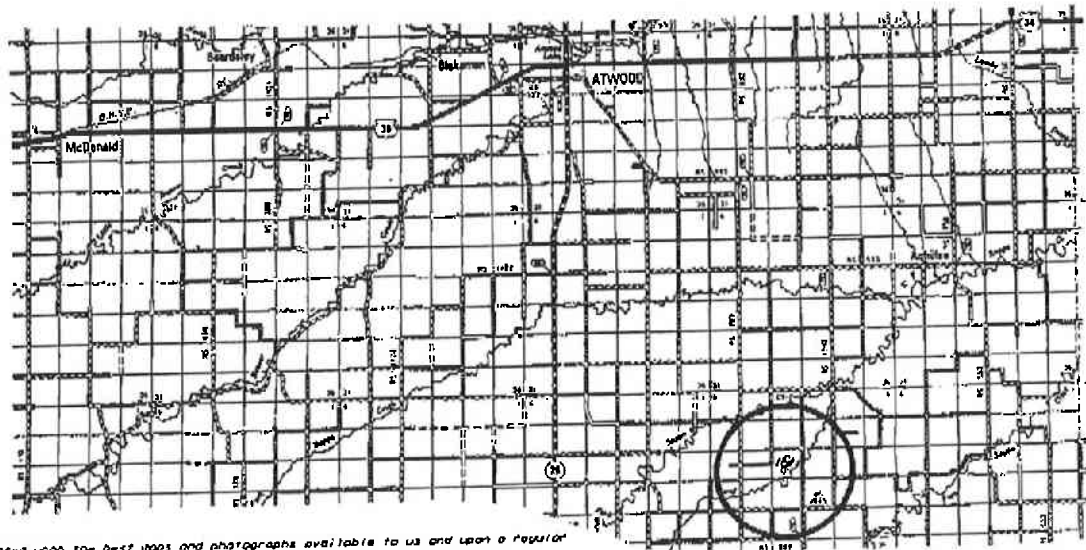
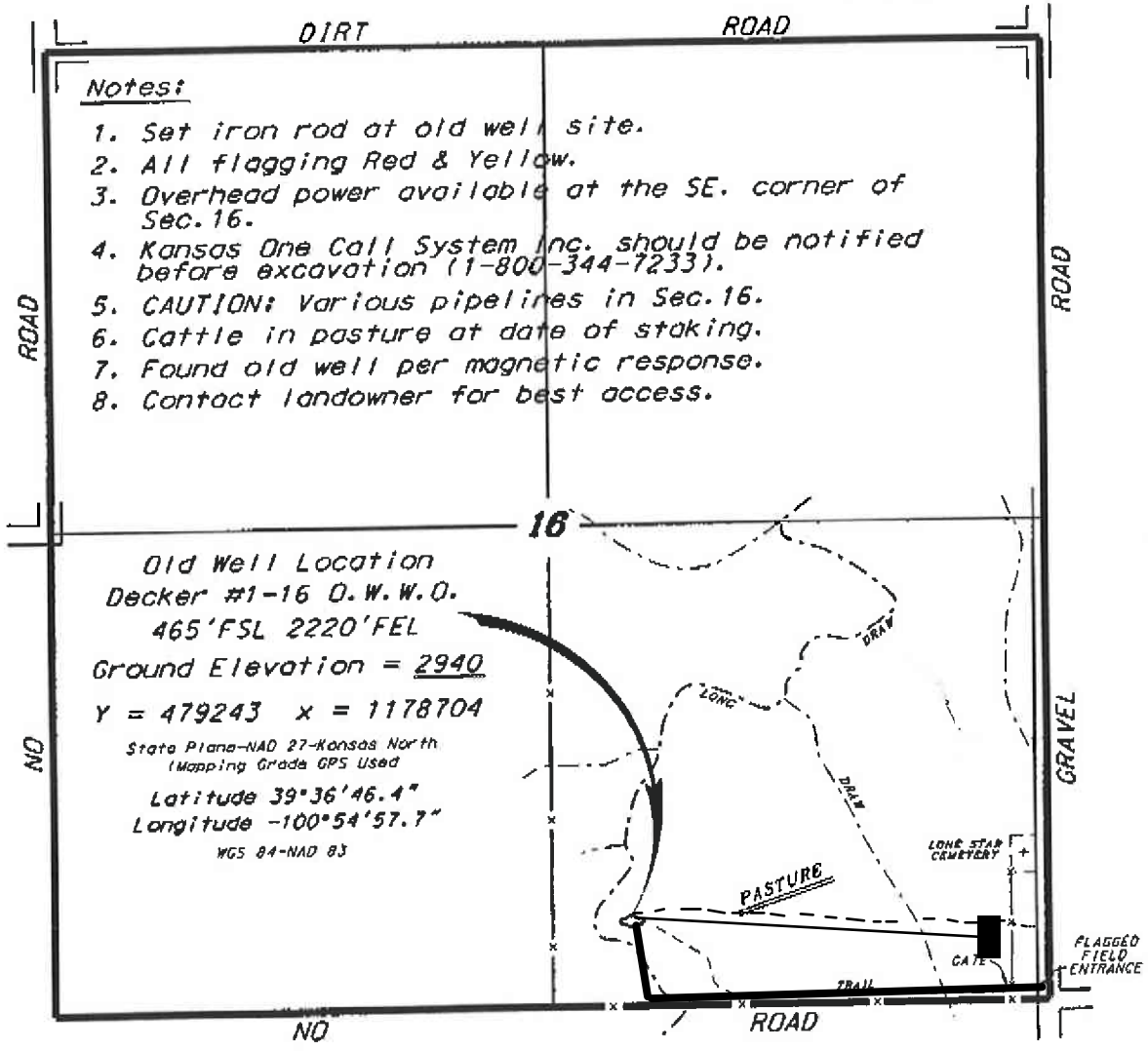


L.D. DRILLING, INC.  
DECKER LEASE  
SE. 1/4, SECTION 16, T5S, R32W  
RAWLINS COUNTY, KANSAS

Directions:

From the intersection of Highway 36 and Highway 25 (in Atwood, Kansas) go 8.5 miles East on Highway 36, then go 15.0 miles South, then go 1.0 miles West, then go 1.0 miles north to the SE. corner of Section 16, then go 0.08 miles North, then go 0.42 miles West to location.

\*Ingress and egress to location as shown on this plot is per usage only and may not be legally opened for public use. Contact landowner, tenant and county road department for access.



\* Controlling data is based upon the best maps and photographs available to us and upon a regular section of land containing 640 acres.  
 \* Approximate section lines were determined using the normal standard of care of oilfield surveyors practicing in the state of Kansas. The section corners, which establish the precise section lines, were not necessarily located, and the exact location of the oilfield location in the section is not guaranteed. Therefore, the operator accepting this service and accepting this plot and all other services relying thereon agree to hold Central Kansas Oilfield Services, Inc. (its officers and employees) harmless from all losses, costs and expenses and shall continue released from any liability from incidental or consequential damages.  
 \* Elevations derived from National Geodetic Vertical Datum.

Date July 10, 2014