



**TRILOBITE TESTING, INC.**

# DRILL STEM TEST REPORT

Herman L. Loeb, LLC

**29-27s-18w Kiowa Ks.**

P.O.Box 838  
Lawrenceville Il. 62439

**Rosenberger#2-29**

ATTN: Jon Christensen

Job Ticket: 51891

**DST#: 2**

Test Start: 2014.03.24 @ 02:04:01

## GENERAL INFORMATION:

Formation: **KC. I**

Deviated: No Whipstock: ft (KB)

Time Tool Opened: 05:06:01

Time Test Ended: 10:16:16

Test Type: Conventional Bottom Hole (Reset)

Tester: Gary Pevoteaux

Unit No: 56

**Interval: 4404.00 ft (KB) To 4424.00 ft (KB) (TVD)**

Reference Elevations: 2217.00 ft (KB)

Total Depth: 4424.00 ft (KB) (TVD)

2205.00 ft (CF)

Hole Diameter: 7.88 inches Hole Condition: Fair

KB to GR/CF: 12.00 ft

**Serial #: 8352 Inside**

Press @ Run Depth: 46.03 psig @ 4405.00 ft (KB)

Capacity: 8000.00 psig

Start Date: 2014.03.24

End Date:

2014.03.24

Last Calib.:

2014.03.24

Start Time:

02:04:06

End Time:

10:16:15

Time On Btm:

2014.03.24 @ 05:03:46

Time Off Btm:

2014.03.24 @ 08:17:46

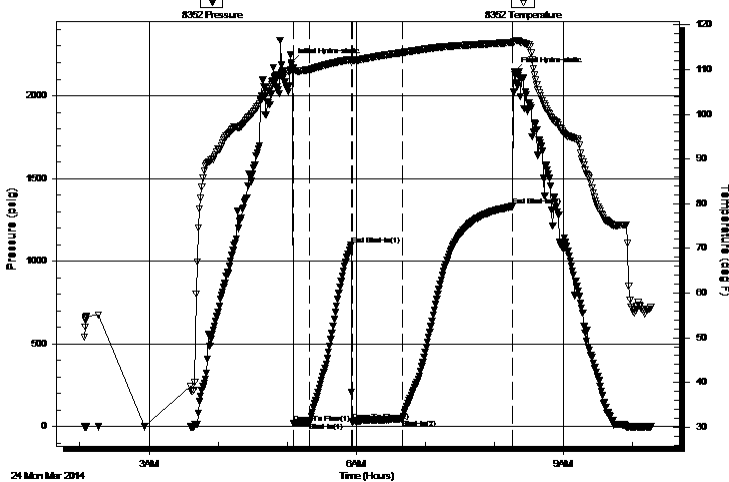
**TEST COMMENT:** IF: Fair to strong blow . B.O.B. in 10 mins.

IS: Weak blow . 1/4 - 1/2".

FF: Strong blow . B.O.B. in 19 secs.

FS: Weak blow . (surface)

Pressure vs. Time



## PRESSURE SUMMARY

Time (Min.)	Pressure (psig)	Temp (deg F)	Annotation
0	2200.72	110.06	Initial Hydro-static
3	19.03	109.80	Open To Flow (1)
16	26.12	110.02	Shut-In(1)
52	1099.35	112.27	End Shut-In(1)
53	28.97	112.00	Open To Flow (2)
97	46.03	113.80	Shut-In(2)
193	1331.36	116.05	End Shut-In(2)
194	2145.75	116.29	Final Hydro-static

## Recovery

Length (ft)	Description	Volume (bbl)
62.00	GOCM 12%g 6%o 82%m	0.30
0.00	1210 ft. of GIP	0.00

## Gas Rates

	Choke (inches)	Pressure (psig)	Gas Rate (Mcf/d)

\* Recovery from multiple tests



**TRILOBITE  
TESTING, INC.**

# DRILL STEM TEST REPORT

**FLUID SUMMARY**

Herman L. Loeb, LLC

**29-27s-18w Kiowa Ks.**

P.O.Box 838  
Lawrenceville Il. 62439

**Rosenberger#2-29**

Job Ticket: 51891      **DST#: 2**

ATTN: Jon Christensen

Test Start: 2014.03.24 @ 02:04:01

## Mud and Cushion Information

Mud Type: Gel Chem	Cushion Type:	Oil API:	deg API
Mud Weight: 9.00 lb/gal	Cushion Length: ft	Water Salinity:	4000 ppm
Viscosity: 62.00 sec/qt	Cushion Volume: bbl		
Water Loss: 9.19 in <sup>3</sup>	Gas Cushion Type:		
Resistivity: 0.00 ohm.m	Gas Cushion Pressure: psig		
Salinity: 4000.00 ppm			
Filter Cake: 0.20 inches			

## Recovery Information

Recovery Table

Length ft	Description	Volume bbl
62.00	GOCM 12%g 6%o 82%m	0.305
0.00	1210 ft. of GIP	0.000

Total Length: 62.00 ft      Total Volume: 0.305 bbl

Num Fluid Samples: 0      Num Gas Bombs: 0      Serial #: none

Laboratory Name:      Laboratory Location:

Recovery Comments:

