



CONSOLIDATED
Oil Well Services, LLC

265777

TICKET NUMBER 43815
LOCATION 180 Eldorado
FOREMAN Jacob Storm

PO Box 884, Chanute, KS 66720
620-431-9210 or 800-467-8676

FIELD TICKET & TREATMENT REPORT

CEMENT ADI # 15-115-21433-00-01

DATE	CUSTOMER #	WELL NAME & NUMBER	SECTION	TOWNSHIP	RANGE	COUNTY
1-31-14	8136	Kochia #1	19	21	SE	McPherson

TRUCK #	DRIVER	TRUCK #	DRIVER
446	Terrance M		
502	Duston		
702	Jacob		

CUSTOMER: Te-pe oil
MAILING ADDRESS: PO Box 522
CITY: Canton STATE: KS ZIP CODE: 67428

JOB TYPE Longstring B HOLE SIZE 7 7/8 HOLE DEPTH 2361 CASING SIZE & WEIGHT 5 1/2 used
CASING DEPTH 2305 DRILL PIPE _____ TUBING _____ OTHER _____
SLURRY WEIGHT 14.16 SLURRY VOL 40.15 WATER gal/sk _____ CEMENT LEFT in CASING _____
DISPLACEMENT 56.28 bbl DISPLACEMENT PSI _____ MIX PSI 400 RATE 6.6 bpm

REMARKS: Safety meeting, Break circulation, pump 10 bbl water flush mix 135 sks 60/40 p02 3 1/2 gal 2 1/2 cc 5/1601-seal, 10% salt, displace with 56.28 bbl landing plug at _____ psi check float float held plug Rat hole with 25 sks 60/40 p02 3 1/2 gal 2 1/2 cc 5/1601-seal 10% salt

ACCOUNT CODE	QUANTITY or UNITS	DESCRIPTION of SERVICES or PRODUCT	UNIT PRICE	TOTAL
5401	1	PUMP CHARGE	1085.00	1085.00 ✓
5406	30	MILEAGE	4.20	126.00 ✓
5407	1	min bulk delivery	368.00	368.00 ✓
1131	160	60/40	13.18	2108.80 ✓
1118 B	500	gel	.22	110.00 ✓
1110 A	800	kol-seal	.46	368.00 ✓
1102	250	calcium chloride	.78	195.00 ✓
1111	1600	Salt	.39	624.00 ✓
4406	1	5 1/2 Rubber plug	73.50	73.50 ✓
5620	1	5 1/2 plug container	215.00	N/C ✓
				5058.30
		15% discount		-758.75 ✓
		Subtotal		4299.55

completed

SALES TAX 226.24
ESTIMATED TOTAL 4525.79

AVIN 3737
AUTHORIZATION Terry Bandy TITLE Operator DATE 1-31-14

I acknowledge that the payment terms, unless specifically amended in writing on the front of the form or in the customer's account records, at our office, and conditions of service on the back of this form are in effect for services identified on this

Dyna-Log

INCORPORATED

Complete Cased Hole Services

EL DORADO, KS

RADIOACTIVITY LOG

Company TEPE OIL GAS Well KOEHN # 1 Field Country U.S.A. State/Prv KANSAS	Company TE PE OIL & GAS	
	Well KOEHN # 1	
	Field	
	Country U.S.A.	State/Prv KANSAS
Location 2048' FSL & 1875' FEL SEC. 19 TWP. 21s RGE. 5 E MARION COUNTY		Other Services PERFORATE
Permanent Datum GROUND LEVEL Elevation 1372 Log Measured From KELLY BUSHING 6' A.G.L. Drilling Measured From KELLY BUSHING		Elevation K.B. 1378 G.L. 1372

Date	3-19-14
Run Number	TWO
Depth Driller	2356
Depth Logger	2356
Bottom Logged Interval	2355
Top Log Interval	1700
Open Hole Size	
Type Fluid	WATER-1666
Density / Viscosity	
Max. Well Deviation	
Estimated Cement Top	
Time Well Ready	
Time Logger on Bottom	
Equipment Number	103
Location	ELDORADO
Recorded By	SULLIVAN
Witnessed By	T.BANDY

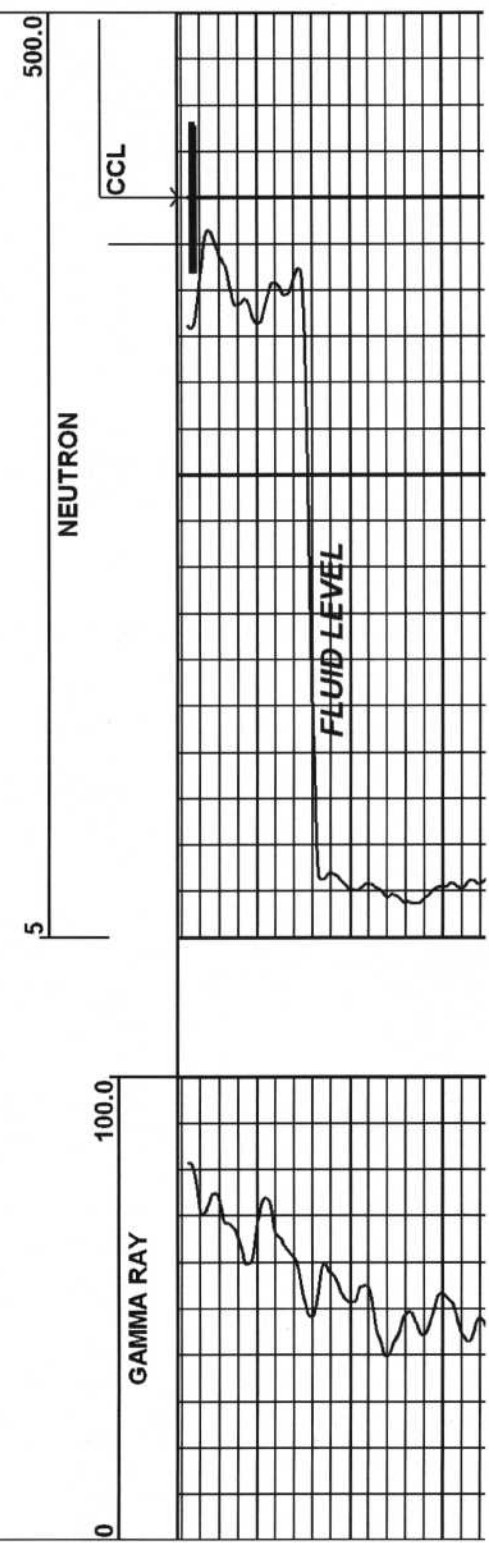
Borehole Record				Tubing Record			
Run Number	Bit	From	To	Size	Weight	From	To

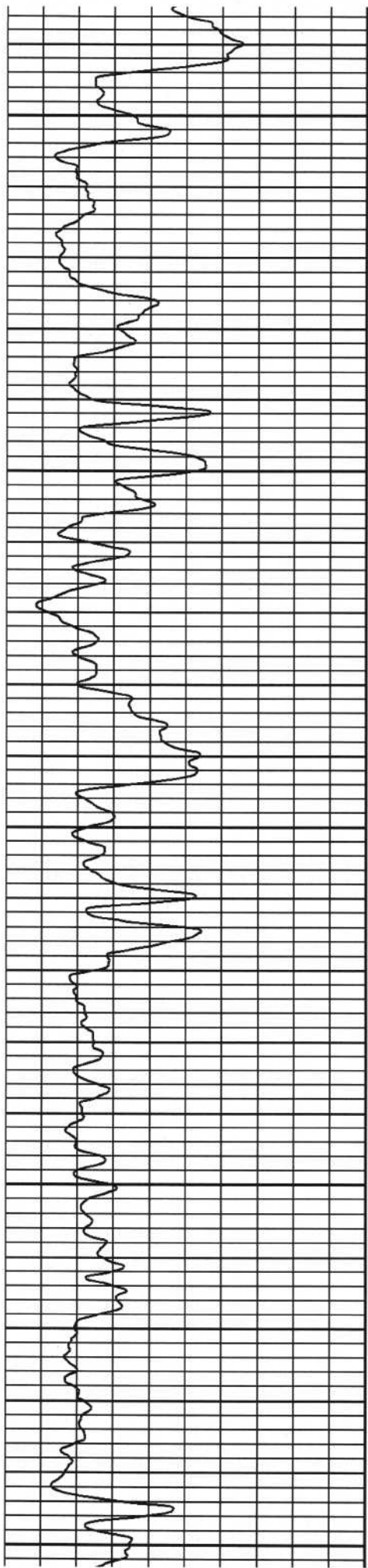
Casing Record	SIZE	WEIGHT	FROM	TO
Surface String				
Prot. String				
Production String	5 1/2		0	2358
Liner				

START: 2350.25ft
 STOP: 1643.00ft
 RES: 0.25ft
 SCALE: 5"/100'

Run #1

RUN: Run #1
 DIR: UP
 DATE: 03/19/14
 TIME: 07:59:09





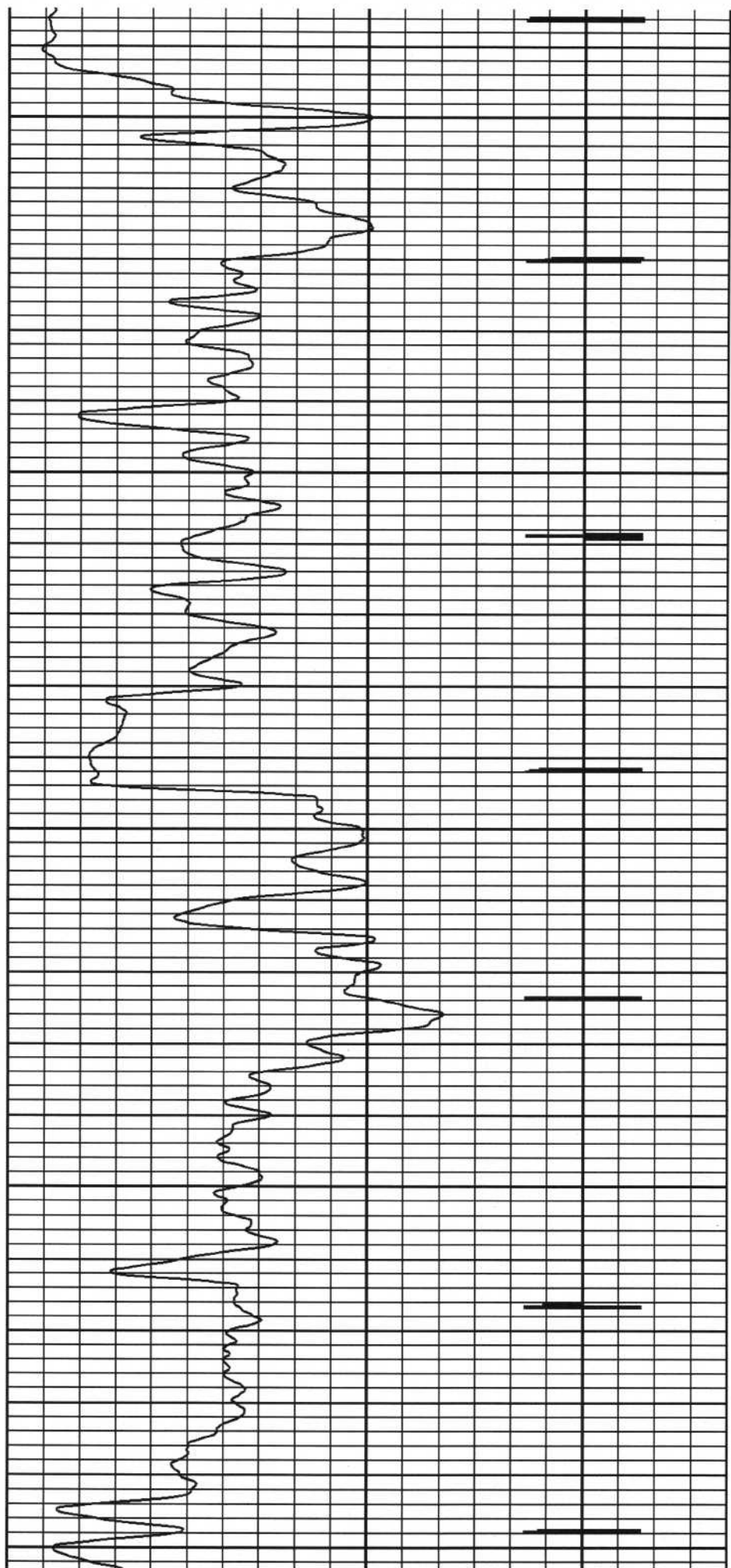
1700

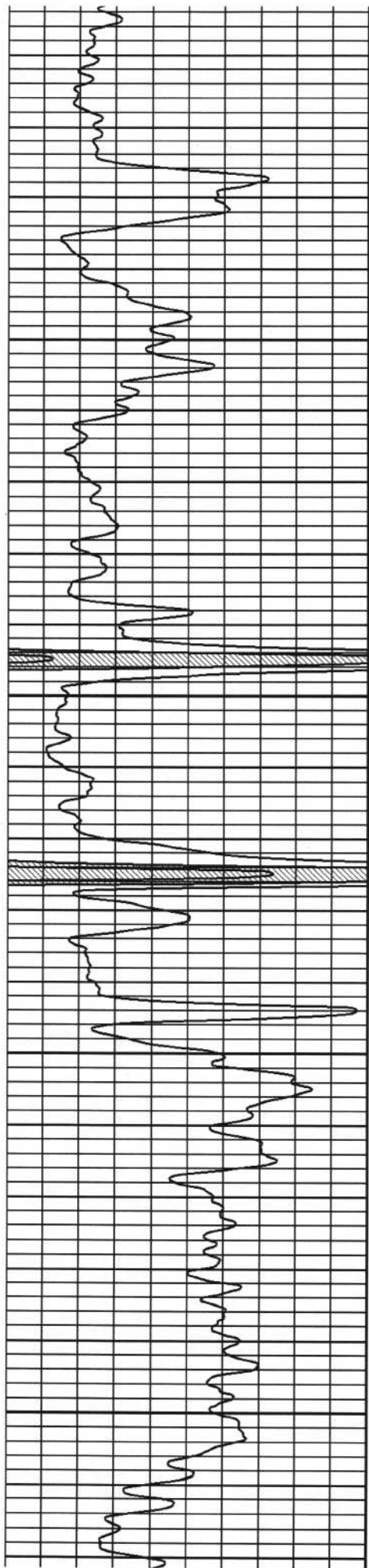
1750

1800

1850

1900



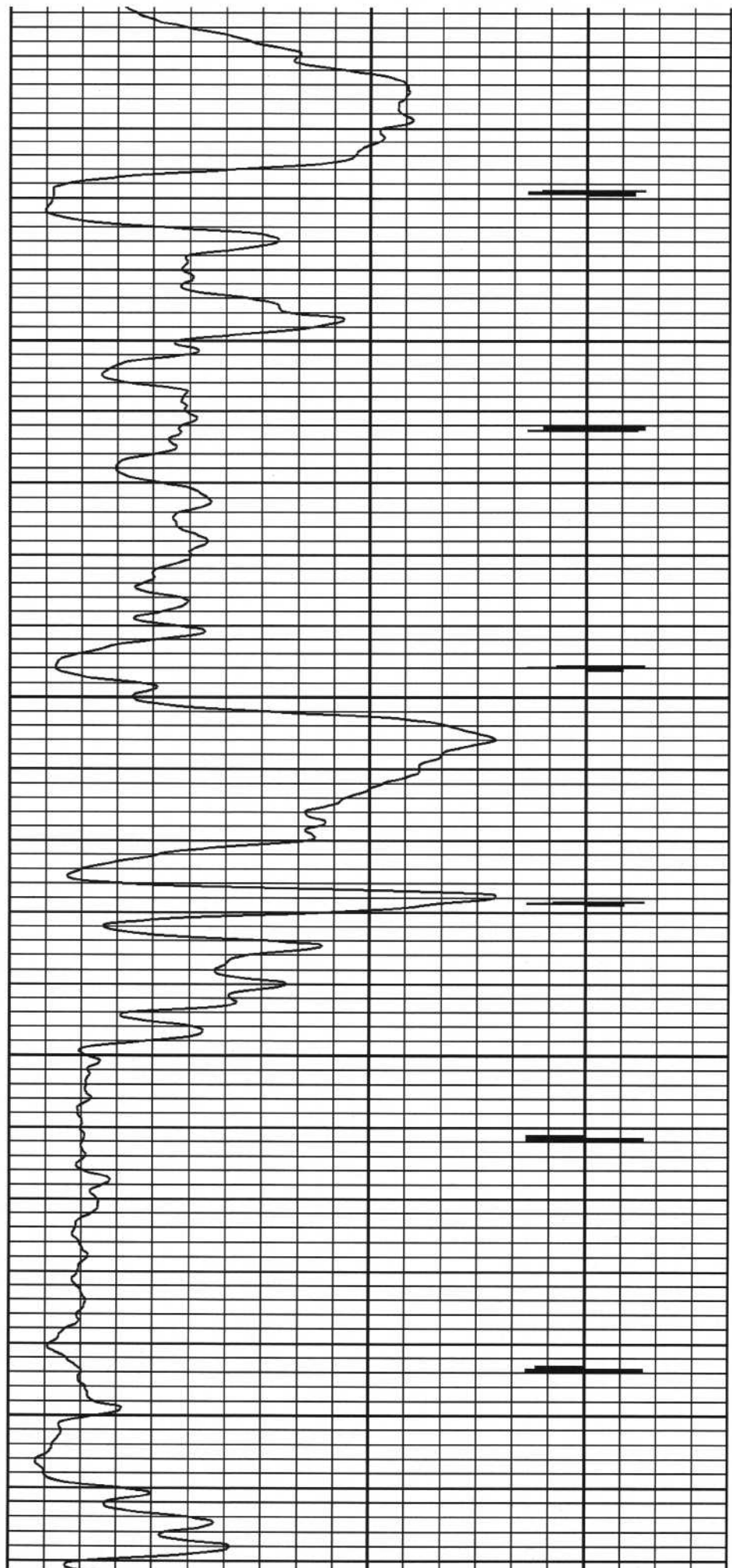


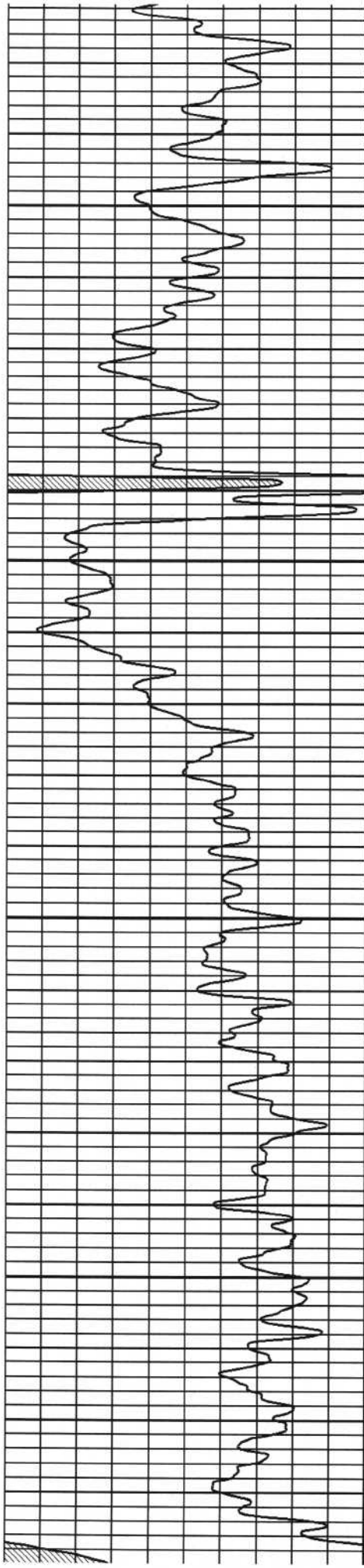
1950

2000

2050

2100



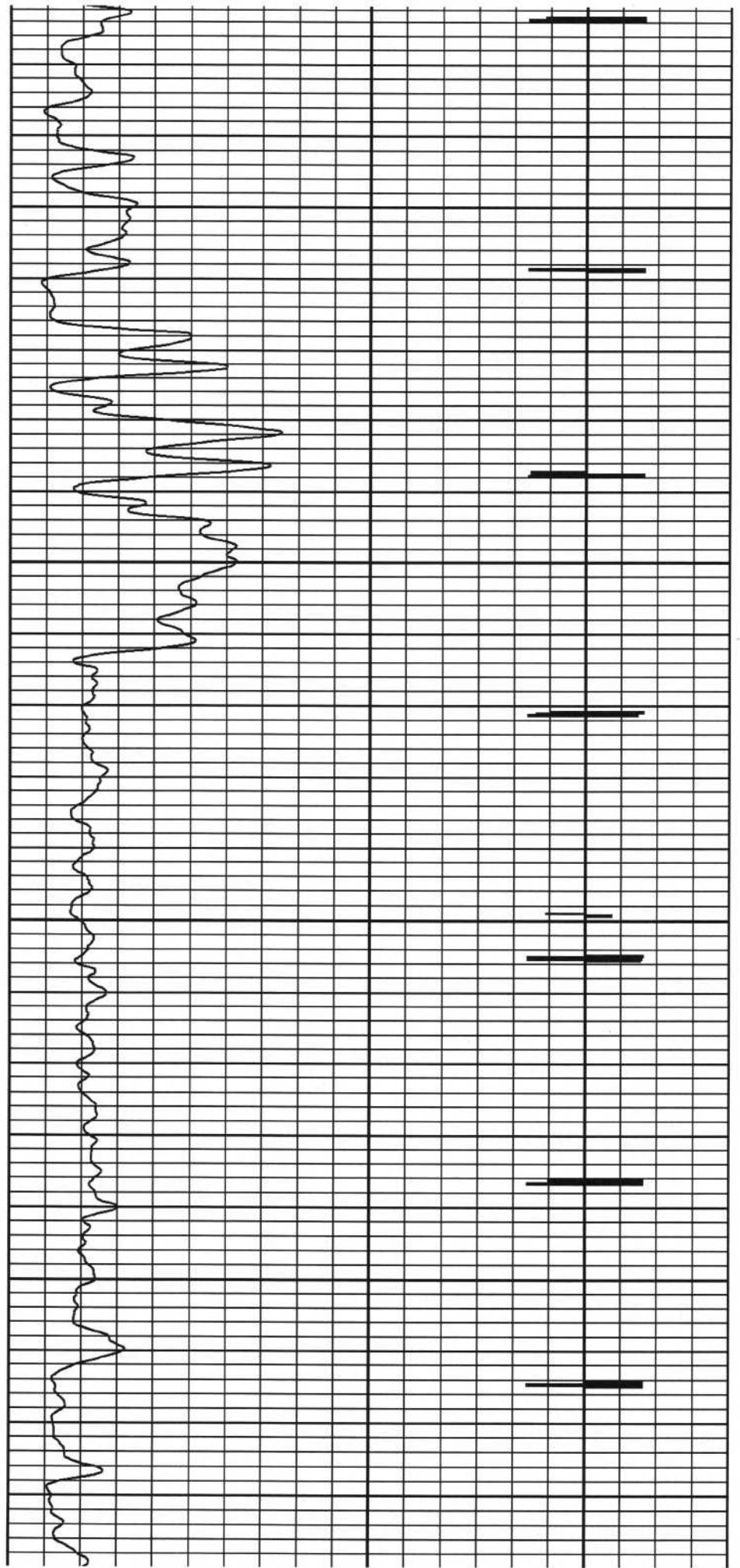


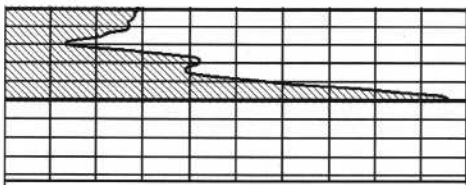
2150

2200

2250

2300





2350



CCL

0 100.0

GAMMA RAY

5 500.0

NEUTRON

RUN: Run #1
 DIR: UP
 DATE: 03/19/14
 TIME: 07:59:09

Run #1

START: 2350.25ft
 STOP: 1643.00ft
 RES: 0.25ft
 SCALE: 5"/100'

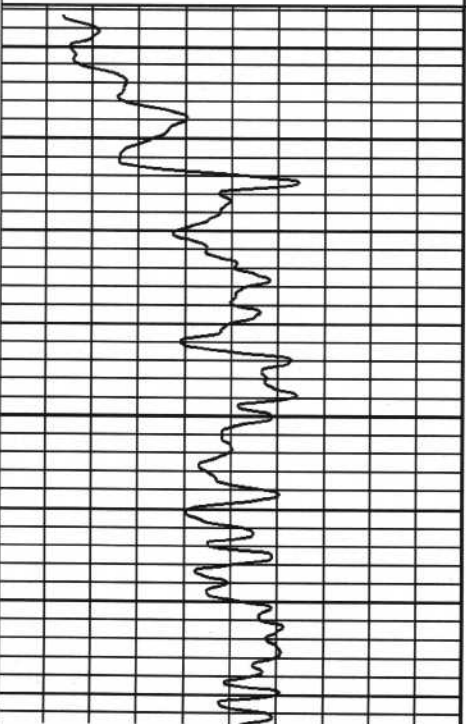
RUN: RUN # 2
 DIR: UP
 DATE: 03/19/14
 TIME: 09:15:18

RUN # 2

START: 2365.00ft
 STOP: 2161.25ft
 RES: 0.25ft
 SCALE: 5"/100'

0 100.0

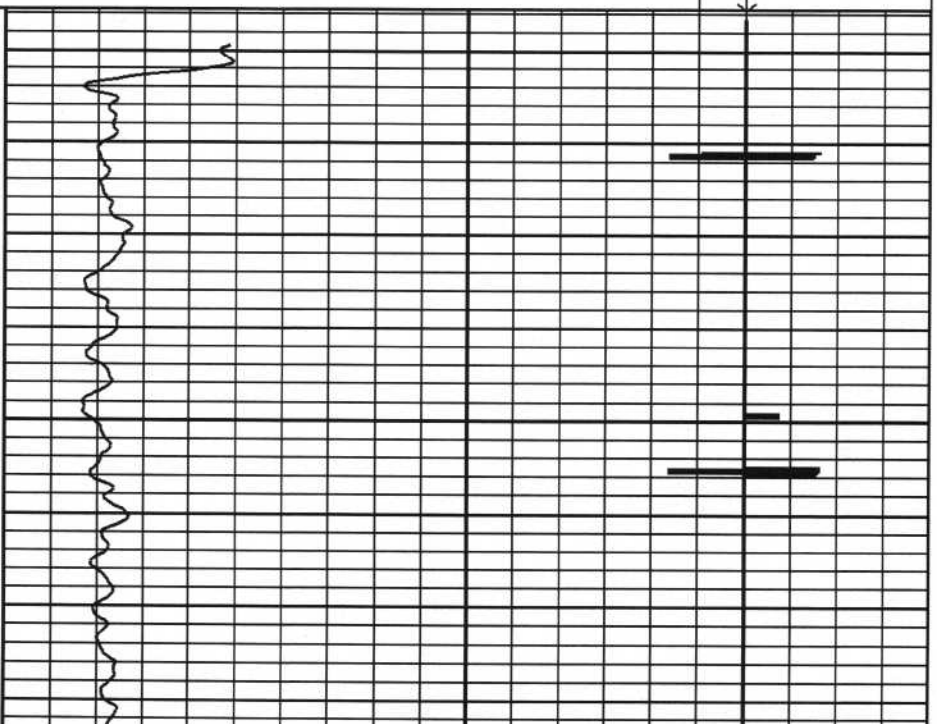
GAMMA RAY



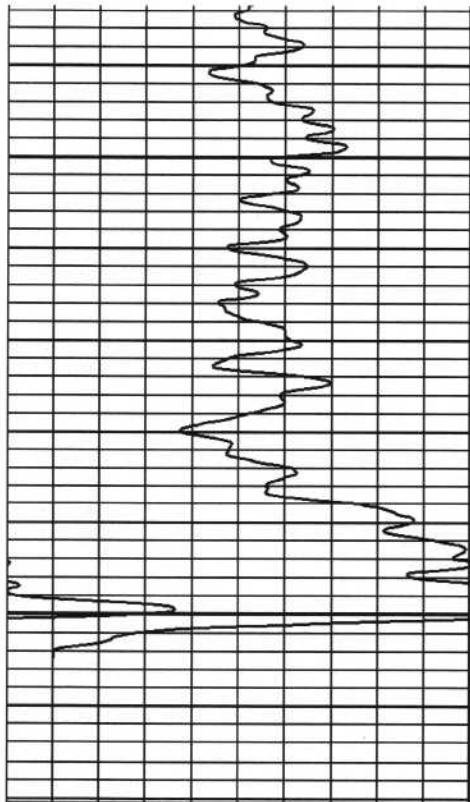
2250

5 500.0

NEUTRON

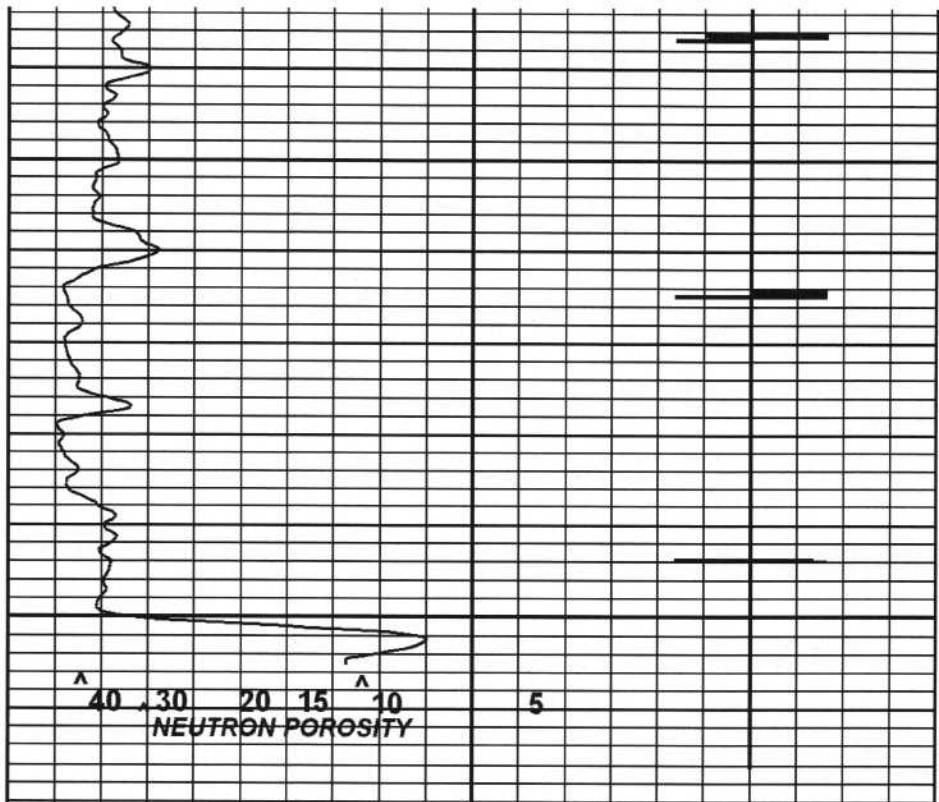


CCL



2300

2350



40 30 20 15 10 5
NEUTRON POROSITY

CCL

0 100.0

GAMMA RAY

5 500.0

NEUTRON

RUN: RUN # 2
DIR: UP
DATE: 03/19/14
TIME: 09:15:18

RUN # 2

START: 2365.00ft
STOP: 2161.25ft
RES: 0.25ft
SCALE: 5"/100'

DYNA-LOG INC.

Company TE PE OIL & GAS

Well KOEHN # 1

Field

Country U.S.A. State/Prv KANSAS