

Scale: 5" / 100'
Measured Depth Log

Well Name Koehn #3

Location E/2 W/2 E/2 SE 19-T21S-R5E

State Kansas

County Marion

Country USA

Rig Number C&G Drilling Rig 1

API Number 15-115-21470-00-00

Region Mid-Con

Field Florence

Spud Date 1/18/2014

Drilling Completed 1/24/2014

Ground Elevation 1390'

K.B. Elevation 1396

Logged Interval 1600' To TD

Total Depth 2901

Type of Drilling Fluid Chemical Mud

Operator

Company Te-Pe Oil & Gas

Address PO Box 522
Canton, KS 67428-0522

Geologist

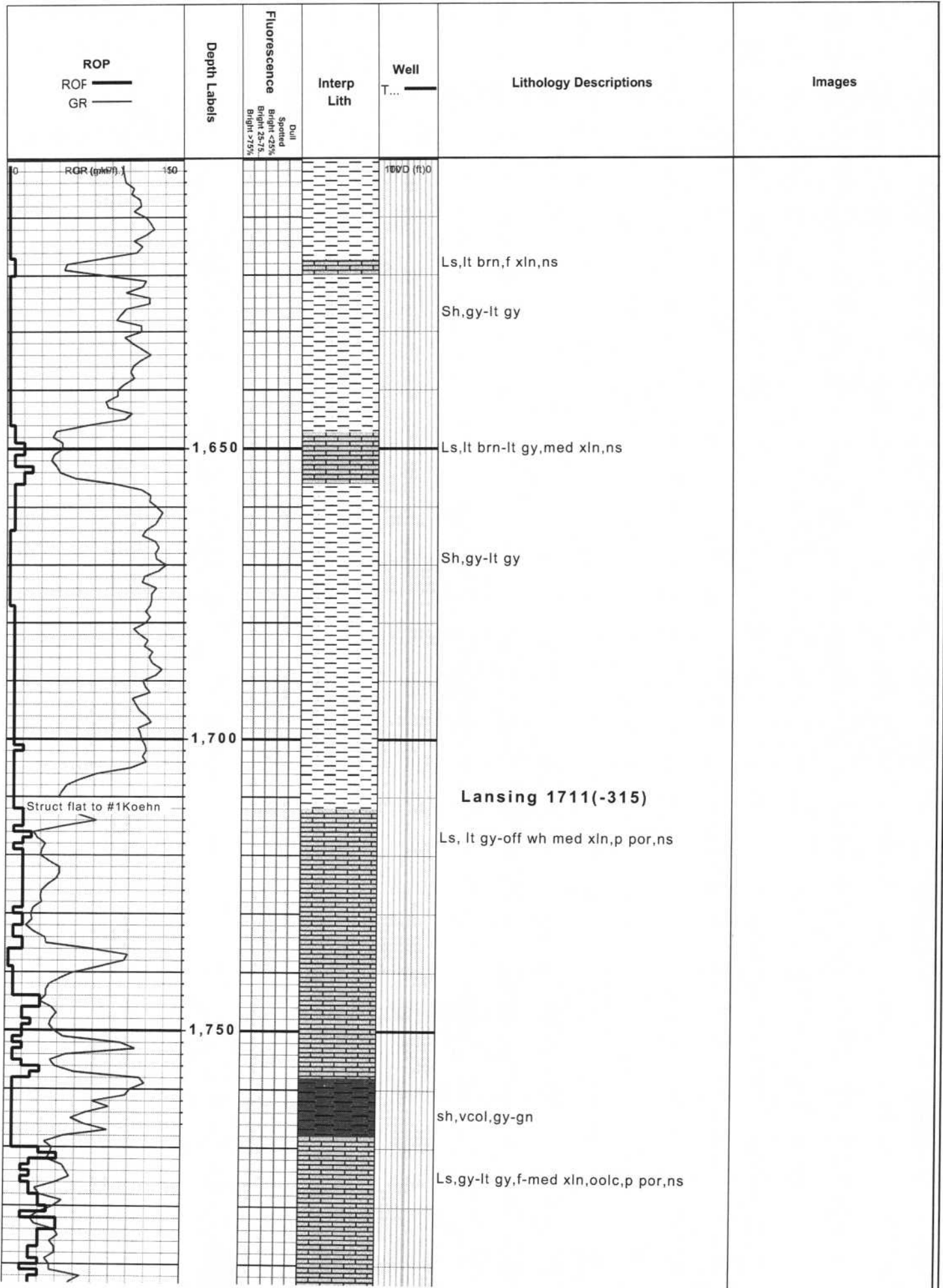
Name Daniel T. Johnson

Company Consulting Geologist

Address 19749 121st Rd
Winfield, KS 67156

Other Symbols

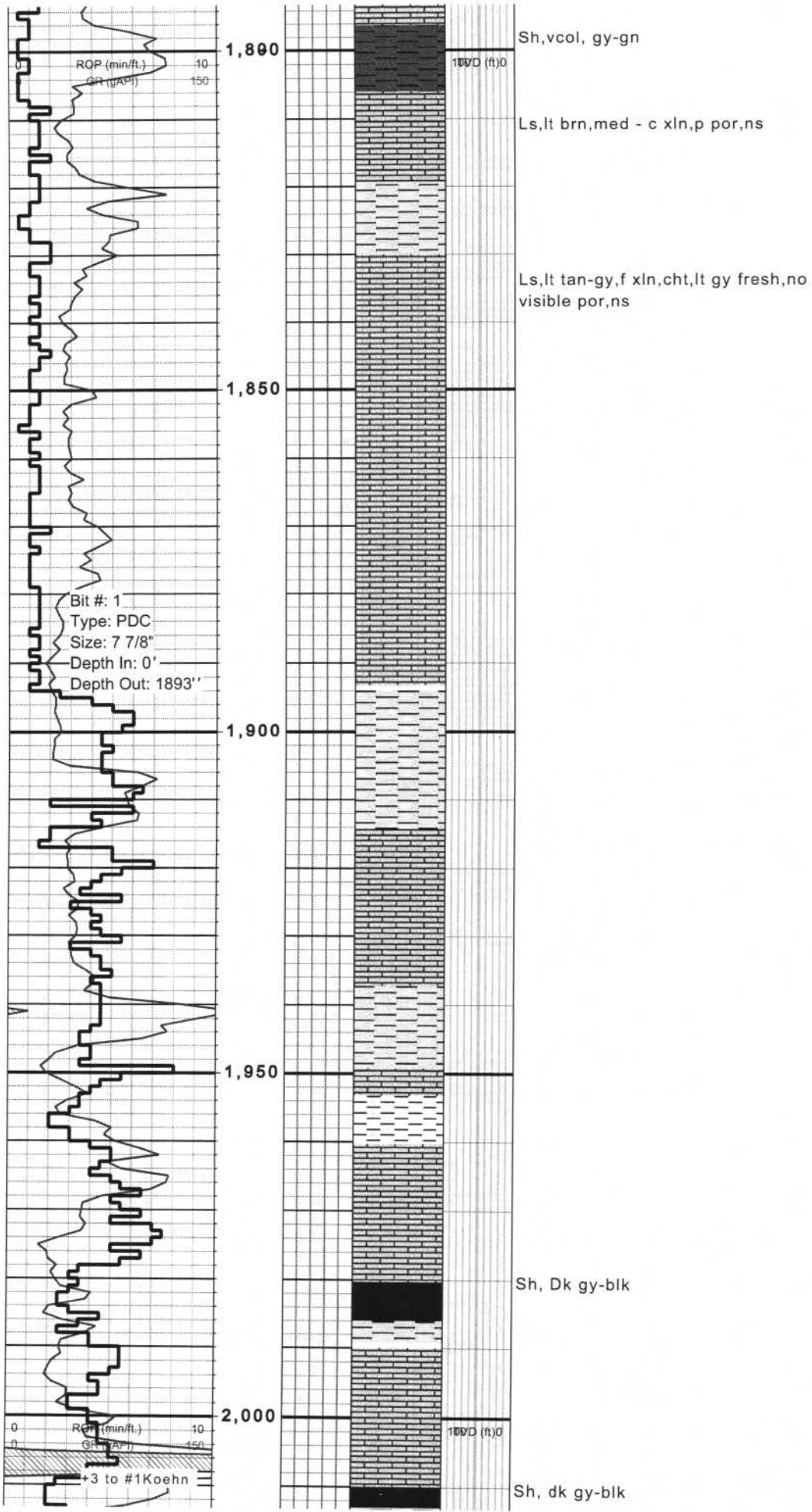
◀ SIDEWALL CORE (LEFT)

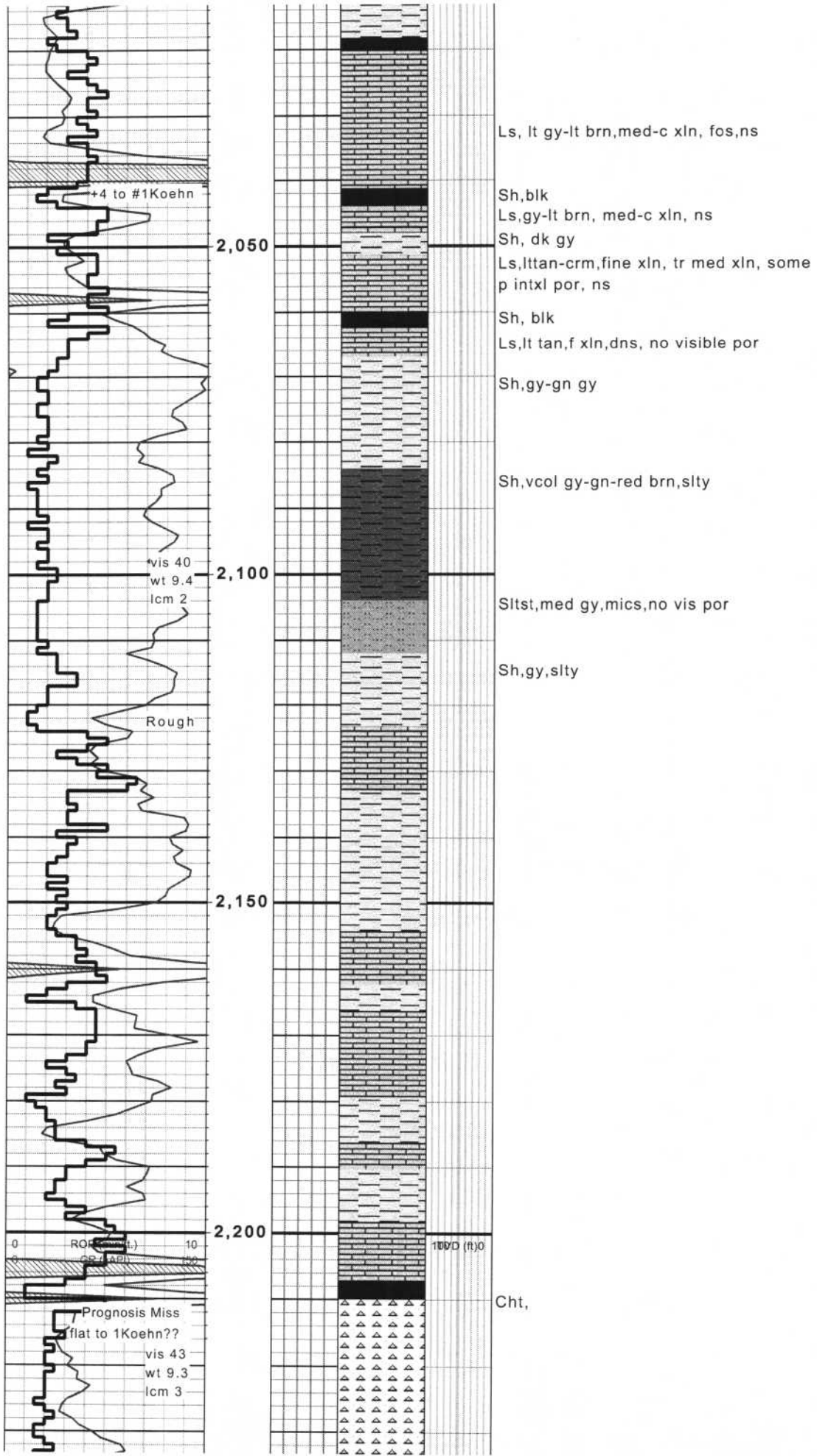


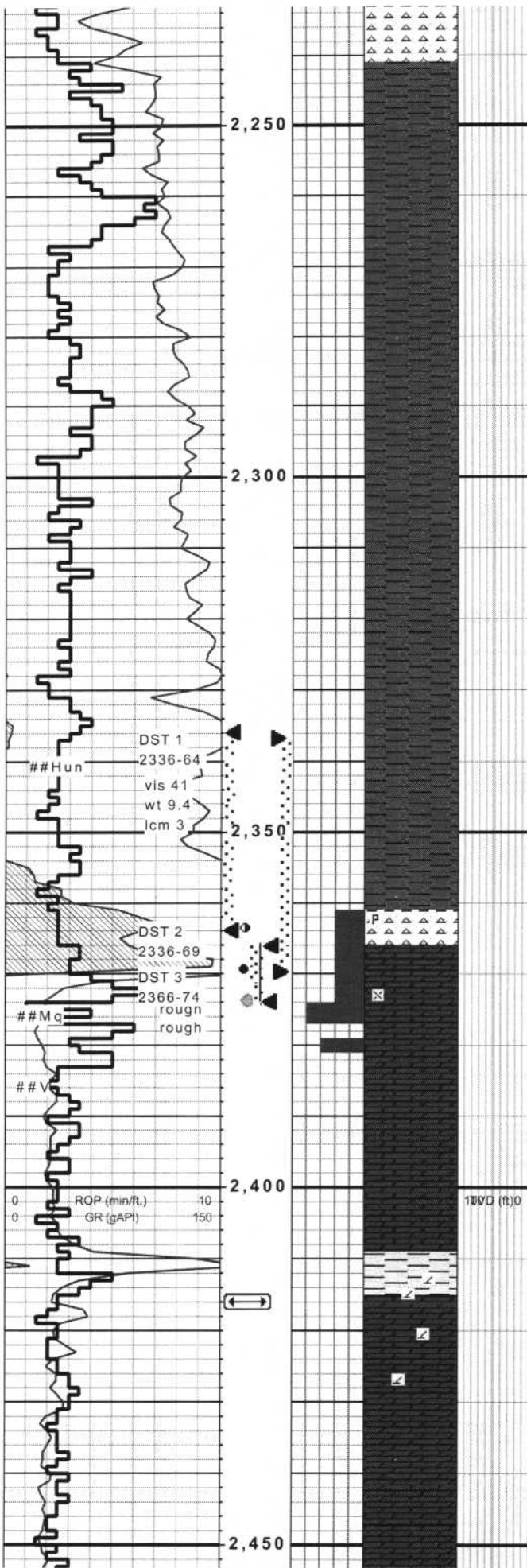
ROR (gm/cc)

Struct flat to #1Koehn

Lansing 1711(-315)







Kinderhouk Sh 2241' (-846)

Sh,gy-dk gy,tr lt gn

Sh,gy-dk gy-gn in pt

Sh,dk gy

Sh,dk gy-gn gy

DST 1
2336-64
vis 41
wt 9.4
lcm 3

DST 2
2336-69
DST 3
2366-74
rough

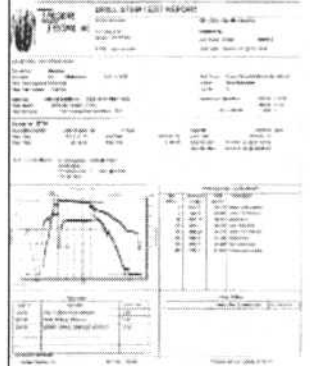
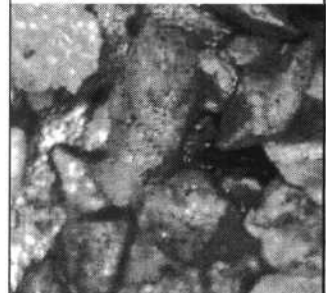
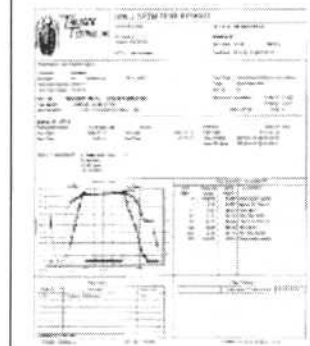
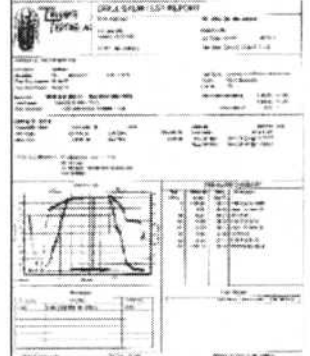
Cht,wh-off wh,mstly wthrd,<10%
fresh,p-fr pp por,tr stn,

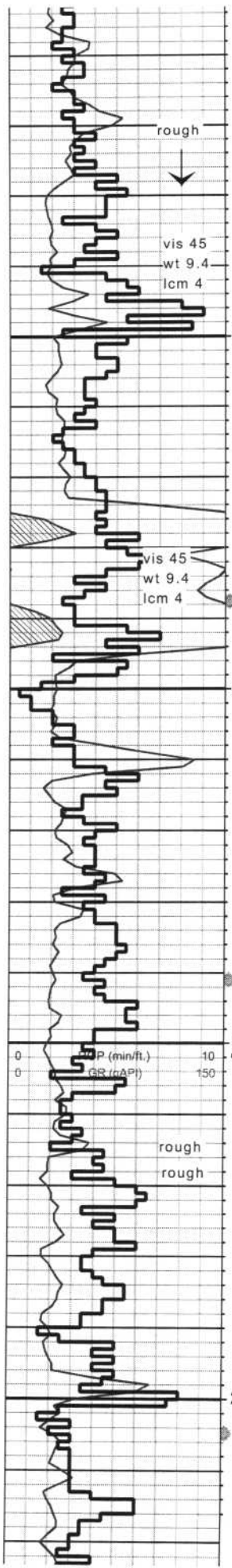
Dol,lt brn-lt gy,f-med xln,p-tr fr intxl
por,fr od,slight show free oil,med bri
flor in most dol in spl

Dol,lt-med brn,med xln,fr intxl por,suc
in pt,fr od,fr show free oil

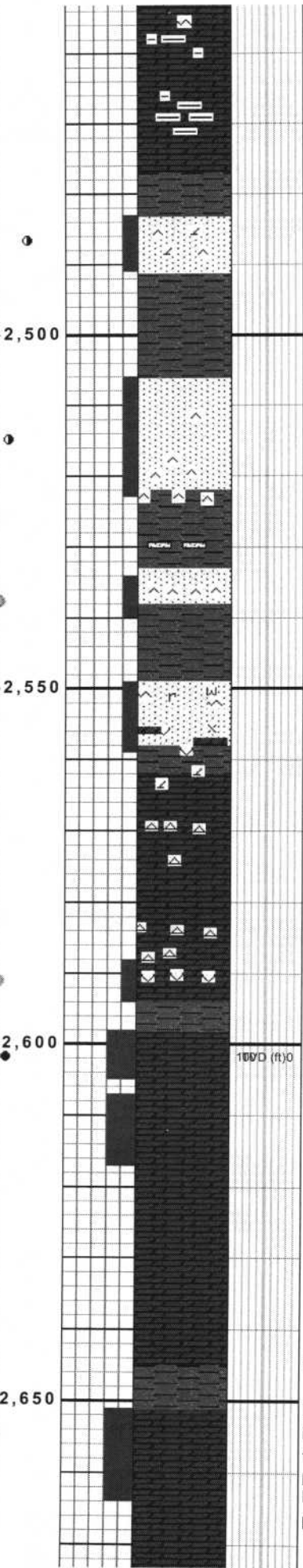
Viola 2383(-987)

Sh,gy-lt gn





Simpson Group 2478(-1082)



SS,clr-lt milky,med gr,p intgr por,tite sil
cmt,tr flor,no show

SS,lt gy-trnsl,med-c gr,w rnd,fr-g
por,some tite sil cmt,glauc,carb,no
od,tr bri flor,no cut, nfo

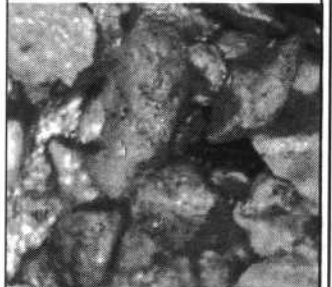
Arbuckle 2565 (-1169)

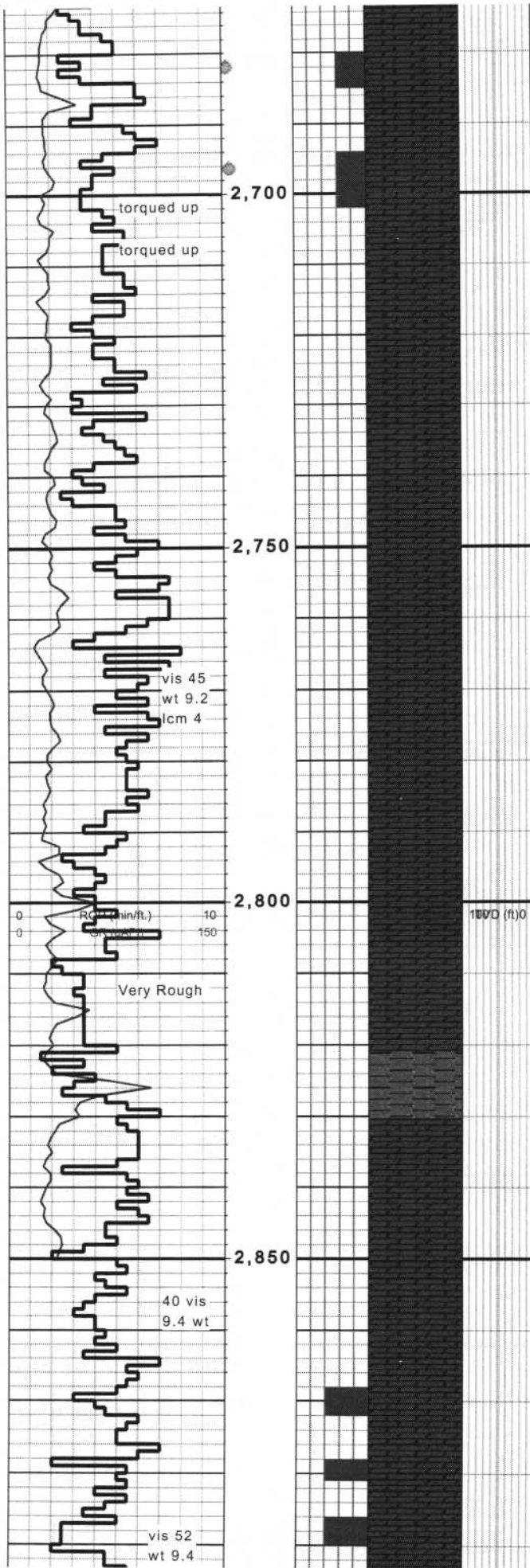
Dol, gy-brn,med-c xln,arg,fr intxl
por,ns

Dol,brn-gy brn,med xln,g intxl por,fr
vuglr por,fnt od,bri flor 10% spl,show
free o bleeding from vug,

Sh,dk gy-gn gy

Dol,lt brn-stnd,med xln,semi suc, g
intxl por,fr vuglr por,no od,fr overall
flor,10% bri,vssso,bri spl g cut when
broken
Dol,brn-gy brn,f-med xln,p-fr intxl
por,fos frags,ns





Dol,lt brn-stnd,med xln,semi suc, g
intxl por,fr vuglr por,no od,fr overall
flor,10% bri,vssso,bri spl g cut when
broken

lt brn

gy-lt brn

lt tan

Dol,lt gy-lt brn,med-c xln,g intxl por,g
vuglr por,no od, tr std?,bri uneven
flor 50% spl,nsfo

Dol,lt tan-lt gy,med xln,suc,g intxl
por,g vuglr por,bri flor 25%,no od,no
cut nsfo



LCM 8#

2,900

2889' Losing fluid
90bbl+, pulled 5jts
mixed LCM, BOB
Drilled w/reduced
pressure

2,950

3,000

ROP (min/ft) 10
GR (gAPI) 150

3,050

cut, 1510

1000 (ft) 0