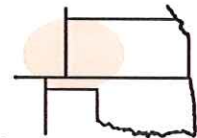




Pro-Stake LLC
Oil Field & Construction Site Staking

P.O. Box 2324
Garden City, Kansas 67846
Office/Fax: (620) 276-6159
Cell: (620) 272-1499

burt@pro-stakellc.kscoxmail.com



051332-L
PLAT NO.

11957
INVOICE NO.

Shakespeare Oil Company, Inc.

Andersen #1-3

Logan County, KS
COUNTY

3 13s 32w
Sec. Twp. Rng.

450' FSL - 335' FWL
LOCATION SPOT

SCALE: 1" = 1000'
DATE STAKED: July 10th, 2014
MEASURED BY: Luke R.
DRAWN BY: Luke R.
AUTHORIZED BY: Alex B.

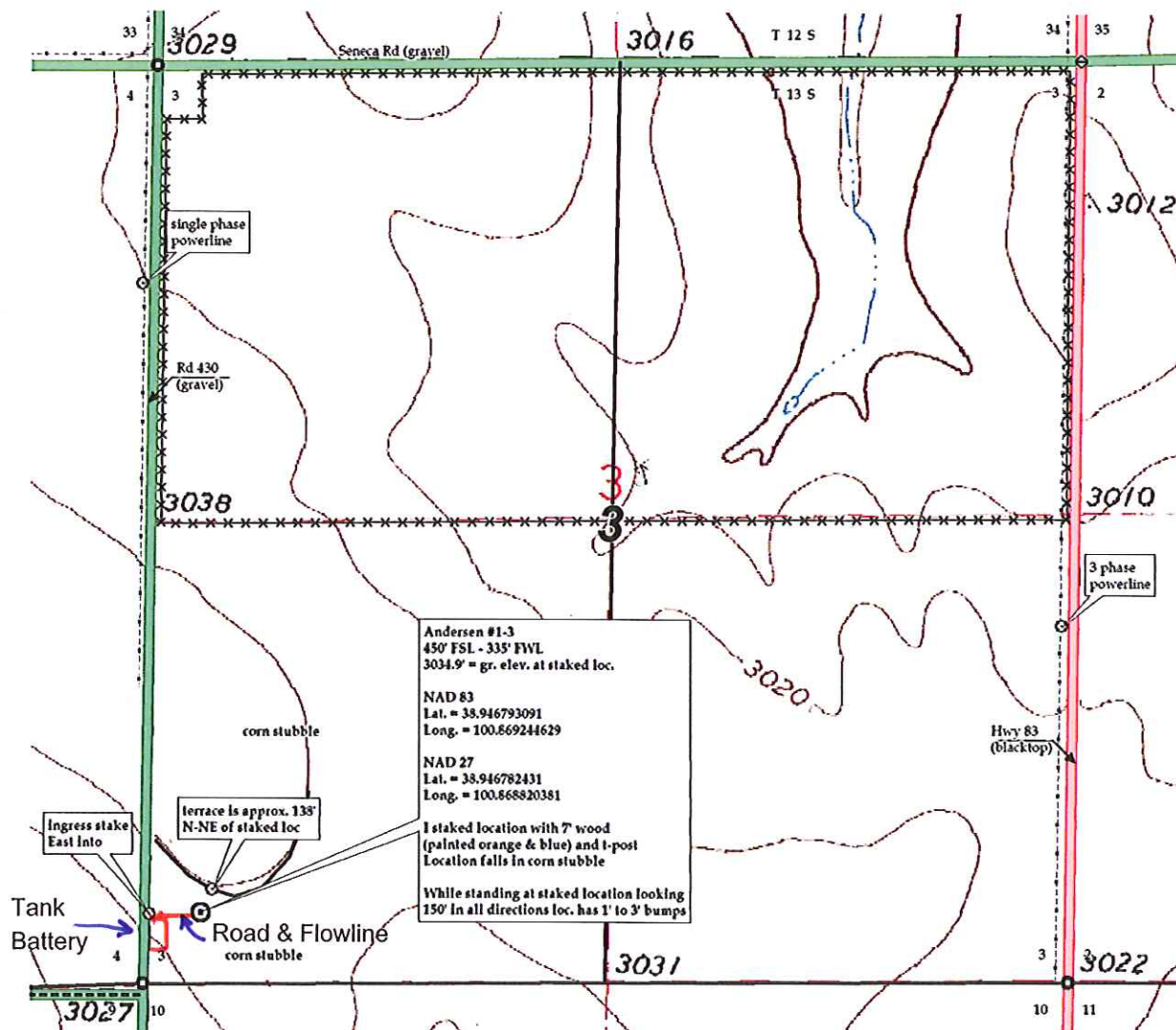


GR. ELEVATION: **3034.9'**

Directions: From the SE corner of Oakley, Ks at the intersection of Hwy 40 & Hwy 83 South – Now go 11 miles South on Hwy 83 – Now go 1 mile West on Seneca Rd to the NW corner of section 3-13s-32w – Now go 0.9 mile South on Rd 430 to ingress stake East into – Now go 335' East through corn stubble, into staked location.

Final ingress must be verified with land owner or Operator.

*This drawing does not constitute a monumented survey or a land survey plat.
This drawing is for construction purposes only.*



Preliminary non-binding estimates of tanks, roads and flowlines