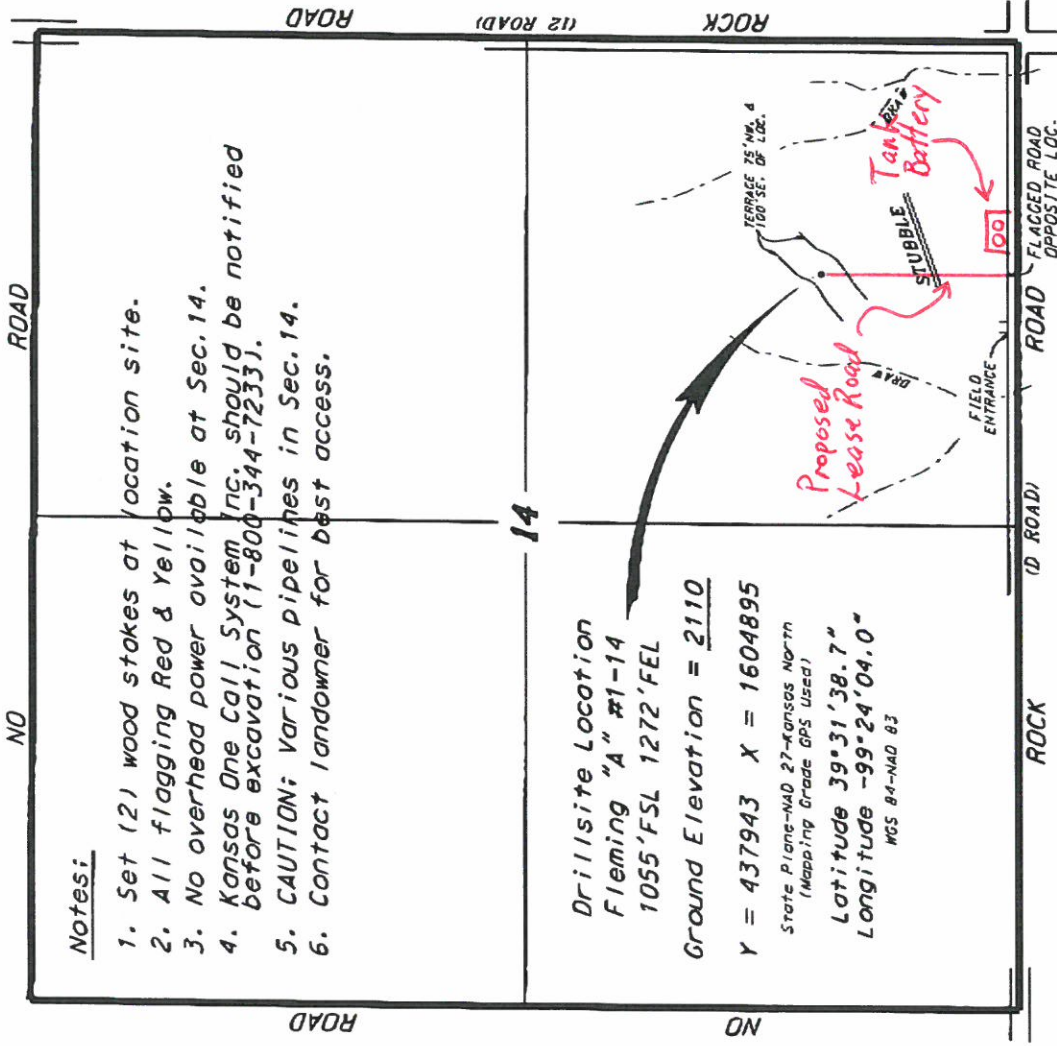


TRANS PACIFIC OIL CORPORATION
FLEMING LEASE
SE.1/4, SECTION 14, T6S, R19W
ROOKS COUNTY, KANSAS

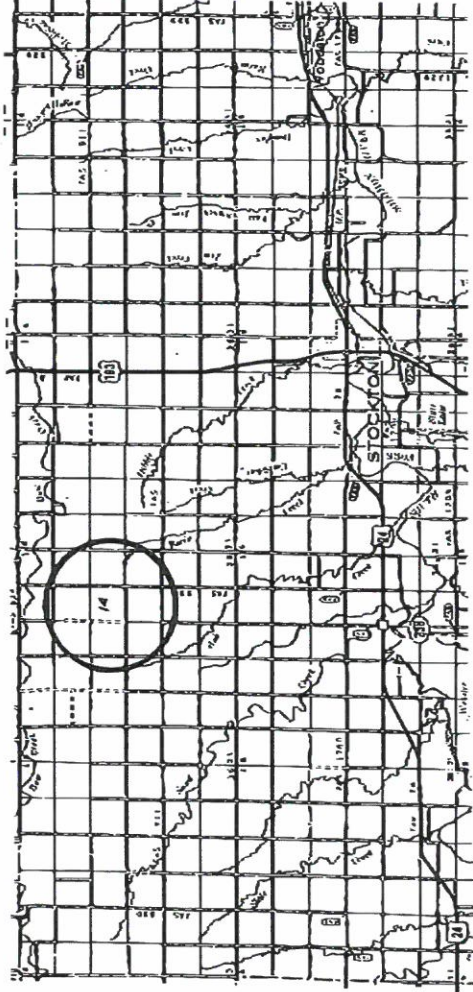
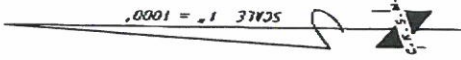


Notes:

1. Set (2) wood stakes at location site.
2. All flagging Red & Yellow.
3. No overhead power available at Sec.14.
4. Kansas One Call System Inc. should be notified before excavation (1-800-344-7233).
5. CAUTION; Various pipelines in Sec.14.
6. Contact landowner for best access.

Drillsite Location
Fleming "A" #1-14
1055'FSL 1272'FEL
Ground Elevation = 2110
Y = 437943 X = 1604895
 State Plane-NAD 27-Kansas North
 (Mapping Grade GPS Used)
Latitude 39°31'38.7"
Longitude -99°24'04.0"
 MGS 84-NAD 83

*Ingress and egress to location as shown on this plot is for usage only and may not be legally opened for public use. Contact landowner, tenant and county road department for access.



* Controling data is based upon the best maps and photographs available to us and upon a regular section of any controlling GAO areas.
 * Adjacent section lines were established using the normal standard of care of oilfield surveys practiced in the state of Kansas; the section corners, which establish the precise section lines, were not necessarily located, and the exact location of this drillsite location in the section is being relied upon in order to aid Central Kansas Oilfield Services, Inc., its officers and employees, employees of its licensees, agents and assigns and any entities released from any liability for the same.
 * Elevation derived from National Geodetic Vertical Datum.

Date July 9, 2014

CENTRAL KANSAS OILFIELD SERVICES, INC. 16201792-1977