

KIM B. SHOEMAKER

CONSULTING GEOLOGIST

312-084-9700 * WICHITA, KS

GEOLOGIST'S REPORT

DRILLING TIME AND SAMPLE LOG

COMPANY <u>RAYMOND OIL COMPANY, INC.</u>	ELEVATIONS
LEASE <u># 1 Dowd</u>	KB <u>2690</u>
FIELD <u>ALAMOTA</u>	DF _____
LOCATION <u>1996' ^{FSL} 1/4 1216' FWL</u>	EL <u>2685</u>
SEC <u>15</u> TWP <u>18s</u> RGE <u>27W</u>	Measurements are from _____
COUNTY <u>LANE</u> STATE <u>KANSAS</u>	From <u>2690 KB</u>
CONTRACTOR <u>L. D. DRILLING, INC.</u>	CASING
SPUD <u>6-6-14</u> COMP <u>6-15-14</u>	SURFACE <u>8 5/8" @ 261'</u>
RTD <u>4720</u> LTD <u>4720</u>	PRODUCTION _____
MUD DR <u>3498</u> TYPE MUD <u>CHEMICAL</u>	ELECTRICAL SURVEYS
	DUAL IND., DENS.-N., Mic

SAMPLES SAVED FROM 3400 TO 4720

DRILLING TIME KEPT FROM 3400 TO 4720

SAMPLES EXAMINED FROM 3400 TO 4720

GEOLOGICAL SUPERVISION FROM 3800 TO 4720

GEOLOGIST ON WELL KIM B. SHOEMAKER

FORMATION TOPS	LOG	SAMPLES	
ANHYDRITE	2056 + 634	2058 + 682	
BLANK	2084 + 606	2088 + 602	
STOTLER	3514 - 824	3516 - 826	
HEEBNER	3938 - 1248	3933 - 1243	
LANSING	3976 - 1286	3970 - 1280	
HUSHPUCKNEY	4283 - 1593	4284 - 1594	
MARMATON	4352 - 1662	4351 - 1661	
FORT SCOTT	4504 - 1814	4502 - 1812	
CHEROKEE	4526 - 1836	4524 - 1834	
MISSISSIPPI	4604 - 1914	4618 - 1928	

REMARKS

API: 15-101-22515

6-6-14 SPUD
 6-7 @ 264'
 6-8 @ 1910'
 6-9 @ 2850'
 6-10 @ 3275'
 6-11 @ 3767'
 6-12 @ 4200'
 6-13 @ 4308'
 6-14 @ 4589'
 6-15 @ 4720'

LEGEND

	Anhydrite		Silt		Sandstone		Shale		Core bit		Immediate		Giant		Bacterite
--	-----------	--	------	--	-----------	--	-------	--	----------	--	-----------	--	-------	--	-----------

SHOE01-06

DRILLING TIME IN MINUTES
 PER FOOT

Note of Penetration Increase

5' 10' 15' 20' 25'

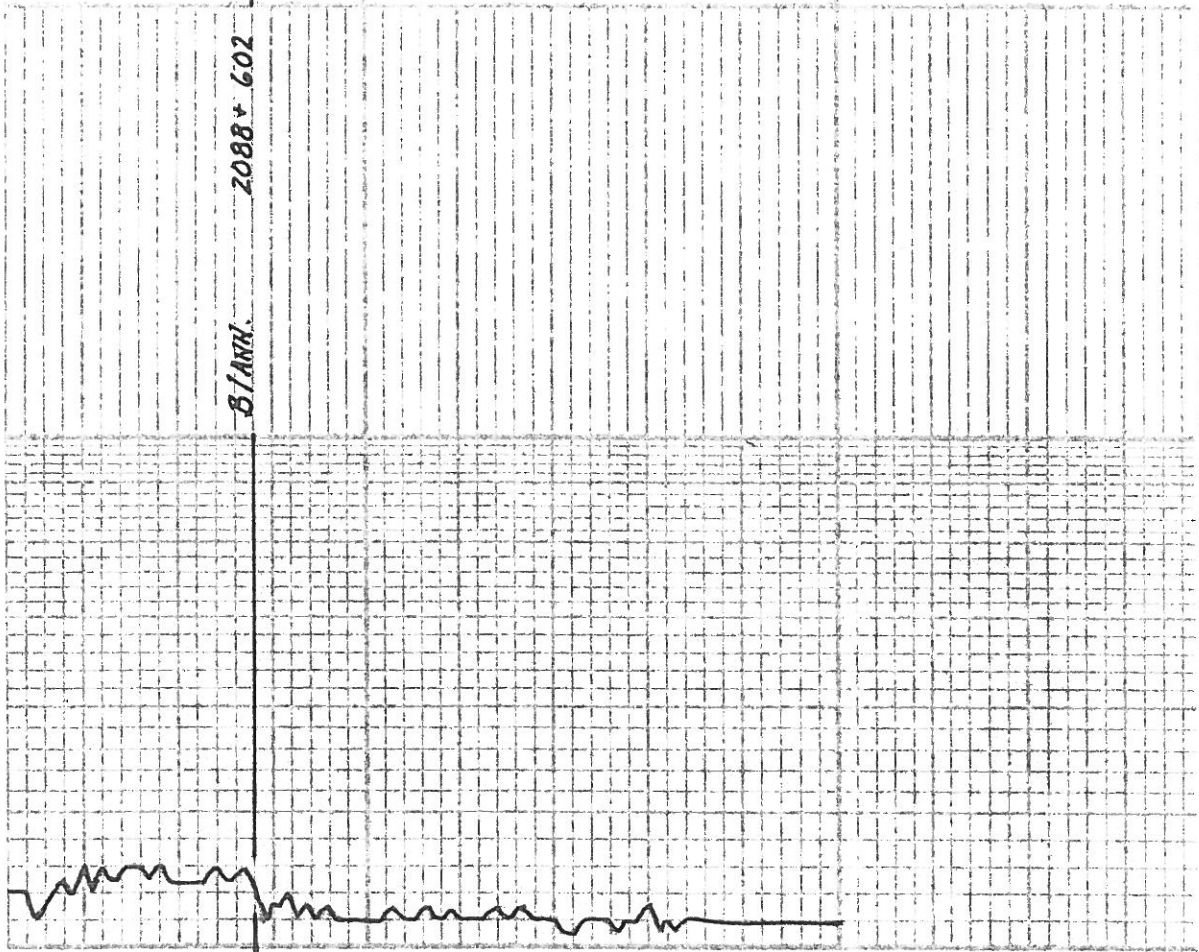
DEPTH
 2050

SAMPLE DESCRIPTIONS

REMARKS

ANHYDRITE 2058 + 632

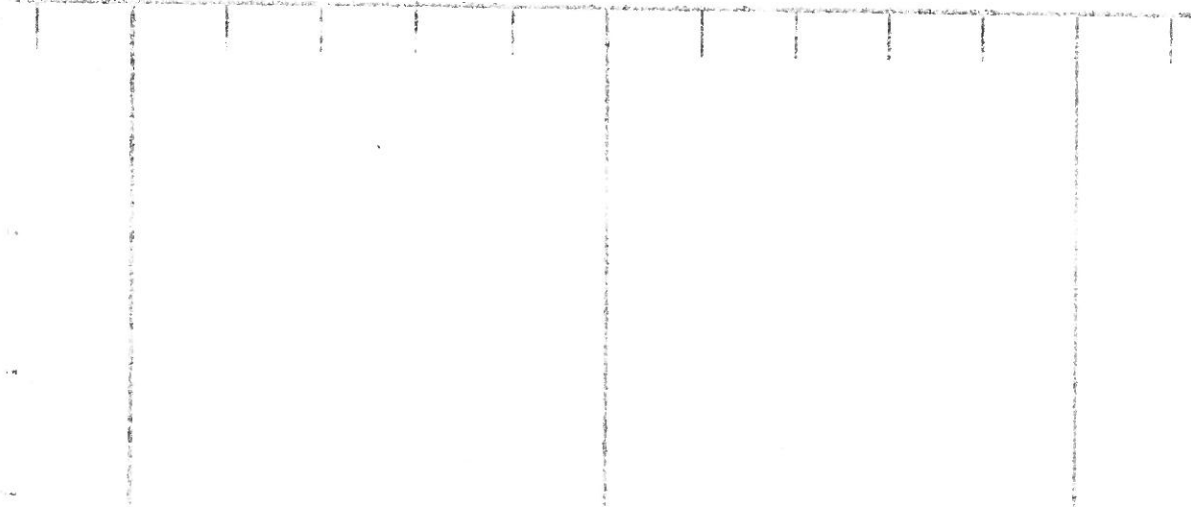
BLANK. 2088 + 602



2100

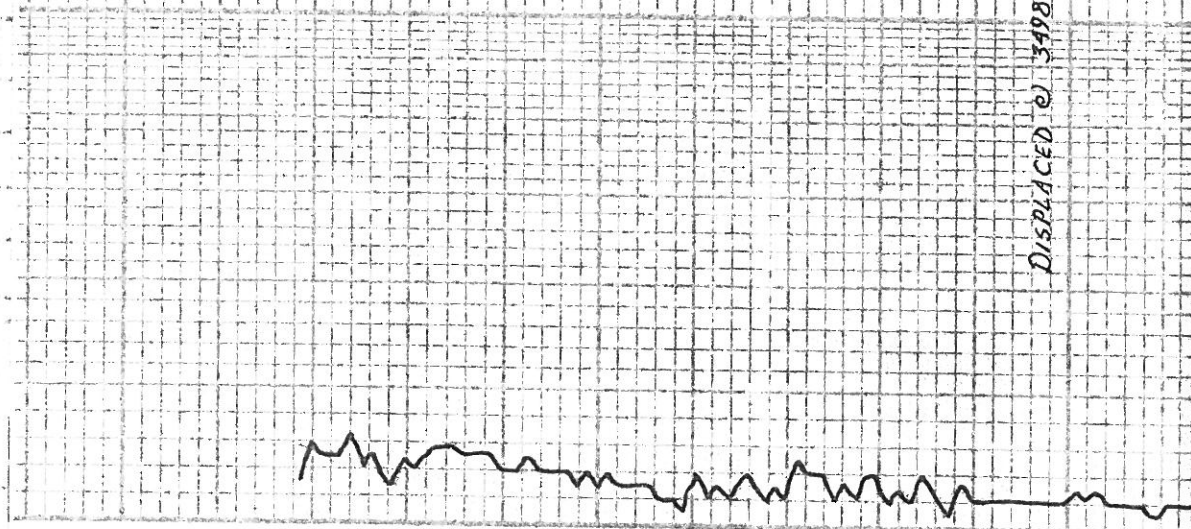
2150





Samples are logged.

Sd Gully Fr. Gr. Sub. Rd. well. Sordid



DISPLACED @ 3498

3400

3500



210746K 0010 040

45. 415y. V.Si. Foss.

41. 76 Foss.

45. wt. Foss. Calcite.

45. 76 y. Dal.

45. wt. Foss. Si. A

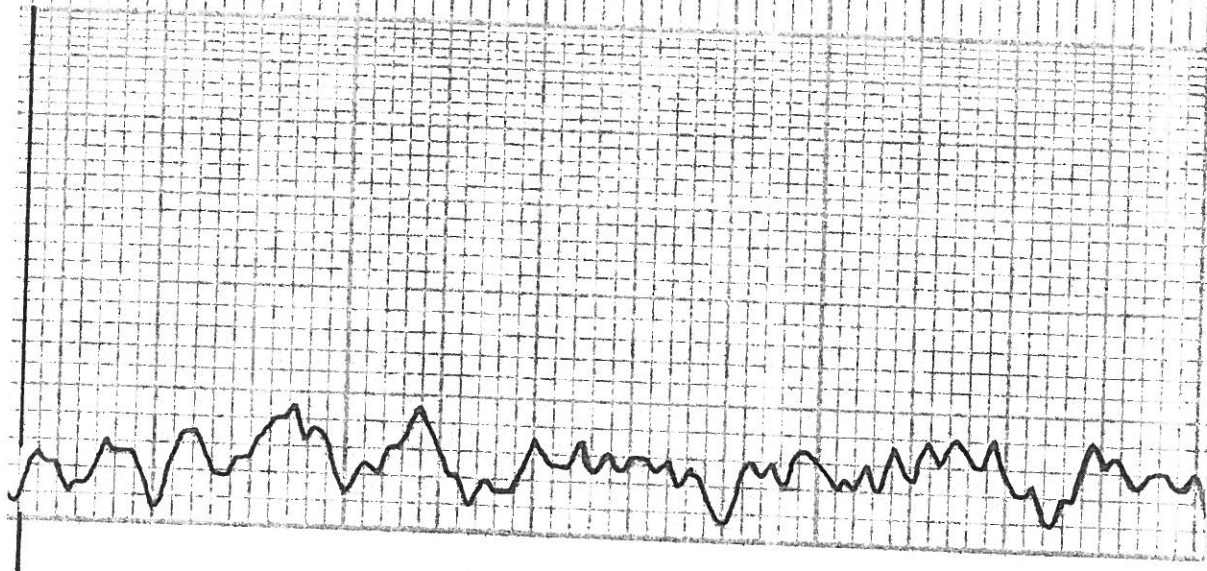
45. wt. 415y. Foss. Si. A

41. 76 y. Dal.

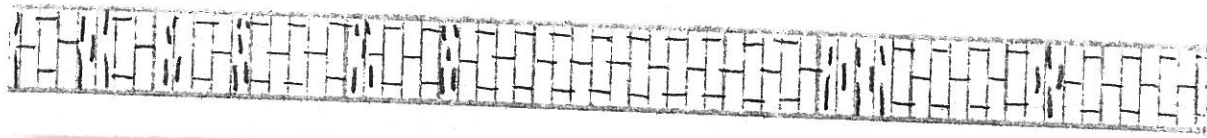
56. Gy.

45. 76 y. Si. Foss. Si. Chalk

45. 76 y. Si. Foss.



3600



65. Bu. Dior.

Sh. Flyg.

65. To wt. Sl. Foss. Sl. A

65.

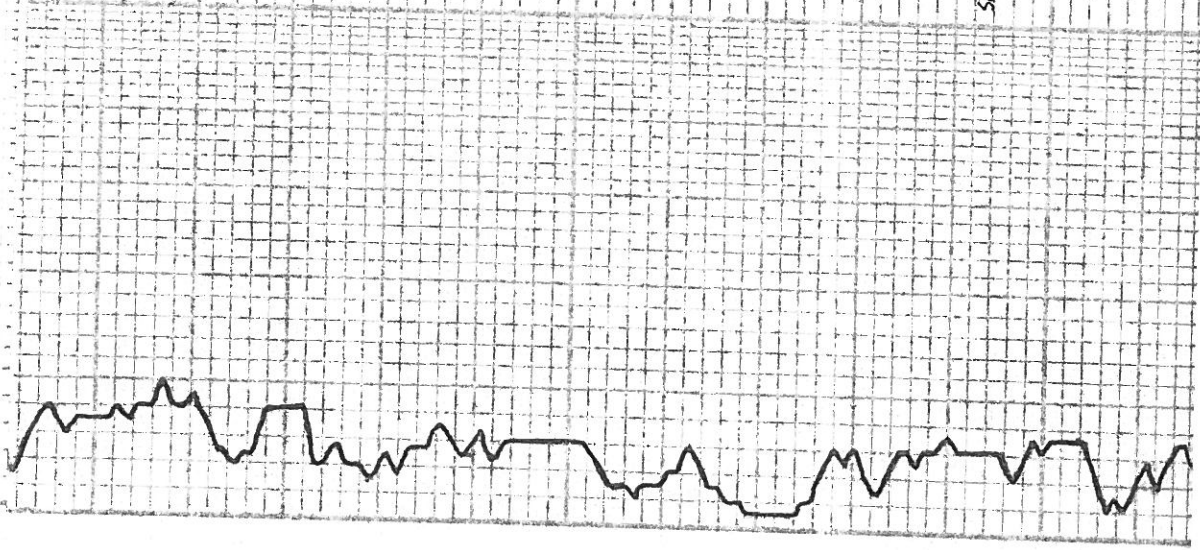
65. wt. Fly. ool. Foss.

65. To wt. ool. Foss. Calcite.

65. Fly. VSI. Chky.

Sh. Flyg.

65. To Fly. Foss.



3100



LS. To L/R Silty Foss.

LS. To L/R Foss. Calcitic

Sh. Dk. G.

Sh. Lk. Silty

Ls. G. Dm.

LS. To Mt. Foss.ool. Silty Chalk

Ls. G. Dm.

Sh. Bk.

Ls. Mt. ool.

LS. Mt. Silty ool.

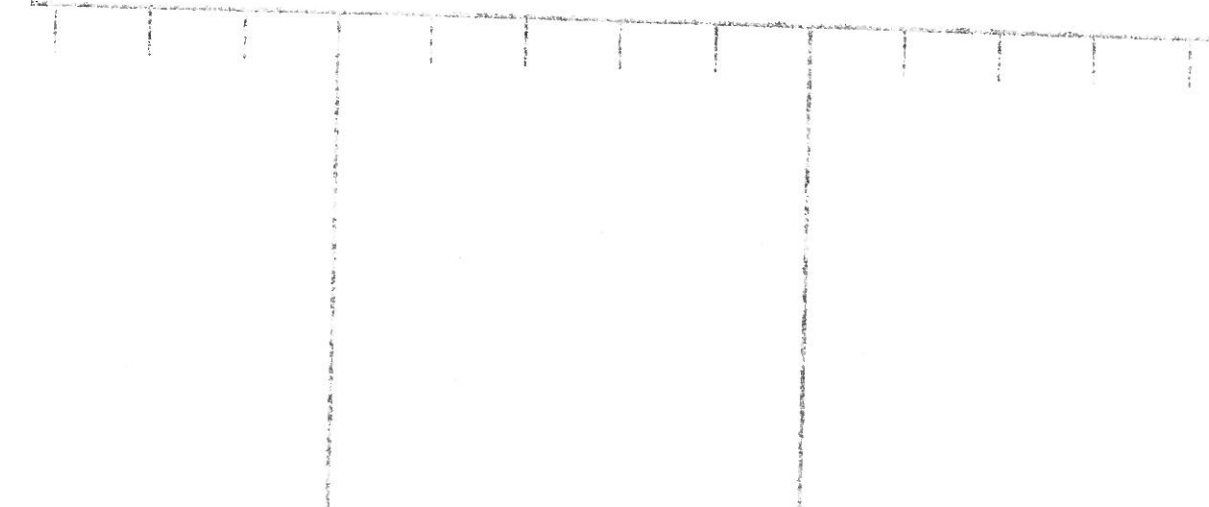
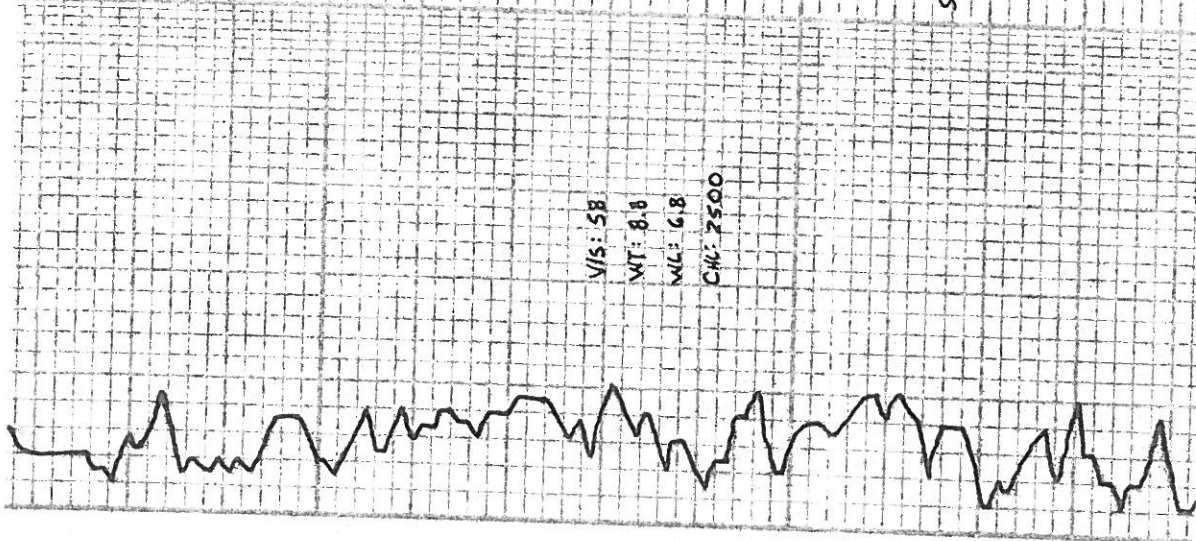
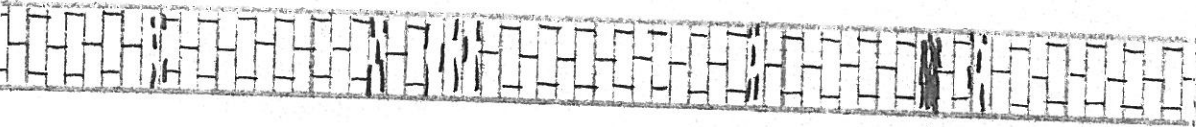
V/S: 58

WT: 8.8

W/L: 6.8

CH: 2500

3800



LS. wt. 44g ...ool. VSI. oot.

LS. wt. 43.7g

LS. Bu. Shi. Foss.

HEBNER 3933-1243
Sh. Bck. Can.

Sh. G.

LS. wt. Shool. VSI. A

LANSING 3970-1280

Sh. 44g

LS. wt. 44g ...ool. VSI. Foss.

LS. To ool. SBA

Sh. To. Dri.

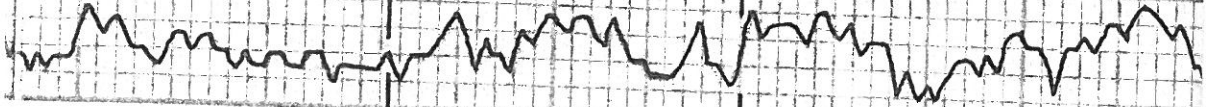
LS. Bu. VSI. Foss.

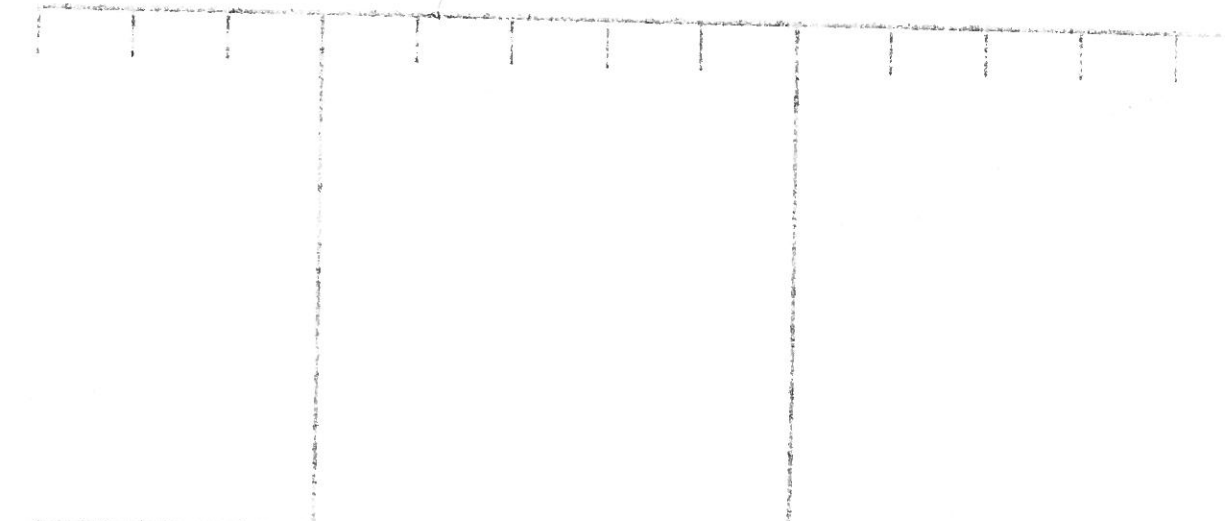
HEBNER
✓ LOG

✓ LANSING LOG

3900

4000





45. 3x Dms.

45. 4x. Sli. 401. Sli. A

45. 7x. VSI. A

45. 7x. Sli. A. VSI. Foss.

45. 7x. Sli. Foss. Sli. Chilly.

45. 7x. 000. VSI. Calcific.

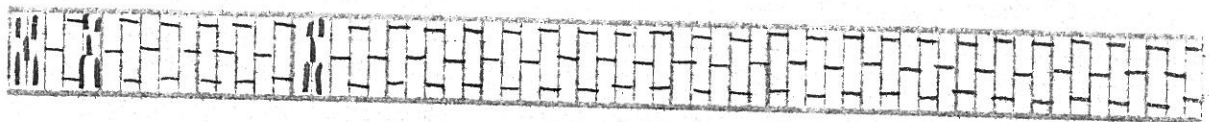
45. 000. Chilly.

45. 7x. VSI. Foss. VSI. Chilly.

45. 7x. Dms.



4100



MUNCIE CREEK 4170-1758
Sh. Blk. Carb.

LS. 41 Bl. V. St. Foss.

Sh. G. L.

A. M. Chy.

LS. M. L. Chy. V. St. Foss.

LS. T. L. Chy. D. H.

Sh. P. Chy.

LS. B. V. St. Foss.

Sh. L. Chy.

LS. M. L. St. Carb. Sh. A.

LS. T. Chy. D. H.

LS. T. L. Chy. St. Carb. Carb.

VIS. 53 WIT. 92

WD. 7.0 CHL. 2200

PIPE STRAP: 5 1308.82

6 1308.01

.81

4244-1554

STARK

Sh. Blk. Carb.

DST (1) 4280-4308

1 STOP: Blow 60' to 1'

2 STOP: " " 1/4"

30.60.45.75

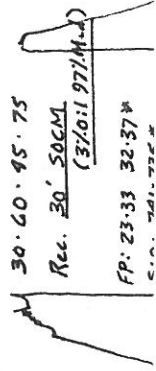
Rec. 30' SOCM

(3/0:1.97/M-2)

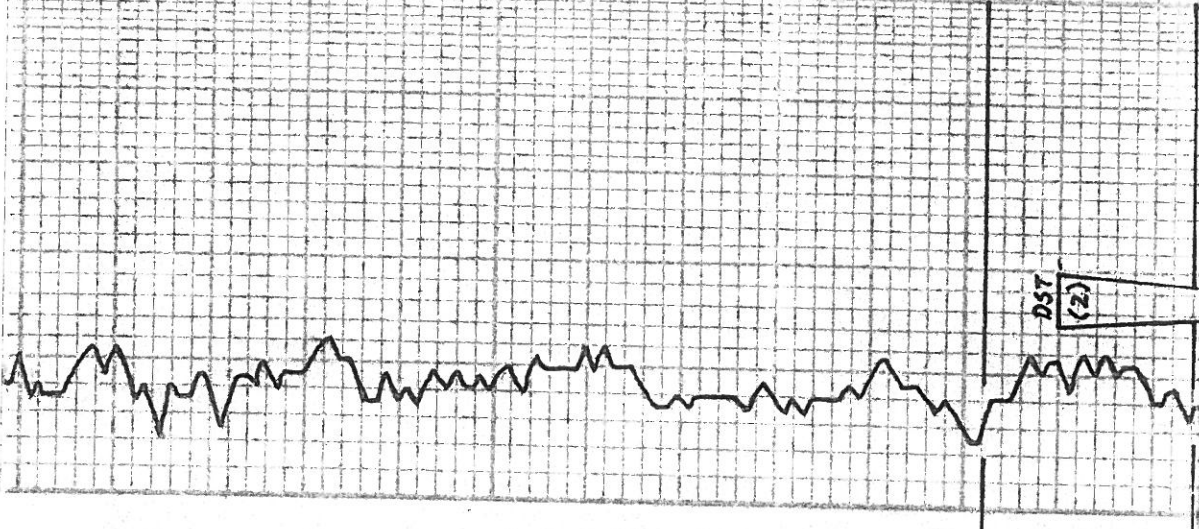
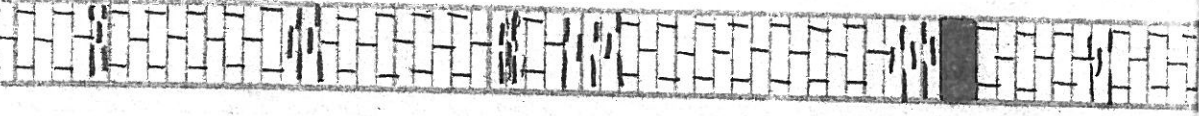
FP: 23.33 32.37*

C.A. 1911.932*

41700



4400



AL. W. Sl. Foss. Sil. A
 LS. W. Y. Ch. A
 Ph.
 LS. To. L. R. Sl. Foss. F. P. V. G.
 C. B. Sl. Ch. Sl. Foss. F. P. V. G.
 V. F. D. W.

LS. L. R. Sil. A
 Sh. G. W.

LS. To. Microsc. Sil. A

LS. B. V. Sl. Foss. Y. Sil. A
 Sh. D. G. B. L. L.
 LS. B. D. W.

Sh. G. W.
 LS. L. G. D. W.

LS. L. G. Sil. A

Sh. D. G. W.
 Sh. B. L. G. W.

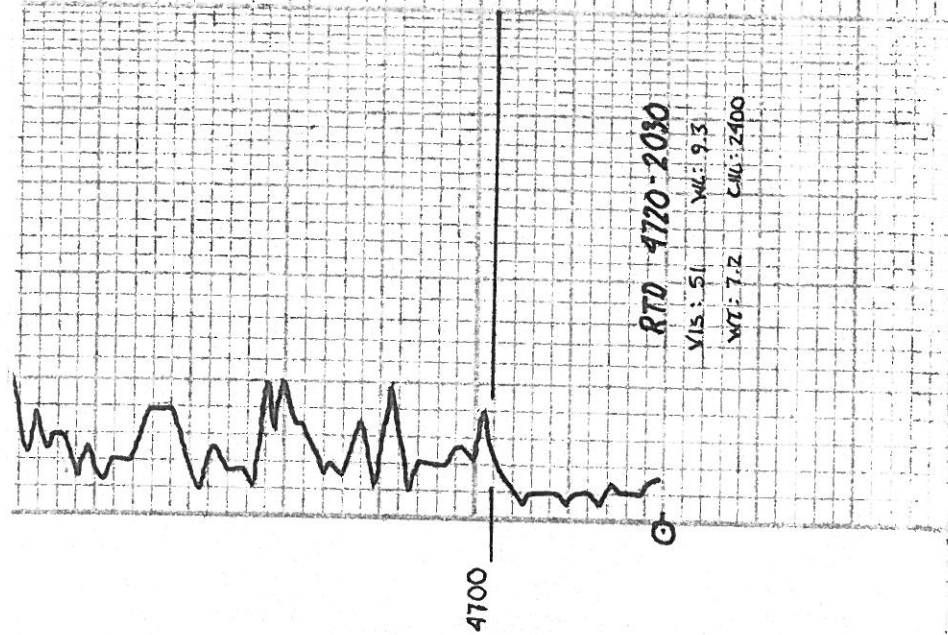
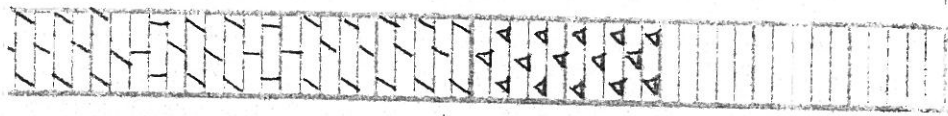
FORT SCOT 4502-1812
 LS. L. R. Sl. Foss. Sil. A
 To. LS. B. W. Sl. Foss. Sil. A

LS. W. L. R. Sl. Foss. Sil. A
 Ph. Sl. Ch. Sl. Foss. Sil. A
 V. F. D. W.

CHEROKEE 4524-1834

4500

D57
(2)



RTD 4720-2030

VIS: 51 Wt: 9.3
WT: 7.2 C10: 2400

Dob. To. 2/4. Faxln. w/ Deb. Incl.

15. w/ chly.

Dob. To. 4. V Faxln. Suc. w/ Glauv.

12. 4. Foss. SWA. Colerific.

Dob. Wh. 4/4. Faxln. St. Glauv. w/ Deb. Incl.

Dob. Gy. V Glauv. w/ Deb. Incl.

OSAGE 4702-2012

4 w/ 4/4. St. Foss. Fresh Cut.